

TC BROS.®

Pro Series MX Passenger Mini Floorboards

2018-newer Harley Softail® & Pan America®

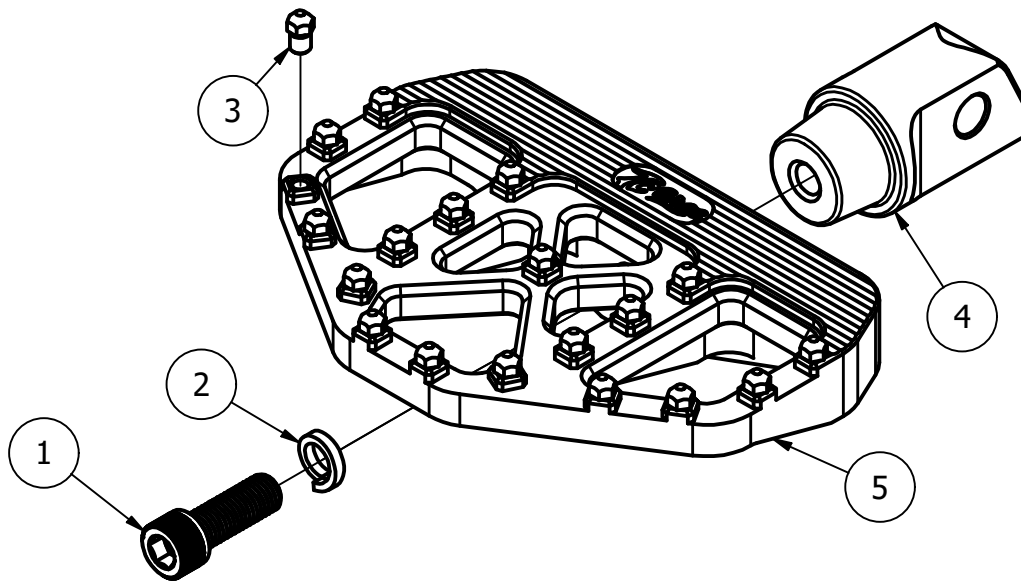
102-0137 - RAW

102-0138 - BLACK

102-0139 - GOLD

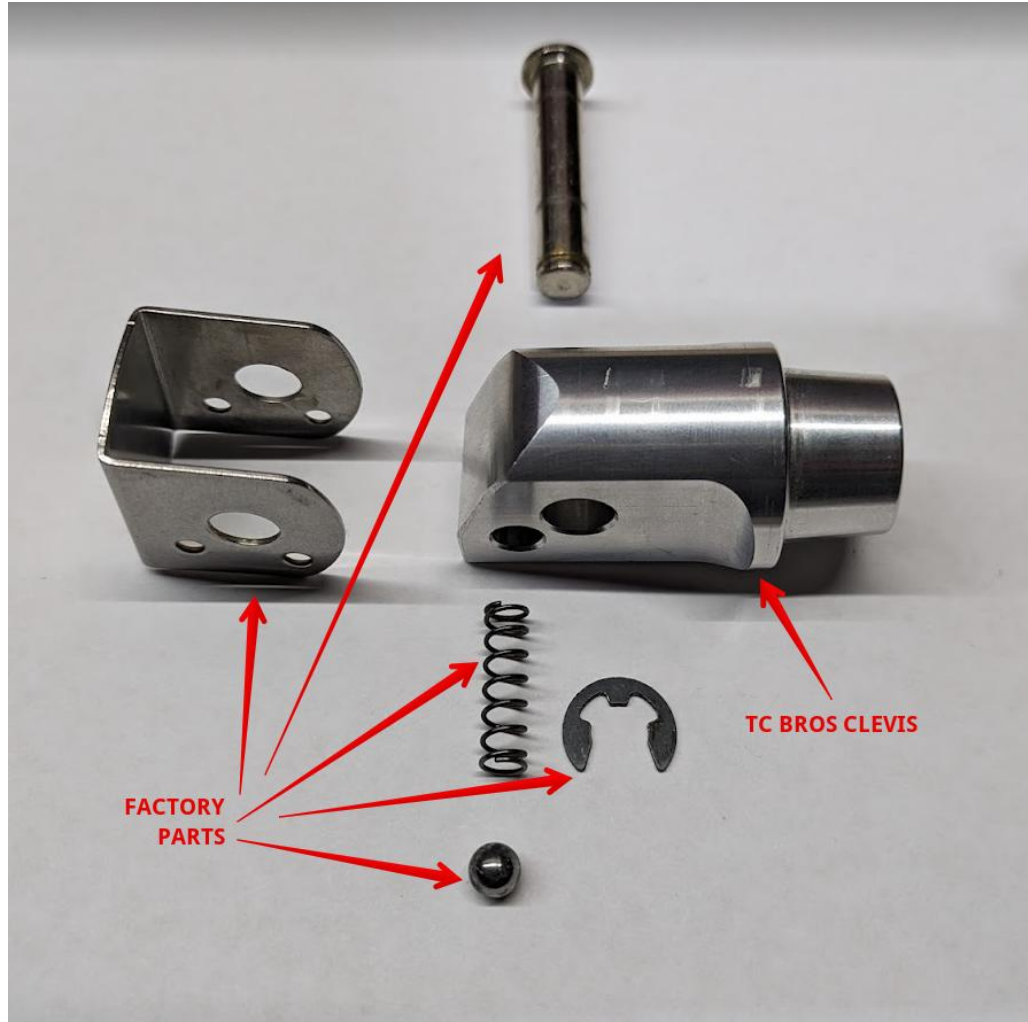
PARTS LIST (EACH FOOT PEG)

ITEM	QTY	102-0137 PART NUMBER	102-0138 PART NUMBER	102-0139 PART NUMBER	DESCRIPTION	TORQUE VALUE
1	1	119-0469	119-0469	119-0469	5/16-24 x 7/8" LG SOCKET HEAD CAP SCREW	19 FT-LB (26 N-m)
2	1	119-0483	119-0483	119-0483	5/16 ZINC PLATED SPLIT LOCK WASHER FOR SHCS	
3	19	FP118UN	FP118UN	FP118UN	CLEAT	19 IN-LB (2.1 N-m)
4	1	FP123UN	FP123UN	FP123UN	M8 ST PASSENGER CLEVIS	
5	1	FP124UN	FP124UN-BK	FP124UN-GD	MX MINI BOARD	



WARNING: APPLY MEDIUM STRENGTH
THREADLOCKER (BLUE LOCTITE™ #243)
TO ALL FASTENERS DURING FINAL ASSEMBLY.

TC BROS.
www.tcbros.com
419-265-9399



Factory hardware identified in picture. All factory pivot hardware will be reused.

Disassembly of factory foot peg:

- Remove E-clip. Cover pivot area with shop cloth and pull pin.
- Remove assembly, be sure to keep assembly covered when removing so ball and spring is not lost when inner spring retainer is removed.

Reassemble with TC Bros clevis:

- Thread all cleats into mini floorboard.
- Insert spring and ball in clevis, then slide inner spring retainer cover over clevis to contain ball and spring.
- Slide assembly into factory clevis mount.
- Insert pin and attach e-clip.
- Attach mini floorboard to clevis, position and tighten screw to proper torque.

TC BROS.
www.tcbros.com
419-265-9399