

TC BROS.®

Pro Series MX Rider Foot Pegs for 2018-newer Harley Softail® & Pan America®

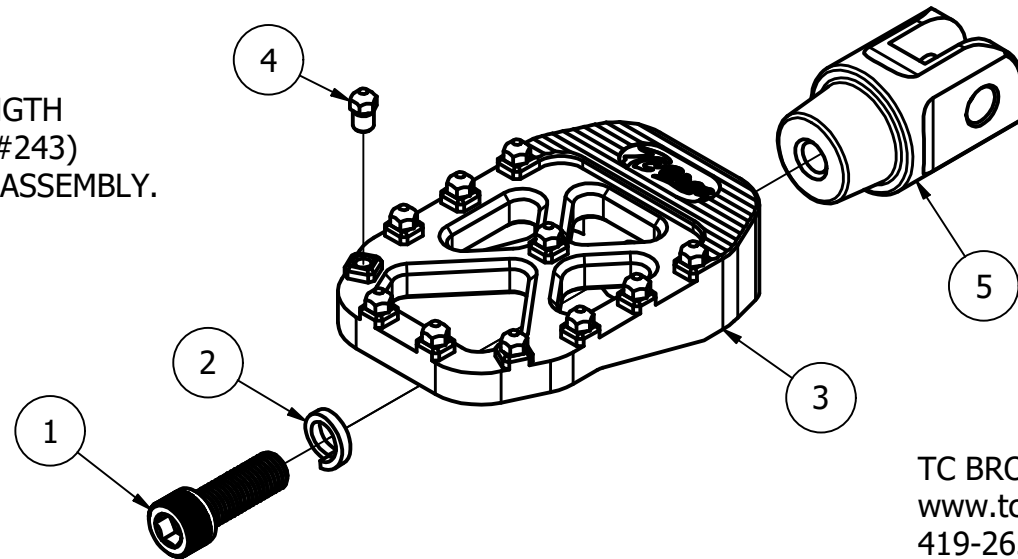
**#102-0114 - RAW**

**#102-0115 - BLACK**

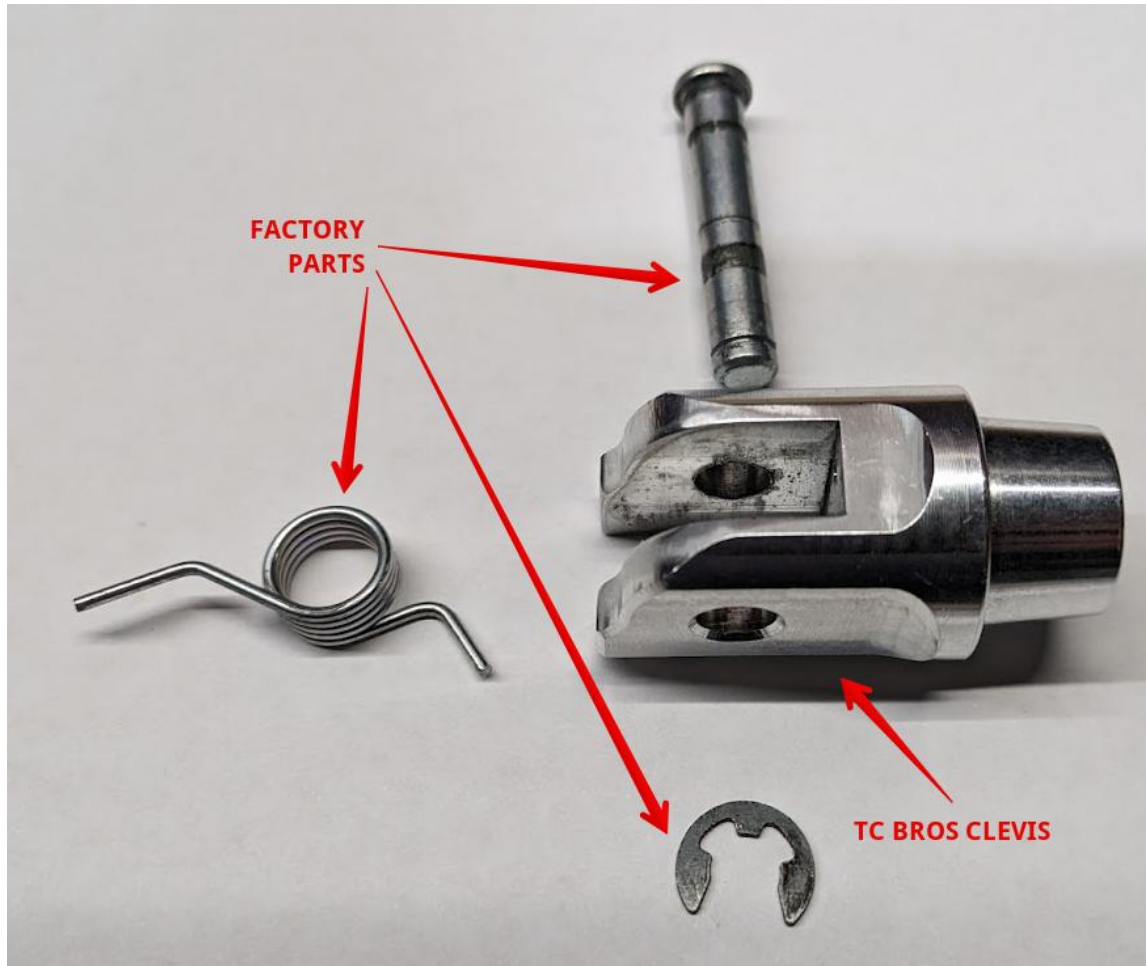
**#102-0116 - GOLD**

PARTS LIST (EACH FOOT PEG)						
ITEM	QTY	102-0114 PART NUMBER	102-0115 PART NUMBER	102-0116 PART NUMBER	DESCRIPTION	TORQUE VALUE
1	1	119-0469	119-0469	119-0469	5/16-24 x 7/8" LG SOCKET HEAD CAP SCREW	19 FT-LB (26 N-m)
2	1	119-0483	119-0483	119-0483	5/16 ZINC PLATED SPLIT LOCK WASHER FOR SHCS	
3	1	FP117UN	FP117UN-BK	FP117UN-GD	MX PEG	
4	11	FP118UN	FP118UN	FP118UN	CLEAT	19 IN-LB (2.1 N-m)
5	1	FP120UN	FP120UN	FP120UN	M8 ST RIDER CLEVIS	

**WARNING:** APPLY MEDIUM STRENGTH  
THREADLOCKER (BLUE LOCTITE™ #243)  
TO ALL FASTENERS DURING FINAL ASSEMBLY.



TC BROS.  
www.tcbros.com  
419-265-9399



Factory hardware identified in picture. All factory pivot hardware will be reused.

#### Disassembly of factory foot peg:

- Remove E-clip. Cover pivot area with shop cloth and pull pin.
- Remove footpeg, be sure to keep assembly covered so spring is not lost during removal.

#### Reassemble with TC Bros clevis:

- Thread all cleats into foot peg.
- Insert short leg of spring into TC Bros clevis.
- With spring inserted into clevis, insert long leg of spring into factory clevis mount.
- Align pivot holes and insert pin. Attach e-clip.
- Attach foot peg to clevis, position and tighten screw to proper torque.

TC BROS.  
www.tcbros.com  
419-265-9399