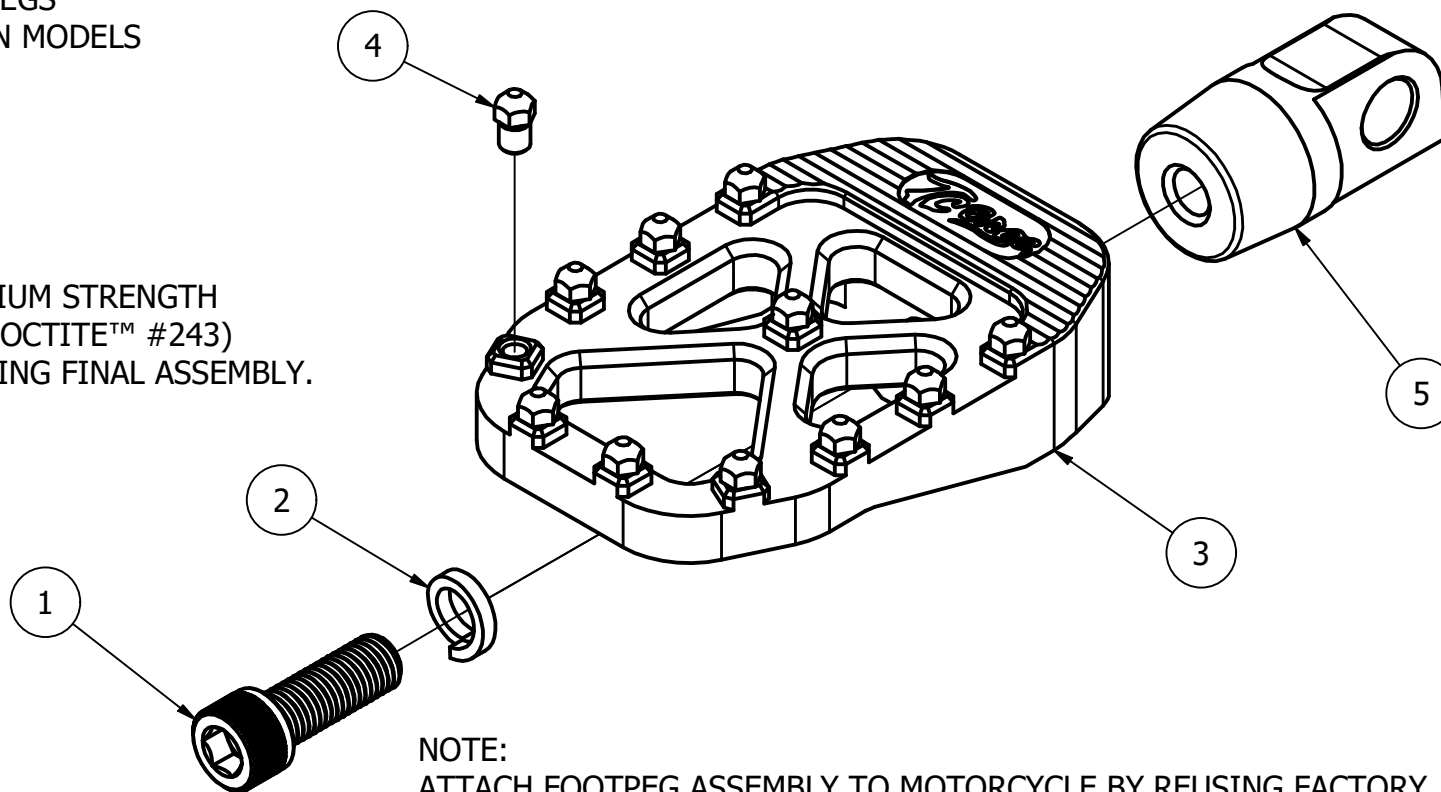


PARTS LIST (EACH FOOTPEG)				
ITEM	QTY	PART NUMBER	DESCRIPTION	TORQUE VALUE
1	1	119-0469	5/16-24 x 7/8" LG SOCKET HEAD CAP SCREW	19 FT-LB (26 N-m)
2	1	119-0483	5/16 ZINC PLATED SPLIT LOCK WASHER FOR SHCS	
3	1	FP117UN	MX PEG (RAW), -BK (BLACK), -GD (GOLD)	
4	11	FP118UN	CLEAT	19 IN-LB (2.1 N-m)
5	1	FP119UN	MALE HD CLEVIS	

TC BROS.® PART#
102-0105 - RAW
102-0106 - BLACK
102-0107 - GOLD

PRO SERIES MX FOOTPEGS
FOR HARLEY DAVIDSON MODELS

WARNING: APPLY MEDIUM STRENGTH
THREADLOCKER (BLUE LOCTITE™ #243)
TO ALL FASTENERS DURING FINAL ASSEMBLY.



TC BROS.
www.tcbros.com
419-265-9399

DOCUMENT VER 1SEPT2023

NOTE:
ATTACH FOOTPEG ASSEMBLY TO MOTORCYCLE BY REUSING FACTORY
HARDWARE (BOLTS, NUTS, PINS, CLIPS, SPRINGS, ETC.). TORQUE TO
FACTORY SPECIFICATIONS WHERE APPLICABLE. CONSULT SERVICE MANUAL
AND/OR PROFESSIONAL MOTORCYCLE TECHNICIAN IF NECESSARY.