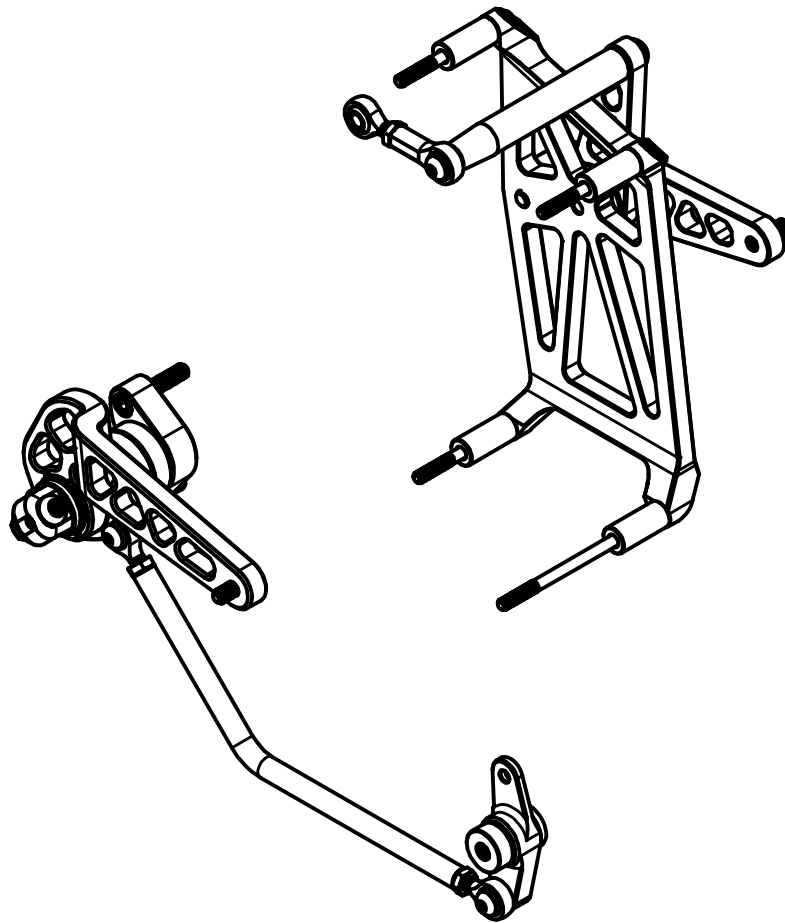


TC BROS
MID CONTROLS
FOR 2018-NEWER SOFTAIL MODELS
PART #102-0093 (RAW), 102-0094 (BLACK), 102-0095 (GOLD)



WILL NOT FIT FACTORY EXHAUST.
SEE WEBSITE FOR CURRENT LIST OF COMPATIBLE EXHAUST.

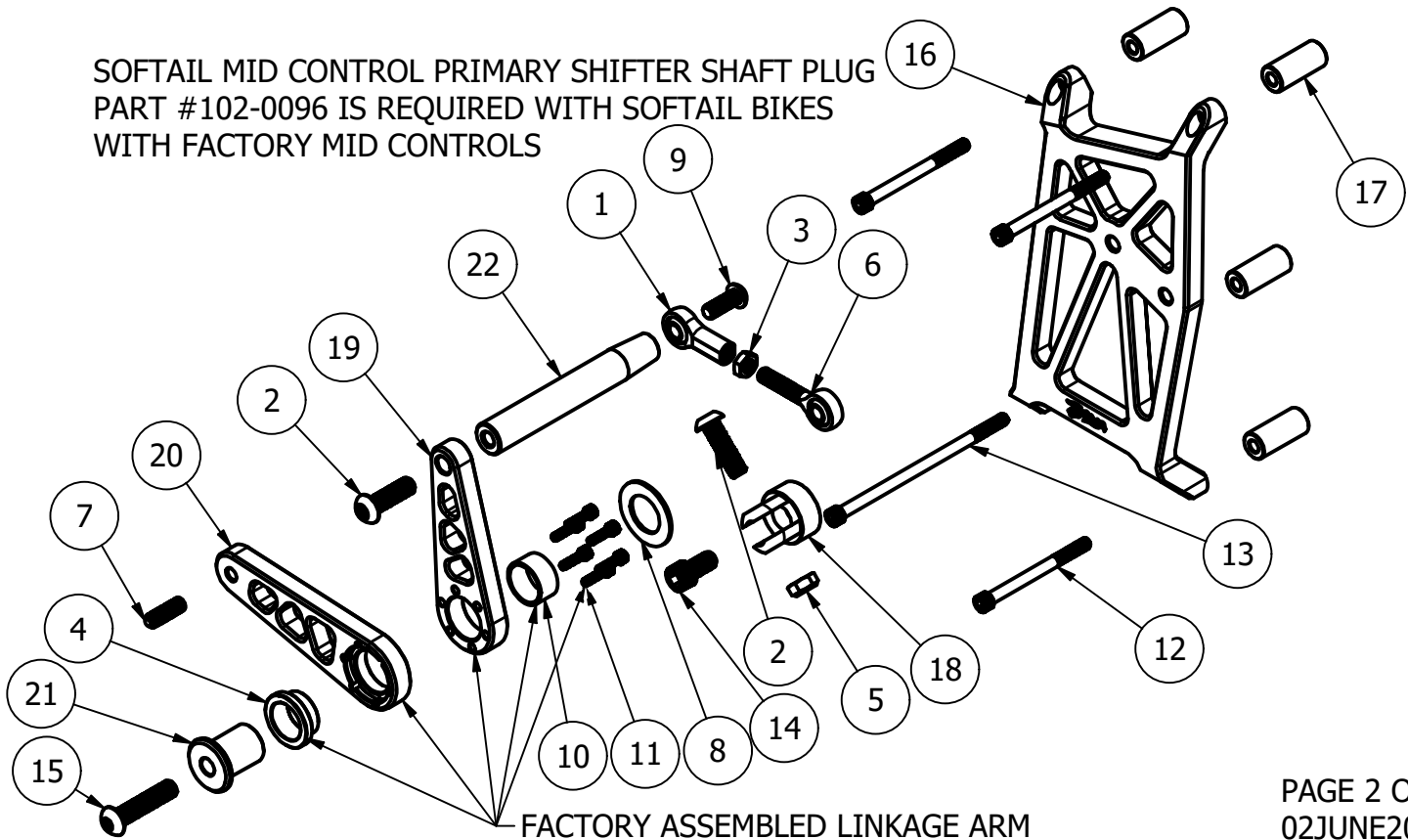
WARNING: APPLY MEDIUM STRENGTH THREADLOCKER (BLUE LOCTITE® 243 OR EQUIVALENT) TO ALL THREADED FASTENERS. BE SURE TO THOROUGHLY CLEAN THREADS OF ALL DIRT OR GREASE TO PERMIT PROPER ADHESION. ALLOW THREADLOCKER TO FULLY CURE ACCORDING TO MANUFACTURERS SPECIFICATIONS BEFORE RIDING. FAILURE TO FOLLOW THESE INSTRUCTIONS MAY RESULT IN SERIOUS INJURY OR DEATH.

TC BROS.
www.tcbros.com
419-265-9399

102-0093 (RAW), 102-0094 (BLACK), 102-0095 (GOLD) PARTS LIST - LEFT SIDE

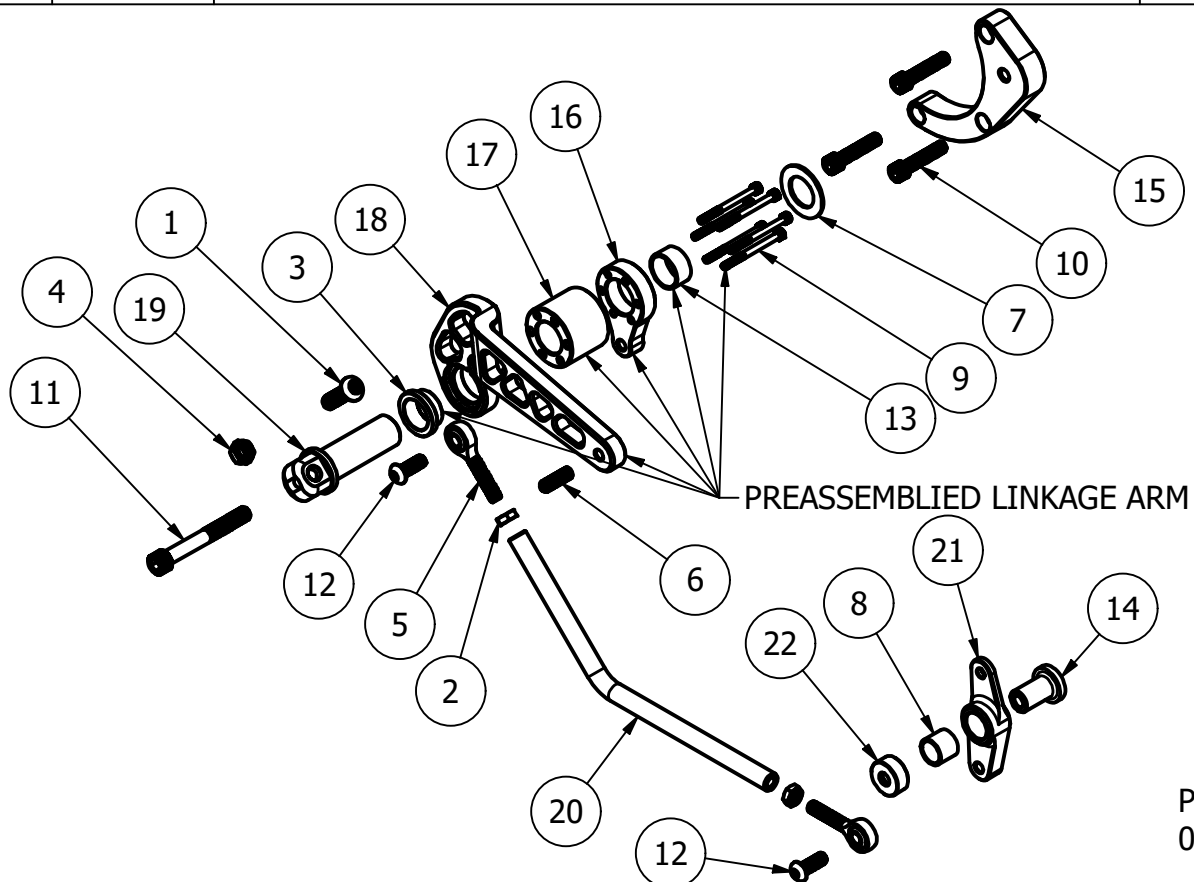
ITEM	QTY	PART NUMBER	DESCRIPTION	TORQUE VALUE
1	1	119-0009	5/16-24 FEMALE HEIM JOINT	
2	2	119-0040	3/8-16x1-1/4 SS BUTTON HEAD BOLT	20 FT-LB (27 Nm)
3	1	119-0103	5/16-24 SS JAM NUT	
4	1	119-0153	7/8"IDx1"ODx1/2"LG BRONZE FLANGE BUSHING	
5	1	119-0155	3/8-16 THIN HEX LOCKNUT SS	
6	1	119-0203	5/16-24 MALE HEIM JOINT STEEL ZINC PLT	
7	1	119-0302	5/16"-24 x 1" SET SCREW	
8	1	119-0438	7/8 IDx1-1/2 ODx1/16 TH BRONZE THRUST WASHER	
9	1	119-0443	5/16X24 X 7/8 SS BUTTON HEAD HEX DRIVE SCREW	12 FT-LB (16 Nm)
10	1	119-0444	7/8 IDx1 ODx1/2 LG BRONZE BUSHING	
11	6	119-0445	8-32x5/8 SS SOCKET HEAD CAP SCREW	23 IN-LB (2.6 Nm)
12	3	119-0446	1/4-20 X 3 SS SOCKET HEAD CAP SCREW	9 FT-LB (12 Nm)
13	1	119-0447	1/4-20 X 5 SS SOCKET HEAD CAP SCREW	9 FT-LB (12 Nm)
14	1	119-0448	3/8-16 X 3/4 SS SOCKET HEAD CAP SCREW	20 FT-LB (27 Nm)
15	1	119-0449	3/8-16 X 1-3/4LG SS BUTTON HEAD HEX DRIVE SCREW	20 FT-LB (27 Nm)
16	1	MC178M8	MID CONTROL MOUNT LEFT (RAW), -BK (BLACK), -GD (GOLD)	
17	4	MC179M8	SPACER	
18	1	MC180M8	MC CLEVIS	
19	1	MC181M8	SHIFTER LINKAGE ARM (RAW), -BK (BLACK), -GD (GOLD)	
20	1	MC182M8	SHIFTER PEG ARM (RAW), -BK (BLACK), -GD (GOLD)	
21	1	MC183M8	PIVOT BOSS LEFT	
22	1	MC184M8	LINKAGE ARM SPACER (RAW), -BK (BLACK), -GD (GOLD)	

SOFTAIL MID CONTROL PRIMARY SHIFTER SHAFT PLUG
PART #102-0096 IS REQUIRED WITH SOFTAIL BIKES
WITH FACTORY MID CONTROLS



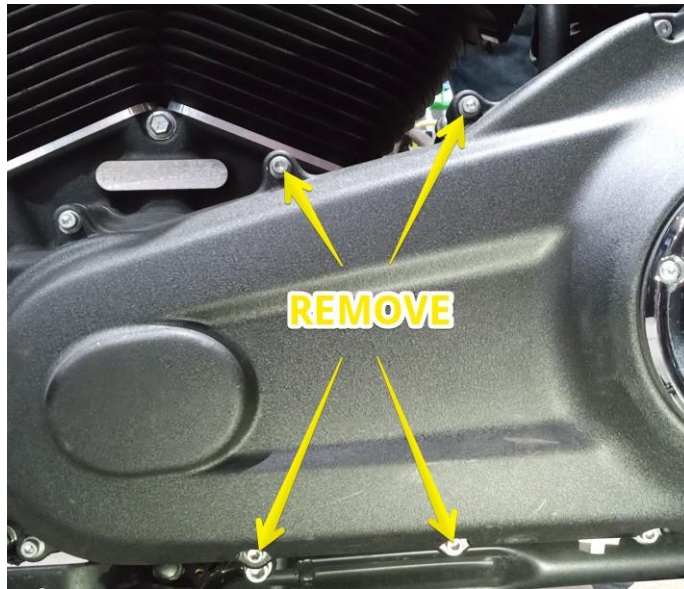
102-0093 (RAW), 102-0094 (BLACK), 102-0095 (GOLD) PARTS LIST - RIGHT SIDE

ITEM	QTY	PART NUMBER	DESCRIPTION	TORQUE VALUE
1	1	119-0040	3/8-16x1-1/4 SS BUTTON HEAD BOLT	
2	2	119-0103	5/16-24 SS JAM NUT	
3	1	119-0153	7/8"IDx1"ODx1/2"LG BRONZE FLANGE BUSHING	
4	1	119-0155	3/8-16 THIN HEX LOCKNUT SS	
5	2	119-0203	5/16-24 MALE HEIM JOINT STEEL ZINC PLT	
6	1	119-0302	5/16"-24 x 1" SET SCREW	
7	1	119-0438	7/8 IDx1-1/2 ODx1/16 TH BRONZE THRUST WASHER	
8	1	119-0439	5/8"IDx3/4"ODx5/8"LG BRONZE FLANGE BUSHING	
9	6	119-0440	8-32x2 SS SOCKET HEAD CAP SCREW	23 IN-LB (2.6 Nm)
10	3	119-0441	3/8-16x1-1/2" LG SS SOCKET HEAD CAP SCREW	17 FT-LB (23 Nm)
11	1	119-0442	3/8-16x3"LG SS SOCKET HEAD CAP SCREW	20 FT-LB (27 Nm)
12	2	119-0443	5/16X24 X 7/8 SS BUTTON HEAD HEX DRIVE SCREW	12 FT-LB (16 Nm)
13	1	119-0444	7/8 IDx1 ODx1/2 LG BRONZE BUSHING	
14	1	HD 50600206	OEM #50600206 BRAKE MOUNTING BRACKET, (NOT INCLUDED)	
15	1	MC185M8	MID CONTROL MOUNT RIGHT (RAW), -BK (BLACK), -GD (GOLD)	
16	1	MC186M8	BRAKE LINKAGE ARM (RAW), -BK (BLACK), -GD (GOLD)	
17	1	MC187M8	BRAKE PIVOT SPACER (RAW), -BK (BLACK), -GD (GOLD)	
18	1	MC188M8	BRAKE PEG ARM (RAW), -BK (BLACK), -GD (GOLD)	
19	1	MC189M8	MC PIVOT CLEVIS	
20	1	MC190M8	BRAKE LINKAGE ROD	
21	1	MC191M8	MASTER CYLINDER LINKAGE	
22	1	MC192M8	SPACER	



SHIFT SIDE INSTALLATION INSTRUCTIONS

1. REMOVE FOOT CONTROL COMPONENTS: PEGS, FLOORBOARDS, LEVERS AND LINKAGE.
2. SOFTTAIL MODELS WITH STOCK MID CONTROLS THAT HAVE SHIFT SHAFT THROUGH PRIMARY WILL REQUIRE PLUG KIT 102-0096 (NOT INCLUDED) BEFORE INSTALLING TC BROS MID CONTROL MOUNT.
3. REMOVE 4 CAP SCREWS NOTED.



4. INSTALL MID CONTROL MOUNT LEFT (MC178M8) USING PROVIDED SPACERS (MC179M8) AND SCREWS (119-0446 & 119-0447). NOTE BOTTOM LEFT SCREW LOCATION REQUIRES LONGER SCREW. APPLY BLUE THREAD LOCKER AND TORQUE.
5. INSTALL MC CLEVIS (MC180M8) SEE BELOW FOR SUGGESTED ROTATION POSITION. APPLY BLUE THREAD LOCKER AND TORQUE.



6. INSTALL PREASSEMBLED LINKAGE ARM WITH PIVOT BOSS LEFT (MC183M8). PLACE BRONZE THRUST WASHER (119-0438) BEHIND LINKAGE ASSEMBLY. BE SURE POSITION OF THRUST WASHER IS ON BOSS, NOT PINCHED BETWEEN BOSS AND MOUNT. APPLY BLUE THREAD LOCKER AND TORQUE

7. INSTALL FOOT AND TOE PEG. (NOT INCLUDED)

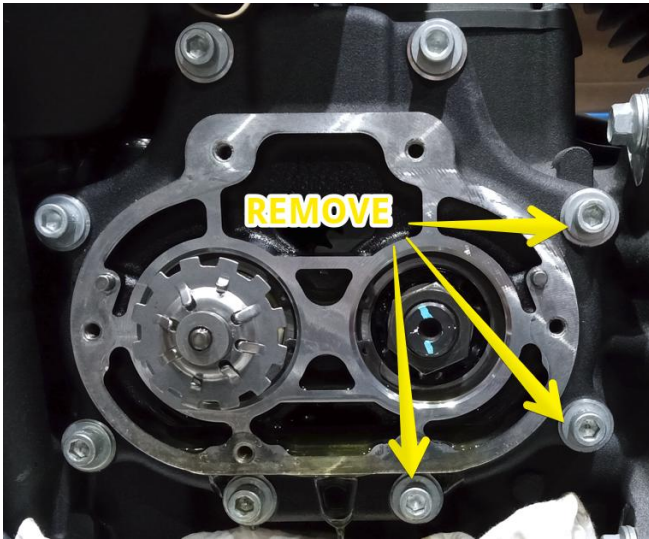
8. INSTALL LINKAGE ARM SPACER AND HEIM JOINTS WITH LOCK NUT. ADJUST HEIM JOINTS TO CHANGE TOE PEG POSITION. TIGHTEN LOCKNUT ON HEIM JOINTS. APPLY BLUE THREAD LOCKER AND TORQUE

BRAKE SIDE INSTALLATION INSTRUCTIONS

1. REMOVE EXHAUST AND FOOT CONTROL COMPONENTS: PEGS, FLOORBOARDS, LEVERS AND LINKAGE.

2. REMOVE CLUTCH RELEASE COVER. NOTE POSITION OF BOLT LENGTH WHEN REMOVING. IF HYDRAULIC CLUTCH POSITION CATCH PAN TO COLLECT OIL.

3. REMOVE 3 CAP SCREWS SHOWN BELOW.



4. INSTALL MID CONTROL MOUNT RIGHT (MC185M8) WITH 3/8-16x1-1/2" CAP SCREW (119-0441) PROVIDED IN KIT. APPLY BLUE THREAD LOCKER AND TORQUE. 15 FT-LB

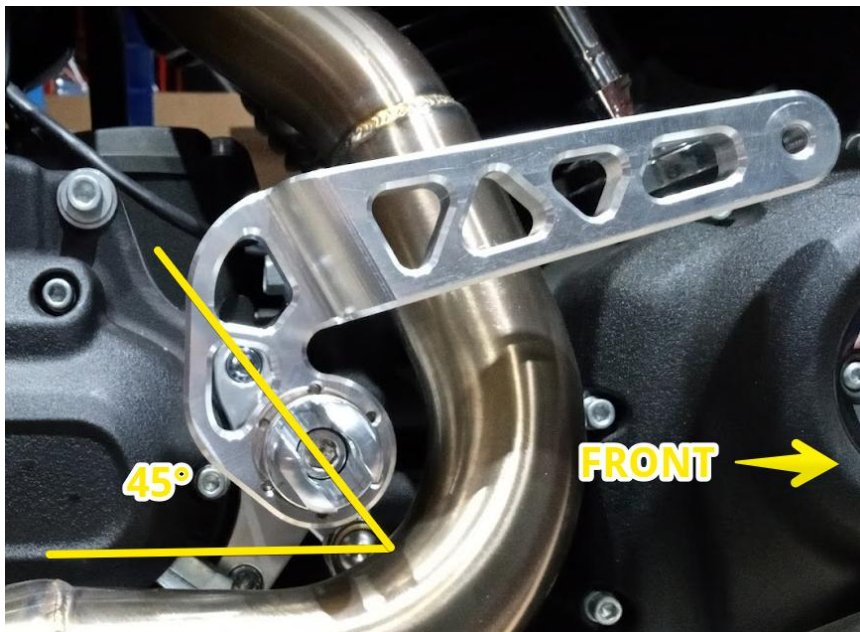
5. REINSTALL CLUTCH RELEASE COVER USING A CROSSING PATTERN. APPLY BLUE THREAD LOCKER AND TORQUE. 9 FT-LB

6. INSTALL AFTERMARKET EXHAUST.

7. INSTALL LOCK NUT (119-0103) TO CLEVIS (119-0010) TO BOTH ENDS BRAKE LINKAGE ROD (MC190M8). BOLT PRE-ASSEMBLED BRAKE LINKAGE ROD, SHORTER END OF LINKAGE ROD, TO PRE-ASSEMBLED LINKAGE ARMS. APPLY BLUE THREAD LOCKER AND TORQUE

8. INSTALL ASSEMBLY FROM PREVIOUS STEP WITH PIVOT CLEVIS (MC189M8). PLACE BRONZE THRUST WASHER (119-0438) BEHIND LINKAGE ASSEMBLY. BE SURE POSITION OF THRUST WASHER IS ON BOSS, NOT PINCHED BETWEEN BOSS AND MOUNT.

SEE BELOW FOR SUGGESTED CLEVIS ROTATION POSITION.
APPLY BLUE THREAD LOCKER AND TORQUE



9. INSTALL NEW MASTER CYLINDER LINKAGE (MC198M8) WITH EXISTING HARDWARE. USE SPACER (MC192M8) IF NECESSARY. CONNECT TO MASTER CYLINDER AND BRAKE LINKAGE ROD ASM.

10. INSTALL FOOT AND TOE PEG. (NOT INCLUDED)

11. ADJUST HEIM JOINTS TO CHANGE TOE PEG POSITION. TIGHTEN LOCKNUT ON HEIM JOINTS.
APPLY BLUE THREAD LOCKER AND TORQUE

12. IF MOTORCYCLE IS EQUIPPED WITH HYDRAULIC CLUTCH, CHECK OIL LEVEL IN TRANSMISSION.
ADD PROPER OIL IF NECESSARY.