



## Greenpost

Chicago, IL 60634  
 elad@greenpostcbd.com  
 773-628-3637

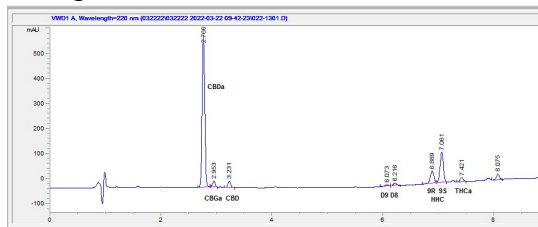
## Sample 507-032223-026

HHC Bubba Kush  
 Sample Submitted: 03-22-2023; Report Date: 03-25-2022

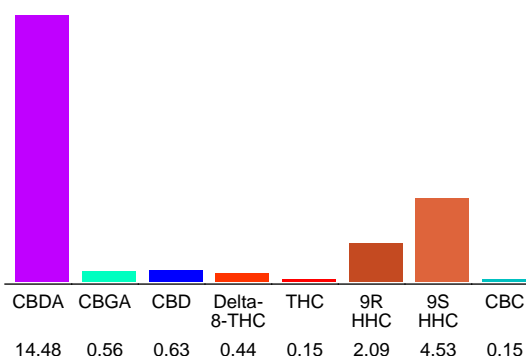
## HHC Bubba Kush

Plant Material: Flower

### Chromatogram



### Cannabinoid Profile



### Cannabinoid Profile by HPLC

**0.15%**  
 Calculated THC Yield

**13.33%**  
 Calculated CBD Yield

**23.03%**  
 Total Cannabinoids

Cannabinoid	% wt	mg/g
CBDA	14.48	144.8
CBGA	0.56	5.6
CBD	0.63	6.3
Delta-8-THC	0.44	4.4
THC	0.15	1.5
9R HHC	2.09	20.9
9S HHC	4.53	45.3
CBC	0.15	1.5
<b>Total Cannabinoids</b>	<b>23.03</b>	<b>230.3</b>
<b>Calculated THC Yield</b>	<b>0.15</b>	<b>1.50</b>
<b>Calculated CBD Yield</b>	<b>13.33</b>	<b>133.29</b>
Calculated Maximum THC Yield = THC + 0.877 * THCA		
Calculated Maximum CBD Yield = CBD + 0.877 * CBDA		

**Marin Analytics, LLC**  
 250 Bel Marin Keys Blvd, Suite D4  
 Novato, CA 94949  
 415-936-6477 / sarabiancalana1@gmail.com

*Sara Biancalana*  
**Sara Biancalana**  
 Chief Scientist

This sample has been tested by Marin Analytics, LLC using valid testing methodologies and a quality system. Values reported relate only to the sample tested. Marin Analytics, LLC makes no claims as to the efficacy, safety or other risks associated with any detected or non-detected levels of any compounds reported herein. This Certificate shall not be reproduced except in full, without the written approval of Marin Analytics, LLC.