

Best doors PD 120 Double Action Door Set -/120/60sm Installation

WALL TYPE: T I M B E R S T U D

FRAME TYPE: S T E E L

Frame materials available:

EG Z - 1.6mm

Cold rolled galvanized - 1.6mm

Stainless Steel - 1.5mm (PD 30 and PD 60 only)

Fasteners:

Folded steel connection plates (as shown) to be supplied with frames.

Hook onto frame bracing straps and nail or screw to timber studs.

Frame connection plates either clouts (30 x 2.5mm gib clouts) or screw fixed.

Head Fixing (minimum):

Single door - none required

Paired door - single central fixing required

Stud size:

Ex 100x50mm minimum

Wedging gap:

Not applicable

Insulation rating:

To obtain an insulation rating, the steel frame must be packed with either;

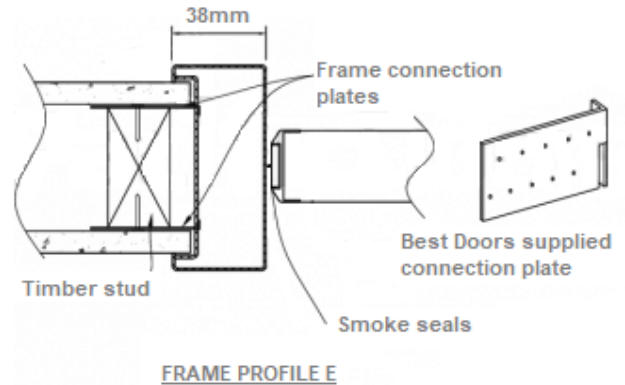
Plasterboard (30 minutes)

Cornice plaster (30 minutes)

Grout (60 minutes)

Mineral Wool (30 minutes)

No frame packing equals no insulation rating (i.e. -/xx/-)



WALL TYPE: T I M B E R S T U D

FRAME TYPE: S T E E L

Frame materials available:

EG Z - 1.6mm

Cold rolled galvanized - 1.6mm

Stainless Steel - 1.5mm (PD 30 and PD 60 only)

Fasteners:

Framing stud No.1 screwed to jamb.

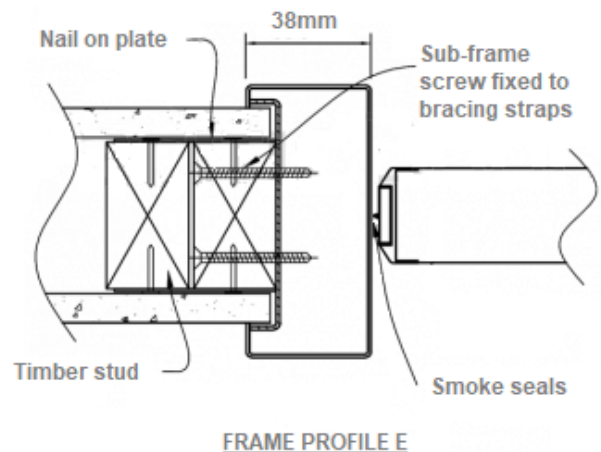
Connection to stud No.2 via rebated nail on plates. One fastener per location except at bottom where two fasteners are required.

Frame to be screw fixed (10g x 50mm self tapping) at 600mm centres nominal. Two fasteners per location where applicable.

Head Fixing (minimum):

Single door - none required

Paired door - double central fastener required



Stud size:

Ex 100x50mm minimum

Wedging gap:

Not applicable

Insulation rating:

To obtain an insulation rating, the steel frame must be packed with either;

Plasterboard (30 minutes)

Cornice plaster (30 minutes)

Grout (60 minutes)

Mineral Wool (30 minutes)

No frame packing equals no insulation rating (i.e. -/xx/-)

WALL TYPE: **TIMBER STUD**

FRAME TYPE: **STEEL**

Frame materials available:

EGZ - 1.6mm

Cold rolled galvanized - 1.6mm

Stainless Steel - 1.5mm (PD30 and PD60 only)

Fasteners:

Frame screwed to stud through Gib Fyreline packing between stud and shims.

Frame to be screw fixed (10g x 50mm self tapping) at 600mm centres nominal. Two fasteners per location where applicable.

Head Fixing (minimum):

Single door - none required

Paired door - double central fastener required

Stud size:

Ex 100x50mm minimum

Wedging gap:

0-10mm

Insulation rating:

To obtain an insulation rating, the steel frame must be packed with either;

Plasterboard (30 minutes)

Cornice plaster (30 minutes)

Grout (60 minutes)

Mineral Wool (30 minutes)

No frame packing equals no insulation rating (i.e. -/xx/-)

WALL TYPE: **TIMBER STUD**

FRAME TYPE: **STEEL**

Frame materials available:

EGZ - 1.6mm

Cold rolled galvanized - 1.6mm

Stainless Steel - 1.5mm (PD30 and PD60 only)

Fasteners:

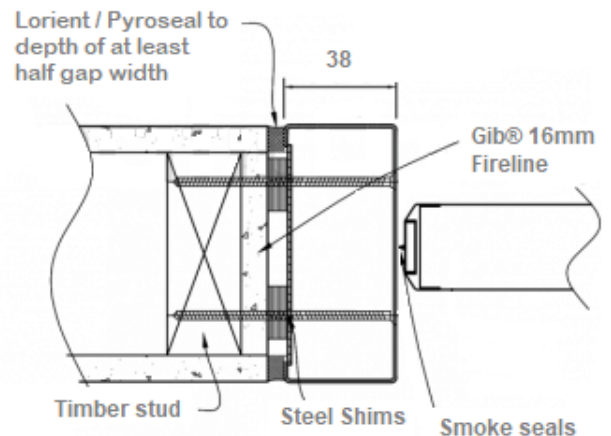
Frames may be screwed directly to studs either through the stud and into the frame bracing straps or through the frame into the timber stud at 600mm centres nominal.

Frame to be screw fixed (10g x 50mm self tapping) at 600mm centres nominal. Two fasteners per location where applicable.

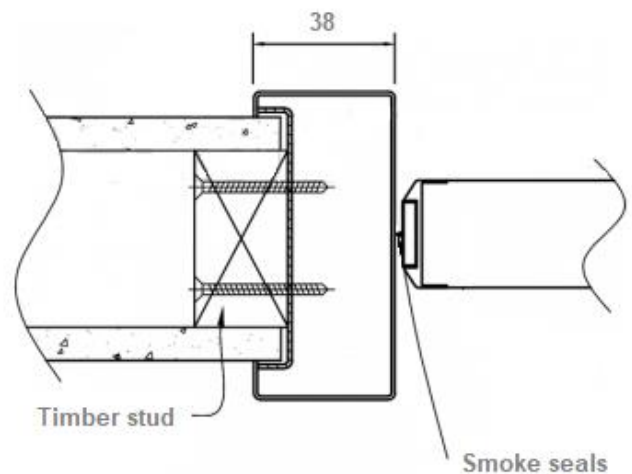
Head Fixing (minimum):

Single door - none required

Paired door - double central fastener required



FRAME PROFILE E



FRAME PROFILE E

Stud size:

Ex 100x50mm minimum

Wedging gap:

Not applicable

Insulation rating:

To obtain an insulation rating, the steel frame must be packed with either;

Plasterboard (30 minutes)

Cornice plaster (30 minutes)

Grout (60 minutes)

Mineral Wool (30 minutes)

No frame packing equals no insulation rating (i.e. -/xx/-)

WALL TYPE: MASONRY

FRAME TYPE: STEEL

Frame materials available:

EGZ - 1.6mm

Cold rolled galvanized - 1.6mm

Stainless Steel - 1.5mm (PD 120 Must be fully grouted frame)

Fasteners:

Jamb fixing at 600mm centres nominal

Expansion anchors eg. M10 countersunk

'Ramset' Dynabolts

M12 countersunk masonry screwbolts

Head Fixing (minimum):

Single door - none required

Paired door - single central fastener required

Wedging Gap:

0-15mm

Insulation rating:

To obtain an insulation rating, the steel frame must be packed with either;

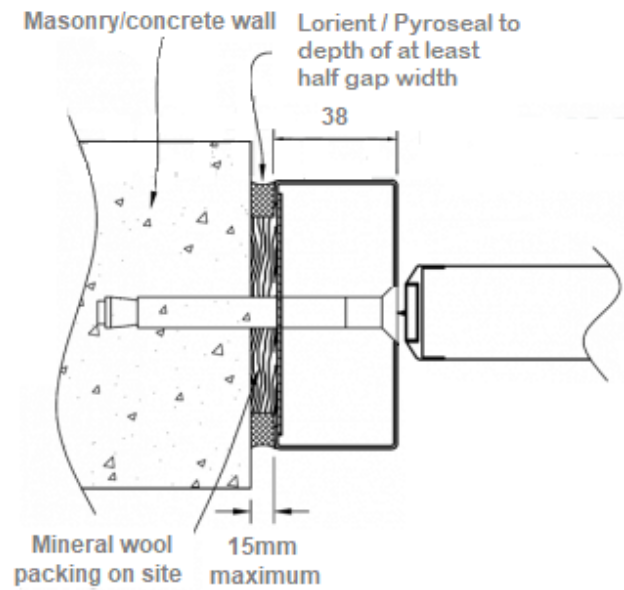
Plasterboard (30 minutes)

Cornice plaster (30 minutes)

Grout (60 minutes)

Mineral Wool (30 minutes)

No frame packing equals no insulation rating (i.e. -/xx/-)



FRAME PROFILE E

WALL TYPE: STEEL STUD

FRAME TYPE: STEEL

Frame materials available:

EGZ - 1.6mm

Cold rolled galvanized - 1.6mm

Stainless Steel - 1.5mm (PD 30 and PD 60 only)

Fasteners:

Boxed stud riveted with steel pop rivets or screwed with self tapping screws to frame bracing straps at 600mm centres minimum.

Steel studs may be riveted (steel pop rivets) or screwed (9g x 45mm self tapping) to the frame bracing straps.

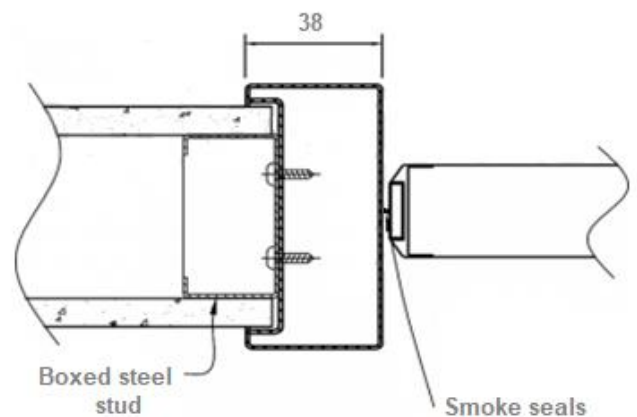
Head Fixing (minimum):

Single door - none required

Paired door - double central fastener required

Stud size:

65 x 34mm minimum of 0.55 SMG gauge



FRAME PROFILE E

Wedging gap:

Not applicable

Insulation rating:

To obtain an insulation rating, the steel frame must be packed with either;

Plasterboard (30 minutes)

Cornice plaster (30 minutes)

Grout (60 minutes)

Mineral Wool (30 minutes)

No frame packing equals no insulation rating (i.e. -/xx/-)

WALL TYPE: **STEEL STUD**

FRAME TYPE: **STEEL**

Frame materials available:

EG Z - 1.6 mm

Cold rolled galvanized - 1.6 mm

Stainless Steel - 1.5 mm (PD 30 and PD 60 only)

Fasteners:

Frame screwed to boxed stud at 600 mm centres nominal with self tapping screws.

Steel studs may be riveted (steel pop rivets) or screwed (9g x 45 mm self tapping) to the frame bracing straps at 600 centres nominal.

Head Fixing (minimum):

Single door - none required

Paired door - single central fastener required

Stud size:

65 x 34 mm minimum of 0.55 SM G gauge

Wedging gap:

Not applicable

Insulation rating:

To obtain an insulation rating, the steel frame must be packed with either;

Plasterboard (30 minutes)

Cornice plaster (30 minutes)

Grout (60 minutes)

Mineral Wool (30 minutes)

No frame packing equals no insulation rating (i.e. -/xx/-)

WALL TYPE: **STEEL STUD**

FRAME TYPE: **STEEL**

Frame materials available:

EG Z - 1.6 mm

Cold rolled galvanized - 1.6 mm

Stainless Steel - 1.5 mm (PD 30 and PD 60 only)

Fasteners:

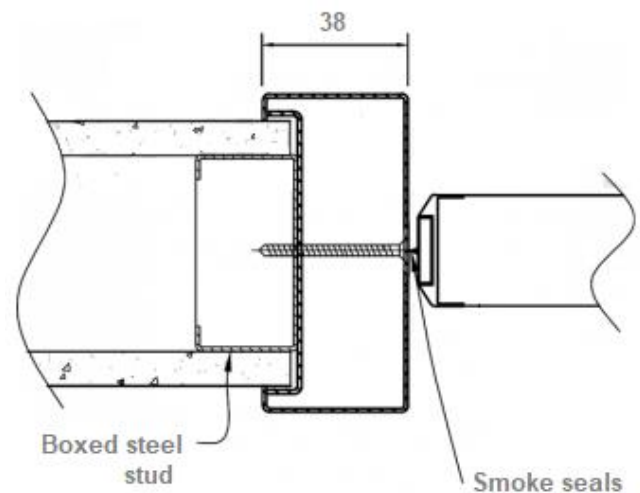
Frame screwed to boxed studs with packing steel shims at 600 centres nominal.

Steel studs may be riveted (steel pop rivets) or screwed (9g x 45 mm self tapping) to the frame bracing straps at 600 centres nominal.

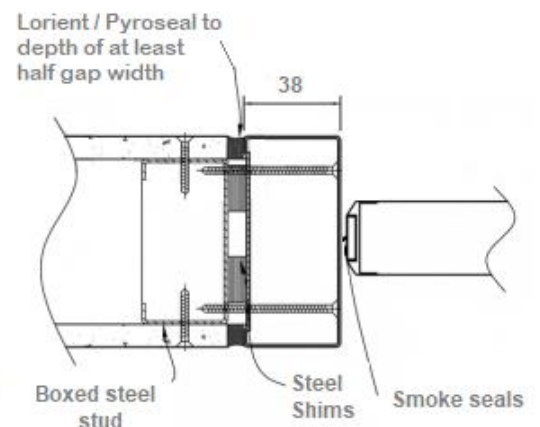
Head Fixing (minimum):

Single door - none required

Paired door - double central fastener required



FRAME PROFILE E



FRAME PROFILE E

Stud size:

65 x 34mm minimum of 0.55 SM G gauge

Wedging Gap:

0-10mm

Insulation rating:

To obtain an insulation rating, the steel frame must be packed with either;

Plasterboard (30 minutes)

Cornice plaster (30 minutes)

Grout (60 minutes)

Mineral Wool (30 minutes)

No frame packing equals no insulation rating (i.e. -/xx/-)