

## Best doors PC 60 Door Set -/60/60 sm Installation

WALL TYPE: **TIMBER STUD**

FRAME TYPE: **TIMBER**

Frame materials available:

Hardwood timber - Min. density 580 kg/m<sup>3</sup> (minimum thickness is 30mm)

Fasteners:

Frame - Either nailed (75 x 3.2mm) or screwed (10g x 75mm) at 600mm centres nominal. Two fixings per location.

Stops - nailed (50 x 3.2mm) at 200mm centres.

Architrave - nailed (50 x 3.2mm) at 400mm centres.

Pryda Jamb-fixa brackets Type JFB100 at 500mm centres may be used to fix profiles A & B to approved walls.

Head Fixing (minimum):

Single door - none required

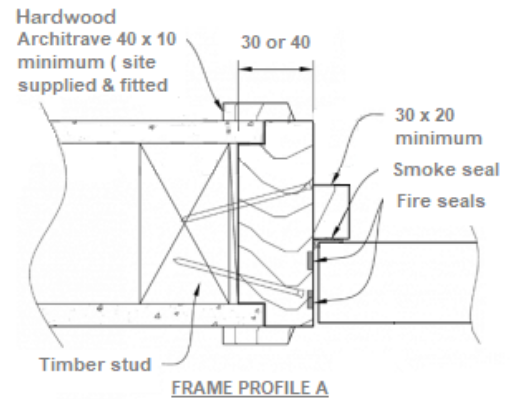
Paired door - single central fastener required

Stud size:

Ex 100 x 50 minimum.

Wedging gap:

0-10mm



WALL TYPE: **TIMBER STUD**

FRAME TYPE: **TIMBER**

Frame materials available:

Hardwood timber - Min. density 580 kg/m<sup>3</sup> (minimum thickness is 30mm)

Fasteners:

Frame - Either nailed (75 x 3.2mm) or screwed (10g x 75mm) at 600mm centres nominal. Two fixings per location.

Stops - nailed (50 x 3.2mm) at 200mm centres.

Architrave - nailed (50 x 3.2mm) at 400mm centres.

Pryda Jamb-fixa brackets Type JFB100 at 500mm centres may be used to fix profiles A & B to approved walls.

Head Fixing (minimum):

Single door - none required

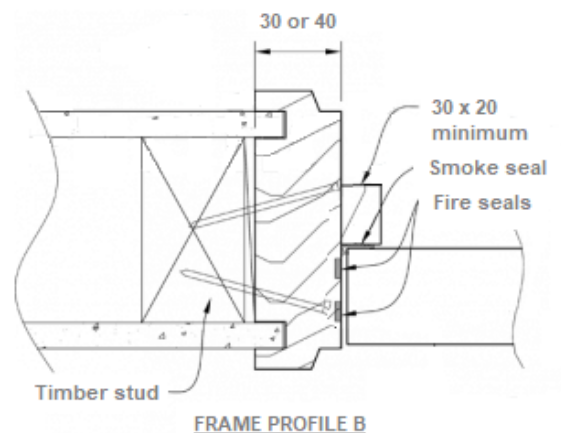
Paired door - single central fastener required

Stud size:

Ex 100 x 50 minimum.

Wedging gap:

0-10mm



WALL TYPE: **TIMBER STUD**

FRAME TYPE: **TIMBER**

Frame materials available:

Hardwood timber - Min. density 580 kg/m<sup>3</sup>  
(minimum thickness is 30 mm)

Fasteners:

Frame - Either nailed (75 x 3.2 mm) or screwed (10 g x 75 mm) at 600 mm centres nominal. Two fixings per location.

Stops - nailed (50 x 3.2 mm) at 200 mm centres.

Architrave - nailed (50 x 3.2 mm) at 400 mm centres.

Head Fixing (minimum):

Single door - none required

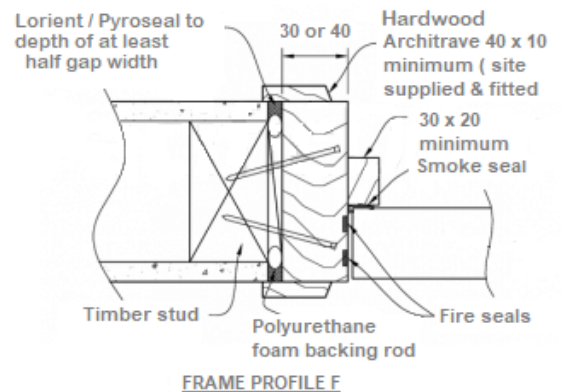
Paired door - single central fastener required

Stud size:

Ex 100 x 50 minimum.

Wedging gap:

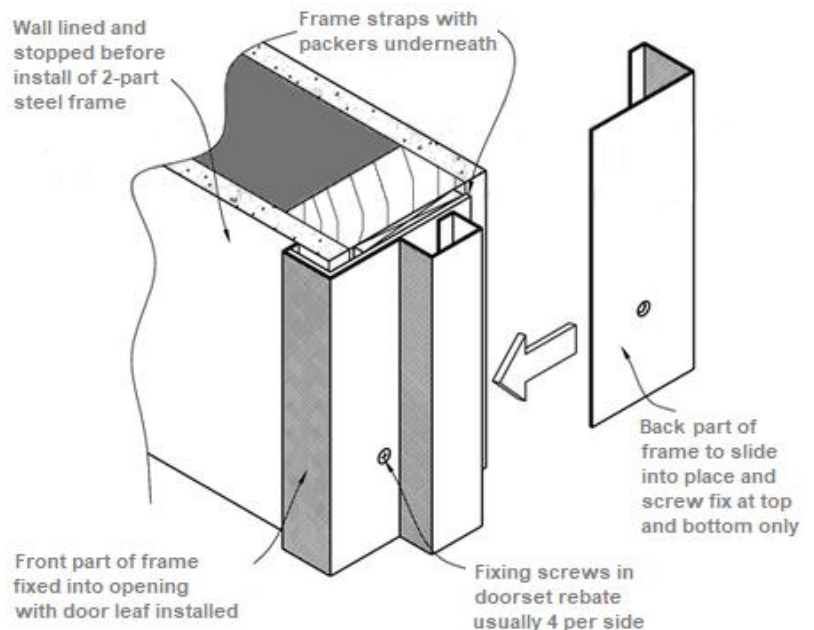
0-15 mm



WALL TYPE: **TIMBER STUD**

FRAME TYPE: **STEEL**

**2-PART STEEL FRAME IN TIMBER STUD**



WALL TYPE: **TIMBER STUD**

FRAME TYPE: **STEEL**

Frame materials available:

EGZ - 1.6 mm

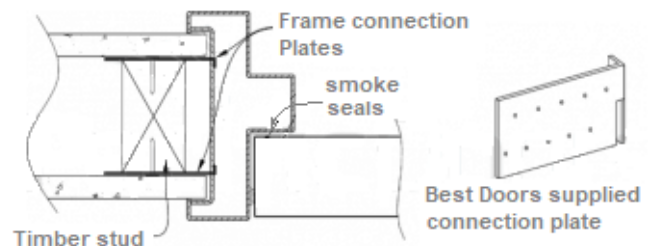
Cold rolled galvanized - 1.6 mm

Stainless Steel - 1.5 mm

Fasteners:

Folded steel connection plates (as shown) to be supplied with frames.

Hook onto frame bracing straps and nail or screw to timber studs.



**FRAME PROFILE D3**

Same method for G & J: wall thickness will determine profiles available

Frame connection plates either clouts (30 x 2.5 mm gib clouts) or screw fixed.

**Head Fixing (minimum):**

Single door - none required

Paired door - single central fastener required

**Stud size:**

Ex 100 x 50 minimum

**Wedging gap:**

Not applicable

**Insulation rating:**

To obtain an insulation rating, the steel frame must be packed with either;

Plasterboard (30 minutes)

Cornice plaster (30 minutes)

Grout (60 minutes)

Mineral Wool (30 minutes)

No frame packing equals no insulation rating (i.e. -/xx/-)

WALL TYPE: **TIMBER STUD**

FRAME TYPE: **STEEL**

**Frame materials available:**

EGZ - 1.6 mm

Cold rolled galvanized - 1.6 mm

Stainless Steel - 1.5 mm

**Fasteners:**

Framing stud No.1 screwed to jamb.

Connection to stud No.2 via rebated nail on plates. One fastener per location except at bottom where two fasteners are required.

Frame to be screw fixed (10g x 50mm self tapping) at 600mm nominal centres. Two fasteners per location where applicable.

**Head Fixing (minimum):**

Single door - none required

Paired door - double central fastener required

**Stud size:**

Ex 100x50 minimum

**Wedging gap:**

Not applicable

**Insulation rating:**

To obtain an insulation rating, the steel frame must be packed with either;

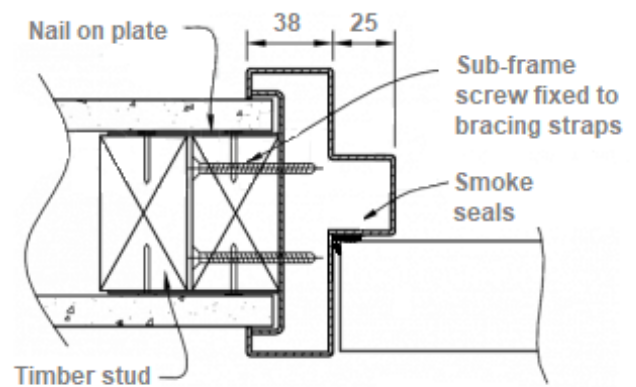
Plasterboard (30 minutes)

Cornice plaster (30 minutes)

Grout (60 minutes)

Mineral Wool (30 minutes)

No frame packing equals no insulation rating (i.e. -/xx/-)



**FRAME PROFILE D3**

Same method for G & J : wall thickness will determine profiles available

WALL TYPE: **TIMBER STUD**

FRAME TYPE: **STEEL**

Frame materials available:

EG Z - 1.6 mm

Cold rolled galvanized - 1.6 mm

Stainless Steel - 1.5 mm

Fasteners:

Frame screwed to stud through Gib Fyreline packing between stud and shim s.

Frame to be screw fixed (10g x 50mm self tapping) at 600mm nominal centres. Two fasteners per location where applicable.

Head Fixing (minimum):

Single door - none required

Paired door - double central fastener required

Stud size:

Ex 100 x 50 minimum

Wedging gap:

0-10 mm

Insulation rating:

To obtain an insulation rating, the steel frame must be packed with either;

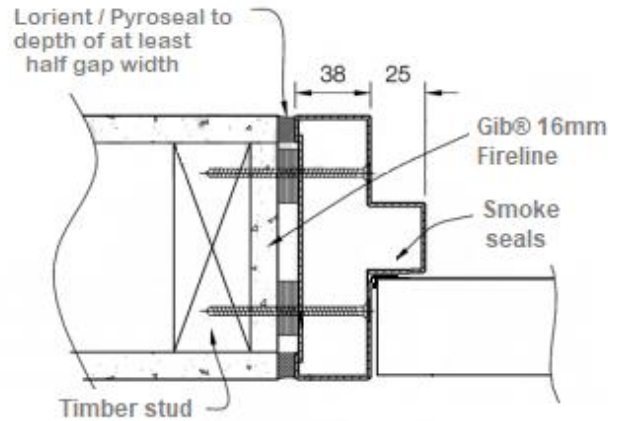
Plasterboard (30 minutes)

Cornice plaster (30 minutes)

Grout (60 minutes)

Mineral Wool (30 minutes)

No frame packing equals no insulation rating (i.e. -/xx/-)



**FRAME PROFILE D3**

Same method for G & J : wall thickness will determine profiles available

WALL TYPE: **TIMBER STUD**

FRAME TYPE: **STEEL**

Frame materials available:

EG Z - 1.6 mm

Cold rolled galvanized - 1.6 mm

Stainless Steel - 1.5 mm

Fasteners:

Frames may be screwed directly to studs either through the stud and into the frame bracing straps or through the frame into the timber stud at 600mm centres nominal.

Frame to be screw fixed (10g x 50mm self tapping) at 600mm centres nominal. Two fasteners per location where applicable.

Head Fixing (minimum):

Single door - none required

Paired door - double central fastener required

Stud size:

Ex 100 x 50 minimum

Wedging gap:

Not applicable

Insulation rating:

To obtain an insulation rating, the steel frame must be packed with either;

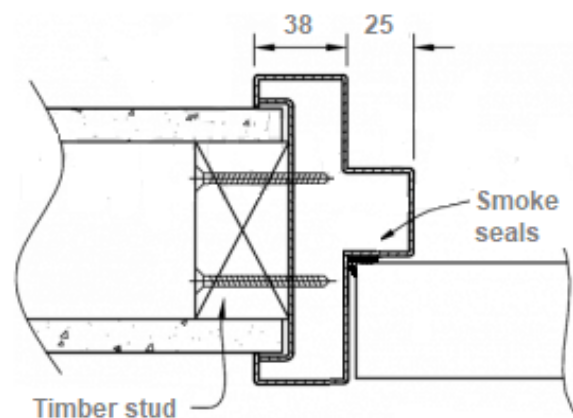
Plasterboard (30 minutes)

Cornice plaster (30 minutes)

Grout (60 minutes)

Mineral Wool (30 minutes)

No frame packing equals no insulation rating (i.e. -/xx/-)



**FRAME PROFILE D3**

Same method for G & J : wall thickness will determine profiles available

WALL TYPE : **SP E E D W A L L**

FRAME TYPE : **ST E E L**

Frame materials available :

EG Z - 1.6 m m

Cold rolled galvanized - 1.6 m m

Fasteners :

Jam b fixing at 60 m m centres minimum

10 x 30 m m Gauge self tapping screws

Head Fixing (minimum) :

Single door - 2 required

Paired door - 4 required

Wedging gap :

0 - 15 m m

Fire rating for unlined Speedpanel / Korok walls :

51 m m wall: Max. FRR -/6 0/3 0

64 m m wall: Max. FRR -/9 0/3 0

78 m m wall: Max. FRR -/1 2 0/3 0

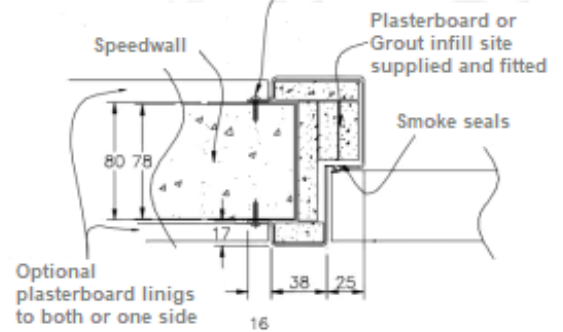
Integrity rating can be increased by 30 minutes by lining the wall one or both sides, up to a max. of 120 minutes.

Frame has to be filled with plasterboard or grout to achieve 30 minute insulation rating.

#### PC30 to PR120 Steel Frame in Speedwall

Note: Door must be fitted at time of wall construction

Holes drilled on site at nominal 600mm centres



FRAME PROFILE SHOWN IS THE ONLY PROFILE AVAILABLE FOR THIS WALL TYPE  
SIZE RESTRICTION APPLY

WALL TYPE : **SP E E D W A L L**

FRAME TYPE : **ST E E L**

Frame materials available :

EG Z - 1.6 m m

Cold rolled galvanized - 1.6 m m

Fasteners :

Jam b fixing 6 sets (i.e. 12 per jam b)

10 x 75 m m Gauge self tapping screws

Head Fixing (minimum) :

Single door - none required

Paired door - 1 set

Wedging gap :

0 - 15 m m

Fire rating for unlined Speedpanel / Korok walls :

51 m m wall: Max. FRR -/6 0/3 0

64 m m wall: Max. FRR -/9 0/3 0

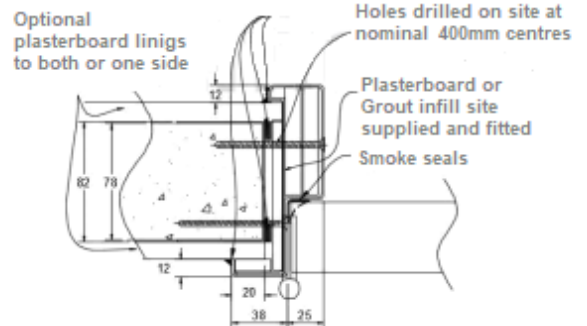
78 m m wall: Max. FRR -/1 2 0/3 0

Integrity rating can be increased by 30 minutes by lining the wall one or both sides, up to a max. of 120 minutes.

Frame has to be filled with plasterboard or grout to achieve 30 minute insulation rating.

#### PR30 to PR120 Steel Frame in Speedwall

Lorient / Pyroseal to a depth of at least half gap width both sides



WALL TYPE: **TIMBER STUD**

FRAME TYPE: **STEEL**

Frame materials available:

Cold rolled galvanized - 1.6mm packed with plasterboard

Fasteners:

Frame to be screw fixed with 10-14 x 75mm gauge counter sunk screws at 600mm centres nominal.

Head Fixing (minimum):

Single door - non required

Paired door - double central fastener required

Stud Size

Ex 100 x 50 minimum

Wedging gap:

0 - 10mm

Insulation rating:

To obtain an insulation rating, the steel frame must be packed with either;

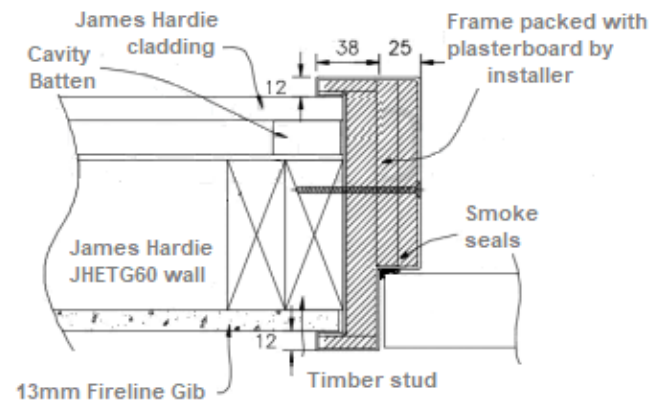
Plasterboard (30 minutes)

Cornice plaster (30 minutes)

Grout (60 minutes)

Mineral Wool (30 minutes)

No frame packing equals no insulation rating (i.e. -/xx/-)



WALL TYPE: **TIMBER STUD**

FRAME TYPE: **STEEL**

Frame materials available:

Cold rolled galvanized - 1.6mm packed with plasterboard

Fasteners:

Frame to be screw fixed with 10 x 75mm gauge screws at 600mm centres nominal.

Head Fixing (minimum):

Single door - non required

Paired door - double central fastener required

Stud Size

Ex 100 x 50 minimum

Wedging gap:

0 - 10mm

Insulation rating:

To obtain an insulation rating, the steel frame must be packed with either;

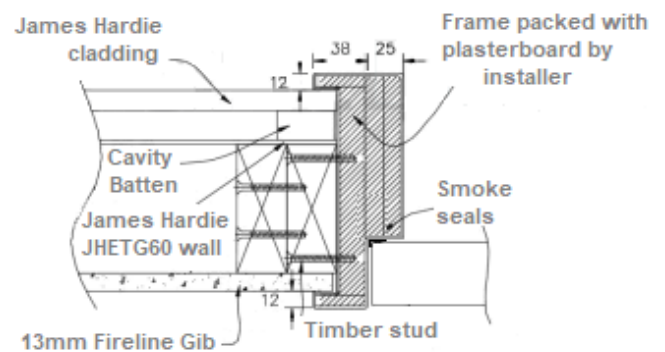
Plasterboard (30 minutes)

Cornice plaster (30 minutes)

Grout (60 minutes)

Mineral Wool (30 minutes)

No frame packing equals no insulation rating (i.e. -/xx/-)



WALL TYPE: **TIMBER STUD**

FRAME TYPE: **STEEL**

**Gib Universal wall systems - One way FRR only**

Please refer to Gib Fire Rated Systems manual for thickness and number of lining boards.

**Frame materials available:**

EG Z - 1.6 mm

Cold rolled galvanized - 1.6 mm

**Fasteners:**

Framing stud No.1 screwed to jamb.

Connection to stud No.2 via rebated nail on plates. One fastener per location except at bottom where two fasteners are required.

Frame to be screw fixed (10g x 50mm self tapping) at 600mm nominal centres. Two fasteners per location where applicable.

**Head Fixing (minimum):**

Single door - none required

Pair door - single central fastener required

**Stud size:**

Ex 100 x 50 minimum

**Wedging gap:**

Not applicable

**Insulation rating:**

To obtain an insulation rating, the steel frame must be packed with either;

Plasterboard (30 minutes)

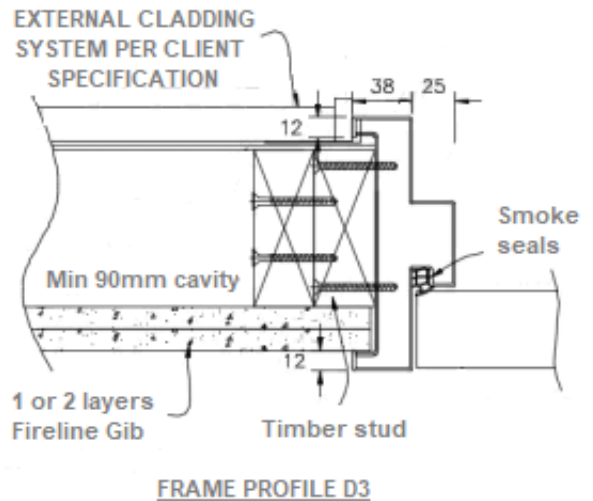
Cornice plaster (30 minutes)

Grout (60 minutes)

Mineral Wool (30 minutes)

No frame packing equals no insulation rating (i.e. -/xx/-)

### PC30 - PR90 STEEL FRAME INSTALLATION TO GIB-GBUW EXTERNAL ONE WAY FIRE WALL



WALL TYPE: **TIMBER STUD**

FRAME TYPE: **STEEL**

**Gib Universal wall systems - One way FRR only**

Please refer to Gib Fire Rated Systems manual for thickness and number of lining boards.

**Frame materials available:**

Cold rolled galvanized - 1.6 mm

**Fasteners:**

Frame screwed to stud

Frame to be screw fixed (10g x 50 mm self tapping) at 600 mm nominal centres. Two fasteners per location where applicable

**Head Fixing (minimum):**

Single door - none required

Pair door - double central fastener required

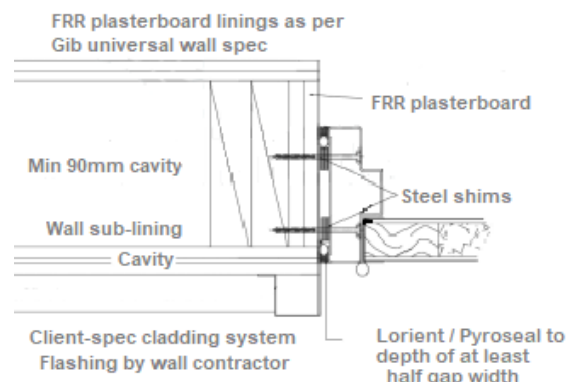
**Stud size:**

Ex 100 x 50 minimum

**Wedging gap:**

0-10 mm

**Insulation rating:**



To obtain an insulation rating, the steel frame must be packed with either;  
Plasterboard (30 minutes)  
Cornice plaster (30 minutes)  
Grout (60 minutes)  
Mineral Wool (30 minutes)  
No frame packing equals no insulation rating (i.e. -/xx/-)

**WALL TYPE: MASONRY**

**FRAME TYPE: TIMBER**

**Frame materials available:**

Hardwood timber - Min. density 580 kg/m<sup>3</sup> (minimum thickness is 30mm)

**Fasteners:**

Frame - M8 or M10 'Ramset' Dynabolts at 600mm centres nominal. Fixings on or near centre of frame jamb.

Stops - nailed (50 x 3.2mm) at 200mm centres.

Architrave - nailed (50 x 3.2mm) at 400mm centres.

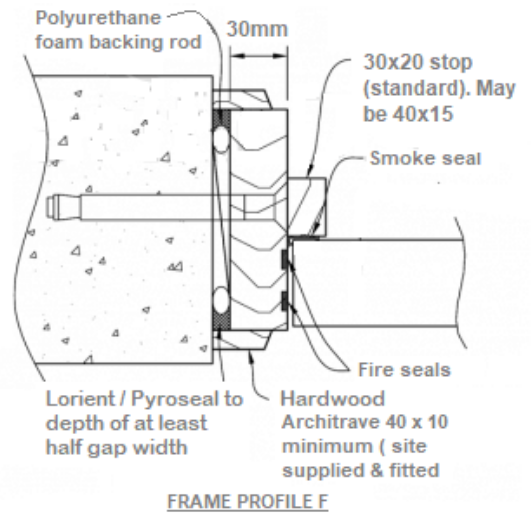
**Head Fixing (minimum):**

Single door - none required

Paired door - single central fastener required

**Wedging gap:**

0-15mm





WALL TYPE: MASONRY

FRAME TYPE: STEEL

Frame materials available:

EGZ - 1.6mm

Cold rolled galvanized - 1.6mm

Stainless Steel - 1.5mm (Must be fully grouted frame VP90-120)

Fasteners:

Jamb fixing at 600mm centres minimum

Expansion anchors eg. M10 countersunk

'Ramset' Dynabolts

M12 countersunk masonry screwbolts

Head Fixing (minimum):

Single door - none required

Paired door - single central fastener required

Wedging Gap:

0-15mm

Insulation rating:

To obtain an insulation rating, the steel frame must be packed with either;

Plasterboard (30 minutes)

Cornice plaster (30 minutes)

Grout (60 minutes)

Mineral Wool (30 minutes)

No frame packing equals no insulation rating (i.e. -/xx/-)

WALL TYPE: MASONRY

FRAME TYPE: STEEL

Frame materials available:

EGZ - 1.6mm

Cold rolled galvanized - 1.6mm

Fasteners:

Jamb fixing at 600mm centres minimum

8 - 10 Gauge self tapping screws

Head Fixing (minimum):

Single door - none required

Paired door - single central fastener required

Wedging Gap:

0-15mm

Fire rating for unlined Speedpanel / Korok walls:

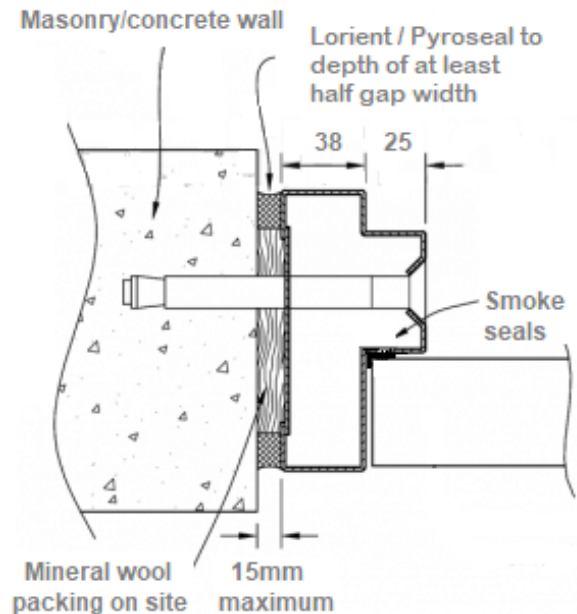
51 mm wall: Max. FRR -/60/30

64 mm wall: Max. FRR -/90/30

78 mm wall: Max. FRR -/120/30

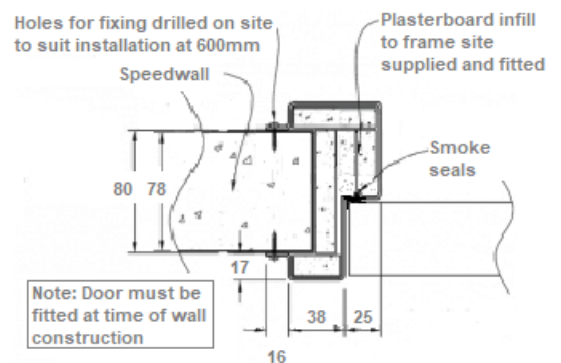
Integrity rating can be increased by 30 minutes by lining the wall one or both sides, up to a max. of 120 minutes.

Frame has to be filled with plasterboard or grout to achieve 30 minute insulation rating.



**FRAME PROFILE D3**

Same method for G & J: wall thickness will determine profiles available



Note: Door must be fitted at time of wall construction

**FRAME PROFILE SHOWN IS THE ONLY PROFILE AVAILABLE FOR THIS WALL TYPE**  
**NOTE: ON AVAILABLE AS SINGLE DOOR SET**

WALL TYPE: **STEEL STUD**

FRAME TYPE: **TIMBER**

Frame materials available:

Hardwood timber - Min. density 580 kg/m<sup>3</sup> ≥  
(minimum thickness is 30 mm)

Fasteners:

Frame - Screwed (10g x 50mm self tapping) at 600mm centres nominal. Minimum of one screw per location. Frames may also be installed by screw fixing the steel studs to the back of the timber frame during wall construction.

Stops - nailed (50 x 3.2mm) at 200mm centres.

Architrave - nailed (50 x 3.2mm) at 400mm centres.

Head Fixing (minimum):

Single door - none required

Paired door - single central fixing required

Stud size:

65 x 34mm minimum of 0.55 MSG gauge.

Wedging gap:

0-10mm

WALL TYPE: **STEEL STUD**

FRAME TYPE: **TIMBER**

Frame materials available:

Hardwood timber - Min. density 580 kg/m<sup>3</sup> ≥  
(minimum thickness is 30 mm)

Fasteners:

Frame - Screwed (10g x 50mm self tapping) at 600mm centres nominal. Minimum of one screw per location. Frames may also be installed by screw fixing the steel studs to the back of the timber frame during wall construction.

Stops - nailed (50 x 3.2mm) at 200mm centres.

Architrave - nailed (50 x 3.2mm) at 400mm centres.

Head Fixing (minimum):

Single door - none required

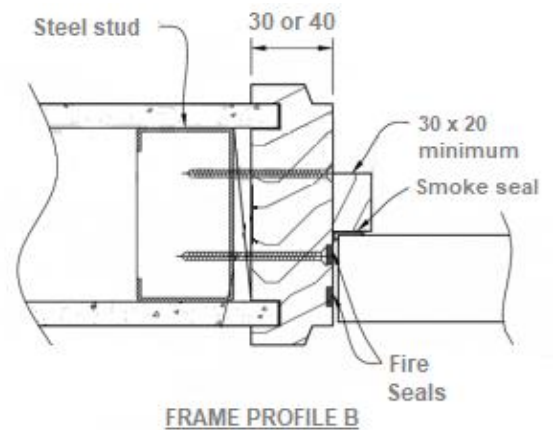
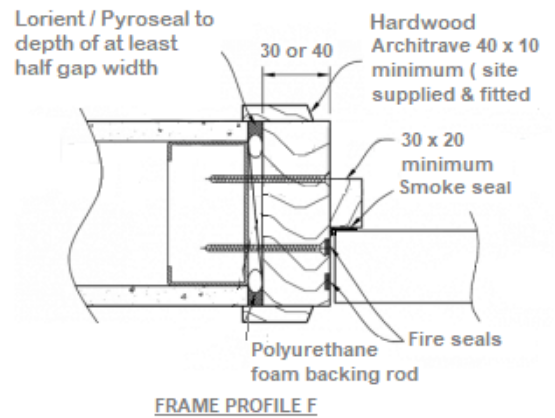
Paired door - single central fixing required

Stud size:

65 x 34mm minimum of 0.55 MSG gauge.

Wedging gap:

0-10mm



WALL TYPE: **STEEL STUD**

FRAME TYPE: **STEEL**

Frame materials available:

EG Z - 1.6 mm

Cold rolled galvanized - 1.6 mm

Stainless Steel - 1.5 mm

Fasteners:

Frame screwed to boxed stud at 600 mm centres nominal with self tapping screws.

Steel studs may be riveted (steel pop rivets) or screwed (9g x 45 mm self tapping) to the frame bracing straps at 600 mm centres nominal.

Head Fixing (minimum):

Single door - none required

Paired door - double central fastener required

Stud size:

65 x 34 mm minimum of 0.55 SM G gauge

Wedging gap:

Not applicable

Insulation rating:

To obtain an insulation rating, the steel frame must be packed with either;

Plasterboard (30 minutes)

Cornice plaster (30 minutes)

Grout (60 minutes)

Mineral Wool (30 minutes)

No frame packing equals no insulation rating (i.e. -/xx/-)

WALL TYPE: **STEEL STUD**

FRAME TYPE: **STEEL**

Frame materials available:

EG Z - 1.6 mm

Cold rolled galvanized - 1.6 mm

Stainless Steel - 1.5 mm

Fasteners:

Frame screwed to boxed studs with packing steel shims at 600 mm centres nominal.

Steel studs may be riveted (steel pop rivets) or screwed (9g x 45 mm self tapping) to the frame bracing straps at 600 mm centres nominal.

Head Fixing (minimum):

Single door - none required

Paired door - double central fastener required

Stud size:

65 x 34 mm minimum of 0.55 SM G gauge

Wedging Gap:

0-10 mm

Insulation rating:

To obtain an insulation rating, the steel frame must be packed with either;

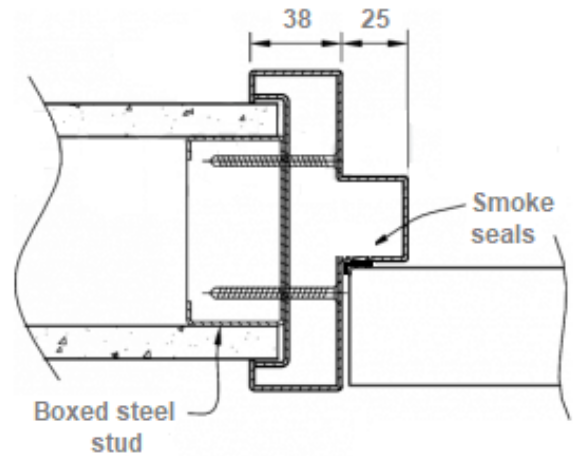
Plasterboard (30 minutes)

Cornice plaster (30 minutes)

Grout (60 minutes)

Mineral Wool (30 minutes)

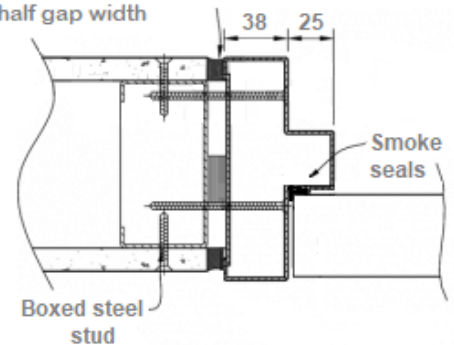
No frame packing equals no insulation rating (i.e. -/xx/-)



**FRAME PROFILE D3**

same method for G & J : wall thickness will determine profiles available

Lorient / Pyroseal to depth of at least half gap width



**FRAME PROFILE D3**

same method for G & J : wall thickness will determine profiles available