



STEEL HINGE DOOR
INSTALLATION GUIDE

03 7068 7667
admin@zenbg.com.au
zendoors.com.au

ZEN STEEL HINGE DOOR/DOUBLE DOORS / INSTALLATION

1. HINGE DOORS - INSTALLING THE JAMB

First, install the iron door jamb to your opening timber frame, steel frame or masonry wall structure.

The hinge doors will always arrive packed separately to the door jamb. Total weight is (35kg per square metre for single glazed, 65kg per square metre double glazed) we recommend at least 2 people to lift the frame into place and then hang the door/s. Other devices such as pallet jacks, lifts and dolly's can be used as long as adequate support and protection is applied at the lifting points. We recommend all people handling the doors wear gloves to avoid marking the doors and causing any scratches.

NOTE: Hinge Doors without a sill/threshold have a lower support steel bar installed for shipment, this needs to be unscrewed prior to installation.

We have two mounting methods for the iron door jamb and your door will either have the mounting tabs on the outside of the jamb or pre drilled holes on the inside of the jamb.

NOTE: These are detailed on the shop drawing and should be positioned carefully during the design phase.

There are usually 4 mounting tabs/holes (and sometimes 6 or more depending on the size of the door). The tabs are bolted into the structural framing from the inside of the house and the holes are bolted from inside of the jamb using timber screws (not supplied). You should use two screws/bolts per tab and one screw/bolt per mounting hole. Holes are usually 13mm on the inside edge and 8mm on the outside edge. We will supply 13mm plastic hole covers. **Your installer will need to supply the correct fixings based on your substrate.**

IMPORTANT – Initially, only fasten the left and right top most tabs/holes to the house framing. This is necessary to allow for some adjustment of the frame later.

NOTE: The steel door jamb and door panel need to be installed so they line up and function correctly in unison. We have pre hung and tested all doors prior to shipment so we know they work, the handles line up, latches and locks line up and door panels are not rubbing or hitting the jamb. It is your installers responsibility to get this right, they need to work with the jamb and door, not the opening. Sometimes you may need to pack out one side of the jamb out of plumb based on the steel frame, which can be rigid. The jambs and doors are all custom welded by hand, not by machine so they will not be one hundred percent plumb, this needs to be factored into the installation process, which differs from a timber door and jamb.

SIDELIGHTS AND/OR TRANSOM

If you have separate sidelights you will use joining bolts to fix them to the door jamb first. Apply all weather caulking between the sidelights and the jamb before joining.

Once joined together, the whole unit is bolted to the house framing as per above instructions.

If you have a separate transom, it is mounted above the door jamb and fastened into the framework just like the door.

Install the door jamb first and then the transom.

Apply caulking to the bottom of the transom before joining to the door jamb.

With the door closed and looking from inside, check that the door is square. If it's not, then the jamb is slightly out. You must move the bottom of the jamb to the left or right until the door lines up exactly.

2. HINGE DOORS – PREPARING HINGES

Prior to hanging the hinge door panels, make sure the hinge bearings are installed. The hinge bearing is a brass washer that must be in place on each hinge pin before the door is hung.

The two or three heavy hinges should receive a very light application of oil or grease on both sides before the doors are hung.

DO NOT get grease onto the painted surfaces as this can cause damage.

3. HINGE DOORS – HANGING THE DOORS

Lift each door onto its hinge pins. As the doors are quite heavy, (35kg per sqm single glazed & 65kg per sqm double glazed) we recommend at least 2 people per door and please wear gloves if possible.

If you have a double door, after the doors are hung, use the flush bolts on the edge of the inactive door to hold it closed.

4. HINGE DOORS – ADJUSTMENT

Even though you have checked your framing is plumb, there may be some small adjustment needed to ensure your doors are installed correctly.

For double doors if the top of the doors are not square the bottom of the door frame must be adjusted to the left or right slightly. The door tops and bottoms will line up perfectly in the centre when the frame is square.

Next check that your door closes evenly from top to bottom. If, when you close your door, the top or the bottom touches the astragal first then the jamb is slightly twisted.

You can adjust this by moving the appropriate tab inwards (towards the inside of the house) or outwards (towards the outside of the house) until the doors close evenly top and bottom at the same time.

Once everything is adjusted correctly then secure the lower tabs in place with the lag bolts.

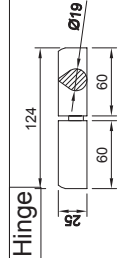
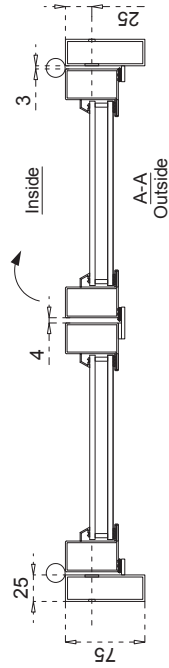
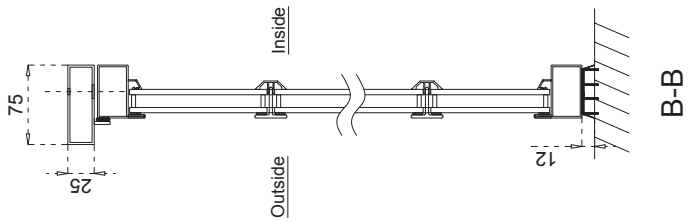
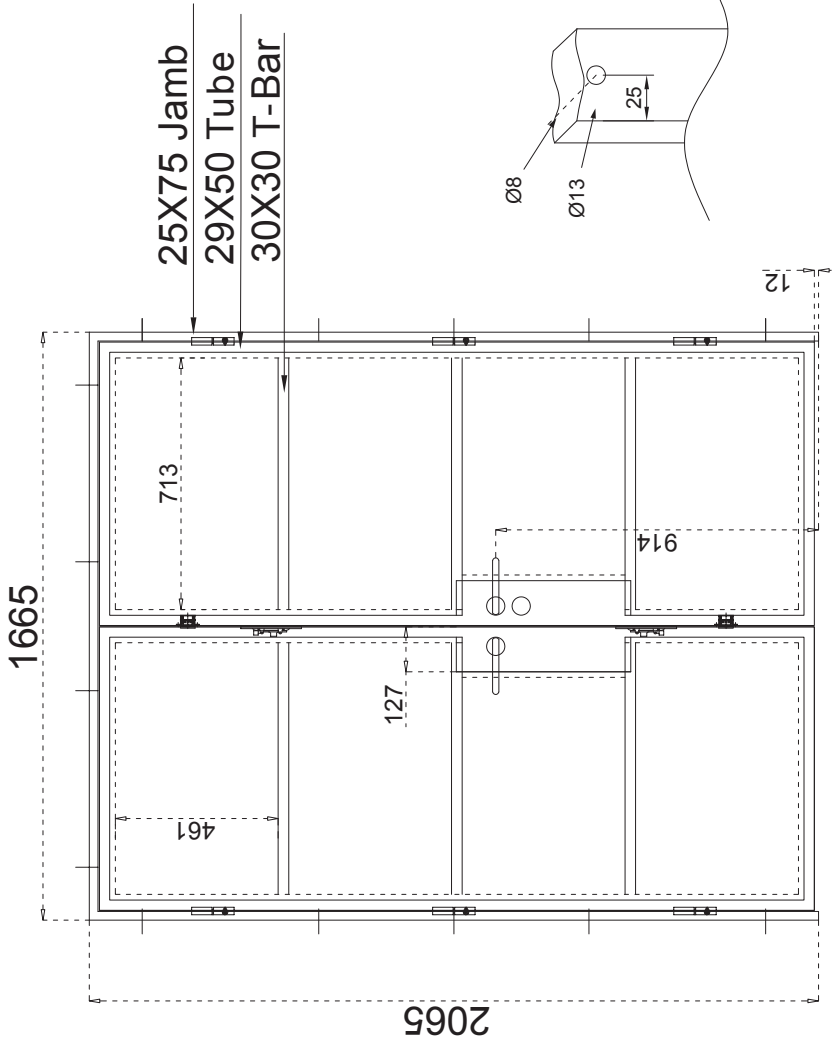
IMPORTANT – Check the fit of the doors once again to make sure nothing moved while you were tightening the bolts.

NOTE: Your door and frame have been pre hung and tested in the factory, if you have anything misaligned such as deadbolt, latch or other you need to adjust your frame, adjust the roller catches. You should have no issue with the alignment of the lock or latch. If there is an issue and you have tried all of the above, please send photos with measurements to admin@zenbg.com.au

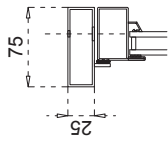
ZEN STEEL HINGE DOUBLE DOORS / CAD DRAWING



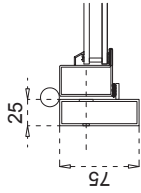
OUTSIDE VIEW



Installation	
Jamb:	25mmx75mm
Mounting:	Bolt thru Jamb
Head:	

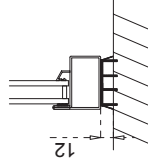


A
Side Jamb:



B
Threshold:

No



C
Customer Approval

B.G.L01.7322.001	U11/S2/BK	handle + cover - 2755-trunk body + keys	Black	
B.G.L01.7322.002	C317322/BK	handle + cover	Black	

B.G.L01.7322.001
B.G.L01.7322.002

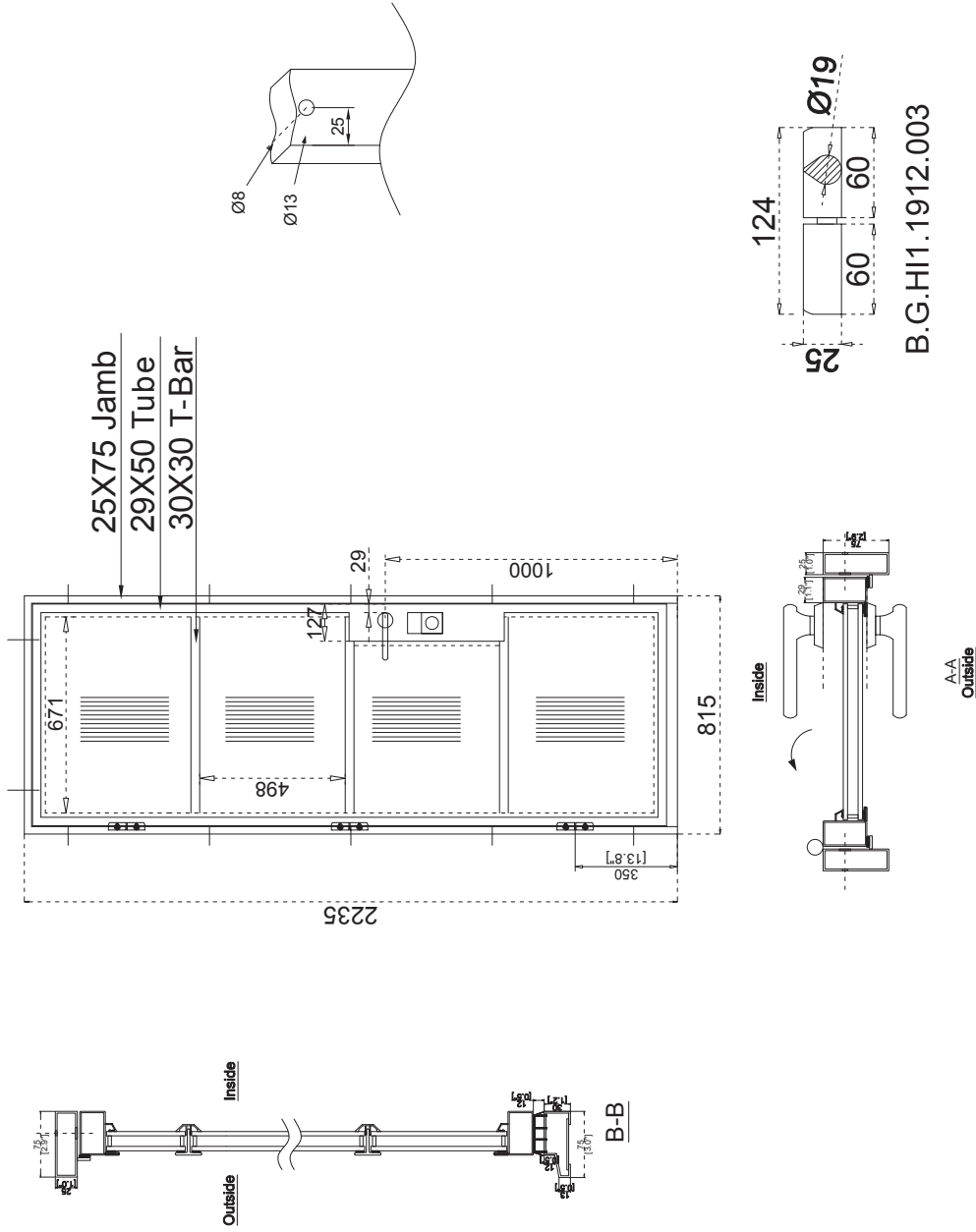
ID:	INV1110-W06 (Entry Doors)	Finish:	#1 Black	Active:	Open:	Right Hand	PU Foam:	Yes	Note:
Qty:	1 Set	Glass:	#0 Clear	Open:	Screen:	Inswing	Packing:	Wood box	B.G.HI1.1912.003
Design:	Custom	Size:	Dual pane	Screen:	Thermal break:	No	Shipping:	FCL	
Size:	1665mmx2065mm		Fixed	Thermal break:		No	Date:		2023-05-31 WZW(W451)

ZEN STEEL HINGE DOOR / CAD DRAWING

B.G.L01.7322.003	C917322/BK	Handle + latch	Black
------------------	------------	----------------	-------

B.G.L01.7322.003

OUTSIDE VIEW



K.G.W451.001



Installation

Jamb: 25mmx75mm
Mounting: counter sunk 8/13
Head:

A
Side Jamb:

B
Threshold:

C
Customer Approval

ID:	INV1078 1 set	Finish:	#1 Black	Active:	Left Hand	PU Foam:	Yes	Note:
Qty:	1 Set	Open:	#7 Recessed +#0 Clear	Open:	In-swing	Packing:	Foam wrapped	
Design:	Custom	Screen:	Dual pane	Screen:	No	Shipping:	FCL	
Size:	H2235 x W815	Thermal break:	Fixed	Thermal break:	No	Date:	2023.4.26Susie	

B.G.HI1.1912.003