



IRON PIVOT ENTRY DOOR
INSTALLATION GUIDE

03 7068 7667
admin@zenbg.com.au
zendoors.com.au

ZEN IRON PIVOT DOOR / INSTALLATION

1. PIVOT DOORS - INSTALLING THE JAMB

First, install the iron door jamb to your opening timber frame, steel frame or masonry wall structure.

NOTE: Any Iron Entry Doors that are installed not in accordance with these guidelines shall void the warranty, for example any doors secured to an aluminium frame or timber window or door frame, as these are not structural and will not provide enough support for the iron door.

Also Iron Doors **must be installed setback a minimum 1-1.5 metres under roof cover/porch** to be protected from direct exposure to rain and prolonged direct sunlight. Failure to follow these requirements will **void** any warranty claims.

The pivot doors will always arrive packed separately to the door jamb. Total weight is (85kg per square metre) we recommend 4-5 people to lift the frame into place and then hang the door. Other devices such as pallet jacks, lifts and dolly's can be used as long as adequate support and protection is applied at the lifting points. We recommend all people handling the doors wear gloves to avoid marking the doors and causing any scratches.

NOTE: Pivot Doors without a sill/threshold have a lower support steel bar installed for shipment, this needs to be unscrewed prior to installation.

We have two mounting methods for the iron door jamb and your door will either have the mounting tabs on the outside of the jamb or pre drilled holes on the inside of the jamb.

NOTE: These are detailed on the shop drawing and should be positioned carefully during the design phase.

There are usually 4 mounting tabs/holes (and sometimes 6 or more depending on the size of the door). The tabs are bolted into the structural framing from the inside of the house and the holes are bolted from inside of the jamb using the timber screws or masonry bolts. You should use two screws/bolts per tab and one screw/bolt per mounting hole.

IMPORTANT – Initially, only fasten the left and right top most tabs/holes to the house framing. This is necessary to allow for some adjustment of the frame later.

SIDELIGHTS AND/OR TRANSOM

If you have separate sidelights you will use joining bolts to fix them to the door jamb first. Apply all weather caulking between the sidelights and the jamb before joining. Once joined together, the whole unit is bolted to the house framing as per above instructions.

If you have a separate transom, it is mounted above the door jamb and fastened into the framework just like the door. Install the door jamb first and then the transom. Apply caulking to the bottom of the transom before joining to the door jamb.

Looking from inside, check that the door jamb is square. If it's not, then the jamb is slightly out. You must move the bottom of the jamb to the left or right until the door lines up exactly.

2. HINGE DOORS – PREPARING FLOOR PIVOT HARDWARE

Prior to hanging the door panel, make sure the floor/sill mounted pivot hardware is installed. If there is a sill the holes have already been pre drilled and you just need to fit the floor pin to the sill. If there is no sill, you will need to bolt the floor pin to the finished floor. Based on your flooring height and shop drawing approval you should have the required clearance for the door panel to be hung. The pivot floor pin must be installed on top of the finished floor with adequate space on either side and not on the edge of a slab. You will need to line up the floor pin with the top hinge which is already rebated into the head jamb. This will need to be done with a laser. We recommend a qualified door carpenter undertake these types of installs.

3. PIVOT DOORS – HANGING THE DOORS

Lift the door into position, the top pins is spring loaded so will retract, once the door is in position over the bottom pin, the top pin can be released into the hole on top of the door panel. As the doors are quite heavy, (85kg per sqm) we recommend 3-4 people per door and please wear gloves if possible.

4. PIVOT DOORS – ADJUSTMENT

Even though you have checked your framing is plumb, there may be some small adjustment needed to ensure your door is installed correctly.

The pivot hardware can be adjusted with the L tool provided in the box.

Next check that your door closes evenly from top to bottom. If, when you close your door, the top or the bottom touches the astragal first then the jamb is slightly twisted.

You can adjust this by moving the appropriate tab inwards (towards the inside of the house) or outwards (towards the outside of the house) until the door closes evenly top and bottom.

Once everything is adjusted correctly then secure the lower tabs in place with the lag bolts.

IMPORTANT – Check the fit of the door once again to make sure nothing moved while you were tightening the bolts.

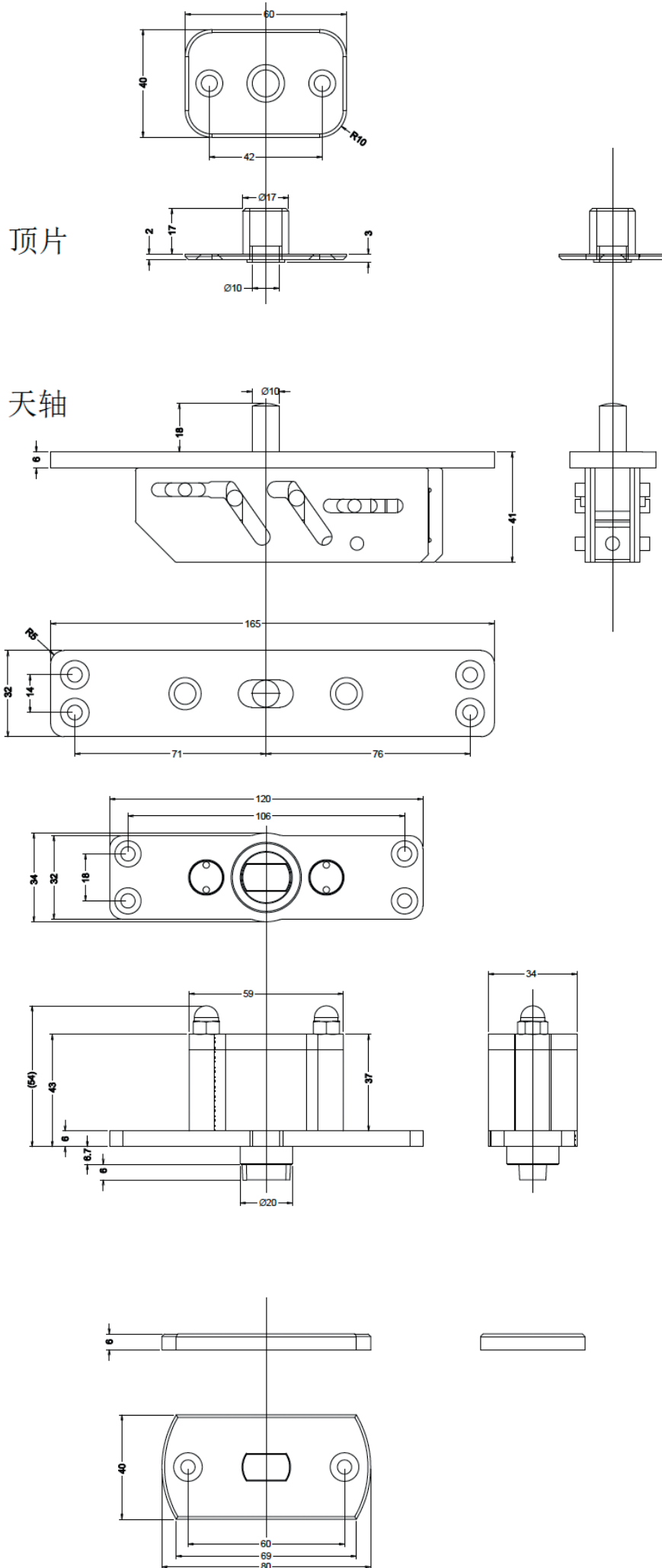
5. HARDWARE INSTALLATION

The handles fixings have all been pre drilled and tested on the door, the back plate needs to be fitted to the door first, then the handles screwed to the back plate. If the holes are not aligning please swap the inside handle with the outside and check again, if the round handle please rotate the handle until the holes match up.

NOTE: You will need to cut the supplied rubber drop seal 90mm where the pivot floor pin is located so the door panel can rotate without binding. Try to keep the cut neat and tidy and no more than the length of the pivot floor plate.

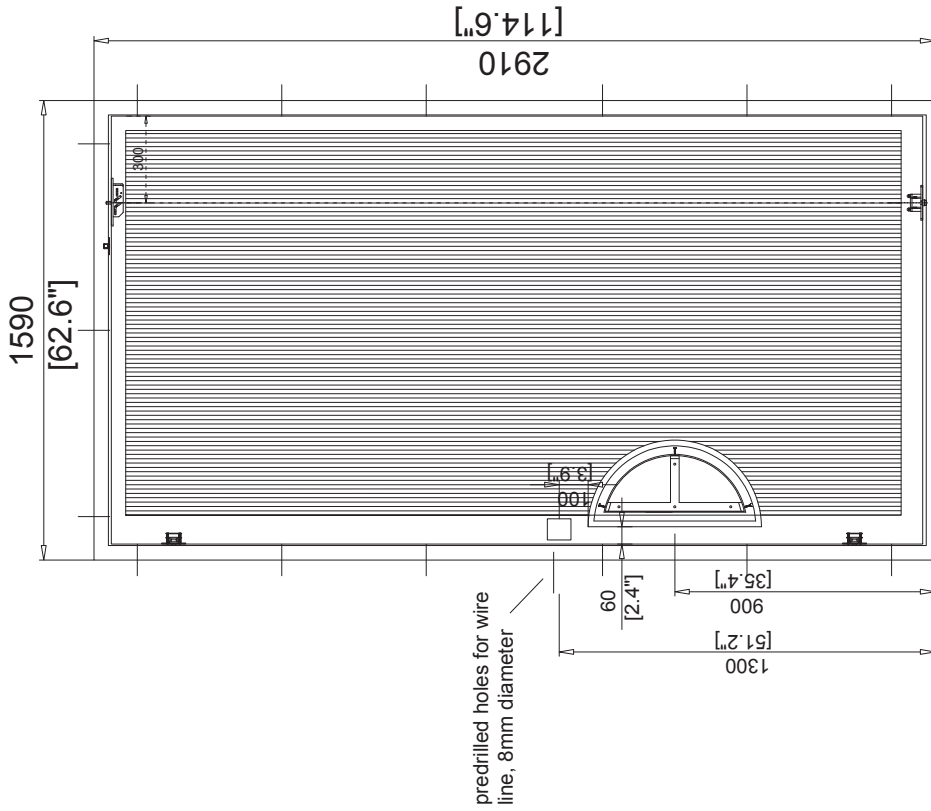
NOTE: Your door and frame have been pre hung and tested in the factory, if you have anything misaligned such as deadbolt, latch or other you need to adjust your frame, adjust the roller catches. You should have no issue with the alignment of the lock or latch.

ZEN IRON PIVOT DOOR / 500KG RATED HARDWARE



ZEN IRON PIVOT DOOR / CAD DRAWING

OUTSIDE VIEW

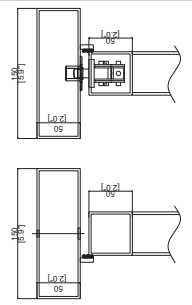


Electric Strike

ID:	INV1052 - 1 set	Finish:	#1 Black	Active:	Right Hand	INSIDE	PU Foam:	Yes	Note:
Qty:	1 Set	Glass:	None	Open:	Inswing		Packing:	Foam wrapped	
Design:	Zen Batten		No glass	Screen:	No		Shipping:	LCL	
Size:	2910x1590			Thermal break:	No	Date:		2023.04.27 K.	

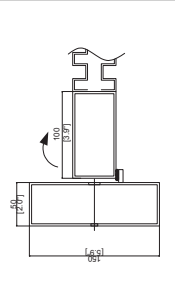
Installation

Jamb: 50x150
Mounting: Bolt thru Jamb
Head:



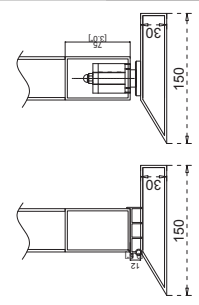
A

Side Jamb:



B

Threshold: Yes



C

Customer Approval