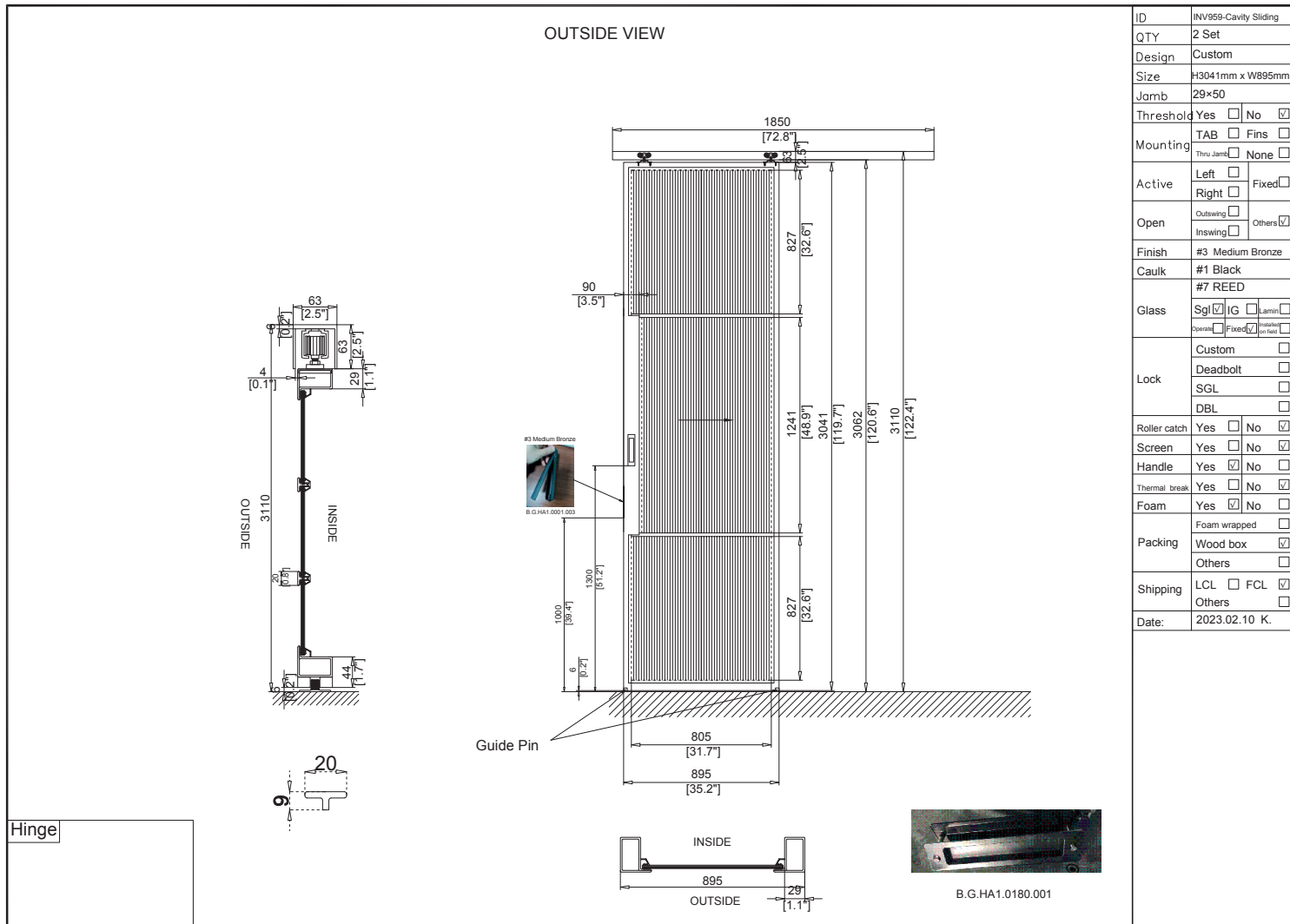




STEEL INTERNAL & CAVITY SLIDING DOOR  
INSTALLATION GUIDE

**03 7068 7667**  
[admin@zenbg.com.au](mailto:admin@zenbg.com.au)  
[zendoors.com.au](http://zendoors.com.au)

# ZEN STEEL INTERNAL & CAVITY SLIDING DOOR / CAD DRAWING



## 1. INTERNAL & CAVITY SLIDING DOOR - INSTALLING THE TRACK

Prior to installation make sure the prepared cavity pocket is minimum 60mm between walls to house the steel frame sliding door which is 50mm thick.

First, install the sliding track to the above timber frame opening. You will need to drill the required holes in the track based on the overall length of track. Use timber screws to fix frame into place.

**NOTE:** Make sure the track is screwed to the top timber framing perfectly level with the wheels and stoppers already installed in the track.

*The steel door panels in single glazing are approx 35kg per sqm.*

## 2. INTERNAL CAVITY SLIDING DOOR - INSTALLING THE DOOR

Install the door panel onto the wheels via the pre drilled holes at the top of the door. The door has been tested and these holes should match up with the provided wheel assembly.

Adjust the wheels and door height to suit the opening.

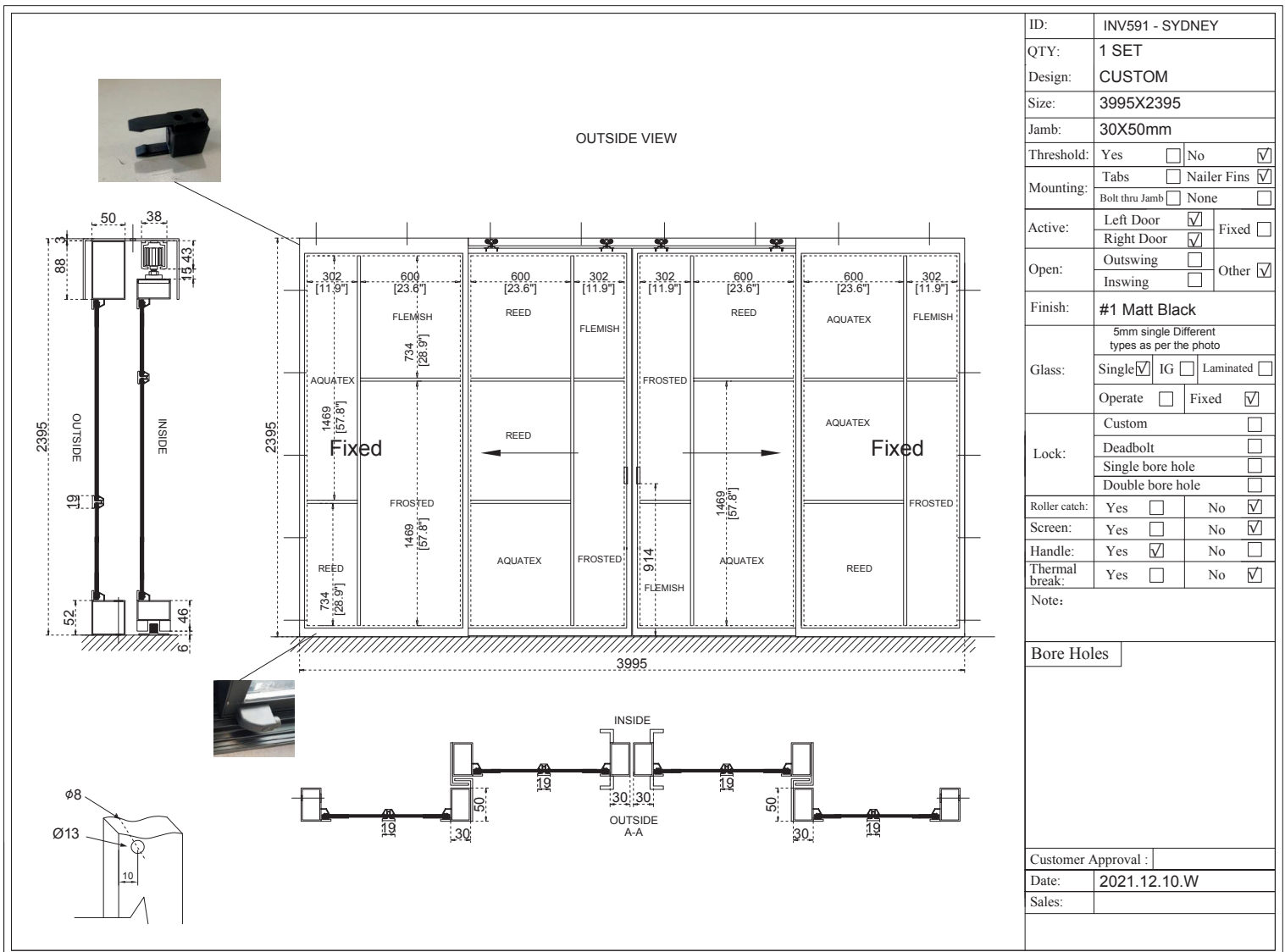
Install your floor guide down to the finished floor below, flush with the cavity opening and in-line with the sliding track above so the door is straight and travels in a straight line over the guide.



STEEL SLIDING DOORS & FIXED WINDOWS  
INSTALLATION GUIDE

**03 7068 7667**  
admin@zenbg.com.au  
zendoors.com.au

# ZEN STEEL CAVITY SLIDING DOOR / CAD DRAWING



## 1. SLIDING DOUBLE DOORS & FIXED WINDOWS - INSTALLING THE COVER AND TRACK

Install the steel cover plate into the opening by fixing screws through the top into structural opening.

First, install the sliding track to the above timber frame opening. You will need to drill the required holes in the track based on the overall length of track. Use timber screws to fix frame in to place.

**NOTE:** Make sure the track is screwed to the top timber framing perfectly level with the wheels and stoppers already installed in the track.

*The steel door panels in single glazing are approx 35kg per sqm.*

Your fixed panels are fitted within the cover also at the top and on the sides to the structural opening via pre drilled mounting holes, there should be caps supplied to cover the holes after you have screwed the frame in.

## 2. SLIDING DOUBLE DOORS & FIXED WINDOWS - INSTALLING THE DOORS & FIXED WINDOWS

Your fixed panels are fitted within the cover also at the top and on the sides to the structural opening via pre drilled mounting holes, there should be caps supplied to cover the holes after you have screwed the frame in.

Install the door panels onto the wheels via the pre drilled holes at the top of the door. The door has been tested and these holes should match up with the provided wheel assembly.

Adjust the wheels and door height to suit the opening.

Install your floor guides down to the flooring underneath in line with the track above so the doors are straight and can travel in a straight line and overlap the fixed panel on either side.



IRON HINGE ENTRY DOOR  
INSTALLATION GUIDE

**03 7068 7667**  
[admin@zenbg.com.au](mailto:admin@zenbg.com.au)  
[zendoors.com.au](http://zendoors.com.au)

# ZEN IRON HINGE DOOR/DOUBLE DOORS / INSTALLATION

## 1. HINGE DOORS - INSTALLING THE JAMB

First, install the iron door jamb to your opening timber frame, steel frame or masonry wall structure.

**NOTE:** Any Iron Entry Doors that are installed not in accordance with these guidelines shall void the warranty, for example any doors secured to an aluminium frame or timber window or door frame, as these are not structural and will not provide enough support for the iron door.

Also Iron Doors **must be installed setback a minimum 1-1.5 metres under roof cover/porch** to be protected from direct exposure to rain and prolonged direct sunlight. Failure to follow these requirements will **void** any warranty claims.

*The hinge doors will always arrive packed separately to the door jamb. Total weight is (85kg per square metre) we recommend 4-5 people to lift the frame into place and then hang the door. Other devices such as pallet jacks, lifts and dolly's can be used as long as adequate support and protection is applied at the lifting points. We recommend all people handling the doors wear gloves to avoid marking the doors and causing any scratches.*

**NOTE:** Hinge Doors without a sill/threshold have a lower support steel bar installed for shipment, this needs to be unscrewed prior to installation.

We have two mounting methods for the iron door jamb and your door will either have the mounting tabs on the outside of the jamb or pre drilled holes on the inside of the jamb.

**NOTE:** These are detailed on the shop drawing and should be positioned carefully during the design phase.

There are usually 4 mounting tabs/holes (and sometimes 6 or more depending on the size of the door). The tabs are bolted into the structural framing from the inside of the house and the holes are bolted from inside of the jamb using the M8 timber screws or masonry bolts provided. You should use two screws/bolts per tab and one screw/bolt per mounting hole.

**IMPORTANT** – Initially, only fasten the left and right top most tabs/holes to the house framing. This is necessary to allow for some adjustment of the frame later.

## **SIDELIGHTS AND/OR TRANSOM**

If you have separate sidelights you will use joining bolts to fix them to the door jamb first. Apply all weather caulking between the sidelights and the jamb before joining. Once joined together, the whole unit is bolted to the house framing as per above instructions.

If you have a separate transom, it is mounted above the door jamb and fastened into the framework just like the door. Install the door jamb first and then the transom. Apply caulking to the bottom of the transom before joining to the door jamb.

With the door closed and looking from inside, check that the door is square. If it's not, then the jamb is slightly out. You must move the bottom of the jamb to the left or right until the door lines up exactly.

## 2. HINGE DOORS – PREPARING HINGES

Prior to hanging the hinge door panels, make sure the hinge bearings are installed. The hinge bearing is a thick brass washer that must be in place on each hinge pin before the door is hung.

The two or three heavy hinges should receive a very light application of oil or grease on both sides before the doors are hung.

**DO NOT** get grease onto the painted surfaces as this can cause damage.

## 3. HINGE DOORS – HANGING THE DOORS

Lift each door onto its hinge pins. As the doors are quite heavy, (85kg per sqm) we recommend 3-4 people per door and please wear gloves if possible.

If you have a double door, after the doors are hung, use the flush bolts on the edge of the inactive door to hold it closed.

## 4. HINGE DOORS – ADJUSTMENT

Even though you have checked your framing is plumb, there may be some small adjustment needed to ensure your doors are installed correctly.

For double doors if the top of the doors are not square the bottom of the door frame must be adjusted to the left or right slightly. The door tops and bottoms will line up perfectly in the centre when the frame is square.

Next check that your door closes evenly from top to bottom. If, when you close your door, the top or the bottom touches the astragal first then the jamb is slightly twisted.

You can adjust this by moving the appropriate tab inwards (towards the inside of the house) or outwards (towards the outside of the house) until the doors close evenly top and bottom at the same time.

Once everything is adjusted correctly then secure the lower tabs in place with the lag bolts.

**IMPORTANT** – Check the fit of the doors once again to make sure nothing moved while you were tightening the bolts.

## 5. HARDWARE INSTALLATION

The handles fixings have all been pre drilled and tested on the door, the back plate needs to be fitted to the door first, then the handles screwed to the back plate. If the holes are not aligning please swap the inside handle with the outside and check again, if the round handle please rotate the handle until the holes match up.

**NOTE:** You will need to cut the supplied rubber drop seal 90mm where the pivot floor pin is located so the door panel can rotate without binding. Try to keep the cut neat and tidy and no more than the length of the pivot floor plate.

**NOTE:** Your door and frame have been pre hung and tested in the factory, if you have anything misaligned such as deadbolt, latch or other you need to adjust your frame, adjust the roller catches. You should have no issue with the alignment of the lock or latch.

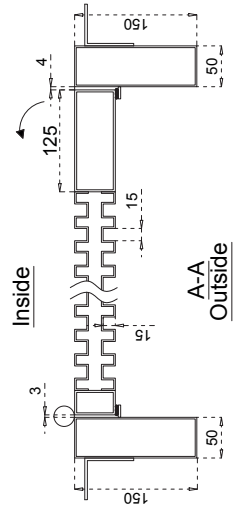
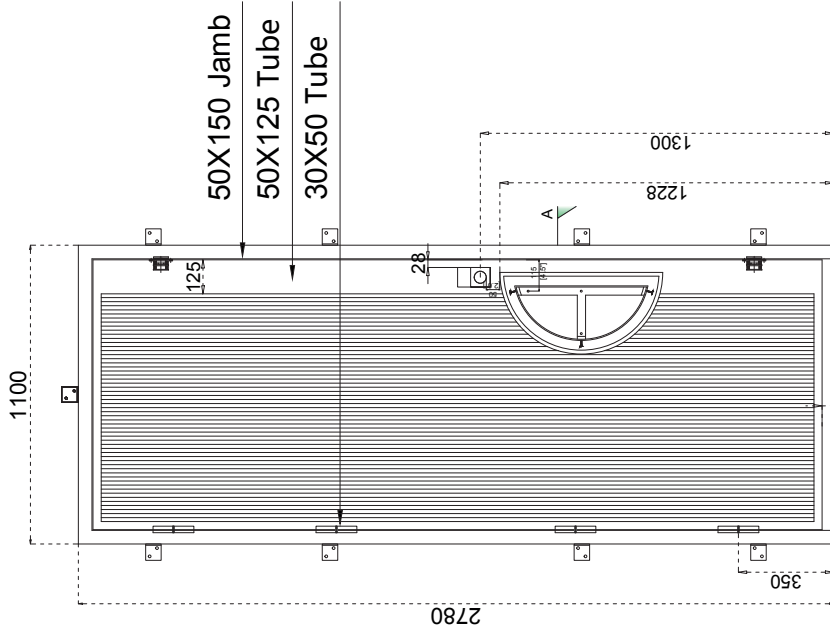
# ZEN IRON HINGE DOOR / CAD DRAWING

ID	INV1035 - 1 set
QTY	1
Design	Batten Edge
Size	H2780mm x W1100mm
Jamb	50mm x 150mm
Threshold	Yes <input checked="" type="checkbox"/> No <input type="checkbox"/>
Mounting	TAB <input checked="" type="checkbox"/> Fins <input type="checkbox"/> Thru Jamb <input type="checkbox"/> None <input type="checkbox"/>
Active	Left <input checked="" type="checkbox"/> Right <input type="checkbox"/> Fixed <input type="checkbox"/>
Open	Outswing <input type="checkbox"/> Inswing <input checked="" type="checkbox"/> Others <input type="checkbox"/>
Finish	#19 Antique Gold
Caulk	
Glass	No Glass <input type="checkbox"/> Sgl <input type="checkbox"/> IG <input type="checkbox"/> Lamin <input type="checkbox"/> Opered <input type="checkbox"/> Fixed <input type="checkbox"/> Insulator <input type="checkbox"/> Private <input type="checkbox"/>
Lock	Custom <input checked="" type="checkbox"/> Deadbolt <input type="checkbox"/> SGL <input type="checkbox"/> DBL <input type="checkbox"/>
Roller catch	Yes <input checked="" type="checkbox"/> No <input type="checkbox"/>
Screen	Yes <input type="checkbox"/> No <input checked="" type="checkbox"/>
Handle	Yes <input checked="" type="checkbox"/> No <input type="checkbox"/>
Thermal break	Yes <input type="checkbox"/> No <input checked="" type="checkbox"/>
Foam	Yes <input checked="" type="checkbox"/> No <input type="checkbox"/>
Packing	Foam wrapped <input type="checkbox"/> Wood box <input checked="" type="checkbox"/> Others <input type="checkbox"/>
Shipping	LCL <input type="checkbox"/> FCL <input checked="" type="checkbox"/> Others <input type="checkbox"/>
Date:	2023.03.21 L.

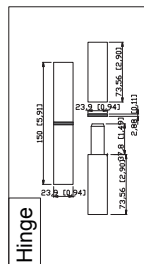
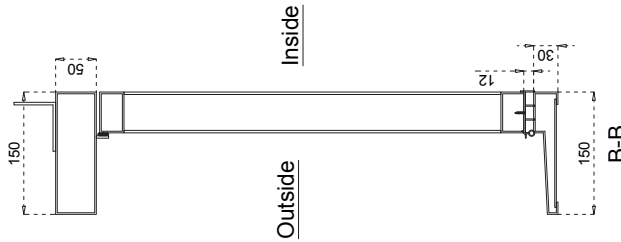
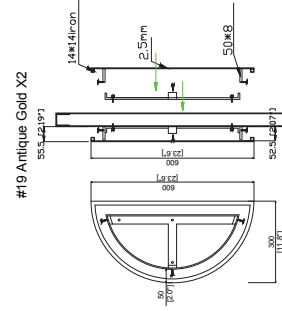


K.G.W451.001

OUTSIDE VIEW



#19 Antique Gold X2



Hinge





IRON PIVOT ENTRY DOOR  
INSTALLATION GUIDE

**03 7068 7667**  
[admin@zenbg.com.au](mailto:admin@zenbg.com.au)  
[zendoors.com.au](http://zendoors.com.au)



# ZEN IRON PIVOT DOOR / INSTALLATION

## 1. PIVOT DOORS - INSTALLING THE JAMB

First, install the iron door jamb to your opening timber frame, steel frame or masonry wall structure.

**NOTE:** Any Iron Entry Doors that are installed not in accordance with these guidelines shall void the warranty, for example any doors secured to an aluminium frame or timber window or door frame, as these are not structural and will not provide enough support for the iron door.

Also Iron Doors **must be installed setback a minimum 1-1.5 metres under roof cover/porch** to be protected from direct exposure to rain and prolonged direct sunlight. Failure to follow these requirements will **void** any warranty claims.

*The pivot doors will always arrive packed separately to the door jamb. Total weight is (85kg per square metre) we recommend 4-5 people to lift the frame into place and then hang the door. Other devices such as pallet jacks, lifts and dolly's can be used as long as adequate support and protection is applied at the lifting points. We recommend all people handling the doors wear gloves to avoid marking the doors and causing any scratches.*

**NOTE:** Pivot Doors without a sill/threshold have a lower support steel bar installed for shipment, this needs to be unscrewed prior to installation.

We have two mounting methods for the iron door jamb and your door will either have the mounting tabs on the outside of the jamb or pre drilled holes on the inside of the jamb.

**NOTE:** These are detailed on the shop drawing and should be positioned carefully during the design phase.

There are usually 4 mounting tabs/holes (and sometimes 6 or more depending on the size of the door). The tabs are bolted into the structural framing from the inside of the house and the holes are bolted from inside of the jamb using the timber screws or masonry bolts. You should use two screws/bolts per tab and one screw/bolt per mounting hole.

**IMPORTANT** – Initially, only fasten the left and right top most tabs/holes to the house framing. This is necessary to allow for some adjustment of the frame later.

## SIDELIGHTS AND/OR TRANSOM

If you have separate sidelights you will use joining bolts to fix them to the door jamb first. Apply all weather caulking between the sidelights and the jamb before joining. Once joined together, the whole unit is bolted to the house framing as per above instructions.

If you have a separate transom, it is mounted above the door jamb and fastened into the framework just like the door. Install the door jamb first and then the transom. Apply caulking to the bottom of the transom before joining to the door jamb.

Looking from inside, check that the door jamb is square. If it's not, then the jamb is slightly out. You must move the bottom of the jamb to the left or right until the door lines up exactly.

## 2. HINGE DOORS – PREPARING FLOOR PIVOT HARDWARE

Prior to hanging the door panel, make sure the floor/sill mounted pivot hardware is installed. If there is a sill the holes have already been pre drilled and you just need to fit the floor pin to the sill. If there is no sill, you will need to bolt the floor pin to the finished floor. Based on your flooring height and shop drawing approval you should have the required clearance for the door panel to be hung. The pivot floor pin must be installed on top of the finished floor with adequate space on either side and not on the edge of a slab. You will need to line up the floor pin with the top hinge which is already rebated into the head jamb. This will need to be done with a laser. We recommend a qualified door carpenter undertake these types of installs.

## 3. PIVOT DOORS – HANGING THE DOORS

Lift the door into position, the top pins is spring loaded so will retract, once the door is in position over the bottom pin, the top pin can be released into the hole on top of the door panel. As the doors are quite heavy, (85kg per sqm) we recommend 3-4 people per door and please wear gloves if possible.

## 4. PIVOT DOORS – ADJUSTMENT

Even though you have checked your framing is plumb, there may be some small adjustment needed to ensure your door is installed correctly.

The pivot hardware can be adjusted with the L tool provided in the box.

Next check that your door closes evenly from top to bottom. If, when you close your door, the top or the bottom touches the astragal first then the jamb is slightly twisted.

You can adjust this by moving the appropriate tab inwards (towards the inside of the house) or outwards (towards the outside of the house) until the door closes evenly top and bottom.

Once everything is adjusted correctly then secure the lower tabs in place with the lag bolts.

**IMPORTANT** – Check the fit of the door once again to make sure nothing moved while you were tightening the bolts.

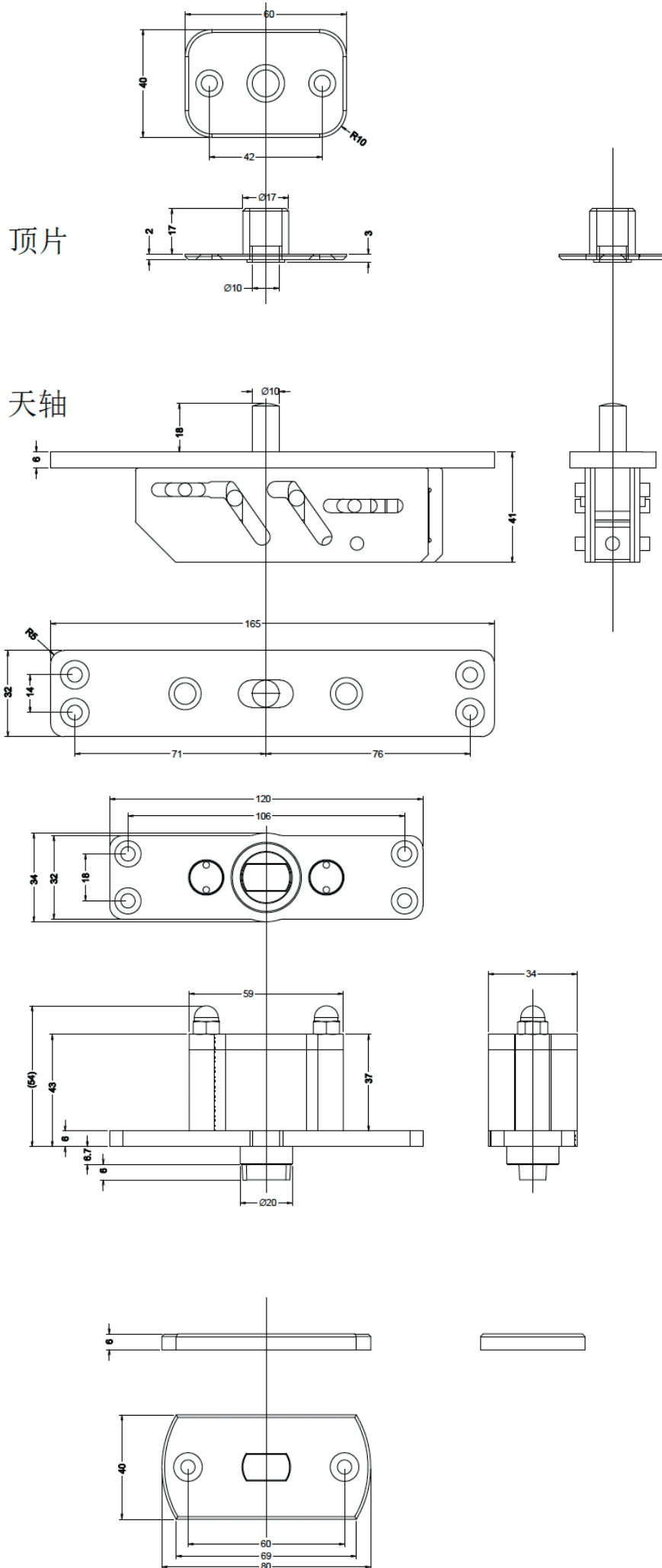
## 5. HARDWARE INSTALLATION

The handles fixings have all been pre drilled and tested on the door, the back plate needs to be fitted to the door first, then the handles screwed to the back plate. If the holes are not aligning please swap the inside handle with the outside and check again, if the round handle please rotate the handle until the holes match up.

**NOTE:** You will need to cut the supplied rubber drop seal 90mm where the pivot floor pin is located so the door panel can rotate without binding. Try to keep the cut neat and tidy and no more than the length of the pivot floor plate.

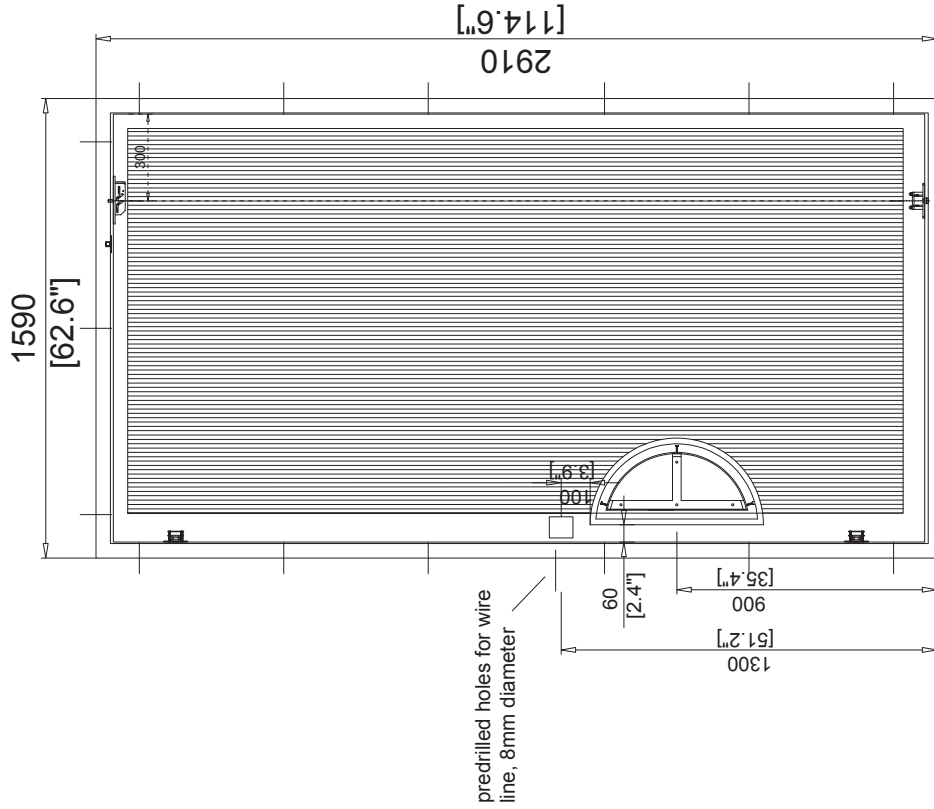
**NOTE:** Your door and frame have been pre hung and tested in the factory, if you have anything misaligned such as deadbolt, latch or other you need to adjust your frame, adjust the roller catches. You should have no issue with the alignment of the lock or latch.

# ZEN IRON PIVOT DOOR / 500KG RATED HARDWARE



# ZEN IRON PIVOT DOOR / CAD DRAWING

## OUTSIDE VIEW



### Electric Strike

ID:	INV1052 - 1 set	Finish:	#1 Black	Active:	Right Hand	INSIDE	PU Foam:	Yes	Note:
Qty:	1 Set		None	Open:	Inswing		Packing:	Foam wrapped	
Design:	Zen Batten	Glass:	No glass	Screen:	No		Shipping:	LCL	
Size:	2910x1590			Thermal break:	No	Date:			2023.04.27 K.

<b>Installation</b>	
Jamb:	50x150
Mounting:	Bolt thru Jamb
Head:	
<b>A</b>	
Side Jamb:	
<b>B</b>	
Threshold:	Yes
<b>C</b>	
Customer Approval	



STEEL HINGE DOOR  
INSTALLATION GUIDE

**03 7068 7667**  
[admin@zenbg.com.au](mailto:admin@zenbg.com.au)  
[zendoors.com.au](http://zendoors.com.au)

# ZEN STEEL HINGE DOOR/DOUBLE DOORS / INSTALLATION

## 1. HINGE DOORS - INSTALLING THE JAMB

First, install the iron door jamb to your opening timber frame, steel frame or masonry wall structure.

*The hinge doors will always arrive packed separately to the door jamb. Total weight is (35kg per square metre for single glazed, 65kg per square metre double glazed) we recommend at least 2 people to lift the frame into place and then hang the door/s. Other devices such as pallet jacks, lifts and dolly's can be used as long as adequate support and protection is applied at the lifting points. We recommend all people handling the doors wear gloves to avoid marking the doors and causing any scratches.*

**NOTE:** Hinge Doors without a sill/threshold have a lower support steel bar installed for shipment, this needs to be unscrewed prior to installation.

We have two mounting methods for the iron door jamb and your door will either have the mounting tabs on the outside of the jamb or pre drilled holes on the inside of the jamb.

**NOTE:** These are detailed on the shop drawing and should be positioned carefully during the design phase.

There are usually 4 mounting tabs/holes (and sometimes 6 or more depending on the size of the door). The tabs are bolted into the structural framing from the inside of the house and the holes are bolted from inside of the jamb using timber screws (not supplied). You should use two screws/bolts per tab and one screw/bolt per mounting hole. Holes are usually 13mm on the inside edge and 8mm on the outside edge. We will supply 13mm plastic hole covers. **Your installer will need to supply the correct fixings based on your substrate.**

**IMPORTANT** – Initially, only fasten the left and right top most tabs/holes to the house framing. This is necessary to allow for some adjustment of the frame later.

**NOTE:** The steel door jamb and door panel need to be installed so they line up and function correctly in unison. We have pre hung and tested all doors prior to shipment so we know they work, the handles line up, latches and locks line up and door panels are not rubbing or hitting the jamb. It is your installers responsibility to get this right, they need to work with the jamb and door, not the opening. Sometimes you may need to pack out one side of the jamb out of plumb based on the steel frame, which can be rigid. The jambs and doors are all custom welded by hand, not by machine so they will not be one hundred percent plumb, this needs to be factored into the installation process, which differs from a timber door and jamb.

## SIDELIGHTS AND/OR TRANSOM

If you have separate sidelights you will use joining bolts to fix them to the door jamb first. Apply all weather caulking between the sidelights and the jamb before joining. Once joined together, the whole unit is bolted to the house framing as per above instructions.

If you have a separate transom, it is mounted above the door jamb and fastened into the framework just like the door. Install the door jamb first and then the transom. Apply caulking to the bottom of the transom before joining to the door jamb.

With the door closed and looking from inside, check that the door is square. If it's not, then the jamb is slightly out. You must move the bottom of the jamb to the left or right until the door lines up exactly.

## 2. HINGE DOORS – PREPARING HINGES

Prior to hanging the hinge door panels, make sure the hinge bearings are installed. The hinge bearing is a brass washer that must be in place on each hinge pin before the door is hung.

The two or three heavy hinges should receive a very light application of oil or grease on both sides before the doors are hung.

**DO NOT** get grease onto the painted surfaces as this can cause damage.

## 3. HINGE DOORS – HANGING THE DOORS

Lift each door onto its hinge pins. As the doors are quite heavy, (35kg per sqm single glazed & 65kg per sqm double glazed) we recommend at least 2 people per door and please wear gloves if possible.

If you have a double door, after the doors are hung, use the flush bolts on the edge of the inactive door to hold it closed.

## 4. HINGE DOORS – ADJUSTMENT

Even though you have checked your framing is plumb, there may be some small adjustment needed to ensure your doors are installed correctly.

For double doors if the top of the doors are not square the bottom of the door frame must be adjusted to the left or right slightly. The door tops and bottoms will line up perfectly in the centre when the frame is square.

Next check that your door closes evenly from top to bottom. If, when you close your door, the top or the bottom touches the astragal first then the jamb is slightly twisted.

You can adjust this by moving the appropriate tab inwards (towards the inside of the house) or outwards (towards the outside of the house) until the doors close evenly top and bottom at the same time.

Once everything is adjusted correctly then secure the lower tabs in place with the lag bolts.

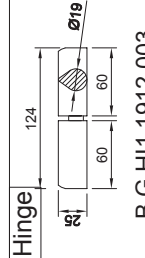
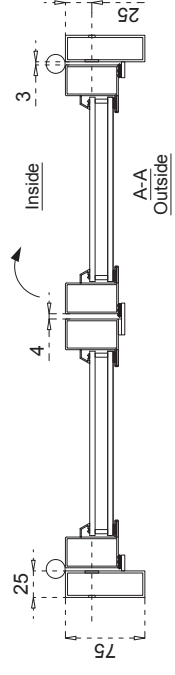
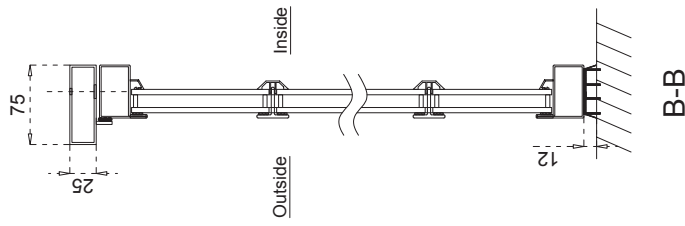
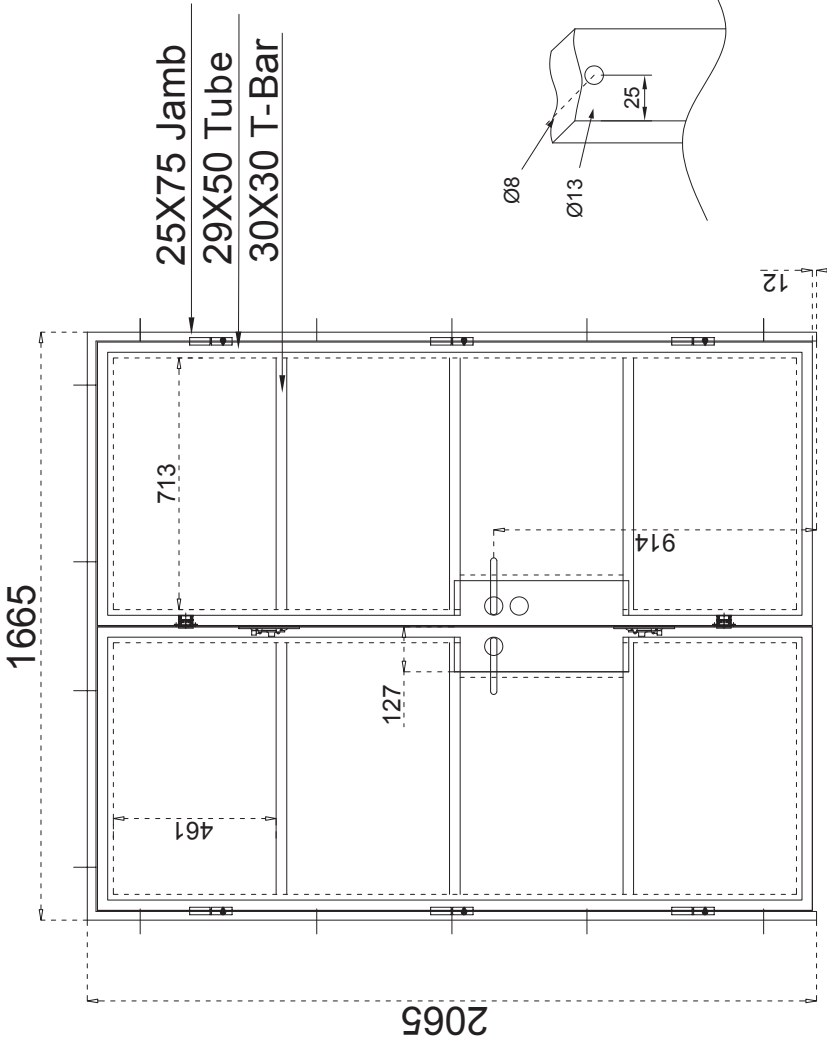
**IMPORTANT** – Check the fit of the doors once again to make sure nothing moved while you were tightening the bolts.

**NOTE:** Your door and frame have been pre hung and tested in the factory, if you have anything misaligned such as deadbolt, latch or other you need to adjust your frame, adjust the roller catches. You should have no issue with the alignment of the lock or latch. If there is an issue and you have tried all of the above, please send photos with measurements to admin@zenbg.com.au

# ZEN STEEL HINGE DOUBLE DOORS / CAD DRAWING



## OUTSIDE VIEW



<b>Installation</b>	
Jamb:	25mmx75mm
Mounting:	Bolt thru Jamb
Head:	
A	
Side Jamb:	
B	
Threshold:	No
C	
Customer Approval	

B.G.L01.7322.001	U11/S2/BK	handle + cover - 295mm x body + keys	Black
B.G.L01.7322.002	C317322/BK	handle + cover	Black

B.G.L01.7322.001  
B.G.L01.7322.002

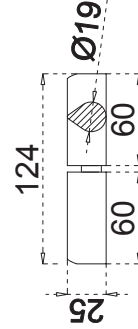
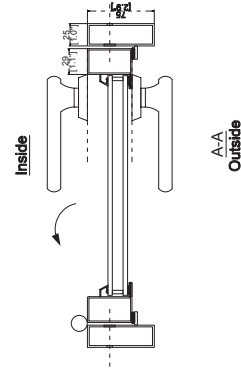
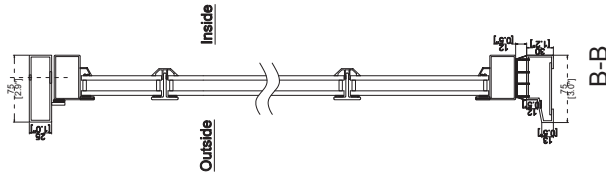
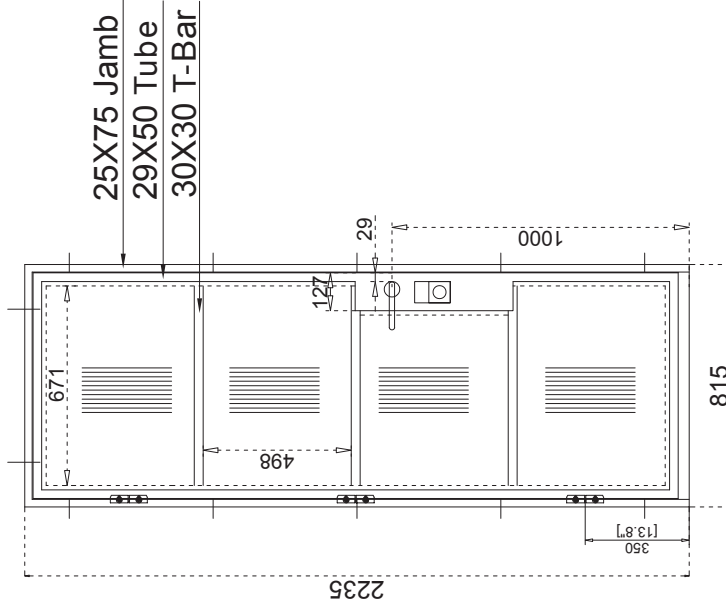
ID:	INV1110-W06 (Entry Doors)	Finish:	#1 Black	Active:	Open:	Right Hand	PU Foam:	Yes
Qty:	1 Set	Glass:	#0 Clear	Open:	Screen:	Inswing	Packing:	Wood box
Design:	Custom	Glass:	Dual pane	Screen:	Thermal break:	No	Shipping:	FCL
Size:	1665mmx2065mm	Glass:	Fixed	Thermal break:		No	Date:	2023-05-31 WZW(W451)

# ZEN STEEL HINGE DOOR / CAD DRAWING

B.G.L01.7322.003	C917322/BK	Handle + latch	Black
------------------	------------	----------------	-------

B.G.L01.7322.003

## OUTSIDE VIEW



B.G.HI1.1912.003



K.G.W451.001

## Installation

Jamb: 25mmx75mm  
Mounting: counter sunk 8/13  
Head:

A  
Side Jamb:

B  
Threshold:

C  
Customer Approval

ID:	INV1078 1 set	Finish:	#1 Black	Active:	Left Hand	PU Foam:	Yes	Note:
Qty:	1 Set		#7 Reeded +#0 Clear	Open:	In-swing	Packing:	Foam wrapped	
Design:	Custom	Glass:	Dual pane	Screen:	No	Shipping:	FCL	
Size:	H2235 x W815		Fixed	Thermal break:	No	Date:	2023.4.26Susie	



STEEL PIVOT DOOR  
INSTALLATION GUIDE

**03 7068 7667**  
[admin@zenbg.com.au](mailto:admin@zenbg.com.au)  
[zendoors.com.au](http://zendoors.com.au)



# ZEN STEEL PIVOT DOOR / INSTALLATION

## 1. PIVOT DOORS - INSTALLING THE JAMB

First, install the steel door jamb to your opening timber frame, steel frame or masonry wall structure.

*The pivot doors will always arrive packed separately to the door jamb. Total weight is (35kg per square metre for single glazed, 65kg per square metre double glazed) we recommend at least 2 people to lift the frame into place and then hang the door/s. Other devices such as pallet jacks, lifts and dolly's can be used as long as adequate support and protection is applied at the lifting points. We recommend all people handling the doors wear gloves to avoid marking the doors and causing any scratches.*

**NOTE:** Pivot Doors without a sill/threshold have a lower support steel bar installed for shipment, this needs to be unscrewed prior to installation.

We have two mounting methods for the steel door jamb and your door will either have the mounting tabs on the outside of the jamb or pre drilled holes on the inside of the jamb.

**NOTE:** These are detailed on the shop drawing and should be positioned carefully during the design phase.

There are usually 4 mounting tabs/holes (and sometimes 6 or more depending on the size of the door). The tabs are bolted into the structural framing from the inside of the house and the holes are bolted from inside of the jamb using timber screws (not supplied). You should use two screws/bolts per tab and one screw/bolt per mounting hole. Holes are usually 13mm on the inside edge and 8mm on the outside edge. We will supply 13mm plastic hole covers. **Your installer will need to supply the correct fixings based on your substrate.**

**IMPORTANT** – Initially, only fasten the left and right top most tabs/holes to the house framing. This is necessary to allow for some adjustment of the frame later.

## SIDELIGHTS AND/OR TRANSOM

If you have separate sidelights you will use joining bolts to fix them to the door jamb first. Apply all weather caulking between the sidelights and the jamb before joining. Once joined together, the whole unit is bolted to the house framing as per above instructions.

If you have a separate transom, it is mounted above the door jamb and fastened into the framework just like the door. Install the door jamb first and then the transom. Apply caulking to the bottom of the transom before joining to the door jamb.

Looking from inside, check that the door jamb is square. If it's not, then the jamb is slightly out. You must move the bottom of the jamb to the left or right until the door lines up exactly.

## 2. PIVOT DOORS – PREPARING FLOOR PIVOT HARDWARE

Prior to hanging the door panel, make sure the floor/sill mounted pivot hardware is installed. If there is a sill the holes have already been pre drilled and you just need to fit the floor pin to the sill. If there is no sill, you will need to bolt the floor pin to the finished floor. Based on your flooring height and shop drawing approval you should have the required clearance for the door panel to be hung. The pivot floor pin must be installed on top of the finished

floor with adequate space on either side and not on the edge of a slab. You will need to line up the floor pin with the top hinge which is already rebated into the head jamb. This will need to be done with a laser. We recommend a qualified door carpenter undertake these types of installs.

## 3. PIVOT DOORS – HANGING THE DOORS

Lift the door into position, the top pins is spring loaded so will retract, once the door is in position over the bottom pin, the top pin can be released into the hole on top of the door panel. As the doors are quite heavy, (35kg per sqm single glazed & 65kg per sqm double glazed) we recommend at least 2 people per door and please wear gloves if possible.

## 4. PIVOT DOORS – ADJUSTMENT

Even though you have checked your framing is plumb, there may be some small adjustment needed to ensure your door is installed correctly.

The pivot hardware can be adjusted with the L tool provided in the box.

Next check that your door closes evenly from top to bottom. If, when you close your door, the top or the bottom touches the astragal first then the jamb is slightly twisted.

You can adjust this by moving the appropriate tab inwards (towards the inside of the house) or outwards (towards the outside of the house) until the door closes evenly top and bottom.

Once everything is adjusted correctly then secure the lower tabs in place with the lag bolts.

**IMPORTANT** – Check the fit of the door once again to make sure nothing moved while you were tightening the bolts.

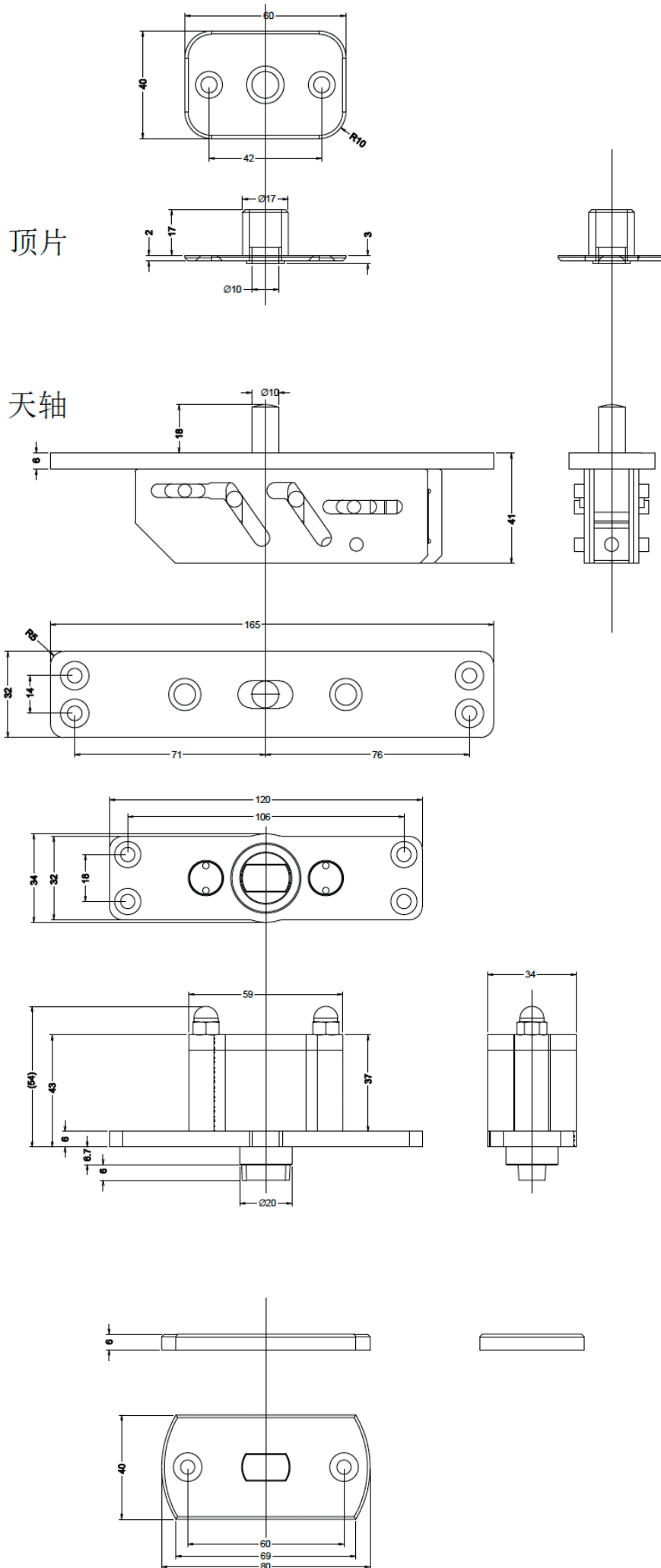
## 5. HARDWARE INSTALLATION

The handles fixings have all been pre drilled and tested on the door, the back plate needs to be fitted to the door first, then the handles screwed to the back plate. If the holes are not aligning please swap the inside handle with the outside and check again, if the round handle please rotate the handle until the holes match up.

**NOTE:** You will need to cut the supplied rubber drop seal 90mm where the pivot floor pin is located so the door panel can rotate without binding. Try to keep the cut neat and tidy and no more than the length of the pivot floor plate.

**NOTE:** Your door and frame have been pre hung and tested in the factory, if you have anything misaligned such as deadbolt, latch or other you need to adjust your frame, adjust the roller catches. You should have no issue with the alignment of the lock or latch.

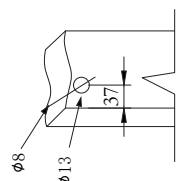
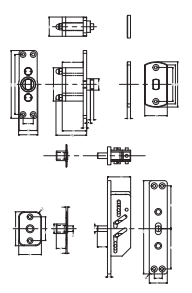
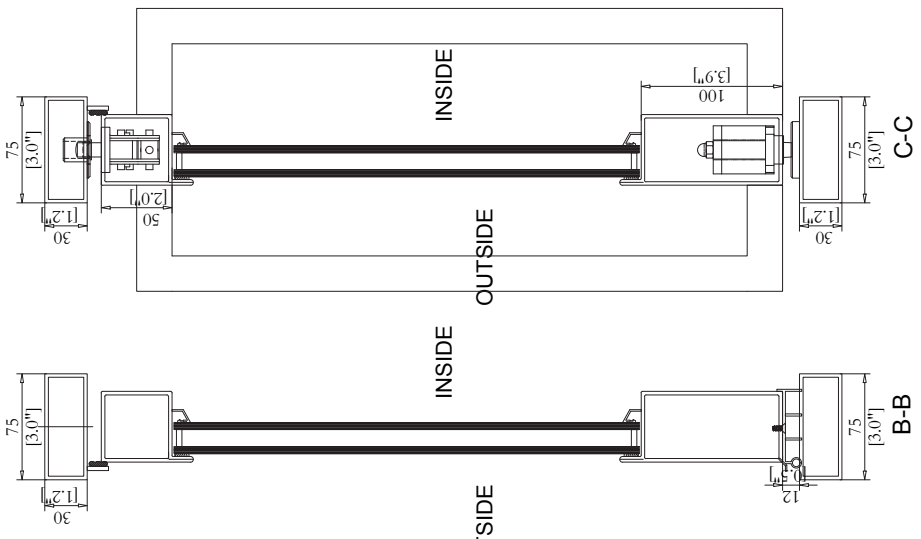
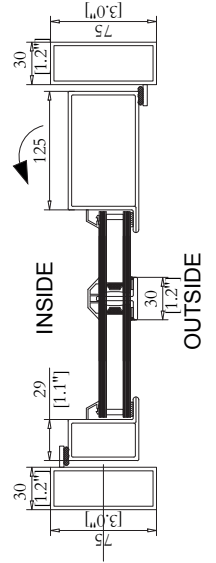
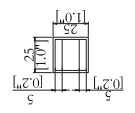
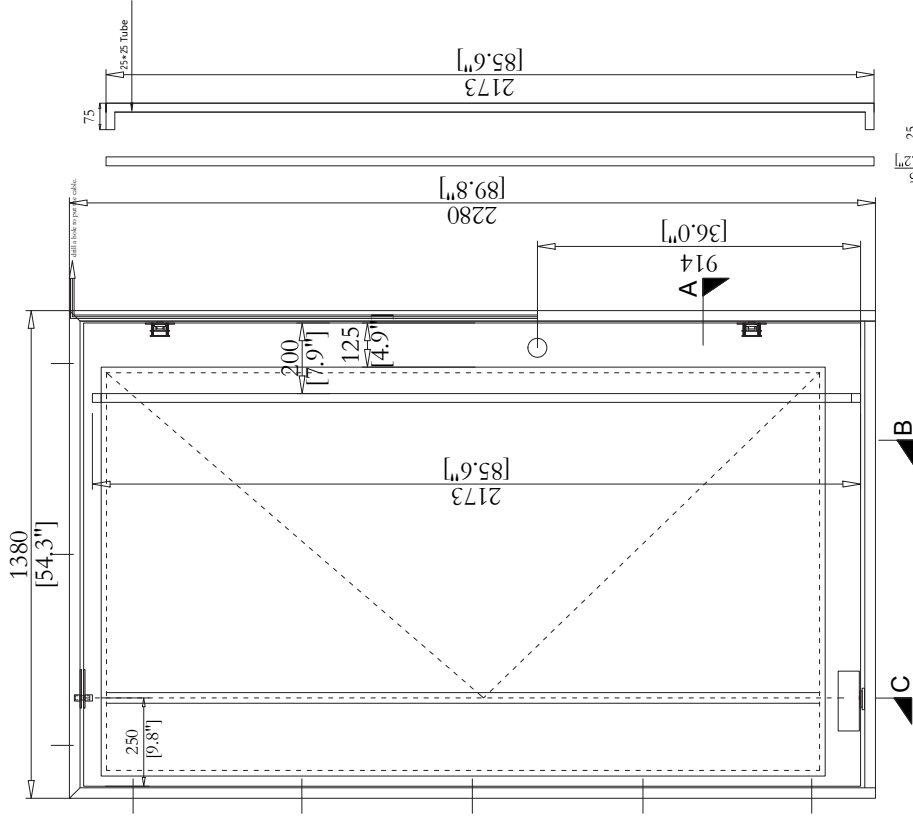
# ZEN STEEL PIVOT DOOR / 500KG RATED HARDWARE



# ZEN STEEL PIVOT DOOR / CAD DRAWING

ID	INV847 - 1 set
QTY	1 Set
Design	Custom
Size	1380 X 2280
Jamb	30MM X 75MM
Threshold	Yes <input checked="" type="checkbox"/> No <input type="checkbox"/>
Mounting	TAB <input type="checkbox"/> Fins <input type="checkbox"/> Thin Jamb <input checked="" type="checkbox"/> None <input type="checkbox"/>
Active	Left <input checked="" type="checkbox"/> Right <input type="checkbox"/>
Open	Outswing <input type="checkbox"/> Inswing <input checked="" type="checkbox"/> Others <input checked="" type="checkbox"/>
Finish	#1 Matt Black
Caulk	#1 Matt Black
Glass	#0 Clear + #0 Clear Sgl <input type="checkbox"/> IG <input checked="" type="checkbox"/> Lamin <input type="checkbox"/> Open <input type="checkbox"/> Fixed <input checked="" type="checkbox"/> In tube <input type="checkbox"/> (for fish)
Lock	Custom <input checked="" type="checkbox"/> Deadbolt <input type="checkbox"/> SGL <input type="checkbox"/> DBL <input type="checkbox"/>
Roller catch	Yes <input checked="" type="checkbox"/> No <input type="checkbox"/>
Screen	Yes <input type="checkbox"/> No <input checked="" type="checkbox"/>
Handle	Yes <input checked="" type="checkbox"/> No <input type="checkbox"/>
Thermal break	Yes <input checked="" type="checkbox"/> No <input type="checkbox"/>
Foam	Yes <input checked="" type="checkbox"/> No <input type="checkbox"/>
Packing	Foam wrapped <input type="checkbox"/> Wood box <input checked="" type="checkbox"/> Others <input type="checkbox"/>
Shipping	LCL <input type="checkbox"/> FCL <input checked="" type="checkbox"/> Others <input type="checkbox"/>
Date:	2022.09.20 W

## OUTSIDE VIEW



Hinge

- LOCKWOOD SELECTOR 3772 UNIVERSAL MORTICE LOCK - 60mm x 1
- LOCKWOOD VELOCITY OVAL CYLINDER ROUND ESCUTCHEON VSR6 - Matt Black x 1
- LOCKWOOD VELOCITY OVAL TURNKNOB VSR7 - Matt Black x 1
- LOCKWOOD 3700 SERIES TURNSNIB ADAPTOR (LATCH RETRACT) x 1
- BRAVA METRO 570 OVAL CYLINDER MATT BLACK - Matt Black x 1
- LOCKWOOD 3772 FINISH KIT (STRIKE, FACE PLATE & SCREWS) - Matt Black x 1
- LOCKWOOD PADDE ES2100 ELECTRIC STRIKE 10-30Vdc x 1