

## PARTS AND HARDWARE.



ø965\*95mm

b x 1



ø428\*285mm

b x 1



M10\*320mm

C x 1



ø10\*30mm

d x 2



M10

e x 1



ø12\*ø25\*1.0mm

f x 1



g x 1



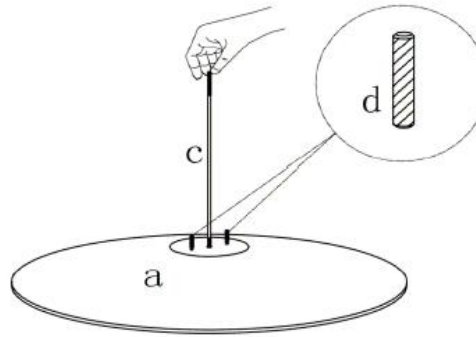
h x 4

## NOTES.

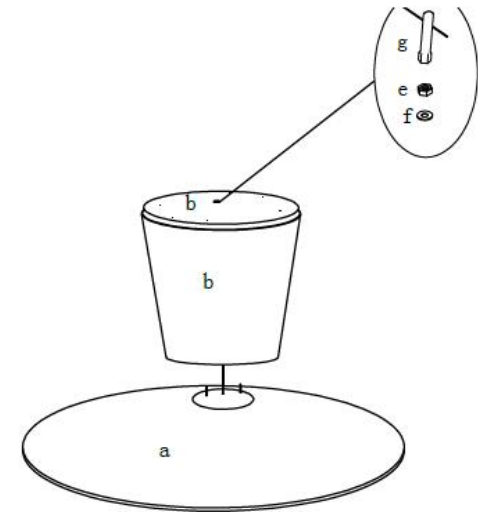
Thank you for purchasing this quality product! Be sure to check all packing material carefully for small part that may have come loose inside the carton during shipping

**CAUTION:** The item is heavy, assembly should be performed by two people.

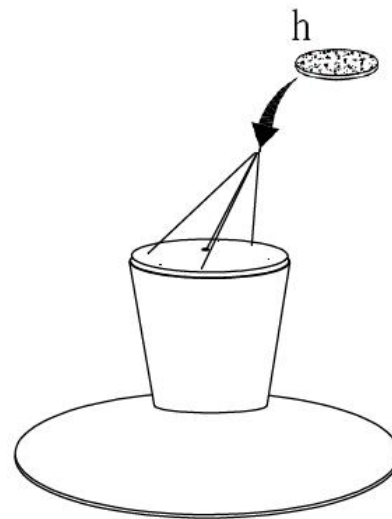
## STEP 1.



## STEP 2.



## STEP 3.



## STEP 4.

