

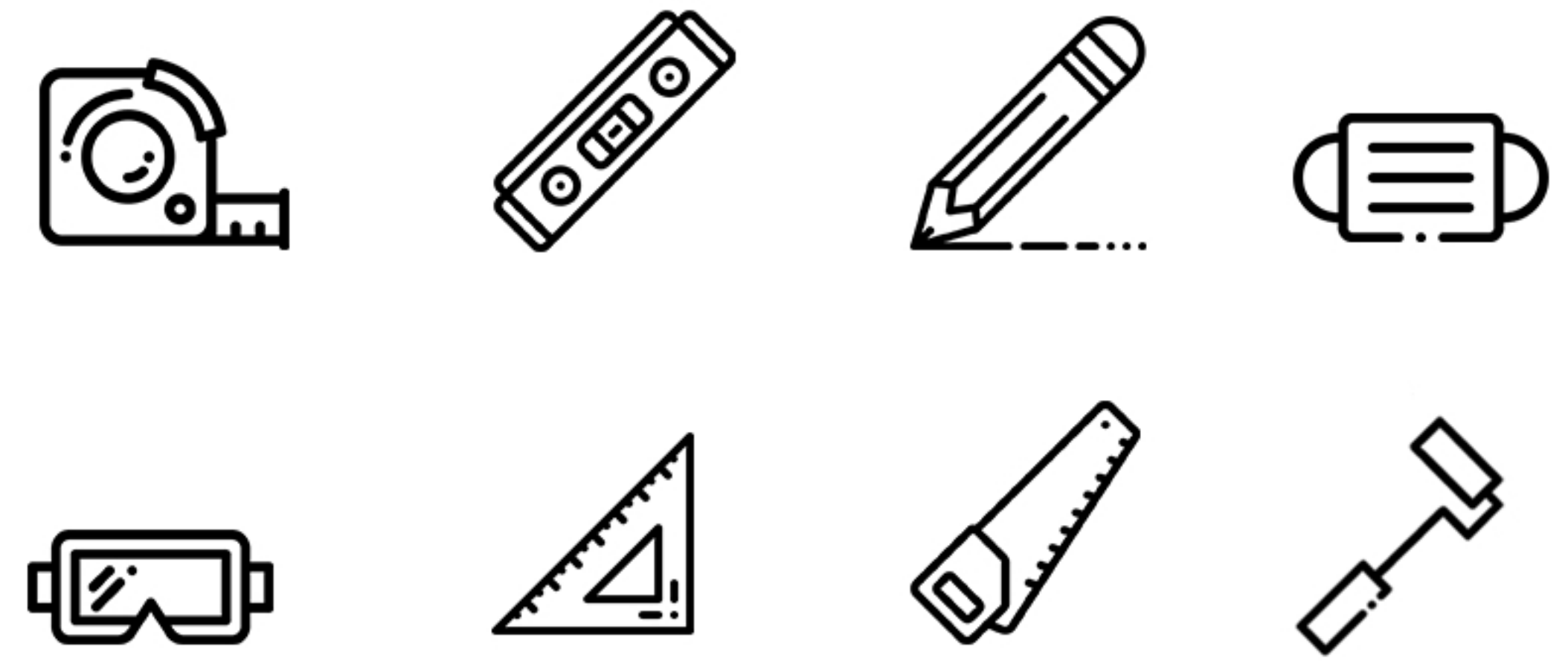
# BEYOND SHIPLAP BY NINTH & VINE

## IN DEPTH INSTALLATION INSTRUCTIONS

(see [www.ninthandvine.com/pages/tutorials](http://www.ninthandvine.com/pages/tutorials) for our full, in depth instructions/tutorials)

### MINIMUM TOOLS

- 1 TAPE MEASURE
- 2 LEVEL
- 3 PENCIL
- 4 DUST MASK
- 5 EYE PROTECTION
- 6 SPEED SQUARE
- 7 YOUR CHOICE OF CUTTING TOOL :  
SEE "CHOOSE YOUR CUTTING TOOL PG.3"
- 8 J ROLLER :  
IF INSTALLING WITH ADHESIVE TAPE



2 PERSON  
INSTALLATION  
RECOMMENDED

### BEFORE YOU BUY



#### How much should I buy?

- We recommend buying 5-10% more sq ft than the area of your wall.

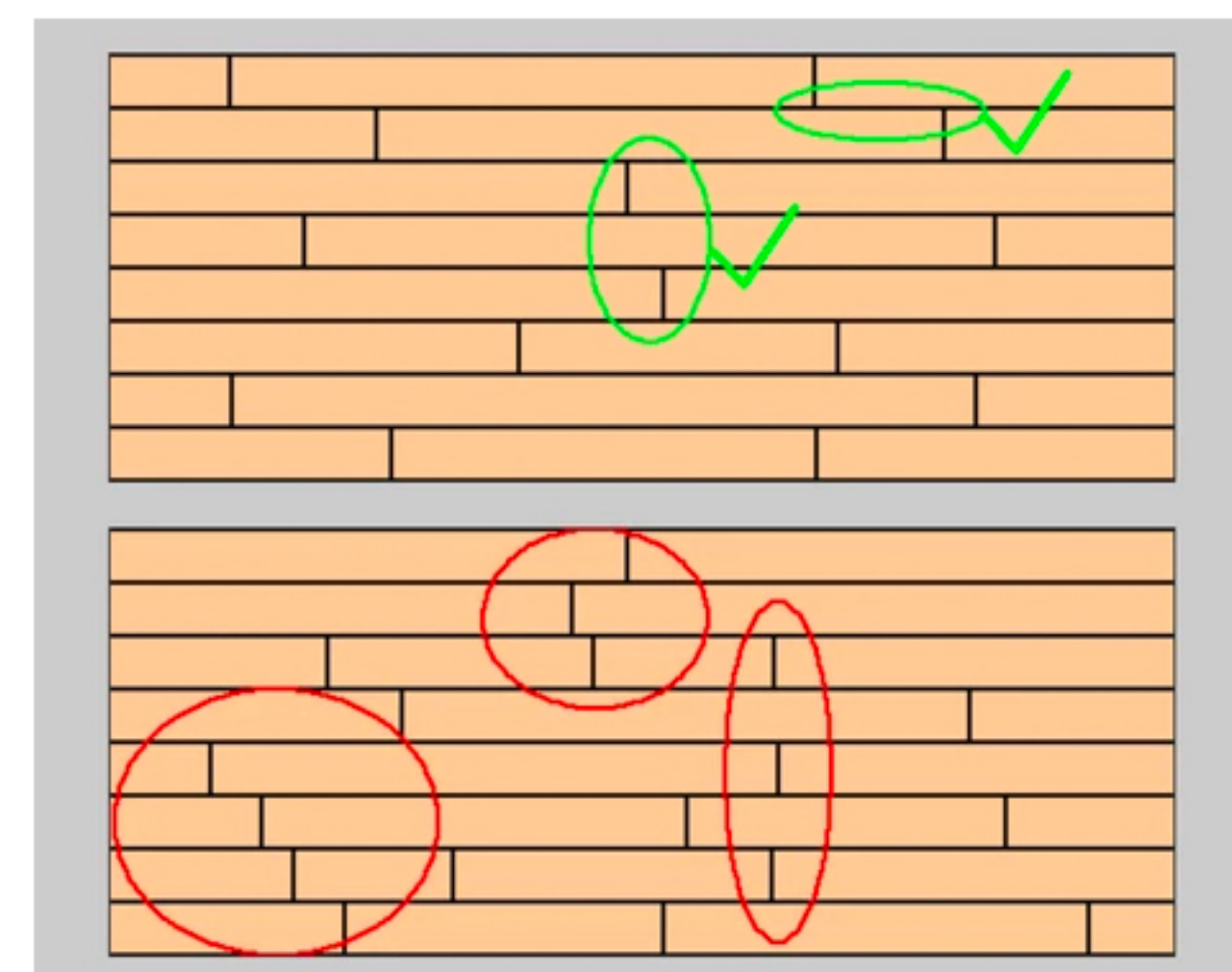
#### Measuring the area of your wall:

- Divide the Area(inches) by 144 and this gives you the sq ft required for your wall: ( Example: (H in x W in) ÷ 144 = sq ft )
- If you have any doors or windows measure the area of those and subtract



### DESIGN YOUR PLANK LAYOUT

- Lay your planks on the floor to check your design.
- Design ideas: Random staggered pattern, Repeating random staggered pattern, Herringbone, Chevron.
- Tip: The most important cuts will be the first plank in each row as this will determine your layout.
- Things to avoid:
  - Sister joints - assure adjacent joints are at least 10 inches apart
  - Stair Steps
  - H Joints



- For Concrete, be sure the rain drop design pattern is in vertical orientation as you install your panels.



# BEYOND SHIPLAP BY NINTH & VINE

## IN DEPTH INSTALLATION INSTRUCTIONS

(see [www.ninthandvine.com/pages/tutorials](http://www.ninthandvine.com/pages/tutorials) for our full, in depth instructions/tutorials)

### INSTALLING YOUR PLANKS/PANELS

#### Preparing your wall

**(Surface must be clean, completely dry, structurally sound, flat, free of significant texture.)**



- Use a scraper or putty knife to remove any large abnormalities sticking off of the wall. The adhesive tape will stick to lightly textured walls. If your wall is heavily textured you will need to sand it to remove the texture, and primer/paint prior to installation. Do not install over bare drywall or drywall mud (joint compound) as the adhesive will not stick well. If gaps are desired between the planks be sure to darken your wall prior to installation. Light painted walls will show through the gaps and cause an unwanted appearance.
- Thoroughly wash and completely dry your wall. This step is crucial if you are using adhesive tape.

### MAKING CUTS ON SHIPLAP PLANKS

**Tip: Measure twice, cut once.**

**Tip: Use a fine toothed blade or saw for a cleaner cut.**

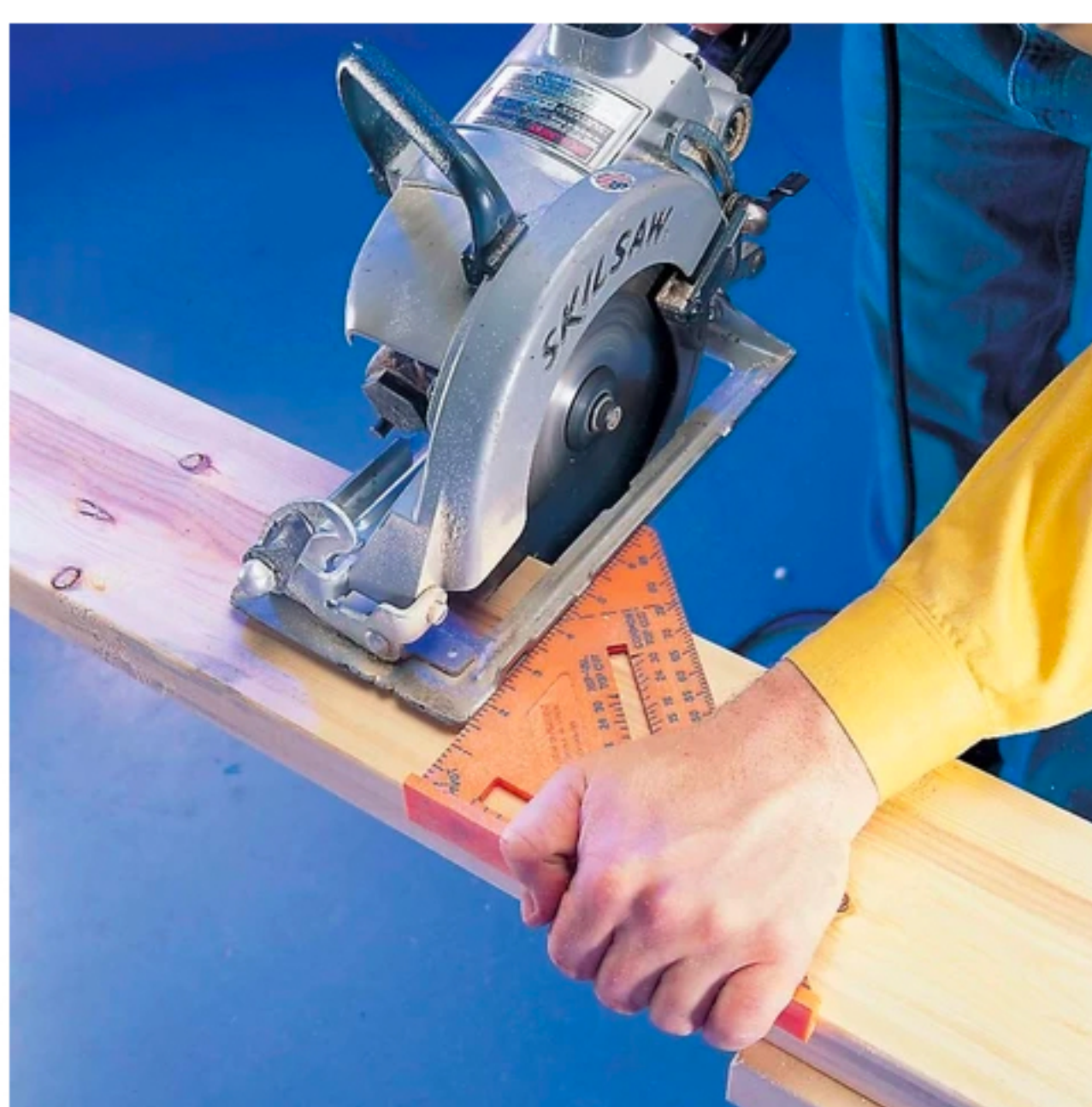
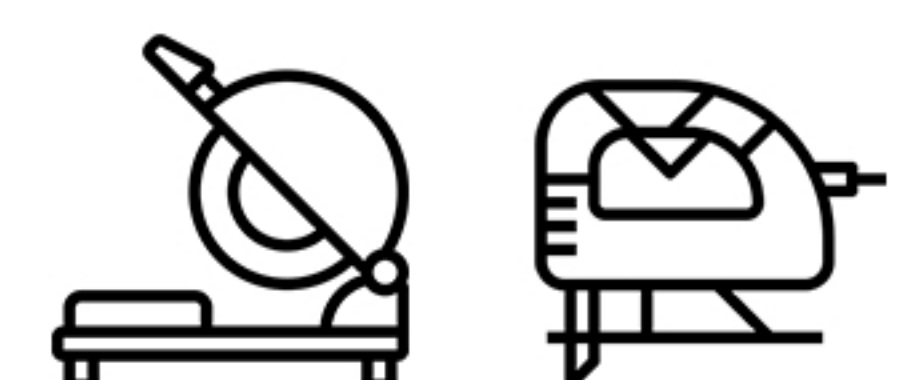
- Use a measuring tape & speed square to mark your cut.



#### Choose your cutting tool:

- Miter saw
  - Circular saw
  - Jig saw
  - Hand saw and Miter box or speed square
- Use a speed square as a cutting guide.
- Use a speed square as a cutting guide.
- Be sure to get a Miter box that will fit a 5.75" wide plank.
- Or use a speed square as a cutting guide.

CUTTING TOOL  
OPTIONS:





# BEYOND SHIPLAP BY NINTH & VINE

## IN DEPTH INSTALLATION INSTRUCTIONS

(see [www.ninthandvine.com/pages/tutorials](http://www.ninthandvine.com/pages/tutorials) for our full, in depth instructions/tutorials)

### MAKING CUTS (CONTINUED)

#### Making Cuts to Brick & Concrete Panels

- Use a pencil to mark your plank on both ends where it needs to be cut.
- Connect your marks using a straight edge or the edge of your level.
- Use a table saw, circular saw or jigsaw to cut along your marked line.

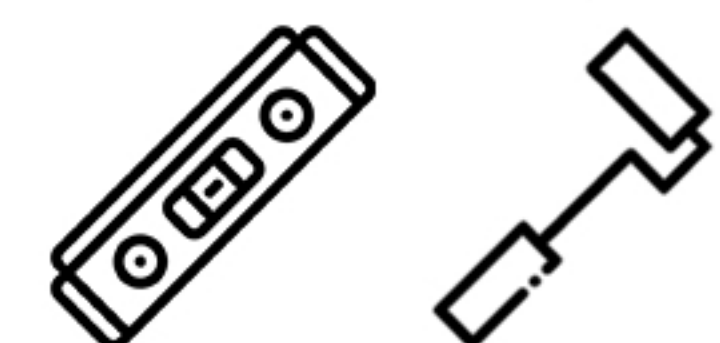
#### Cutting planks lengthwise

- Test fit your plank where it will be installed.
- Use a pencil to mark your plank on both ends where it needs to be cut.
- Connect your marks using a straight edge or the edge of your level.
- Use a table saw, circular saw or jigsaw to cut along your marked line.

### FLEXIBLE INSTALLATION OPTIONS FOR SHIPLAP PLANKS

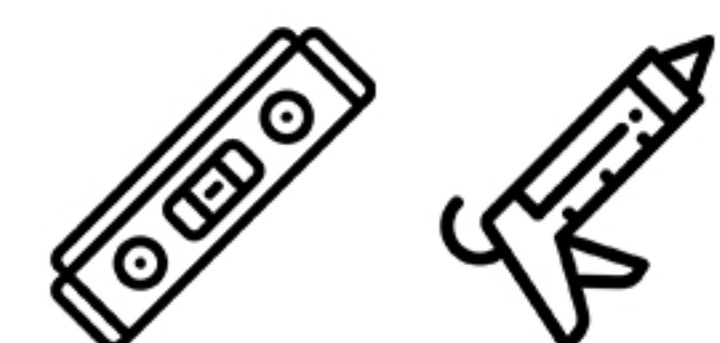
- Use a level to assure that the base where your first row will start is level.
- Be sure to check with a level every few rows and make slight adjustments as needed.

#### Peel-and-stick adhesive tape (recommended for most applications except brick)



- The adhesive tape is very strong. Before you remove the protective backing for final installation, be sure to test fit each plank as you go to assure proper fit.
- After test fitting, remove the tape backing and apply to the wall.  
Tip: put the piece at an angle with only the bottom edge touching the wall before fully applying it to the wall. This will assure good positioning prior to the adhesive sticking to the wall.
- Use a J roller every few rows to activate the pressure sensitive adhesive tape. This step is very important to assure proper adherence.  
If you wish to have gaps between your planks you can use popsicle sticks (recommended), nickels, or tile spacers between each row of planks.

#### Construction adhesive



- Test fit each plank as you go to assure a proper fit.
- Apply three 1/4 inch beads lengthwise to the back of the plank, and apply it to the wall.
- For Concrete Panels apply at least four 1/4 beads lengthwise to the back of each panel, then apply it to the wall.
- Be sure to keep the adhesive at least 1 inch away from any edge on your plank.
- If you wish to have gaps between your planks you can use popsicle sticks (recommended), nickels, or tile spacers between each row of planks.
- Gaps are not recommended for Concrete Panels.



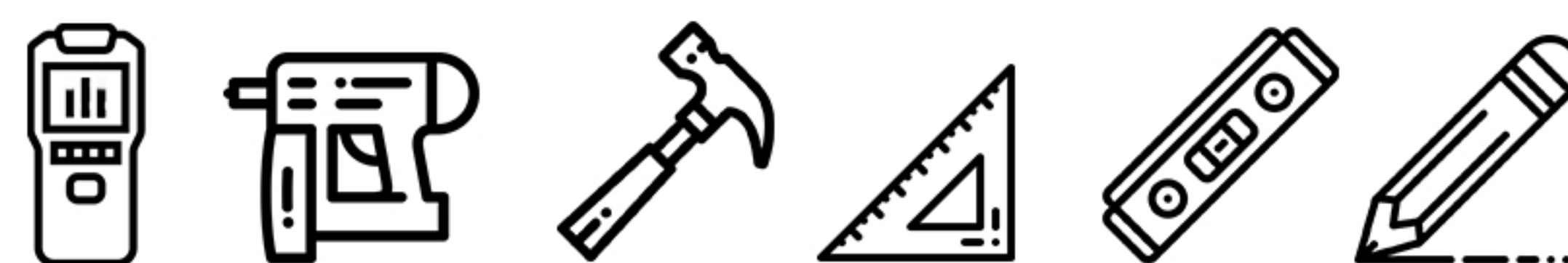
# BEYOND SHIPLAP BY NINTH & VINE

## IN DEPTH INSTALLATION INSTRUCTIONS

(see [www.ninthandvine.com/pages/tutorials](http://www.ninthandvine.com/pages/tutorials) for our full, in depth instructions/tutorials)

### FLEXIBLE INSTALLATION OPTIONS (CONTINUED)

#### Nail gun or Finishing nails



- Mark the top and bottom of each stud in your wall with a stud finder.
- Connect the marks with a pencil and the edge of your level (or a chalk line).
- Use a finish nailer, or finish nails/hammer/punch to apply at least 4 nails per 4 ft of board into the marked stud lines.
- If you are unable to nail into a stud be sure to nail into the drywall at a downward angle to assure a secure fit.
- If you wish to have gaps between your planks you can use popsicle sticks (recommended), nickels, or tile spacers between each row of planks.
- To fill in the nail holes we recommend using lightweight spackling, painters putty, or caulk. Touch up with matched paint (from your local paint store) or furniture marker.



#### Brick Wall Panel Installation

- Recommended: Finish/Brad Nail Gun & Liquid Nails
- Start at the bottom left corner of your wall.
- Be sure the first and subsequent pieces are placed in the proper direction.
- For brick, be sure the overlapping finger joints are facing left, and the underlying finger joints (with surrounding mortar) are facing right.
- Test fit each piece as you go.
- On the back of each panel apply nickel sized dollops of Liquid Nails to each brick finger to help keep the edges down nicely.
- Apply the panel to the wall.
- Use a finish nailer with 18 gauge nails that are at least 1.5" in length to place at least one nail in each finger joint, as well as a few on the top and bottom edges of the panel.
- Continue the above process for all of your panels until your wall is complete. Once you finish your wall use white caulk to fill in the nail holes, and hide any unsightly joints.

#### Installing around electrical outlets and light switches

- Turn off the electrical breaker.
- Remove the outlet cover.  
Dry fit your plank and use a pencil to mark where the outlet box will be. This will need to be a tight fit because the metal tabs on the outlet will need to fit over the plank.
- This assures that your outlet will sit flush with the outlet cover.  
Cut the plank where you placed your mark, using a jig saw or keyhole saw.



# BEYOND SHIPLAP BY NINTH & VINE

## IN DEPTH INSTALLATION INSTRUCTIONS

---

(see [www.ninthandvine.com/pages/tutorials](http://www.ninthandvine.com/pages/tutorials) for our full, in depth instructions/tutorials)

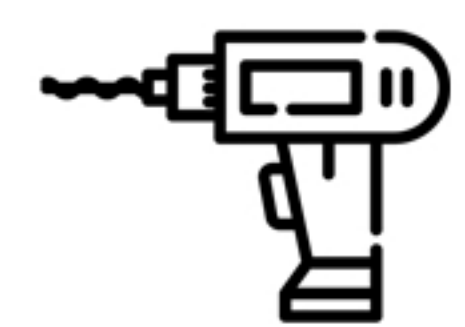
### FLEXIBLE INSTALLATION OPTIONS (CONTINUED)

---

#### Finishing edges and corners

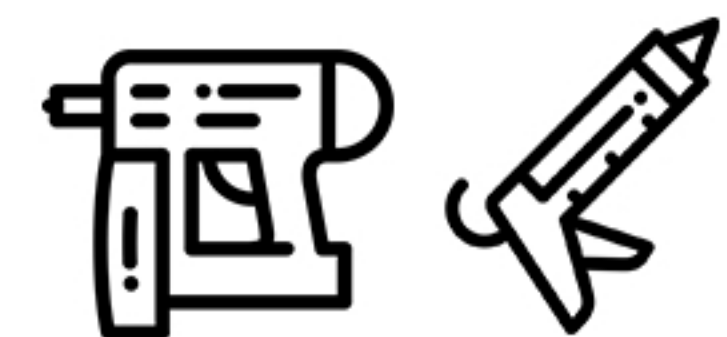
(Paint or stain trim pieces as desired to match or compliment your planks/panels)

- Edges: We recommend using wood or metal square edge trim when needed to finish edges.
- Inside and outside corners: Corners can be finished with square edge trim, corner trim.



#### Hanging objects on your wall

- We recommend using a drill and wall anchors to support any objects you will be hanging on the wall.



#### Ceiling installation

- For ceiling installation we recommend using construction adhesive in conjunction with finish nails, nailed into ceiling joists.
- Be sure to check local building codes prior to installing on ceiling and adhere to any code restrictions.

### CARE & MAINTENANCE

---

- Dust or vacuum with a non abrasive vacuum attachment.
- If water gets on the wood dry it immediately with a cloth.
- For minor paint scratches use a matched paint or furniture pen for touch up.

### ADVISEMENTS

---

- Warning: Wood dust is known to the State of California as a Carcinogen. Wear protective equipment while cutting and installing wood products.
- Warning: Wood is flammable.  
Do not install this product near open flame or heat source such as a fireplace or furnace.
- This product is not to be installed as a floor.
- This product is not intended for installation in very damp or wet areas.
- This product is made of recycled wood and thereby susceptible to changes in temperature and humidity.
- This product is for interior use only.
- This product may be used for ceiling applications as long as you adhere to local building codes for installation procedures and restrictions.