



# -INSTALLATION- INSTRUCTIONS

▶ LP AVENTURE STANDARD AND LARGE BUMPER GUARDS ◀

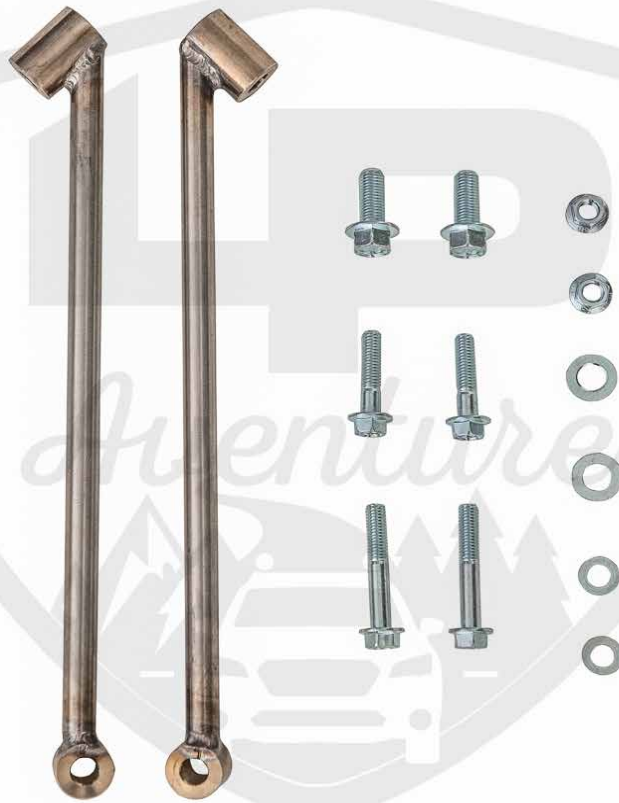
SUBARU OUTBACK 2020-2023

# CONGRATULATIONS ON YOUR NEW LP AVENTURE BUMPER GUARD!

If you have any question or need assistance during the installation, please contact our team. You can find the information on the last page.



IN THE BAG





## NECESSARY TOOLS

1. - We recommend the use of a lift
2. - Jack stand to support the bumper guard
3. - Ratchet
4. -12mm Socket
5. -14mm Socket
6. -12mm Wrench
7. -14mm Wrench
8. - Knife or a Dremel

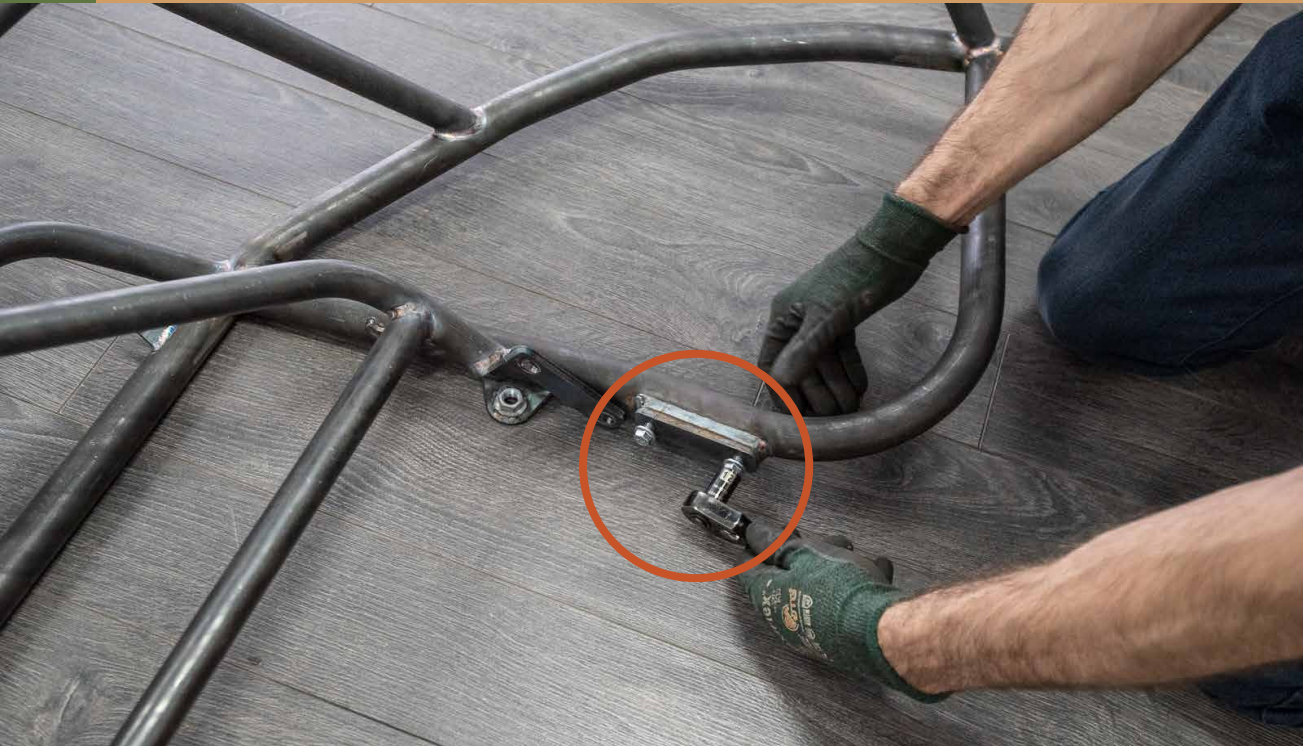
1

## ASSEMBLE BUMPER GUARD



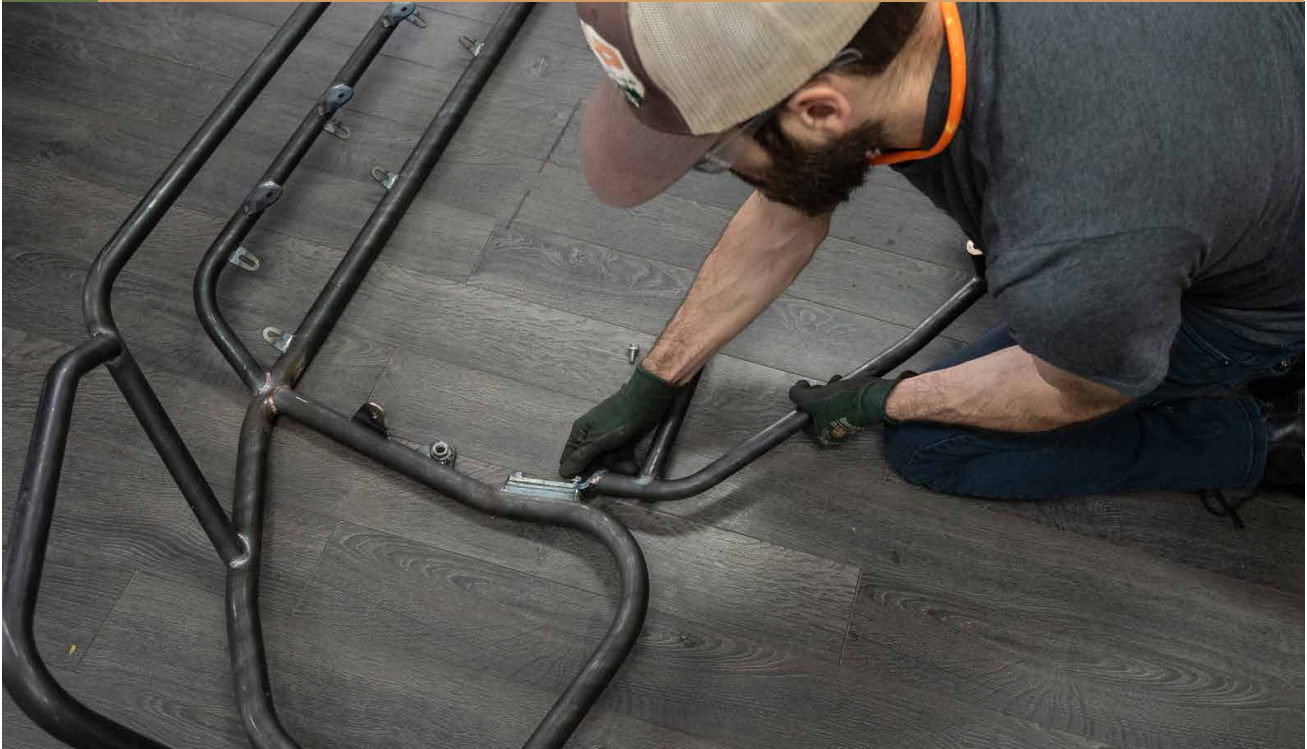
2

## REMOVE BOLTS



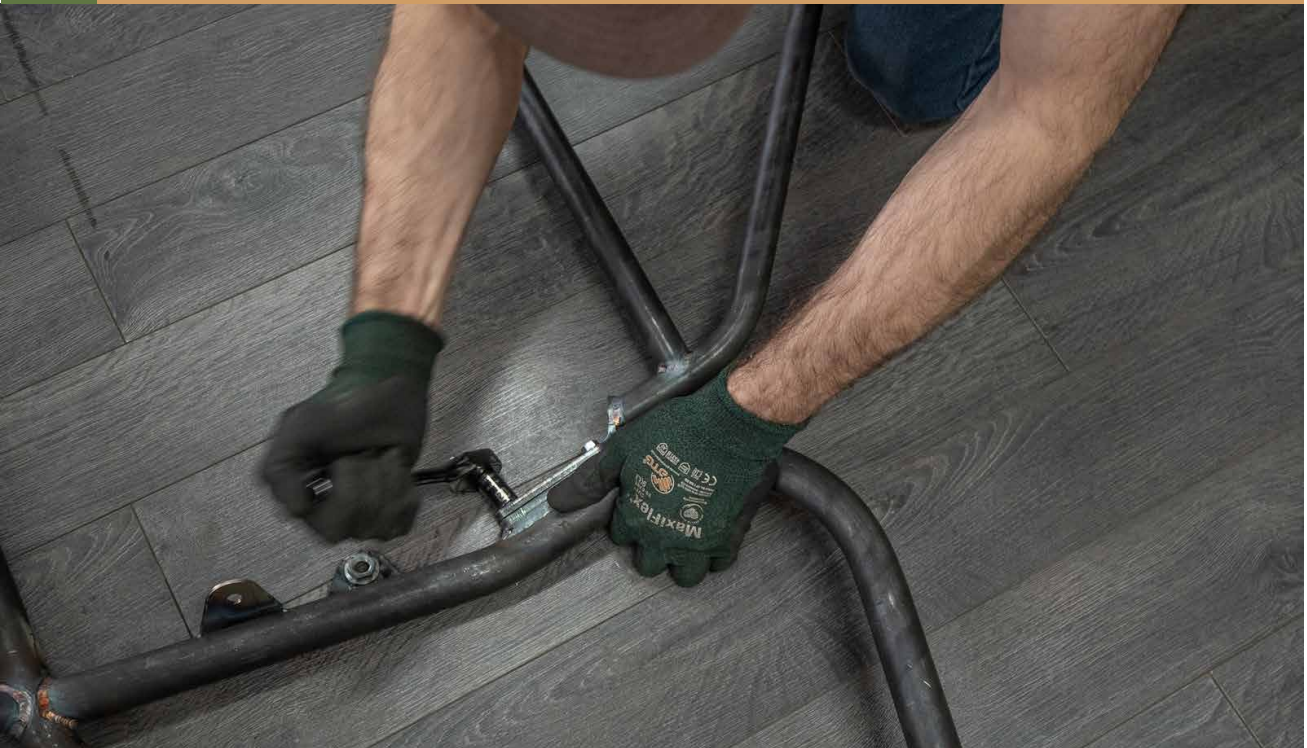
3

UNFOLD REAR SECTION OF THE BUMPER GUARD  
AND RE INSTALL BOLTS



4

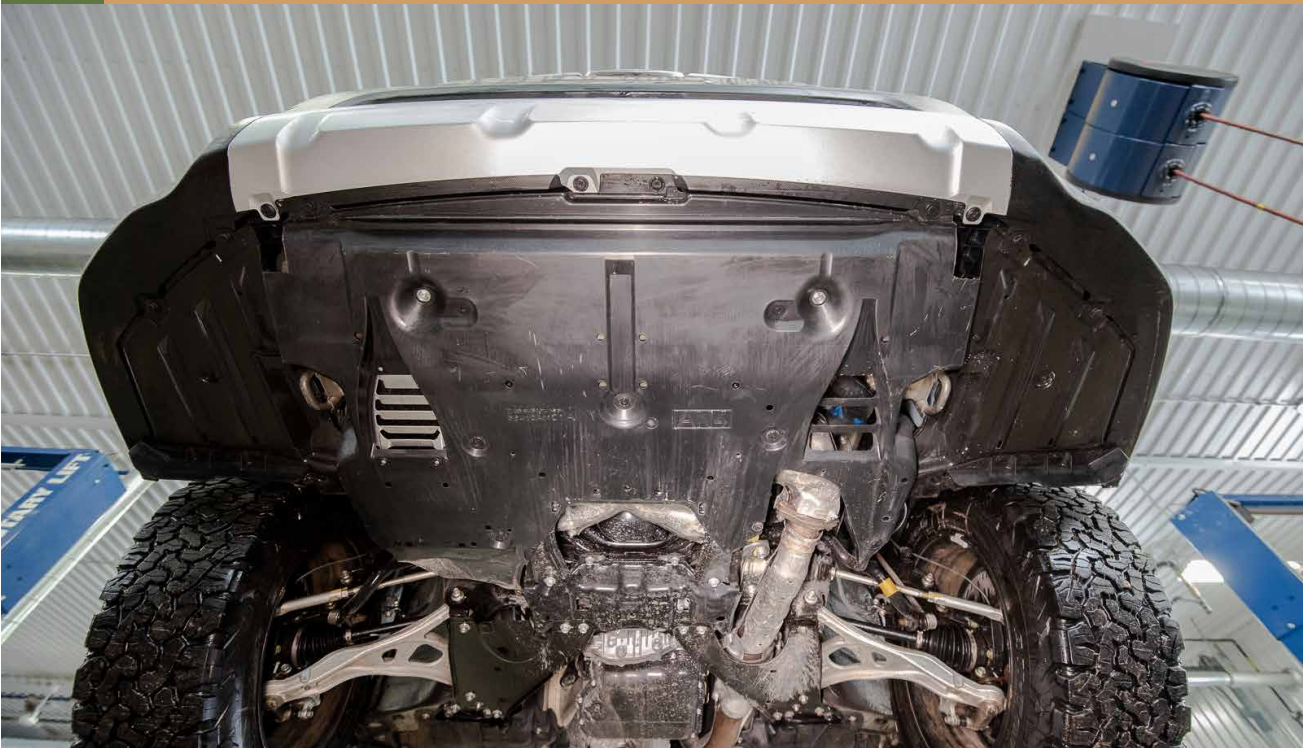
SNUG UP BOLTS BUT DO NOT TIGHTEN

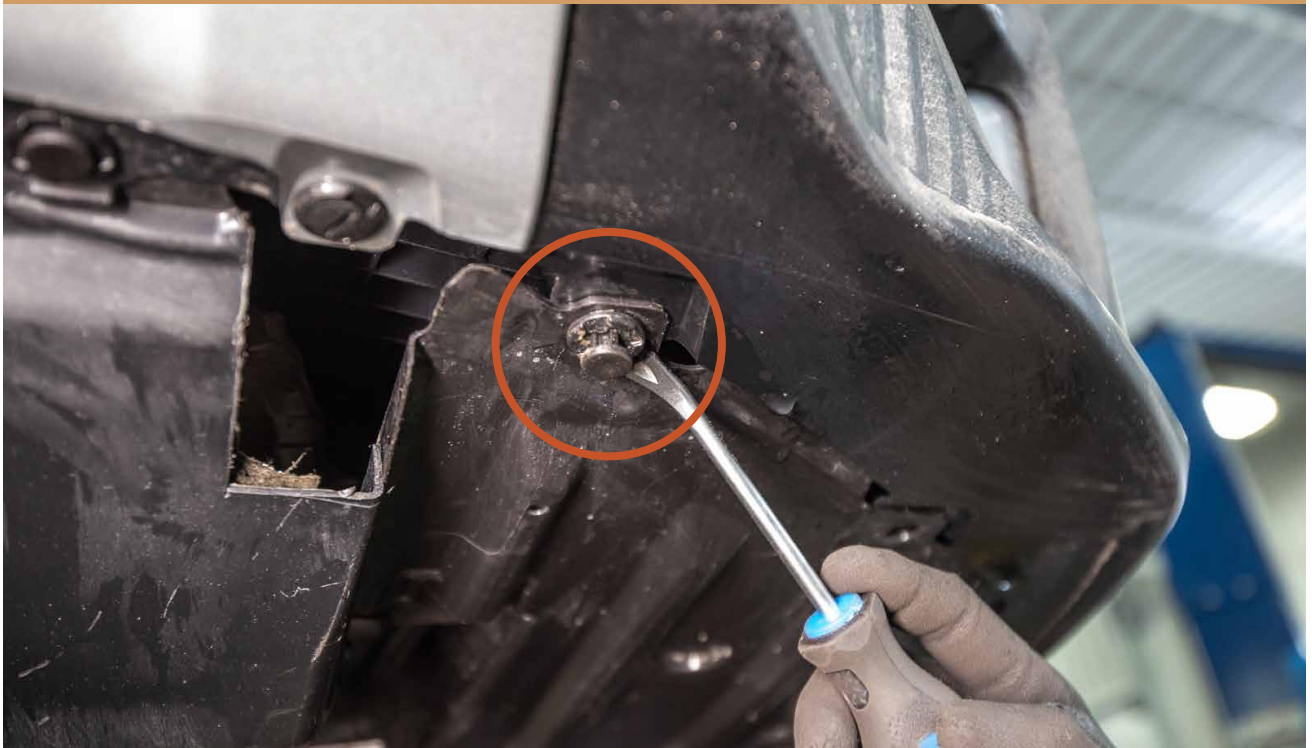




5

REMOVE PUSH PINS ON PLASTIC UNDER TRAY

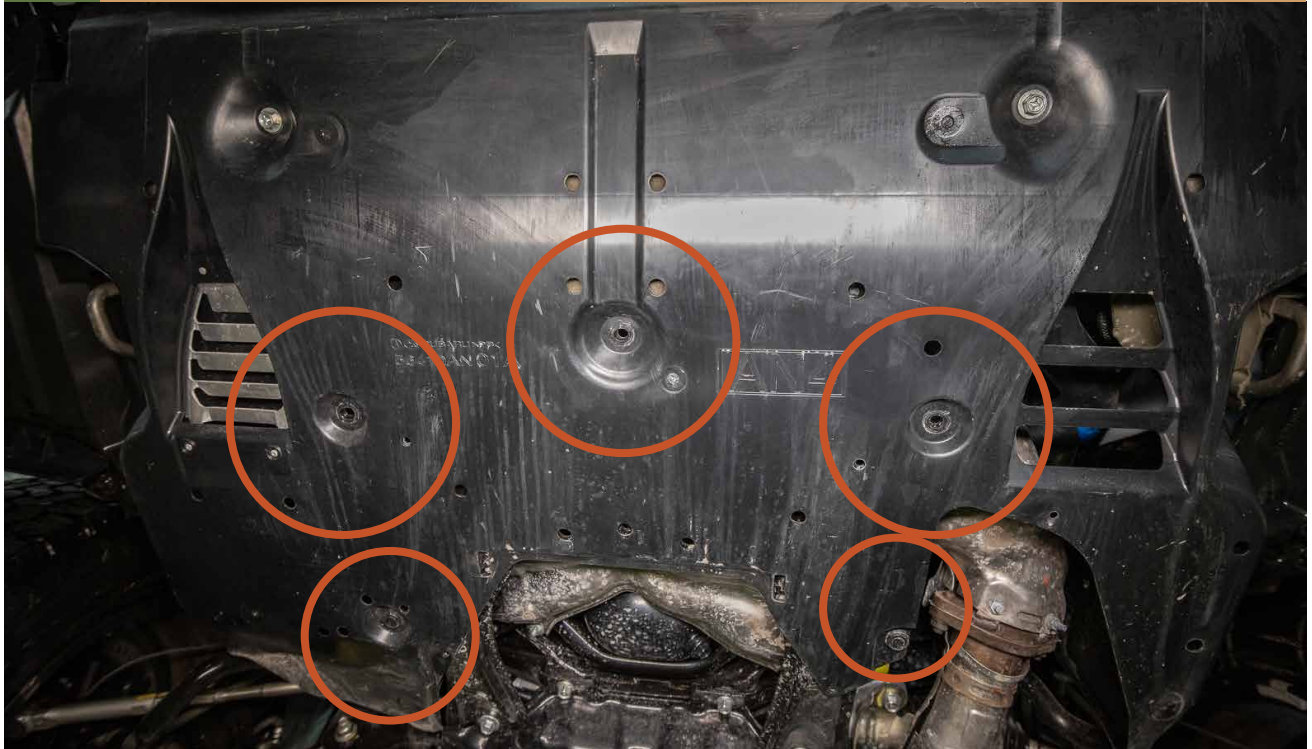












6

FOLD OVER SIDE COVERS AND SECURE WITH BUNGEE CORDS



7

REMOVE BOLTS ON UNDER TRAY



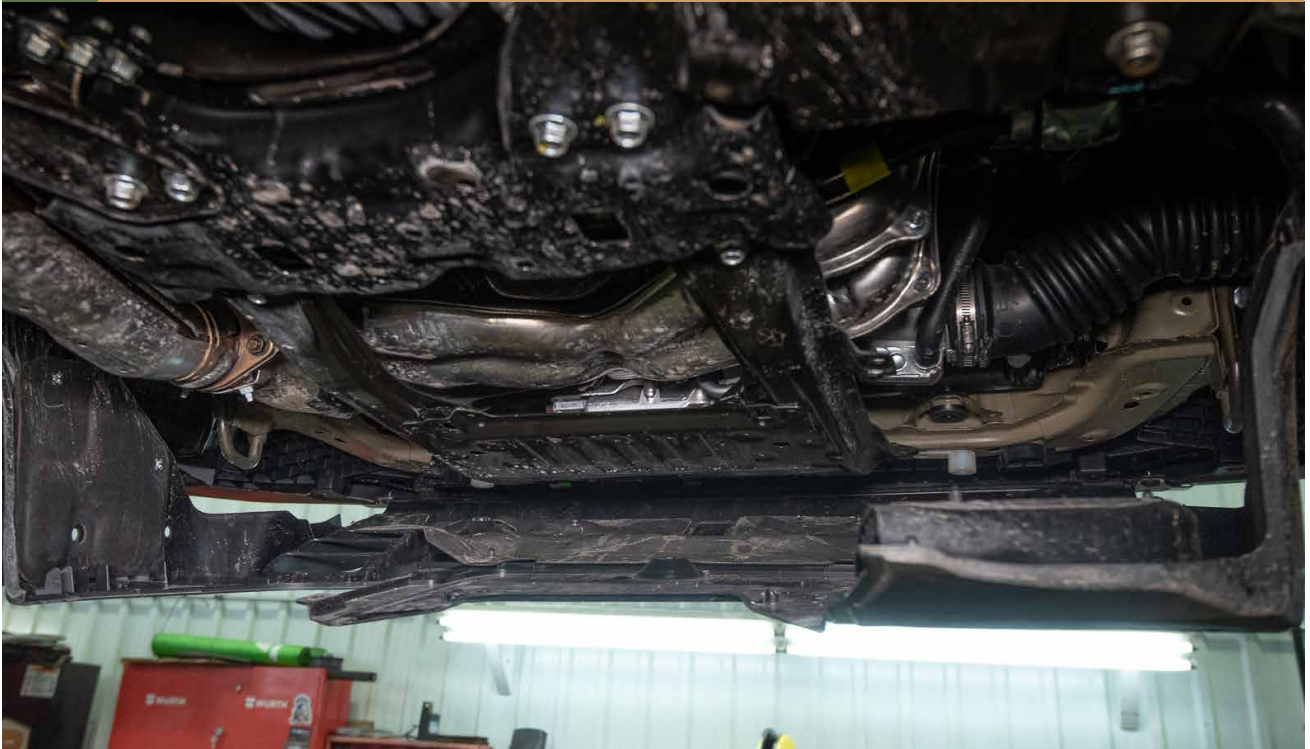
8

UNCLIP UNDER TRAY



9

## REMOVE UNDER TRAY



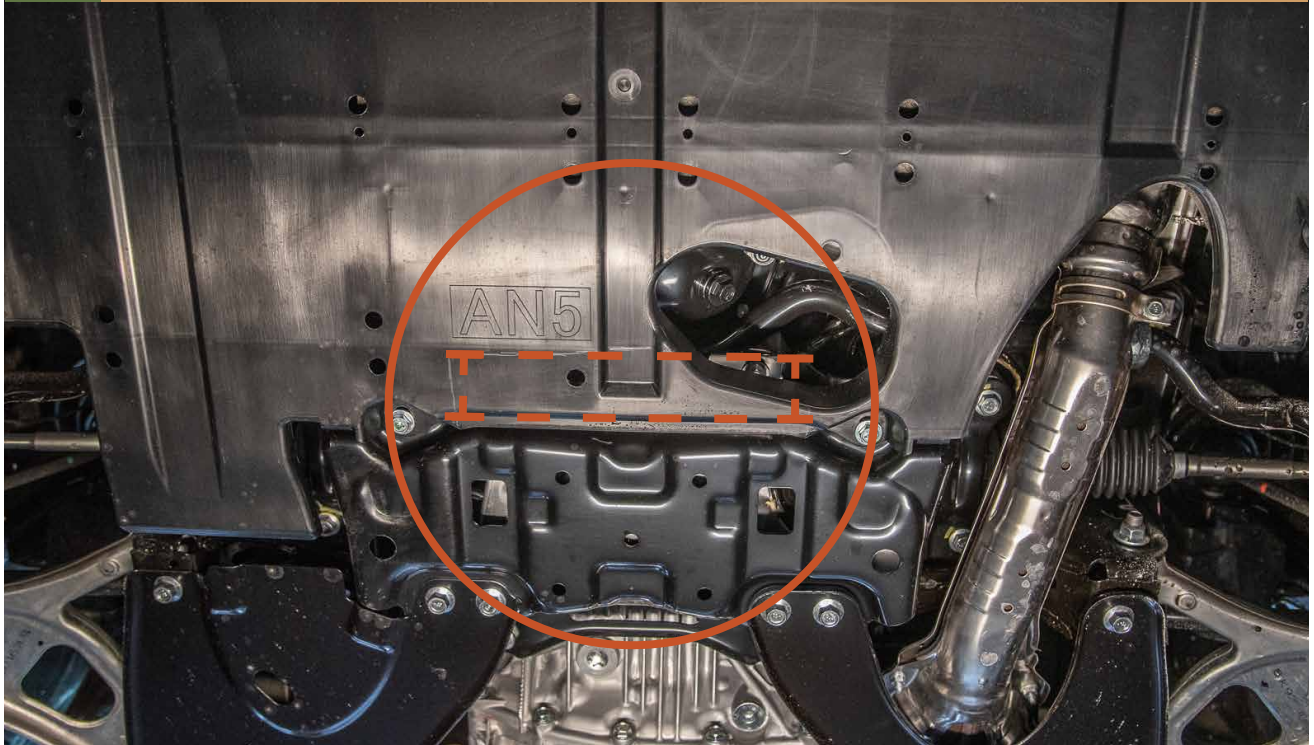
10

# TRIM UNDER TRAY



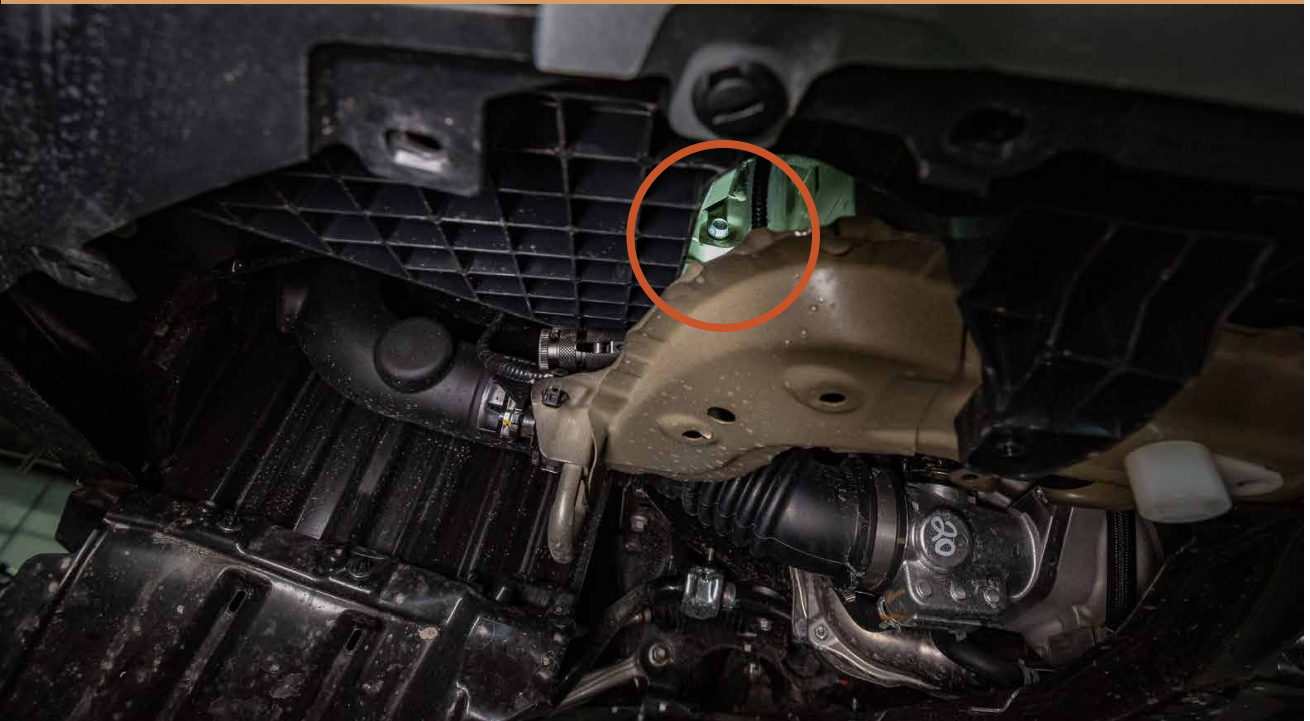
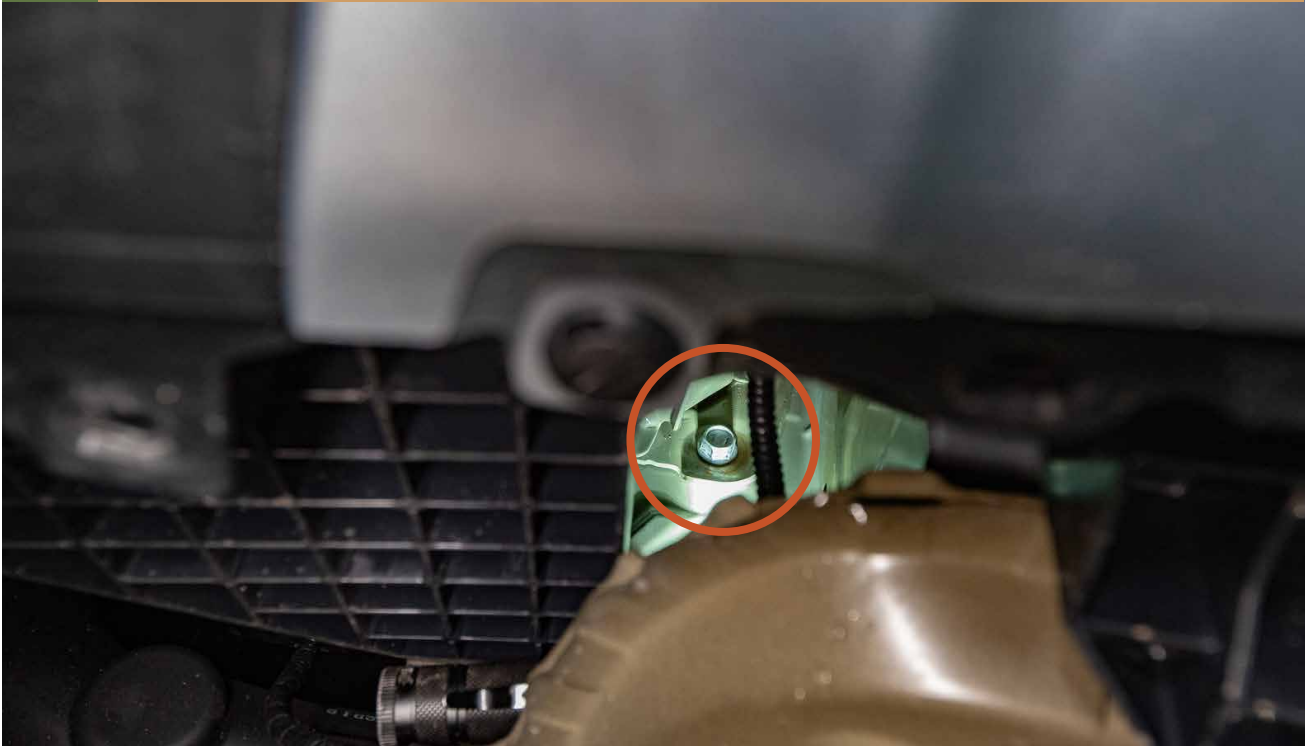
10B

FOR 2.5 MODELS YOU MUST ALSO TRIM HERE

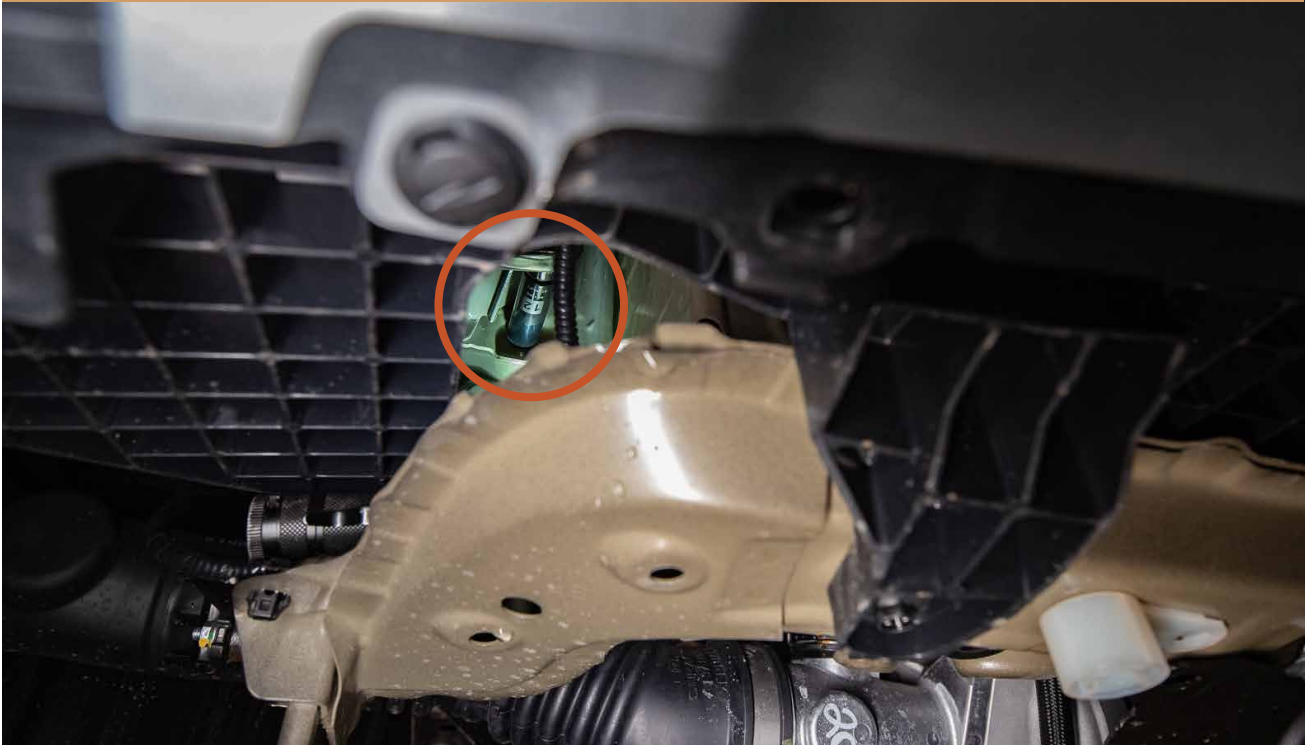


11

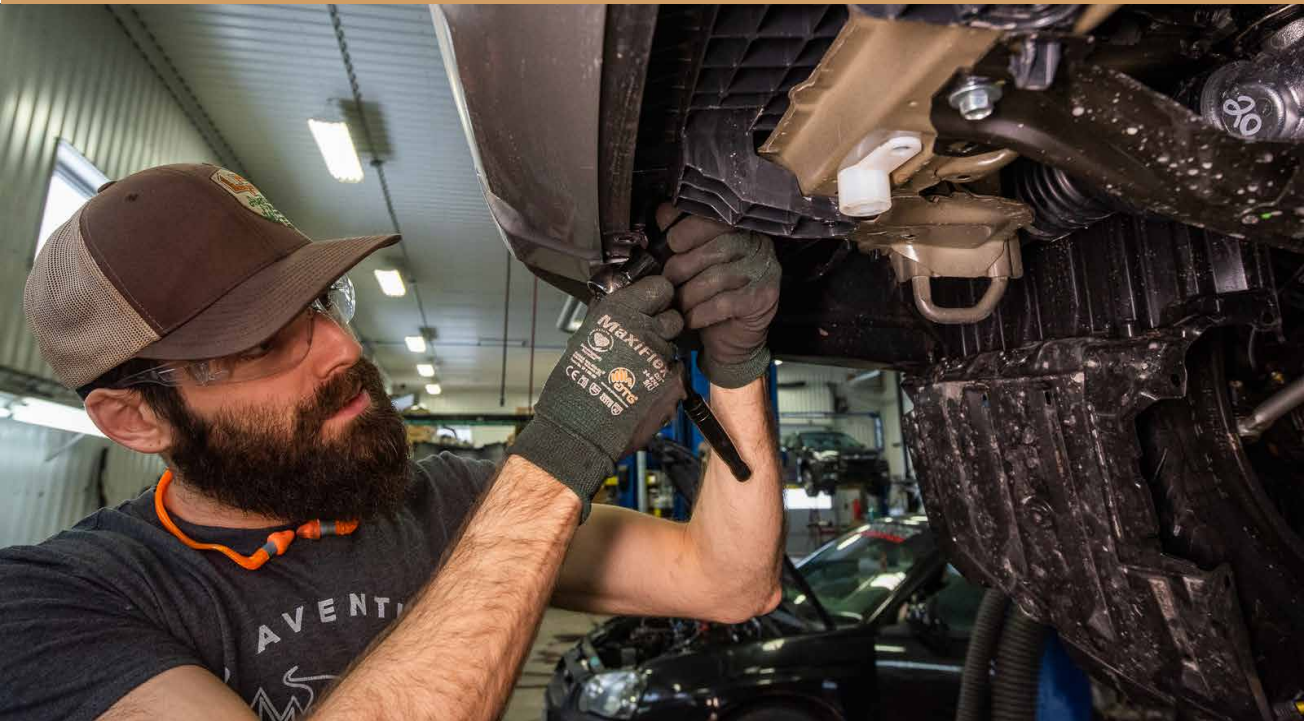
REMOVE BOLT TO INSTALL SUPPORT ROD





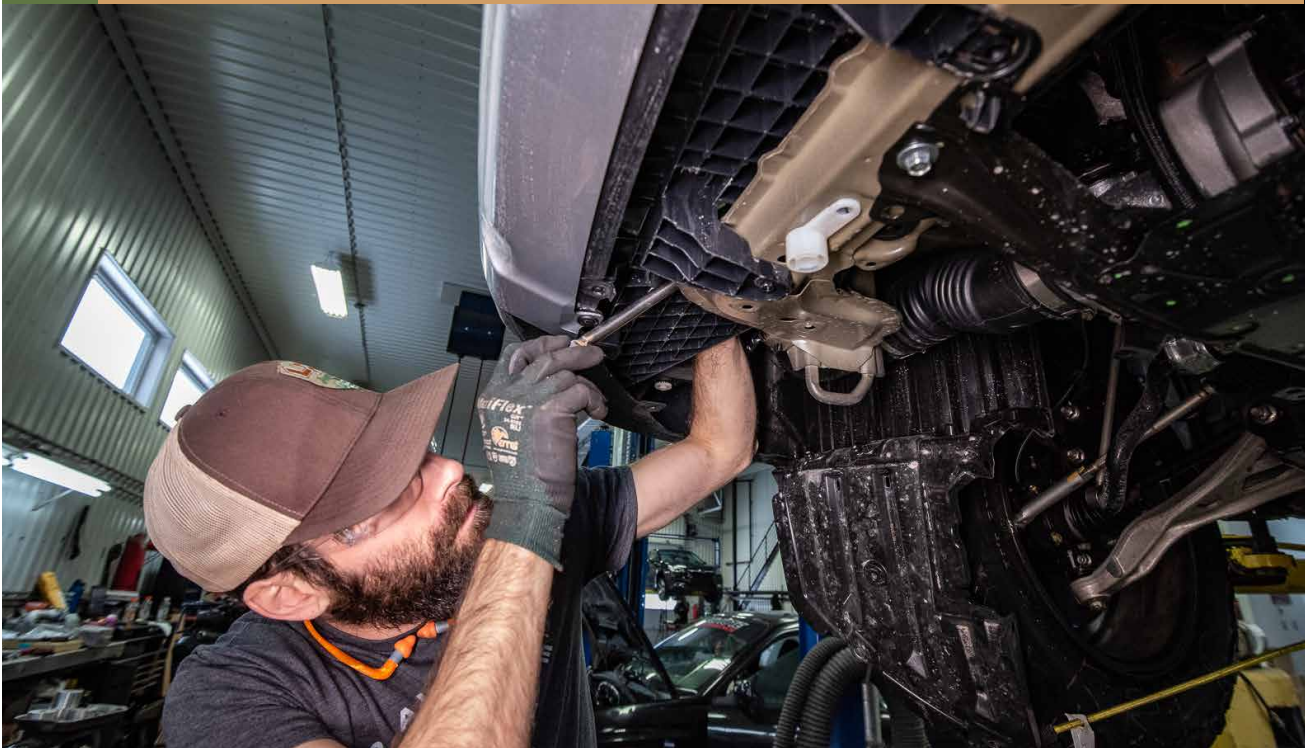


ONCE THE BOLT IS LOOSE WE SUGGEST THE  
USE AN EXTENTION SOCKET

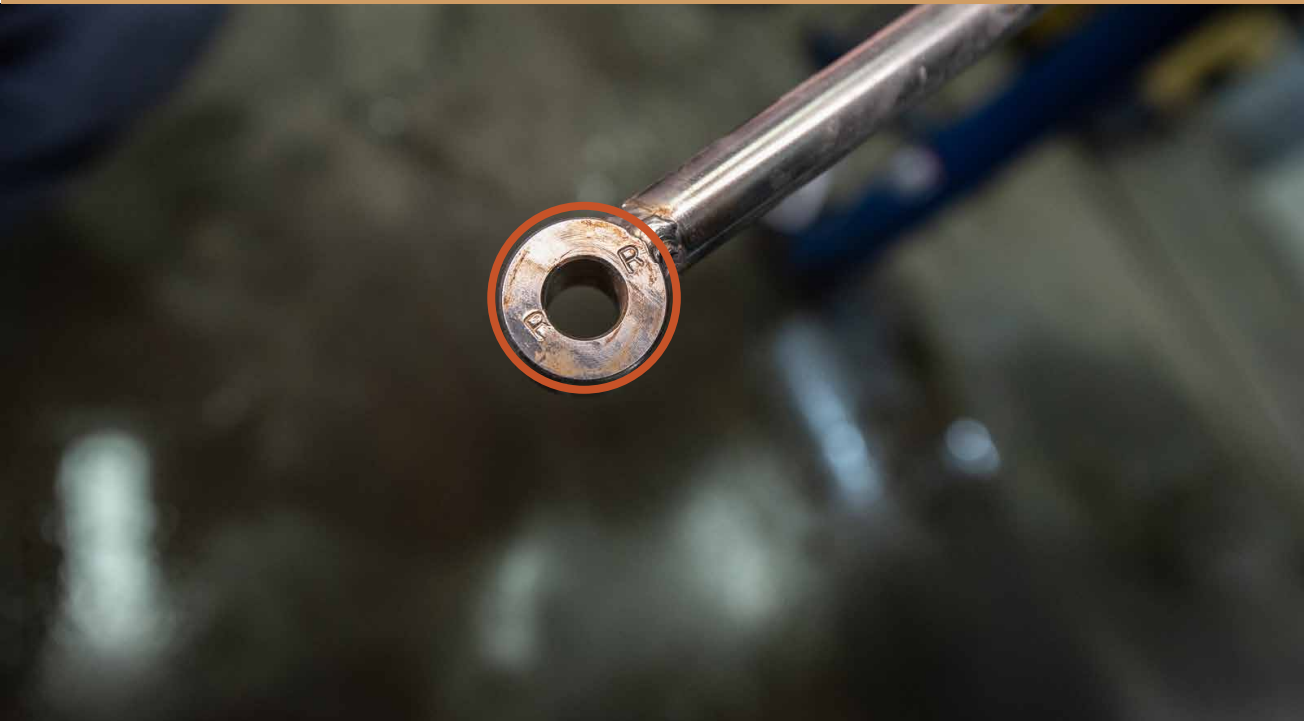


12

## INSTALL BUMPER GUARD SUPPORT RODS



MAKE SURE TO USE THE CORRECT ROD FOR EACH SIDE OF THE VEHICLE; R = DRIVERS RIGHT SIDE



PLACE SUPPORT RODS AS SHOWN



17

TIGHTEN BOLTS FOR THE SUPPORT RODS



13

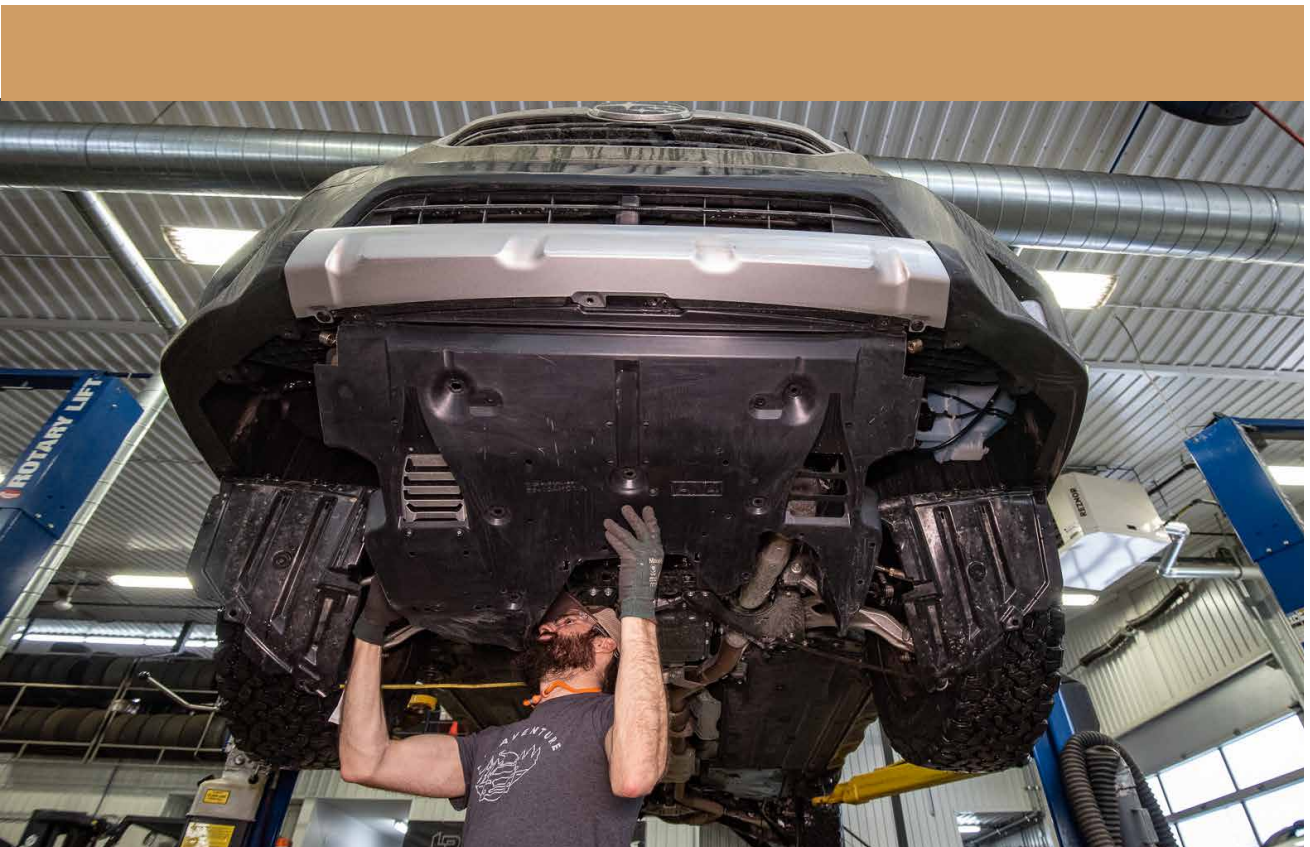
DRIVERS RIGHT SIDE

DRIVERS LEFT SIDE



14

PUT BACK UNDER TRAY AND SIDE COVERS

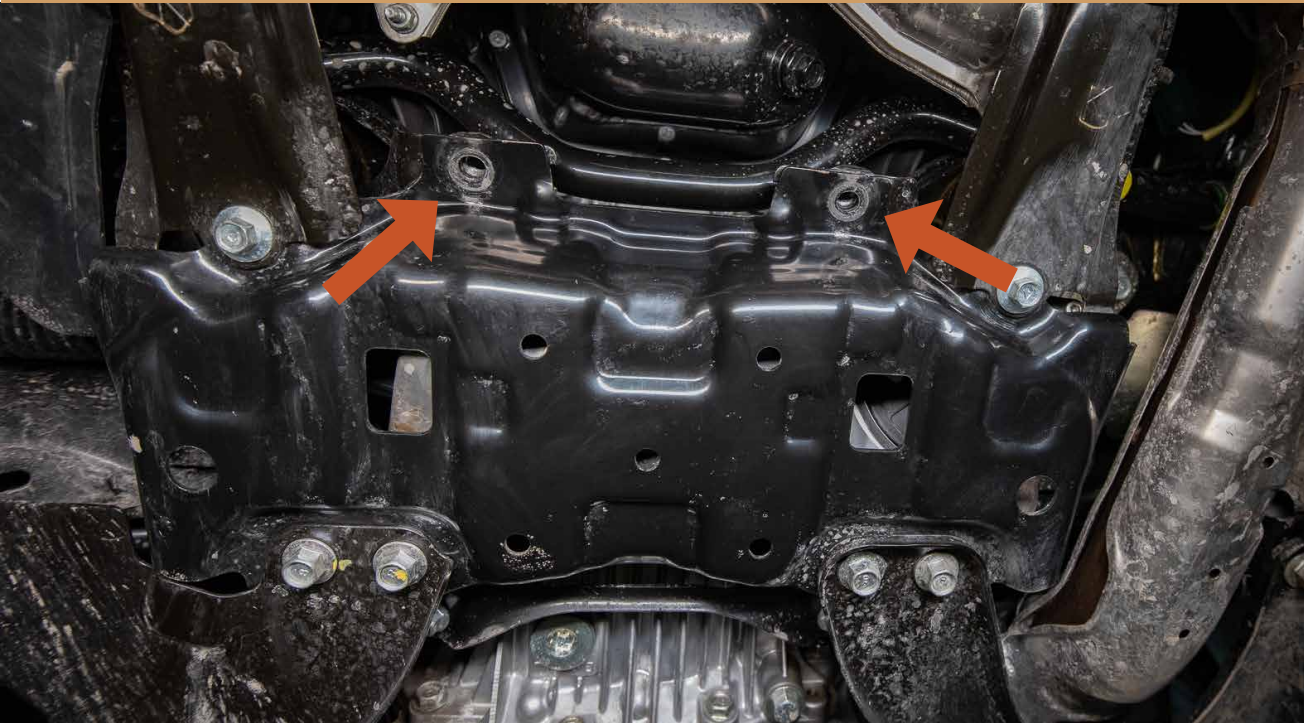
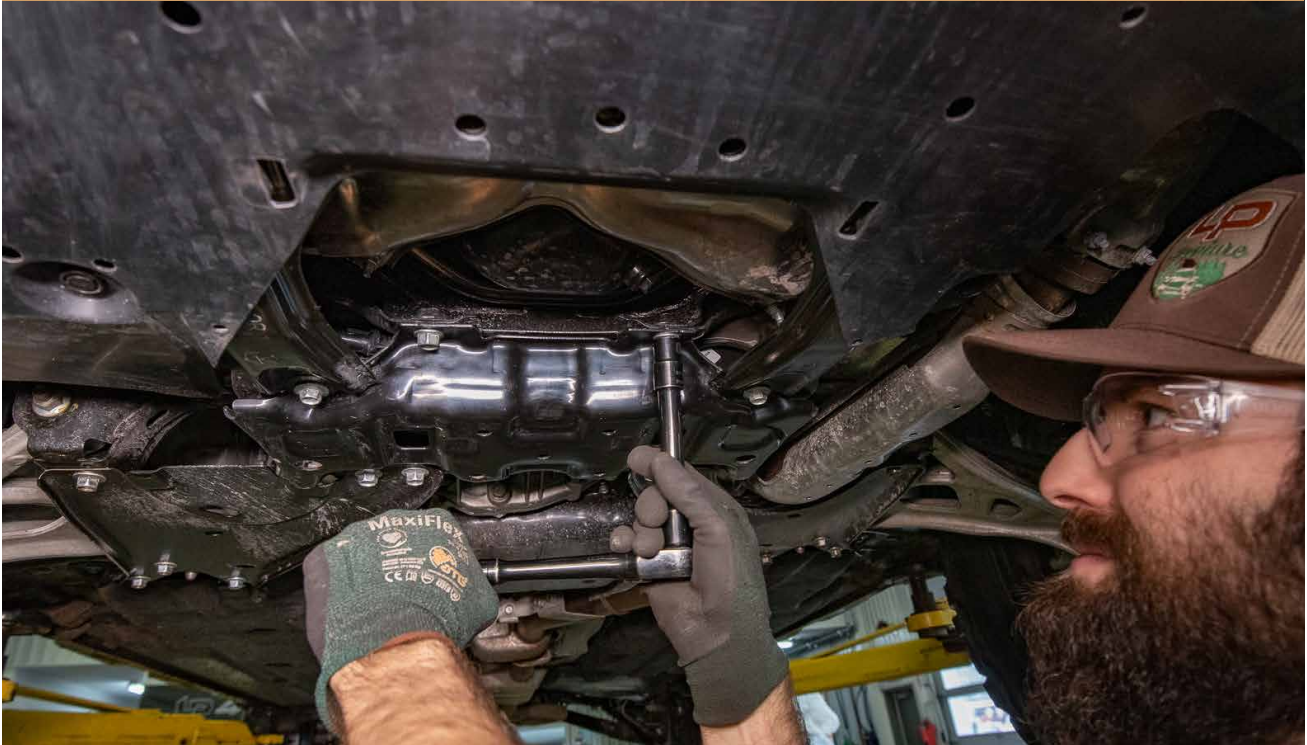




15

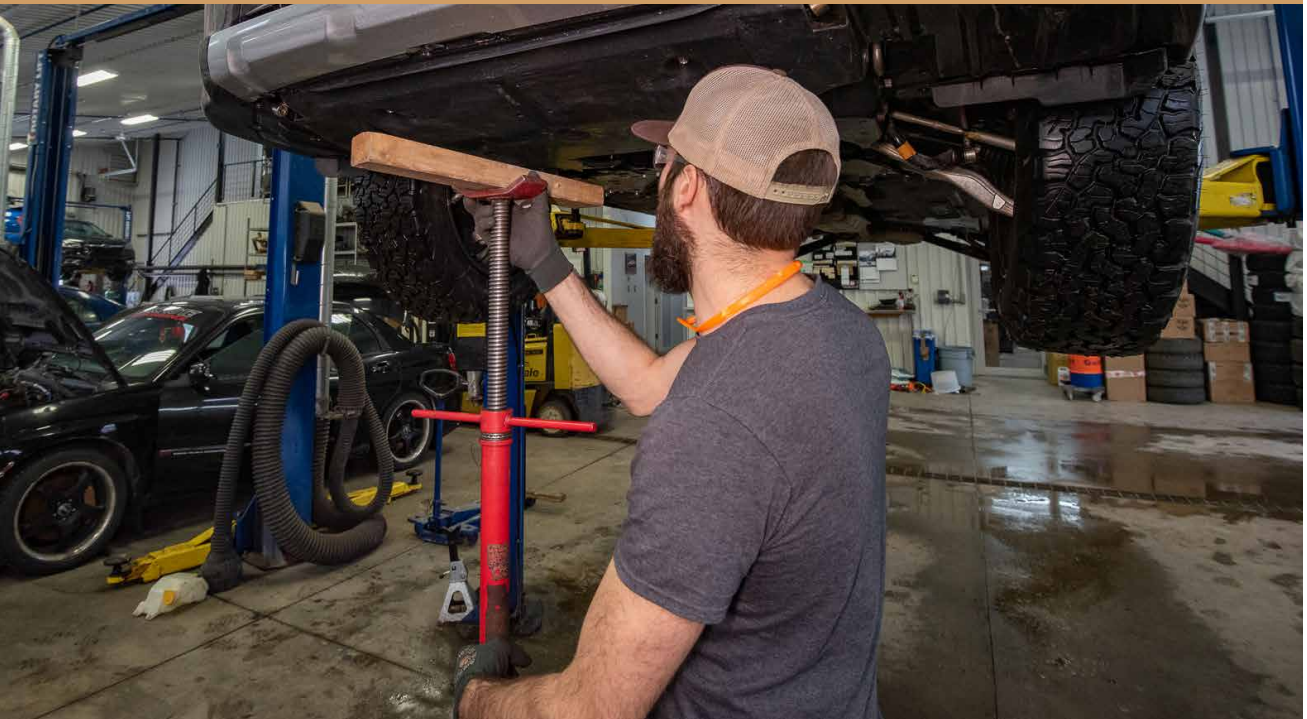
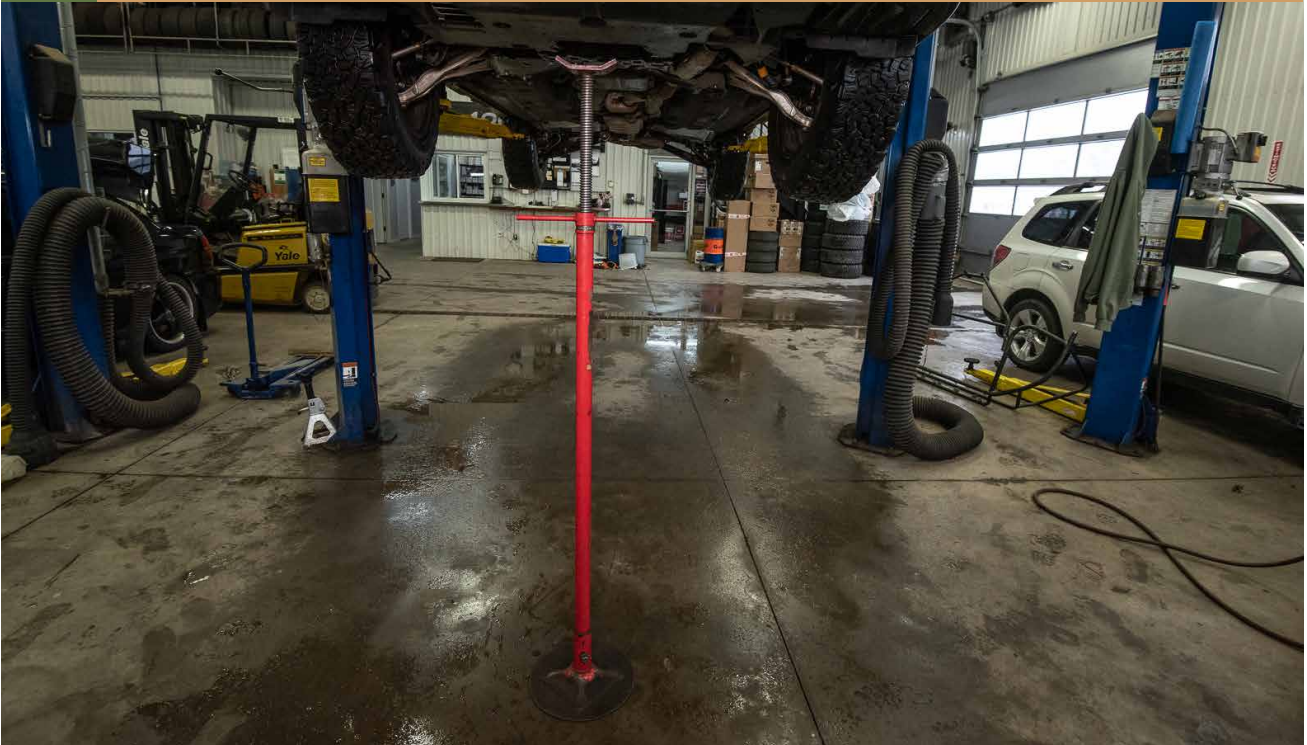
REMOVE THESE TWO BOLTS





16

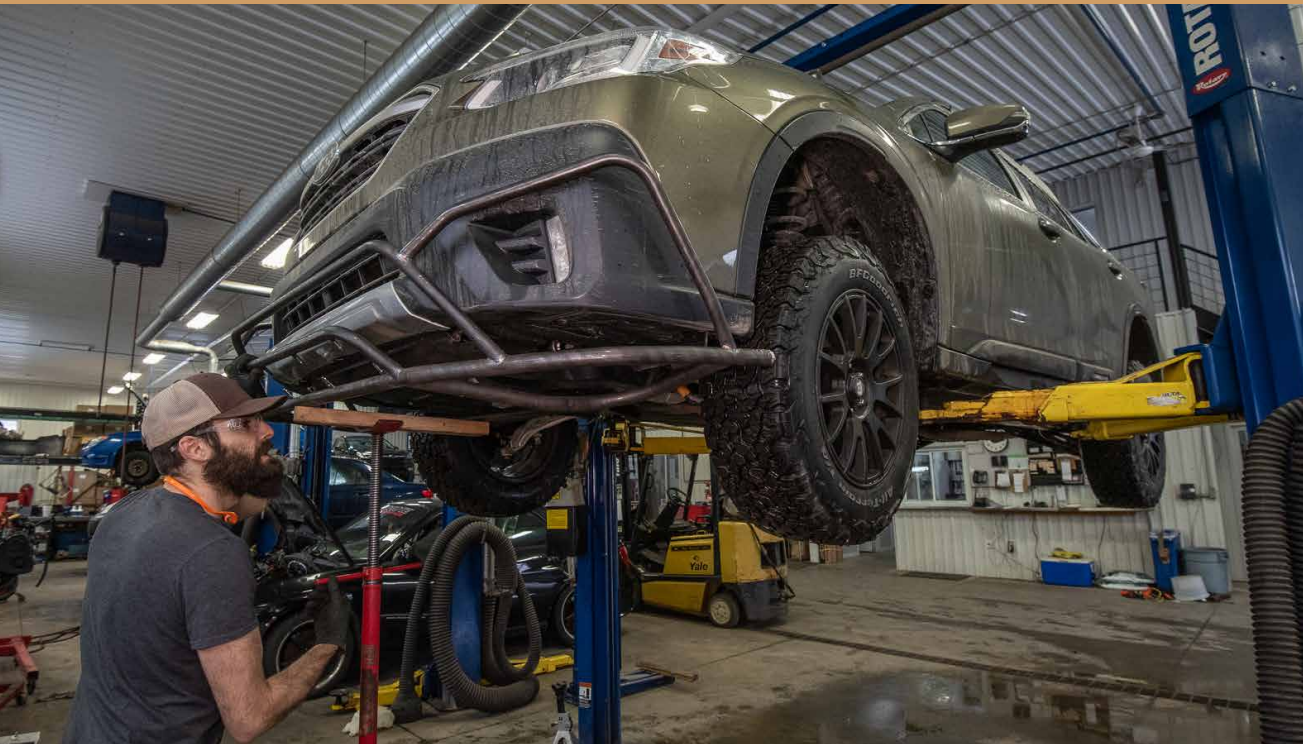
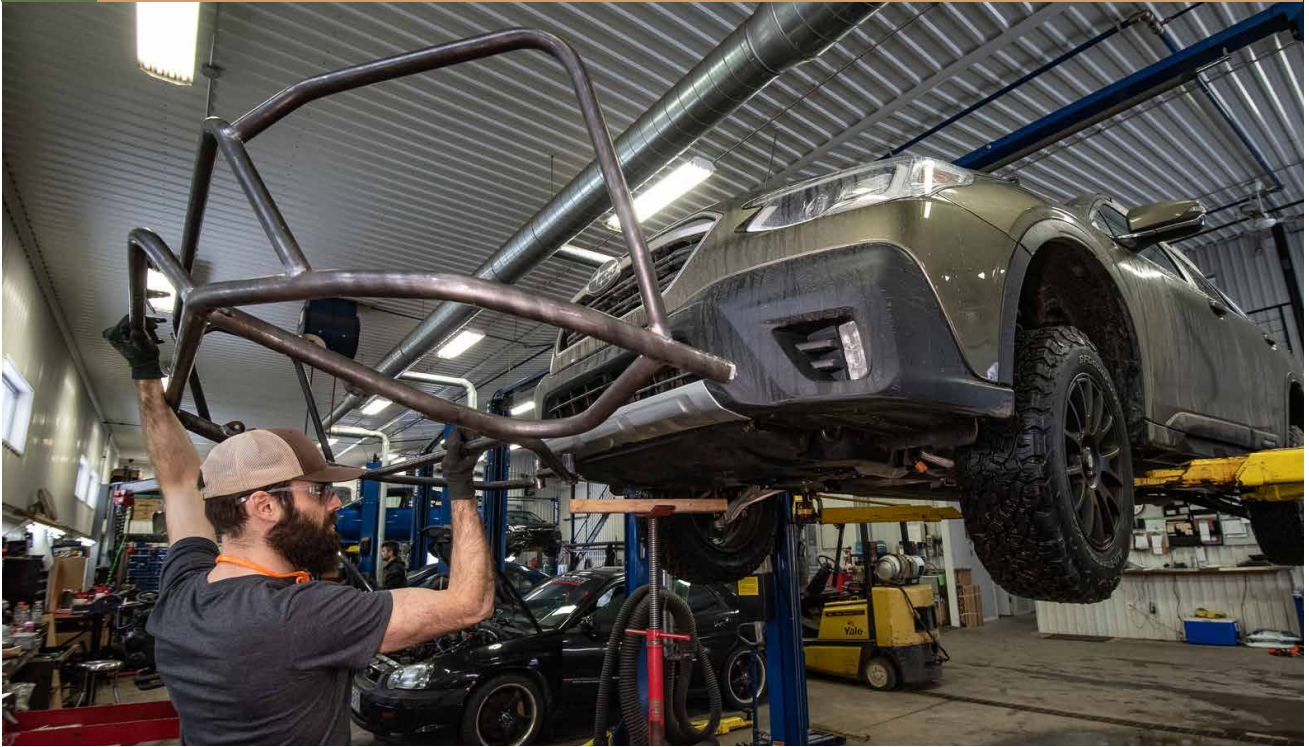
USE A JACK STAND AND PIECE OF WOOD TO INSTALL THE BUMPER GUARD



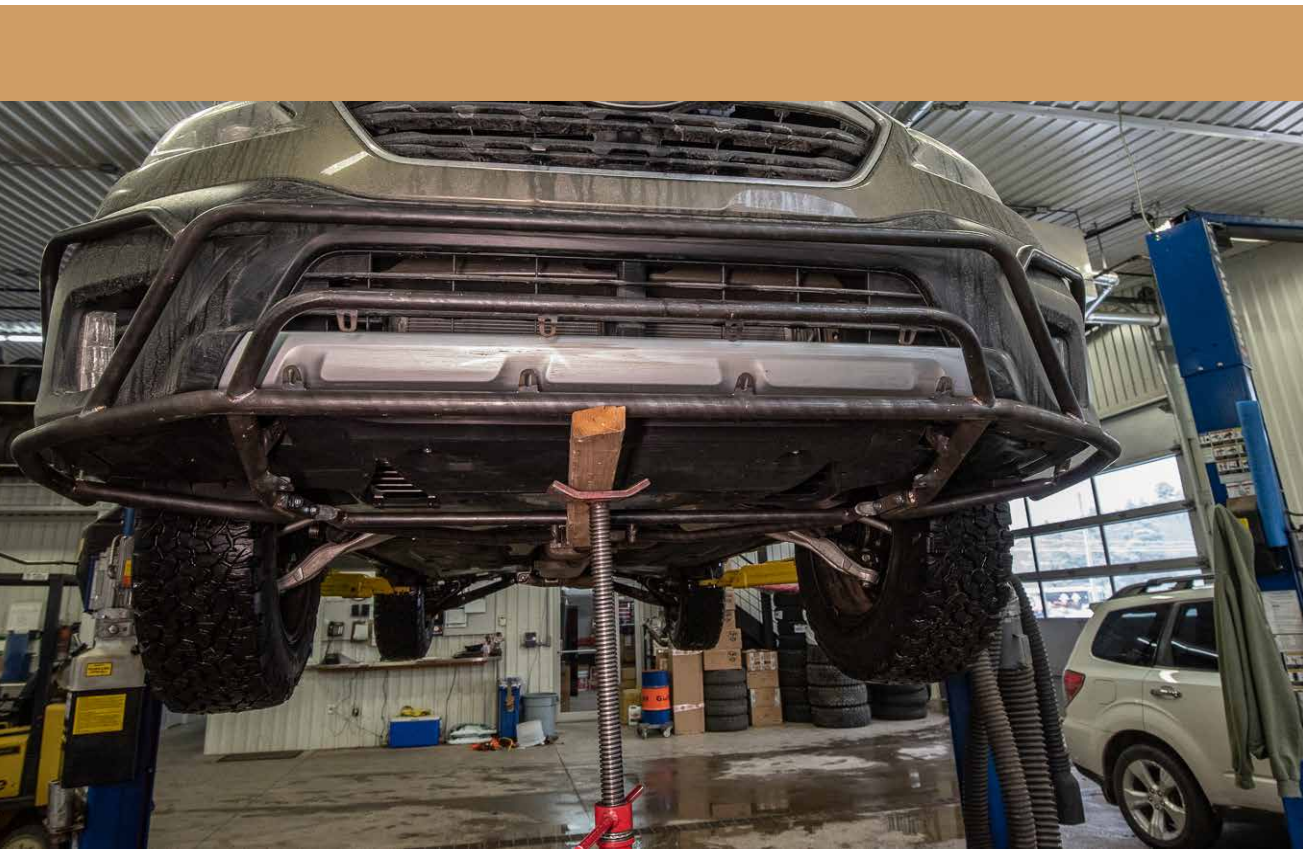
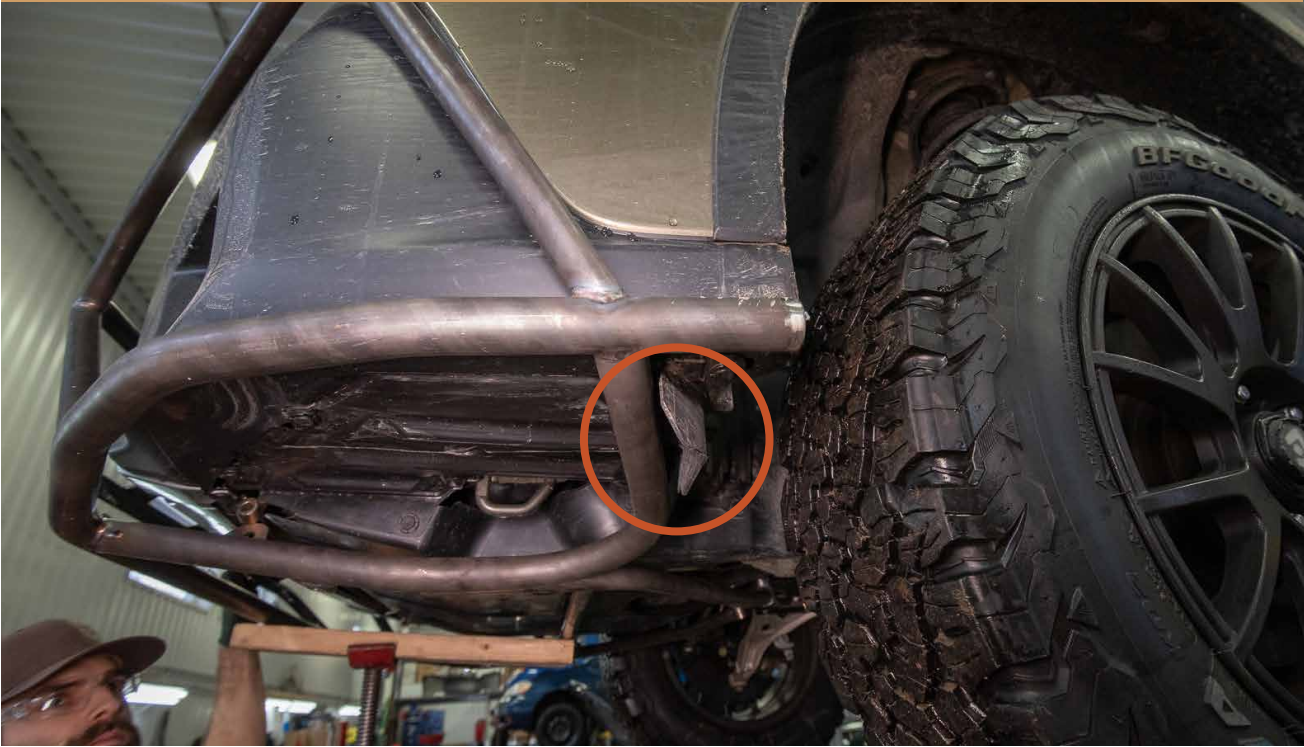


17

INSTALL THE BUMPER GUARD INTO PLACE



MAKE SURE THE BUMPER GUARD IS POSITIONED IN FRONT OF THE PLASTIC DEFLECTOR



18

INSTALL MOUNTING HARDWARE  
BUT DO NOT ALL THE WAY TIGHTEN YET

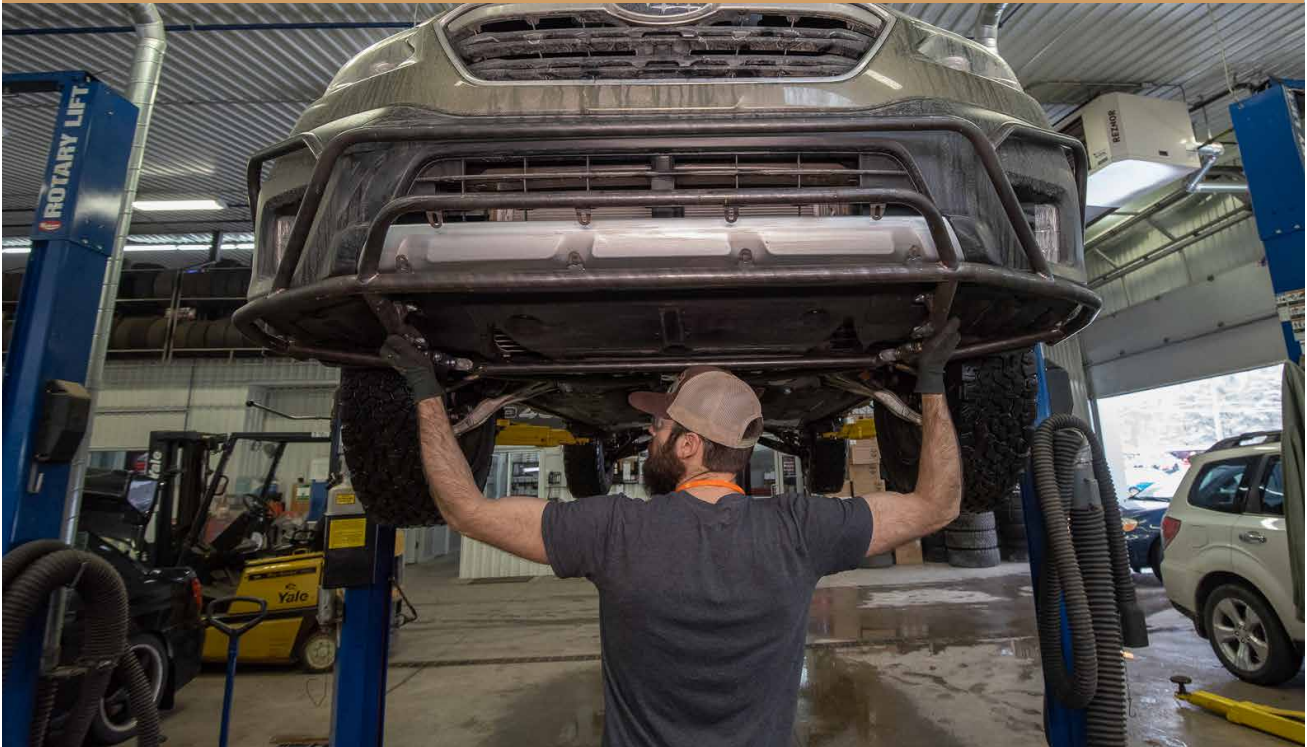


19

MAKE SURE BUMPER TO BUMPER GUARD GAP IS EQUAL ON BOTH SIDES



IF THE GAPS ARE NOT EQUAL, ROTATE THE BUMPER GUARD TO THE LEFT OR RIGHT DEPENDING ON WHAT SIDE HAS MORE ROOM



20

WITH THE GAPS SET YOU CAN NOW TIGHTEN ALL HARDWARE



INSTALLATION COMPLETE!





**You have completed the installation.  
Thank you for your interest  
in our products.**

**For all requests, information or  
assistance: Contact our team  
by phone at  
**1 (866) 562-1316****

**We are available Monday to Friday  
Between 8AM and 5PM (EST).**

**Or by email at :  
**SALES@LPAVENTURE.COM**  
**WWW.LPAVENTURE.COM****

**NOW, ENJOY THE RIDE!**