



# -INSTALLATION- INSTRUCTIONS

▶ LP AVENTURE GAS TANK SKID PLATES ◀

-CROSSTREK 2018-2023-

-CROSSTREK 2024+ AND WILDERNESS-

-OUTBACK 2020-2024 AND WILDERNESS-

-FORESTER 2019-2024 AND WILDERNESS-

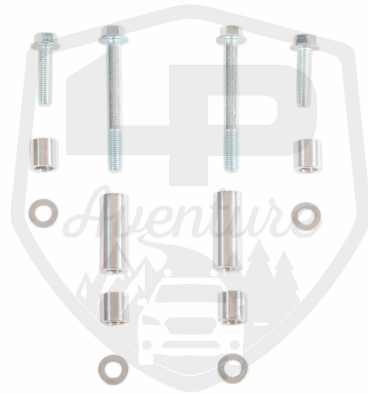
-WRX 2022-2024-

# CONGRATULATIONS ON YOUR NEW LP AVENTURE GAS TANK SKID PLATES!

If you have any questions or need assistance during the installation, please contact our team. You can find the information on the last page.



IN THE BAGS





## NECESSARY TOOLS

- 1. - We recommend the use of a lift**
- 2. - Transmission jack stand to support the gas tank**
- 3. Ratchet and or Small impact**
- 4. 12mm Socket**
- 5. 14mm Socket**
- 6. 6” Extension**
- 7. 12” Extension**
- 8. Push pin removal tool**
- 9. Swivel socket**



**\*\*GAS TANK SPACER FITMENT GUIDE\*\***

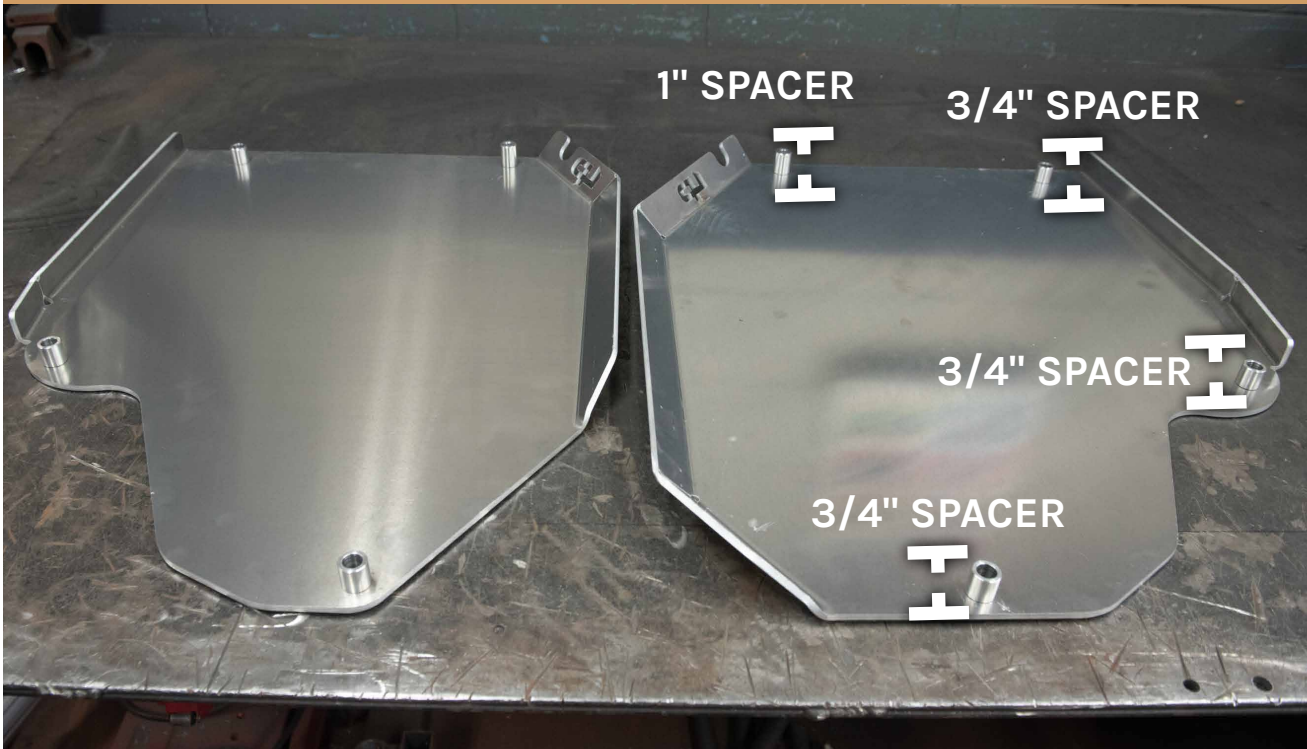
**CROSSTREK, WRX, FORESTER OR OUTBACK WITH OUT A LIFT**



**CROSSTREK + WRX / LIFTED WITH 1.5 SUBFRAME SPACERS**



FORESTER + OUTBACK / LIFTED WITH 2" SUBFRAME SPACERS



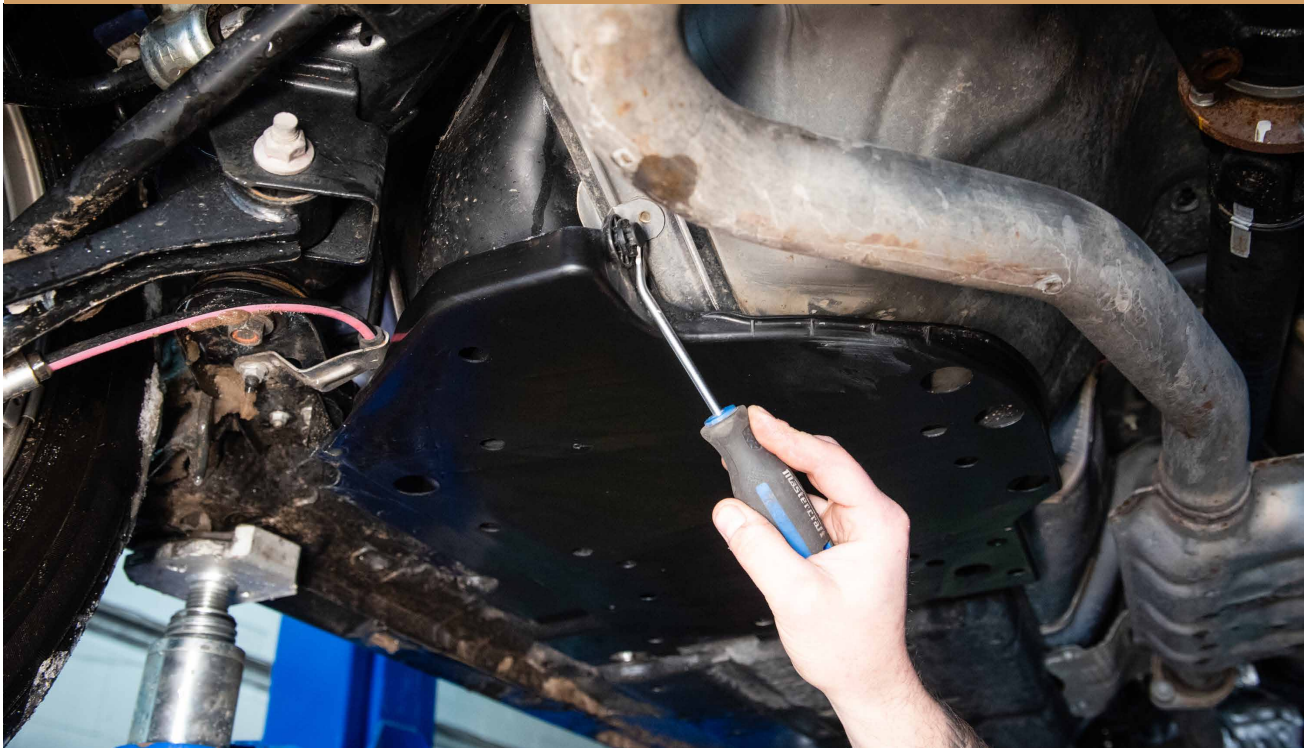
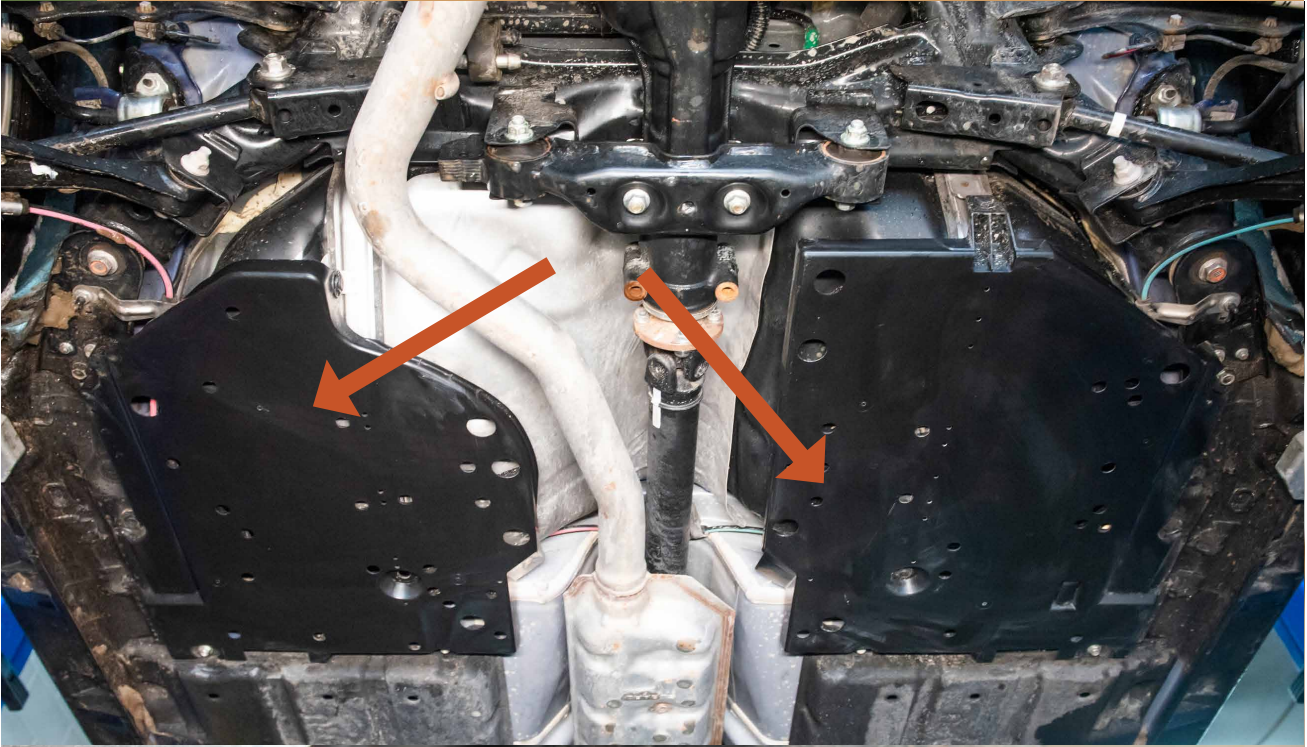
FORESTER + OUTBACK NOT LIFTED BUT WITH LP AVENTURE ROCKSLIDERS





1

REMOVE FACTORY GAS TANK PLASTICS GUARDS.







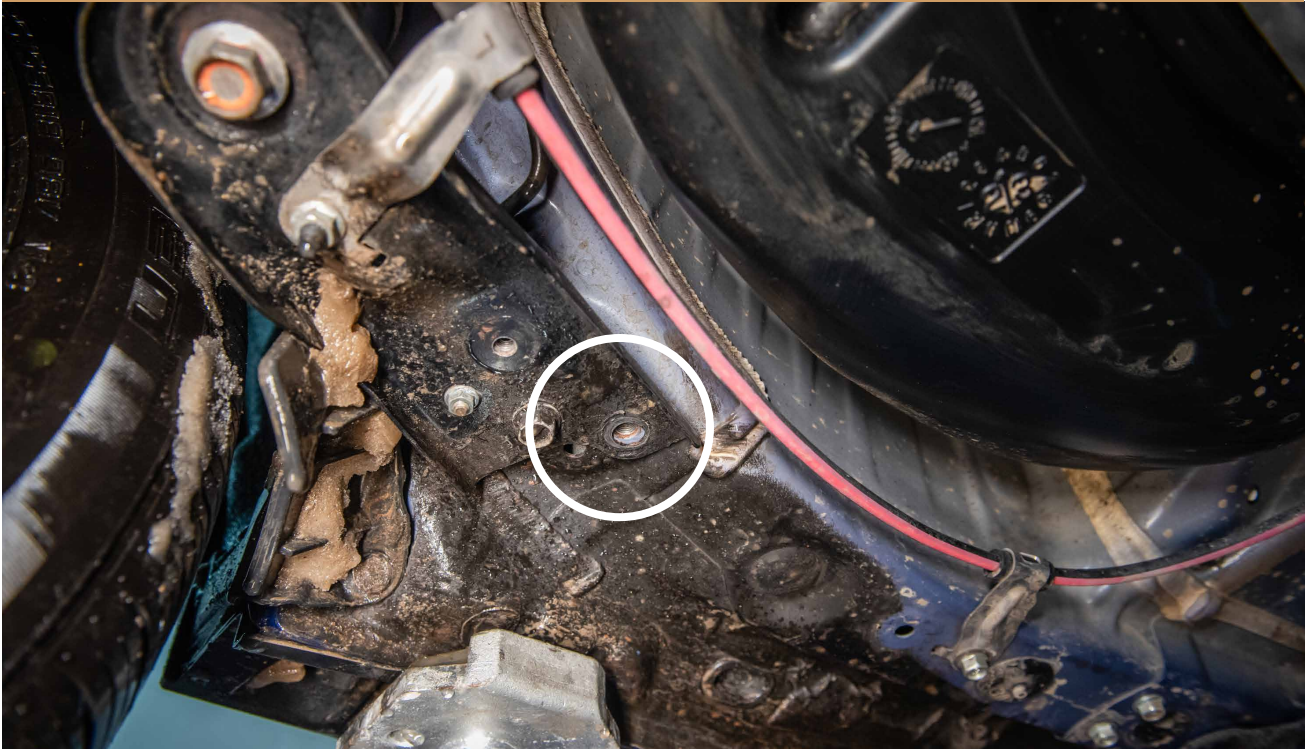


2

REMOVE BOLT

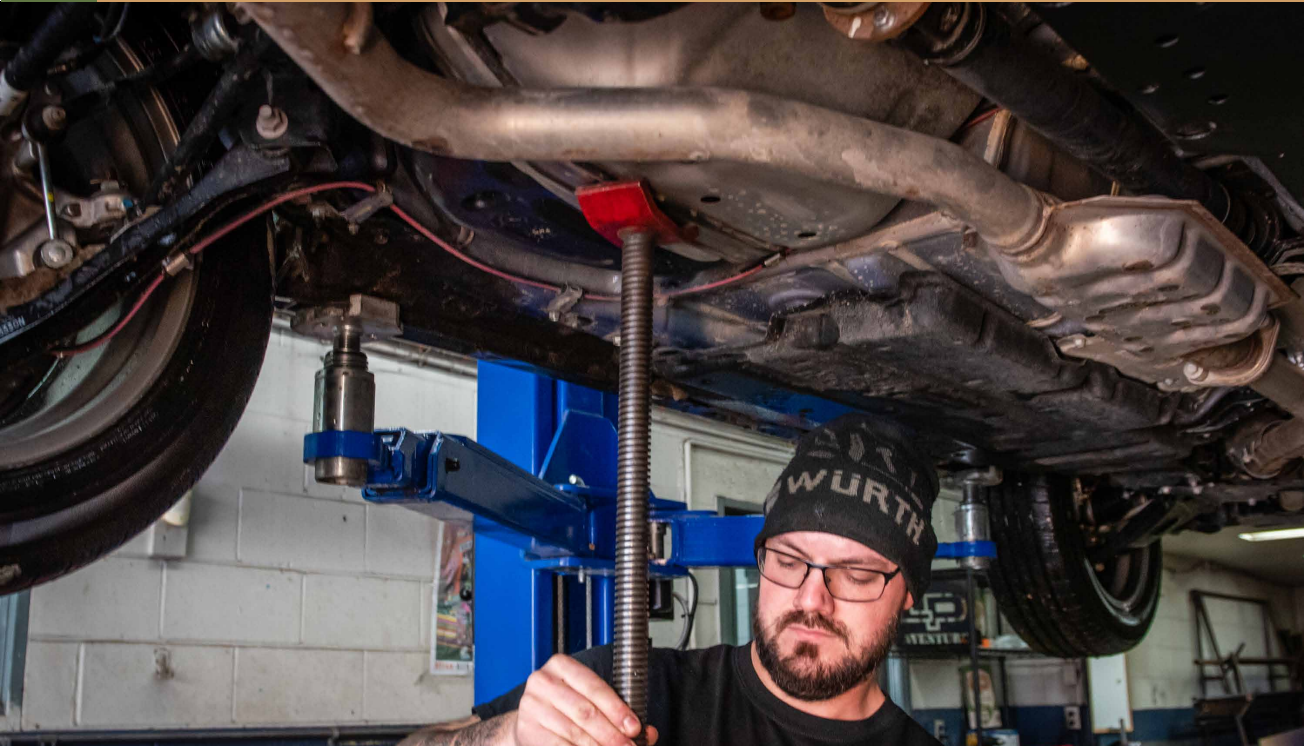






3

USE A JACK TO SUPPORT THE GAS TANK  
\* ONLY DO ONE SIDE AT A TIME



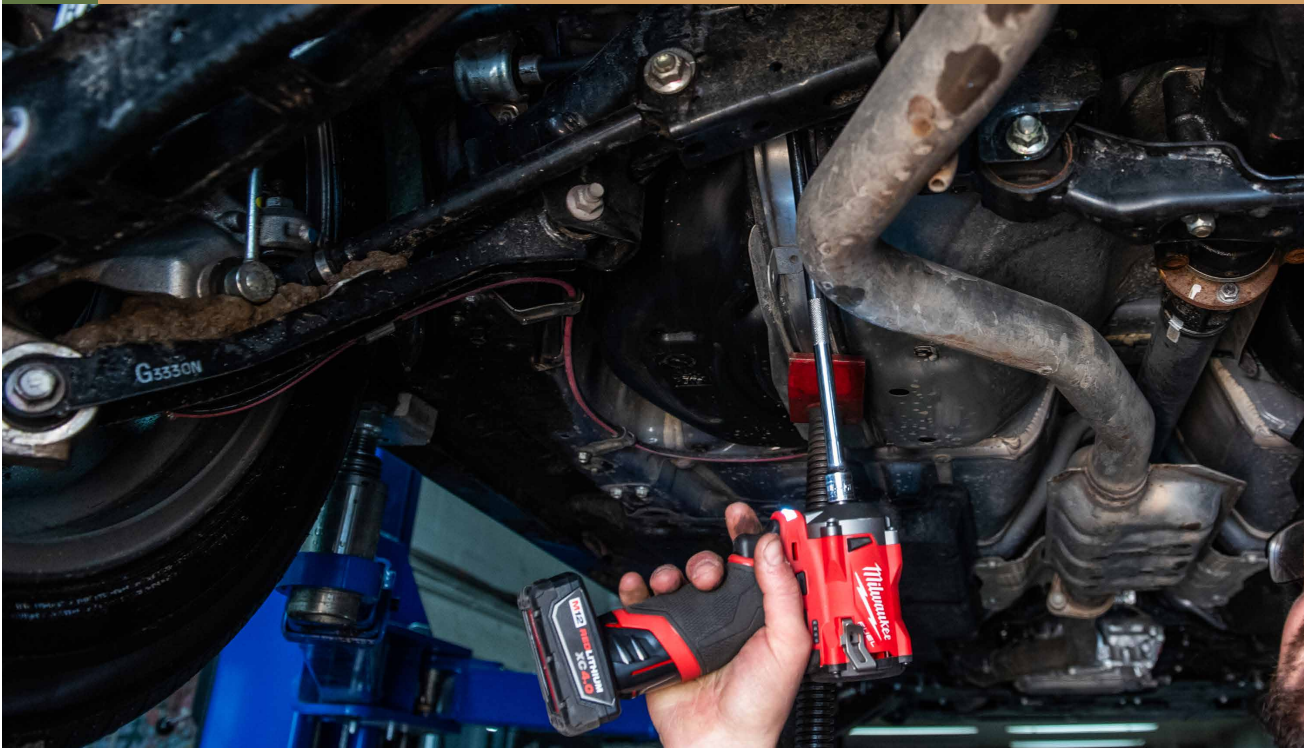


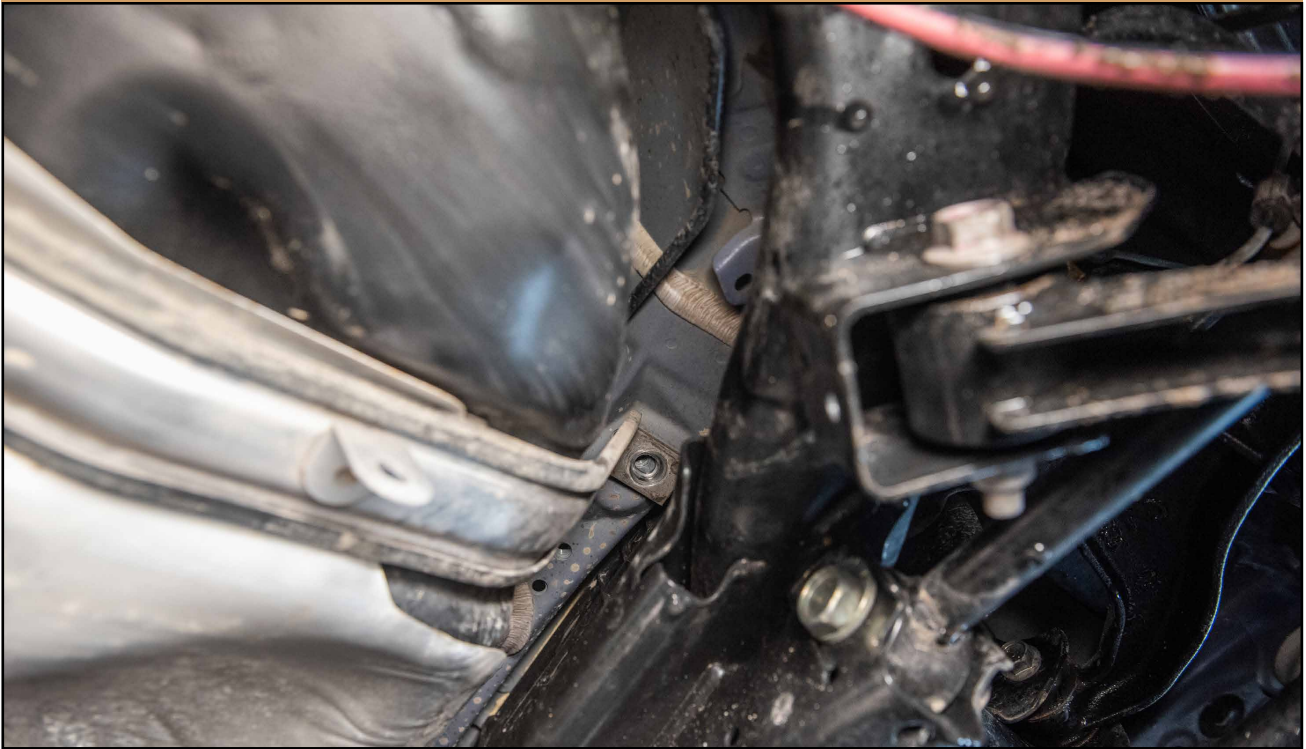
4

USING A LONG EXTENSION, REMOVE GAS TANK STRAP BOLT



5



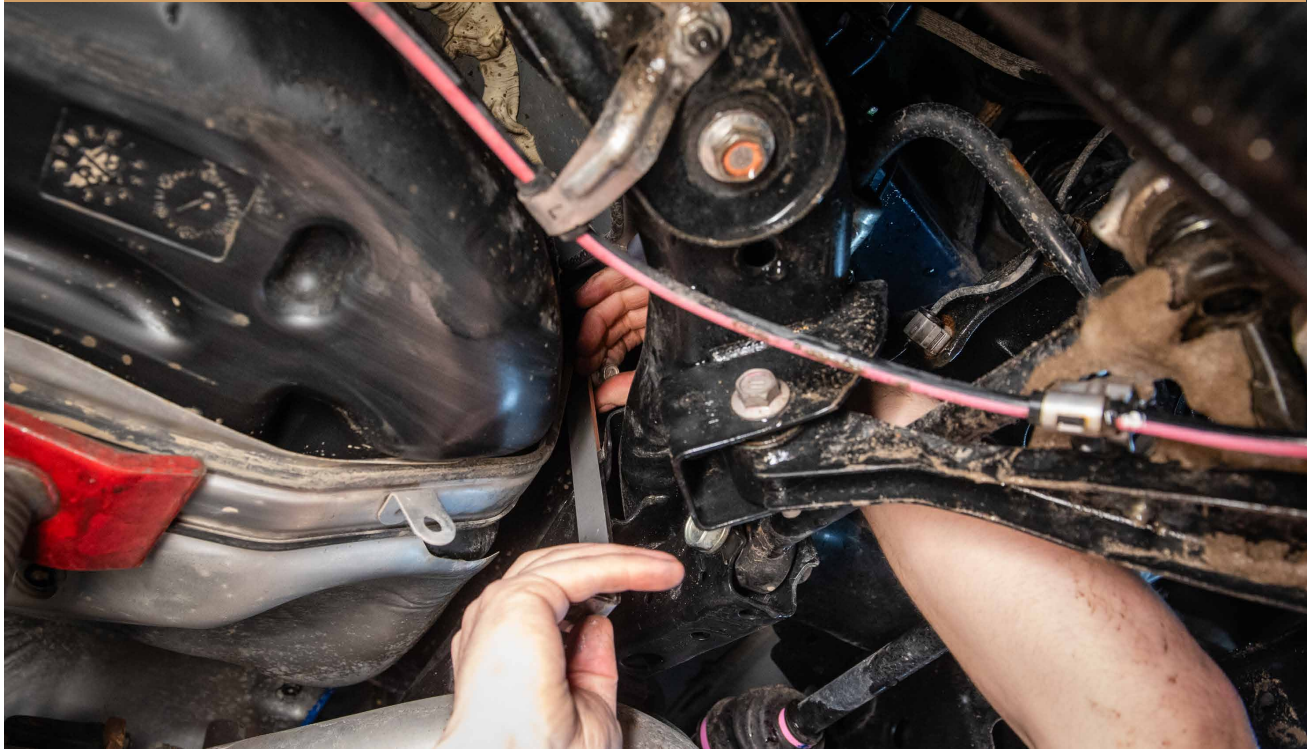


6

INSTALL THE GAS TANK SKID BRACKET



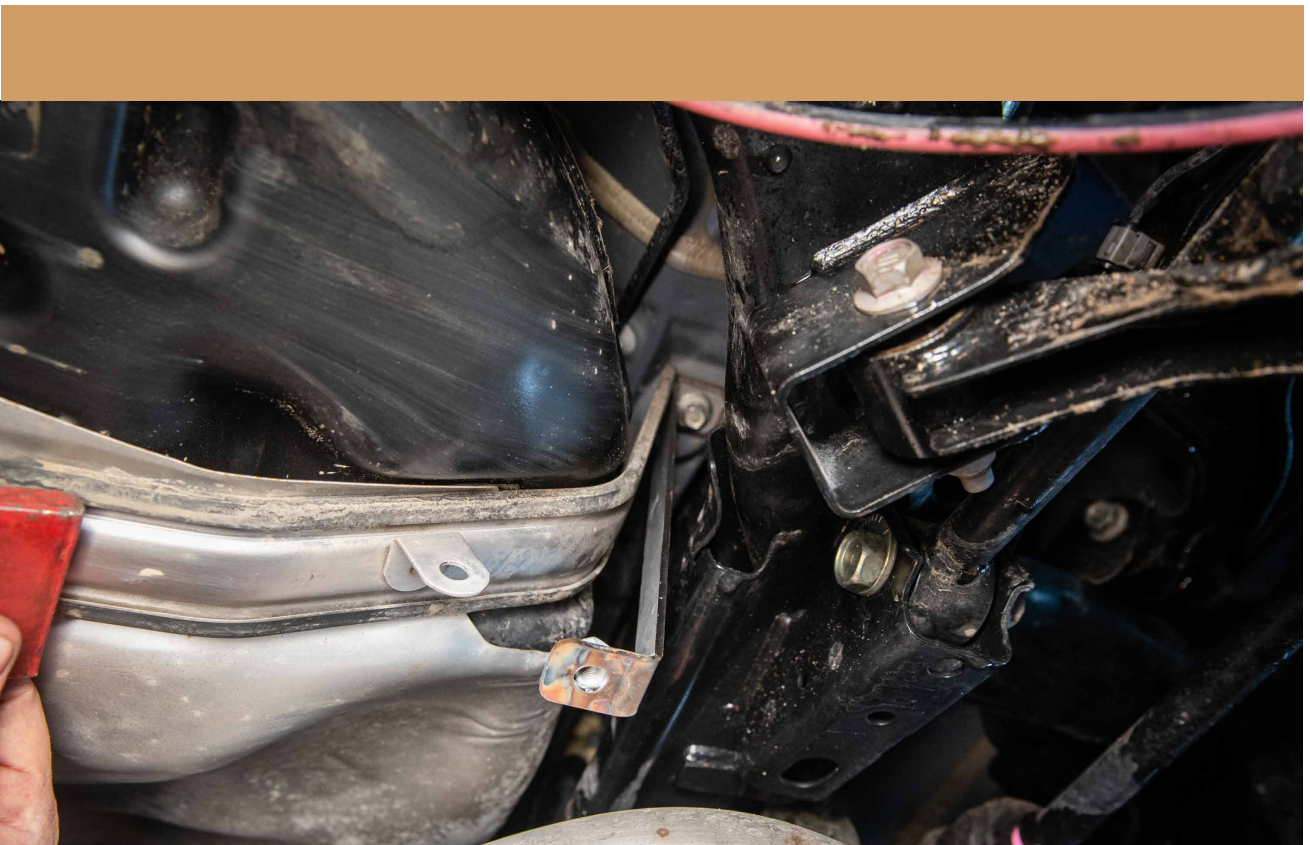






7

SNUG UP THE BOLT BUT DO NOT TIGHTEN COMPLETELY YET





8

YOU CAN NOW REMOVE THE JACK SUPPORTING THE GAS TANK



9

USING THE CORRECT SKID PLATE SPACERS FOR YOUR APPLICATION AND THE SUPPLIED BOLT AND WASHER, INSTALL THE SKID PLATE INTO PLACE.

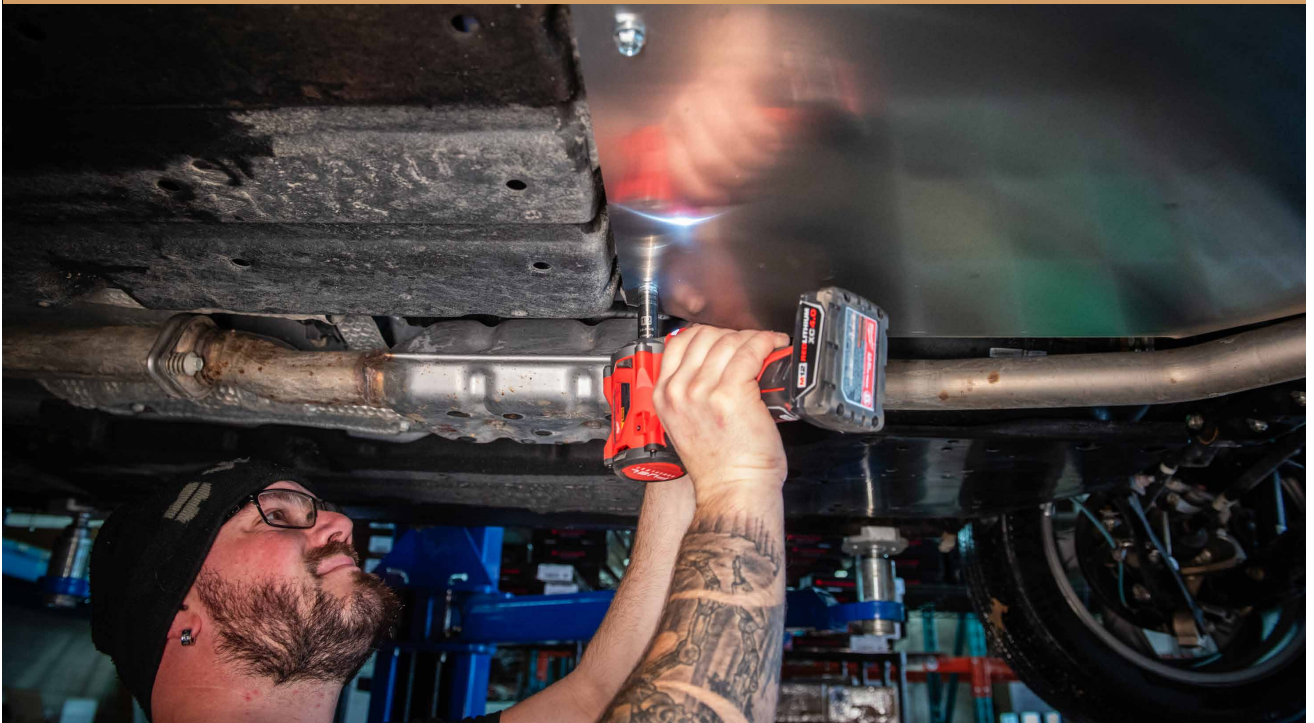




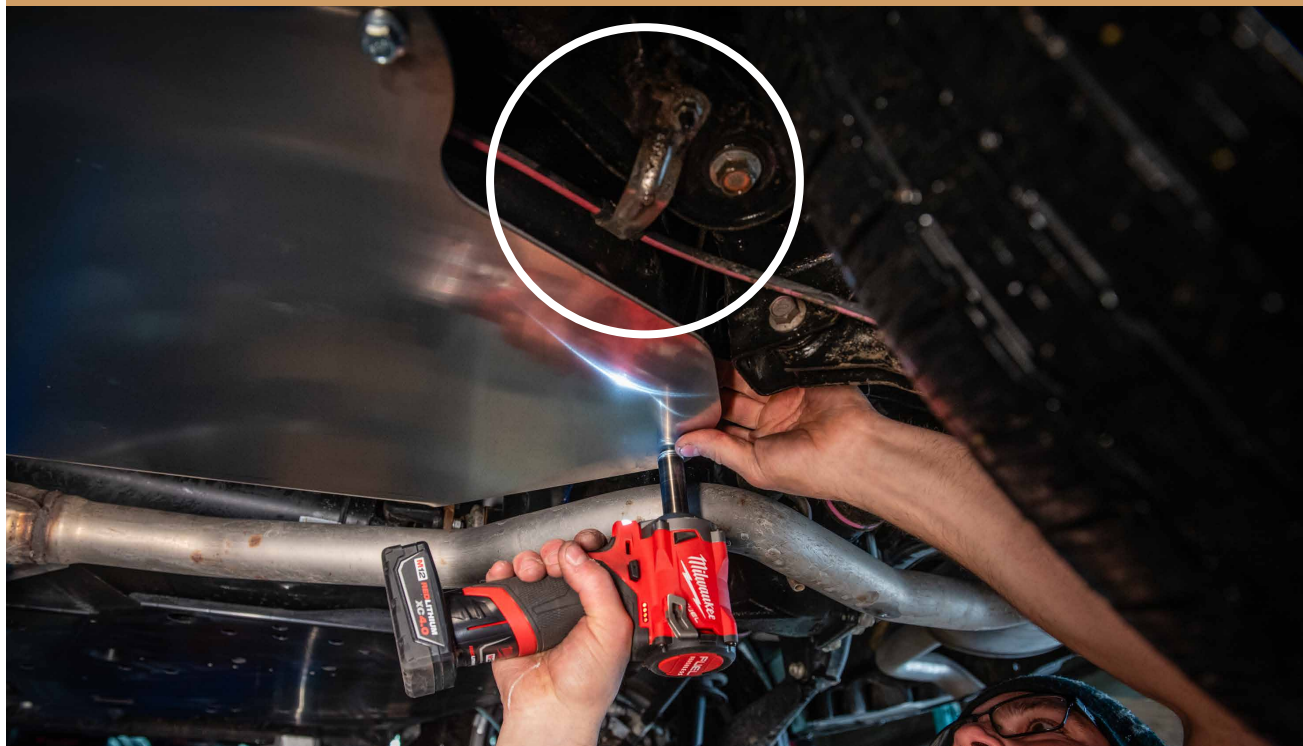






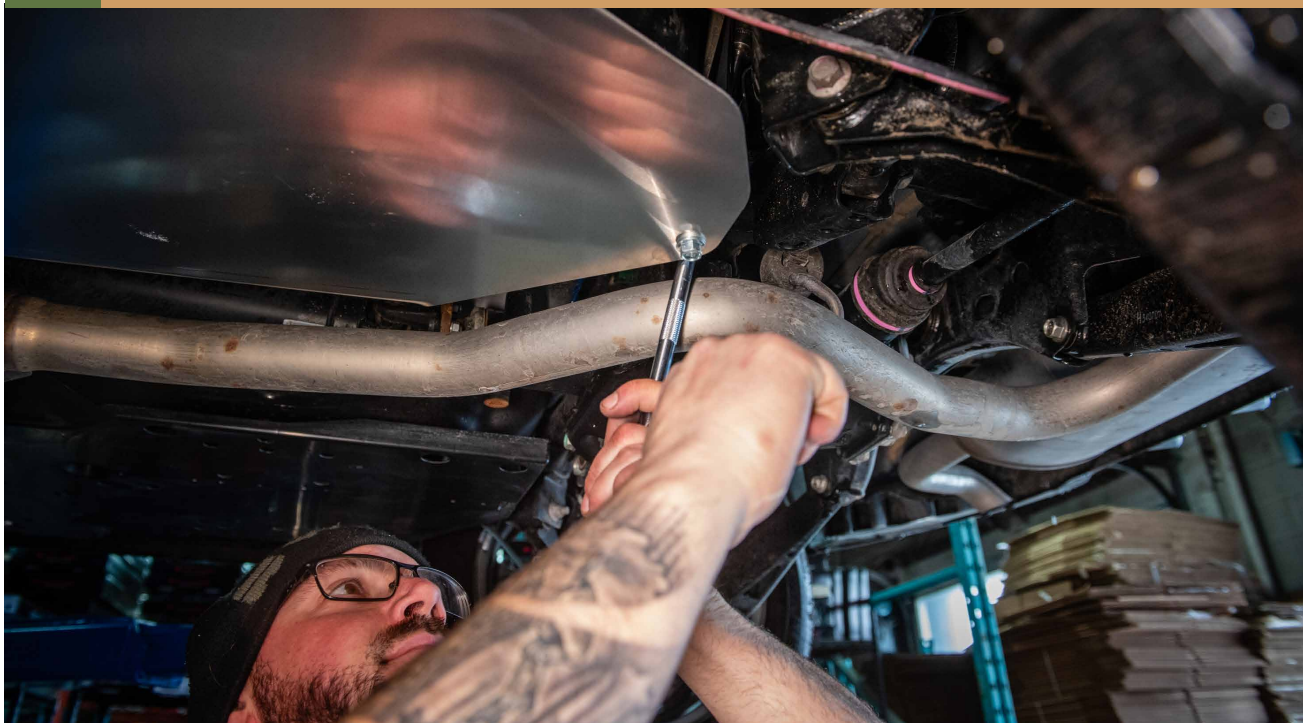


**\*\*YOU MIGHT NEED TO BEND THIS BRACKET UP IN SOME CASES TO NOT VIBRATE AGAINST THE SKID PLATE.**



**10**

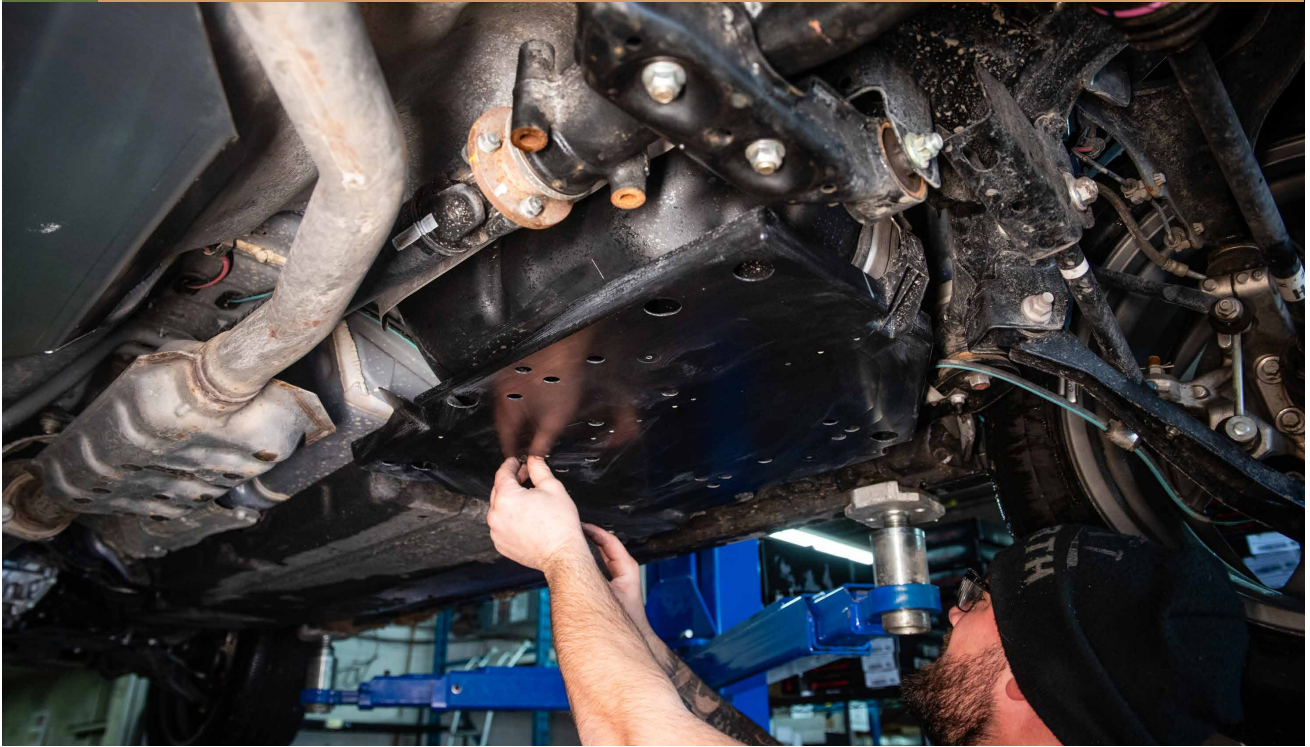
**YOU CAN NOW TIGHTEN THE BRACKET DOWN**





11

REPEAT STEPS ON OTHER SIDE





12

MAKE SURE ALL THE HARDWARE IS TIGHT



13

INSTALLATION COMPLETE





**You have completed the installation.  
Thank you for your interest  
in our products.**

**For all requests, information or  
assistance: Contact our team  
by phone at  
**1 (866) 562-1316****

**We are available Monday to Friday  
Between 8AM and 5PM (EST).**

**Or by email at :  
**SALES@LPAVENTURE.COM**  
**WWW.LPAVENTURE.COM****

**NOW, ENJOY THE RIDE!**