



-INSTALLATION- INSTRUCTIONS

▶ LP ADVENTURE MAIN SKID PLATE ◀

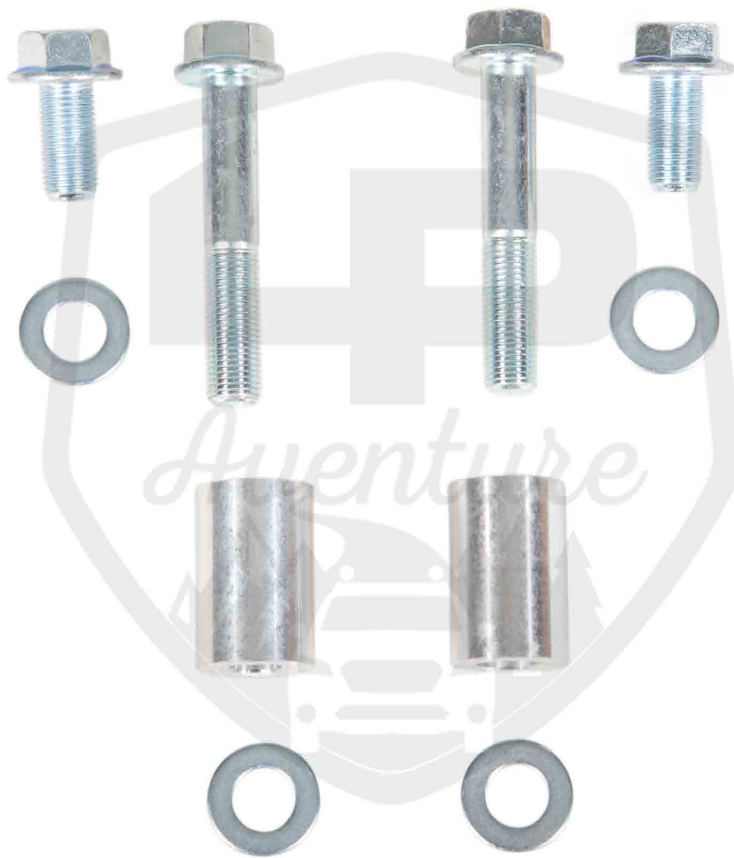
MAZDA CX-50 2023+

CONGRATULATIONS FOR YOUR NEW LP AVENTURE SKID PLATE!

If you have any questions or need assistance
during the installation please
contact our team. You
can find the information
on the last
page.



IN THE BAGS



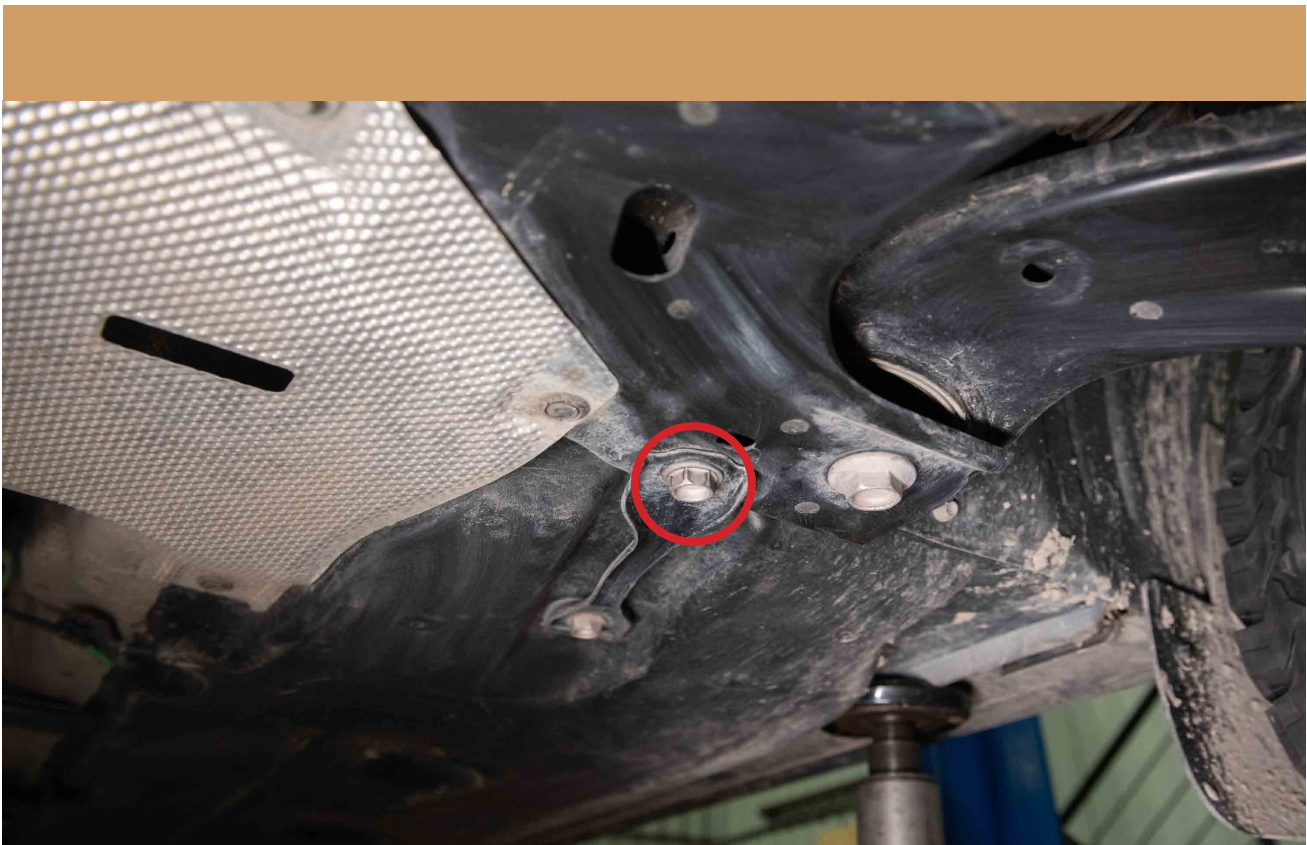


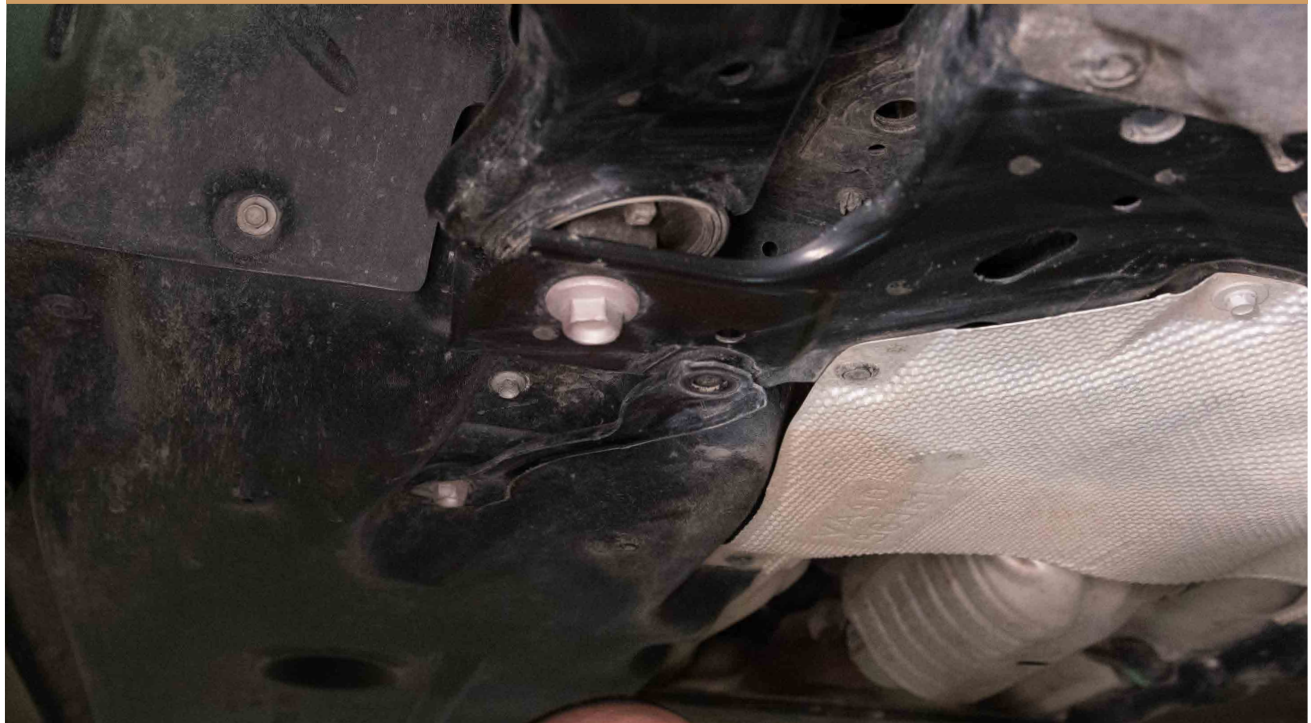
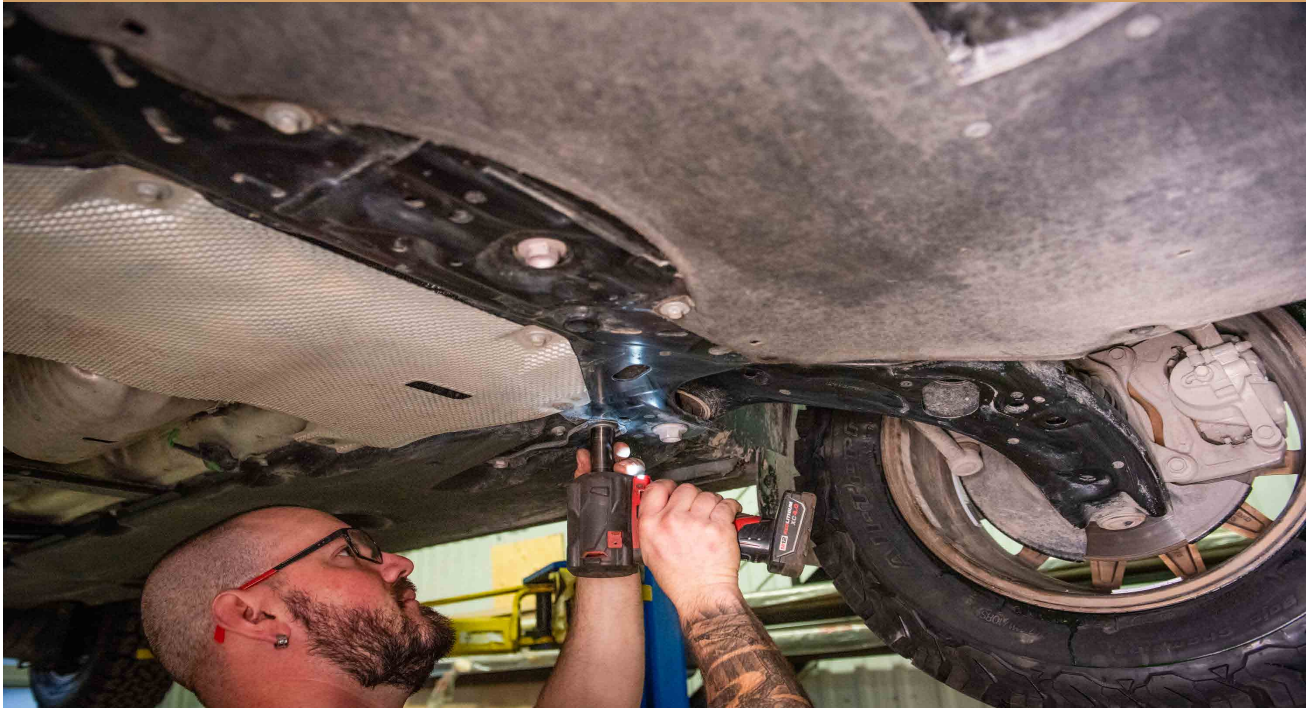
NECESSARY TOOLS

- We recommend the use of a lift
- Ratchet
- 17mm Socket

1

REMOVE TWO BOLTS





2

RAISE THE SKID PLATE INTO PLACE



3

WHILE HOLDING THE SKID IN PLACE, THREAD THE FRONT BOLTS IN.
*IF YOU HAVE THE OPTIONAL RALLY WASHERS, NOW IS THE TIME TO INSTALL

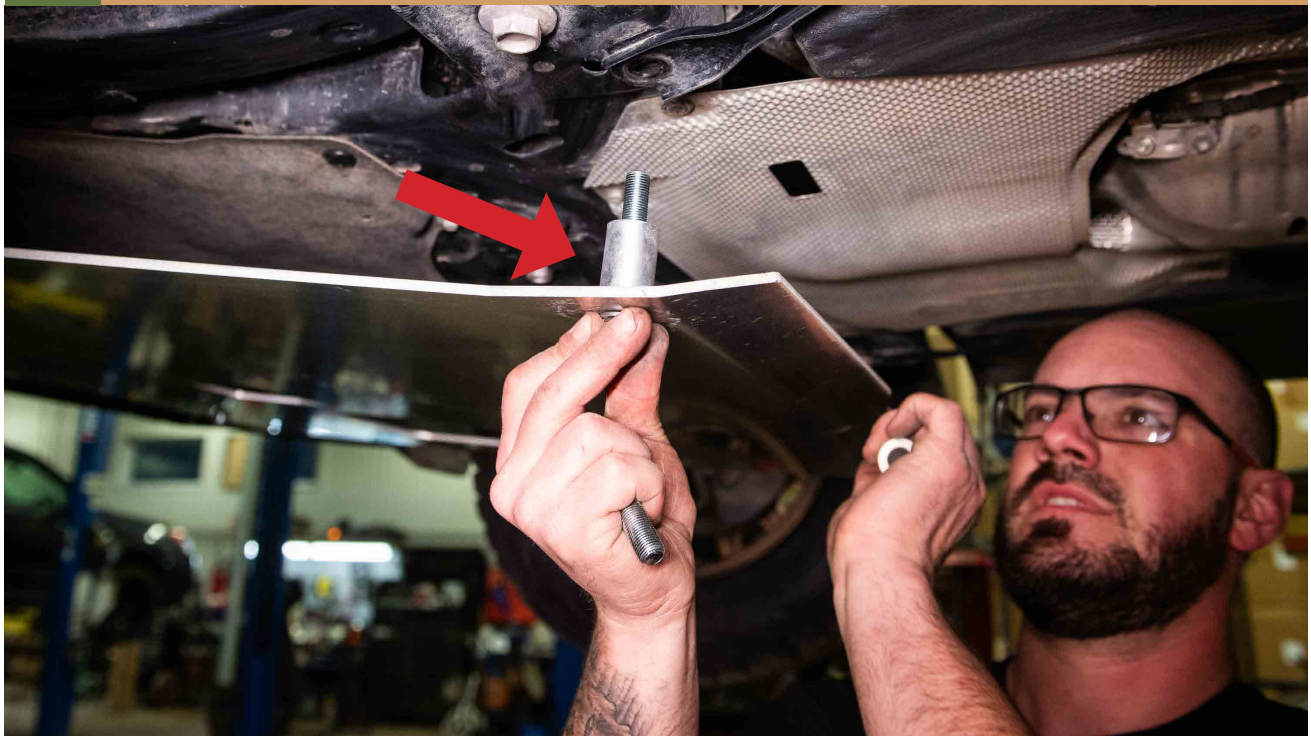


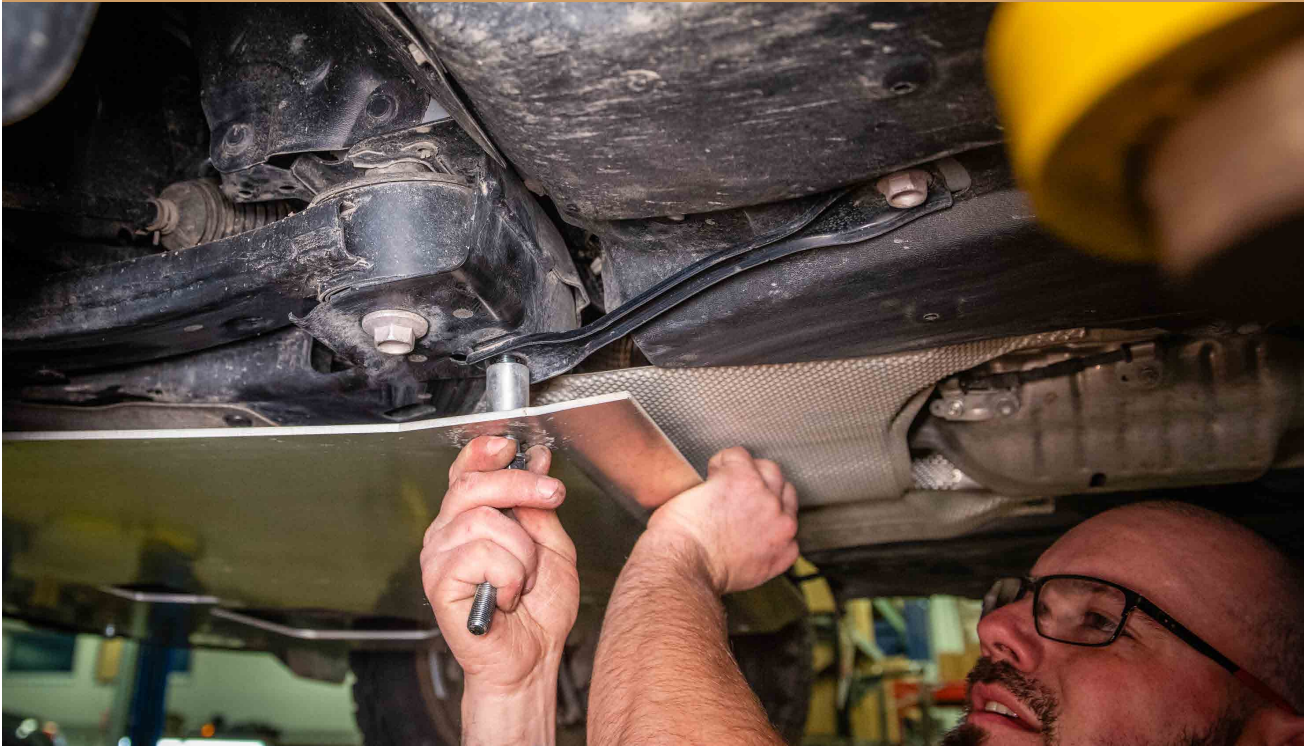
****IF YOU HAVE THE FULL ARMOR OPTION ON YOUR BUMPER GUARD, THE SKID PLATE GETS INSTALLED IN BETWEEN THE BUMPER GUARD AND FULL ARMOR****



4

FOR THE REAR OF THE SKID PLATE, USE THE SUPPLIED SPACERS
*IF YOU HAVE THE OPTIONAL RALLY WASHERS, NOW IS THE TIME TO INSTALL



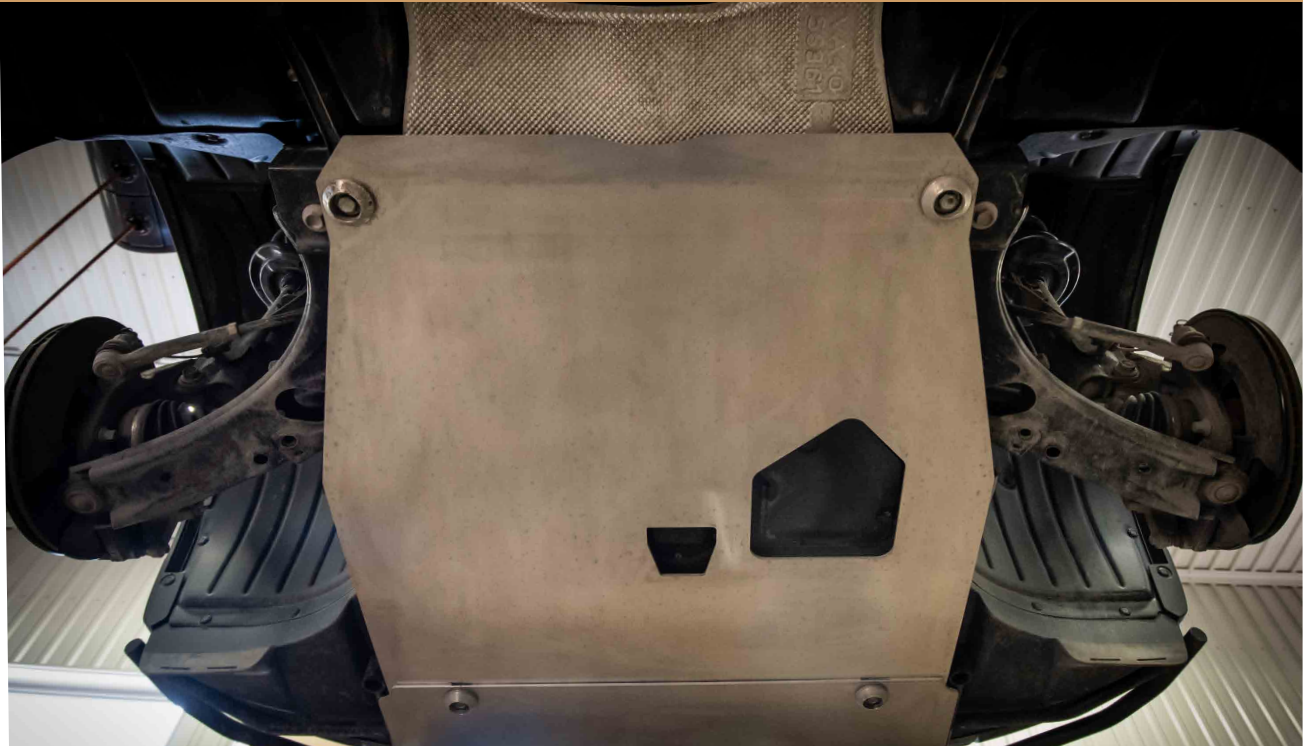


5

NOW TIGHTEN UP THE BOLTS



INSTALLATION COMPLETE!





NOTES:

****Tighten all the bolts to the manufacturer's specifications with a Torque Wrench****

**Double check your work.
and be sure to tighten
the nuts with a torque wrench.**

**Products warnings:
<https://lpaventure.com/pages/products-warnings>**

**Limited product warranty:
<https://lpaventure.com/pages/limited-product-warranty>**



**You have completed the installation.
Thank you for your interest
in our products.**

**For all requests, information or
assistance: Contact our team
by phone at
1 (866) 562-1316**

**We are available Monday to Friday
Between 8AM and 5PM (EST).**

**Or by email at :
SALES@LPAVENTURE.COM
WWW.LPAVENTURE.COM**

NOW, ENJOY THE RIDE!