



Glion Balto Electric Scooter User Manual



Glion Balto Electric Scooter User Manual

Thank you for purchasing a Glion Electric Scooter. For your safety and the reliable operation of this product, please carefully read this User Manual in its entirety AND VIEW INSTRUCTIONAL VIDEOS on our website BEFORE operating this product. The information in this manual is accurate as of the time of printing. To determine whether updates have been added, please visit our website at www.getglion.com for the latest version of the User Manual. The website also provides videos demonstrating how to fold, unfold, and operate the scooter. Your Glion Electric Scooter is covered by a warranty. For the specifics of this warranty, visit our website at www.getglion.com. Please register your Glion Electric Scooter at www.getglion.com for warranty coverage.

Please do not hesitate to contact us if you have any questions:

support@glion-scooter.com

www.getglion.com

Probity Cell LLC

701 4th Avenue, Suite 3

Holdrege, NE 68949



WARNING: THIS MANUAL CONTAINS IMPORTANT SAFETY, PERFORMANCE, AND SERVICE INFORMATION. Read it before you take the first ride on your new Glion Electric Scooter, and keep it for reference. Whenever you ride this motorized scooter, you risk death or serious injury from loss of control, collisions, and falls. **THIS IS NOT A STUNT VEHICLE, AND SHOULD NOT BE USED AS SUCH.** When riding, use common sense and good judgment: Always wear a helmet. Ride on legal surfaces. Ride at a speed you can control. Be alert and prepared for changes in your riding surface. Never ride intoxicated or in any other manner that impairs your ability to drive this scooter safely. Yield to pedestrians at ALL TIMES!



TABLE OF CONTENTS

SAFETY SPECIFICATIONS AND OWNER OBLIGATIONS	3
GLĪON BALTO MODEL X1 PARTS DIAGRAM	7
OPEN BOX INSTRUCTIONS.....	8
UNFOLD/FOLD INSTRUCTIONS.....	8
SEAT, LUGGAGE RACK AND BASKET INSTALLATIONS	13
OVERVIEW OF YOUR GLĪON BALTO ELECTRIC SCOOTER.....	15
OPERATING YOUR GLĪON ELECTRIC SCOOTER.....	16
BATTERY AND CHARGER	17
DOLLY FEATURE	19
GLĪON ELECTRIC SCOOTER MAINTENANCE	20
GENERAL TROUBLESHOOTING	21
CLEANING, STORING, AND SERVICING	22
PRODUCT REGISTRATION.....	22
GLĪON LIMITED WARRANTY	23

SAFETY SPECIFICATIONS AND OWNER OBLIGATIONS

1. **LEGAL RIDING LOCATIONS:** Always check and obey local laws or regulations, which govern where you can legally operate the scooter. Only operate the scooter where legally permitted, and do so with caution. The scooter can only be operated on private property unless it is street legal in your jurisdiction. While many state laws approve its legal use in bike lanes, some states do not consider a motorized scooter street legal. Please familiarize yourself with the applicable laws and regulations for electric scooters where you plan on riding it. Keep safely away from cars and motor vehicle traffic at all times.



WARNING: Many states require specific safety devices. It is your responsibility to familiarize yourself with the laws of the state where you ride and to comply with all applicable laws, including properly equipping yourself and your electric scooter as the law requires. Observe all local electric scooter laws and regulations. Observe regulations about electric scooter lighting, licensing of electric scooters, riding on sidewalks, laws regulating bike path and trail use, helmet laws, and special electric scooter traffic laws. **IT'S YOUR RESPONSIBILITY TO KNOW AND OBEY THE LAWS.**

2. **SAFETY GEAR:** Always wear an approved safety helmet (with chin strap securely buckled), gloves, elbow and knee pads, appropriate shoes (lace-up with rubber soles), and bright or reflective clothing while operating this scooter.



WARNING: Failure to wear a helmet while riding may result in serious injury or death.

3. SAFE OPERATING CONDITIONS:

- Do not operate this scooter in traffic.
- Do not operate this scooter on surfaces that are wet, frozen, oily, or unpaved.
- Never carry passengers or objects that can hinder your ability to safely operate this scooter.
- Never use headphones or a cell phone to talk or text while riding.

4. **PREGNANT OPERATORS:** Pregnant women should not operate this scooter.

5. **DRIVING IMPAIRED:** Never use alcohol or drugs before or while operating this scooter. The use of such hinders your ability to safely operate the scooter.

6. **STUNTS:** This scooter is not designed for stunts or tricks and should not be used as such. High speeds, jumps, wheelies, and other trick maneuvers are dangerous and can result in loss of control, accidents, and injury/death to self or others.

7. **HILLS:** When climbing hills, you may need to manually kick the scooter forward to assist the motor and maintain your speed depending on the steepness of the hill and rider weight. **WHEN DESCENDING HILLS, CAREFULLY CONTROL YOUR SPEED!** The scooter has a short wheel base. It may become unsteady at excessive speeds. Avoid excessive speeds that can be associated with downhill rides. The brake is a disc brake. Always check the braking before each ride. Always check the brake BEFORE beginning to go downhill. Never go downhill without brake being enabled.



WARNING: Failure to control your speed when descending a hill can result in serious injury or death.

8. **GUEST USE:** Never permit a guest to use this scooter unless the guest has read the user manual and all the warnings. Always provide a guest with helmet, elbow pads, and knee pads before permitting the guest to operate the scooter. Never allow more than one person at a time to ride the scooter.



WARNING: This product should not be used by persons unwilling or unable to take responsibility for their own actions.

9. **INSURANCE:** YOUR INSURANCE POLICIES MAY NOT PROVIDE COVERAGE FOR ACCIDENTS INVOLVING THE USE OF THIS SCOOTER. TO DETERMINE IF COVERAGE IS PROVIDED, CONTACT YOUR INSURANCE COMPANY OR AGENT **BEFORE** USING THE SCOOTER.

10. **OPERATOR AGE:** Do not allow anyone under the age of 16 to operate this scooter. This scooter is designed for operation by and the transport of only one person age 16 or older.

11. **SURROUNDINGS:** Ride your scooter in a controlled environment away from vehicles, obstacles, and other hazards. Never operate the scooter near steps or swimming pools.

12. **INTENDED USE:** This scooter is not designed or intended for stunt tricks, including but not limited to jumps, wheelies, and curb grinding. Keep both hands on the handlebar and both feet on the standing board while operating the scooter.

13. **SPEED:** The scooter's maximum speed is approximately 28 km/h (17 mph). For your safety, limit the speed to not more than 20 km/h (13 mph), and be careful to control your speed when descending hills. The scooter has a short wheel base and can become unsteady at excessive downhill speeds.

14. **VISIBILITY:** Do not ride your scooter at night or in conditions of poor visibility. If riding in such conditions is unavoidable, limit your speed to 15 km/h (10 mph) or less and always turn on the scooter lighting. Wear reflective clothing or vest. There are aftermarket bicycle accessories such as headlamps and reflectors that can be mounted to the scooter or worn by the rider that will enhance safety.



WARNING: Riding at dawn, dusk, or at times of poor visibility without a lighting system that meets state and local laws, and without approved reflectors, is illegal, dangerous, and can result in serious injury or death.

15. **TEMPERATURE:** The scooter battery is designed to have operating environmental temperature range. Riding temperature is between -10°C (14 °F) and 40°C (104 °F). Charging temperature is between 0°C (32 °F) and 40°C (104 °F). Storage temperature is between -10°C (14 °F) and 40°C (104°F). Do not operate the scooter outside of the designed temperature range.

16. **WEATHER CONDITIONS:** Avoid riding in wet or icy conditions. Stop the scooter and walk it across rough or slippery road conditions.



WARNING: Wet or icy weather impairs traction, braking, and visibility for riders and other vehicles and pedestrians sharing the roads. The risk of accident is dramatically increased in wet or icy conditions.

17. **SURFACE CONDITIONS:** The scooter is intended for use on hard, flat, dry paved surfaces without loose debris such as sand, leaves, rocks or gravel. Wet, slick, bumps, uneven or rough surfaces may impair traction and contribute to possible accidents. **Do not ride your scooter in mud, gravel, sand, ice, or water. Watch out for potential obstacles that could catch your wheel or force you to swerve suddenly or lose control. Avoid sharp bumps, drainage grates and sudden surface changes.** Stop the scooter and carefully walk it across rough or slippery road conditions.

18. **WATER RESISTANCE:** Although some water resistance measures have been made, riding the scooter through standing water, rain, wet or muddy conditions runs the risk of severely damaging it. Do not immerse the scooter in water or directly spray the scooter when cleaning. When parked outside where rain is possible, cover the handlebar controls with water resistant materials to protect the electric controls.

19. **SAFETY WHEN NOT RIDING:** When the scooter is not being used for riding, place it in a safe stable and secured environment, keep it away from fire, water and other hazards. When the scooter is in its upright vertical self-standing mode, especially in moving public transportation or other crowded space, pay attention to its stability as accidental tip over could cause personal injury as well as damage to the scooter. **Always hold the handle bar to prevent it from tipping over and falling to the ground.**

20. **MAXIMUM RIDER WEIGHT:** Maximum rider weight is 255lb/115kg.



WARNING: The scooter is not intended for use at elevations greater than 2000m above sea. Prolonged exposure to UV rays and rain may damage the enclosure materials. Store indoors when not in use

GLĪON BALTO MODEL X1 SPECIFICATIONS

Size	Unfolded Dimension	122x112x61cm (48"x44"x24")
	Folded Dimension	122x61x38mm (48"x24"x15")
	Net Weight	17 Kg (38 lbs)
Performance	Maximum Load	115 KG (255 lbs)
	Luggage Rack Load	12 KG (26lb)
	Top Speed	28km/h* (17 mph)
	Range	32km* (20 mile)
Battery	Voltage	36V
	Type	Li-ion Battery
	Capacity	10.5AH
Motor	Type	Brushless DC Motor
	Rated/Peak Power	250/750W
	Rated Voltage	36V
Charger	Input Voltage	100-240V
	Charging time	5 h with standard 2A charger 3 h with optional 3A charger

* Top speed and range per charge depends on rider weight, wind speed, temperature, riding style, riding surface, battery condition, and other factors. Actual top speed and range per charge may vary.

GLĪON BALTO MODEL X1 PARTS DIAGRAM



Scooter Side View Unfolded



Scooter Package Contents

OPEN BOX INSTRUCTIONS

Thanks for choosing Glion Balto. After you open the box, please do the following:

1. **Check contents: standard package should include: one folded scooter, one basket, one luggage/vertical standing rack, one battery, two handle grip, rear view mirror (left), seat post, seat, charger, manual and tools.**
2. **If you would like to charge battery while learning the rest, please go to P17 to learn how to charge the battery.**
3. **Register warranty on getglion.com immediately. Serial number is located on the front of seat post base. Watch online video instructions.**
4. **Please follow instructions below and online video to unfold the scooter.**
5. **Please follow instructions below and online video to install handle grip, mirror and battery.**
6. **Please follow instruction below and online video to install seat, luggage rack and basket if you wish to. You can ride scooter in a stand up fashion without these accessories.**
7. **Please pay particular attention to warnings in the manual and on the warning tags.**
8. **Practice riding in Eco(slower) mode in a controlled safe environment with protective gear.**
9. **Please keep the packaging material for future shipping purposes.**

UNFOLD/FOLD INSTRUCTIONS

To learn how to fold/unfold this scooter, it's best if you could watch the video instruction first. For video instructions, please visit our website at www.getglion.com. We encourage you to view the video instructions prior to unfolding/folding operation to avoid damage to your Glion scooter.

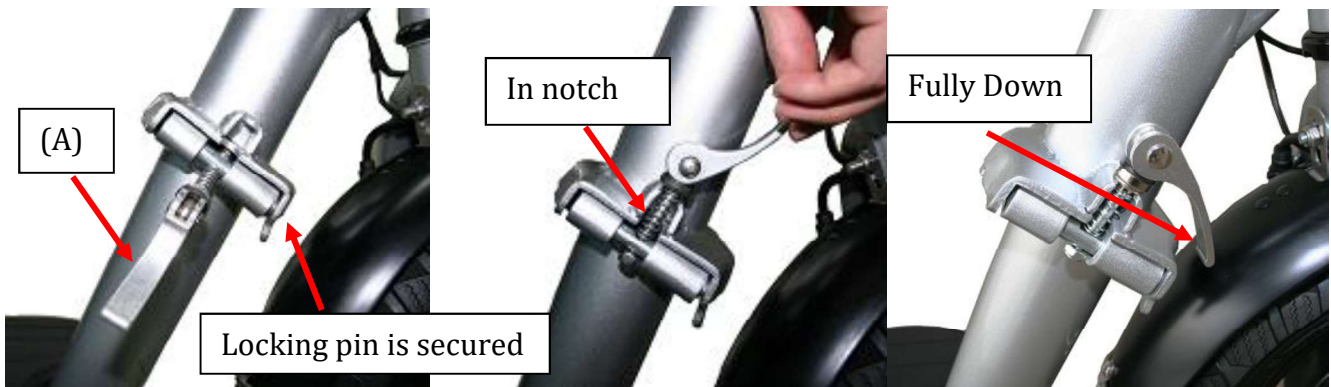
Unfolding your scooter and installing handle grips, mirror and battery



Step 1. Lay the folded scooter on ground or floor with head lamp facing you. The scooter handlebar is locked to the rear fork via the folding hook. Push/pull the hook release trigger towards the direction of handlebar to allow the folding hook to come out and the handle bar is unlocked from the rear fork.



Step 2. Hold the horizontal handle bar and lift it up to its **highest position** while both wheels are on the ground. At this point, the standing board is tilted and the folding box at the neck is separated. **Put one foot on the driver side (the side close to you)** of the standing board and step with your body weight. You should hear a click at the folding box, which means the locking pin is inserted in its notch and the folding box should be closed. **MAKE SURE THE LOCKING PIN IS IN ITS NOTCH AND SECURE TO AVOID SCOOTER FOLDING DURING OPERATION WHICH WILL CAUSE SERIOUS INJURY OR DEATH.**



Step 3. Rotate the folding release lever (A) up so it gets into the notch in the upper section of the folding box. **MAKE SURE THE PIN WITH A SPRING IS IN THE NOTCH AND SECURE TO AVOID SERIOUS INJURY OR DEATH.** Push the release lever (A) down fully to secure the folding box. **This step ensures the folding box is locked. Failure to fully push down the release lever may cause the fold box to separate during operation and result in serious injury or death.**



Step 4. After scooter is unfolded, bring down kickstand to have the scooter stand in unfolded position and install the handle grips on both sides of the handle bar. First use the provided Allen wrench to loosen the bolt (B) at the bottom side of the hand brake to adjust the handbrake position for normal operation. Make sure you tighten the bolt after you adjust the hand brake position.



Step 5. Install the handle grips by inserting the handle grips into the handle bar and securely tighten the bolts inside using provided Allen wrench as shown in the pictures above. Once it's tightened, handle grip should be securely attached to handle bar. **Fail to securely tighten the hand grip will result in serious injury or death.** If provided Allen wrench does not give enough leverage to tighten the bolt inside, add another wrench to the end of the Allen wrench to add leverage. Also tighten the bolts on the outside of the handle grips.

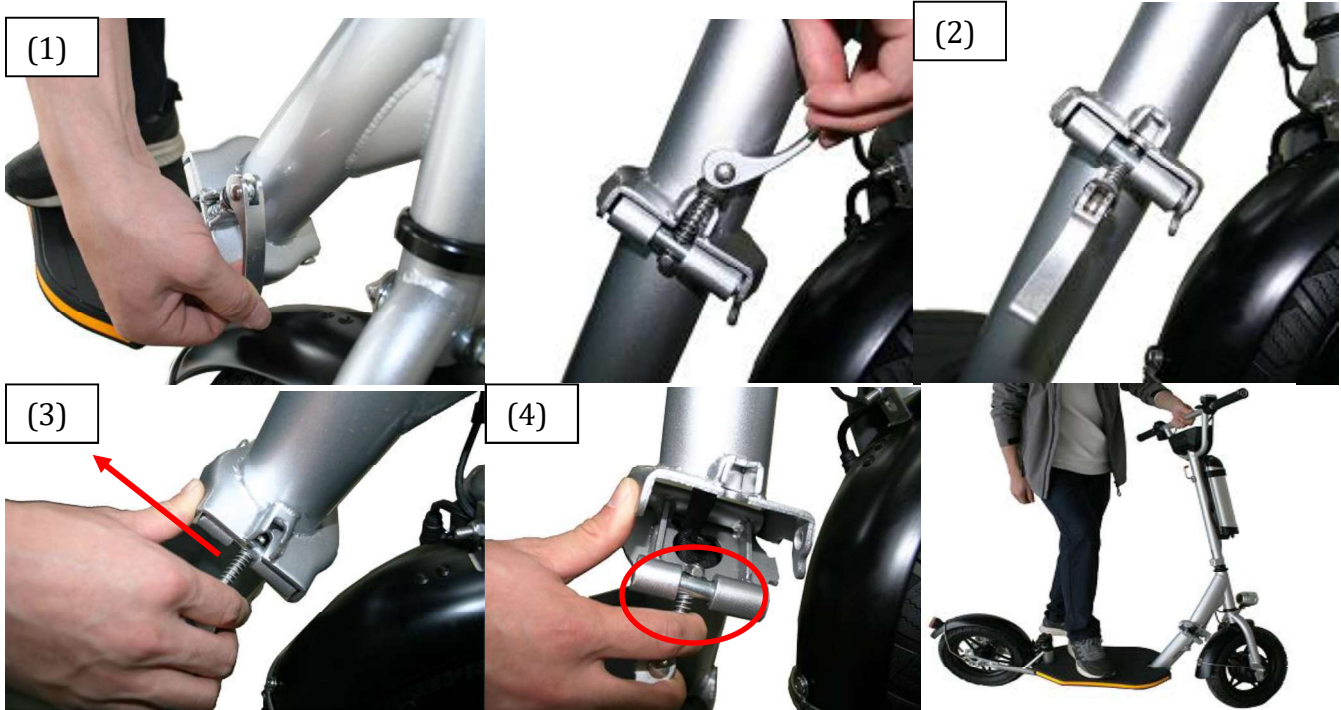


Step 6. Install the review mirror on left side. Then insert the mirror as shown above into the handle grip. Use the provided Allen wrench to tighten the mirror bolt. The mirror is foldable and adjustable as shown. Install the provided handle grip end cap on the side with no mirror.

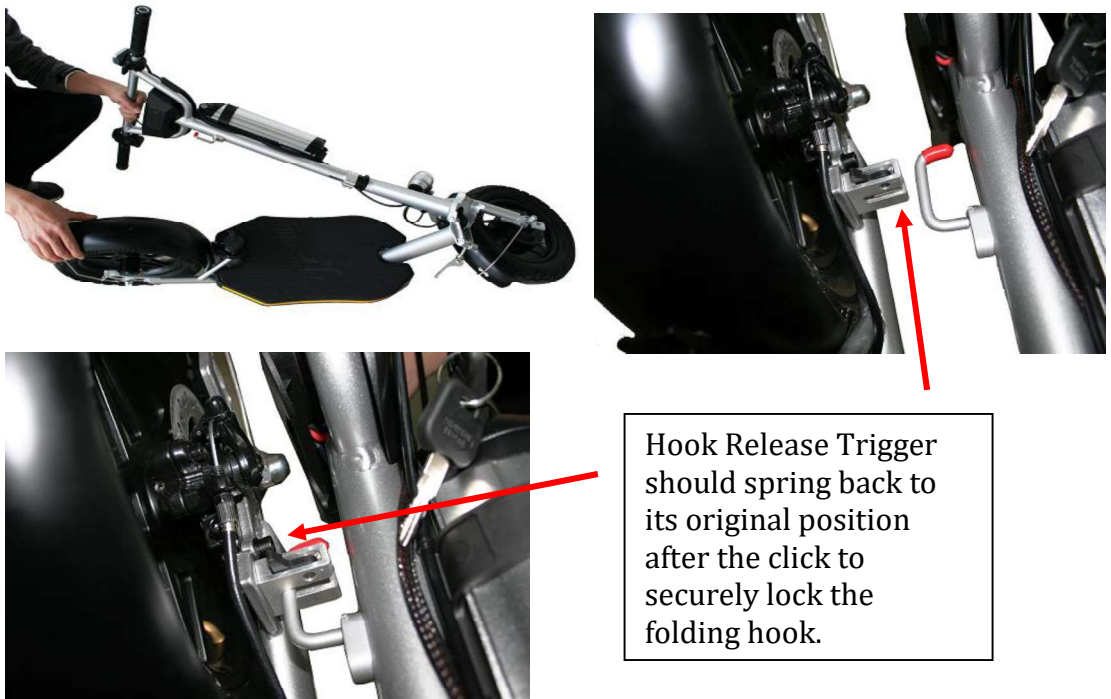


Step 7. Install the battery onto the battery docking station by pressing the bottom of the battery onto the pins on the docking station (1) and then lean the upper side of the battery into the upper side of the docking station. **Notice the space and fitting in upper section of the docking station could be tight for a new battery.** Just lift the docking station cap up a little (2) so that the battery can slide and fit into the docking station. In order to make sure the detachable battery connection is tight and safe for road bumps, Balto has multiple designs. After sliding the battery onto its docking station, tighten the strap around the battery and lock the battery using provided keys. Please **NOTE: we provide 2 keys for each battery, make sure you keep them in a safe place. Make sure you tighten the straps every time you mount the battery. Fail to lock and strap the battery could result in battery falling out of docking station and seriously damaging the battery, which could result in fire and explosion.**

FOLDING YOUR SCOOTER:

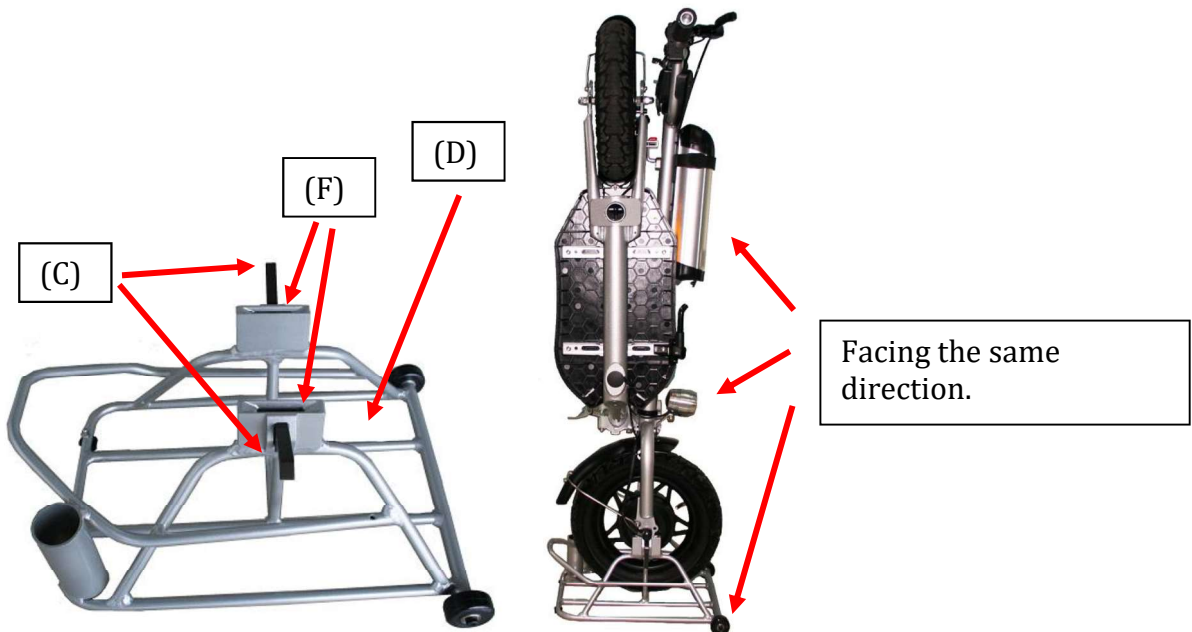


Step 1. Make sure the scooter is off. The LED battery indicator screen on the right handle grip should not be lit. Fold the rear view mirror. Kick up the kickstand and put one foot on the standing board. Use left hand to hold scooter handle bar and use right hand to lift the folding release lever (1) and move it out of its notch (2). Hold the folding lever pin and bring it towards you so that the pin will come out of its notch (3) and the folding box gets unlocked. Do not let go of the folding lever pin until the folding box gets separated. Keep in mind that your foot must be on the standing board and your left hand must hold the scooter handle bar so that your body weight on the standing board will hold the scooter down while the upper folding box could be separated when your left hand's force on the handle bar helps to separate the upper folding box from the lower part of the folding box. Please refer to our online video instructions for further illustration.

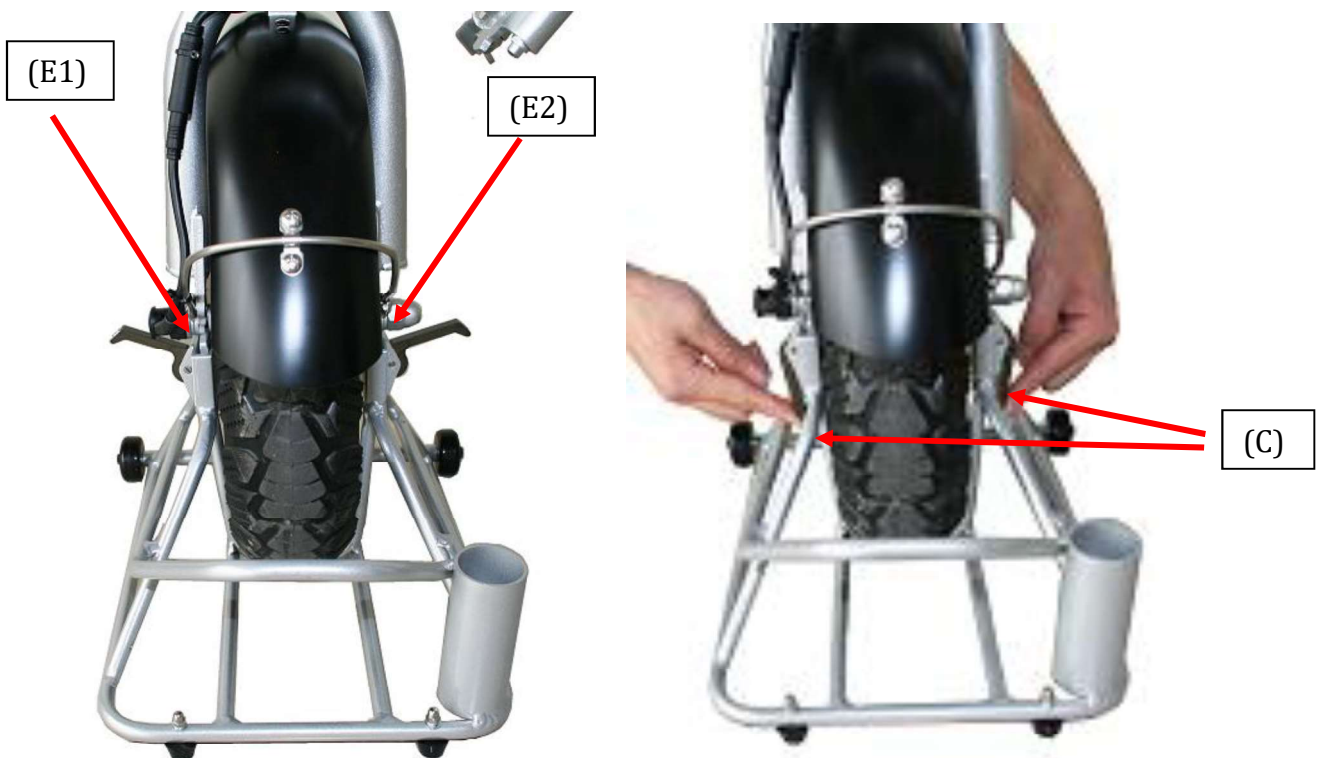


Step 2. Fold the handlebar and bring it down SLOWLY to the driver side of the rear wheel. The front wheel will rotate 90 degrees and the battery & headlight should face the right side of the scooter. The passenger side of the board would lean on the floor. Hold the handlebar and rear

wheel and bring the folding hook into its locking notch. **You should hear a click** and the hook release trigger should go back to its original position to lock the folding hook. **Double check to make sure that the handle bar is securely locked.** Failure to securely lock the handle bar could cause the scooter to unfold and fall resulting in significant damage to the scooter when scooter is in its vertical dolly position.



Step 3. Put the luggage/dolly rack down with dolly wheels on the floor. Lift UP both rack locking levers (C) so they are in unlocked position. Hold the FOLDED scooter's handlebar and bring it up vertically so that the front wheel is on the ground and rear wheel is up in the air. The purpose is to get ready to put the scooter onto the luggage/dolly rack. Please notice that the battery or headlamp must face the same direction. Use both hands to hold the folded scooter and roll the front motor wheel into the rack via the rack opening (D) on the side with dolly wheels.

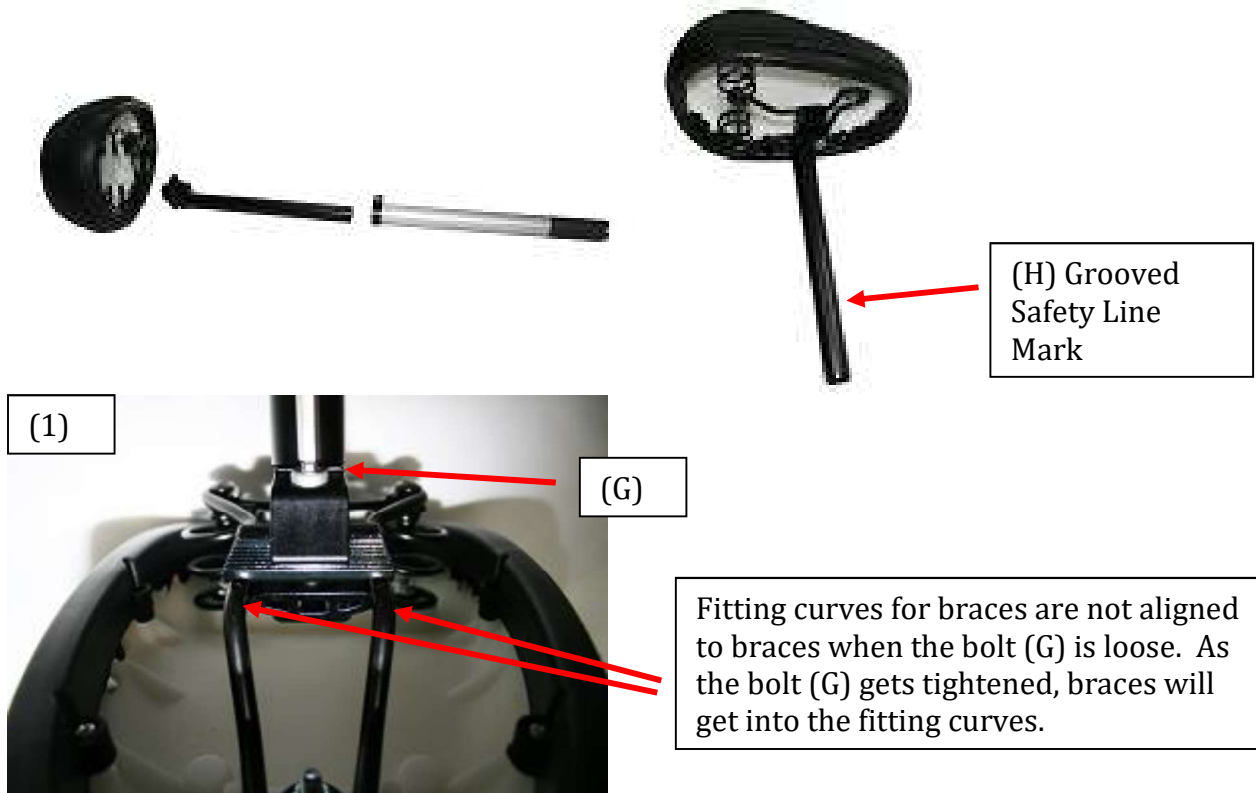


Step 4. Hold the handle grips using both hands and lift the scooter up so that the tips of the front fork (E1) & (E2) are right above the resting slots (F) of the luggage/dolly rack. Put down the scooter so that its front fork tips (E1 & E2) are inserted into the resting slots (F) of the rack. (TIP: to lower the weight of the scooter and make it lighter to lift, you can take off the detachable

battery.) **Once the scooter front fork tips are FULLY inserted, you MUST press down both rack locking levers (C) to securely lock the scooter into the rack. Failure to do so will cause the scooter to become separated from the dolly rack when in use.** To take the scooter out of the rack, reverse above steps. **Please do NOT forget to lift the rack locking levers to unlock the rack first.**

SEAT, LUGGAGE RACK AND BASKET INSTALLATIONS

INSTALL SEAT:



Step 1: The seat installation has 3 components: seat, upper seat post (black) and lower seat post (Silver). Attach the black seat post to the seat as shown in (1) with the seat post clamped to the seat base. You may put the bolt (G) either towards front or the back of the seat, which results in different tilt angles and positions for the seat. Tighten the bolt (G) using provided Allen wrench. Note you can adjust the seat position and angle by loosening the bolt. Make sure you tighten the bolt.



Step 2: Insert the upper seat post into the lower seat post at appropriate height. **NOTICE: do not have the safety line (H) of the upper seat post positioned above the lower seat post quick release lever. It must be lower than the quick release and inside of the lower seat post. Otherwise, it will cause the upper seat post broken off the seat post and result in serious**

injury or death. Make sure you tighten BOTH quick release locks (G) for the seat post. Failure to lock them could result in unintended change of riding position, potentially causing accidents with injury or death.

INSTALL LUGGAGE RACK



Place the luggage rack above the rear wheel as shown above. Have the rack supports from both sides of the rear fork fully inserted into the resting slot (F). Make sure the tip of the rack front (I) is fully rested on the rack support notch attached to the seat post base. Close both rack locking levers (C) fully to lock the rack onto the scooter. **When you remove the rack, you need to unlock the levers(C) first.**

INSTALL BASKET



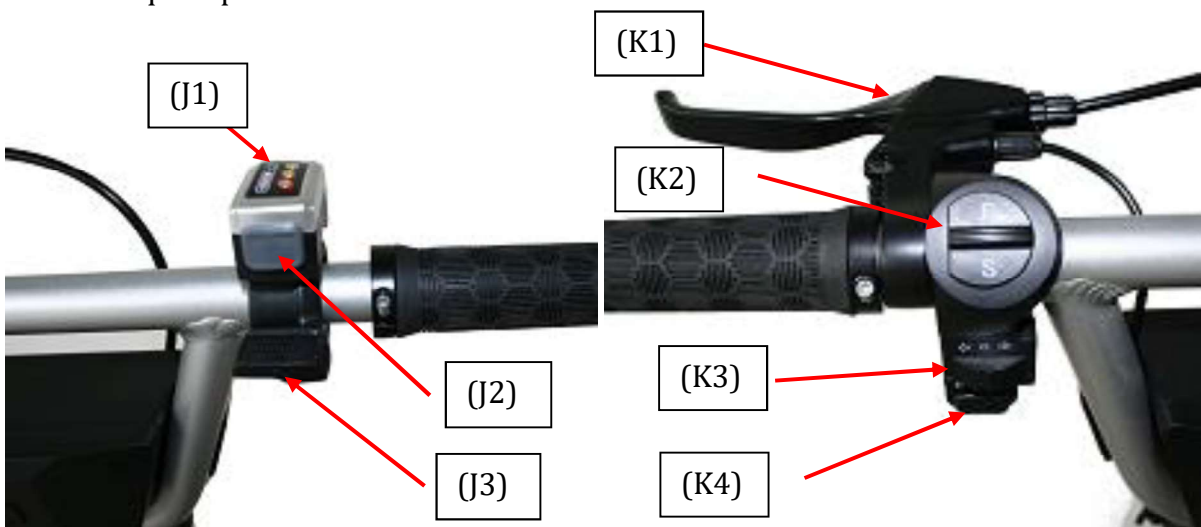
Place the basket on top of the luggage rack and secure each of the 4 velcro straps as shown above. **Note: Do NOT put more than 26lb or 12kg load into the basket. NEVER put child or any person into the basket or on the luggage rack. Always secure the basket before riding the scooter**

OVERVIEW OF YOUR GLĪON BALTO ELECTRIC SCOOTER



WARNING: For your safety, please take the time to familiarize yourself with the handlebar controls and with its movements and balance before attempting to ride your scooter with the motor engaged. Please see our demonstration videos on our website: www.getglion.com.

1. **Powering On/Off (J2):** To turn the scooter on, you must press the GRAY on/off switch ONCE as shown below (F). The LED display is lit when the power is on and dark if off. The scooter rear light is turned ON when the power is turned on. The scooter will automatically turn off after five minutes of non-use. To turn off the power of the scooter, you must press and hold the on/off switch for 2 seconds and then release it.
2. **Battery indicator (J1):** When the scooter is turned on, the battery indicator screen is turned on. Green means full or close to full while Red means almost empty. When green light is off with motor off, battery has about 20% left; when the yellow light is off with motor off, it has 5% left. **Do not check the battery indicator lights when operating the scooter. The battery indicator is only accurate when the motor is not engaged.**
3. **Head Light/Rear Light On/Off (J2):** The scooter rear light is always ON when the power is turned on. To turn the headlight and side lights on or off, you must first power on the scooter. While the scooter power is on, quickly press the on/off switch once, the headlight and side lights should be turned on. Flash press a second time, the lights will be turned off. Again, to turn off the scooter, press and hold for about two seconds. Turning the lights on or off is a quick press.



4. **Accelerator (J3):** The further you press down the thumb throttle accelerator, the more energy you will release to the motor.
5. **Speed mode (K2)** controls the top speed. For eco mode (switch to S), top speed is 18kmh or 11mph. For turbo mode (switch to F), top speed is 28kmh or 17mph. Note: during riding, if the speed mode is switched from F to S, the actual cruising speed might exceed the top speed limit of eco mode, which will cause the accelerator not responding until cruising speed is below top speed limit of eco mode. This is normal.
6. **Turning signal (K3)** controls the side lights on the side of standing board. When scooter is powered on, **switch (K3)** will have the corresponding side lights flashing to signal turning. After turning, remember to switch it to the middle neutral position to turn off the turning signal.
7. **Horn (K4):** Activate the horn by pressing once.
8. **Hand brake (K1):** When hand brake is squeezed, motor electricity will be cut and rear disc brake will be actuated. Rear light will be flashing when the hand brake is squeezed.

9. **Kickstand:** The kickstand (I) is located in the middle underneath the standing board on the left side. Be sure to always lift the kickstand before beginning operation of the scooter.



WARNING: For your safety and for the safety of others, please take the time to practice accelerating, braking and familiarize yourself with the scooter's braking distance in an open and safe area before taking your scooter out into the general environment. IT IS YOUR RESPONSIBILITY TO MAINTAIN CONTROL OF YOUR SCOOTER AT ALL TIMES!

OPERATING YOUR GLĪON ELECTRIC SCOOTER

Getting Ready:

1. Fully charge the battery. (See Battery Charging Instructions Below).
2. Choose a controlled environment away from vehicles, obstacles, and other hazards for riding. **Even if you have experience with motorized scooters, vehicles, bicycles, etc., you must familiarize yourself with the function, handling, braking distance, performance, and safety of this scooter in a safe and controlled environment.**
3. Always check and obey all local laws and regulations. *Your insurance policies may or may not provide coverage for accidents involving the use of this motorized scooter. To determine if coverage is provided, check with your insurance company or agent. Do not assume your existing insurance policies provide coverage.*
4. Unfold the scooter (See Unfolding Instructions above).
5. Raise the kickstand.
6. Complete a final roadworthiness safety check before operation.
 - a. Make sure folding mechanism, quick releases, wheel lug nuts, other nuts, bolts, fasteners, etc., are secure.
 - b. Make sure tire is inflated.
 - c. Inspect the frame, fork and handlebars for cracks or broken connections.
7. IF RIDING YOUR ELECTRIC SCOOTER FOR THE FIRST TIME, FAMILIARIZE YOURSELF WITH ITS MOVEMENTS AND BALANCING ON IT BY **MANUALLY OPERATING IT WITH THE POWER TURNED OFF.** IN A SAFE AND CONTROLLED ENVIRONMENT, ON A FLAT SURFACE, FACING FORWARD, WITH BOTH HANDS SECURELY ON THE HANDLEBAR GRIPS, PLACE ONE FOOT TOWARDS THE FRONT OF THE STANDING BOARD AND THE OTHER FOOT ON THE GROUND. USE THE GROUND LEG TO MANUALLY PUSH OR KICK THE SCOOTER FORWARD. ONCE YOU GAIN SOME SPEED, GENTLY PLACE THE GROUND FOOT ON THE STANDING BOARD BEHIND OR NEXT TO YOUR PIVOT FOOT. REPEAT THE SAME MOVEMENTS ONCE THE SCOOTER SLOWS DOWN TO KEEP IT PROPELLED FORWARD. RIDING THE SCOOTER WITHOUT THE POWER ENGAGED DOES NOT DAMAGE IT. BRAKE WHEN NECESSARY. **DO NOT OPERATE THE SCOOTER WITH THE POWER TURNED ON UNTIL YOU FEEL CONFIDENT MANUALLY PROPELLING THE SCOOTER.**

Riding the Scooter Powered without Sitting Down:

1. Raise the kickstand.
2. Press the power button on the right to turn on the scooter. The battery indicator screen on the right handle grip should be lit when the scooter is turned on.
3. Set the speed mode to S.
4. Adjust the rear view mirror so that you can see traffic from behind.
5. With both hands on the handlebars and one foot on the standing board and one foot on the ground, manually push the scooter forward and slowly press the accelerator. **The**

scooter is front wheel drive. Be sure to have your center of gravity follow the scooter movement.

6. As the motor begins to slowly propel the scooter forward, place the foot which pushed off the ground onto the riding board behind your front foot. Press the thumb control more to increase speed when feeling comfortable and safe.

Stopping the Scooter:

1. Squeeze the hand brake to begin the braking process. The harder and faster you squeeze, the quicker the stopping process. The brake is located in the rear wheel. In a safe, controlled environment, please familiarize yourself with the braking distance of the scooter at various speeds before operating near intersections, pedestrians and other obstacles.

Riding the Scooter Powered While Sitting Down:

1. Check the seat to make sure it's at appropriate height. You need to make sure you can put your feet on the ground at any time in case of emergency. Never raise the seat height with Safety Line of the upper seat post above the quick release on the lower seat post.
2. Raise the kickstand.
3. Set the speed mode to S.
4. Adjust the rear view mirror so that you can see traffic from behind.
5. With both hands on the handlebars and one foot on the standing board and one foot on the ground, slowly press the accelerator.
6. As the motor begins to slowly propel the scooter forward, place the foot on the ground onto the riding board. Press the thumb control more to increase speed when feeling comfortable and safe.



WARNING: Always ride at speeds you can comfortably and safely control. Take the time to familiarize yourself with the brakes and the distance it takes to come to a complete stop at various speeds. Keep both hands on the handle grips while operating the scooter at all times. Never take your eyes off the road. Failure to do so could result in serious injury or death.

BATTERY AND CHARGER

Each electric scooter is equipped with a lithium battery and a smart charger designed specifically for each other. **ONLY USE THE CHARGER SUPPLIED BY THE MANUFACTURER TO CHARGE THE SCOOTER.** Do not charge the battery with any other charging system. If the battery or charger is damaged due to improper use, the limited manufacturer warranty shall be void. Do not operate the charger near flammable materials such as carpet. Ensure a dry environment. Never allow the charger or cable to come into contact with water as this may result in electric shock. Never touch the charger or cable with wet hands. Disconnect the charger from the outlet if any fault arises during charging. Always pull the plug, not the cable. Do not allow the charger or cables to be damaged or crushed by sharp edges or heat. The charger supplied with the electric scooter should be regularly examined for damage to the cord, plug, enclosure and other parts. In the event of such damage, the scooter must not be charged until the charger has been repaired or replaced. Unplug the charger and disconnect from the scooter when not in use.

BATTERY:

1. Battery charging port is located at the bottom of the battery. Fully charge the battery before first time operation or first time after a long period of non-usage (see *Instructions for Charging* below). The battery is fully charged when the LED light on the charger turns green. Always cover the charging port after each charge.
2. Always charge the battery in a clean, dry location, free of debris.
3. Charge the battery frequently, ideally with around 30%-50% remaining. The battery can be recharged at any time. Do not think that you need to fully deplete the battery before recharging it. In fact, frequent partial discharge/charge cycles will prolong the battery life vs. full discharge/charge cycles.
4. Fully charge the battery before storing the scooter for extended periods.
5. When not in use, periodically recharge the battery once every three months.
6. Battery damage due to water immersion, collision, improper storage and other non-normal factors is not covered by the limited manufacturer's warranty. **When battery is detached from its docking station, if there is a risk of rain, please pull out the attached pocket and flip it down to cover the charging pins on the docking station to avoid water damage as shown below.** Before reattaching the battery, fold and tuck the pocket to allow proper battery installation.



CHARGER:

1. When you plug the charger into the wall outlet and before you connect it to the scooter, the LED light on the charge shows blue. The battery is charging the scooter when the LED light on the charger is red. When the battery is 95% full, it will turn green. It will continue to charge with a very small current for about 30 minutes after the LED turns green. When battery is 100% full, the charger will stop charging.
2. The provided charger has a built in overcharge protection feature to prevent the battery from being overcharged.
3. Charging time is approximately 5 hours for a fully discharged battery with standard 2A charger. Optional 3A charger would finish charging around 3 hours.
4. Regularly inspect the charger for damage to the cord, plug, enclosure and other parts. In the event of such damage, the charger must not be used until it has been repaired or replaced.
5. Unplug the charger from the wall outlet when not in use.
6. Use only the charger supplied with this scooter or a recommended replacement specified by Glion.
7. Standard 2A charger supplied by Glion is Model No. HP1202L3(90w), manufactured by High Power Technology (KunShan) Inc. Operating temperature is 0°C (32° F) ~ 40°C (104° F).



WARNING: Failure to confirm compatibility, properly install, operate and maintain any charger, component or accessory can result in serious injury or death.

INSTRUCTIONS FOR CHARGING:



Charger Indicator Light. **Green**= Near Full to Full. **Blue** = Has power but not Connected to Scooter. **Red**=Still Charging.



1. Turn the scooter off. The charge port **(K)** is located at the bottom of the battery. Open the charge port rubber protective cover and securely plug the charger into the charge port.
2. Plug the charger into the power outlet.
3. A solid red light on the charger indicates the battery is charging. A solid green light indicates the battery is fully charged.
4. Remove the plug from the power outlet, then remove the charger from the scooter's charging socket. Secure the charge port rubber protective cover.

USAGE:

1. You will not damage the battery by riding the scooter until the battery is fully discharged and the scooter motor shuts down. However, we do ask to promptly recharge the battery after full discharge. Do not store your scooter with an empty battery.
2. Avoid operating the scooter when the battery is hot.

DOLLY FEATURE

When Balto is folded and locked vertically in the dolly rack, user can dolly the scooter by grabbing the handlebar and tilt the scooter towards the side with dolly wheels on the rack as shown below. Make sure the dolly wheels are on the same side of the headlamp and battery.



Scooter seat can be inserted into the seat post holder on the rack.

GLĪON ELECTRIC SCOOTER MAINTENANCE

MECHANICAL:

1. Due to vibration, nuts and bolts can become loose. Make sure that all lug nuts, other nuts and bolts are securely fastened and tighten them if necessary. To test: Pick your scooter up 1-2 inches and bounce it off the ground. Do a quick visual and tactile inspection of the whole scooter. Make sure you inspect all visible nuts, bolts, and structural welds. If anything sounds, feels, or looks loose, or shows signs of stress replace or secure them.



WARNING: Like any mechanical device, an electric scooter and its components are subject to wear and stress. Different materials and mechanisms wear or fatigue from stress at different rates and have different life cycles. If a component's life cycle is exceeded, the component can suddenly and catastrophically fail, causing serious injury or death to the rider. Scratches, cracks, fraying and discoloration are signs of stress-caused fatigue and indicate that a part is at the end of its useful life and needs to be replaced. While the materials and workmanship of your electric scooter or of individual components may be covered by a warranty for a specified period of time by the manufacturer, this is no guarantee that the product will last the term of the warranty. **Product life is often related to the kind of riding you do and to the treatment to which you submit your electric scooter.**

BATTERY:

When used normally, the lithium battery provided with your scooter should not lose more than 30% of its capacity within the first 500 charging cycles. Average battery life for a properly maintained lithium ion battery is approximately 1,000 charge/discharge cycles. If you notice your travel distance significantly diminished despite having a full charge, it is a sign the lithium ion battery needs to be replaced.

Fully charge the battery before storing the scooter for extended periods. Periodically recharge the battery at least every 3 months during storage. Leaving the battery depleted and uncharged for more than 3 months could permanently damage the battery and is not covered by the warranty.



WARNING: Risk of Fire - No User Serviceable Parts
AVERTISSEMENT- Risque d'incendie et de choc électrique - Aucune des pièces ne peut être réparée par l'utilisateur

BATTERY DISPOSAL:

Your Glion product uses lithium ion batteries, which must be recycled or disposed of in an environmentally safe manner. Do not dispose of a lithium ion battery in a fire. The battery may explode. Do not dispose of a lithium ion battery with your household trash. The incineration, landfilling, or combining a lithium ion battery with your household trash is prohibited in most jurisdictions. Locate a place that collects and recycles lithium ion batteries. To search online, go to www.call2recycle.org and enter your zip code, or if you prefer to locate a place by phone, dial 1-877-2-RECYCLE to find the nearest retailer that collects lithium ion batteries.

STORAGE AND DAILY CARE

1. Do not store the scooter in direct sunlight, in damp places, or in temperatures below -10° C (14° F) or above 40° C (104° F).
2. Fully charge the battery every three months if not in use.
3. Keep the scooter clean (See section on Cleaning and Servicing).

GENERAL TROUBLESHOOTING

If you experience problems with your scooter, please refer first to the following troubleshooting guide:

Problem: The scooter folding box does not separate.

Possible causes/solutions:

1. The folding lever pin is not retracted out of the locking position. **Solution:** Pull the pin and hold it.
2. Your foot is not on the standing board to exert body weight on the board while pulling out the folding lever pin. **Solution:** put one foot on the board while unlocking the folding lever pin.
3. Your hand is not holding to the scooter handle tube. **Solution:** put one hand on the handle tube to it towards you while pulling out the folding lever pin.

Problem: The scooter folding box has noise around hinge area.

Possible causes/solutions:

1. The folding hinge needs lubrication. **Solution:** inject some WD40 or 3 in 1 lubricant into the hinge.

Problem: The scooter does not operate.

Possible causes/solutions:

1. The scooter is not turned on. **Solution:** Detach battery and securely reattach and lock the battery.
2. The battery is not charged. **Solution:** Charge Battery.
3. Power is on but no response from throttle accelerator. **Solution:** Check to see if hand brake is actuated.
4. Accelerator does not respond in Eco (S) Mode. **Solution:** Your cruising speed is above the speed limit for Eco Mode

Problem: The Scooter Operates Intermittently.

Possible causes/solutions:

1. The battery is low on charge **Solution:** Recharge Battery.

Problem: Short ride time/runs slow.

Possible causes/solutions:

1. Rider weight. **Solution:** Do not exceed 115 kg (255 lbs.) maximum weight limit.
2. Riding conditions. **Solution:** Use only on flat, dry surfaces. Avoid steep inclines and areas with debris on surface.
3. Battery not fully charged. **Solution:** Charge battery until full.

4. Old/Damaged Battery. **Solution:** Replace Battery. Contact Customer Service on our website: www.getglion.com.

Problem: The luggage rack lock will not fully lock in.

Possible causes/solutions:

1. The front tip of the luggage rack is not fully seated on the rack support extended from seat post. **Solution:** Fully press down the rack until the front tip is fully seated on the support.

IF YOU'VE CONSULTED THE TROUBLESHOOTING GUIDE AND ARE STILL HAVING PROBLEMS WITH YOUR SCOOTER, PLEASE CONTACT CUSTOMER SERVICE ON OUR WEBSITE:

www.getglion.com. Also visit our website for replacement parts, product support, and instructional videos. Use only replacement parts supplied by Glion.

CLEANING, STORING, AND SERVICING

1. **KEEP YOUR SCOOTER DRY:** Do not ride your scooter in wet conditions unless unavoidable. Dry off your scooter immediately.
2. **KEEP YOUR SCOOTER CLEAN:** Remove dust and dirt from your scooter with a wrung-out, damp rag. Dry immediately. Never use solvents. Do not spray your scooter down with water or submerge it.
3. **STORAGE:** Battery performance is susceptible to temperature. Do not store your scooter in direct sunlight or in a high temperature environment like inside of your car. Store your scooter indoors, out of the elements. Room temperature is ideal for storage. Avoid storing the scooter in wet environments. Recharge the battery in full after it has been completely discharged and before storing the scooter for longer periods. Even in storage, please monitor the battery level and recharge the battery fully at least once every 3 months. Storage temperature should be between -10° C (14° F) or above 40° C (104° F).
4. **SERVICE AND DISPOSAL.** Should your scooter require service, please contact customer service through our website: www.getglion.com. Your satisfaction is our greatest priority!
If you need to dispose of the scooter, please make sure you contact a local recycling agency for battery disposal instructions. Battery must not be disposed together with waste as it has high risks of causing fire, explosion and pollution if not handled properly. Please dispose the rest of the scooter according to your local laws and regulations.

PRODUCT REGISTRATION

We encourage you to register your Glion Electric Scooter with us. Registration helps us ensure your continued satisfaction and enables us to contact you with new product instructions. Also, registration and proof of purchase are necessary to make a warranty claim. Please register your Glion Electric Scooter at www.getglion.com/register. Please keep your original proof of purchase in a safe place in the event of a warranty claim.



WARNING: Please register your electric scooter with us. If you don't, we may not be able to contact you directly with important safety recall information.

GLION LIMITED WARRANTY

Your Glion Electric Scooter is covered by a warranty. For the specifics of this warranty, visit our website at: www.getglion.com.

UNDER NO CIRCUMSTANCES SHALL PROBITY CELL LLC, DBA GLION® (“Probity Cell”) BE LIABLE FOR CONSEQUENTIAL, INCIDENTAL OR SPECIAL DAMAGES ARISING DIRECTLY OR INDIRECTLY IN CONNECTION WITH USE, OR INABILITY TO USE, THIS PRODUCT. IN NO EVENT SHALL PROBITY CELL’S LIABILITY FOR BREACH OF WARRANTY, BREACH OF CONTRACT, NEGLIGENCE OR STRICT LIABILITY EXCEED THE COST OF THE PRODUCT COVERED HEREBY. NO PERSON IS AUTHORIZED TO ASSUME FOR PROBITY CELL ANY OTHER LIABILITY IN CONNECTION WITH THE SALE OF THIS PRODUCT.

Some states do not allow the exclusion or limitation of consequential, incidental or special damages, so the above limitation or exclusion may not apply to you. Probity Cell’s limited warranty gives you specific legal rights, and you may also have other rights, which vary from state to state.

YOUR INSURANCE POLICIES MAY NOT PROVIDE COVERAGE FOR ACCIDENTS INVOLVING THE USE OF THIS SCOOTER. TO DETERMINE IF COVERAGE IS PROVIDED, YOU SHOULD CONTACT YOUR INSURANCE COMPANY OR AGENT.