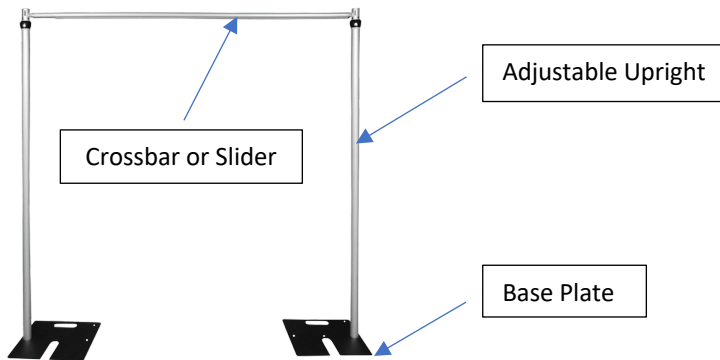




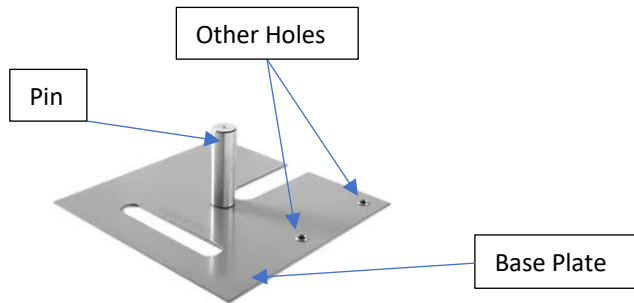
## Hardware Introduction and Operation

Hardware is used to create backdrops, entrance or any other drape structures.

There are mainly three components.



### **1. Base Plate**



Base plates are the foundation of any drape structures.

They come with a 6" Pin attached to the centre of the plate.

You can change the pin location to the other holes provided on the plate by unscrewing a bolt underneath the plate and screwing back into the desired pin location.

Make sure the bolt is inserted from the bottom of the plate where the holes are made countersunk (not from raised hole's lip side)

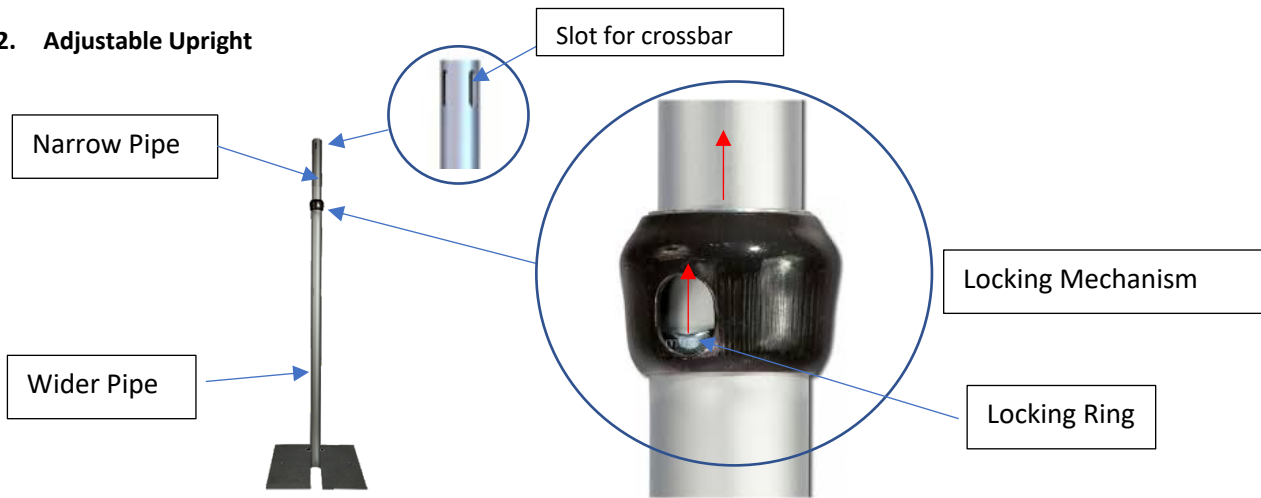
### **The precautions you must take while handing these base plates**

- These are heavy and need to be handled carefully.
- They need to be placed on an even surface.
- We recommend using a cardboard or plastic board under these plates if you are using these on hardwood, laminate or any other flooring that may get damaged



## Hardware Introduction and Operation

### 2. Adjustable Upright



Upright is a vertical component of the drape structure that holds the crossbar and provide the desired height to the structure.

It is made of three sections.

The upper section which is a narrow pipe with slots;

Lower section which is the wider pipe; and a

a locking mechanism which locks these two pipes in place

The pin on the base plate fits in the lower section of the upright allowing it to stand freely.

#### **Raising the height**

1. Place one hand above the black locking mechanism and one below,
2. Pull up the upper section gently to desired height
3. Locking mechanism will engage automatically

#### **Lowering the height**

To lower the upright, you need to disengage the locking mechanism.

1. Grab the upper section with one hand and hold the silver metal ring located in the black locking mechanism with your index finger and thumb of your other hand;
2. Raise the upper section a bit to disengage the lock and slide the metal ring up;
3. Now slide the upper section into the lower section slowly to the desired height.

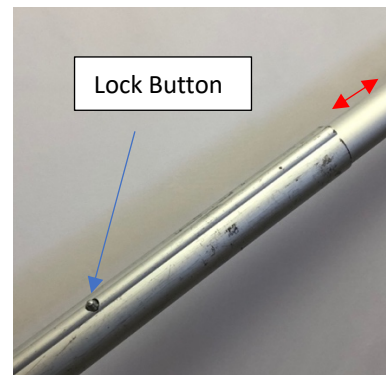
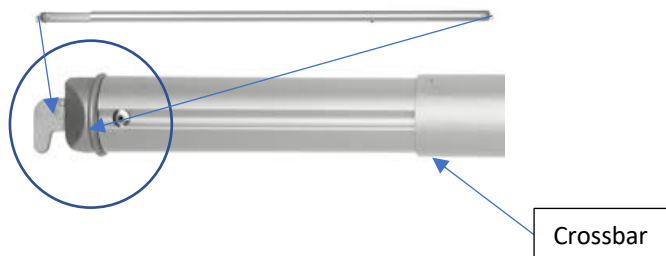


## Hardware Introduction and Operation

### The precautions you must take while handling these base plates

- Raise and lower the height by holding both sections of pipes
- Avoid pinch point at the locking mechanism.
- When moving, carry with locking mechanism slanted upwards to avoid upper section shooting out.

### 3. Adjustable Crossbar also called slider



Crossbar is a horizontal part of the hardware that gives width to your structure and is used to hang the drapes and other décor items. It has hooks on each side which fit in slots on upright.

They come in different sizes and are extendable.

Different sizes have different locking positions.

For example, 4'-7' crossbar is 4' when fully retracted and 7' fully extended. It locks at 6' and 7'.

#### **Extending the crossbar:**

Just pull the narrower section of pipe out and it will lock to the pre-set locking position. To continue to pass this lock, press the lock button down and continue pulling out.

#### **Retracting the crossbar:**

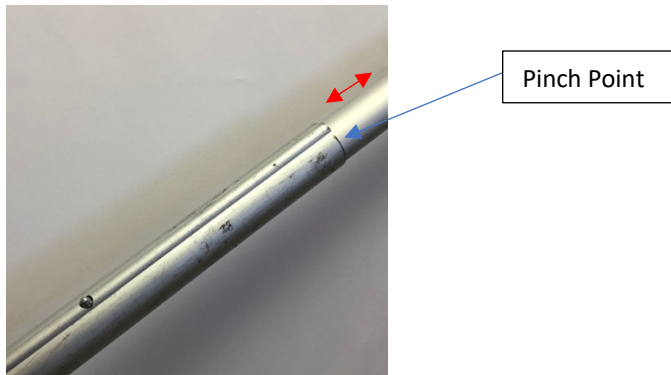
Press the locking button down and push the narrower section in to retract.



## Hardware Introduction and Operation

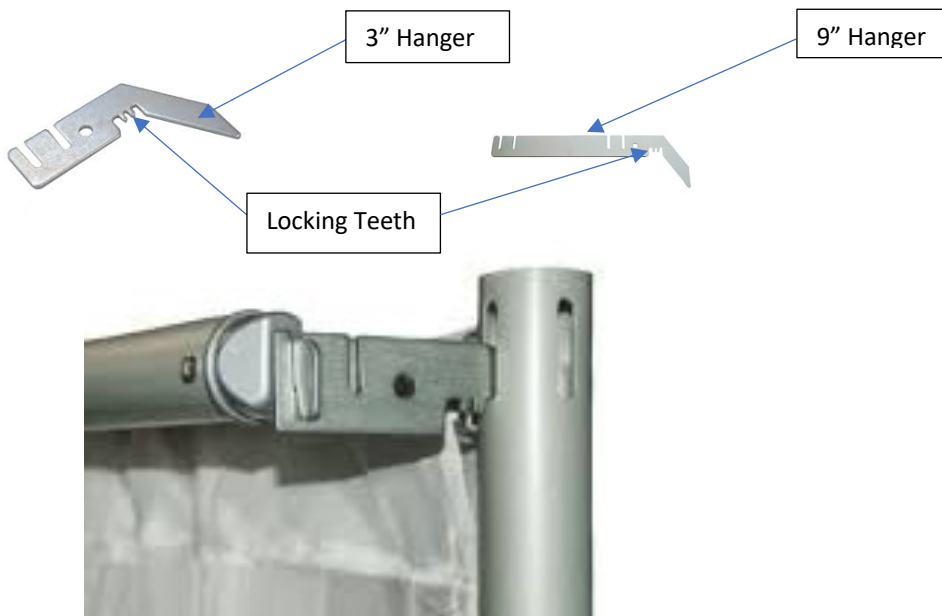
### The precautions you must take while handing these base plates

Avoid the pinch point



### **Additional Crossbar Hangers**

Additional crossbar hangers allow extra crossbars to be added to your drape structures. They come in different sizes and have slots for crossbars, and locking teeth.



- You just need to insert the angled part of the hanger in the upright slot, locking between the teeth on the hanger.
- Use the slots provided on the plate to hang your additional crossbar