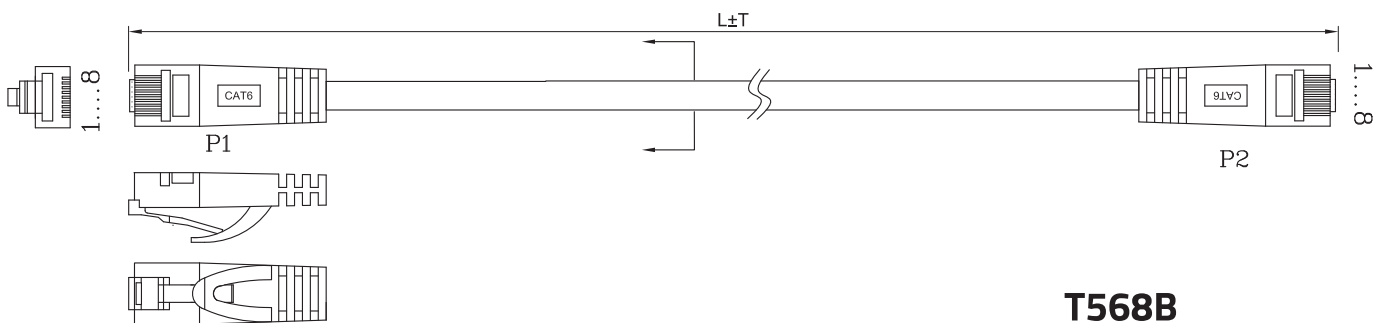


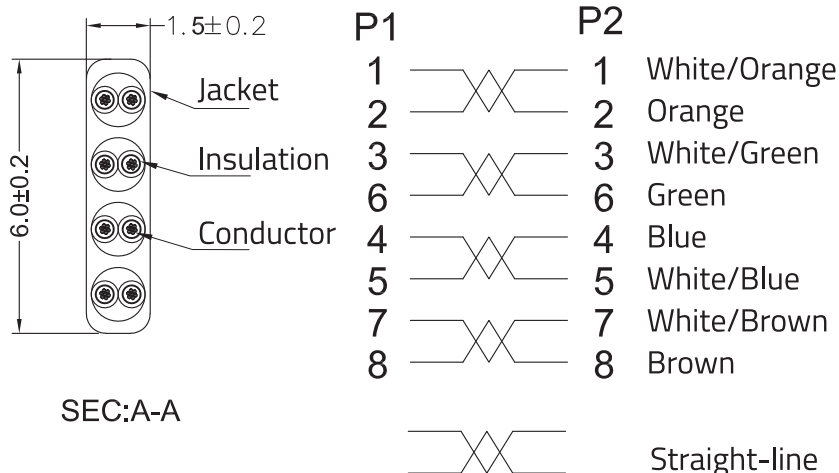
Datasheet | CAT6 Flat LAN Patch Cable

U/UTP | Multiple Length | Flat | PVC | White

Brand: iVOLTaa | Specification: ROHS CAT.6 UTP #32 AWG 7/0.08*4P PVC | Model: iVLAN6-FL



T568B



Product specifications

AWG value	32
Cable design	Flat
Cable length	Multiple Lengths
Cable mantle material	PVC
Cable mantle size	6.2 ± 0.05 mm
Cable type	CAT6
Colour	White
Conductor material	Bare Copper
Conductor Construction	7/0.08 ± 0.005mm
Cabling OD	0.50mm
Conductor Insulation Material	HDPE
Insulation Average Thickness	0.12
Frequency	250 MHz
Jacket Material	PVC
Avg. Jacket Thickness	0.5mm
Maximum bandwidth	1 Gbps
Shielding	UTP

Electrical Characteristics

Temperature Rating	60 °C
Voltage Rating	30V
Dielectric Strength	AC-500V/MIN
Insulation Resistance	100 M (OHMS*KM MIN at 20 °C)
Conductor Resistance	563.49 (OHMS*KM MAX at 20 °C)



iVOLTaa

Voltaa Global

A-16, Second Floor, Gazipur Village, New Delhi - 110096

Specification are subject to change without prior notice.

'iVOLTaa' is registered trademark of **Voltaa Global** and its subsidiaries.

All Rights Reserved. Release 01 (July 2022)

www.iVOLTaa.com