



DEA No. RA0571996
FL License # CMTL-0003
CLIA No. 10D1094068

Certificate of Analysis

Compliance Test

SAVAGE ENTERPRISES
1 VANDERBILT
IRVINE, CA 92614

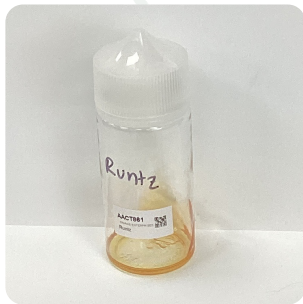
Batch # RZ042922
Batch Date: 2022-04-29
Extracted From: Hemp

Test Reg State: Florida

Order # SAV220429-060001
Order Date: 2022-04-29
Sample # AACT861

Sampling Date: 2022-05-02
Lab Batch Date: 2022-05-02
Completion Date: 2022-05-06

Initial Gross Weight: 28.669 g



Product Image

Potency
Tested

HHC
Tested

Potency 21 (LCUV)

Specimen Weight: 48.790 mg

Tested
(LCUV)

Analyte	Dilution (1:n)	LOD (%)	LOQ (%)	Result (mg/g)	(%)
Delta-8 THC-O Acetate	10.000	0.000027	0.0003	26.0900	2.6090
Delta-8 THC	100.000	0.000026	0.0015	23.4200	2.3420
CBN	10.000	0.000014	0.0015	3.6120	0.3612
Delta-8 THCV	10.000	0.00004	0.0015	1.1510	0.1151
CBNA	10.000	0.000095	0.0015	0.3650	0.0365
THCVA	10.000	0.000047	0.0015	<LOQ	<LOQ
THCA	10.000	0.000032	0.0015	<LOQ	<LOQ
THCV	10.000	0.00007	0.0015	<LOQ	<LOQ
CBC	100.000	0.000018	0.0015	<LOQ	<LOQ
Exo-THC	10.000	0.00023	0.0015	<LOQ	<LOQ
Delta-9 THC-O Acetate	10.000	0.000077	0.0003	<LOQ	<LOQ
CBCA	10.000	0.000107	0.0015	<LOQ	<LOQ
CBT	10.000	0.0002	0.0015	<LOQ	<LOQ
CBL	10.000	0.000035	0.0015	<LOQ	<LOQ
CBGA	10.000	0.00008	0.0015	<LOQ	<LOQ
CBG	10.000	0.000248	0.0015	<LOQ	<LOQ
CBDVA	10.000	0.000014	0.0015	<LOQ	<LOQ
CBDV	10.000	0.000065	0.0015	<LOQ	<LOQ
CBDA	10.000	0.00001	0.0015	<LOQ	<LOQ
CBD	10.000	0.000054	0.0015	<LOQ	<LOQ
Delta-9 THC	10.000	0.000013	0.0015	<LOQ	<LOQ

Potency Summary

Total THC None Detected	Total CBD None Detected
Total CBG None Detected	Total CBN 0.393%
Other Cannabinoids 5.066%	Total Cannabinoids 5.459%

HHC Summary

Analyte	Result (mg/g)	(%)	Total/Unit (mg)
Total HHC	882.51	88.251%	0.00000

Xueli Gao
Ph.D., DABT
Lab Toxicologist

Aixia Sun
D.H.Sc., M.Sc., B.Sc., MT (AAB)
Lab Director/Principal Scientist



Definitions and Abbreviations used in this report: *Total CBD = CBD + (CBD-A * 0.877), *Total CBDV = CBDV + (CBDVA * 0.87), *Total THC = THCA-A * 0.877 + Delta 9 THC, *Total THCV = THCV + (THCVA * 0.87), *CBG Total = (CBGA * 0.877) + CBG, *CBN Total = (CBNA * 0.877) + CBN, *Total CBC = CBC + (CBCA * 0.877), *Total THC-O-Acetate = Delta 8 THC-O-Acetate + Delta 9 THC-O-Acetate, *Other Cannabinoids Total = Total Cannabinoids - All the listed cannabinoids on the summary section, *Total Detected Cannabinoids = Delta6a10a-THC + Delta8-THC + Total CBN + CBT + Delta8-THCV + Total CBG + Total CBD + Total THCV + CBL + Total THC + Total CBC + Total CBDV + Delta10-THC + Total THC-O-Acetate, *Analyte Details above show the Dry Weight Concentrations unless specified as 12% moisture concentration. (mg/ml) = Milligrams per Milliliter, LOQ = Limit of Quantitation, LOD = Limit of Detection, Dilution = Dilution Factor (ppb) = Parts per Billion, (%) = Percent, (cfu/g) = Colony Forming Unit per Gram (cfu/g) = Colony Forming Unit per Gram, , LOD = Limit of Detection, (µg/g) = Microgram per Gram (ppm) = Parts per Million, (ppm) = (µg/g), (aw) = aw (area ratio) = Area Ratio, (mg/Kg) = Milligram per Kilogram, *Measurement of Uncertainty = +/- 10%

This report shall not be reproduced, without written approval, from ACS Laboratory. The results of this report relate only to the material or product analyzed. Test results are confidential unless explicitly waived otherwise. Accredited by a third-party accrediting body as a competent testing laboratory pursuant to ISO/IEC 17025 of the International Organization for Standardization.



DEA No. RA0571996
FL License # CMTL-0003
CLIA No. 10D1094068

Certificate of Analysis

Compliance Test

SAVAGE ENTERPRISES
1 VANDERBILT
IRVINE, CA 92614

Batch # RZ042922
Batch Date: 2022-04-29
Extracted From: Hemp

Test Reg State: Florida

Order # SAV220429-060001
Order Date: 2022-04-29
Sample # AACT861

Sampling Date: 2022-05-02
Lab Batch Date: 2022-05-02
Completion Date: 2022-05-06

Initial Gross Weight: 28.669 g



HHC

Specimen Weight: 48.790 mg

Tested (LCMS)

Dilution Factor: 1.000

Analyte	LOQ (%)	Result (mg/g)	(%)	Analyte	LOQ (%)	Result (mg/g)	(%)
(9R)-HHC	7.5E-5	226.0000	22.6	(±)-9β-hydroxy-HHC	7.5E-5	2.5100	0.251
(9S)-HHC	7.5E-5	654.0000	65.4	Total HHC	7.5E-5	882.5100	88.251

Xueli Gao
Xueli Gao
Ph.D., DABT
Lab Toxicologist

Aixia Sun
Aixia Sun
D.H.Sc., M.Sc., B.Sc., MT (AAB)
Lab Director/Principal Scientist



Definitions and Abbreviations used in this report: *Total CBD = CBD + (CBD-A * 0.877), *Total CBDV = CBDV + (CBDVA * 0.87), *Total THC = THCA-A * 0.877 + Delta 9 THC, *Total THCV = THCV + (THCVA * 0.87), *CBG Total = (CBGA * 0.877) + CBG, *CBN Total = (CBNA * 0.877) + CBN, *Total CBC = CBC + (CBCA * 0.877), *Total THC-O-Acetate = Delta 8 THC-O-Acetate + Delta 9 THC-O-Acetate, *Other Cannabinoids Total = Total Cannabinoids - All the listed cannabinoids on the summary section, *Total Detected Cannabinoids = Delta6a10a-THC + Delta8-THC + Total CBN + CBT + Delta8-THCV + Total CBG + Total CBD + Total THCV + CBL + Total THC + Total CBC + Total CBDV + Delta10-THC + Total THC-O-Acetate, *Analyte Details above show the Dry Weight Concentrations unless specified as 12% moisture concentration. (mg/ml) = Milligrams per Milliliter, LOQ = Limit of Quantitation, LOD = Limit of Detection, Dilution = Dilution Factor (ppb) = Parts per Billion, (%) = Percent, (cfu/g) = Colony Forming Unit per Gram (cfu/g) = Colony Forming Unit per Gram, LOD = Limit of Detection, (µg/g) = Microgram per Gram (ppm) = Parts per Million, (ppm) = (µg/g), (aw) = aw (area ratio) = Area Ratio, (mg/Kg) = Milligram per Kilogram, *Measurement of Uncertainty = +/- 10%

This report shall not be reproduced, without written approval, from ACS Laboratory. The results of this report relate only to the material or product analyzed. Test results are confidential unless explicitly waived otherwise. Accredited by a third-party accrediting body as a competent testing laboratory pursuant to ISO/IEC 17025 of the International Organization for Standardization.