



Lifted Made

Sample 226-032822-321

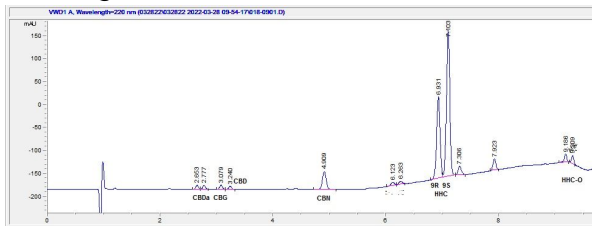
Urb: Cranberry Kush

Sample Submitted: 03-28-2022; Report Date: 03-29-2022

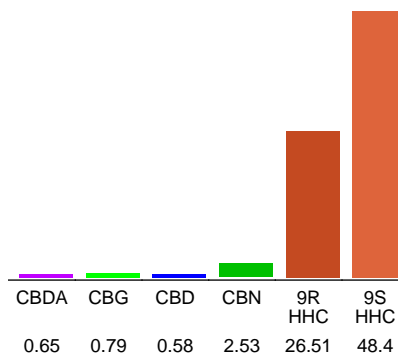
## Urb: Cranberry Kush

Crystalline

### Chromatogram



### Cannabinoid Profile



### Cannabinoid Profile by HPLC

**0.00%**  
Calculated THC Yield

**1.15%**  
Calculated CBD Yield

**79.46%**  
Total Cannabinoids

Cannabinoid	% wt	mg/g
CBDA	0.65	6.5
CBG	0.79	7.9
CBD	0.58	5.8
CBN	2.53	25.3
9R HHC	26.51	265.1
9S HHC	48.4	484.0
<b>Total Cannabinoids</b>	<b>79.46</b>	<b>794.6</b>
<b>Calculated THC Yield</b>	<b>0.00</b>	<b>0.00</b>
<b>Calculated CBD Yield</b>	<b>1.15</b>	<b>11.50</b>

Calculated Maximum THC Yield = THC + 0.877 \* THCA

Calculated Maximum CBD Yield = CBD + 0.877 \* CBDA

**Notes:** HHC-O 6.1% based on percentage in the chromatogram; no reference standard is available.

**Marin Analytics, LLC**  
250 Bel Marin Keys Blvd, Suite D4  
Novato, CA 94949

415-936-6477 / sarabiancalana1@gmail.com

**Sara Biancalana**  
Chief Scientist

This sample has been tested by Marin Analytics, LLC using valid testing methodologies and a quality system. Values reported relate only to the sample tested. Marin Analytics, LLC makes no claims as to the efficacy, safety or other risks associated with any detected or non-detected levels of any compounds reported herein. This Certificate shall not be reproduced except in full, without the written approval of Marin Analytics, LLC.