



**HALO<sup>®</sup>**  
**POWERPATCH**  
**WIRELESS<sup>™</sup>**

---

**WIRELESS PORTABLE CHARGER  
WITH ANTI-SLIP PATCH**

**OPERATING INSTRUCTIONS**  
PLEASE READ BEFORE OPERATING THIS EQUIPMENT

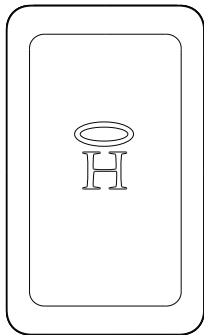
## **HALO POWERPATCH WIRELESS**

Thank you for choosing HALO. Innovative, fashionable and easy to use, the HALO POWERPATCH WIRELESS provides a powerful and universal charging source for both wireless and non-wireless devices. Equipped with an anti-slip patch and the HALO PowerEye System, the HALO POWERPATCH WIRELESS will stick to almost any smooth surfaced phone or phone case. The HALO PowerEye Adapter perfectly aligns the HALO POWERPATCH WIRELESS on the back of your device to optimize wireless charging. The anti-slip patch can be renewed effortlessly by simply wiping down the patch with a damp cloth, making it just like new! When not in use, protect the patch from dirt and dust with the built-in Anti-Dust Shield.

Please read the operating instructions carefully before using the HALO POWERPATCH WIRELESS.

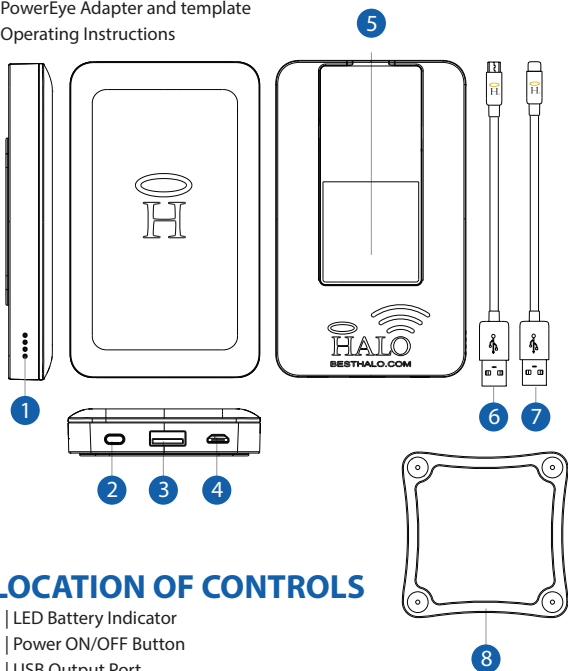
## TABLE OF CONTENTS

Included Items	1
Operating Instructions	2-6
Safety Precautions	7
Specifications	8
Warranty and Contact Information	9



## INCLUDED ITEMS

- HALO POWERPATCH WIRELESS
- USB to Micro USB Cable
- USB to USB C Cable
- PowerEye Adapter and template
- Operating Instructions



## LOCATION OF CONTROLS

- 1 | LED Battery Indicator
- 2 | Power ON/OFF Button
- 3 | USB Output Port
- 4 | Micro USB Input Port
- 5 | Anti-Slip Patch
- 6 | USB to Micro USB Cable
- 7 | USB to USB C Cable
- 8 | HALO PowerEye Adapter

## OPERATING INSTRUCTIONS

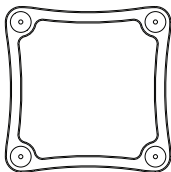
Please make sure to fully charge the HALO POWERPATCH WIRELESS. Prior to first use, remove the thin plastic cover attached to the anti-slip patch. This can be easily peeled off and discarded.

### NOTE:

Press the Power ON/OFF button to display the amount of charge on the HALO POWERPATCH WIRELESS. The LED battery indicator will display four solid blue lights when fully charged.

## HALO POWEREYE

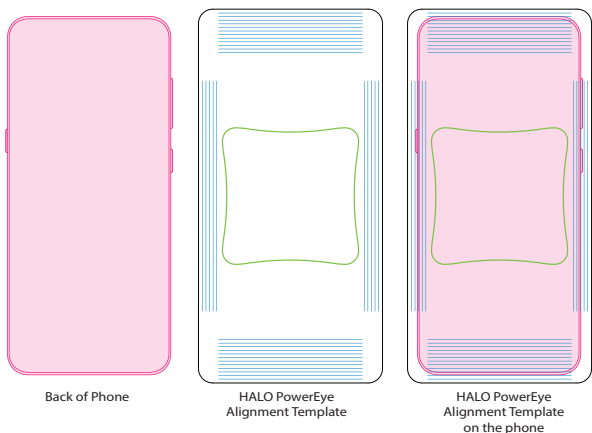
The HALO POWERPATCH WIRELESS features the HALO PowerEye System that allows for the HALO POWERPATCH WIRELESS unit to attach to your phone magnetically using the provided PowerEye Adapter. The PowerEye Adapter needs to be placed directly in the center of the back of your wireless compatible device to optimize wireless charging. This will allow you to easily attach/detach the HALO POWERPATCH WIRELESS unit using the magnetic PowerEye System.



PowerEye Adapter

The HALO PowerEye Adapter needs to be placed directly in the center of the back of your phone to ensure a connection is established for wireless charging. Use the included template to ensure you place the HALO PowerEye Adapter in the center of the back of your phone. The lines on the side, top, and bottom of the template provide guidance to identify where the center of the back of your phone is. You should have the same number of lines visible at the top and bottom and on each side. Once the template is in place, remove the adhesive cover from the

HALO PowerEye Adapter and press it against your phone in the center cutout area of the template.



## **ATTACHING THE HALO POWERPATCH WIRELESS USING THE ANTI-SLIP PATCH**

Equipped with an anti-slip patch, the HALO POWERPATCH WIRELESS will stick to almost any smooth surfaced phone or phone case. The HALO POWERPATCH WIRELESS is intended to stick to the back of your devices for a hands free charge. To attach the HALO POWERPATCH WIRELESS to your device, simply fold down the door, face the anti-slip patch toward your device and press & hold for 5-10 seconds.

## **REMOVING THE HALO POWERPATCH WIRELESS WHEN USING THE ANTI-SLIP PATCH**

To remove the HALO POWERPATCH WIRELESS from your device, gently pull from the bottom edge. The HALO POWERPATCH WIRELESS can easily be

peeled off and reattached to different devices.

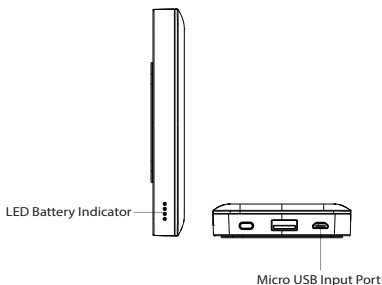
When not in use, protect the anti-slip patch from dust and dirt by closing the door attached to the patch. This door acts as an anti-dust shield.

## CLEANING ANTI-SLIP PATCH

To clean the anti-slip patch, simply wipe down with a damp cloth and let dry, making it just like new.

## CHARGING THE HALO POWERPATCH WIRELESS

The HALO POWERPATCH WIRELESS operates on a rechargeable battery. First, use the USB to Micro USB Cable (included) and connect the Micro USB tip into the Micro USB input port on the HALO POWERPATCH WIRELESS. Next, connect the standard USB tip into your computer's USB port or a USB adapter (not included).



While charging, the LED battery indicator will illuminate. When the battery is fully charged, the power indicator will display four solid blue lights. When fully charged, disconnect the USB to Micro USB Cable.

**NOTE:**

The Micro USB Input Charging Port located on this unit is solely used for charging the internal battery of the HALO POWERPATCH WIRELESS.

## CHARGING ELECTRONIC DEVICES

The HALO POWERPATCH WIRELESS comes equipped with a Micro USB Cable and a USB C Cable.

To charge Micro USB devices, use the Micro USB Cable and plug the Micro USB tip into your electronic device. Next, plug the USB tip of the Micro USB Cable into the HALO POWERPATCH WIRELESS USB Output Port to begin charging.

To charge USB C compatible devices, use the USB C Cable and plug the USB C tip into your electronic device. Next, plug the USB tip of the USB C Cable into the HALO POWERPATCH WIRELESS USB Output Port to begin charging.

**NOTE:**

If your electronic device does not have a Micro USB Input or a USB C Input, use the charging cable provided with your electronic device. To use, plug the standard USB tip of the cable into the USB Output Port located on your HALO POWERPATCH WIRELESS.

## CHARGING WIRELESS DEVICES

First, make sure your smart phone is compatible with wireless charging. Then center the HALO PowerPatch Wireless on the back of your phone using the anti-slip patch or HALO PowerEye adapter. Press the power ON/OFF button and charging will begin.

**NOTE:**

Ensure there is no metal obstruction on the back of the phone or phone case, or credit cards inside the phone case.



# WIRELESS CHARGING TROUBLESHOOTING TIPS

Condition	Potential Cause	Solution
Phone is not charging wirelessly	The wireless charging output is not active. The wireless charging function is controlled via the Power ON/Off Button*	Press the Power On/Off button to activate wireless charging. Check your phone to validate charging.
	Phone case may be too thick, other obstructions such as magnets, stickers, rings may get in the way	Remove the obstructions that are on the back of the phone.

## HALO POWERPATCH WIRELESS POWER LEVEL INDICATORS

Indicator Lights	How to Read	Amount of Charge
● ○ ○ ○	One solid light	0%-25%
● ● ○ ○	Two solid lights	26%-50%
● ● ● ○	Three solid lights	51%-75%
● ● ● ●	Four solid lights	76%-100%

## SAFETY PRECAUTIONS

This HALO POWERPATCH WIRELESS has been designed and manufactured to ensure your personal safety when used in the directed manner. Improper use can result in potential hazard.

Please read all safety precautions and operating instructions carefully before installation and use. Keep these instructions handy for future reference.

- The HALO POWERPATCH WIRELESS should not be used near water or wet areas such as bathtubs, showers, bathrooms, sinks, swimming pools or basements.
- To clean, use a damp cloth to gently wipe the surface of only the patch area of the HALO POWERPATCH WIRELESS.
- To reduce the risk of fire or electric shock, do not expose the HALO POWERPATCH WIRELESS to rain or moisture. Keep the HALO POWERPATCH WIRELESS away from dripping, splashing, or any objects filled with liquids.
- Do not place anything on HALO POWERPATCH WIRELESS. Do not place any metal obstructions between the HALO POWERPATCH WIRELESS and your electronic device while charging wirelessly.
- Keep away from heat sources, including but not limited to open flame sources, radiators, stoves, ovens, cars, and amplifiers that produce heat.
- Do not puncture, crush or subject to mechanical shock.
- Do not disassemble.
- Unplug the charger when batteries are fully charged or not in use.
- Li-ion batteries must be recycled. Do not dispose of in the trash.

## SPECIFICATIONS

Model:	HPPW-4000
Battery Cell Capacity:	4000mAh
Micro USB Input:	5V  2.0A
USB Output:	5V  2.0A
Wireless Output:	5 Watts (5V/1A)
Dimensions:	2.7 x 4.5 x .7 inches
Weight:	160 g

## COMPLIANCE WITH FCC REGULATIONS

This device complies with Part 15 of the FCC Rules. Operation is subject to the following two conditions: (1) this device may not cause harmful interference, and (2) this device must accept any interference received, including interference that may cause undesired operation.

**Warning:** Changes or modifications to this unit not expressly approved by the party responsible for compliance could void the user's authority to operate the equipment.

This equipment has been tested and found to comply with the limits for a Class B digital device, pursuant to Part 15 of the FCC Rules. These limits are designed to provide reasonable protection against harmful interference in a residential installation. This equipment generates, uses and can radiate radio frequency energy and, if not installed and used in accordance with the instructions, may cause harmful interference to radio communications. However, there is no guarantee that interference will not occur in a particular installation. If this equipment does cause harmful interference to radio or television reception, which can be determined by turning the equipment off and on, the user is encouraged to try to correct the interference by one or more of the following measures:

- Reorient or relocate the receiving antenna.
- Increase the separation between the equipment and receiver.
- Connect the equipment into an outlet on a circuit different from that

to which the receiver is connected. Consult the dealer or an experienced radio/TV technician for help.

## LIMITED WARRANTY

HALO INTERNATIONAL SEZC LTD. (HALO) warrants its products to be free from defects in material and workmanship under normal use.

Conditions are as follows:

- During the first 90 days from date of purchase, HALO INTERNATIONAL SEZC LTD. will repair or replace the defective product.
- HALO INTERNATIONAL SEZC LTD. will, subject to inspection, repair the defective product or replace it with a new or reconditioned unit. The return must be accompanied by a Return Merchandise Authorization (RMA) number to be issued upon request, and must be shipped prepaid.
- Where applicable, all requests for warranty returns must be accompanied by a proof of purchase.
- The warranty does not extend to the electronic equipment that is used, or incorporates with any of our products and accessories. HALO INTERNATIONAL SEZC LTD. shall not be held responsible for the improper use of its products.
- In no event shall HALO be liable for any incidental, special, consequential or punitive damages arising out of the use of HALO's products.

For all questions or exchange requests, please call 888-907-6274, or email us at [support@BestHALO.com](mailto:support@BestHALO.com)

This Limited Warranty sets forth the full scope of HALO's obligations and liabilities with respect to the product. All implied warranties, including without limitation the implied warranties of merchantability and fitness for a particular purpose, are limited to the duration of this Limited Warranty. In no event shall HALO be liable for any incidental, special, consequential or punitive damages or any damages or losses of or to electronic equipment or products that are used with any of HALO's products.



FOR TECHNICAL SUPPORT

EMAIL US AT:

**SUPPORT@BESTHALO.COM**

OR

CALL US AT:

**888-907-6274**

**HALO INTERNATIONAL SEZC LTD.  
90 NORTH CHURCH STREET,  
GEORGE TOWN, GRAND CAYMAN**

**WWW.BESTHALO.COM**