

**MASSAGE CHAIR**  
**MODEL:A620**  
**User Manual**

# WARRANTY CARD

# CONTENTS

## 3 Years Standard Warranty Terms

- We guarantees that the massage chairs come with a three year limited warranty. ( Three years from date of purchase.).
- During the first year, the warranty covers free maintenance and repair for any defect in workmanship or materials.
- During the second and third year,the warranty covers the cost of parts,excluding labor.

## Not Covered by Warranty

Any loss or damage resulting from: improper installation, unauthorized repairs, alterations or modifications of original condition, improper use of electrical power supply, loss of power, power surges, failure to follow operating in structure, transportation damage, abuse, misuse or environmental conditions, loss of use during repairs, and products purchased from unauthorized dealers.

Damage incurred due to shipping and handling does not constitute a defect under this warranty.

## Warranty Registration

Register your product at <https://alfine.org/warranty-registration/> to ensure it is in our system. This will simplify the warranty proces should you ever need it.  
Alternatively, scan the QR code to go directly to the URL above.



Please read and follow all safety and operating instructions listed in this user manual prior to use. Basic precautions should always be used when operating.

Safety Instructions	-----2-3
Product Specifications	-----4
Product Components	-----5-6
Chair Installation	-----7-11
Before Use	-----12
Instructions	----- 13-20
Trouble Shooting	-----21
Maintenance	-----22
Warranty Card	-----23

Note: Our company reserves the right to revise the design and description of this product without any further notice.

## SAFETY INSTRUCTIONS

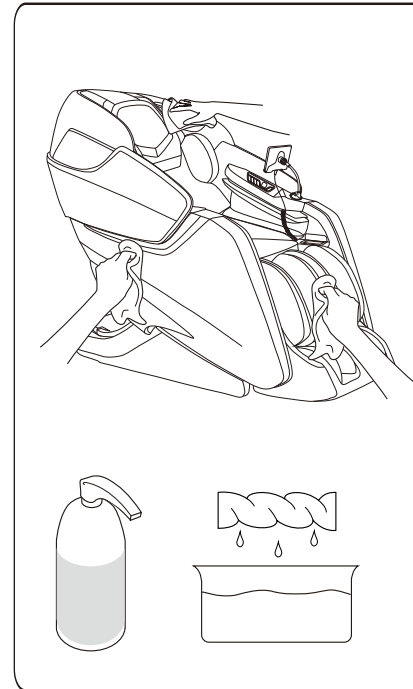
### Warning

The power plug must insert properly to the power outlet. If the connection of power plug is not connected properly it can result the risk of electric shock.

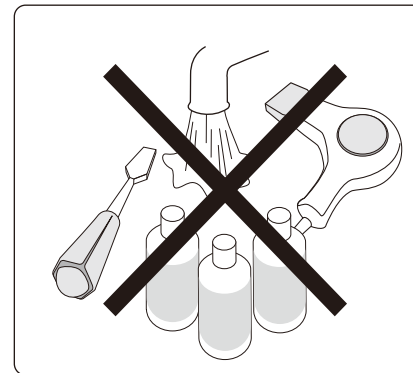
Do not modify the power plug provided with the product. If the outlet is not suitable. Please make sure that the power outlet is properly installed by a qualified electrician. When using the massage chair, basic precautions should always be followed to reduce the risk of electric shock.

1. Please make sure that the power plug is properly inserted into the proper outlet.
2. Make sure that the power plug is properly inserted into the proper outlet to reduce the risk of short-circuit and fire.
3. Always unplug the massage chair from the electrical outlet immediately after use and before cleaning.
4. Do not use the massage chair in places where the humidity is high.
5. Do not use the massage chair for outdoors and avoid place with direct sunlight.
6. If the power goes OFF during use make sure to switch the power OFF position and removed the power plug out from power socket to prevent damage when the power is restored.
7. Do not operate the massage chair if the power cord is wet or damaged.
8. Do not plug or unplug the power cord from the power socket with wet hands.
9. Supervision is necessary when the massage chair is being used by or near the children or disabled person.
10. Use the massage chair only for its intended use as described in this use manual.
11. Do not stand, sit or jump in the calves rest, backrest and armrest when the massage chair is in use to prevent any injury.
12. Do not fall asleep during the massage session.
13. Always keep the massage chair clean and do not insert any object into the gaps and around the massage chair.
14. Do not move the massage chair by pulling the power supply cord.
15. Always check whether the surface of the massage chair is torn or ripped before use, if you found any unfamiliar rips in any area of the cloth in the backrest, do not use the massage chair, kindly contact the authorized service center for repair.
16. This appliance is designed for household use only.
17. For those people who suffering from illnesses, please consult doctor before use.

## MAINTENANCE



- \* Unplug from the wall socket before cleaning the chair.
- \* Wipe off water or sweat with a dry cloth.
- \* Use only neutral and non-corrosive agents to remove dirt & stain.
- \* Use damp cloth for general cleaning.



- \* Do not clean the chair with water.
- \* Do not use hair dryer to dry up the chair.

## TROUBLE SHOOTING

If abnormal sounds or movements are observed, please power off the massage chair by turning off the main power switch, and removing the plug from the electric outlet. Please contact the customer service department for further assistance.

Problem	Solution
Make a sound when running.	The sound of the structural design will not affect the chair.
The massage chair is connected to power but is not functioning.	1. Check to see if plug is inserted properly, or if power outlet is functioning properly. 2. Check to see if the main power switch is in the "I" position.
The remote controller is responding, but the massage chair is not functioning.	The massage chair may have automatically shut down due to overheating protection devices. Please turn off the power and allow the chair to cool off for 30-50 minutes.
Both the remote controller and massage chair are not responding.	The massage chair automatically goes into idle mode when a massage program is completed. Please press the power button again to turn on the chair.

## SAFETY INSTRUCTIONS

18. The following condition should consult doctors before use :

- Suffering from malignant tumor
- People with heart disease
- Woman in pregnancy, menstruation and puerperal fever
- People with osteoporosis
- People who are medicated or under medication
- People with back bended exceptionally by the accident or disease.

19. If you experience pain during usage, stop using the massage chair immediately, if any injuries occur, seek medical treatment immediately.

20. Do not massage the swollen or inflamed parts of the body.

21. This product is non-professional appliance designed to provide a comfortable massage. Do not use this product as substitute for medical treatment.

22. Each massage session should not exceed 30 minutes. Massage the targeted area for only 15 minutes, over-massaging can lead to overheating, thus giving the appliance shorter lifespan.

23. Do not operate where aerosol(spray) product are used or where oxygen is being administered.

24. The massage chair is not suitable for children aged 12 and below.

### NOTE:

This appliance is not intended for use by persons(including children) to reduce the physical sensory or mental capabilities, or lack of knowledge how to use the massage chair unless they have been given supervision or instruction concerning to use this appliance by the responsible person for their safety.

If the power supply cord is damaged, it must be replaced by a special or assembled available from the manufacture or its service agent .

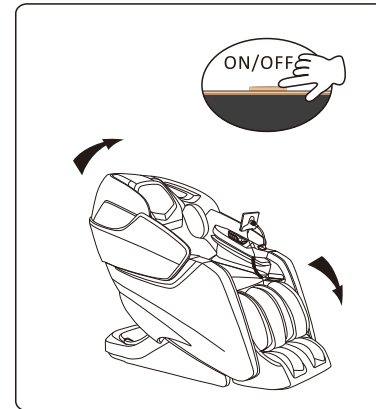
The massage chair heats up during operation. persons sensitive to heat must take extra caution when using the massage chair .

## PRODUCT SPECIFICATIONS

Description	Specifications
Product Name	Massage Chair
Model No.	A620
Rated Voltage	110-240V~
Rated Frequency	50-60Hz
Rated Power Consumption	200W
Product Dimension (LxWxH)	1562mmx800mmx1203mm
Product Weight	121kg

## INSTRUCTIONS

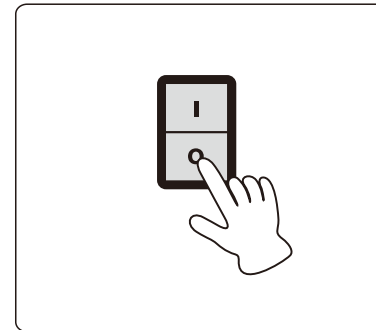
### After use



1) Press the power button to power off the massage chair.

\* Make sure whether there are no barriers around the massage chair.

2) Get up when massage chair rest to initial state



3) Turn off the main power switch.

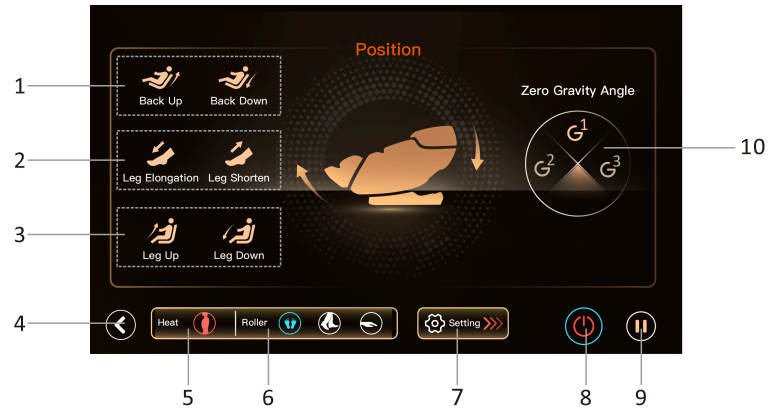
4) Remove plug from power outlet.

\* Please do not pull on the power cord to remove the plug.

\* Please do not unplug with wet hands.

# INSTRUCTIONS

## 6.Position



- 1.Backrest incline/decline
- 2.Legrest extend
- 3.Legrest incline/decline
- 4.Return
- 5.Heating switch
- 6.Roller massage position selection area
- 7.Setting
- 8.Off
- 9.Pause
- 10.Zero gravity: three option

### The method of playing the bluetooth music in massage chair

A: Match: Open the bluetooth function in mobile phone or Ipad, and search nearby. choose the massage chair bluetooth function music equipment and match with it.

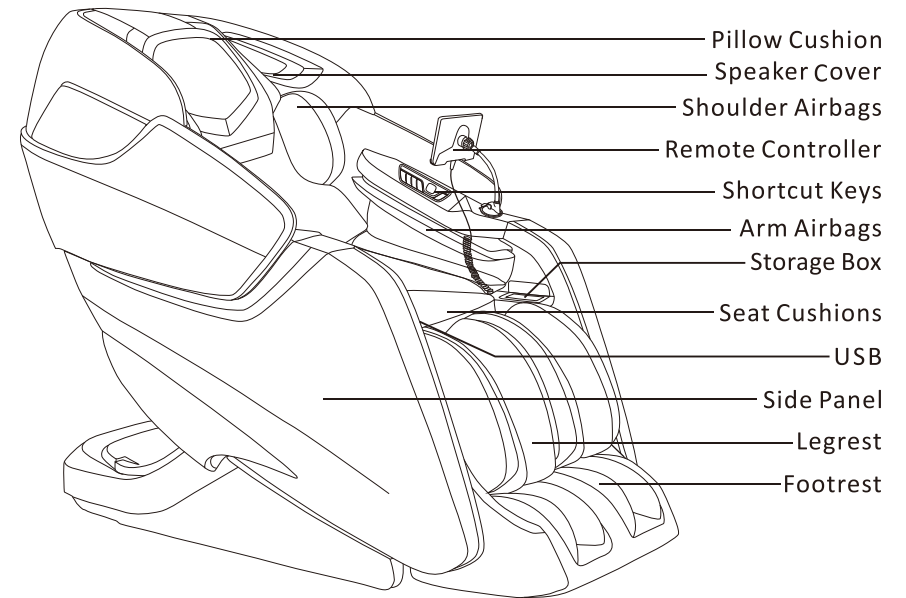
B: Play music: After matching with it, you can display the music by mobile or APP music display software.

#### Attention:

Please off the bluetooth connection when not in use so as for other devices to connect smoothly.

# PRODUCT COMPONENTS

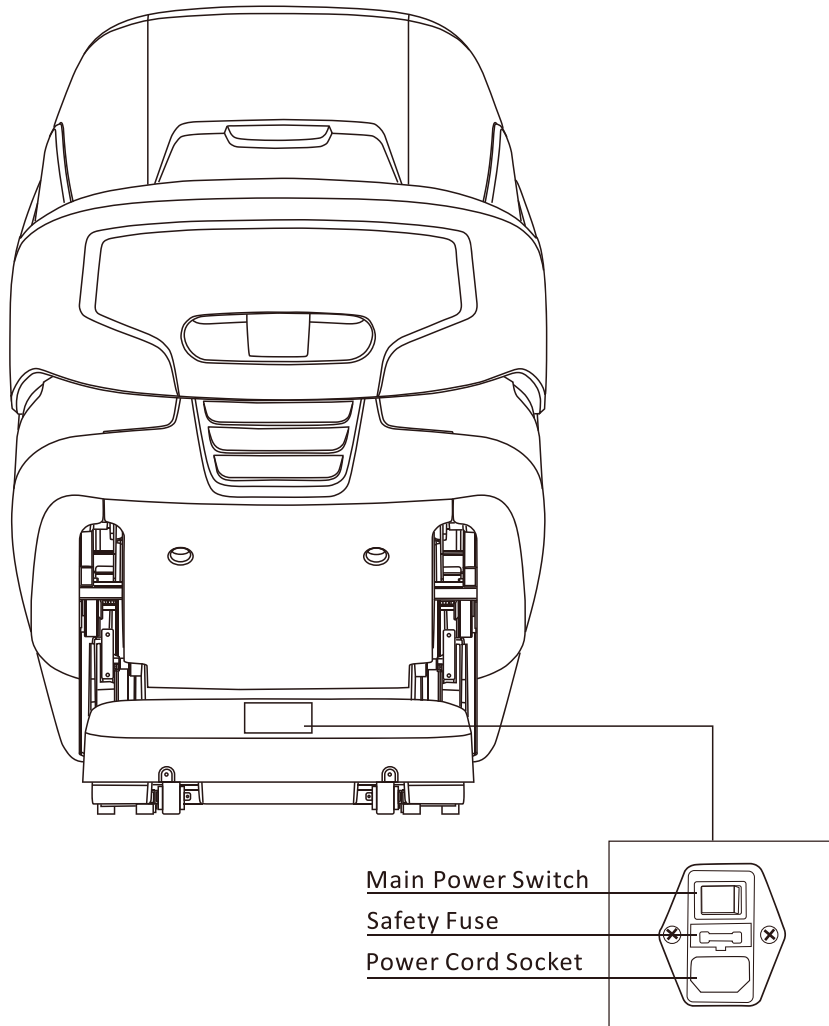
## Main Body Diagram (Front)



# PRODUCT COMPONENTS

# INSTRUCTIONS

## Main Body Diagram (Back)



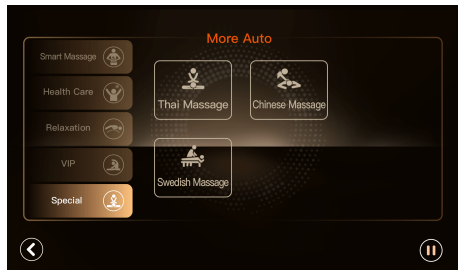
1. Massage area option

2. Mechanism position adjust



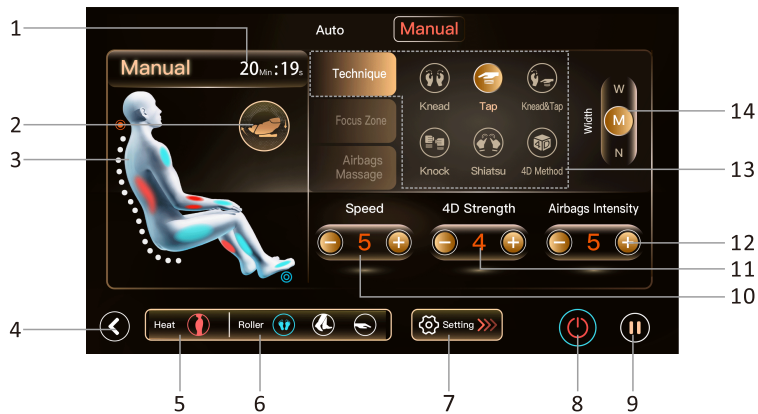
1. Airbag massage position selection area

# INSTRUCTIONS



There are 22 kinds of all-round unique automatic massage mode.

## 5. Manual



- |   |                    |   |
|---|--------------------|---|
| 1. Time remaining   | 2. Position adjust | 3. Mechanism/airbag/heat/roller position  |
| 4. Return   | 5. Heating switch  | 6. Roller massage position selection area |
| 7. Setting  | 8. Off             | 9. Pause                                  |
| 10. Mechanism speed adjust  |                    | 11. 4D strength adjust                    |
| 12. Airbag intensity adjust   |                    | 13. Massage technique selection           |
| 14. Massage width adjust ( it do not works once the kneading start) |                    |   |

# CHAIR INSTALLATION

## 1. Installation steps

The screws and fittings used during installation are shown below:



No.1 screw



No.2 screw



No.3 screw



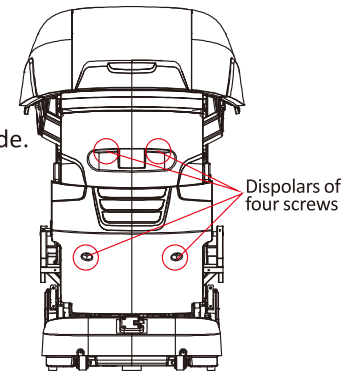
No.4 screw



Buckle

### 1. Remove the back cover

- (1) Twist the four screws on the back cover, remove the back cover, and place the back cover and screws aside.



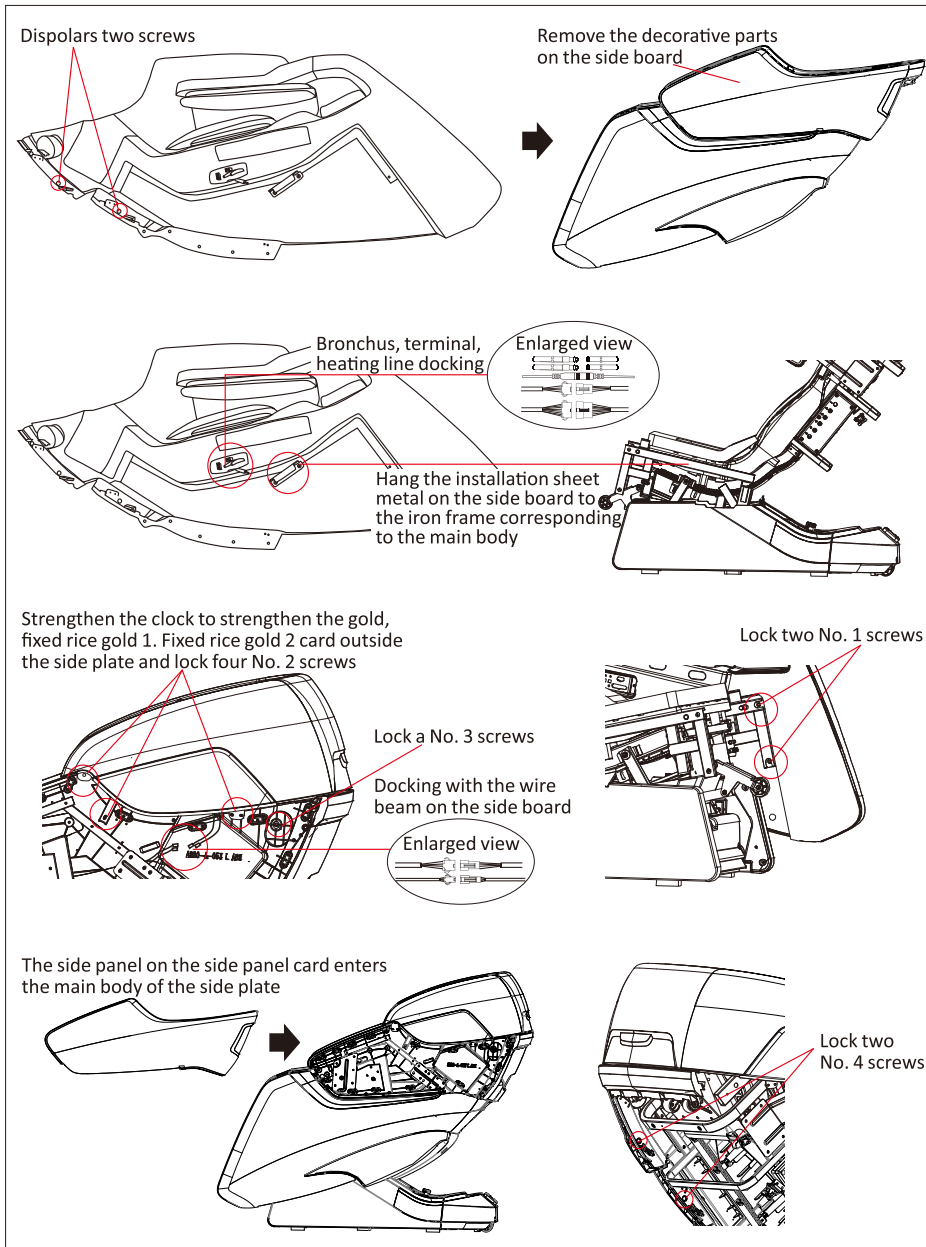
### 2. Installation side plate

- (1) Take out the side board from the packaging box, unscrew the two screws in the specified position of the side plate, then remove the decorative parts on the side plate, and place the decorative parts on the side plate aside.
- (2) Connect the bronchus, terminals, and heating lines on the side board with the docking on the main body.
- (3) Hang the installation rice on the side plate to the iron frame corresponding to the main body. Put the side board into the head cover, enhance the gold, fixed rice gold 1. Fixed rice gold 2 card on the outside of the side plate and lock four No. 2 screws.
- (4) Lock the No. 1 screw and No. 3 screw at the specified position of the side plate.
- (5) Connect the wire beam on the side plate with the coating.
- (6) Finally, the disassembled side plate on the side panel is put on the side plate. After the card is entered, pay attention to check whether the gap is uniform, and lock two No. 4 screws at the specified location.
- (7) Install the other side board on the same step.

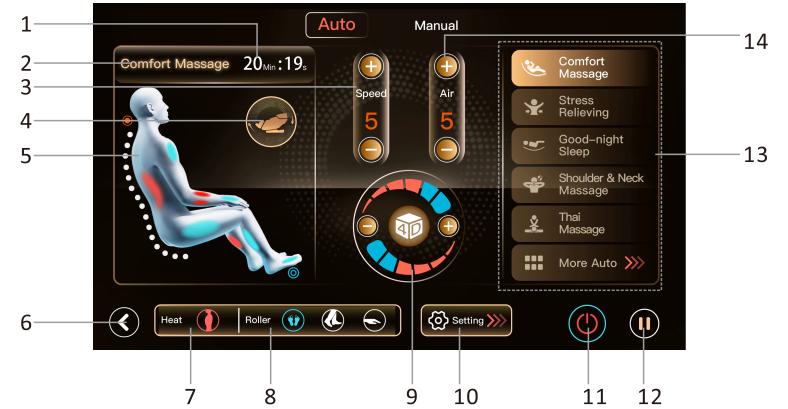


# CHAIR INSTALLATION

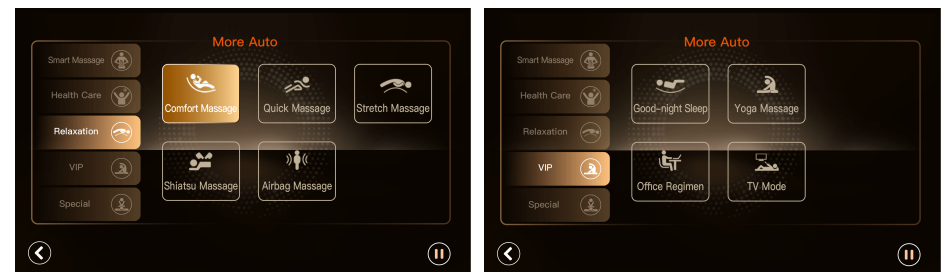
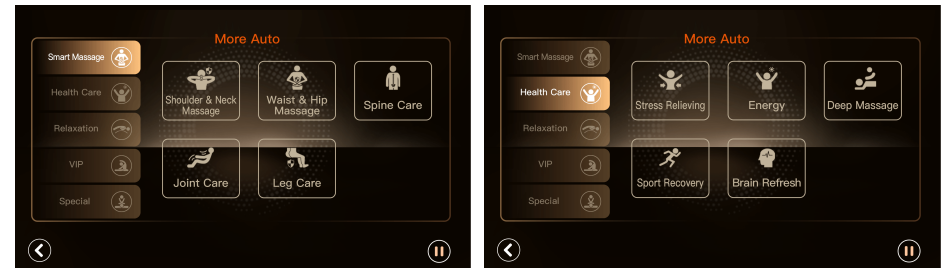
# INSTRUCTIONS



## 4.Auto



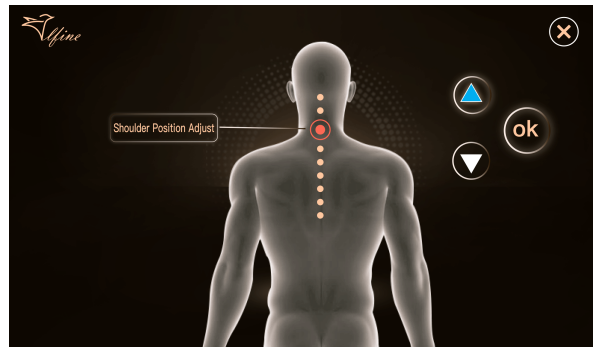
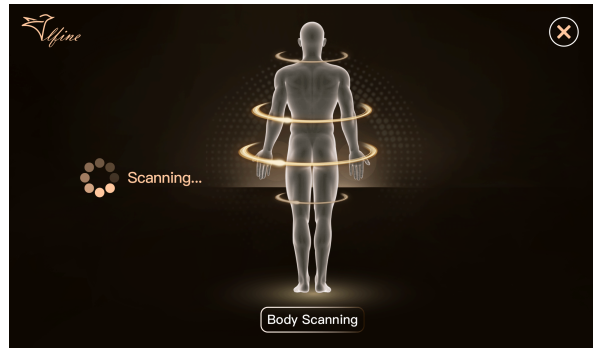
- 1. Time remaining
- 2. Auto program name
- 3. Mechanism speed adjust
- 4. Position adjust
- 5. Mechanism/airbag/heat/roller position
- 6. Return
- 7. Heating switch
- 8. Roller massage position selection area
- 9. 4D strength adjust
- 10. Setting
- 11. Off
- 12. Pause
- 13. Auto modes selection
- 14. Airbag intensity adjust area



# INSTRUCTIONS

# CHAIR INSTALLATION

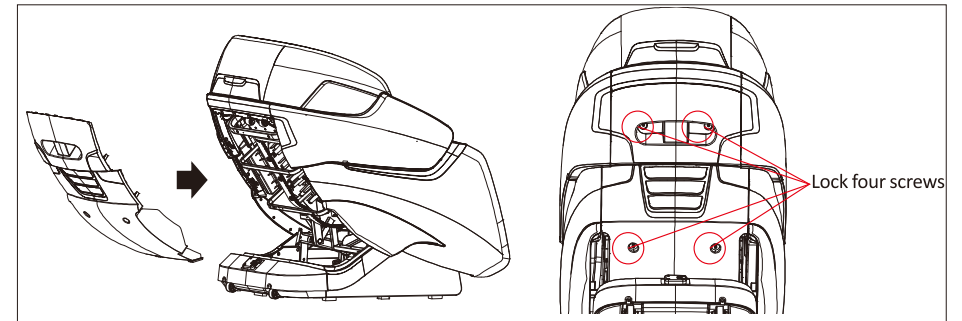
## 3. Detection



1. Latest body scanning technique.
2. When the shoulder position is being tested, click the "⊗" button in the upper right corner, and the shoulder position detection will be stopped immediately, and the shoulder position is based on the default shoulder position to start massage.
3. Within 8 seconds after scanning user can do minor adjustment to the shoulder position or press OK to confirm.

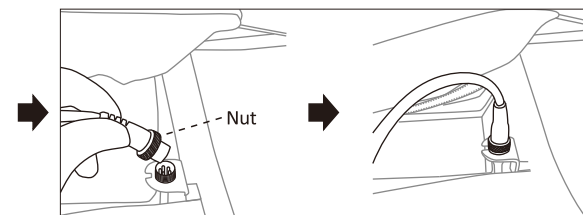
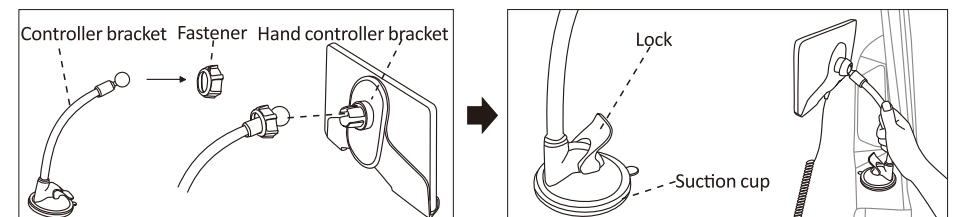
## 3. Install the back cover

- (1) Put the rear lids into the main plastic parts and the four screws that are unscrewed before the specified position are locked.



## 4. Install the hand controller

- (1) Put the top of the bracket into the fastener, then put the round groove at the top of the controller bracket, and then tighten the fastener.
- (2) Open the lock on the controller bracket, tear off the protective film at the bottom of the stent suction cup, and then close the suction cup on the handrail and press it down closure.
- (3) First connect the port of the hand-controller wire with the port of the chair, and finally tighten the nut at the port.

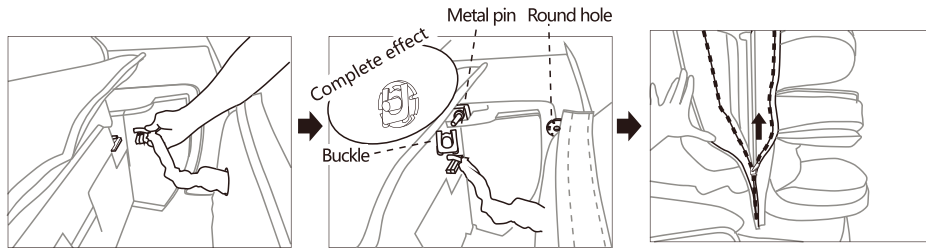


# CHAIR INSTALLATION

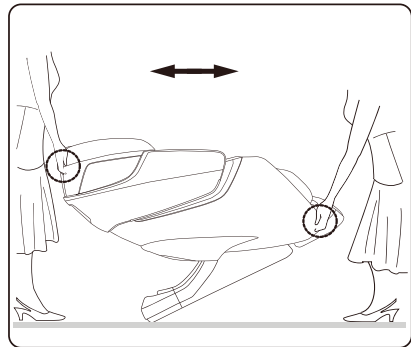
# INSTRUCTIONS

## 5. Install leg-rest

- (1) First connect the trachea of the leg with the bus on the massage chair.
- (2) Lift the leg and insert the round hole in the upper right corner of the leg into the metal pin shaft of the massage chair, and then insert it with a buckle to fix it.
- (3) When installing the left side, first move the whole leg to the right, align the round hole in the upper left corner and the pin of the massage chair, move the lower leg to the left, and then insert the buckle to fix it.
- (4) Pull the holster on the leg to the zipper of the massage chair.
- (5) Finish the leather case.



## 3. Moving the massage chair



To move the massage chair 2 persons are required. One would hold the side panel and lift up as shown in the diagram. The next would press down the back-rest of the chair so that the castor wheels located at the back of the chair touch the floor.

Move the massage chair using the wheels. After moving to the desired location put the massage chair down slowly & carefully.

Note: Do not move the massage chair with user on it.

suggest moving the massage chair with a rung or carpet underneath to prevent any accidental damage to the floor.

## Remote controller interface and description

1. After turning on, the massage chair will automatically back. In the process of backside, click the "⊗" button. The massage chair will stop back and enter the "Automatic page" from the current perspective.



## 2. Setting



1. Screen brightness adjustment area

2. Sound adjustment area

3. Screen closure time selection

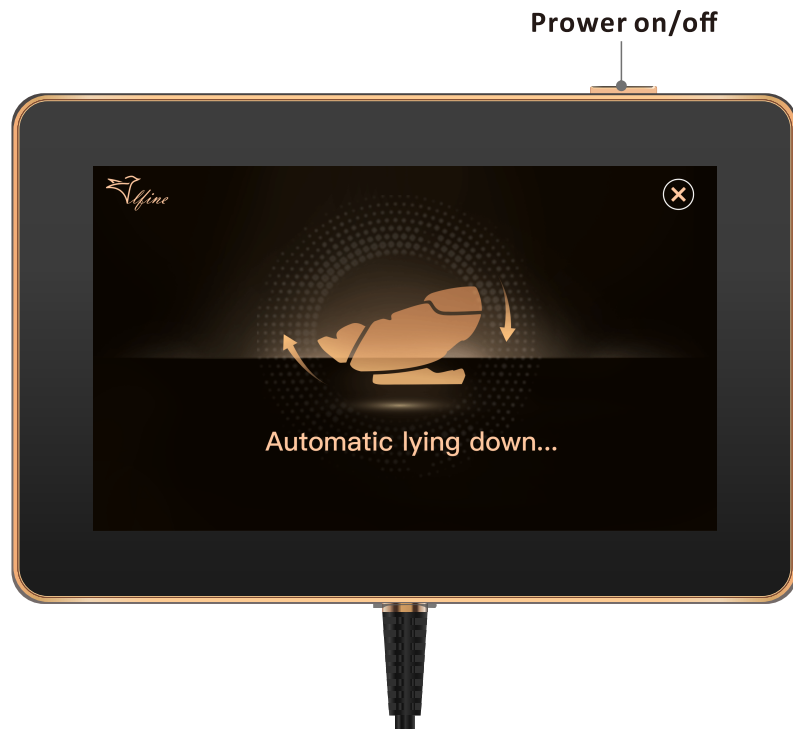
4. Languages selection

5. LED light: on/off

6. Bluetooth: on/off

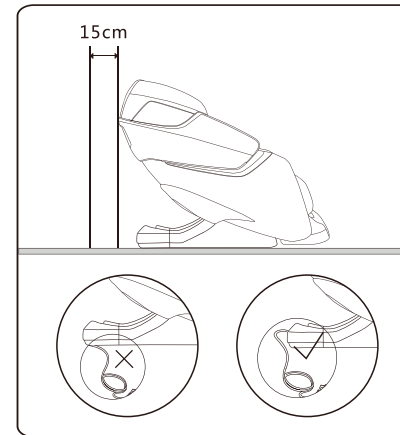
## INSTRUCTIONS

### Remote controller



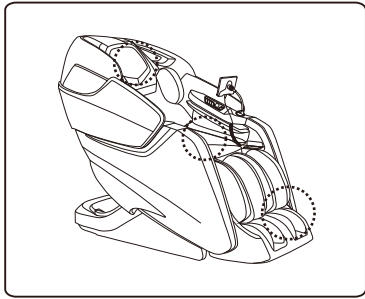
## CHAIR INSTALLATION

### 4. Place the massage chair an open area

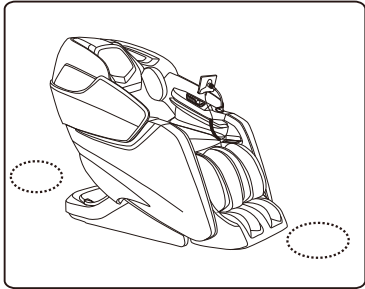


- Allow sufficient space around the chair for recline purposes. 15cm distance for the back side and 40cm in front of the footrest.
- \*In order to avoid the damage of the floor and to reduce the noise, please put area rug under the massage chair.**
- \*Make sure that there are no barriers in front and the back of the massage chair.**
- \*Please do not put it in wet or uneven floor.**
- \*To avoid signal interference, please place it 4 feet away from AV,TV, and radio.**

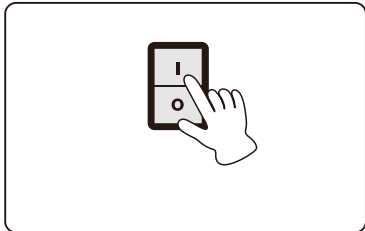
## BEFORE USE



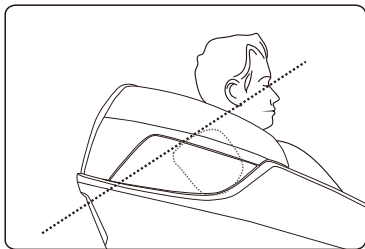
- 1. Make sure the product is in good condition and proper working order.**
  - Check the headrest and backrest pad.
  - Inspect the power plug.
  - Make sure the footrest is in its upright original position in order to prevent damage.



- 2. Check the surrounding environment**
  - Ensure there are no people, pets, or objects obstructing the massage chair.



- 3. Plug in the massage chair power cord.**
  - Connect the power cord.
  - Turn ON the power switch, located on the right side of the massage chair.



- 4. Adjust the position of the headrest.**
  - Adjust the headrest until it is in a comfortable position.

## INSTRUCTIONS

### Shortcut key function chart

