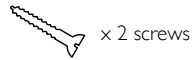


# Oblique Wall Mirror

## Fitting instructions



× 2 screws



× 2 wall plugs

### You will also need:

Drill with 6.0mm masonry drill bit  
Medium cross head screwdriver  
Tape measure  
Spirit level  
Pencil

### Important information, please read carefully before you start:

- If in doubt about any of these instructions, consult a qualified trades person.
- Ensure that the wall is of a suitable strength and construction and that it is flat and even. You may need help to hold the item during marking and fixing. Ensure you will be able to remove your guide marks from the surface once the product is in position.
- The wall plugs supplied are suitable for solid stone or brick walls. For other wall types (eg plasterboard), use appropriate wall plugs.
- Before drilling, check for hidden pipes or power cables.
- Take care when using power tools, especially near water: The use of a residual current device is recommended. If in doubt refer to drill manufacturer's instructions.
- If drilling glazed tile surfaces, use a tile/ceramic drill bit for this purpose.
- **Handy tip** - using a piece of masking tape on the wall helps prevent the drill from slipping.
- Always wear suitable eye protection when drilling.
- After fixing, check the fitting at regular intervals to ensure that the screws have not become loose.
- Please retain this leaflet for future reference.

### Warning:

Please take extra care when fitting that you position the product correctly before attaching it to the wall.

These products should always be fitted strictly in accordance with the fitting instructions. Robert Welch Designs Ltd cannot be held liable for damages if these instructions are not adhered to strictly.

Please contact Robert Welch Designs if you have any queries:  
**+ 44 (0) 1386 840880**  
[enquiries@welch.co.uk](mailto:enquiries@welch.co.uk)  
[robertwelch.com](http://robertwelch.com)

### Care and maintenance:

- Clean the mirror only with a soft damp cloth.
- Do not use any abrasive cleaners or solvents when cleaning this product.
- Do not allow any liquids to stand on any part of the mirror.

### NOTE. When handling glass mirror products:

- Do not place in a shower enclosure or above a bath.
- Do not place very hot or very cold items against or in close proximity to the glass mirror.
- Do not strike the glass mirror with hard or pointed objects.
- Do not attempt to cut the glass mirror.

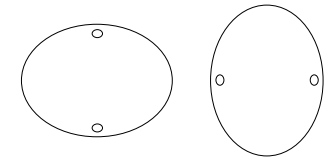
Glass conforms to BS6206 Class B.

Products and trade marks of Robert Welch Designs Ltd are protected by patent, design and trade mark registrations. For full details, please visit [www.robertwelch.com/iprights](http://www.robertwelch.com/iprights)

### Please read carefully:

1

Decide whether the mirror is to be hung portrait or landscape.

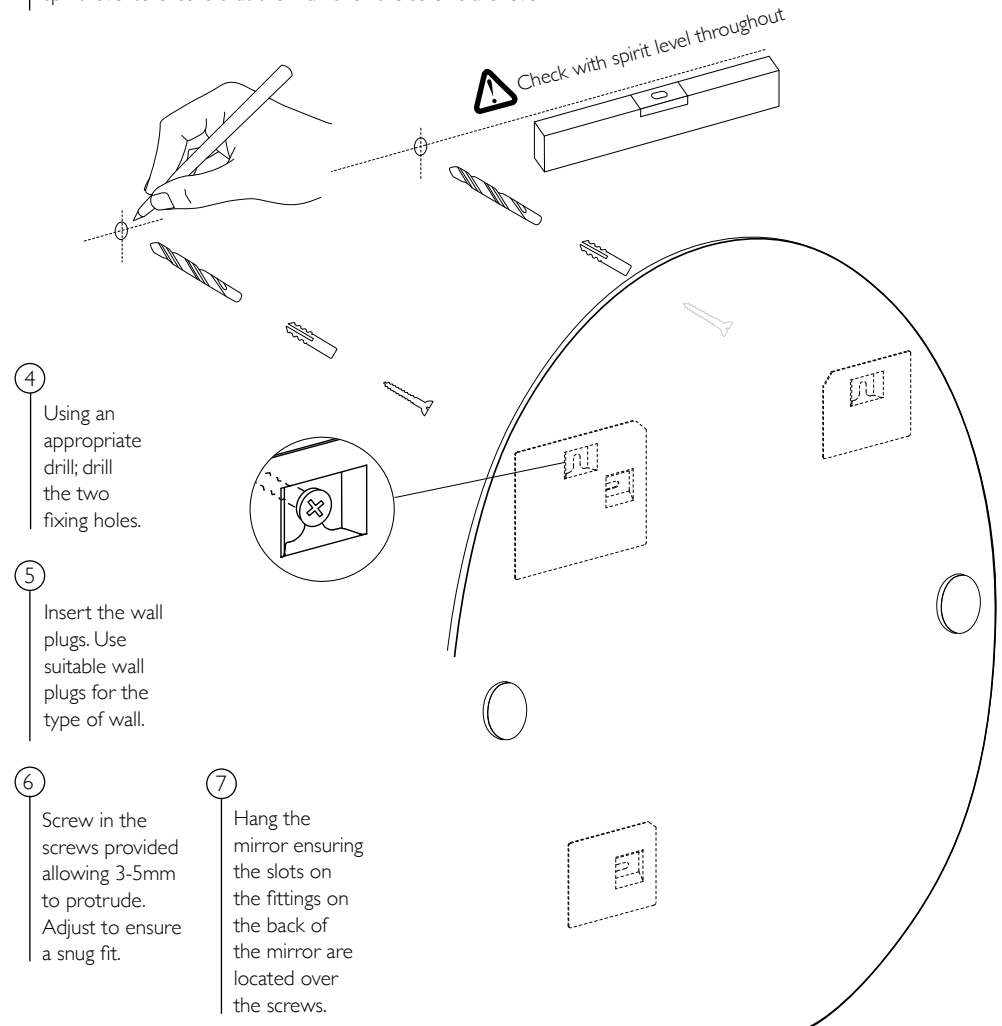


2

Measure the distance between the centre of the slots on the fittings on the back of the mirror.

3

Transfer the dimensions to the wall at the appropriate height using a spirit level to ensure that the marks for the screws are level.



4

Using an appropriate drill; drill the two fixing holes.

5

Insert the wall plugs. Use suitable wall plugs for the type of wall.

6

Screw in the screws provided allowing 3-5mm to protrude. Adjust to ensure a snug fit.

7

Hang the mirror ensuring the slots on the fittings on the back of the mirror are located over the screws.