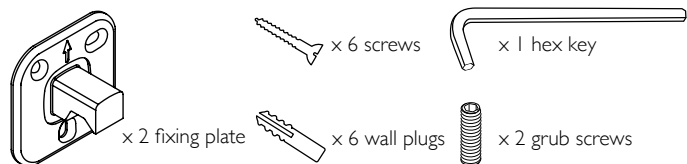


## Fitting instructions

### Included in the box:



### You will also need:

Drill with 5.5mm masonry drill bit  
Medium cross head screwdriver  
Tape measure  
Spirit level  
Pencil

### Important information, please read carefully before you start:

- If in doubt about any of these instructions, consult a qualified trades person.
- Before starting, ensure that the wall is of a suitable strength and construction and that it is flat and even. You may need help to hold the item during marking and fixing. Ensure you will be able to remove your guide marks from the surface once the product is in position.
- The wall plugs supplied are suitable for solid stone or brick walls. For other wall types (eg plasterboard), use appropriate wall plugs.
- Before drilling, check for hidden pipes or power cables.
- Take care when using power tools, especially near water. The use of a residual current device is recommended. If in doubt refer to drill manufacturer's instructions.
- If drilling glazed tile surfaces, use a tile/ceramic drill bit for this purpose.
- **Handy tip** - using a piece of masking tape on the wall helps prevent the drill from slipping.
- Always wear suitable eye protection when drilling.
- After fixing, check the fitting at regular intervals to ensure that the screws have not become loose.
- Please retain this leaflet for future reference.

#### Warning:

Please take extra care when fitting that you position the product correctly before attaching it to the wall.

These products should always be fitted strictly in accordance with the fitting instructions. Robert Welch Designs Ltd cannot be held liable for damages if these instructions are not adhered to strictly.

Please contact Robert Welch Designs if you have any queries:

Lower High Street Chipping Campden Gloucestershire GL55 6DY UK.  
+ 44 (0) 1386 840522  
email: [help@robertwelch.com](mailto:help@robertwelch.com)  
[www.robertwelch.com](http://www.robertwelch.com)

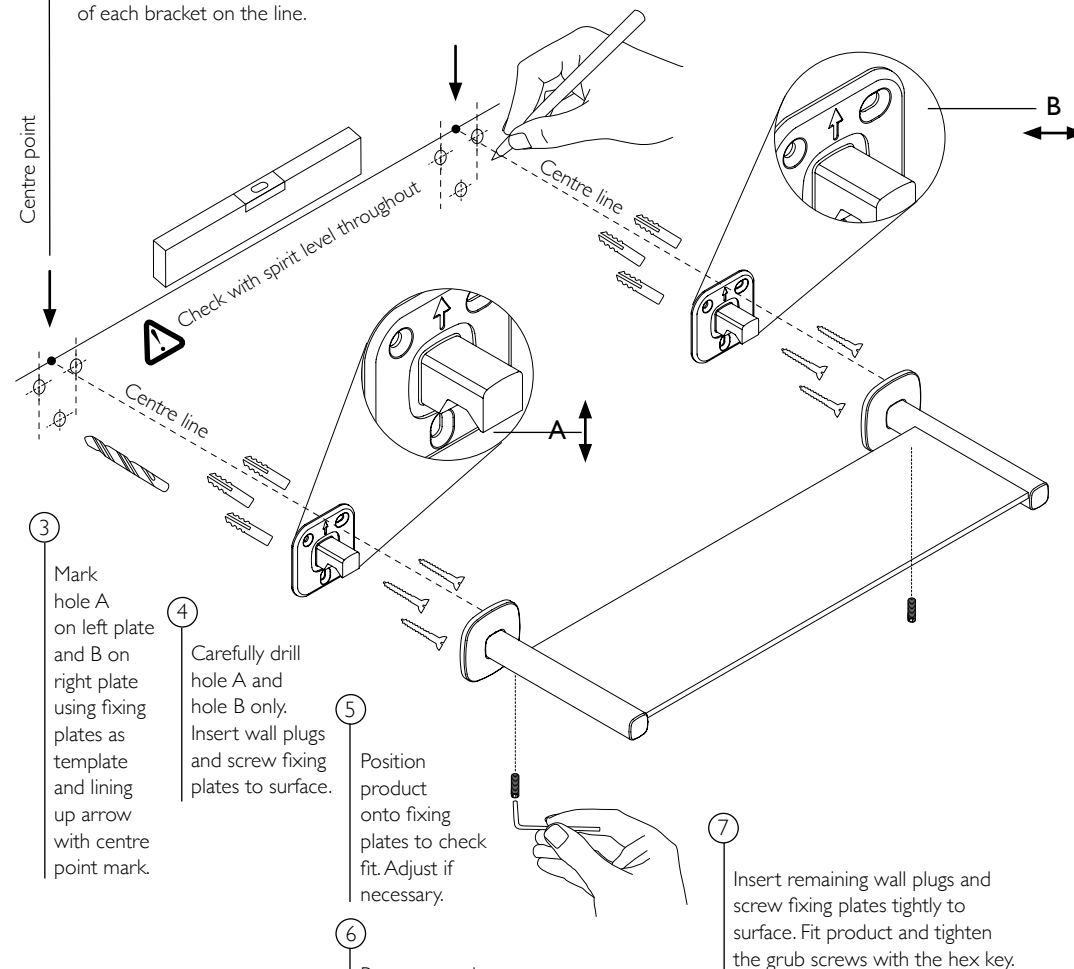
### NOTE. When handling glass products:

- Do not place in a shower enclosure or above a bath.
- Do not place very hot or very cold items against or in close proximity to the glass.
- Do not strike the glass with hard or pointed objects.
- Do not sit or stand on the glass surface.
- Do not attempt to cut the glass.
- The glass shelf is tempered to conform to BS6206. If the glass shelf becomes chipped or broken, ensure that it is replaced with the same standard of toughened glass.

### Please read carefully:

1 Unscrew the fixing plates from the brackets using the hex key. Leaving the two black silicon sleeves on the ends of the glass, assemble the product by positioning the glass shelf inside the two connecting brackets.

2 To locate, draw a horizontal line using a spirit level. Using the product as a template, mark the centre point of each bracket on the line.



NOTE: Do not drill holes through the fixing plate