

Two Wests & Elliott Modular Cold Frame

R20 (10)



Main Frame Components

Part	Description	Size	Qty
A, Angle	Frame	1170mm	3
B, Angle	Side Frame	609mm	4
C, Angle	Back Upright	610mm	2
D, Angle	Front Upright	550mm	2
E, Sheet	Hinge Brace	1170mm	1

Panels

Description	Size	Qty
Back	453mm x 1160mm	1
Front	392mm x 1160mm	1
Sides	600mm x 392mm/453mm	2
Lid	1111mm x 556mm	1

Hinged Lid

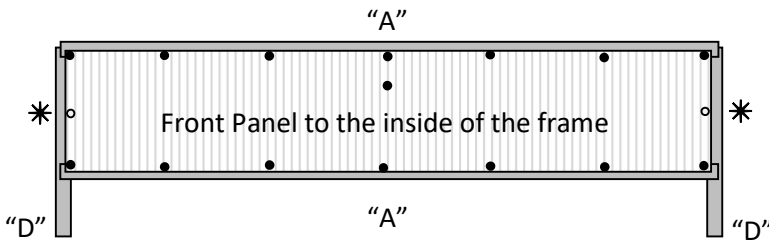
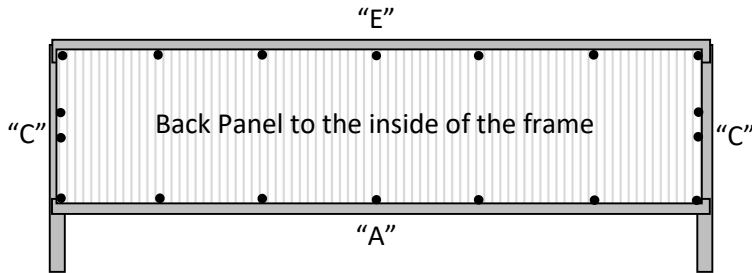
Part	Description	Size	Qty
F, Hinge	Hinge	1170mm	1
G, Sheet	Lid Sides	565mm	2 (1 x left & right)
H, Angle	Lid Side Under Brace	500mm	
I, Sheet	Front Edge	1170mm	1
J, Lid Support Assembly	Lid Support Assembly		2
Nuts & Bolts			84

Please check all components are correct

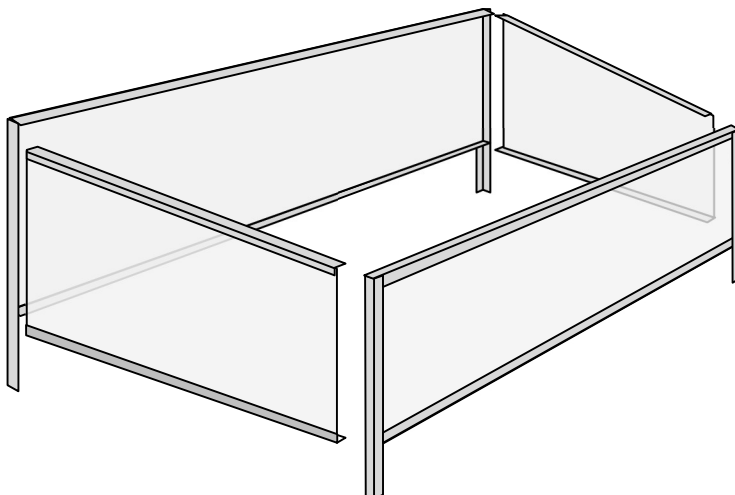
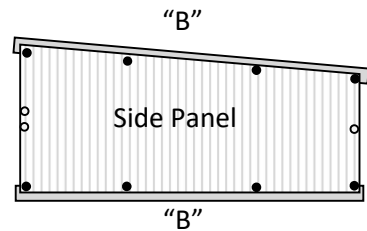
Remove the polythene film from both sides of the panels. Please note that the polycarbonate is U.V. treated on both sides so they can be inserted either way.

Assemble both the Front and Back sections as shown, finger tight only, with the panels to the inside of the framework, leaving the bolt and nut out of the central hole marked * on the front panel. Fasten with the bolt heads to the outside and nuts to the inside.

Please note that if you have ordered the model to stand on hard ground or on a bench, the uprights "C" & "D" measure 453mm and 392mm respectively.



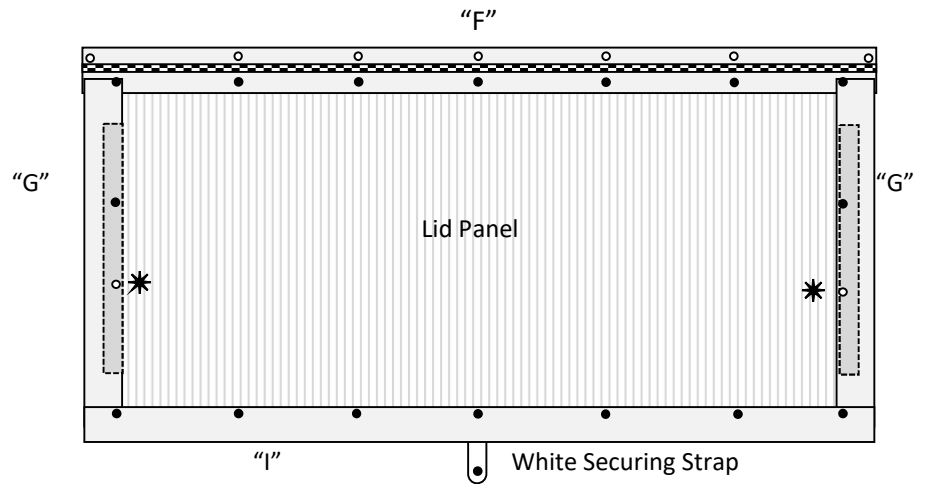
Assemble one left hand and one right hand side section as shown



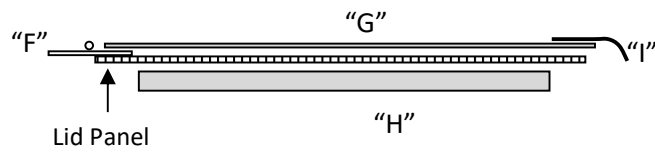
Once all four sections are assembled these can then be connected to form the main body of the Cold Frame.

Assemble the Lid as shown ensuring that the components are layered in the correct order as shown below. The Lid Brace should be bolted to the underside of the Lid Panel.

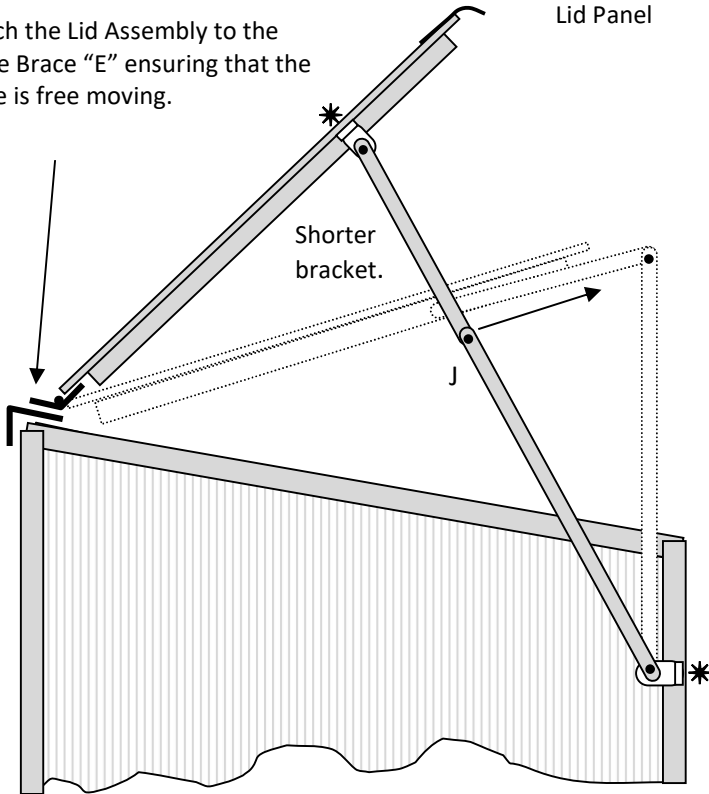
Leave the lower, central bolt and nut out at this point. *



Side view of the lid assembly.

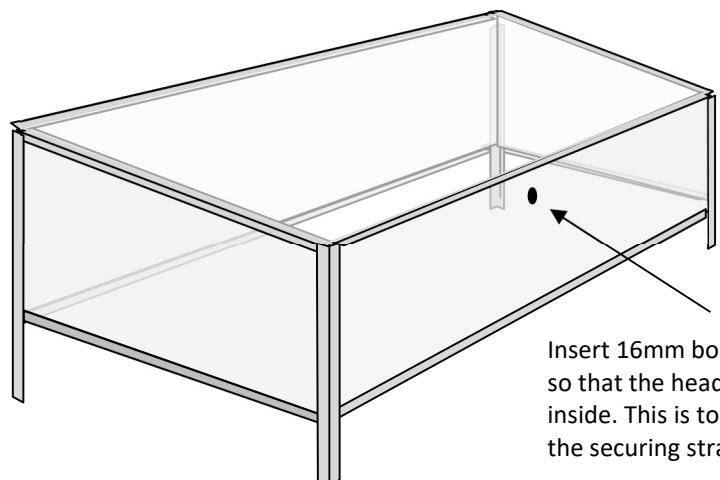


Attach the Lid Assembly to the Hinge Brace "E" ensuring that the hinge is free moving.



The Lid Support Assembly can be bolted in positions where the holes were left vacant in the Lid and the Front panel. * Please ensure that the shorter length of the bracket is upper most.

This shows the lid in the fully open and half open position. When in these positions it is important to tighten the wing nuts to help reduce wind buffeting.



Insert 16mm bolt and nut so that the head is on the inside. This is to fasten the securing strap.