

Modular Cold Frame

Extension

R19(11)



Components

Part	Description	Size	Qty
A, Angle	Frame	1170mm	3
B, Angle	Side Frame	609mm	1
B1, Tee	Side Frame	609mm	1
C1, Tee	Back Upright	610mm	1
D1, Tee	Front Upright	550mm	1
E, Sheet	Hinge Brace	1170mm	1
F, Bar	Tie Bars	280mm	2

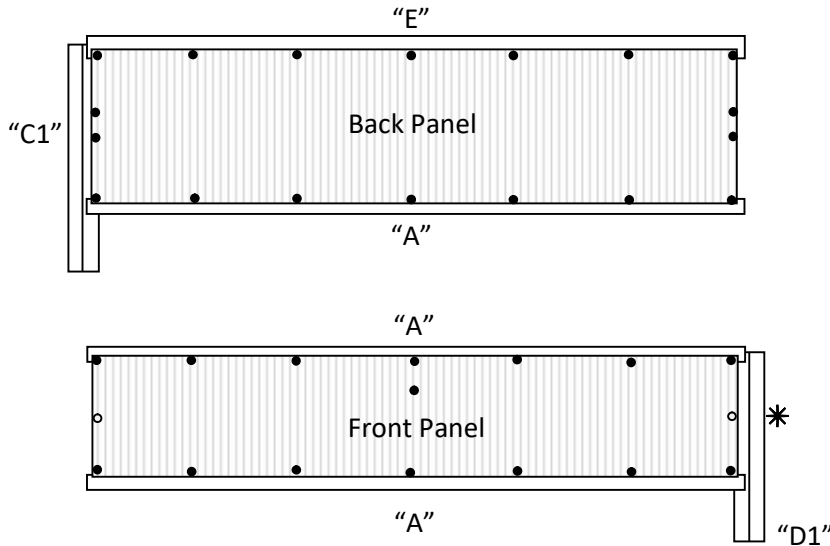
Panels

Description	Size	Qty
Back	460mm x 1160mm	1
Front	380mm x 1160mm	1
Lid	1111mm x 556mm	1
Nuts & Bolts		60

Hinged Lid

Part	Description	Size	Qty
G, Hinge		1170mm	1
H, Sheet	Lid Sides	565mm	2 (1 x left & right)
I, Angle	Lid Side Under Brace	500mm	
J, Sheet	Front Edge	1170mm	1
K,	Lid Support Assembly		2

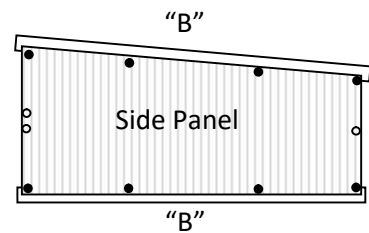
Please check all components are correct



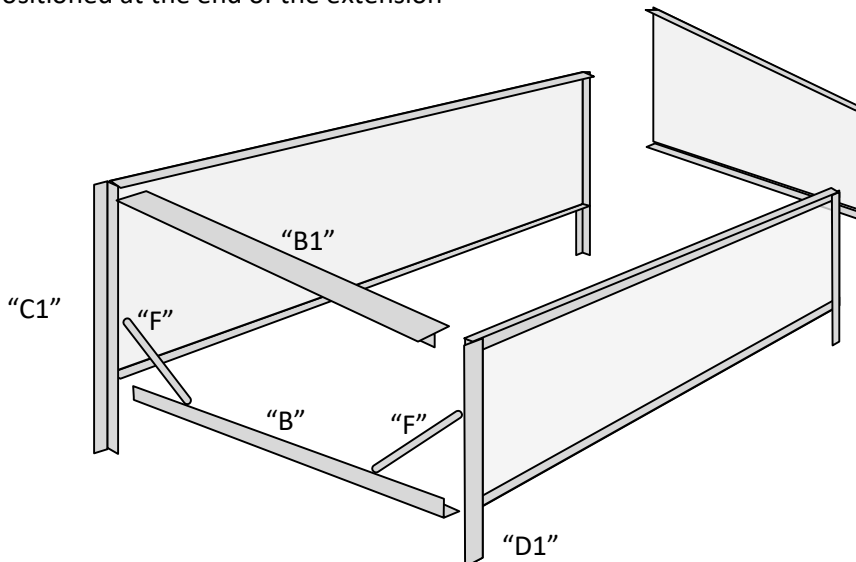
Remove the polythene film from both sides of the panels. Please note that the polycarbonate is U.V. treated on both sides so they can be inserted either way.

Assemble both the Front and Back sections as shown leaving the bolt and nut out of the central hole on the front panel. *

Assemble finger tight only, with the panels to the inside of the framework and the bolt heads to the outside.



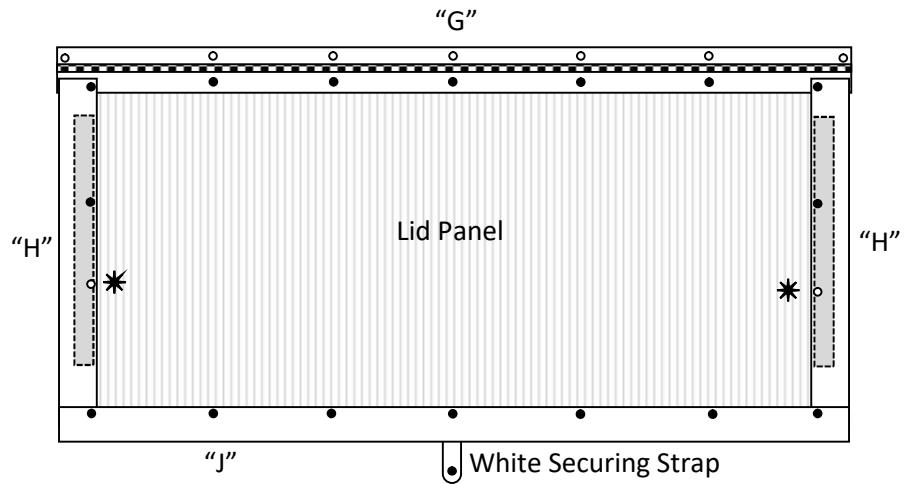
If being assembled with a standard cold frame, the end panel and side frames will be included in those components. If bought separately the existing end panel needs to be removed and repositioned at the end of the extension



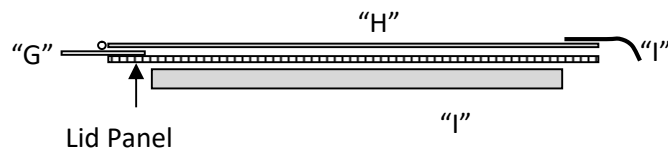
Once all four sections are assembled these can then be connected together to form the main body of the Cold Frame.

Assemble the Lid as shown ensuring that the components are layered in the correct order as shown below. The Lid Side Brace should be bolted to the underside of the Lid Panel.

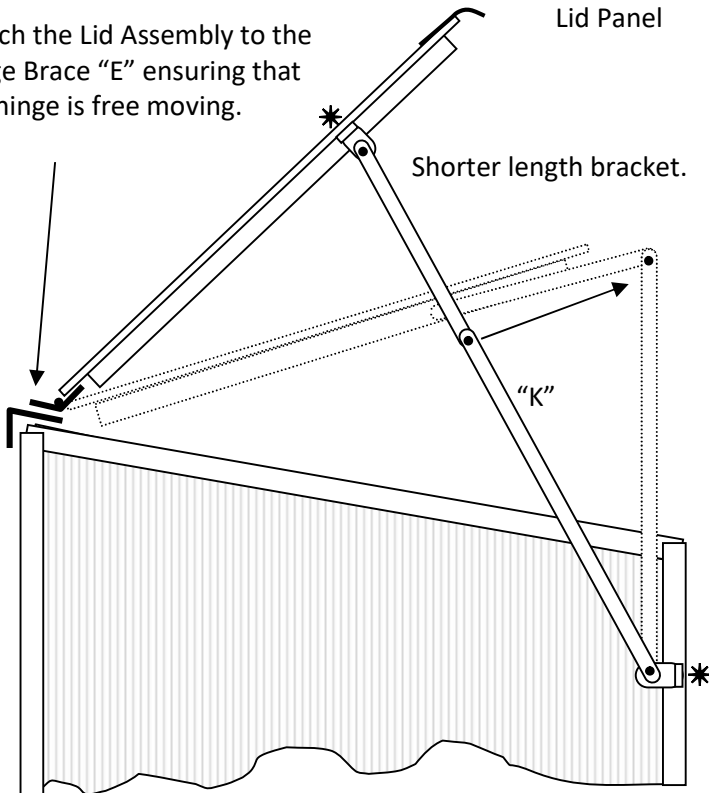
Leave the lower, central bolt and nut out at this point. *



Side view of the lid assembly.

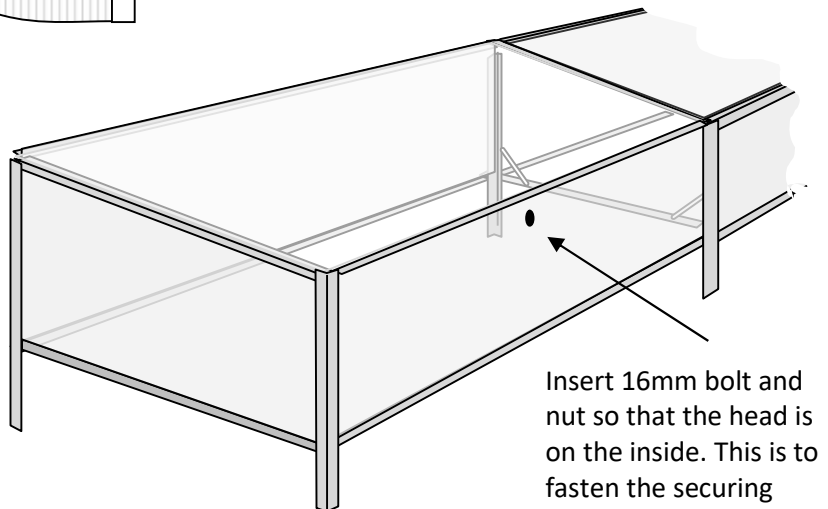


Attach the Lid Assembly to the Hinge Brace "E" ensuring that the hinge is free moving.



The Lid Support Assembly is bolted in positions where the holes were left vacant in the Lid and the Front panel when assembled. * Please ensure that the shorter length of the bracket is upper most.

This shows the lid in the fully open and half open position. When in these positions it is important to tighten the wing nuts to help reduce wind buffeting.



Insert 16mm bolt and nut so that the head is on the inside. This is to fasten the securing strap.