

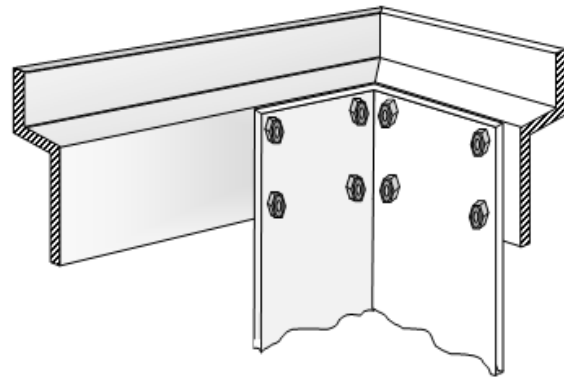
Q4a

Stand for Tank Watering Kit



Components

Top Frame	310mm	x2
Top Frame	220mm	x2
Corner Legs	406mm	x4
Nuts & Bolts		x32
Top Plate		x1



Attach the four top frame “Z” sections to the outside of the four corner legs finger tight only.

When all nuts and bolts are in, square up the frame and tighten fully.

Place the plate into the frame