

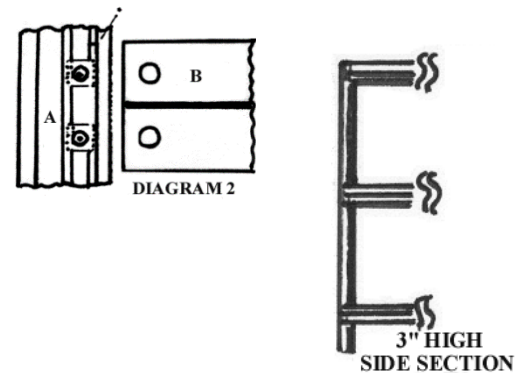
VERSATILE SHELVING D1(01)
Assembly Instructions



COMPONENTS

Components	Height	
	3ft high	4ft high
A Upright	4	4
B Horizontal Length Bar	6	8
C Horizontal Depth Bar	6	8
Nuts & Bolts	48	64
Trays / Sets of Slats	3	4

PLEASE NOTE: 'B' measures just under the length of the model and 'C' just under the width.



SLATTED OPTION: Number of Slats Per Shelf

Depth	Length				
	24"	30"	36"	42"	48"
12"	4 @ 23"	4 @ 29"	4 @ 35"	12 @ 11"	14 @ 11"
16"	5 @ 23"	5 @ 29"	5 @ 35"	12 @ 15"	14 @ 15"
20"	6 @ 23"	6 @ 29"	6 @ 35"	12 @ 19"	14 @ 19"

(For shelves up to 36" long the slats lay length ways; 42" and 48" long, depth ways).

1. Please check the components.
2. Decide at what level you wish to set the shelves - it might be worth having them close together at the bottom (for smaller items) and wider apart at the top.
3. Mark * the inside of each upright with these levels so that you know where to attach the horizontal bars.
4. Take two uprights and attach the horizontals 'B' (3,4 or 5 depending on the height of your shelving) to make a side. Slide sufficient bolts down each channel (2 per shelf) - dia. 1.
5. Line up the horizontals with the marks you have made and slide the bolts to match up with the holes in the horizontals (dia. 2). Locate the horizontals over the bolt stems and pull them back to maximise the gap between the end of "B" and the inside of the upright. This allows you to slide the bolts past if necessary. Fasten them with the nuts
6. Repeat to make the other end.
7. Join the two sides with the horizontal length bars 'C'. Position the slot in bar 'C' over the flat of 'B', then slide 'C' onto the bolt stems - dia. 3.
8. Check that the slats/trays are a snug fit before finally tightening up.
9. Position the trays/slats - the trays can go in either way up (giving you either a tray or a flat surface).

