

CLASSIC



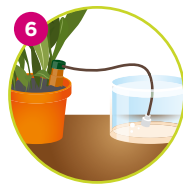
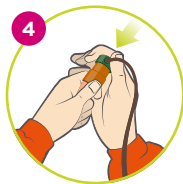
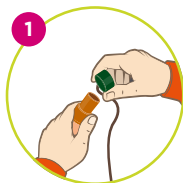
 **Blumat®**

Installation-Tips



VACATION

IDEAL



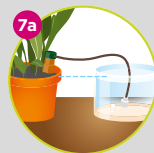
Watering system for house plants and balcony plants:

When installed correctly, Blumat draws the water automatically from the container.

Observe plants for 1 week before going on vacation and use several Blumat inserts for each plant if necessary.

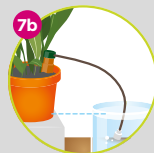
Provide a sufficiently large container of water. Blumat must also be refilled if it is empty.

Clean once a year with a brush and some hot water. Sand down the outside of the cone with sandpaper.



Classic
ca. 75ml/24h

ClassicXL
ca. 125ml/24h



Classic
ca. 50ml/24h

ClassicXL
ca. 75ml/24h