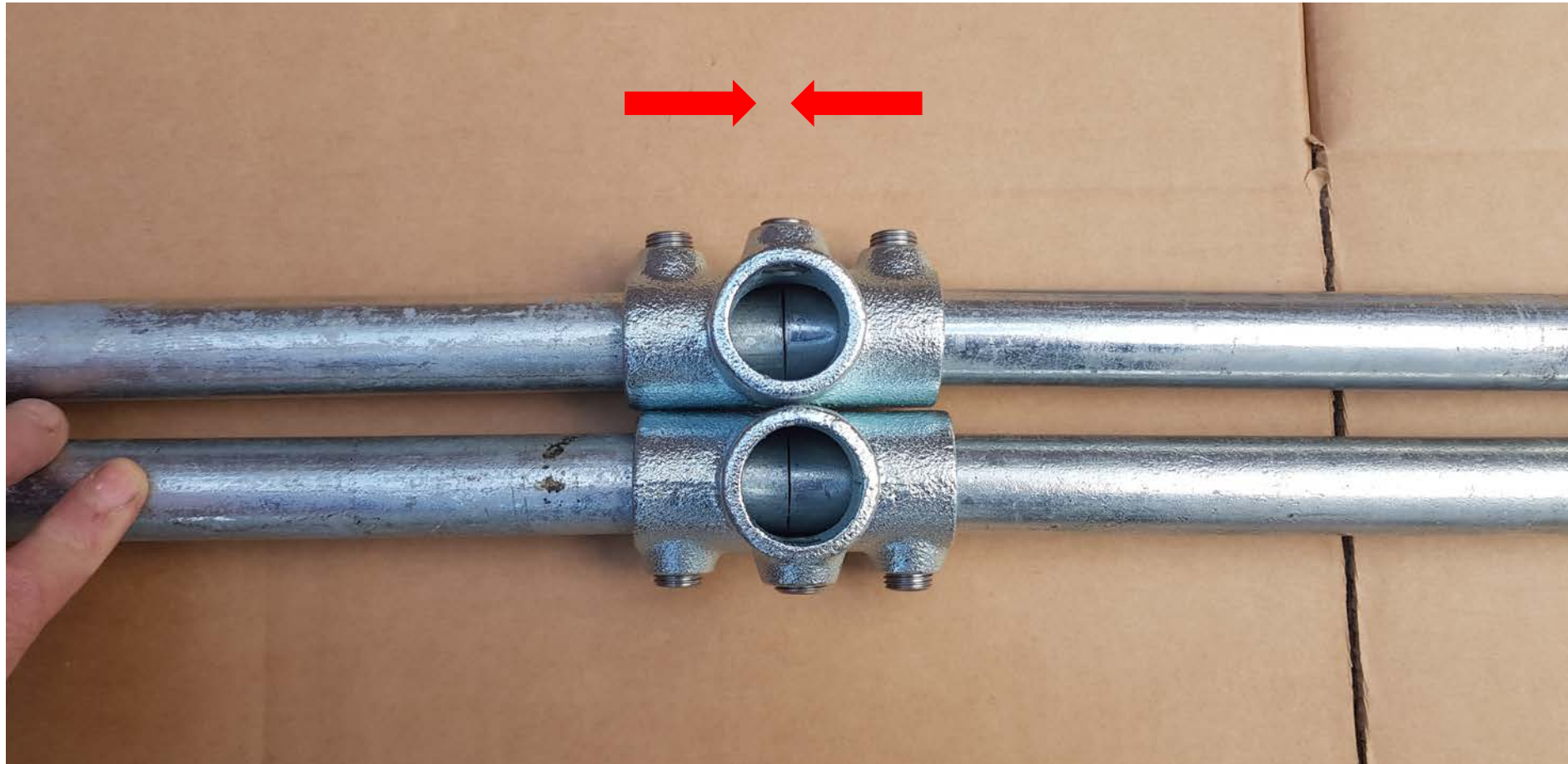


Lay out your frame components.



The above shows the first of two frames (1/2).

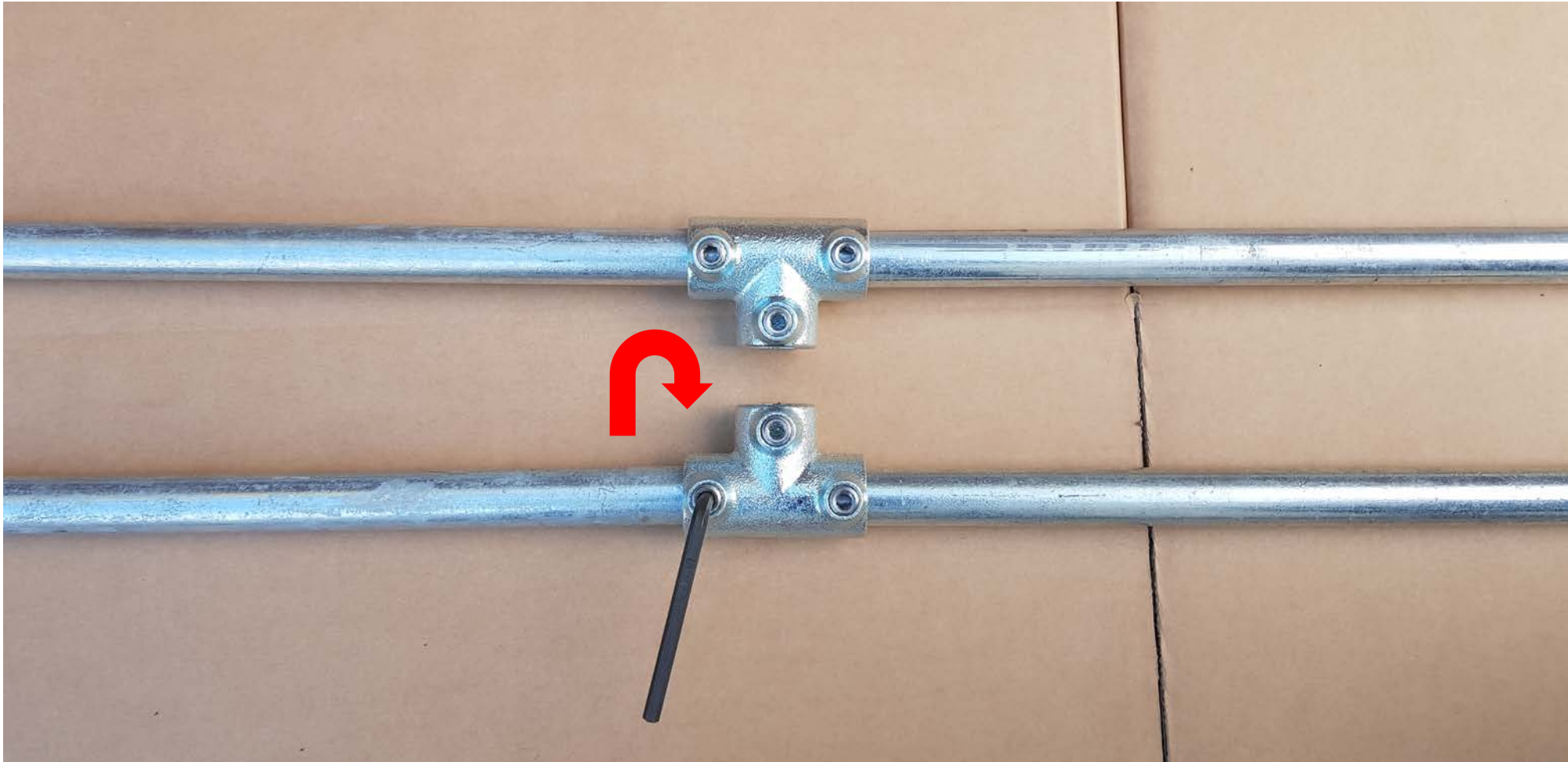
Disassemble your 'T' piece. Align "long bars" to meet in the center.



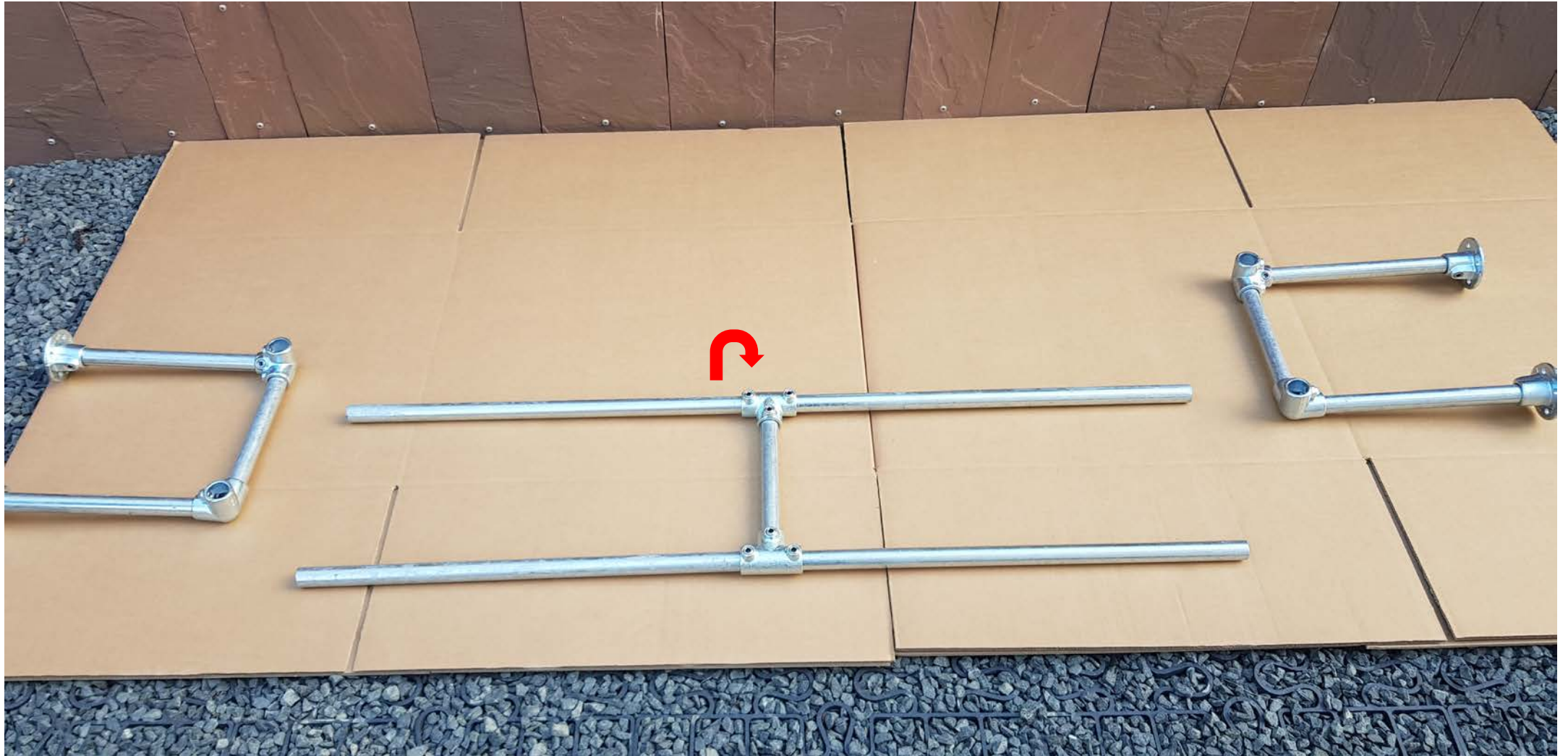
Tighten set-screws on one side.



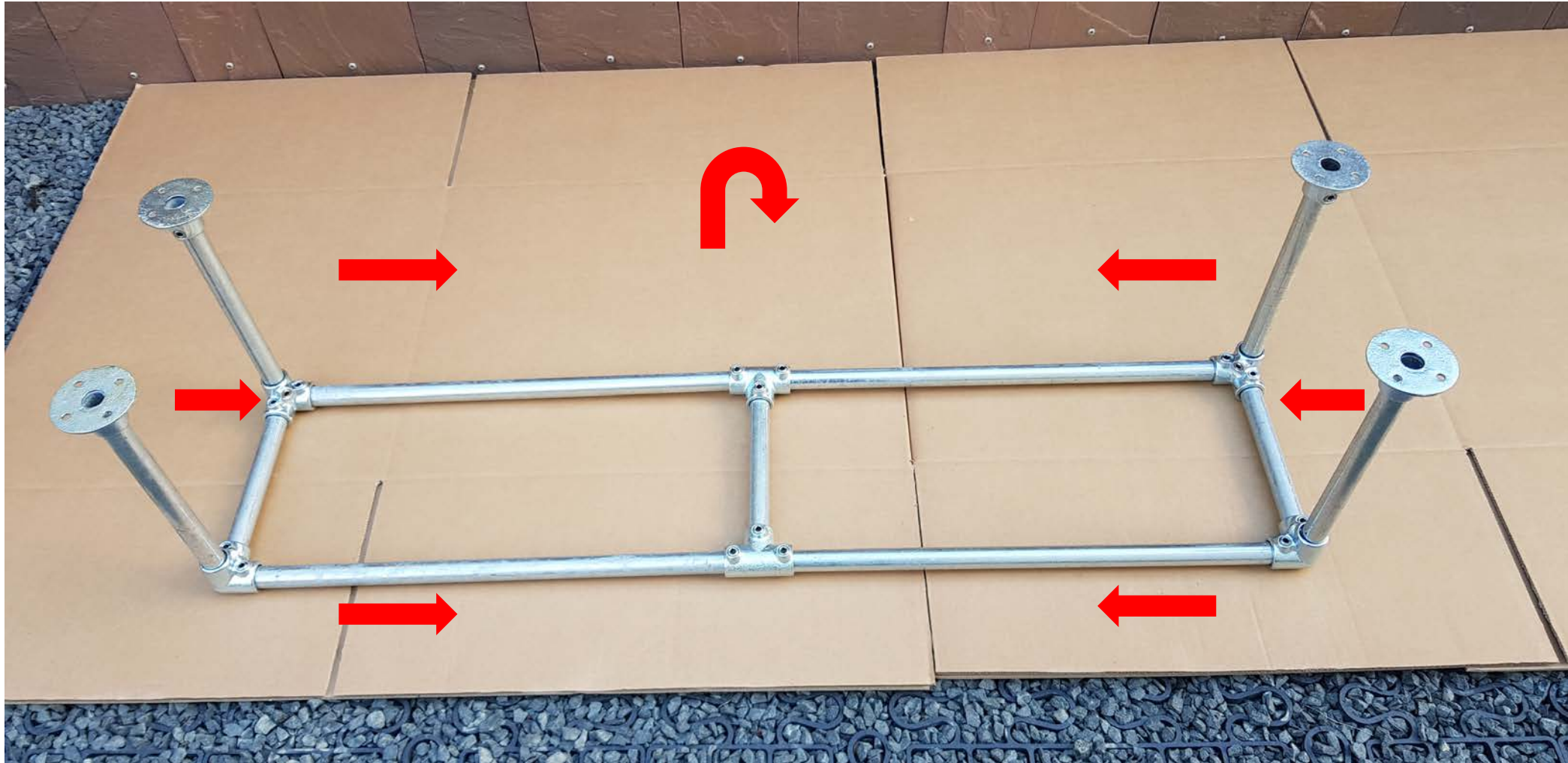
Tighten set-screws on the other side.



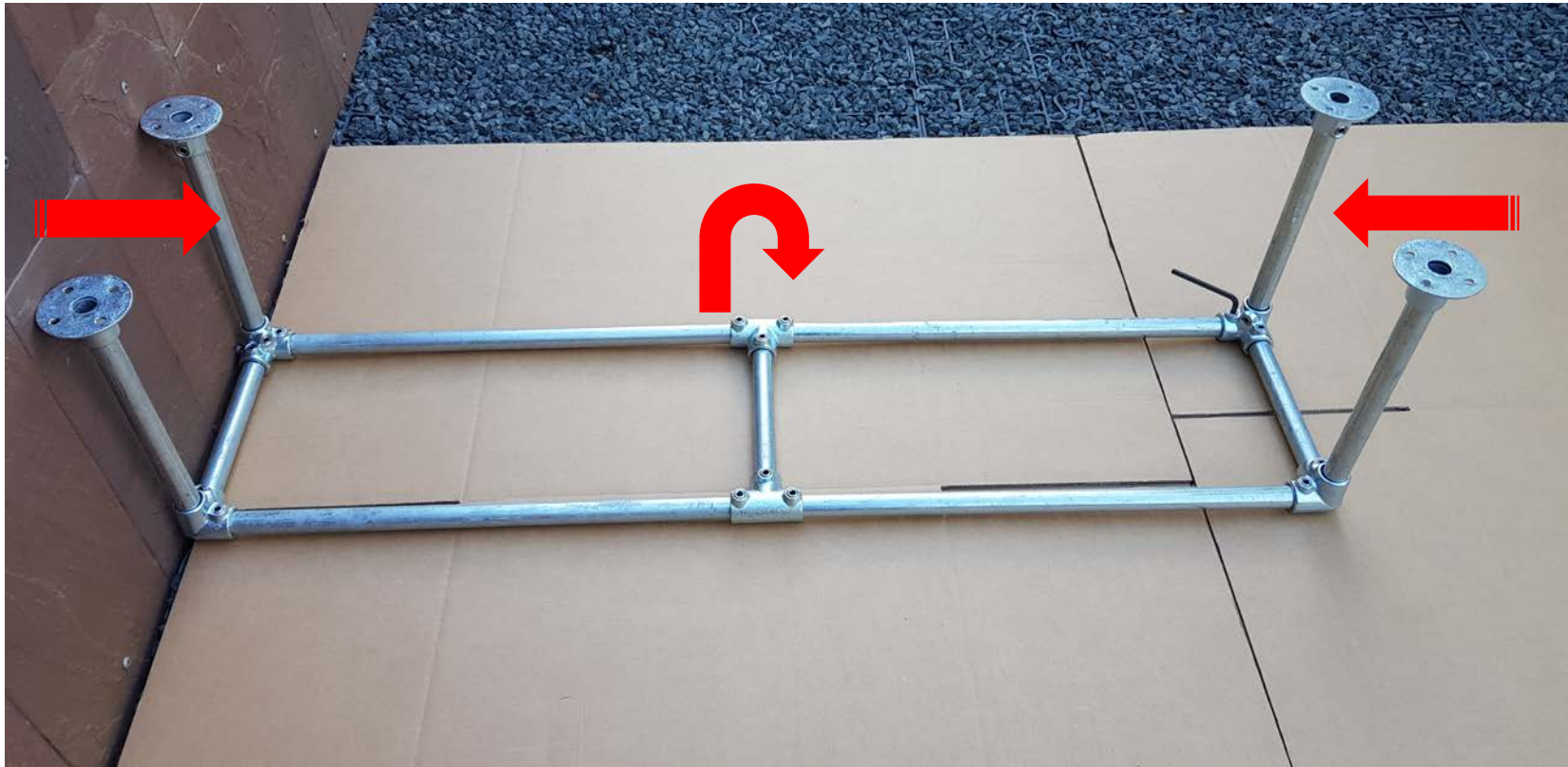
Join “cross member” and tighten set-screws.



Join leg pieces and push together hard.
Tighten all set-screws.



Lay the frame on its back and pull legs inward slightly, tighten all set-screws in the cross member.



Tighten your set-screws as firmly as possible as this ensures minimal sag in your bars. Pulling in the frame legs while you do so also helps.

Your first frame is now complete.



Set-screws must face downwards.

Repeat for second frame and
place next to the first.



Adjust your flood-plates.



Place your rear containers on the frames.



Place your front containers on the frames.



Large holes (for the manifold) should face towards you.

For your drainage, fill the membrane with loose aggregate (gravel).



Next, lay membrane and geo-textile in containers.



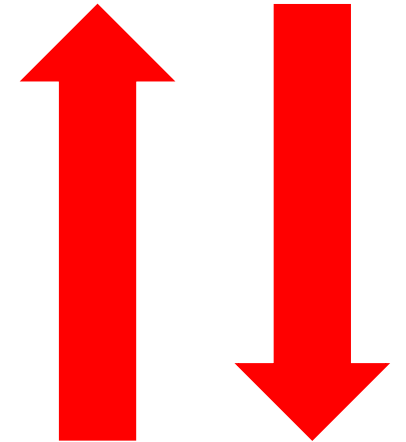
STOP! Now backfill your containers with your growing media (learn to make this in the Owner's Area)

For ease of use, we've chosen to miss out this step in these assembly instructions.

Unscrew brown fittings and remove green inserts from your manifold.



This can face in either direction, towards your tap.



Place manifold into pre-drilled holes.



Thread irrigation line through pre-drilled holes.



**Barbed (stoppered)
end at the rear of your
planter.**

Place brown fitting onto the pipe, as shown.



Insert green 'insert' into the irrigation line.



Soaking the end of the lines in warm/hot water helps with this process.



Join brown fitting to your manifold. Screw tightly and repeat for remaining three lines.



Push containers together, tight.



Attach ratchet clamps to the barbed (stoppered) end of the irrigation lines.



Finally, pull containers apart (taunting all irrigation lines). The ratchet clamp should now be 'flush' with your containers.

