

It's arrived!



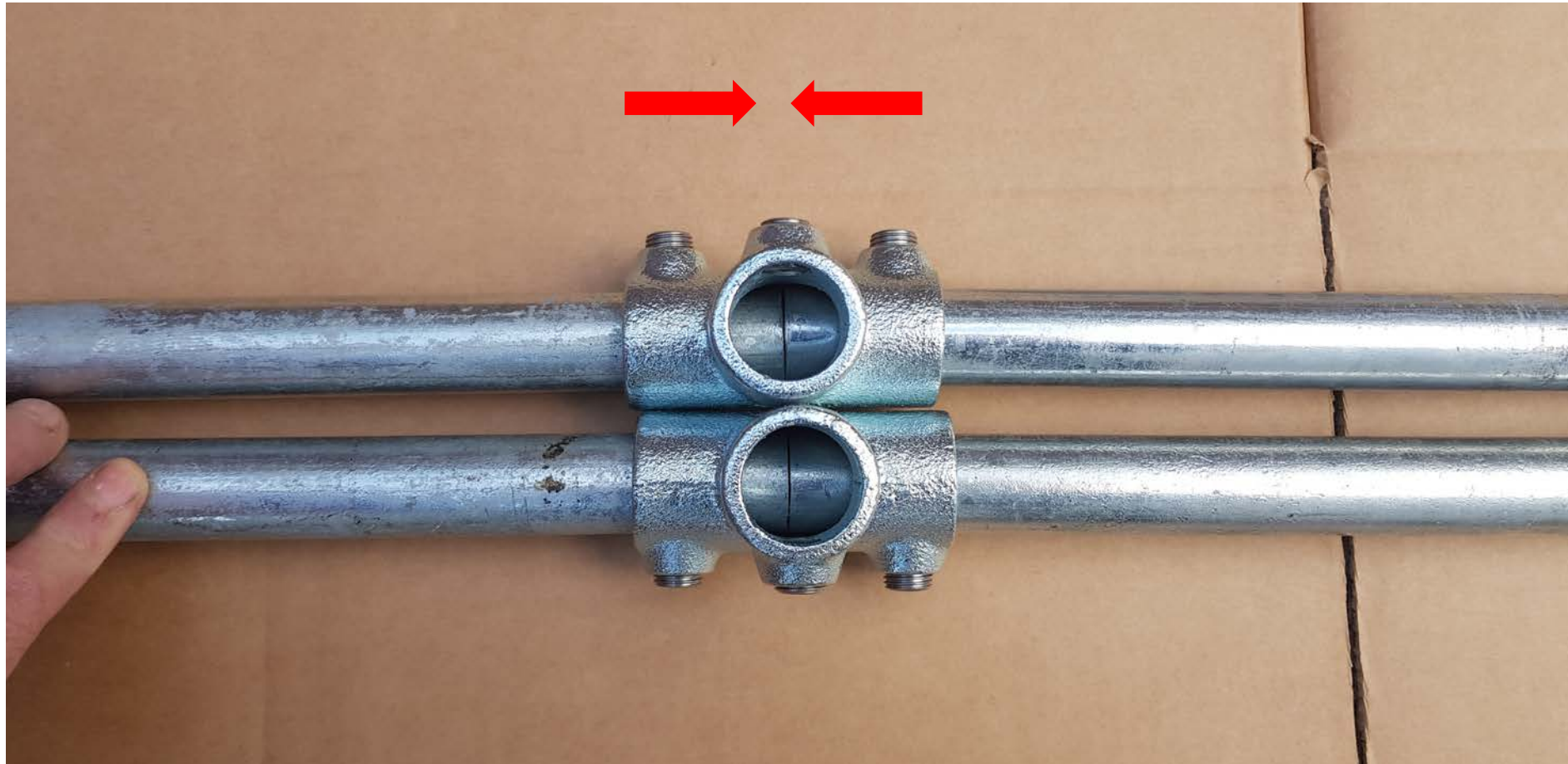
Check your components.



Lay out your frame components.



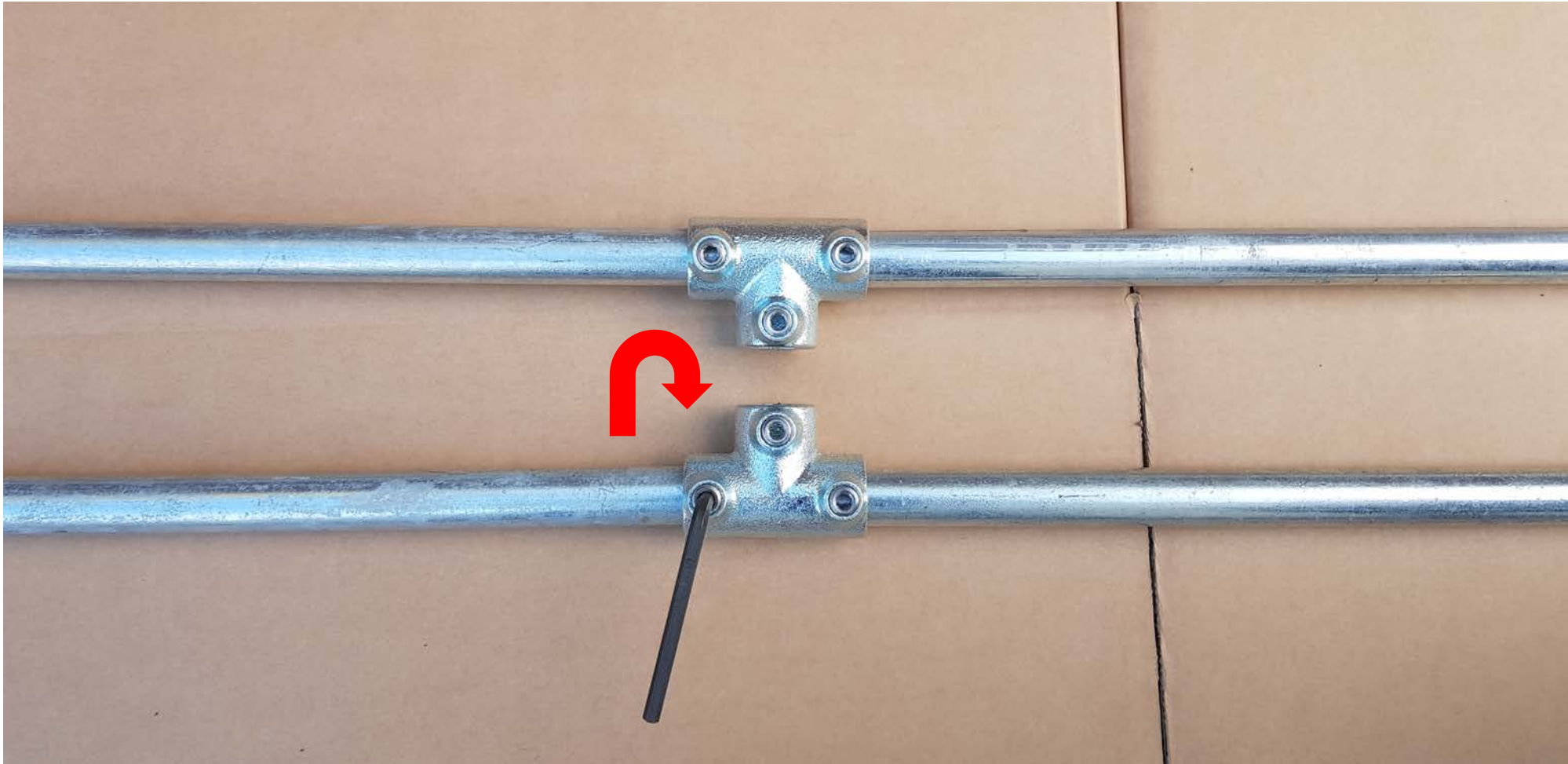
Disassemble your 'T' piece. Align "long bars" to meet in the center.



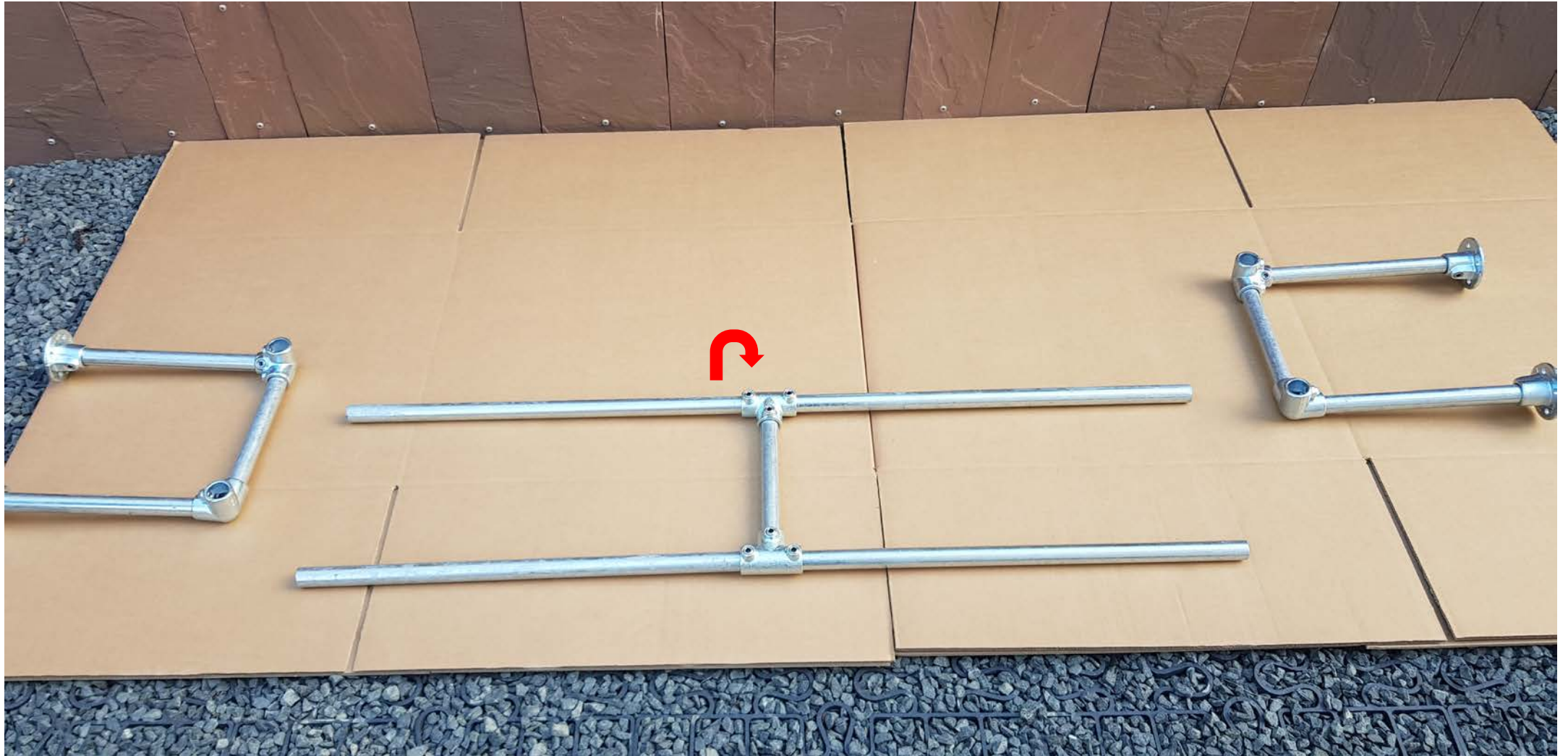
Tighten set-screws on one side.



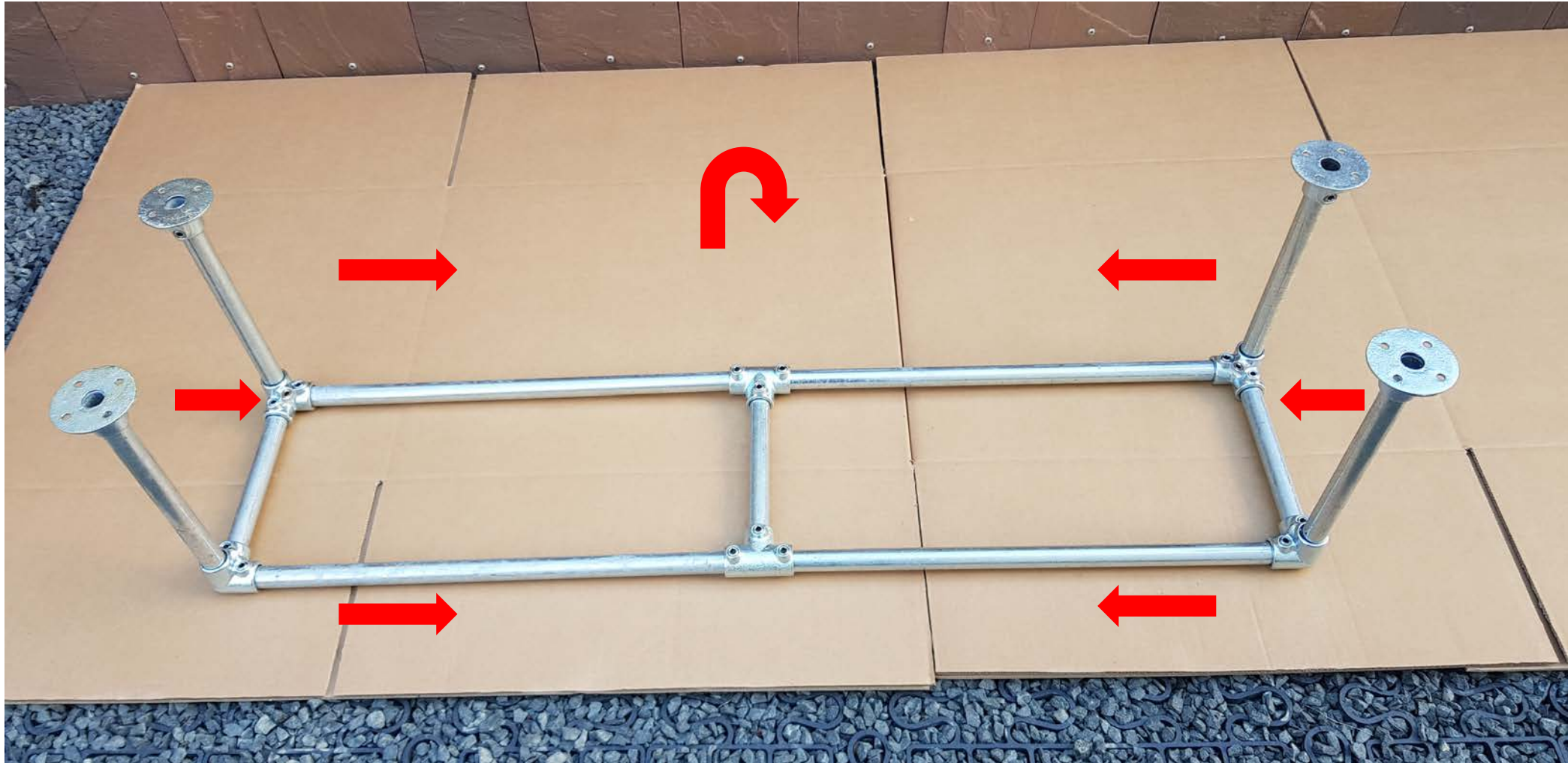
Tighten set-screws on the other side.



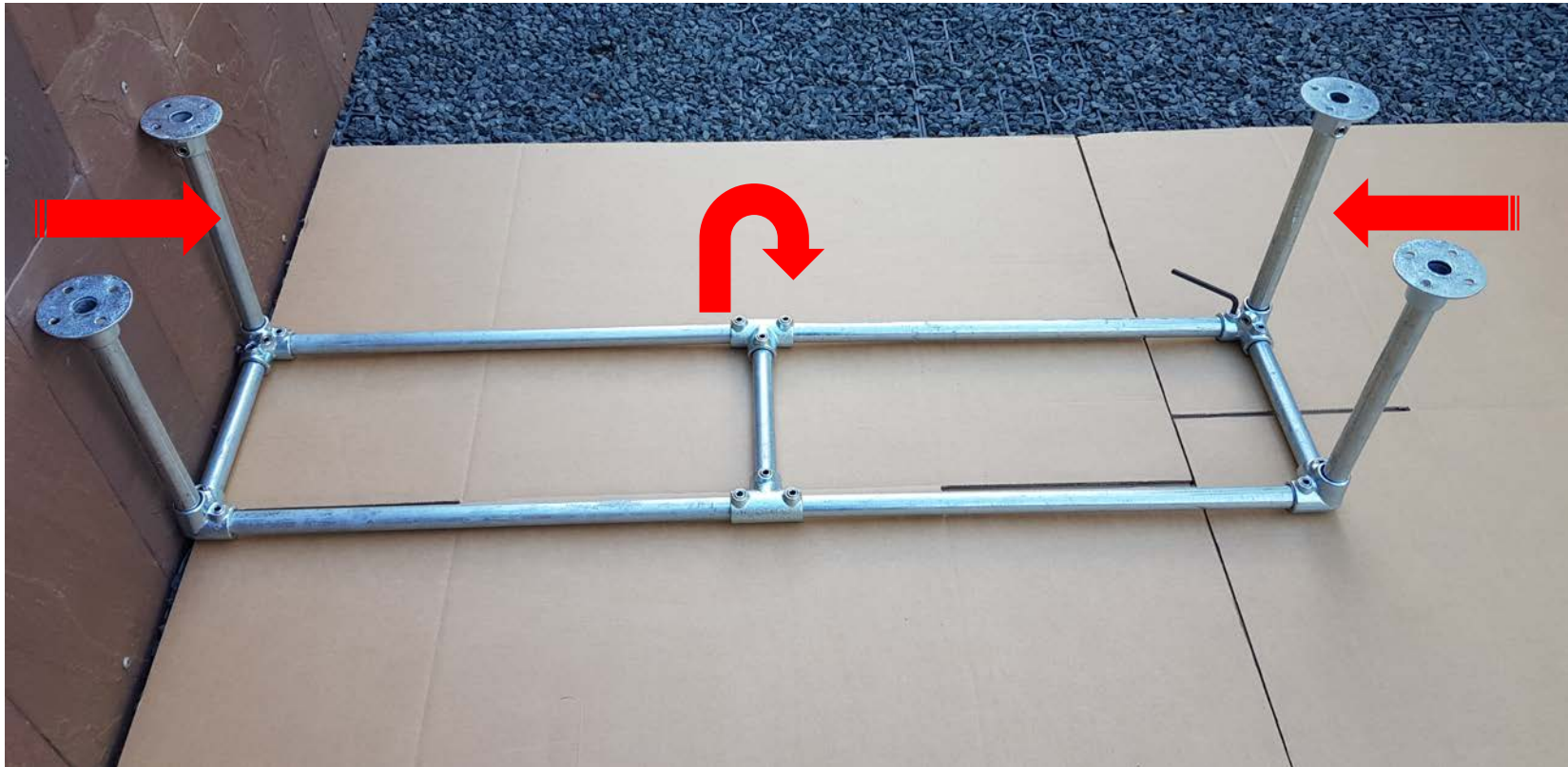
Join “cross member” and tighten set-screws.



Join leg pieces and push together hard.
Tighten all set-screws.



Lay the frame on its back and pull legs inward slightly, tighten all set-screws in the cross member.



Tighten your set-screws as firmly as possible as this ensures minimal sag in your bars. Pulling in the frame legs while you do so also helps.

Complete the frame.



Adjust your flood-plates.



Place your containers.



Manifold holes – END.

Fill membrane with loose aggregate (gravel).



Place membrane and geo-textile in containers.



STOP! Now backfill your containers with your growing media (learn to make this in the Owner's Area)

For ease of use, we've chosen to miss out this step in these assembly instructions.

Attach your manifold.



To do this, unscrew the brown caps, and remove the green inserts. Set these aside for a moment.

The tap connector can be orientated in either direction.

Attach irrigation.



The 'stopped' ends are at the rear of your planter, while the 'open' ends will attach to the manifold.

Dip ends in boiling water.



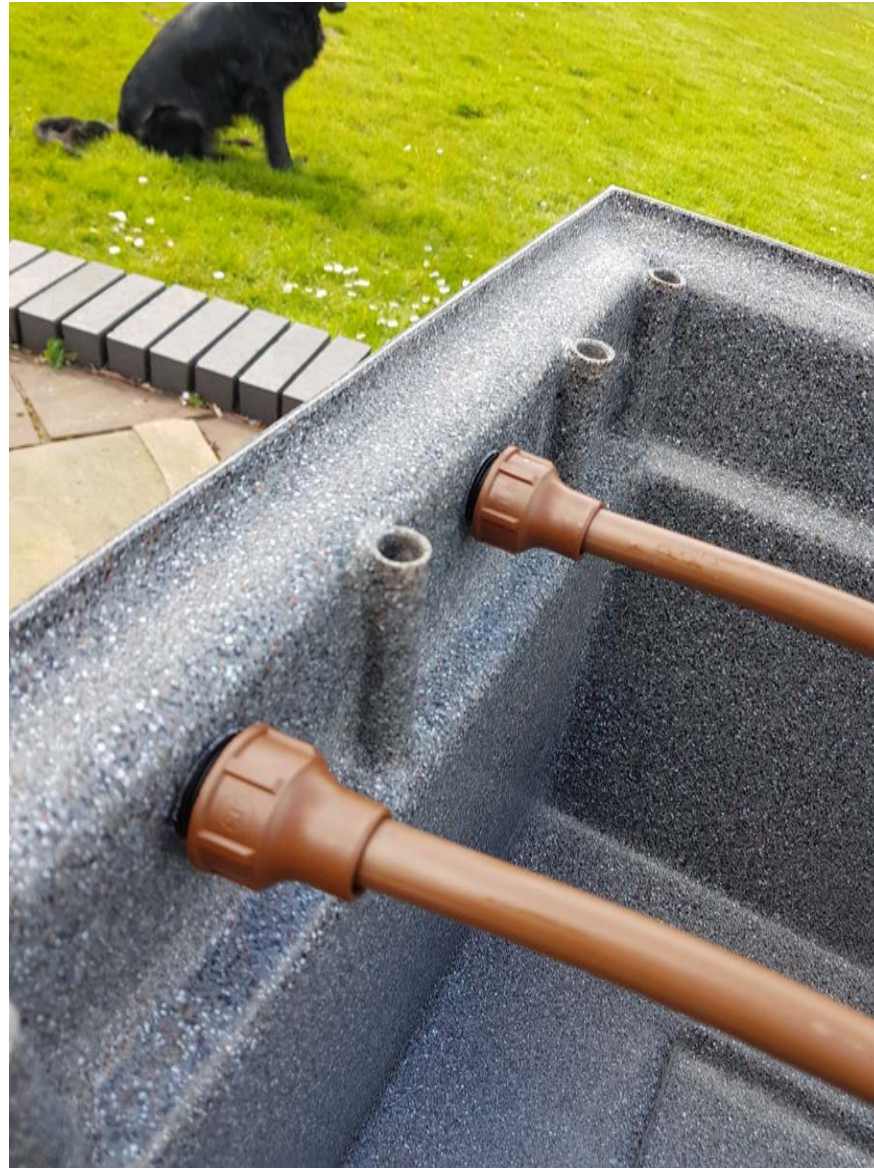
Attach brown fittings.



Attach green inserts.



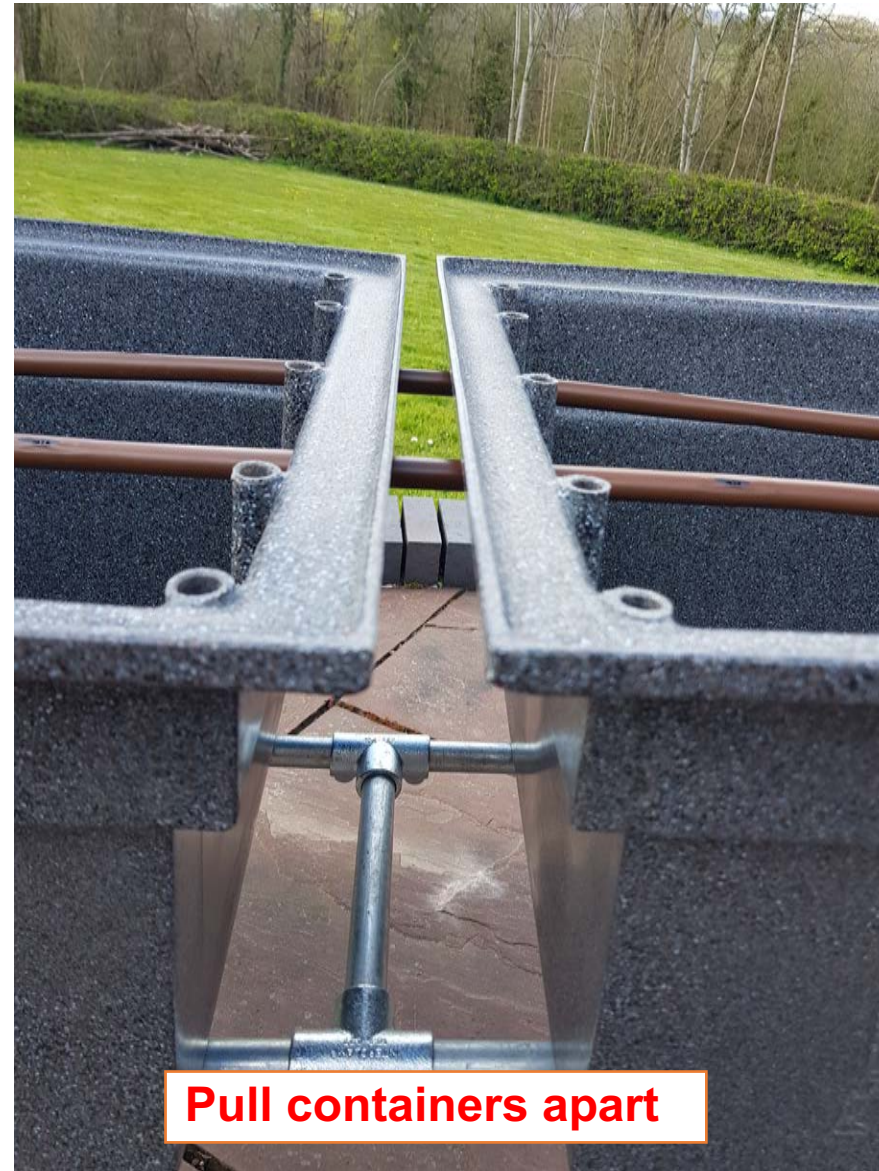
Screw fittings to manifold.



Push containers together.



Attach clips – straighten irrigation pipe.



Container placement.



Equal spacing from both ends.

Finished!



Congratulations! Your planter is ready for use!