

Suitable for
**NEWBORN
TO 4 YEARS**
(approximately)

Pria

Convertible car seat

Instruction Manual



**IMPORTANT: KEEP
THIS BOOKLET IN THE
PLACE PROVIDED ON
THE CHILD RESTRAINT**

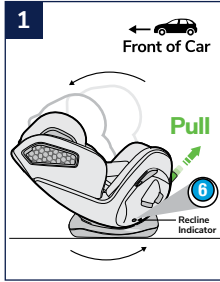


Scan QR code to view
video instructions

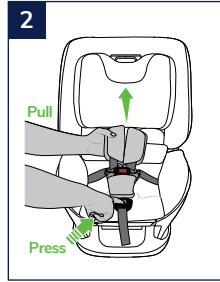


Rear Facing Mode

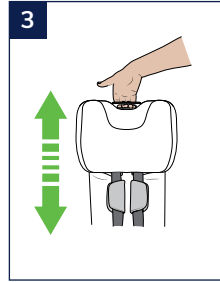
Quick Setup with ISOGO (if fitted)



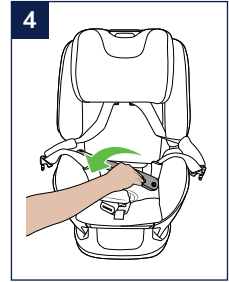
1 Recline seat for infant use



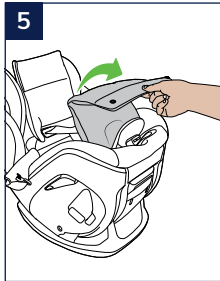
2 Loosen harness



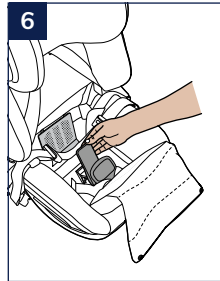
3 Raise headrest height



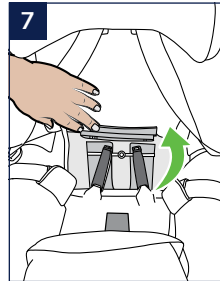
4 Unbutton seat trim



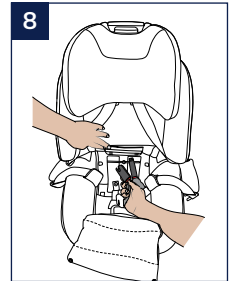
5 Open installation door



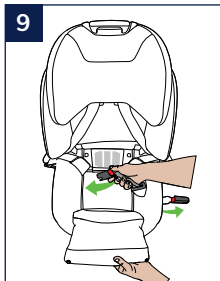
6 Lift SMART Lock® handle (use to hold door open)



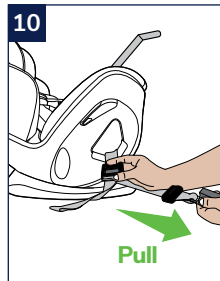
7 Open ISOGO storage compartment



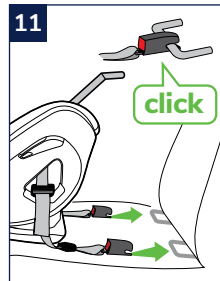
8 Unclip ISOGO connectors and close door



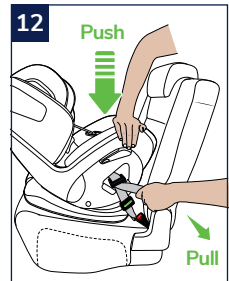
9 Thread connectors through belt path



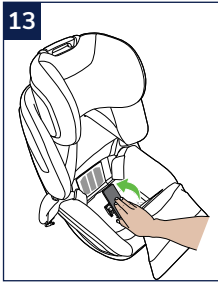
10 Fully lengthen ISOGO connector straps



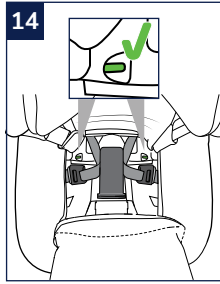
11 Attach ISOGO connectors



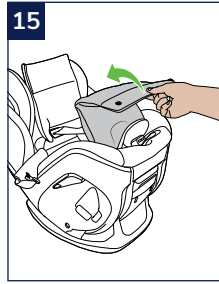
12 Remove slack



13 Close SMART Lock®



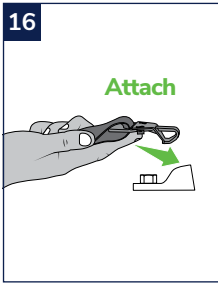
14 Ensure the tension indicators show green



15 Close installation door and restore seat fabric



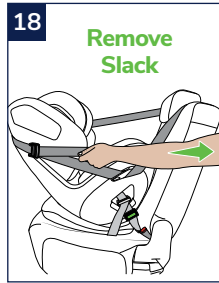
Scan QR code to view online video instructions



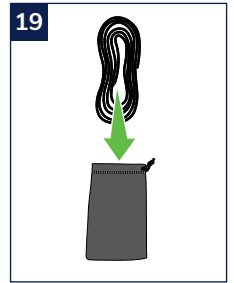
16 Attach the top tether strap



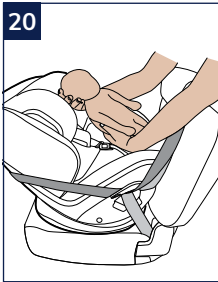
17 Engage tether through SMART Guide®



18 Remove slack from top tether



19 Store strap in storage pocket

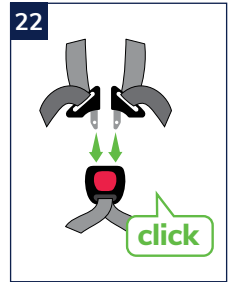


20 Place child in the restraint

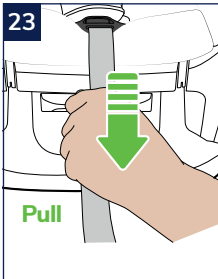


21 Harness straps in green zone

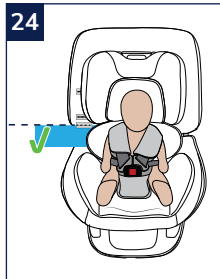
The shoulder straps must be in the slots which are nearest the child's shoulders, but not lower than the child's shoulders.



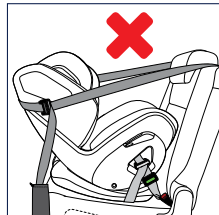
22 Engage harness buckle



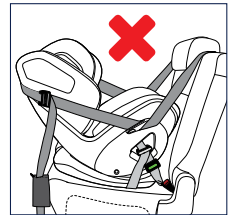
23 Tighten the harness



24 Double check shoulder height markers



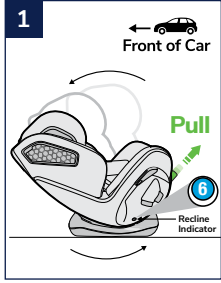
Do not engage conventional tether position on both sides of restraint



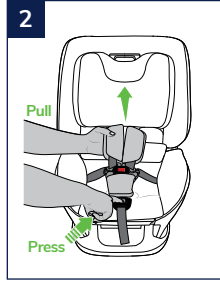
Do not engage tether in Smart guide on both side of the restraint

Rear Facing Mode

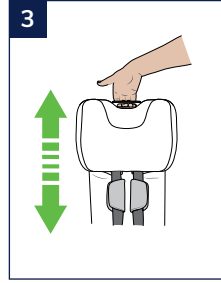
Quick Setup with Seatbelt



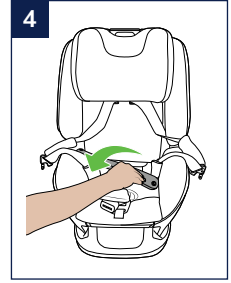
1 Recline seat for infant use



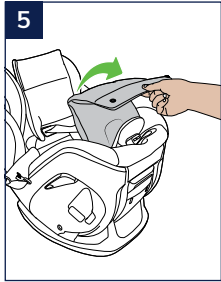
2 Loosen harness



3 Raise headrest height



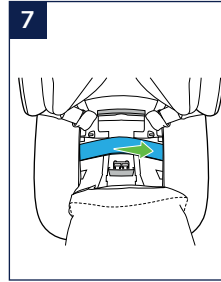
4 Unbutton seat trim



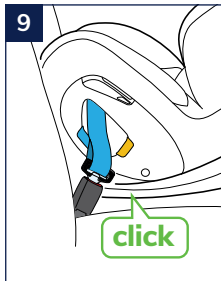
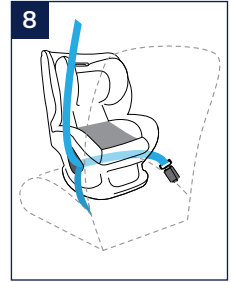
5 Open installation door



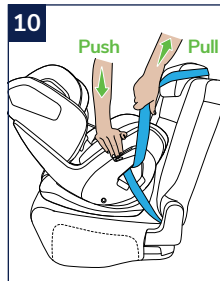
6 Lift SMART Lock® handle (use to hold door open)



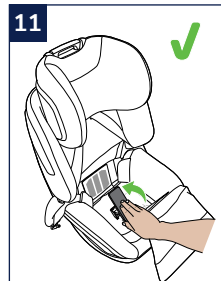
7 Thread seatbelt through belt path



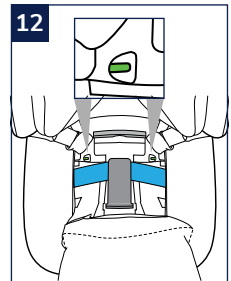
9 Fasten the seatbelt buckle



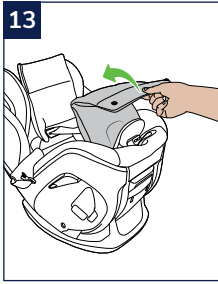
10 Remove slack



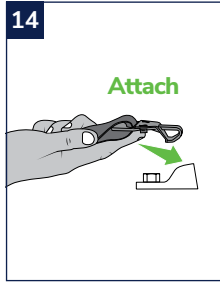
11 Close SMART Lock®



12 Ensure the tension indicators show green on both sides



13 Close installation door and restore seat fabric



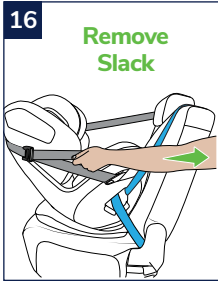
14 Attach the top tether strap



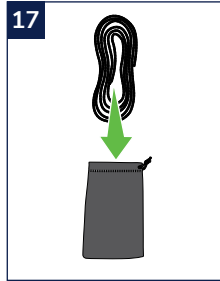
15 Engage tether through SMART Guide®



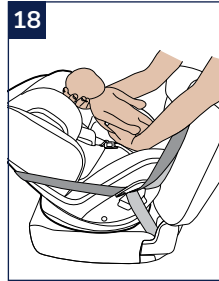
Scan QR code to view online video instructions



16 Remove slack from top tether



17 Store strap in storage pocket

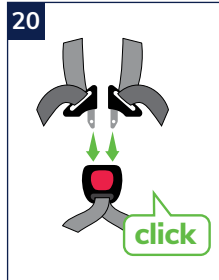


18 Place child in the restraint

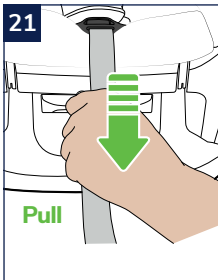


19 Harness straps in green zone

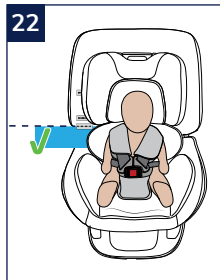
The shoulder straps must be in the slots which are nearest the child's shoulders, but not lower than the child's shoulders.



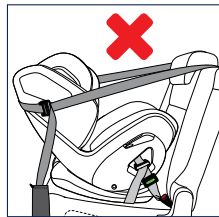
20 Engage harness buckle



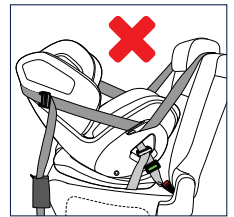
21 Tighten the harness



22 Double check shoulder height markers



Do not engage conventional tether position on both sides of restraint



Do not engage tether in Smart guide on both side of the restraint

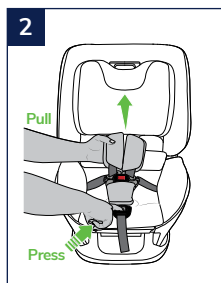
Forward Facing Mode

Quick Setup with ISOGO (if fitted)

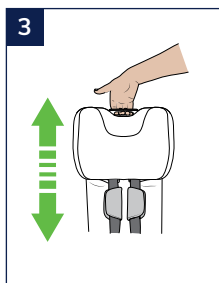
Remove padded inserts before installing in forward facing mode



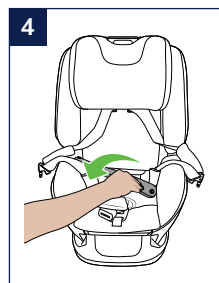
Convert seat to forward facing mode



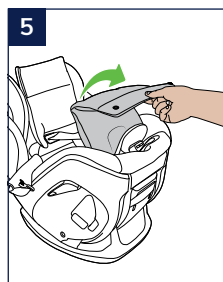
Loosen harness



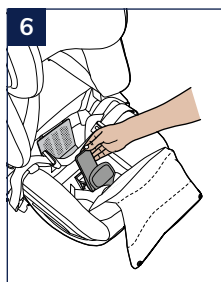
Raise headrest height



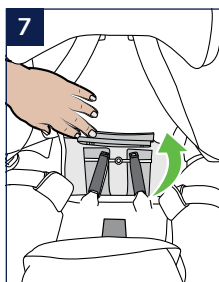
Unbutton seat trim



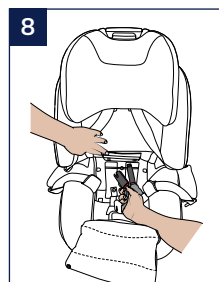
Open installation door



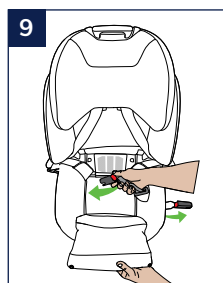
Lift SMART Lock® handle (use to hold door open)



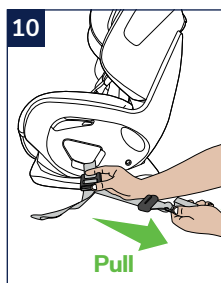
Open ISOGO storage compartment



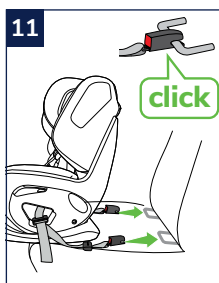
Unclip ISOGO connectors



Thread connectors through belt path



Fully lengthen ISOGO connector straps

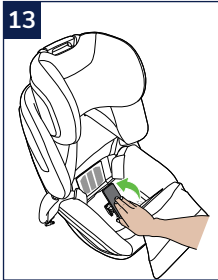


Attach ISOGO connectors

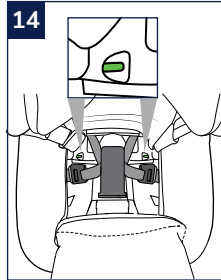


Remove slack. Ensure both indicators are green

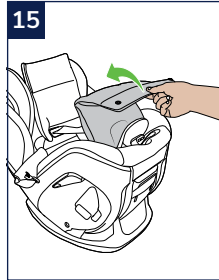
Scan QR code to
view online video
instructions



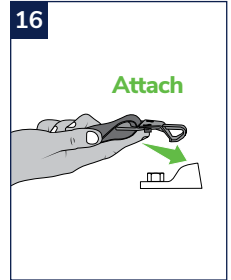
Close SMART Lock®



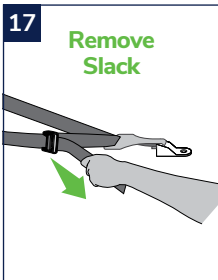
Ensure the tension indicators show green on both sides



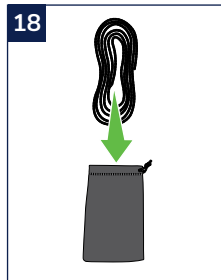
Close installation door and restore seat fabric



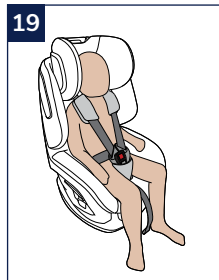
Attach the top tether strap



Remove slack from top tether



Store strap in storage pocket

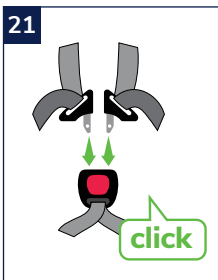


Place child in the restraint

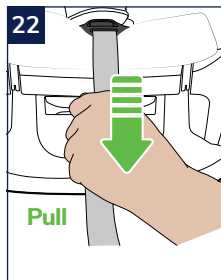


Harness straps in green zone

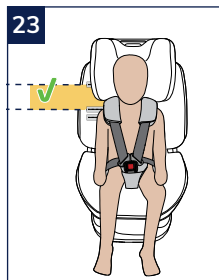
The shoulder straps must be in the slots which are nearest to the child's shoulders but not more than 25mm below the child's shoulders



Engage harness buckle



Tighten the harness



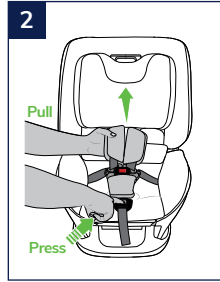
Double check shoulder height markers

Forward Facing Mode

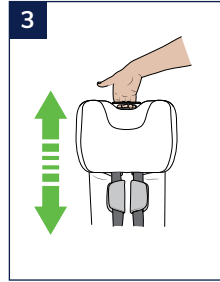
Quick Setup with Seatbelt



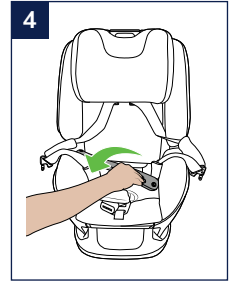
Convert seat to forward facing mode



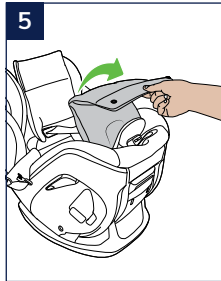
Loosen harness



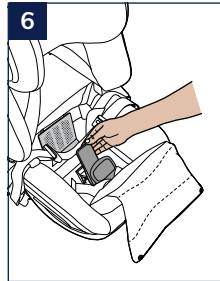
Raise headrest height



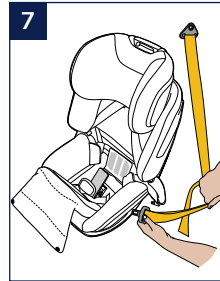
Unbutton seat trim



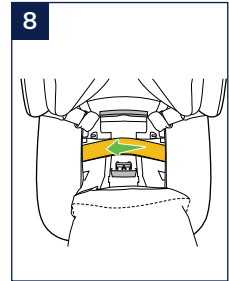
Open installation door



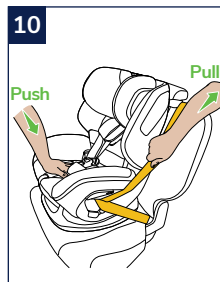
Lift SMART Lock® handle



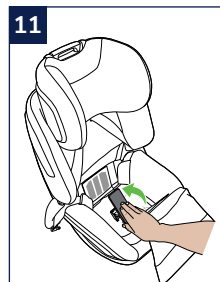
Thread seatbelt through belt path



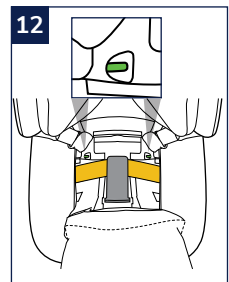
Fasten the seatbelt buckle. Re-adjust SMART Lock® as necessary



Remove slack

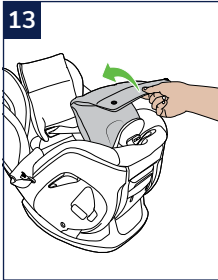


Close SMART Lock®

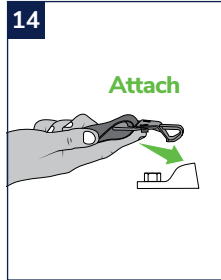


Ensure the tension indicators show green on both sides

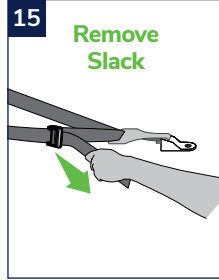
Scan QR code to
view online video
instructions



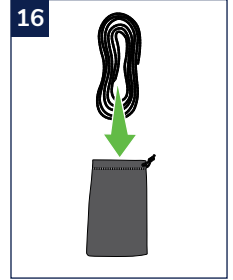
13 Close installation door and restore seat fabric



14 Attach the top tether strap



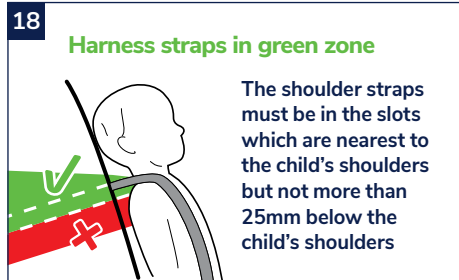
15 Remove Slack



16 Store strap in storage pocket

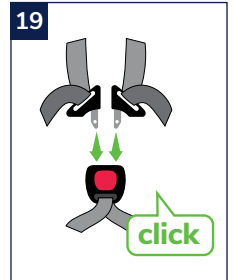


17 Place child in the restraint

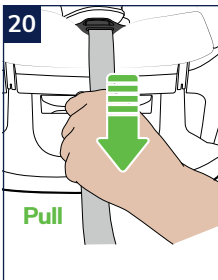


Harness straps in green zone

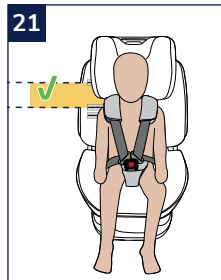
The shoulder straps must be in the slots which are nearest to the child's shoulders but not more than 25mm below the child's shoulders



19 Engage harness buckle



20 Tighten the harness



21 Double check shoulder height markers

Welcome to the Maxi-Cosi family!

Congratulations on the purchase of your brand new Maxi-Cosi Car Seat. Please take the time to read through these instructions carefully.

Our vision at Maxi-Cosi is to help parents as their families grow, and like an embrace that carries a child before they can walk, we've helped millions of families at the start of their new life.

It was over 40 years ago that we launched Europe's first baby car seat and since then, we've carried over 60 million babies home from the hospital! We were pioneers then, and we're pioneers now. We will never stop improving, designing, and perfecting the way new families move around the world - wherever life's adventures may take them.



Air Protect® Superior Side Impact Protection

Air Protect® is designed to reduce the severity of side impact crash forces by absorbing the energy and transferring that energy away from your child's head giving your child 180 degree protection in the instance of an accident



SMART Guide®

Our patent-pending SMART Guide® changes car seats forever, providing parents with simple, fuss-free entry and exit of their child, rather than stretching and lifting over traditional tethers or installing and removing the tether every time you enter and exit the car.



ISOGO®

ISOGO® is an ISOFIX compatible system for installing Maxi-Cosi car restraints for children. The ISOGO system is a simple and user-friendly latch system. It enables parents and care givers to safely connect their Maxi-Cosi child restraint to their vehicle's ISOFIX lower anchorages.



Accident Exchange

As a safety brand, we want to offer the best possible support during this time. In the event of a car accident your car seat may have unseen damage. The Maxi-Cosi Accident Exchange Service* offers new for old replacement of your car seat, giving you peace of mind. One less thing to worry about as a new parent.

Contents

Warnings _____	12
Shoulder Height Markers _____	14
Padding and Inserts _____	16

Rear Facing Mode

Information _____	17
Components _____	18
Preparation before Install _____	20
Install using ISOGO _____	22
Install using Seatbelt _____	28
How to use _____	33

Forward Facing Mode

Information _____	37
Components _____	38
Preparation before Install _____	40
Install using ISOGO _____	42
Install using Seatbelt _____	48
How to use _____	52

Additional Information _____	55
Seat Guide _____	56
Care and Maintenance _____	57
Anchorage Fittings _____	63
Accessories _____	65
Guarantee _____	67



WARNINGS

Read and follow all of the installation instructions for maximum protection. If you have any questions regarding the installation or use of this child restraint in Australia or New Zealand, please contact our customer service numbers provided. An alternative option is to also contact any registered child fitting station authorised by your local transport authority.

IMPORTANT: Do not attach the lower attachment connector of two separate child restraints to the same ISOFIX low anchorages in your car. Always attach top tether strap to the child restraint upper anchorage in your car.

- To be used only in a rearward-facing position until the infant's shoulders either reach the lower shoulder height marker (approximately 12 months of age) or reach the middle height marker (approximately 2 to 3 years of age). Then to be used in a Forward Facing position until the child's shoulders reach the upper shoulder height marker (approximately 4 years of age).
- Continue to use this child restraint until the child reaches this limit.
- Do not use forward facing until child's shoulders are above the lower shoulder height marker.
- Infants are at risk of serious injury if they face forward too early.
- Children are at risk of serious injury if they move to booster seats too early.
- Children who have outgrown this restraint are safest in a larger child restraint with an in-built harness or a booster seat until their shoulders reach the upper shoulder height marker of the restraint.

General

- Use the restraint exactly as shown in the instructions.
- Supervision of children is needed because they may be able to undo the buckles.

DO NOT LEAVE CHILDREN UNATTENDED IN THE CAR.

- Do not alter or modify this restraint.
- Repairs must only be done by the manufacturers or agent.
- Do not allow the restraint to come into contact with polishes, oils, bleach and other chemicals.
- Destroy the restraint if it has been in a severe crash, even if no damage is visible.

DO NOT USE THIS RESTRAINT WITHOUT THE COVER.

- To ensure infant's back is evenly supported, do not put more than one nappy on the baby and make sure the nappy is not thickly folded at the back.

DO NOT USE A REAR-FACING CHILD RESTRAINT WHERE AN AIRBAG IS FITTED IN FRONT OF THE SEATING POSITION.

- Fit the restraint firmly to the car seat.
- Fit the harness firmly to the child.
- A loose restraint or harness is dangerous.
- Do not harness an infant wrapped in a blanket or swaddled. Any blanket or wrap must only be placed over the harness and infant. Ensure that the infant's legs are not bound or wrapped together and the arms are not bound or wrapped together.
- Seatbelt extenders are not recommended to be used if the seatbelt is not long enough to secure the child restraint. If seatbelts are too short then advice should be sought from a child restraint fitter and their recommendation be considered before using a seatbelt extender.
- Always secure the loose end of the top

WARNINGS

tether strap. Do not use the child restraint where this strap may fall into a split in the seat back or off the side of the seat.

- Always secure the loose end of the top tether strap to prevent it hanging out of the car or being accessible by the child.

ALWAYS ATTACH HOOK AND REMOVE SLACK.

THIS RESTRAINT IS NOT SUITABLE FOR USE WHERE THE TOP TETHER STRAP MAY FALL INTO A SPLIT IN THE SEAT BACK OR OFF THE SIDE OF THE SEAT.

THIS RESTRAINT MUST BE ATTACHED TO A CHILD RESTRAINT UPPER ANCHORAGE POINT IN THE CAR. REFER TO CAR OWNER'S HANDBOOK FOR LOCATION OF UPPER ANCHORAGE POINTS. REFER TO A CHILD RESTRAINT FITTING STATION IF NO UPPER ANCHORAGE POINTS ARE IN THE MOTOR CAR.

- Always check the measurements between the front of the seat back of the rear seat and all front seats in the car in which the child restraint is intended to be used, to ensure that the space is sufficient.
- Care and attention be given to ventilation and shading of the occupant.

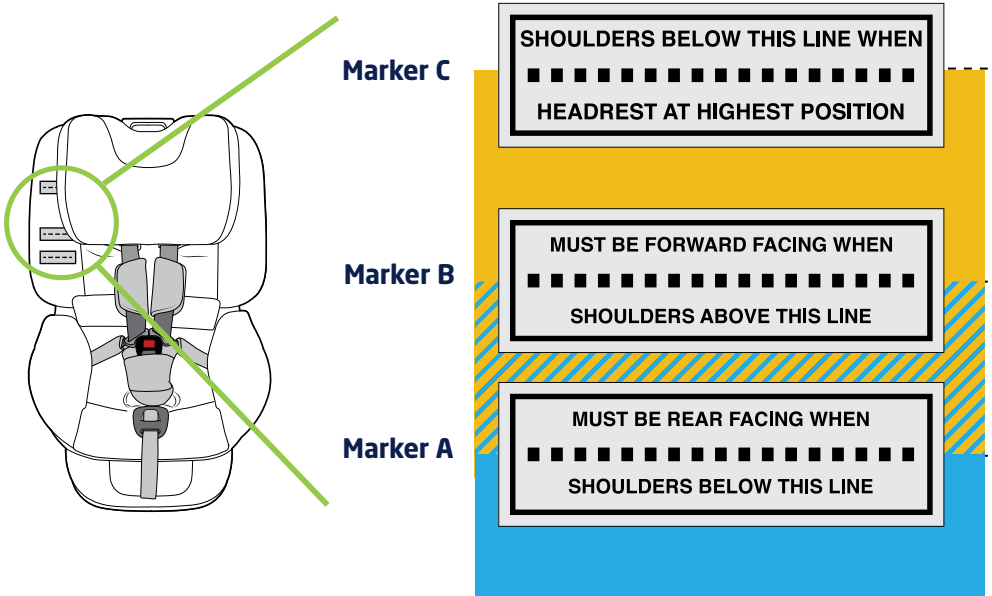
ISOGO MODEL - RMT-A-13-A4B-AGL: TO BE USED WITH A LAP-SASH/LAP-ONLY SEATBELT OR ISOFIX LOW ANCHORAGES IN THE FRONT/BACK OF MOST CARS

WITH FORWARD FACING SEATS.

SEAT BELT MODEL - RMT-B-13-A4B-A, RMT-C-13-A4B-AG: TO BE USED WITH A LAP-SASH/LAP-ONLY SEATBELT IN THE FRONT/BACK OF MOST CARS WITH FORWARD FACING SEATS.

- The use of child restraints in the front seat may be restricted for children of specific ages by local legislation. Please check with your local legislation regarding any restriction for child restraint. If a car has two or more rows of seats, children under four must not travel in the front seat. If all seats, other than the front seats, are being used by children under seven years, children aged between four and six years (inclusive) may travel in the front seat, provided they use an approved child restraint or booster seat.
 - Use of aftermarket accessories (i.e. items not provided in the box with the child restraint), can reduce the safety provided by child restraint and may cause injury or death. For approved aftermarket accessories please refer to [page 65] and ensure they are compliant with AS/NZS 8005
 - Please contact Dorel Australia Customer Service with any questions or concerns.
- 当婴儿的肩膀达到最下的肩高标记前(大约12个月的婴儿), 必须反向安装安全座椅; 当儿童的肩膀达到中部的肩高标记前(大约2到3岁的儿童), 建议反向安装安全座椅; 然后用于正向安装, 直到儿童的肩膀达到最上的肩高标记(大约4岁的儿童)

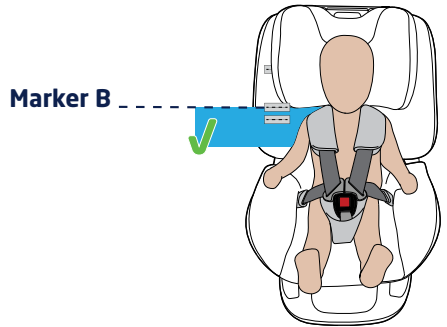
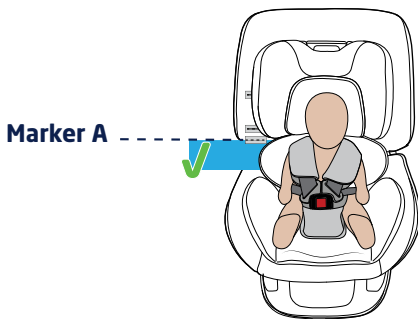
Shoulder Height Markers



Rear Facing

Newborn to 30 months (approx)

The shoulder straps must be in the slots which are nearest the child's shoulders, but not lower than the child's shoulders.



Infant

Child to sit in rear facing position while shoulders sit below the Lower Height Marker A.



Small child

Child to remain rear facing while shoulders are below Marker B, or can change to forward facing if child is uncomfortable.

Forward Facing Zone
Between Markers B and C



When shoulders are below this line (with headrest set to highest position) install seat in forward facing mode.

For toddler use up to approx 4 years old or when the child's shoulders reach the shoulder height marker at which point you must move to the next car seat.

Mid Zone
Between Markers A and B



OR



When shoulders are between markers A and B, keep seat in rear facing position, or change to forward facing mode if child is uncomfortable.

Maxi-Cosi recommends for toddler use up to approx 30 months old or when the child's shoulders reach the shoulder height marker at which point you must turn the seat Forward Facing.

Rearward Facing Zone
Below Marker A



When shoulders are below this line, seat must be positioned in rear facing mode.

For newborn use up to approx 12 months old or when the child's shoulders reach the shoulder height marker at which point you can continue to use rearward-facing until the middle height marker, or turn the car seat Forward Facing.

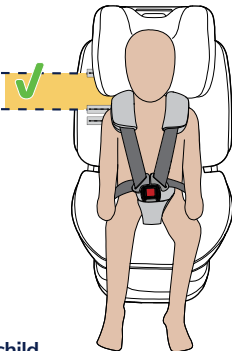
Forward Facing

12 months to 4 years (approx)

The shoulder straps must be in the slots which are nearest to the child's shoulders but not more than 25mm below the child's shoulders.

Marker C

Marker B



NOTE: any check to height markers before turning to forward facing must be done without any padded inserts.



12 MONTHS
- 4 YEARS*

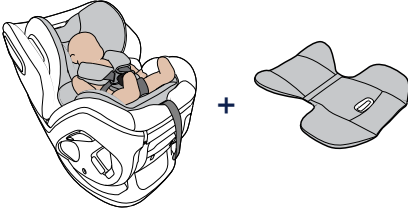
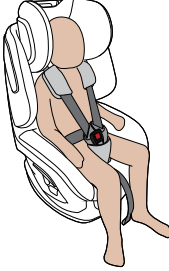
Older child

Convert to forward facing mode when child's shoulders sit above shoulder height marker B.

*Approximately

Padding and Inserts

Combination guide

Mode	Padding / Inserts ¹	Setup Instructions	Age Suitability ²
Rear Facing		See page 21	Newborn to 30 months (approximate)
Forward Facing	 Remove Inserts for Forward Facing mode	See page 41	12 months to 4 years (approximate)

1. Padding / Inserts

Your newborn insert may be used until your child is approximately 6 months of age or 8kgs, when by they must be removed. You must not use newborn inserts when your child restraints in the forward facing position.

2. Age Suitability

All ages are approximate; it is recommended that you follow the height markers on the seat when looking to change your child from rearward facing to forward facing or checking when your child has outgrown their seat.



Rear Facing Mode Instructions

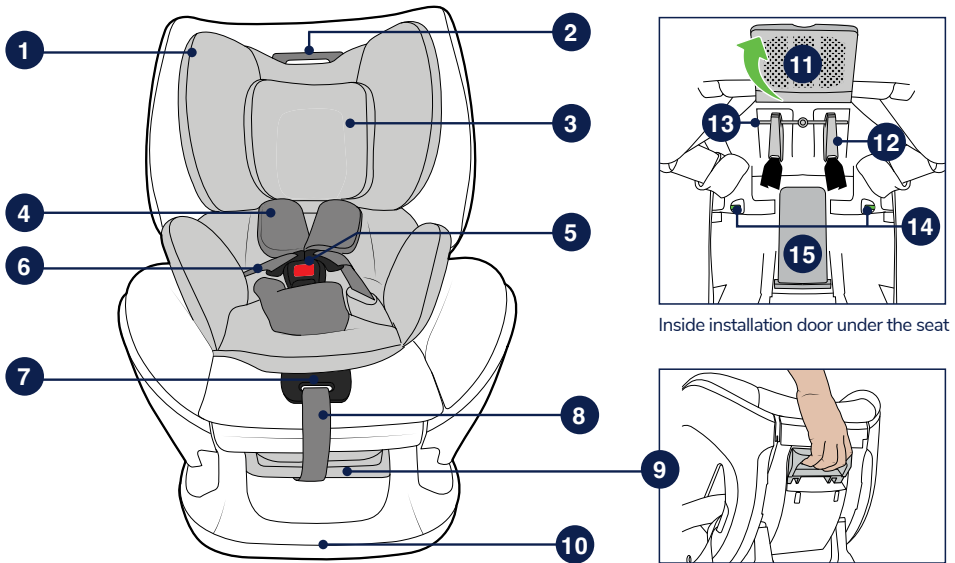
Your Pria seat is suitable from newborn until approximately 4 years of age and provides your child with opportunity to extended rearward facing (ERF) for up to 30 months or as long as they reach the required rearward facing height markers.

You will have the choice to install your child restraint via ISOGO (if fitted) or seatbelt installation into your vehicle.

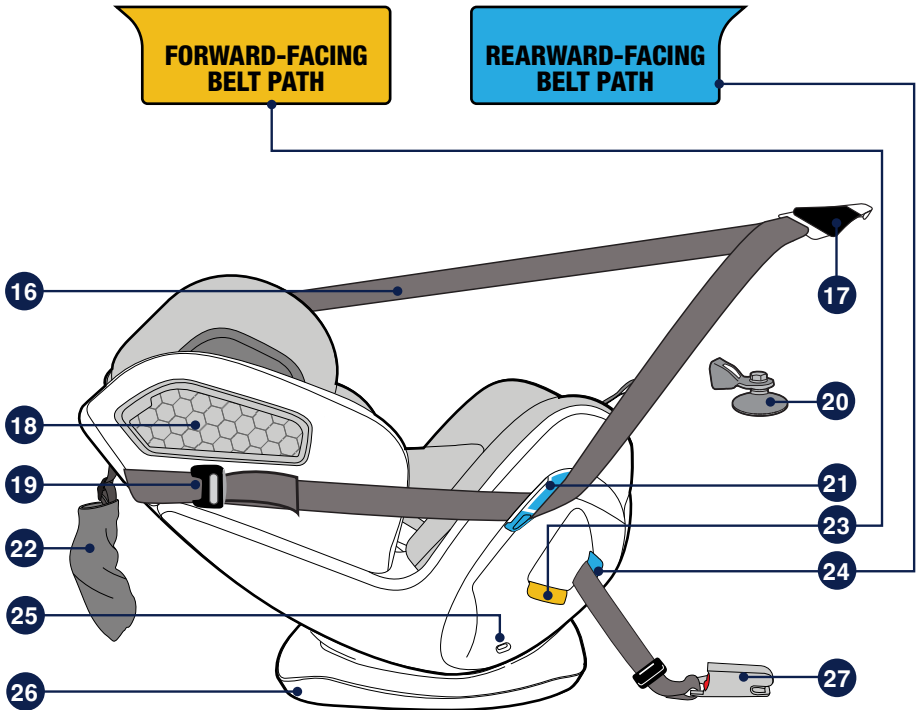
Here's a quick checklist before you install your child restraint in rear facing mode:

- Check that your child's upper shoulders are NOT above the middle height marker and if they are, convert to forward facing.
- Harness height is level or above shoulder height but not below.
- Rearward facing recline setting 6 is selected.
- Child is younger than 6 months (or 8kgs) for the use of newborn inserts.

Components



-
- | | |
|---|---------------------------------------|
| 1. AirProtect® Cell (x2) | 8. Harness Tightening Strap |
| 2. Headrest Adjuster Handle | 9. Seat Recline Lever |
| 3. Infant Headrest Insert (if fitted) | 10. Base |
| 4. Harness Pads | 11. ISOGO Storage Compartment Door |
| 5. Buckle | 12. ISOGO Connectors (x2 - if fitted) |
| 6. Six-Point Harness | 13. ISOGO Storage Rod |
| 7. Harness Release Button (under cover) | 14. Belt Tension Indicators (x2) |
| | 15. SMART Lock® |



- | | |
|--|---|
| 16. Top Tether Strap | 22. Storage Pocket |
| 17. Top Tether Hook | 23. Forward-Facing Belt Path Indicator |
| 18. G-Cell (if fitted) (x2 - if fitted) | 24. Rearward-Facing Belt Path indicator |
| 19. Top Tether Strap Adjuster | 25. Recline Indicator |
| 20. Anchor Kit
(comes attached to top tether) | 26. Base |
| 21. SMART Guide® | 27. ISOGO Connectors (x2 - if fitted) |

Rear Facing Mode

Preparation before install

Convert seat to rear facing mode

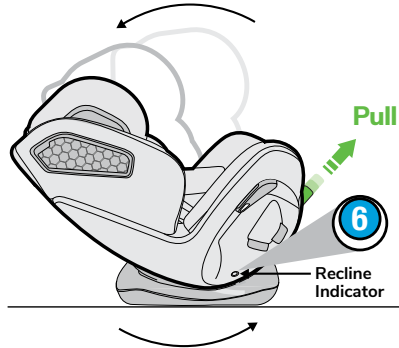
Recline adjustment.

As shown on the Recline Indicator Label, this seat is fitted with six recline positions. The sixth (6) position is the most reclined setting and is for rear facing mode only.

Step 1. Place hand under seat and squeeze the grey recline handle.

Step 2. Whilst squeezing, tilt the seat back gently to recline.

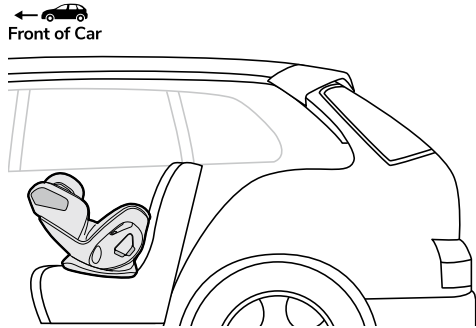
Step 3. Release the handle when position six (6) is reached.



Place child restraint in vehicle

Place restraint in rearward facing position in vehicle.

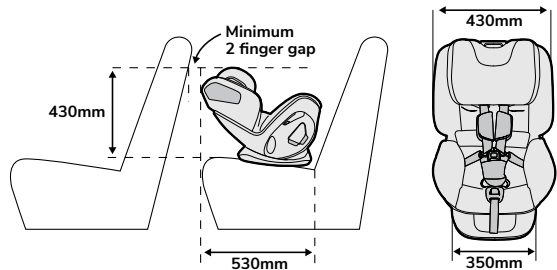
Place restraint facing rearwards on back seat of vehicle in line with a top tether strap anchorage point.



Ensure there is enough room in vehicle

To ensure there is enough room in the vehicle, check the measurements between the vehicle's rear and front seats where the seat is to be installed.

NOTE: It is permissible for the front vehicle seat to touch the child restraint, however, the front seat should not alter the installed angle of the child restraint.



Ensure your vehicle has an upper anchorage fitting

Figure 1 shows possible locations where you might find the upper anchor point in your vehicle. The upper anchor point may be found in different locations in different vehicles, refer to your vehicle owner's manual for more information if required.

See page 63-64 for more information on upper anchorage point fittings.

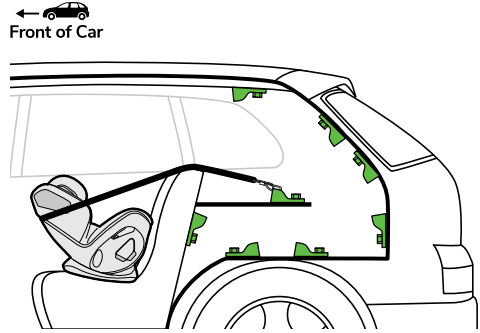
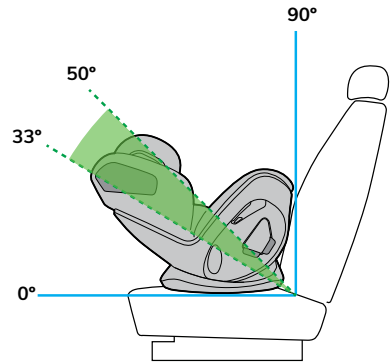


Figure 1

Ensure correct seat angle

All vehicle seats are different which may position the child restraint too upright or reclined for the child's comfort. This diagram indicates the recommended installation angle range of child restraints specific to this manual. The child restraint's backrest angle should not exceed 50° or fall below 33° (measured from the horizontal plane) when installed.

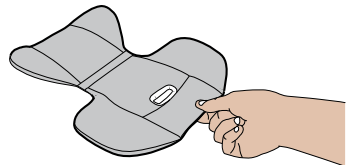


Infant insert combination

Use the padded inserts for infants until their shoulders reach the lower shoulder height marker or until the inserts cause the child to be uncomfortable.

When to remove the inserts:

Padded inserts are to be removed when the child reaches 6 months of age or when they weigh 8kg or more.



IMPORTANT:

The padded inserts **MUST** be removed for Forward Facing mode.

Rear Facing Mode

Install using ISOGO (if fitted)

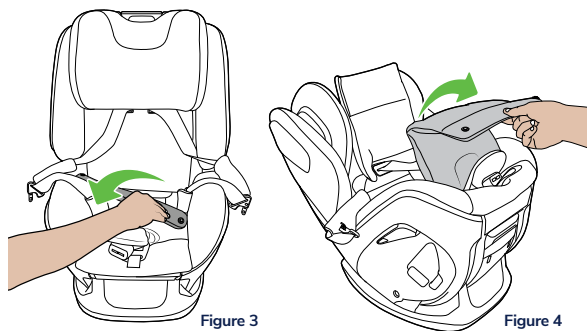
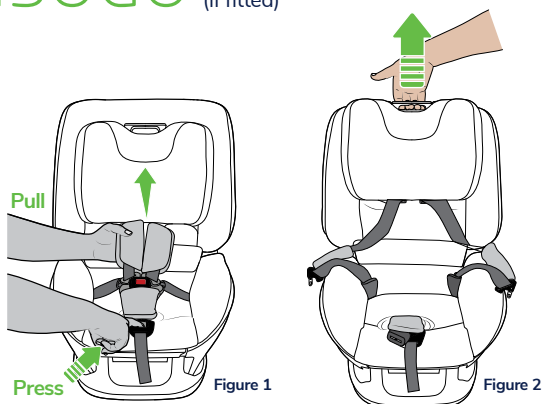
Open installation door

Step 1. Loosen and un-buckle harness and remove newborn insert (Figure 1).

Step 2. Raise the height of the seat headrest (Figure 2).

Step 3. Unbutton the seat trim on the backrest (Figure 3).

Step 4. Continue to fold the fabric down and lift up to open the installation door (Figure 4).



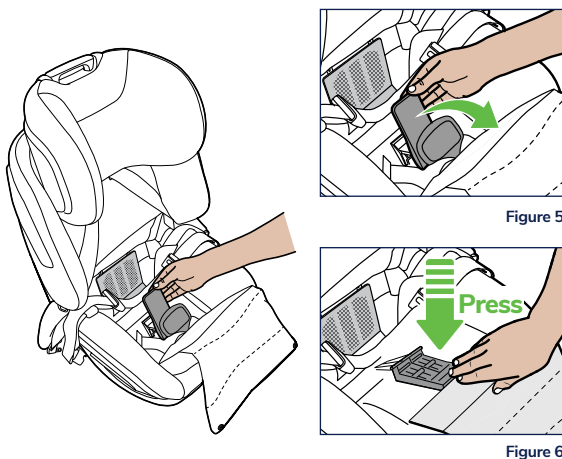
Lock installation door in open position

The installation door can be locked in open position to allow easy access to the installation path.

Step 1. Lift the SMART Lock® handle up (Figure 5).

Step 2. Continue to pull the SMART Lock® handle until it reaches the underside of the open installation door (Figure 5).

Step 3. Press SMART Lock® against installation door until it catches and holds the door open (Figure 6).



Unclip the ISOGO connectors

Step 1. Open ISOGO storage compartment door on the backrest portion of the seat to reveal the ISOGO connectors (Figure 7).

Step 2. Unclip the ISOGO connectors from the storage rod by pushing the buckle button (Figure 8).

Step 3. Remove the straps from the storage location.

Step 4. Close the access door (Figure 9).

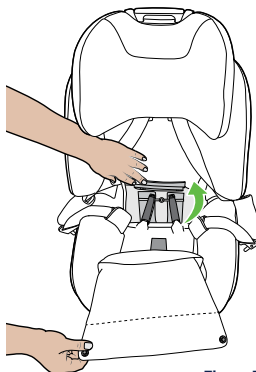


Figure 7

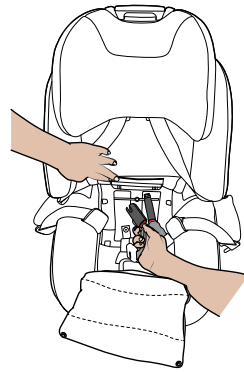


Figure 8

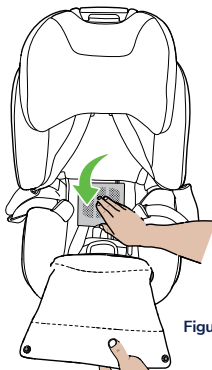


Figure 9

Thread the ISOGO connectors through the belt path

Step 1. Thread the ISOGO connectors through each belt path opening so the belt sits in the installation path (Figure 10 & 11).

Step 2. Centre the ISOGO straps so that they sit evenly on either side of the SMART Lock®, and the two ISOGO connectors are positioned evenly on either side of the seat (Figure 11).

This will make it easier to keep the restraint centered when installing into vehicle.

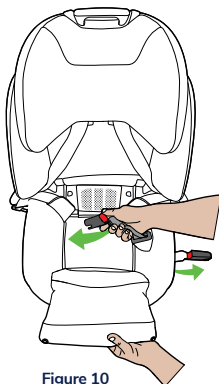


Figure 10

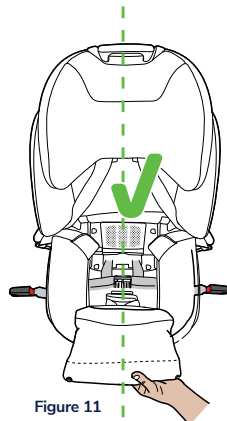
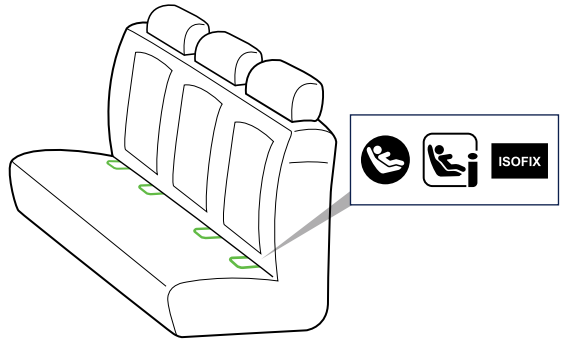


Figure 11

Rear Facing Mode Install using ISOGO (if fitted)

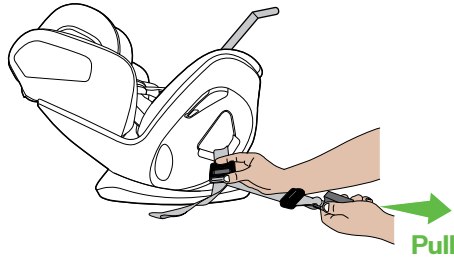
Locate the ISOFIX lower anchorage points

Locate the low anchorage points. You can find these by looking for the ISOFIX logo located on the vehicle seat. Refer to your vehicle owner's manual for more information if required.



Fully lengthen ISOGO connector straps

Press and hold the ISOGO adjuster release button and pull the connector strap to fully lengthen. Repeat for the other connector.



Attach ISOGO connectors

Step 1. Attach the lower connectors on both sides. Listen for a 'click!' (Figure 12).

Step 2. Pull to check connection (Figure 13).

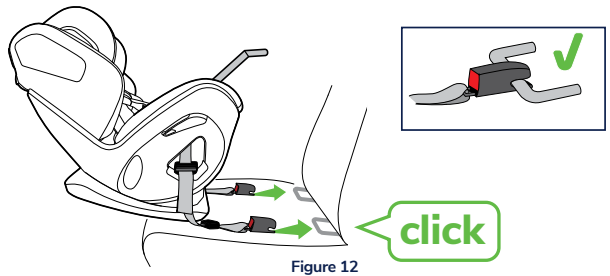


Figure 12

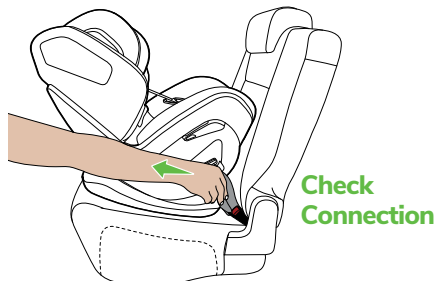


Figure 13

Tighten ISOGO straps

Press the restraint down firmly into the vehicle seat and pull on the ISOGO straps (Figure 14) until the ISOGO strap tension indicators show full GREEN.

Ensure the two strap adjusters are evenly spaced either side of the seat and not hanging out of the seat belt route opening.

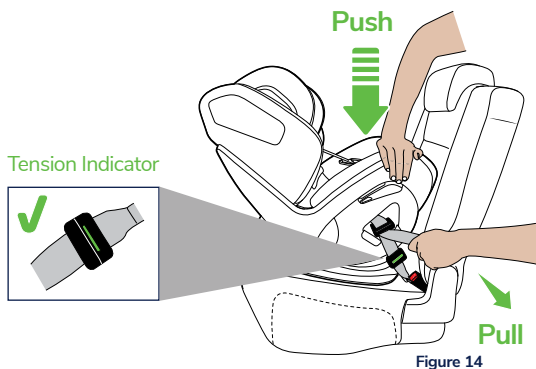


Figure 14

Close SMART Lock®

Step 1. Press the SMART Lock® down firmly to tighten and lock the ISOGO strap in place (Figure 15).

Step 2. Ensure both tension indicators show green after locking the SMART Lock® (Figure 16).

NOTE: Indicators will stay black if installed incorrectly.

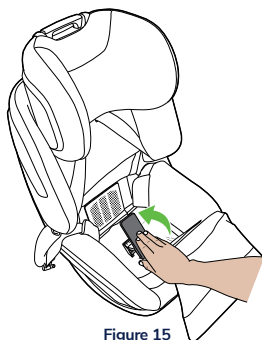


Figure 15

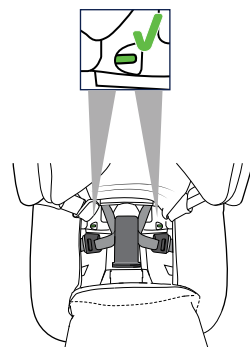
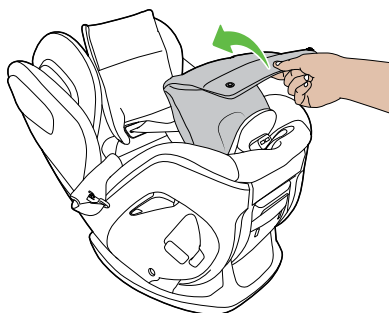


Figure 16

Close installation door and restore seat fabric

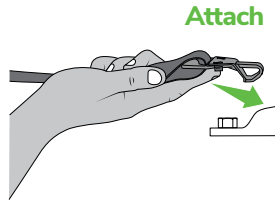
Close installation door, button seat trim and re-install infant padding / inserts (if in use).



Rear Facing Mode Install using ISOGO (if fitted)

Attach the top tether strap

Attach the top tether strap to the upper anchorage point in the vehicle.

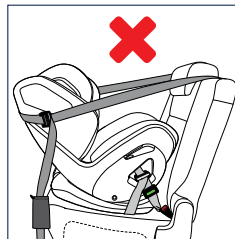
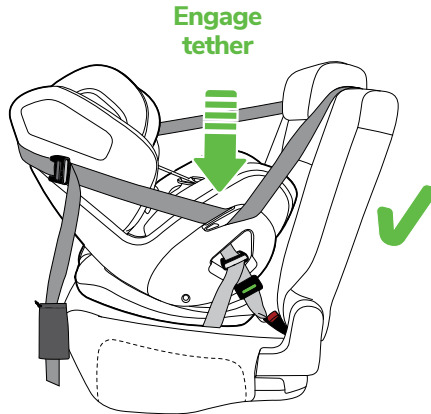


Thread tether through SMART Guide®

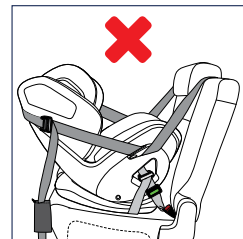
Take the tether on the door side of the restraint and thread through the SMART Guide®.

IMPORTANT:

- The tether function **MUST** be used for this restraint.
- Thread the tether through the SMART Guide® on the **DOOR SIDE ONLY**.
- Only the tether on the side furthest from the door is to remain in the conventional position.
- If installed in center of seat, use **ONE SIDE ONLY**



Never engage conventional tether position on both sides of restraint.



Never engage tether on both sides of restraint.

Remove slack from top tether

Step 1. Remove slack only. Do not over-tighten the top tether strap so that the restraint lifts up off the vehicle seat (Figure 17).

Step 2. Ensure there are no twists and turns in the top tether strap and that the adjuster is positioned facing outwards, flat against the restraint. (Figure 18).

Step 3. Roll up excess strap and store in the storage pocket provided on the cover (Figure 19).

IMPORTANT:

Always remove slack from top tether.

A loose top tether is dangerous.

CAUTION: CHILDREN CAN BE INJURED OR RESTRAINTS AND TOP TETHER STRAP DAMAGED BY UNSECURED CARGO IN A COLLISION. SECURE OR REMOVE HAZARDOUS CARGO BEFORE USING THIS CHILD RESTRAINT

Always secure the loose end of the top tether strap to prevent it hanging out of the car or being accessible by the child.

When not in use, fold hanging tether strap and place in storage pocket provided.

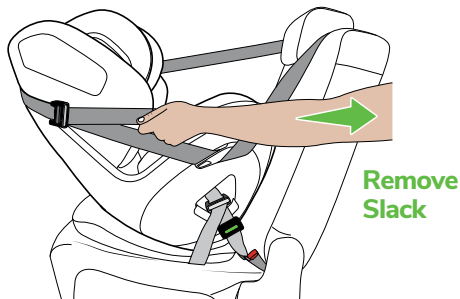


Figure 17

No twists

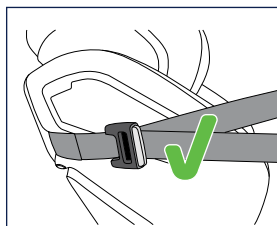


Figure 18

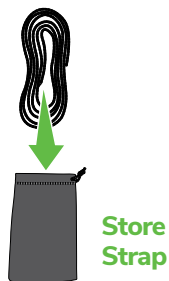


Figure 19

Rear Facing Mode

Install using Seatbelt

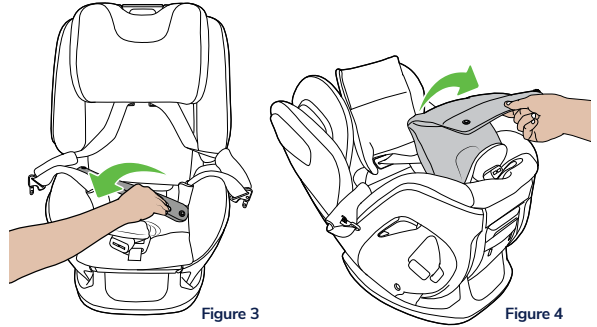
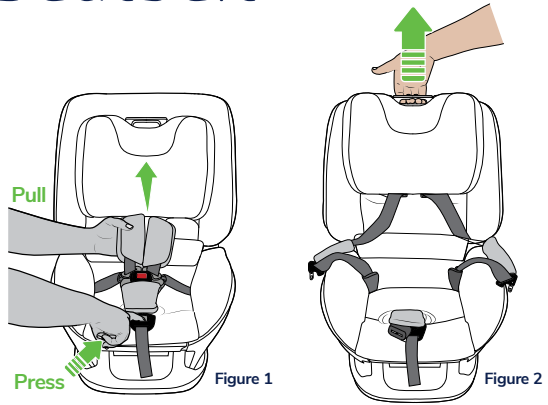
Open installation door

Step 1. Loosen and un-buckle harness and remove newborn insert (Figure 1).

Step 2. Raise the height of the seat headrest (Figure 2).

Step 3. Unbutton the seat trim on the backrest (Figure 3).

Step 4. Continue to fold the fabric down and lift up to open the installation door (Figure 4).



Lock installation door in open position

The installation door can be locked in open position to allow easy access to the installation path.

Step 1. Lift the SMART Lock® handle up (Figure 5).

Step 2. Continue to pull the SMART Lock® handle until it reaches the underside of the open installation door (Figure 6).

Step 3. Press SMART Lock® against installation door until it catches and holds the door open (Figure 6).

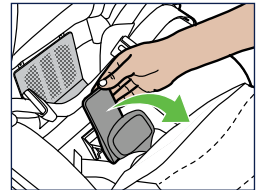


Figure 5

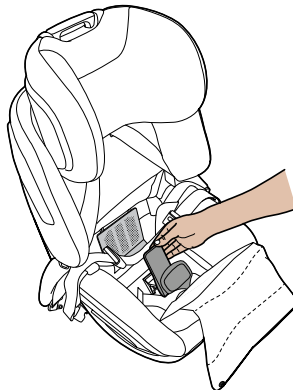


Figure 6

Route Seatbelt through Rearward Facing Belt Path

Step 1. Fully lengthen the seatbelt and thread through the blue rearward facing belt path opening at the side of the seat (Figure 7).

Step 2. Follow the installation path labels (Figure 8) and feed the seatbelt through the open SMART Lock® (Figure 9) the slots at the opposite side of the seat (Figure 10).

Step 3. Fasten the buckle. Listen for a 'click!' (Figure 11).

Step 4. Ensure there are no twists.

No twists

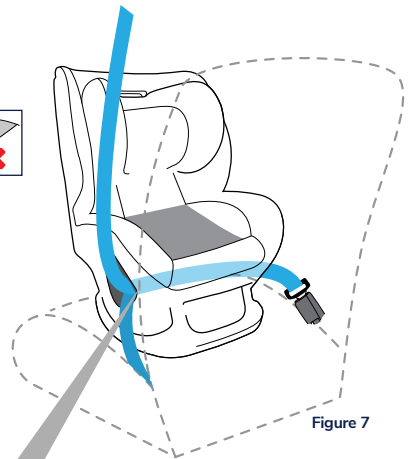


Figure 7

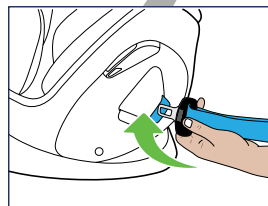


Figure 8

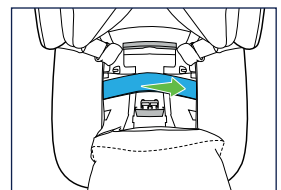


Figure 9

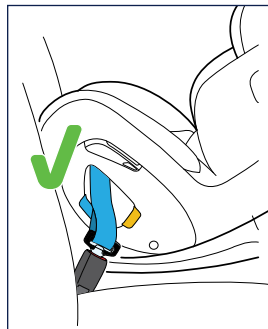


Figure 10

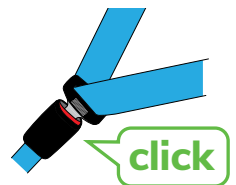


Figure 11

Rear Facing Mode Install using Seatbelt

Remove Slack from Seatbelt

Step 1. Press the restraint down firmly into the vehicle seat (Figure 12).

Step 2. Remove belt slack by pulling on the sash portion of the belt so the lap portion is taught.

Step 3. Remove all the slack first from the lap and sash belts before operating the SMART Lock® (see following step).

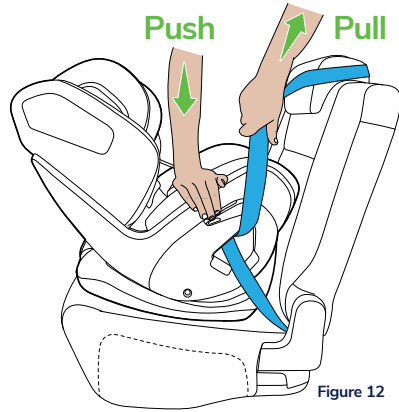


Figure 12

IMPORTANT:

Always remove slack from seatbelt.

A loose seatbelt is dangerous.

Close SMART Lock® and restore seat fabric

Step 1. Press the clamp handle down firmly to tighten and lock the vehicle seat belt installation (Figure 13).

Step 2. Ensure both tension indicators show green after locking the SMART Lock® (Figure 14).

NOTE: Indicators will stay black if installed incorrectly.

Step 3. Close installation door, button up seat trim and re-install infant inserts (if in use) (Figure 15).

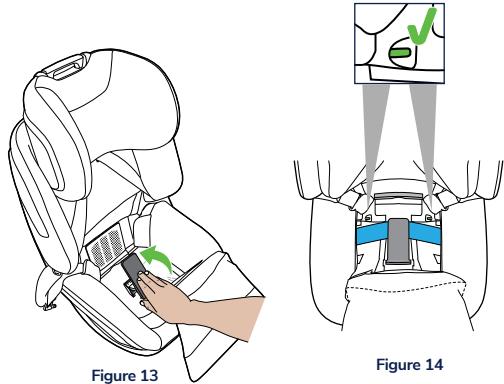


Figure 13

Figure 14

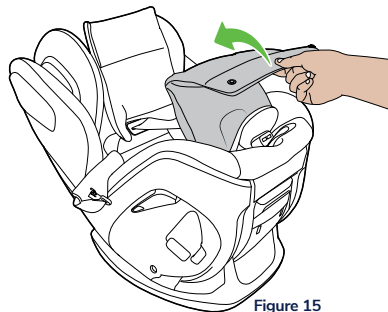
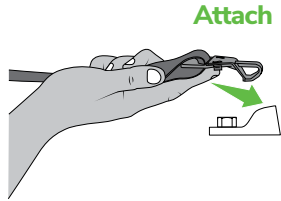


Figure 15

Attach the top tether strap

Attach the top tether strap to the top anchorage point in the vehicle.

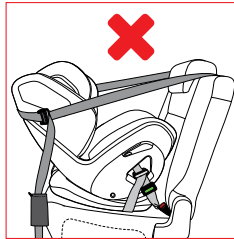
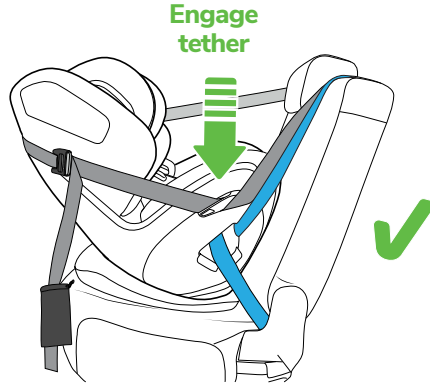


Thread tether through SMART Guide®

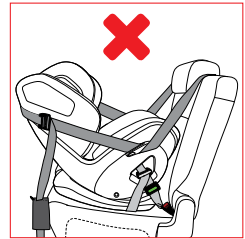
Take the tether on the door side of the vehicle and thread through the SMART Guide® on the side of the restraint.

IMPORTANT:

- The SMART Guide® function **MUST** be used for this restraint.
- Thread the tether through the SMART Guide® on the **DOOR SIDE ONLY**.
- Only the tether on the side furthest from the door is to remain in the conventional position.



Never engage conventional tether position on both sides of restraint.



Never engage tether on both sides of restraint.

Rear Facing Mode Install using Seatbelt

Remove slack from top tether

Step 1. Remove slack only. Do not over-tighten the top tether strap so that the restraint lifts up off the vehicle seat (Figure 1).

Step 2. Ensure there are no twists and turns in the top tether strap and that the adjuster is positioned facing outwards, flat against the restraint (Figure 2).

Step 3. Roll up excess strap and store in the pocket provided on the cover (Figure 3).

IMPORTANT:

Always remove slack from top tether.
A loose top tether is dangerous.

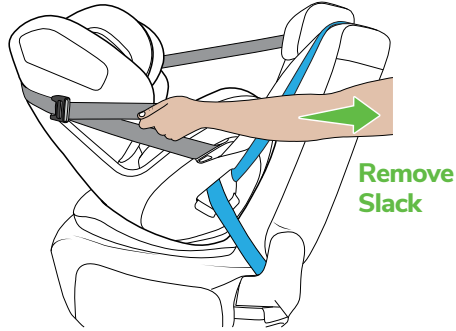


Figure 1

No twists

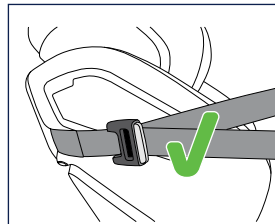
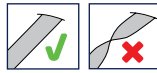


Figure 2

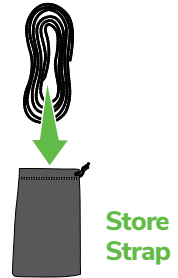


Figure 3

Loosening the top tether

Step 1. Press top tether adjust button (grey - Figure 4)

Step 2. Simultaneously, pull the tether strap through the adjuster to loosen as required.

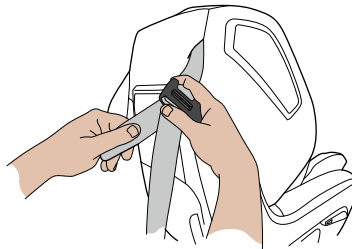


Figure 4

⚠ WARNING

DO NOT LEAVE CHILDREN UNATTENDED IN THE CAR.

How to use

Release harness straps

Step 1. Loosen harness straps by pushing down the harness release button at the front of the restraint and simultaneously pulling the shoulder straps (Figure 1).

Step 2. Release harness by pressing the red button on the buckle (Figure 2).

Step 3. Pull the harness straps over the sides of the child restraint.

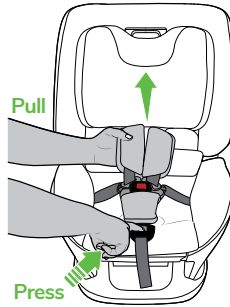


Figure 1

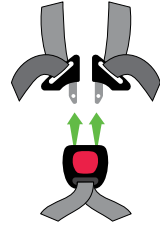


Figure 2

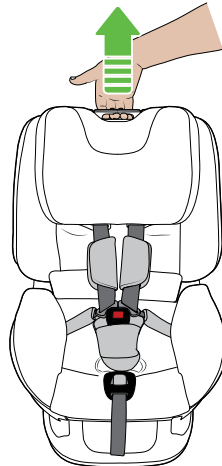
Adjusting headrest and harness height

Adjusting the headrest height will simultaneously adjust the harness height.

Step 1. Estimate harness height based on child.

Step 2. Press adjuster to release headrest mechanism, pull or push simultaneously to adjust headrest up or down.

Step 3. Release adjuster when correct height is reached, ensuring the headrest is locked in position.



TIP Fold back padding inwards and upwards when headrest is in the lowest position.

Roll down back padding as headrest is moved up.

Rear Facing Mode How to use

Place child in the restraint

Step 1. Place child in the restraint (Figure 3).

Step 2. Place harness straps over child's shoulders and position buckle between child's legs (Figure 4).

Step 3. Insert harness tongues into the harness buckle, listen for 'click' (Figure 5).

Step 4. Pull on harness straps to ensure proper engagement.

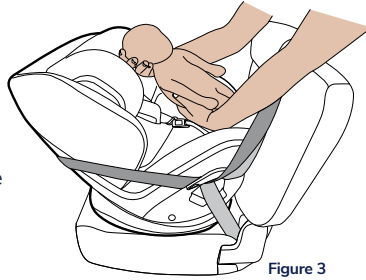


Figure 3

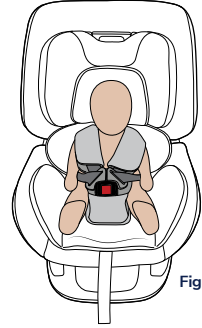


Figure 4

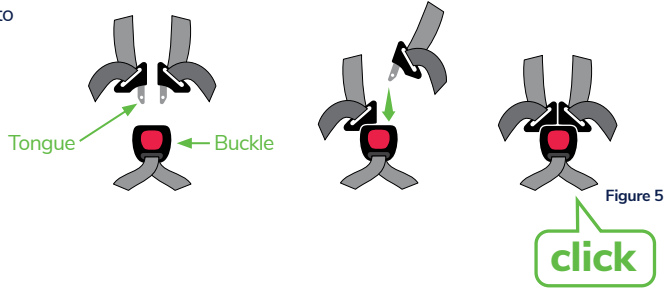


Figure 5

Set headrest and harness height

Step 1. Re-adjust headrest and harness height until correct height is reached for your child (Figure 6).

Step 2. The harness straps are to be level with shoulders or slightly above, but not below (Figure 7).

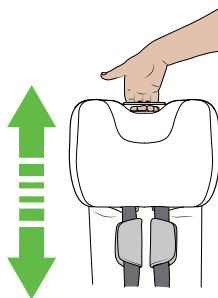


Figure 6

Harness straps in green zone

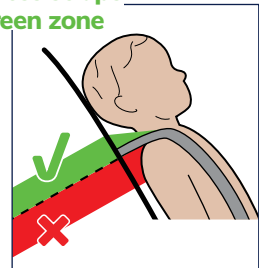


Figure 7

Always adjust the height of the shoulder straps as the child grows

Tighten the harness

Step 1. Before pulling on adjuster strap to tighten harness, pull on harness shoulder straps first to remove slack from the waist area (Figure 8).

Step 2. Once slack is removed, pull on adjuster strap so that the harness over the shoulders is firm (Figure 9).

Step 3. Pinch the straps near the top of the shoulder to check for correct fitment. This is achieved when you are unable to pinch the harness (Figure 10). If you can pinch the harness, tighten more.

Step 4. You may need to use a ratchet motion after tightening to remove additional slack.

TIP Always use the Pinch test when you buckle your child as your harness may need adjusting.

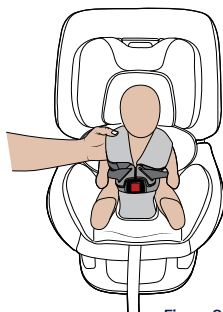


Figure 8

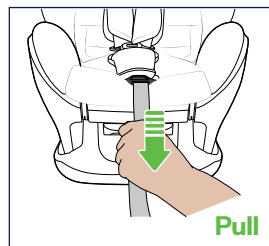


Figure 9

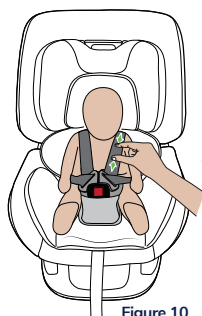


Figure 10

⚠ WARNING

DO NOT LEAVE CHILDREN UNATTENDED IN THE CAR.

This page has been
left blank intentionally



Forward Facing Mode Instructions

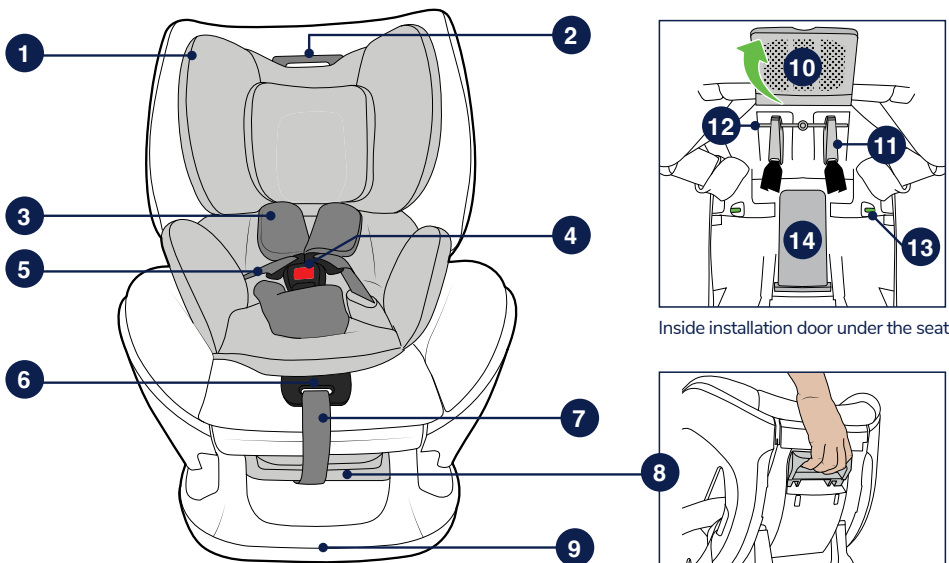
Congratulations! Your child has reached their forward facing height markers. It is time to turn your seat around. Your child should now have the head and muscle strength to lift and hold their head up.

Here's a quick check list before you install your child restraint in forward facing mode:

- Check that your child's upper shoulders are NOT below the minimum height marker and if they are, continue using in rearward facing mode.
- Check that your child's upper shoulders are NOT above the upper height marker and if they are, your child may be ready for a booster or harnessed booster seat.
- Infant body and head hugger inserts have been removed.
- Harness height is level or in the slot closest to child's shoulder height.
- Forward facing recline setting 1, 2,3,4 or 5 is selected.

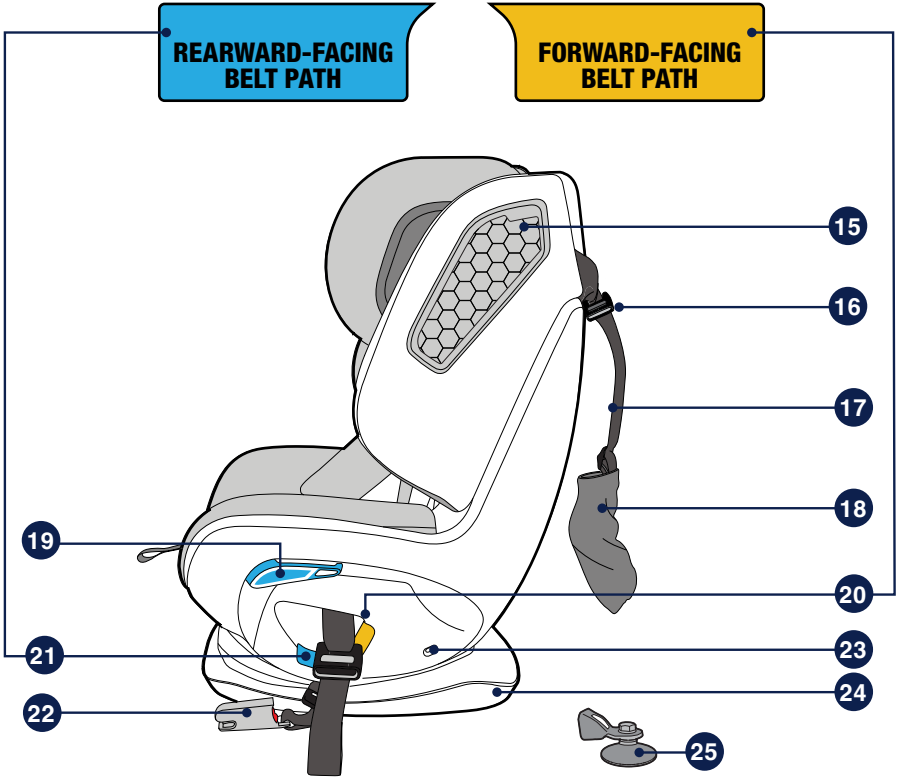
Forward Facing Mode

Components



Inside installation door under the seat

1. Air Protect® Cell (x2)
2. Headrest Adjuster
3. Harness Pads
4. Buckle
5. Six-Point Harness
6. Harness Release Button (under cover)
7. Harness Tightening Strap
8. Seat Recline Lever
9. Base
10. ISOGO Storage Compartment Door
11. ISOGO Connectors (x2 - if fitted)
12. ISOGO Storage Rod
13. Tension Indicators (x2)
14. SMART Lock®



- | | |
|--|---|
| 15. G-Cell (x2 - if fitted) | 21. Rearward-Facing Belt Path Indicator |
| 16. Top Tether Strap Adjuster | 22. ISOGO Connectors (x2 - if fitted) |
| 17. Top Tether Strap | 23. Recline Indicator |
| 18. Storage Pocket (instruction manual & excess tether straps) | 24. Base |
| 19. SMART Guide® (install in Rearward Facing Mode only) | 25. Anchor Kit (comes attached to top tether) |
| 20. Forward-Facing Belt Path Indicator | |

Forward Facing Mode

Preparation before install

Convert seat to forward facing mode

Recline adjustment

The seat is fitted with five (5) forward facing recline positions. Position one is the most upright and position five is the most reclined angle.

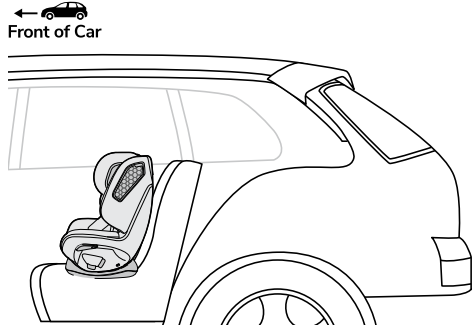
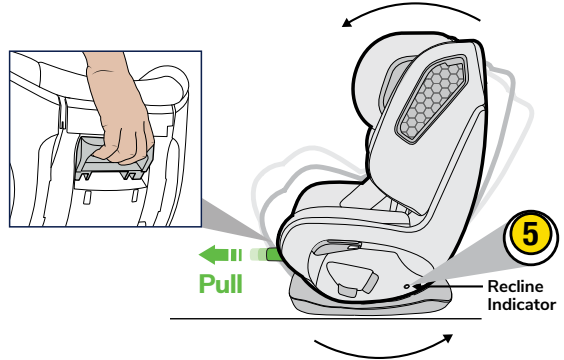
Step 1. Place hand under seat and squeeze the grey recline handle.

Step 2. Whilst squeezing, tilt the seat back gently to recline.

Step 3. Release the handle when desired mode is reached.

IMPORTANT:

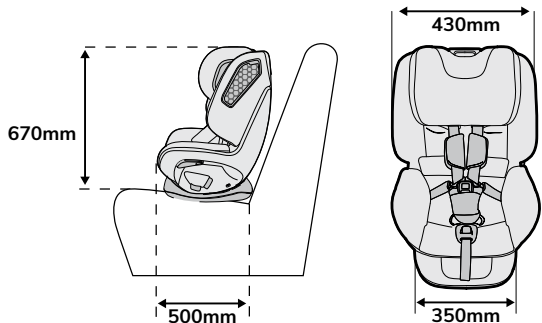
Never use recline position six for forward-facing, as this setting is for rear-facing mode only.



Place child restraint in vehicle

Place restraint in forward facing position in vehicle.

Place restraint facing forwards on seat of vehicle in line with a top tether strap anchorage point.



Ensure your vehicle has an upper anchorage fitting

Figure 1 shows possible locations where you might find the upper anchor point in your vehicle. The upper anchor point may be found in different locations in different vehicles, refer to your vehicle owner's manual for more information if required.

See page 63-64 for more information on upper anchorage point fittings.

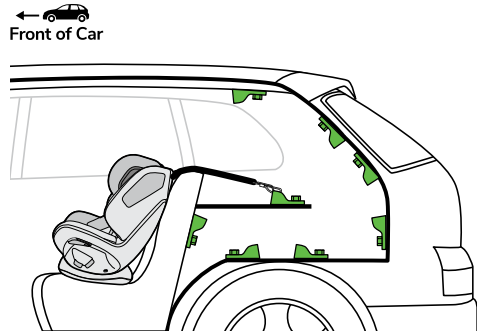


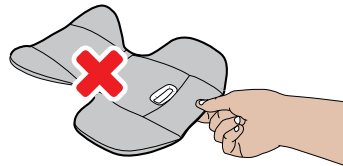
Figure 1

Remove infant padding

Ensure all infant padding has been removed prior to installing forward facing.

IMPORTANT:

The attachment clip cover must always be used as it prevents the risk of incorrect fitment of the attachment clip to the upper anchor point. Before each use of the restraint always ensure that the attachment clip is correctly engaged to the upper anchorage point and not hooked to or fitted to, any other object. This is especially important in vehicles such as station wagons, vans, hatch backs or vehicles without a fixed parcel shelf, since the anchor point is usually not visible.



Do not use

Forward Facing Mode

Install using ISOGO (if fitted)

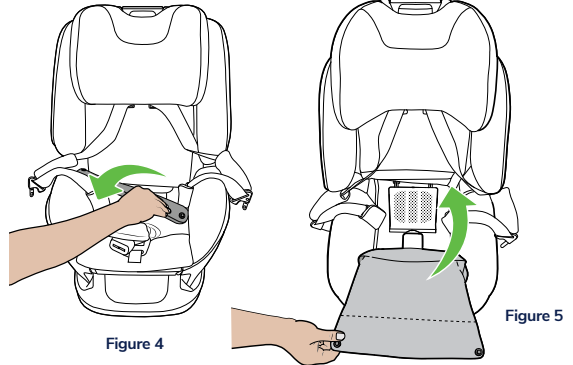
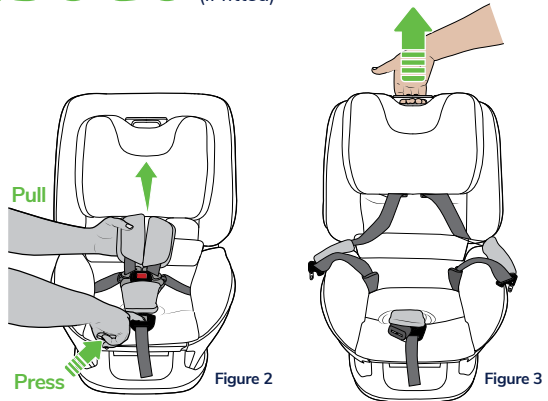
Open installation door

Step 1. Loosen and un-buckle harness (Figure 2).

Step 2. Raise the height of the seat headrest (Figure 3).

Step 3. Unbutton the seat trim at the backrest (Figure 4).

Step 4. Continue to fold the fabric down and lift up to open the installation door under the seat (Figure 5).



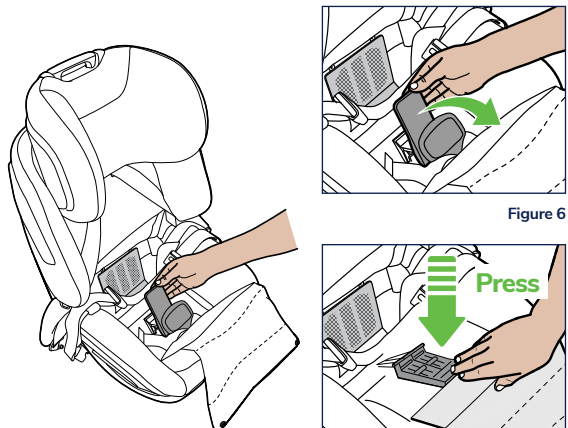
Lock installation door in open position

The installation door can be locked in open position to allow easy access to the installation path.

Step 1. Lift the SMART Lock® handle up (Figure 6).

Step 2. Continue to pull the SMART Lock® handle until it reaches the underside of the open installation door (Figure 6).

Step 3. Press SMART Lock® against installation door until it catches and holds the door open (Figure 7).



Unclip the ISOGO connectors

Step 1. Open ISOGO storage compartment door on the backrest portion of the seat to reveal the ISOGO connectors (Figure 8).

Step 2. Unclip the ISOGO connectors from the storage rod by pushing the buckle button (Figure 9).

Step 3. Remove the straps from the storage location.

Step 4. Close the access door (Figure 10).

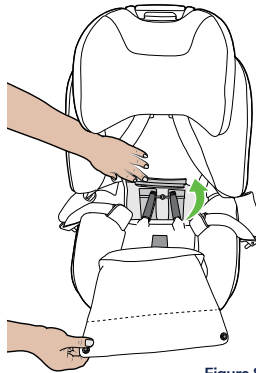


Figure 8

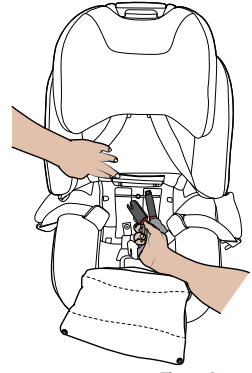


Figure 9

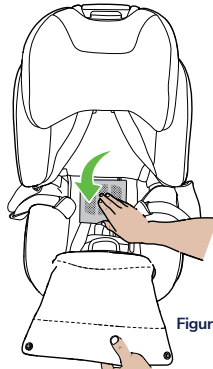


Figure 10

Thread the ISOGO connectors through the belt path

Step 1. Thread the ISOGO connectors through each belt path opening so the belt sits in the installation path (Figure 11 & 12).

Step 2. Centre the ISOGO straps so that they sit evenly on either side of the SMART Lock®, and the two ISOGO connectors are positioned evenly on either side of the seat (Figure 12).

This will make it easier to keep the restraint centered when installing into vehicle.

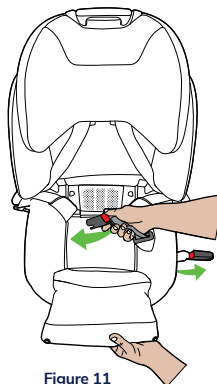


Figure 11

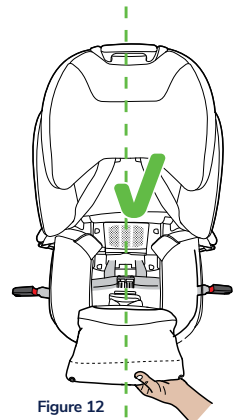
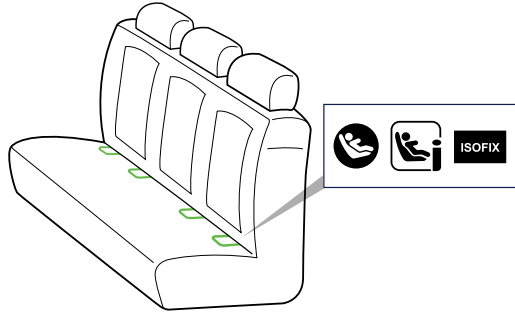


Figure 12

Forward Facing Mode Install using ISOGO (if fitted)

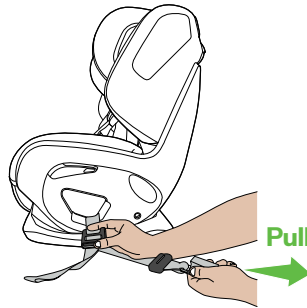
Locate the ISOFIX low anchorage points

Locate the low anchorage points. You can find these by looking for the ISOFIX logo located on the vehicle seat. Refer to your vehicle owner's manual for more information if required.



Fully lengthen ISOGO connector straps

Press and hold the ISOGO adjuster release button and pull the connector strap to fully lengthen. Repeat for the other connector.



Attach ISOGO connectors

Step 1. Attach the lower connectors on both sides. Listen for a 'click!' (Figure 13).

Step 2. Pull to check connection (Figure 14).

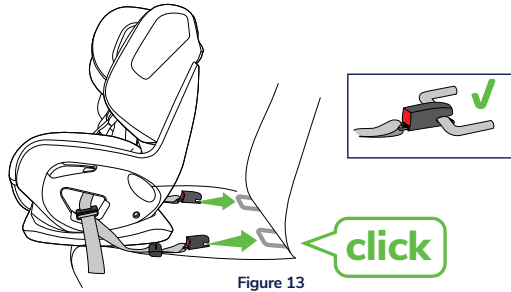


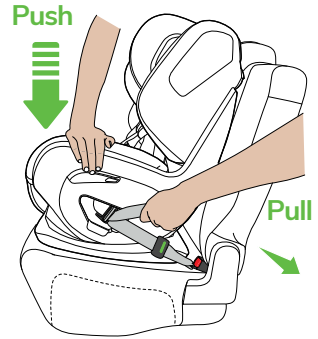
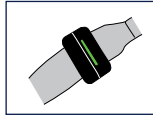
Figure 14

Tighten ISOGO straps

Step 1. Press the child restraint down firmly into the vehicle seat and pull on the ISOGO straps until the ISOGO strap tension indicators show full green.

Step 2. Ensure the two strap adjusters are evenly spaced either side of the seat and not hanging out of the seat belt route opening.

Tension Indicator



Close SMART Lock® and restore seat fabric

Step 1. Press the SMART Lock® down firmly to tighten and lock the ISOGO strap in place (Figure 15).

Step 2. Ensure both tension indicators show green after locking the SMART Lock®. (Figure 16).
NOTE: Indicators will stay black if installed incorrectly.

Step 3. Close installation door, button up seat trim (Figure 17).

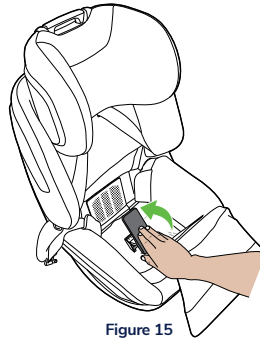


Figure 15

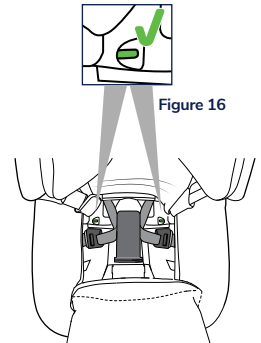


Figure 16

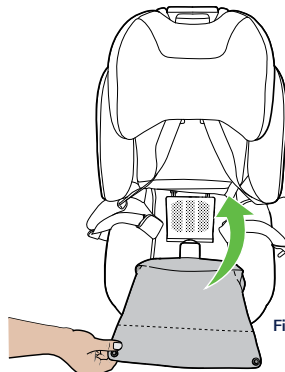
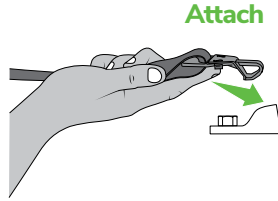


Figure 17

Forward Facing Mode Install using ISOGO (if fitted)

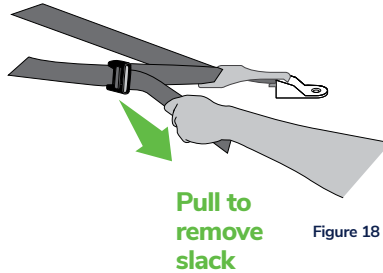
Attach the top tether to vehicle

Attach the top tether strap to the upper anchorage point in the vehicle.



Tightening top tether

Pull the loose end to tighten top tether; but not so that the restraint lifts up off the vehicle seat (Figure 18).



Remove slack from top tether

Step 1. Remove slack only. Do not over-tighten the top tether strap so that the restraint lifts up off the vehicle seat (Figure 18).

Step 2. Ensure there are no twists and turns in the top tether strap and that the adjuster is positioned facing outwards (Figure 18).

Note: There will be a half twist in the top tether strap between the adjuster and the shell of the restraint, allowing the adjuster to be positioned facing outwards.

Step 3. Roll up excess strap and store in the pocket provided on the cover. (Figure 19).



Figure 19

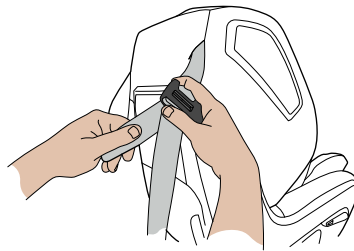


Figure 20

IMPORTANT:

Always remove slack from top tether.

A loose top tether is dangerous.

Loosening the top tether

Step 1. Press top tether adjust button (grey) (Figure 20)

Step 2. Simultaneously, pull the tether strap through the adjuster to loosen as required.

CAUTION: CHILDREN CAN BE INJURED OR RESTRAINTS AND TOP TETHER STRAP DAMAGED BY UNSECURED CARGO IN A COLLISION. SECURE OR REMOVE HAZARDOUS CARGO BEFORE USING THIS CHILD RESTRAINT

Always secure the loose end of the top tether strap to prevent it hanging out of the car or being accessible by the child.

When not in use, fold hanging tether strap and place in storage pocket provided.

Store ISOGO connectors away

Ensure ISOGO connectors are secured and stored in their compartment under the restraint fabrics.

Step 1. Open ISOGO storage compartment door and lock the ISOGO connectors to the rod provided inside (Figure 21). Ensure connectors face outwards for ease of storage.

Step 2. Store all straps and tension indicators in compartment (Figure 21) with belt adjusters positioned at base of compartment as shown (Figure 22).

Step 3. Close and lock the compartment door (Figure 23).

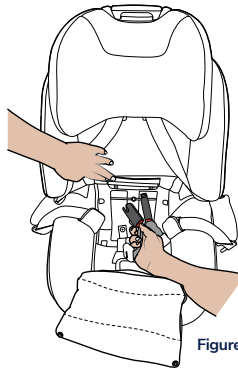


Figure 21

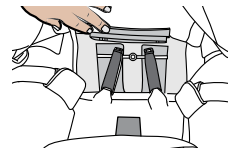


Figure 22

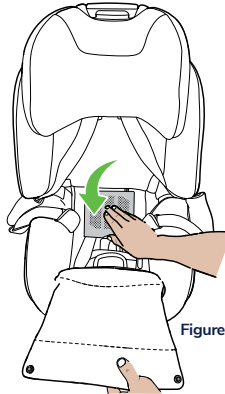


Figure 23

Forward Facing Mode

Install using Seatbelt

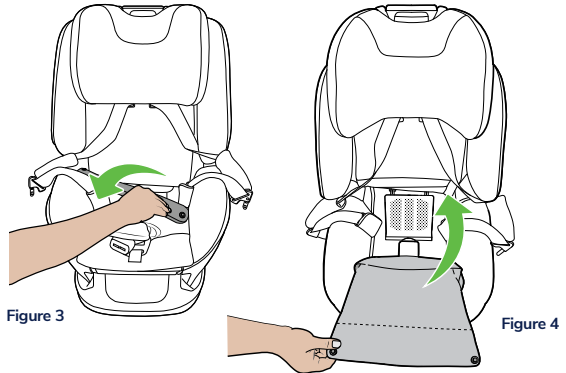
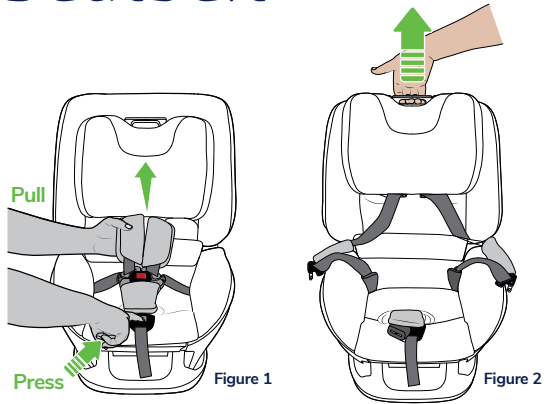
Open installation door

Step 1. Loosen and un-buckle harness (Figure 1).

Step 2. Raise the height of the seat headrest (Figure 2).

Step 3. Unbutton the seat trim at the backrest (Figure 3).

Step 4. Continue to fold the fabric down and lift up to open the installation door under the seat (Figure 4).



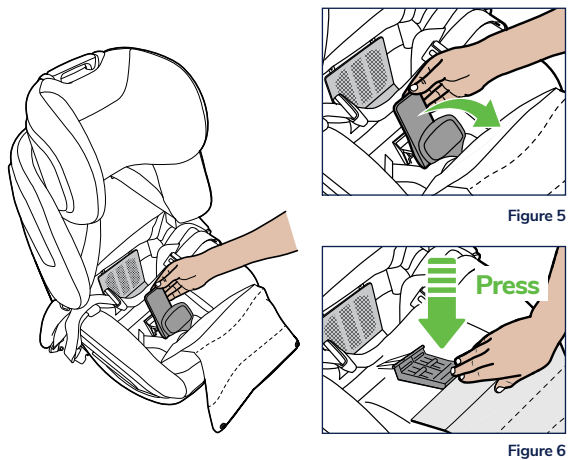
Lock installation door in open position

The installation door can be locked in open position to allow easy access to the installation path under the seat.

Step 1. Lift the SMART Lock® handle up (Figure 5).

Step 2. Continue to pull the SMART Lock® handle until it reaches the underside of the open installation door (Figure 6).

Step 3. Press SMART Lock® against installation door until it catches and holds the door open (Figure 6).



Route seatbelt through forward facing belt path

Step 1. Fully lengthen the seatbelt and thread through the yellow forward facing belt path opening at the side of seat (Figure 7).

Step 2. Follow the installation path labels (Figure 8) and feed the seatbelt over the open SMART Lock® (Figure 9) and through the slots at the opposite side of the seat (Figure 10).

Step 3. Fasten the buckle. Listen for a 'click'!

Step 4. Ensure there are no twists.

Step 5. Ensure harness waist strap is not caught in car seat harness when feeding through SMART Lock®.

TIP Use Magnetic Harness Holders to keep harness clear from seatbelt and SMART Lock®.

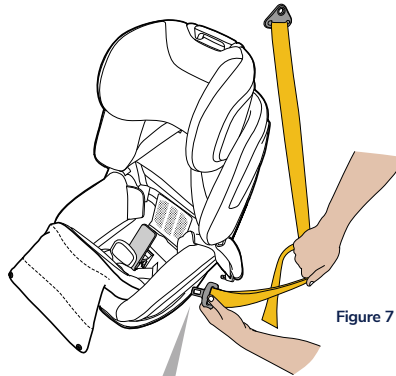


Figure 7

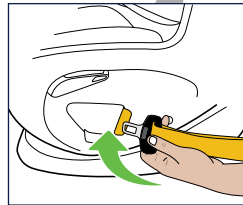


Figure 8

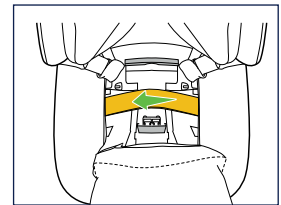


Figure 9



No twists

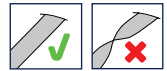


Figure 10

Forward Facing Mode Install using Seatbelt

Remove slack from seatbelt

Step 1. Press the child restraint down firmly into the vehicle seat.

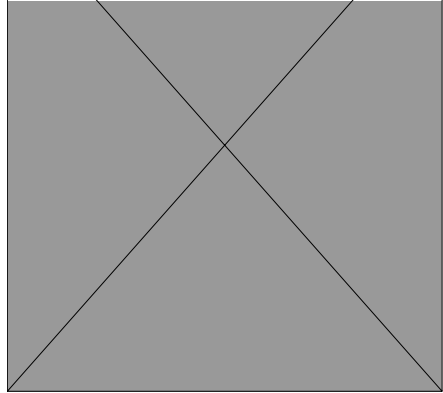
Step 2. Remove belt slack by pulling on the sash portion of the belt so the lap portion is taught.

Step 3. Remove all the slack first from the lap and sash belts before operating the SMART Lock®.

IMPORTANT:

Always remove slack from seatbelt.

A loose seatbelt is dangerous.



Close SMART Lock® and restore seat fabric

Step 1. Press the SMART Lock® down firmly to tighten and lock the vehicle seat belt installation (Figure 11).

Step 2. Ensure both tension indicators show green after locking the SMART Lock® (Figure 12).

NOTE: Indicators will stay black if installed incorrectly.

Step 3. Close installation door and button up seat trim (Figure 13).

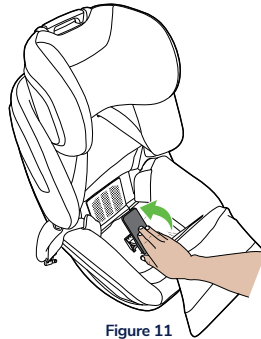


Figure 11

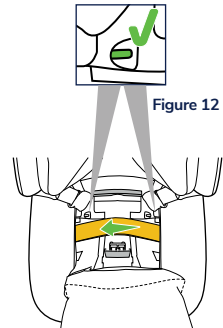


Figure 12

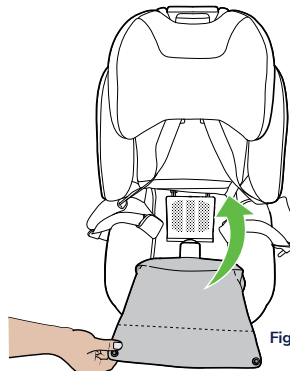


Figure 13

Attach the top tether strap

Attach the top tether strap to the upper anchorage point in the vehicle.

Tightening Top Tether

Step 1. Ensure there are no twists and turns in the top tether strap and that the adjuster is positioned facing outwards (Figure 14).

Note: There will be a half twist in the top tether strap between the adjuster and the shell of the restraint, allowing the adjuster to be positioned facing outwards.

Step 2. Roll up excess strap and store in the pocket provided on the cover. (Figure 15).

Loosening the top tether

Step 1. Press top tether adjust button (grey) (Figure 16)

Step 2. Simultaneously, pull the tether strap through the adjuster to loosen as required.

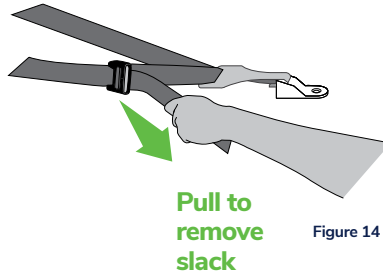
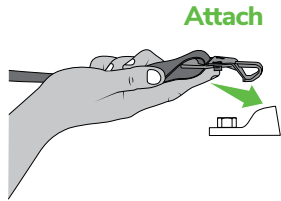


Figure 14



Figure 15

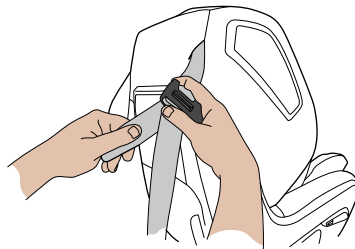


Figure 16

CAUTION: CHILDREN CAN BE INJURED OR RESTRAINTS AND TOP TETHER STRAP DAMAGED BY UNSECURED CARGO IN A COLLISION. SECURE OR REMOVE HAZARDOUS CARGO BEFORE USING THIS CHILD RESTRAINT

Always secure the loose end of the top tether strap to prevent it hanging out of the car or being accessible by the child.

When not in use, fold hanging tether strap and place in storage pocket provided.

Forward Facing Mode

How to use

Release harness straps

Step 1. Loosen harness straps by pushing down the harness release button at the front of the seat and simultaneously pulling the shoulder straps (Figure 17).

Step 2. Release harness by pressing the red button on the buckle (Figure 18).

Step 3. Pull the harness straps over the sides of the seat.

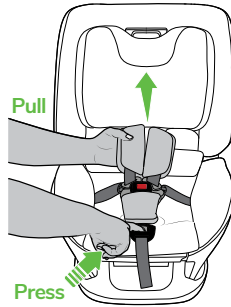


Figure 17

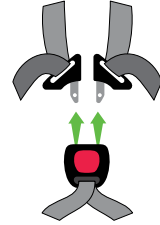


Figure 18

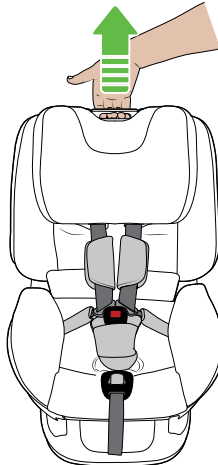
Adjusting headrest and harness height

Adjusting the headrest height will simultaneously adjust the harness height.

Step 1. Estimate harness height based on child.

Step 2. Press adjuster to release headrest mechanism, pull or push simultaneously to adjust headrest up or down.

Step 3. Release adjuster handle when correct height is reached, ensuring the headrest is locked in position.



Place child in the restraint

Step 1. Place child in the seat, fit harness straps over child's shoulders and position buckle between child's legs (Figure 19).

Step 2. Insert harness tongues into the harness buckle, listen for 'click' (Figure 20).

Step 3. Pull on harness straps to ensure proper engagement

Step 4. Ensure there are no twists.

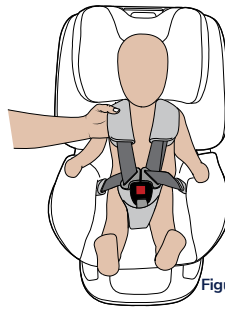


Figure 19

No twists

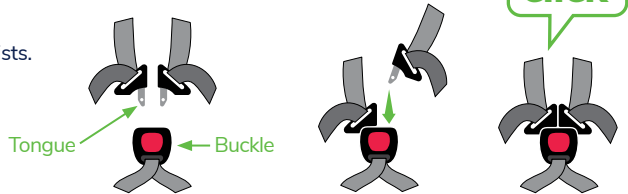
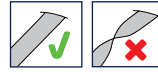


Figure 20

Set headrest and harness height

Step 1. Re-adjust headrest and harness height until correct height is reached for your child (Figure 21).

Step 2. The shoulder straps must be in the slots which are nearest to the child's shoulders but not more than 25mm below the child's shoulders. (Figure 22).

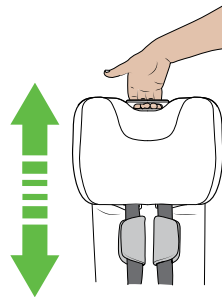


Figure 21

Harness straps in green zone

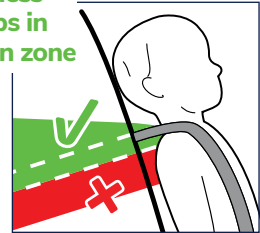


Figure 22

Always adjust the height of the shoulder straps as the child grows

Forward Facing Mode

Tighten the harness

Step 1. Before pulling on adjuster strap to tighten harness, pull on harness shoulder straps first to remove slack from the waist area (Figure 23).

Step 2. Once slack is removed, pull on adjuster strap so that the harness over the shoulders is firm (Figure 24).

Step 3. Pinch the straps near the top of the shoulder to check for correct fitment. This is achieved when you are unable to pinch the harness (Figure 25). If you can pinch the harness, tighten more.

Step 4. You may need to use a ratchet motion after tightening to remove additional slack.

TIP Always use the Pinch test when you buckle your child as your harness may need adjusting.

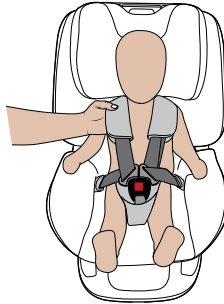


Figure 23

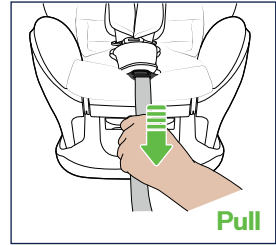


Figure 24

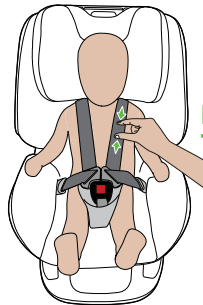


Figure 25

 **WARNING**

DO NOT LEAVE CHILDREN UNATTENDED IN THE CAR.



Additional Information

Regularly checking and maintaining your seat will ensure your seat remains comfortable and safe for your child.

This additional information section details information on:

- Seat Guide
- Care and maintenance
- Anchorage fittings
- Your Maxi-Cosi guarantee

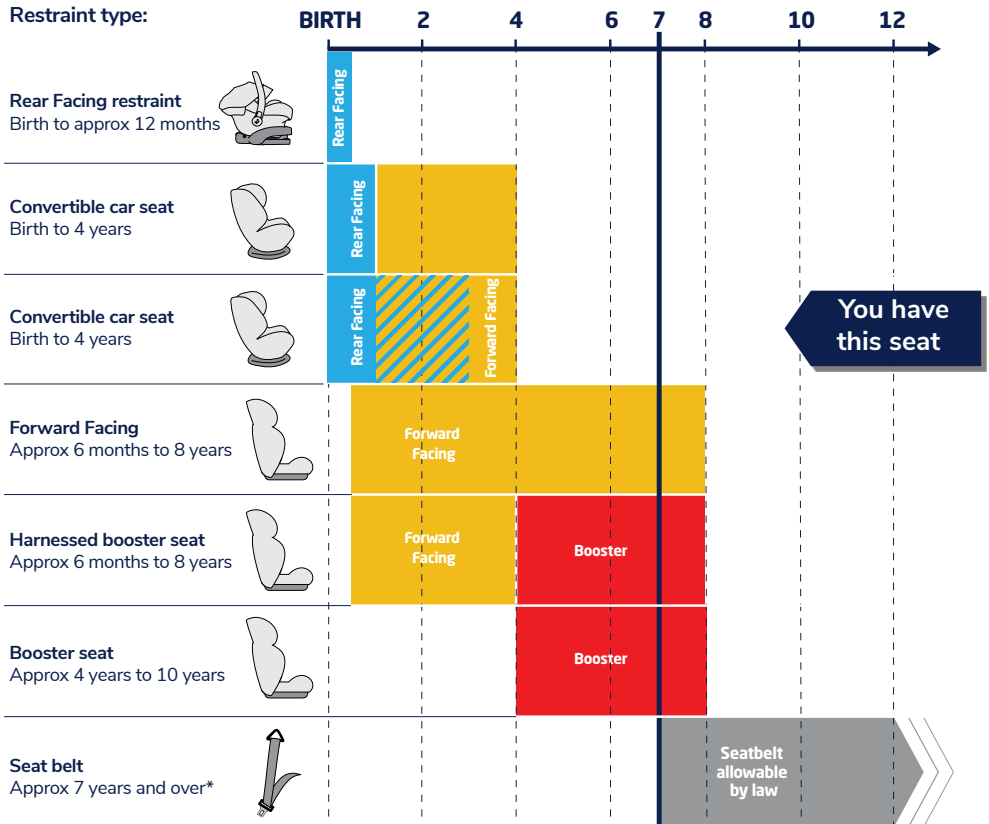
Additional Information

Seat Guide

Your Pria convertible car seat is suitable from newborn to approximately 4 years of age. Once your child has outgrown this seat, it is time for you to move your child into either a harnessed booster or booster seat.

■ Infant Seat ■ Child Seat ■ Extended Rear Facing ■ Booster Seat ■ Seat Belt

Restraint type:



*Check with your local state regulations

Additional Information

Care and Maintenance

Caring for the Restraint Buckle

When caring for your restraint's buckle, follow the manufacturer's instructions at all times.

Your child car seat is equipped with a buckle designed to give your child maximum protection during proper use. When working properly, your buckle should always fasten with an audible 'CLICK'.

If sticky liquids (such as baby food, fruit juice, etc.) get into the buckle it may become sluggish and you will not hear a 'CLICK'.

The buckle should be cleaned by following the steps below.

Cleaning the buckle

Step 1. You can remove the seat trim cover so it does not get wet or dirty during the cleaning process (Figure 1).

Step 2. Fill any shallow container with 40°C water.

Step 3. Lay the buckle gently into the container and let it soak for 30 mins. (Figure 2).

Step 4. Simultaneously latch and unlatch the buckle tongues into the buckle several times until a strong audible CLICK is heard.

Step 5. If you cannot hear an audible CLICK then repeat steps 2 - 4 above again.

Step 6. Allow the buckle to completely dry before fitting on the trim.

Caution:

Do not oil any part of buckle. Water may be hot so proceed with care.

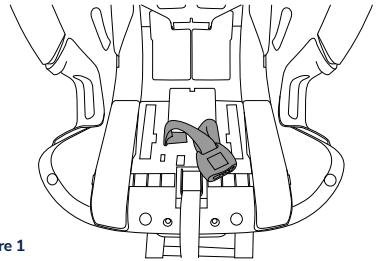


Figure 1

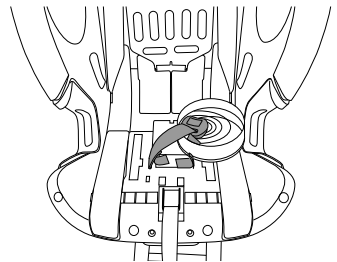


Figure 2

NOTE: If the buckle does not return to original working order, contact Dorel Australia Customer Service on 1300 809 526.

If you are a New Zealand customer, please contact IGC Dorel New Zealand Customer Service on 0800 628 000.

To remove fabric accessories

Step 1. Remove the belt mates by unclipping the press-studs (Figure 1).

Step 2. Remove the inserts.

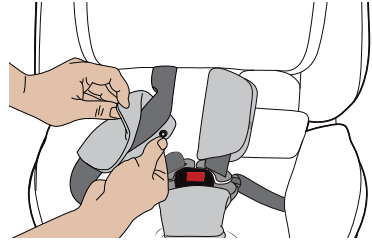


Figure 1

Removing the headrest fabrics

Step 1. First, adjust the headrest into the highest position. You may need to loosen the harness first.

Step 2. Undo the two press studs connecting the headrest and the back flap (Figure 2).

Step 3. Release the press studs connected to the hard goods (Figure 3).

Step 4. Once the press studs are released, pull the headrest fabrics away from the bottom upwards (Figure 4).

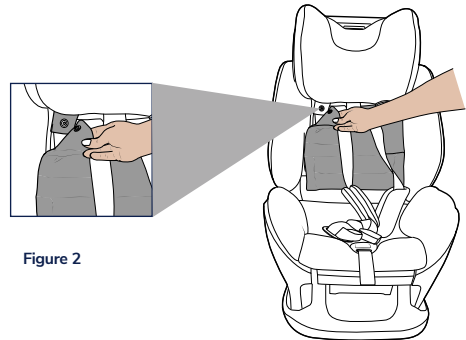


Figure 2

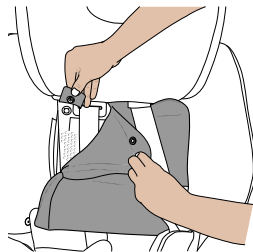


Figure 3

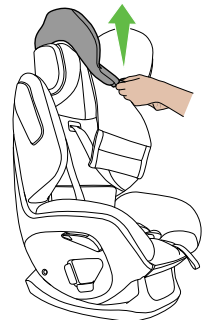


Figure 4

To remove the lower body fabrics

- Step 1.** Detach press studs (Figure 5) and lift up the center flap.
- Step 2.** Detach press studs on the inner side panels and pull panels towards the front of the seat.
- Step 3.** Pull plastic clip (x2) at the front of the trim.
- Step 4.** Pull the fabric away from the plastic cover around the harness adjuster and by holding the back flap, pulling upwards to remove the full fabric cover (Figure 6/7).

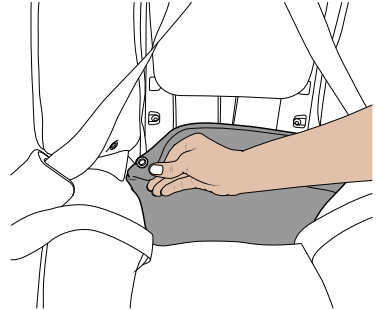
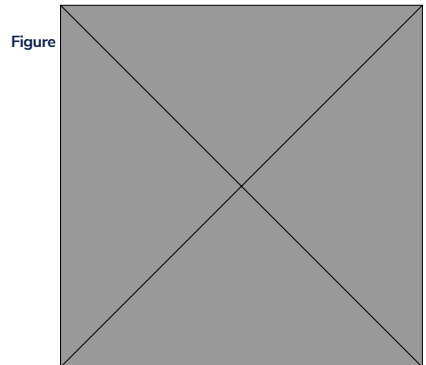


Figure 5



Figure 6



Figure

To remove the upper body fabrics

Pria

Step 1. At the back of the seat detach the press studs (Figure 8).

Step 2. Detach press studs (Figure 9) and release fabric around the plastic cover

Step 3. From the bottom of the cover lift upwards to remove (Figure 10).

Pria G-Cell

Step 1. At the back of the seat detach the press studs (Figure 8).

Step 2. Detach press studs (Figure 9) and release fabric around the plastic cover

Step 3. From the bottom of the cover lift upwards to remove. Releasing fabric around the G-Cell panel as you lift (Figure11).

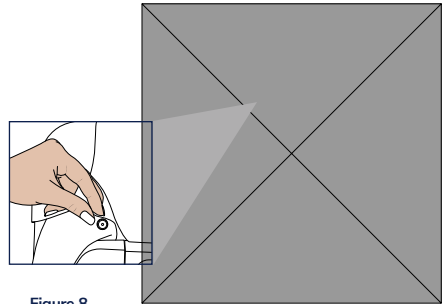


Figure 8

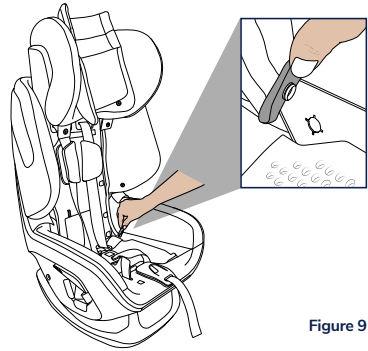


Figure 9

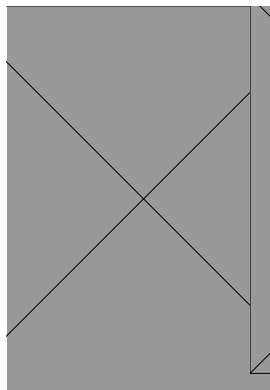


Figure 10

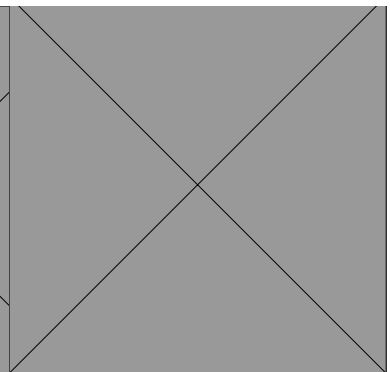


Figure 11

Pria Headrest install

Step 1. Ensure headrest is in highest position and harness is loose.

Step 2. Find tab on bottom of headrest cover, align and insert into the slot in hardware (Figure 12).

Step 3. Recover headrest from bottom up. Re-attach press studs

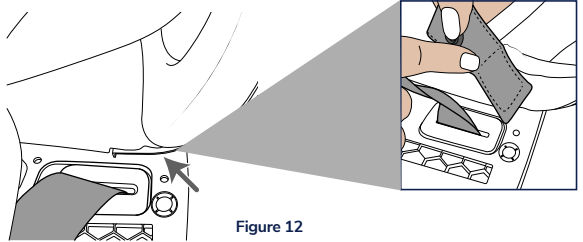


Figure 12

Upper Body install

Step 1. Reattached in reverse order, you may need to use the back of a teaspoon when tucking the fabrics in around the GCELL cover and edge of seat, to ensure a perfect fit.

Step 2. Ensure all press studs are reattached to the seat and cover is not loose.

Lower body install

Step 1. Thread side of trim into channel ensuring a firm fit (Figure 13). Firmly push end under plastic bridge (Figure 14).

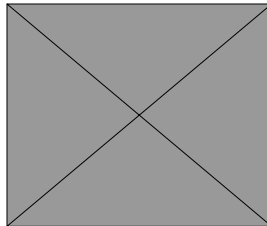


Figure 13

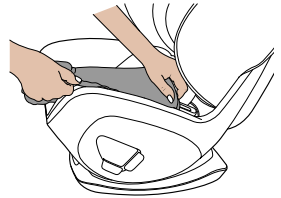


Figure 14

Step 2. Tuck around at front, ensuring J-clip is clipped into place.

Step 1. Re-attach press studs (Figure 15).

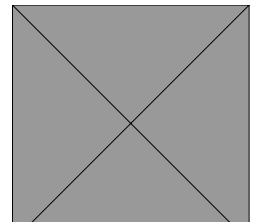
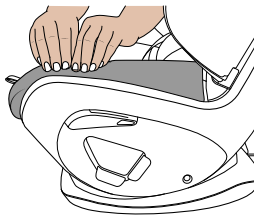


Figure 15

Washing instructions



Lukewarm setting
– delicate cycle.



Tumble dry 10-15
minutes on low heat.



Do not dry clean.



Never clean with bleach
or spirit-type cleaners.



All other surfaces
should be cleaned with
a mild soap and water.

VERY IMPORTANT:

Only replace the cover with a Maxi-Cosi supplied replacement cover with identical shoulder height markers or a replacement cover meeting AS/NZS 8005.

Additional Information

Install Upper Anchorage

For cars fitted with a child restraint upper anchorage point

Locate the upper anchorage point behind the rear seating position (consult the vehicle owner's handbook for the location of the upper anchorage point).

Remove the thread plug from the parcel shelf/floor/roof and install the attachment bolt as shown in Figure 1.

CAUTION: DO NOT OVER-TIGHTEN THE ATTACHMENT BOLT. OVER-TIGHTENING MAY FRACTURE OR BREAK BOLT. MAXIMUM TORQUE IS 20 NM.

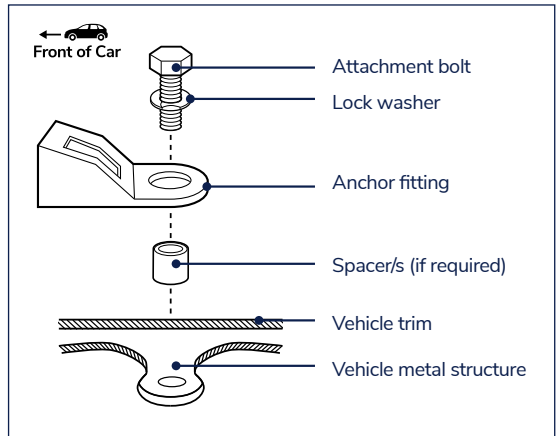


Figure 1

For cars not fitted with a child restraint upper anchorage point

For sedans only

Drill a 9mm diameter hole in the parcel shelf on the centre-line of the seating position as shown in Figure 2.

Install the anchor bolt as shown in Figure 3. It is recommended that this installation be carried out by a child restraint fitting station or licenced motor mechanic.

For vehicles other than sedans

In Australia, consult your nearest child restraint fitting station or traffic authority for vehicle inspection to find the best, correct position for the placement of the upper anchorage point, and for the correct attachment bolt length and use of spacers. In New Zealand, consult the agent for the vehicle.

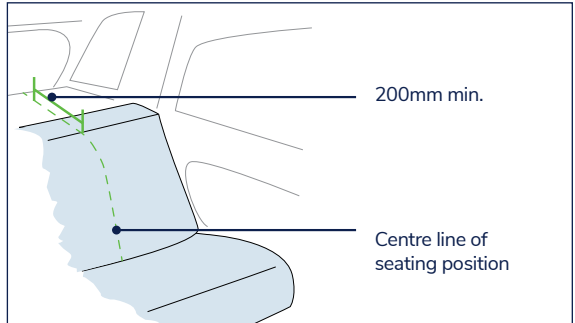


Figure 2

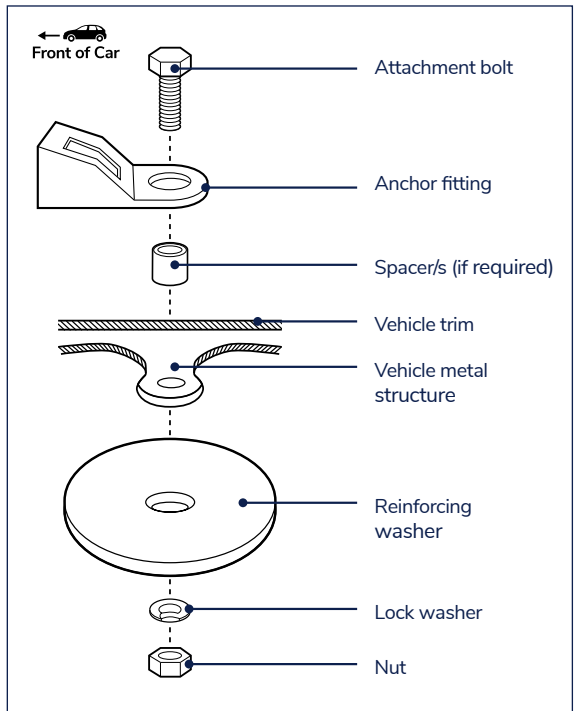


Figure 3

WARNING: CHILD RESTRAINTS MUST NOT BE ATTACHED TO UNSOUND METAL OR TO WOOD OR SYNTHETIC STRUCTURES. WHEN DRILLING THE 9MM HOLE DO NOT DRILL THROUGH FUEL LINES, FUEL TANKS, ELECTRICAL WIRING, OR RADIO SPEAKERS. WEBBING STRAPS MUST BE PROTECTED FROM SHARP CORNERS AND EDGES.

THE ANCHOR FITTING MUST BE USED ONLY AS DESCRIBED ABOVE. IT MUST NOT BE HOOKED ONTO ANY OTHER OBJECT.

Accessories

An extension strap may be needed for vehicles without a fixed parcel shelf. Extension straps and extra fittings are available from various stores.

Use of aftermarket accessories (i.e. items not provided in the box with the child restraint), can reduce the safety provided by the child restraint and may cause injury or death.

If an aftermarket accessory is to be used then the manufacturer may advise that it is compliant with AS/ NZS 8005 and is stated as suitable for this child restraint.



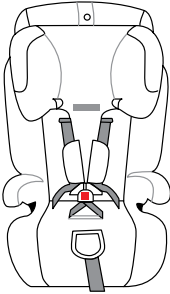
Dorel Extension Straps - 300mm & 600mm



Dorel Locking clip

Dorel Extension Straps - 300mm
Dorel Extension Straps - 600mm
Dorel Locking clip

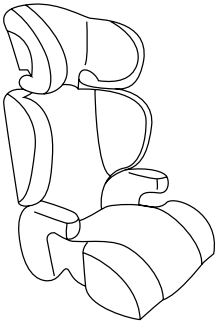
The Next Seat for your Child



OPTION 1

HARNESSED FORWARD-FACING CAR SEAT

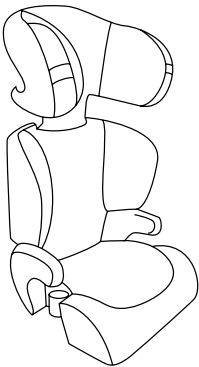
To be used only in a forward-facing position by a child whose shoulders are above the lower shoulder height marker (approximately 6 months of age) until the child's shoulders reach the upper shoulder height marker (approximately 8 years of age).



OPTION 2

BOOSTER SEAT

To be used with a lap-sash seatbelt by a child whose shoulders are above the lower shoulder height marker (approximately 4 years of age) until the child's shoulders reach the upper shoulder height marker (approximately 6 to 8 years of age). Can also be used with child harness that is approved for use with this booster seat.



OPTION 3

LARGER BOOSTER SEAT

To be used with a lap-sash seatbelt by a child whose shoulders are above the lower shoulder height marker (approximately 4 years of age) until the child's shoulders reach the upper shoulder height marker (approximately 8 to 10 years of age). Can also be used with child harness that is approved for use with this booster seat.

Additional Information

Guarantee

Dorel Australia Pty Ltd warrants your new product to be free from defects in materials and workmanship for 10 years on the seat & 3 years on the trim, from the date of purchase, provided that the product is used in accordance with accompanying recommendations or instructions where provided. The benefit of this warranty is in addition to your rights under the Australian consumer law and to other rights and remedies of the consumer under a law in relation to the goods or services to which the warranty relates.

Dorel Australia Pty Ltd will provide you with your choice of a refund, repair or exchange (where possible) for this product if it becomes defective within the warranty period. Dorel Australia Pty Ltd will bear the reasonable expense of claiming the warranty. This warranty will no longer apply where the defect is a result of alteration, accident, misuse, abuse or neglect.

Please retain your receipt as proof of purchase or register your product with us within 3 months from point of purchase via our website www.maxi-cosi.com.au. If you are having difficulties with your product contact our Customer Service Team on ph: 1300 809 526 or alternatively, via our website at www.dorel.com.au. Warranty claims and claims for expense incurred in returning this product can be addressed to our **Customer Service Team at 655-685 Somerville Road, West Sunshine, Vic, 3020.** Hours: 8:30 am to 5:00 pm, Monday to Friday.

For New Zealand please contact **Customer Service Centre, 14 Sir William Avenue, East Tamaki, Auckland, 2013.** Auckland: **(09) 274 1040** NZ wide: **0800 628 000** (toll free). Hours: 8:00am - 4:00pm, Monday to Friday.

Our goods come with guarantees that cannot be excluded under the Australian consumer law. You are entitled to a replacement or refund for a major failure and compensation for any other reasonably foreseeable loss or damage. You are also entitled to have the goods repaired or replaced if the goods fail to be of acceptable quality and the failure does not amount to a major failure.



Don't forget to register your product within 3 months of purchase for the Lifetime Warranty offer.*

Please visit to register now.

www.maxi-cosi.com.au

© 2022 Dorel Australia, Pty Ltd. All Rights Reserved.
RMT-A-13-A4B-AGL | RMT-B-13-A4B-A | RMT-C-13-A4B-AG 05/2023

*Terms and conditions apply.
Please visit our website to find out more.

