

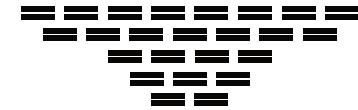
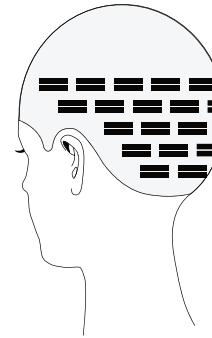
# TAPE IN EXTENSIONS PLACEMENT

Extensions should be placed approximately 1/4" apart.

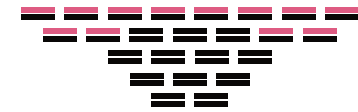
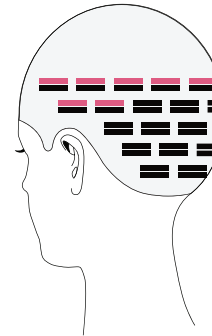
## Average number of extensions per row:

<b>Row 1</b>	1-2 Tabs	Placed Right to Left
<b>Row 2</b>	2-3 Tabs	Placed Left to Right
<b>Row 3</b>	3-4 Tabs	Placed Right to Left
<b>Row 4</b>	4-7 Tabs	Placed From Sides In
<b>Row 5</b>	5-8 Tabs	Placed From Sides in

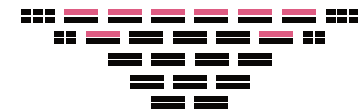
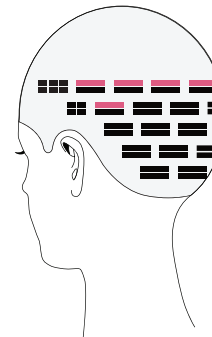
- Begin Row 1, on the right side of the head. Measure 3/4" from your client's hairline; your first extension will start here.
- Work your way up the head, row by row, until you reach the row above the ear. This would typically be your 3rd or 4th row.
- Row 4 should begin 1" above the ears. This will ensure the extensions lay flat above the ears and allow space for eyeglasses. Apply the extensions on the left and right side before working inward to complete the row.
- Repeat this step to complete Row 5.
- Consider Ultimates & Micro Strands in your application of Rows 4 & 5 to create a flawless blend and to allow for versatility in styling.



*Originals*



*Originals & Ultimates*



*Originals, Ultimates & Micro Strands*