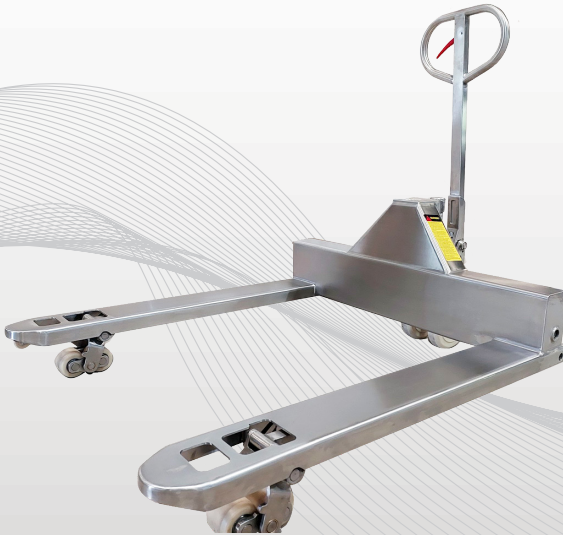




SUPERLIFT
SANITARY LIFTS

HAND PALLET TRUCK MANUAL



WARNING

Do not use the Hand Pallet Truck before reading and understanding this operating instructions

SAFETY PROCEDURES

- 01. Do not operate this truck unless you have been trained and authorized to do so.*
 - 02. Do not operate this truck until you have read and understood all of the safety information and instructions contained herein and on the truck.*
 - 03. Do not operate this truck until you have checked its condition. Give special attention to wheels, controls and lifting systems, including steering mechanism, guards and safety devices.*
 - 04. Report the need for truck repairs to your supervisor immediately and do not operate truck until repairs are made. Neglect may cause a minor repair to become a major service problem and cause the truck to become unsafe.*
 - 05. Do not load truck beyond capacity shown on serial name plate on truck.*
 - 06. Do not lift with the fork tips or one fork only.*
 - 07. This equipment is designed for evenly centered loads with forks completely supporting the load. Off-centering of loads can result in a dangerous operating condition and may cause damage or injury.*
 - 08. Always look in direction of travel. Use caution when visibility is obstructed by load.*
 - 09. Extreme caution must be used when handling loosely stacked/packaged loads.*
 - 10. Watch swing clearance when turning near walls, racks, pillars or other obstacles.*
 - 11. Start, stop, change direction and travel smoothly. Slow down for turns and on uneven or slippery surfaces that cause truck to slide or tip. Be aware that the truck behaves differently without a load than with a load.*
 - 12. Observe applicable traffic regulations. Yield right of way to pedestrians.*
 - 13. Do not ride on this equipment.*
 - 14. Do not carry passengers or lift personnel.*
 - 15. Before you leave the truck, fully lower lifting mechanism.*
-

EXCLUSION OF LIABILITY

The manufacturer assumes no liability for damage or injury to persons or property which has occurred as a result of defects or faults in the hand pallet trucks delivered or due to incorrect use. The manufacturer also assumes no liability for lost profits, operating down times, or similar indirect losses which the buyer has incurred. Damage to third parties, irrespective of its nature, is not subject to compensation






The operating instructions are not subject to notification of amendment. The descriptions and illustrations included in our operating instructions and replacement parts list are not binding. In the interests of further development, we reserve the right to make any changes at any time to the modules, components and accessories which we deem to be expedient, or for technical reasons, while retaining the essential features of the models described here.

ATTENTION

- 1. The waste packages should be sorted and put into solid dustbins according to the materials and be collected and dispose by local special environment protection bureau. To avoid pollution, it's forbidden to throw away the wastes randomly.**
 - 2. To avoid leaking during the use of the product, the user should prepare some absorbable materials (scraps of wooden or dry duster cloth) to absorb the leaking oil in time. To avoid second pollution to the environment, the used absorbable materials should be handed in to special departments in terms of local authorities.**
-

WARRANTY

Warranty claims shall be voided in case.

-  Our conditions in the operation manual are ignored.
-  The equipment is used outside the described uses.
-  The equipment is modified or opened.
-  Mechanical damage and damage caused by media, liquids.
-  Natural wear and tear.

The guarantee includes material and assembly defects on parts which prove to be incorrect or inadequate for normal use when tested by the manufacturer and which are returned to manufacturer free of charge within the guaranteed period of 12 months.

Thank you very much for choosing a QUALITY product. For future reference, please complete the owner's record below.

Serial No. : _____ Purchase Date : _____

Save the receipt, warranty and these instructions. It is important that you read the entire manual to become familiar with this product before you begin using it.

PT - 25

Version 2.2 10/2022

Operating Instructions HAND PALLET TRUCK

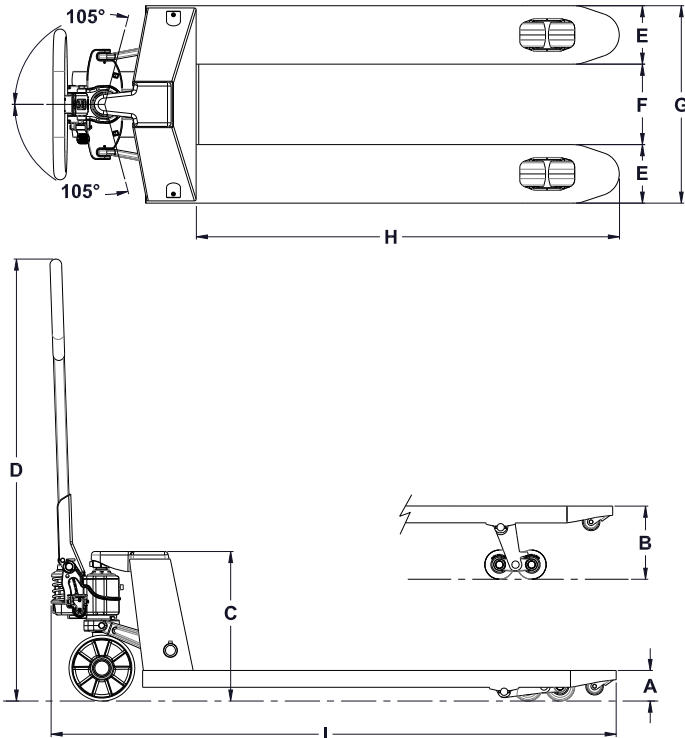
Table of Contents

01. TECHNICAL DATA	04
02. CHECK SHIPMENT	05
03. LOADING SPECIFICATION	05
04. MAXIMUM INCLINES	05
05. SAFETY WITH LOADS	05
06. ASSEMBLY INSTRUCTION	06
07. BEFORE USE	06
08. OPERATION	07
09. TO LIFT LOADS	07
10. TO MOVE LOADS	07
11. TO LOWER LOADS	07
12. LUBRICATION	07
13. REGULAR MAINTENANCE	07
14. TROUBLE SHOOTING	08
15. DEAERATION OF HYDRAULIC SYSTEM	08
16. WARNING	09
17. MAINTENANCE AND UPKEEP	09
18. OPERATING INSTRUCTION	10
19. PUMP HANDLE PARTS LIST	11
20. FORK FRAME PARTS	12
21. FORK FRAME PARTS LIST	13
22. PUMP PARTS	14
23. PUMP PARTS LIST	15

01. TECHNICAL DATA.

ITEM	Ref.	UNIT	SS-2500
Capacity	–	Kgs	2500
Min. Fork Height	A	mm	85
Max. Fork Height	B	mm	200
Min. Truck Height	C	mm	410
Handle Height	D	mm	1210
Fork Width	E	mm	160
Admit Between Forks	F	mm	220/230/365
Fork Overall Width	G	mm	540/550/685
Fork Length	H	mm	900/1150/1220
Overall Length	I	mm	1300/1550/1620
Wheels	–	mm	ø180x50
Fork Rollers	–	mm	ø80x70

DIMENSIONS:



02. CHECK SHIPMENT BEFORE ASSEMBLY OR USE

The hand pallet truck is to be carefully checked at the manufacturer's plant before shipment. In order to ensure that no damage has occurred during transport, the hand pallet truck should be checked upon receipt for transport damage and to ensure correct operation. Damage due to transport is to be listed on the signed copy on the freight document. The freight forwarder must be notified of any damage within 48 hours. Damaged hand pallet trucks must not be put into use.

03. LOADING SPECIFICATION

The hand pallet truck is designed for the horizontal transportation of loads on a level, fixed base. The load must be evenly distributed on pallets or similar receptacles. The ideal loading mode is that the gravity center of heavy goods is at the central position of the fork. The maximum load-carrying capacity is shown on the appropriate designation plate and on the load sticker on the hand pallet truck. When there exists defective load, the rated carrying capacity shall be reduced. If the load on the forks is one sided, there is a risk of the forks bending or the load slipping off. Supporting or shifting the load with the fork tips is to be avoided in all cases as this results in damage to the appliance. In order to preserve the wheels and chassis the hand pallet truck must not be driven over very uneven ground.

04. MAXIMUM INCLINES OR DECLINE GRADES

The hand pallet truck is equipped with a permanently set pressure-limiting valve which permit a maximum load of 5 % of the nominal load. The screw plug on the pressure control valve is secured so as to avoid inappropriate manipulation from the operating personnel. In order to avoid damage to the goods being transported and the means of transport, the load must be supported evenly. If the load is unevenly distributed the pressure limiting valve will not function. When driving on down-grades the load is to be secured to prevent it from slipping or sliding off the hand pallet truck, (e.g. additional operating personnel). In addition to this, only hand pallet trucks with a service and parking brake are to be used on down-grades up to approx 6 %.

Journeys on inclines or down-grades of more than 6 % are always to be avoided. Safe transport cannot be guaranteed when the center of gravity of the load has altered.

05. SAFETY WITH TALL LOADS

Transporting with tall loads, (e.g. machines) changes the center of gravity of the load so unfavourably that the complete hand pallet truck including the load, goes out of control and may overturn on a curve. Loading, (e.g. onto a truck or mobile loading ramps) should be regarded in particular as likely occasions for accidents. During such activities the hand pallet truck is to be secured with particular care.

Conveying persons or using the hand pallet truck as a form of roller skate is not permissible. Foodstuffs are only to be transported in packed form. Direct contact with the hand pallet truck is to be avoided.

The accident prevention regulations for industrial trucks and the safety regulations and accident prevention regulations applicable to the user are also to be complied with.

06. ASSEMBLY INSTRUCTIONS.

Individual trucks are assembled and ready to use. Pallet trucks purchased in crate quantities (6 units to a crate) require some assembly. Tools Needed for Assembly are Hammer, Spanner and Allen Keys.

Place the Handle near Pump for fitting.
Push the Handle Rod through Pump body and Handle. Lock the Rod with Spring Pin.



Fig.1

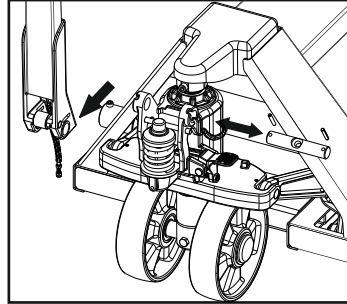
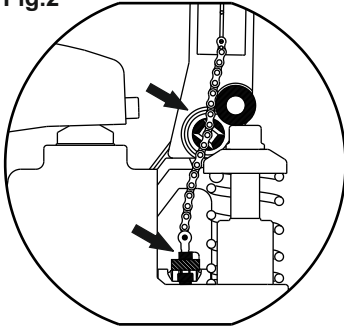


Fig.2

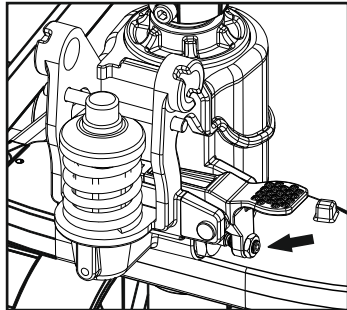


Pass the Link chain through hole of Handle Rod. Then pass the Link chain Eye-Bolt through Release bracket and tighten the top nut of the link chain.

Adjust screw for Pumping and Neutral setting. After adjustments lock outer hexagonal nut.



Fig.3

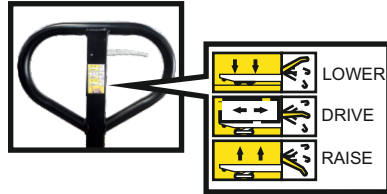


07. BEFORE USE.

1. After finishing the assembly of the pallet truck, try to shake it and operate the unit in different positions using the hand lever, to see whether the lifting, neutral position and lowering the pallet truck operates properly.
2. The outer hexagonal nut (**Fig. 3**) at release location (**P.No. 323**) is used for locking, and must be loosened before any adjustment and must be tightened after adjustment. If the pallet truck is raised and the pallet truck immediately descends, turn screw bolt (**P.No. 324**) anti-clockwise a little at a time and test the pallet truck until normal lifting has occurred. If the pallet truck cannot be lowered after lifting, turn screw bolt (**P.No.324**) clockwise a little at a time and test the pallet truck until normal lowering has occurred. After adjustments lock outer hexagonal nut (**P.No. 323**) at release location back into place.

08. OPERATION.

To raise the forks, push lever down and pump the handle to the desired height. To lower forks, pull lever up. The lever is spring loaded and will move to the neutral position. To freely move the handle, set the lever in the center neutral position.



09. TO LIFT A LOAD.

1. Lower forks to lowest position.
2. Insert forks under load or into pallet.
3. Push the lever down.
4. Move handle up and down until forks reach desired height.

10. TO MOVE A LOAD.

1. Place lever in center neutral position.
2. Pull or push to desired location.

11. TO LOWER A LOAD.

1. Pull lever up.
2. Pull forks away from load.

12. LUBRICATION.

Check the oil level annually by removing **(P.No.327)** screw. When changing or adding oil, fill the tank through **(P.No.327)** screw hole. to 80% capacity with hydraulic oil **(Hydrol 32 Grade Oil)**. There are some points located on the truck. Grease these points on a semi annual basis. Lightly oil all moving parts periodically.

13. REGULAR MAINTENANCE.

1. Only qualified and trained personnel are allowed to do service on this truck.
2. Before servicing the truck, remove the load and lower the forks to the lowest position.
3. Completely immobilize pallet truck before working on components that might pinch fingers or hands if movement were allowed.
4. Use approved and from your dealer released original spare parts.
5. Please consider that oil leakage of hydraulic fluid can cause failures and accidents.
6. It is allowed to adjust the pressure valve only from from trained technicians.
7. All bushings and bearings have been lubricated at the factory. to increase their life, regular maintenance is recommended. Using the appropriate grease for the application and lubricate each grease fitting every 6 months.
8. Harsh environments may require more frequent maintenance.
9. If there is need to change the wheels, Buy form the manufacturers suitable spares.

14. TROUBLE SHOOTING

No.	FAULTS	CAUSES	SOLUTION
1.	The forks can't be lifted to the maximum height.	✘ Hydraulic oil is not enough.	✘ Add recommend working oil.
2.	The forks can't return to the lowest position	✘ Too much hydraulic oil	✘ Take out appropriate working oil
		✘ Rotation parts are out of shape.	✘ Replace the parts.
3.	Pallet Truck does not lower after lifting	✘ The Piston Rod or Pump Body is deformed resulting from partial loading, slanting to one side or over-loading.	✘ Replace the piston rod or pump body.
		✘ The forks were kept in the high position for long time with piston rod bared to arise in rusting and jamming of the rod.	✘ Keep the fork in the lowest position if not using, and pay more attention to lubricate the rod.
		✘ The adjusting nut or screw is not in the correct position.	✘ Adjust the nut or screw.
4.	Pallet Truck does not lift.	✘ The impurities in the oil causes the valve unable to close.	✘ Clear up impurity and replace with new working oil.
		✘ No oil or air in hydraulic system.	✘ Fill oil or ventilate air by pumping in release position.
		✘ The adjusting nut or screw is not in the correct position.	✘ Adjust the nut or screw.
5.	Hydraulic oil leakage.	✘ Seals are damaged.	✘ Replace the seals.
		✘ There is a breakage or abrasion on the surface of hydraulic parts.	✘ Replace the parts.
		✘ Pump parts are loose.	✘ Fasten the loosened parts.
6.	Pallet Truck lifts but goes down after each pumping.	✘ The valve cartridge of pump is got blocked or cartridge seals damage.	✘ Open valve cartridge of pump and clean valve or replace the cartridge seals.



NOTE: DO NOT ATTEMPT TO REPAIR THE PALLET TRUCK UNLESS YOU ARE TRAINED AND AUTHORIZED TO DO SO.

15. DEAERATION OF THE HYDRAULIC SYSTEM.

Air may find its way into the pump during transportation, tilting or usage on uneven ground. It can result in not elevating forks whilst pumping in the Raise position. The air can be removed in the following way, Move the control handle to the Lower position, then move the tiller down several times. Thereafter normal operation can be resumed.

16. WARNING.

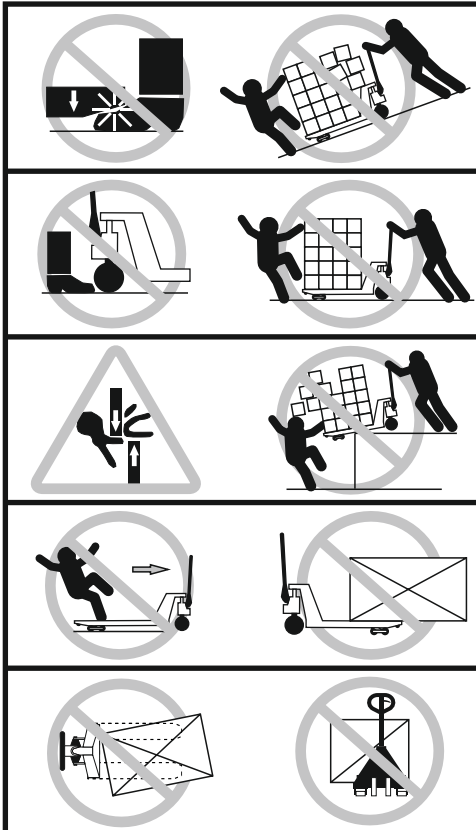
01. Please read the operation instruction carefully before you operate the hand pallet truck and learn about all the features of this types of hand pallet trucks.
02. If you want to let the trucks down by controlling the hand knob, you should better lift the hand knob a little at first ,and then let the truck down slowly. It is forbidden to pull the handle knob with great force because rapid dropping could cause some damages to both the hand pallet and cargo.
03. Don't rock the hand grip at a high speed and in a high frequency.
04. Don't load the cargo at a high speed.
05. Do not overload the forks .overloading could keep the hand pallet trucks from working normally.
06. The gravity centre of cargo should be in the middle of truck forks .The offset of cargo could make hand pallet truck out of balance.
07. Don't load loose or unstable goods.
08. Don't put the goods on the trucks forks for long time.
09. It is forbidden to load people and let them stand on the forks to slide . Don't puts any parts of body below the cargo.
10. Do not operate the unnamed position.
11. The truck shall be used ,serviced and repaired according to the manufacturer's requirements and shall not be modified or have attachments fitted without ensuring that truck is still safe.
12. Do not use the hand pallet truck at an insufficient illuminated place!
13. Do not park the hand pallet truck by turning the hand grip to the right!
14. Do not use the hand pallet truck as bumper jack!
15. The extremity of fork arms shall not be used as a lever to lift load!
16. It is forbidden to use the truck at places where a risk of unintentional movements exists.
17. It is forbidden to contact the truck with goods or cargo directly!
18. Do not use the hand pallet trucks in potentially explosive atmosphere!
19. During the operation of the hand pallet truck ,the operator should pay more attentions to the feet and any body part so as to avoid the risk of being crushed.
20. The trucks shall be used, serviced and repaired according to the manufacturer's requirements.

17. MAINTENANCE AND UPKEEP.

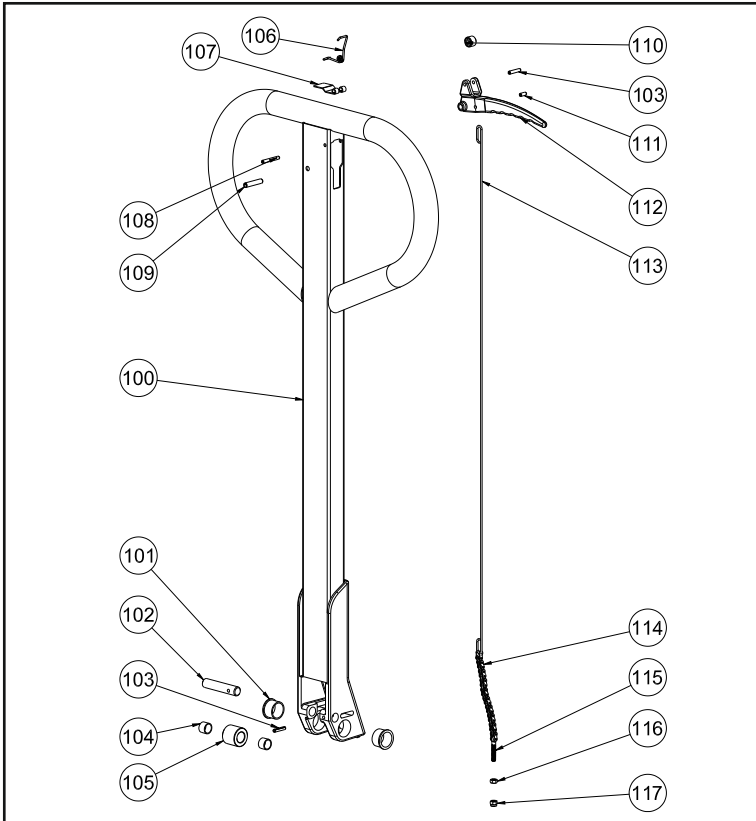
The routine check should be carried out daily and every abnormal phenomenon should be dealt with immediately. Please do not use faulty truck in order to prolong the service life .If there are any faults, please consult the professional. If it is necessary to replace the parts, the new parts should be provided by the original manufacturer. All the rotary joints should renew the motor oil every three months. Especially pay more attention to the place between wheel and axis. Make sure that there is not any yarn or other rags in order to keep all wheels running with handiness .After the maintenance and upkeep, please record in the list below.

Date	Faults	Parts Replaced	Sign

18. OPERATING INSTRUCTION.

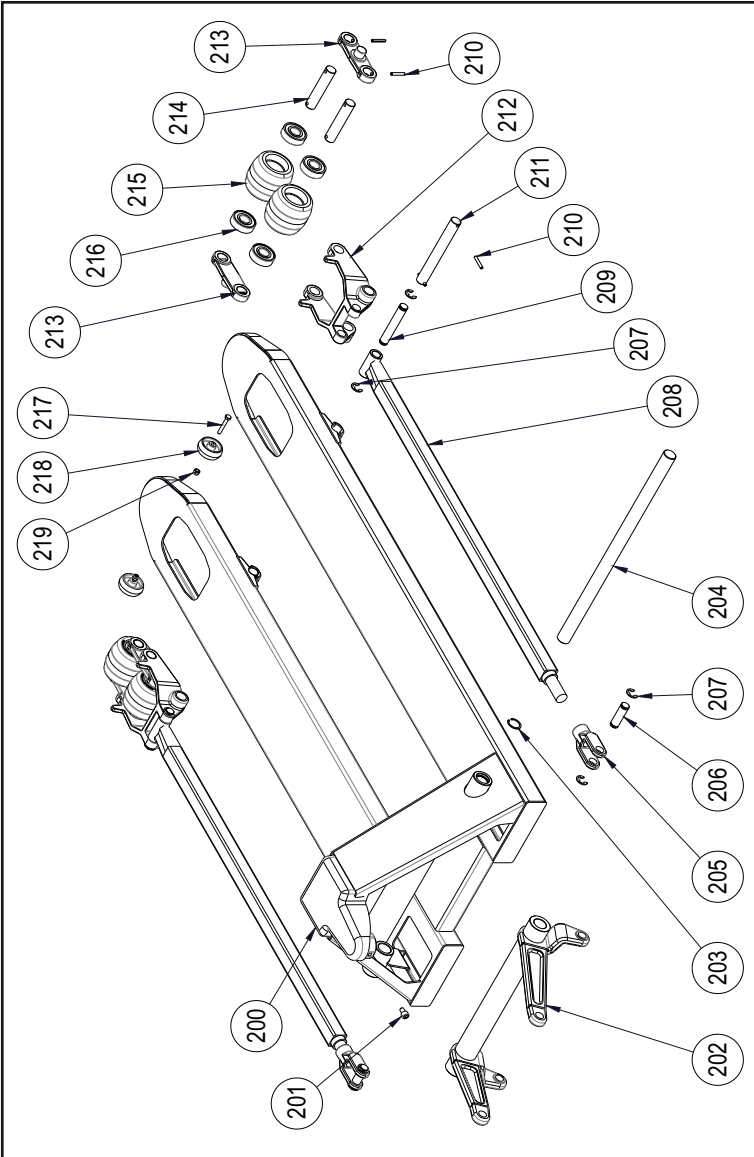


19. BF PUMP HANDLE PARTS LIST.



<i>P.No.</i>	<i>Description</i>	<i>Qty.</i>	<i>P.No.</i>	<i>Description</i>	<i>Qty.</i>
100	Handle	1	110	Roller	1
101	Flange Bush	2	111	Elastic Pin	1
102	Roller Pin	1	112	Control Lever	1
103	Elastic Pin	2	113	Link Rod	1
104	Bushing	2	114	Chain	1
105	Pressure Roller	1	115	Adjusting Bolt	1
106	Spring	1	116	Lock Nut	1
107	Blade Spring	1	117	Adjusting Nut	1
108	Elastic Pin	1			
109	Elastic Pin	1			

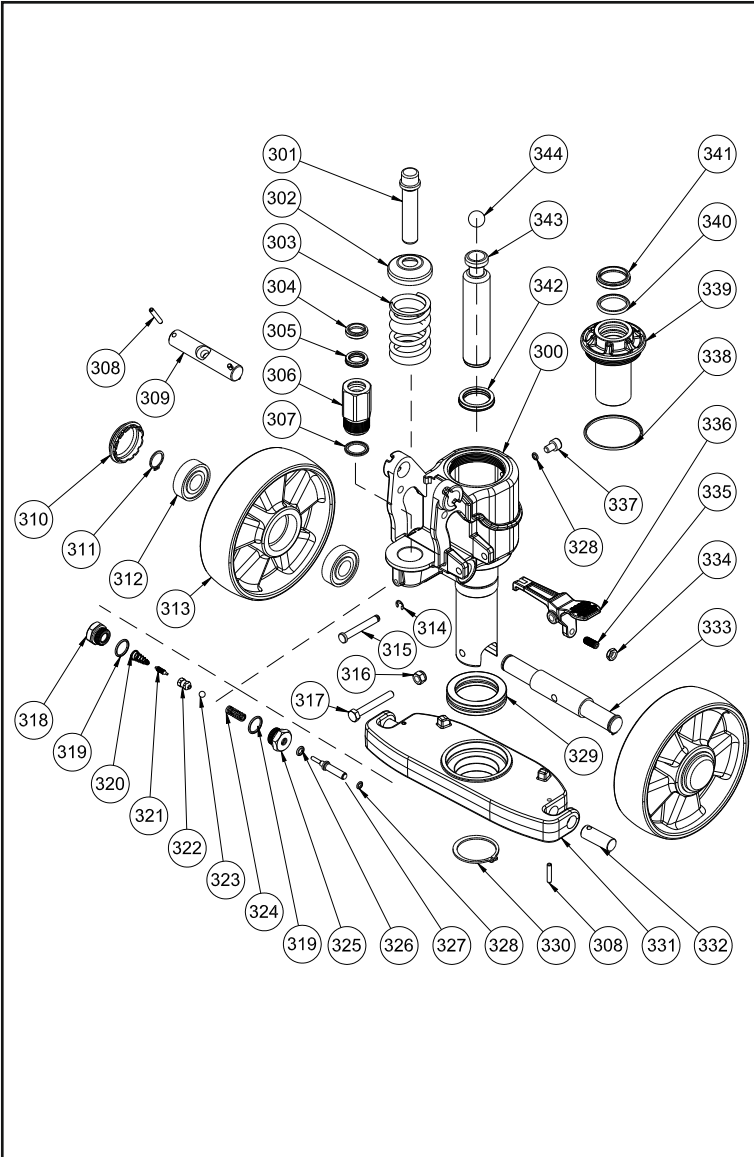
20. FORK FRAME PARTS.



21. FORK FRAME PARTS LIST.

P. No.	Description	Qty.	Remark
200	Fork Frame	1	
201	Bolt	1	
202	Rocker Arm	1	
203	Circlip	2	
204	Frame Shaft	1	
205	Tie Joint	2	
206	Pin	2	
207	Retaining Ring	8	
208	Tie Rod	2	
209	Pin	2	
210	Elastic Pin	12	
211	Shaft	2	
212	Roller Bracket	2	
213	Tandem Mounting	4	
214	Roller Shaft	4	
215	Load Roller	4	
216	Bearing	8	
217	Bolt	2	
218	Entry Roller	2	
219	Nut	2	

22. BF PUMP PARTS.



23. PUMP PARTS LIST.

P. No.	Description	Qty.	Remark
300	Pump Body	1	
301	Pump Piston	1	
302	Spring Cap	1	
303	Spring	1	
304	Dust Ring	1	
305	Seal	1	
306	Pump Cylinder	1	
307	Sealing	1	
308	Elastic Pin	4	
309	Handle Axel	1	
310	Bearing Cover	2	
311	Retaining Ring	2	
312	Bearing	4	
313	Wheel	2	
314	Retaining Ring	2	
315	Pin	1	
316	Nut	1	
317	Bolt	1	
318	Valve Plug	1	
319	O Ring	2	
320	Spring	1	
321	Valve Insert	1	
322	Valve Body	1	
323	Steel Ball	1	
324	Spring	1	
325	Guide Nut	1	
326	O Ring	1	
327	Release Spool	1	
328	O Ring	2	
329	Bearing	1	
330	Retaining Ring	1	
331	Traverse	1	
332	Traverse Pin	2	
333	Wheel Axel	1	
334	Nut	1	
335	Screw	1	
336	Release Lever	1	
337	Bolt	1	
338	O Ring	1	
339	Pump Nut	1	
340	O Ring	1	
341	Dust Ring	1	
342	Seal	1	
343	Piston Rod	1	
344	Steel Ball	1	

