



SUPERLIFT
SANITARY LIFTS

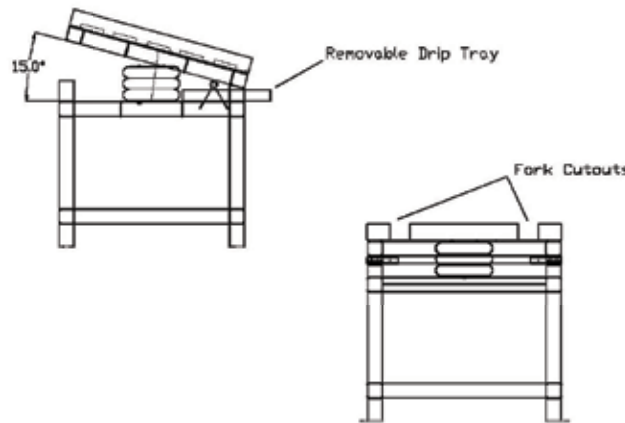
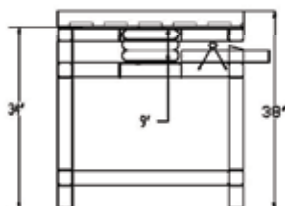
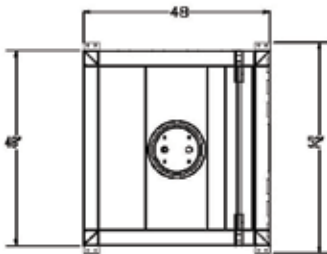
TILTERS

Stainless Steel Pneumatic Tilter

- 100% Stainless steel frame
- Available in 304L and 316L stainless steel
- Capacities 500 to 5,000 lbs
- Finishes 2B, electro polished and 35 RA
- Clean room compliant
- For Food, pharmaceutical, and other washdown applications
- Floor mounted or stand mounted
- cGMP Models available
- Custom designs
- UL and CE approved
- Air bag powered



Drawings



Options

- cGMP
- EE and EX rated trucks available
- Epoxy coatings, galvanized, nickel plated and linexcoatings available
- Rider platforms
- Horizontal travel models
- Straddle trucks, counterbalance fork over and walkie reach trucks are all available