



SUPERLIFT
SANITARY LIFTS

GOLIATH SERIES

GOLIATH™

POWERED DRIVE CONTRACTOR LOAD LIFTER

6,000 lbs capacity

Introducing our latest innovation in heavy lifting technology - the **portable heavy-duty 6,000 lbs and load lifter!** With its impressive capacity and ability to lift pipes and another equipment to 144" high, this lifter is the perfect solution for your toughest lifting jobs.

Its compact size and lightweight design make it easy to transport to your job site, and quick to get where you need it.

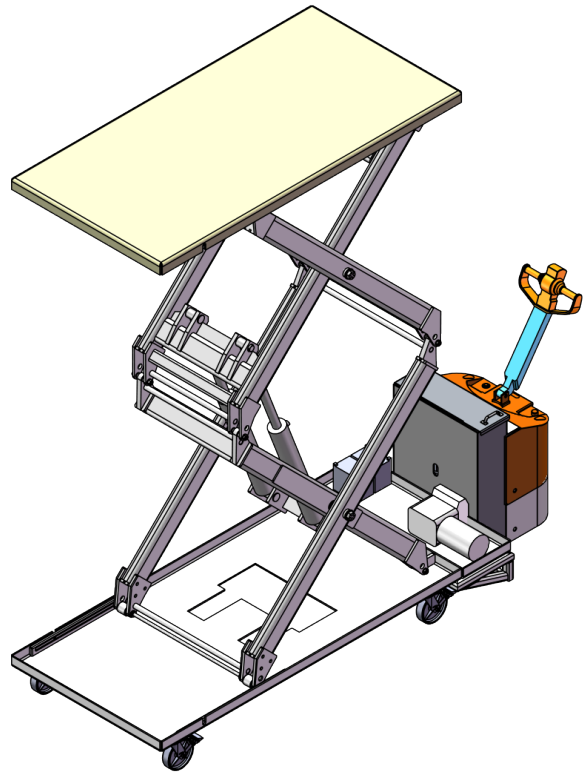
Built with strength and durability in mind, our pipe lifter is designed to handle even the heaviest loads with ease. Its sturdy construction ensures that it can withstand the rigors of any worksite, while its easy-to-use design makes it simple to operate.

Whether you're working in the construction industry, oil and gas sector, or any other field that requires heavy-duty lifting, our 6,000 lbs. load lifter is the tool you need. So don't settle for anything less - choose our load lifter and experience the power and reliability of the best in the business!

Push around units also available for

Features

- Lowered Height 24.25", Raised Height 144"
- Platform 48" wide X 96" long
- Brakes electric
- Control and battery conservation
- Powered Steering
- Lift Lugs





SUPERLIFT
SANITARY LIFTS

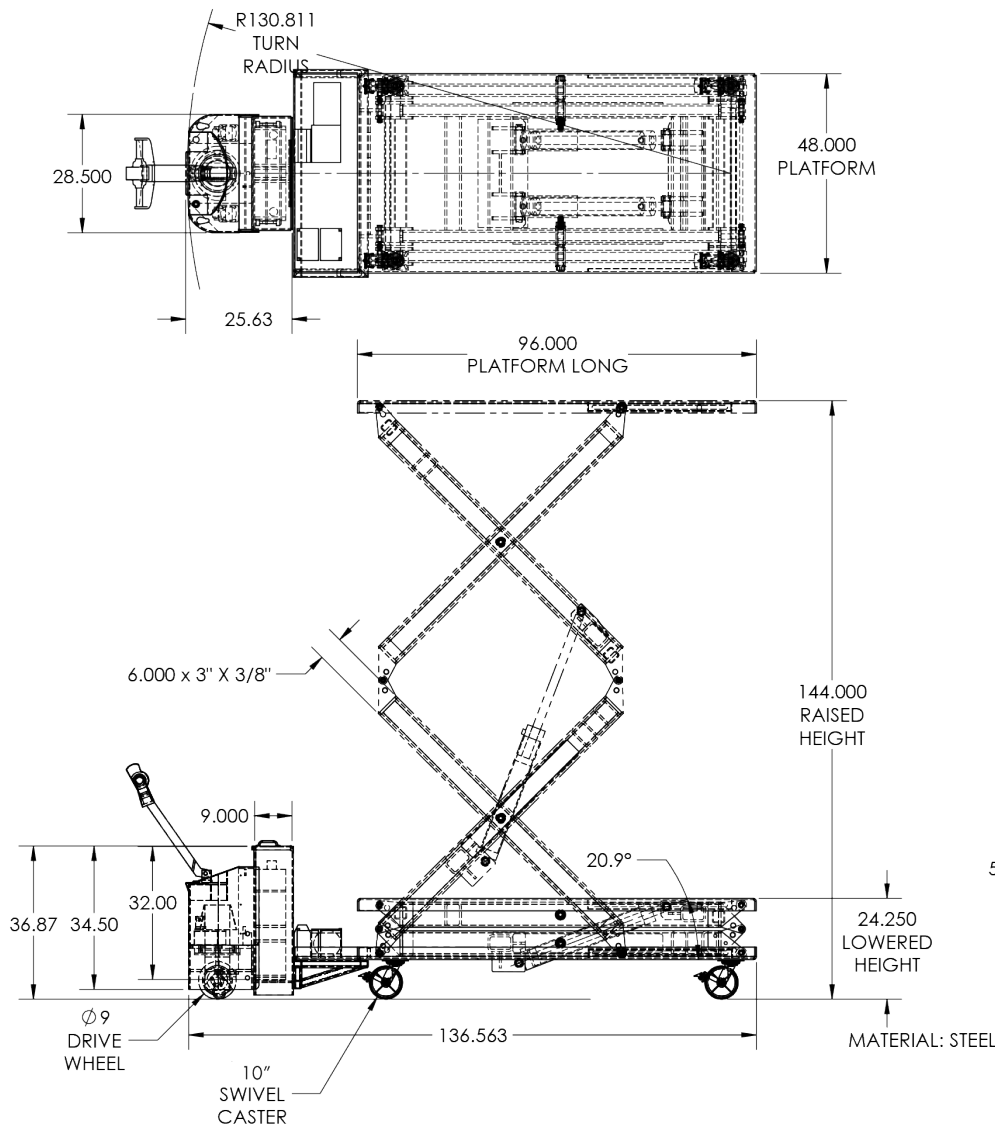
GOLIATH SERIES

GOLIATH™

**POWERED DRIVE CONTRACTOR
LOAD LIFTER**

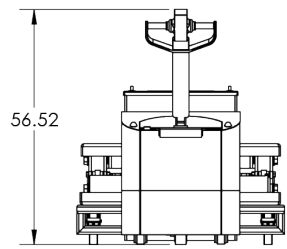
6,000 lbs capacity

Sample size drawings



Options

- 180" Lift Height
- Custom Sizes



CALL 1-800-884-1891 FOR CUSTOM SIZES