



SUPERLIFT
SANITARY LIFTS

TRUCKS

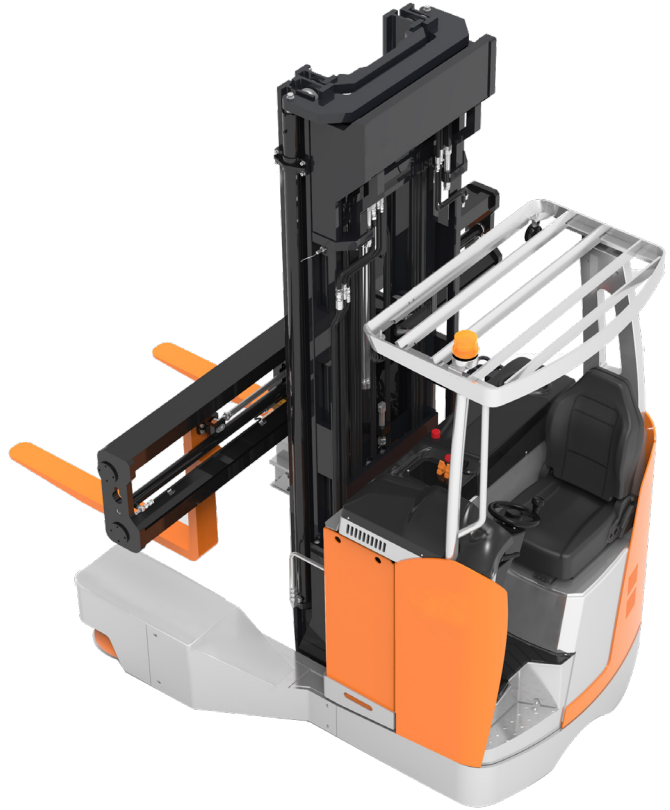
Electric Reach Truck

The Electric Multi-directional Reach Truck is suitable for stacking in narrow aisle and carrying long materials. The lifting height can be chosen from 8' to 34 ½'.

The Electric Multi-directional Reach Truck can not only completely replace regular forklifts but also drive in multiple directions. This truck is a great choice for the goods between 118" to 33' of length such as metal profiles, plates, glass plates, pipes, etc.

Features

- 48V full AC system, rapid response, accurate steering angle control, high electrical integration, low energy consumption
- Made in America spool, precise hydraulic control meets the requirements of AGC application
- Electrical modular control technology, CAN bus communication, easier for AGV modification
- Load wheel equipped with the five-stage steering deceleration. Small control current, precise and controllable steering angle, effectively extend the service life of the steering motor
- Real-time-full-wheels display, easy to operate the precise direction in narrow aisle, safe and reasonable high recognition
- Double clutch driving brake and parking brake make the deceleration brake more stable and more secure
- Man-machine engineering simulation design, comfortable operation and excellent driving experience



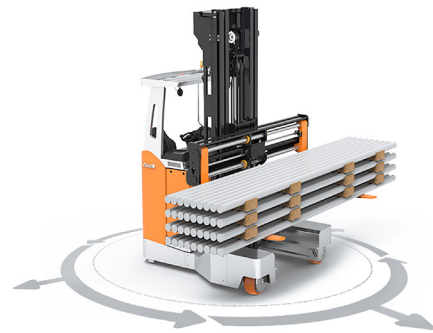
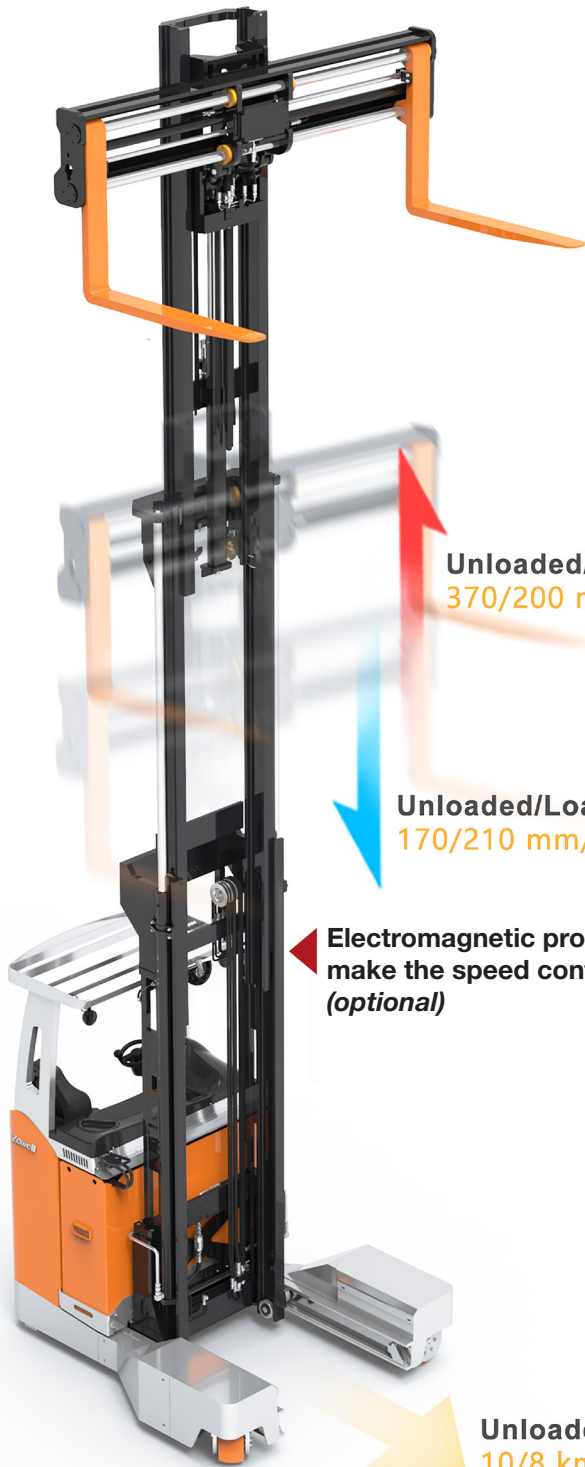


SUPERLIFT
SANITARY LIFTS

TRUCKS

Electric Reach Truck

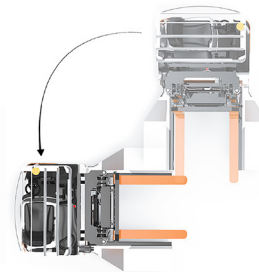
Multi-directional model



360° Rotary



Parallel Moving



All Wheels Turning



Oblique Moving

Unloaded/Load
10/8 km/h



SUPERLIFT

SANITARY LIFTS

Model		RSEW225	RSEW225	RSEW13	RSEW130S
Power type		Electric			
Driving position		Transverse seat			
Load capacity at load centre	Q (lbs)	5,511	5,511	6,613	6,613
Load center	C (in)	23	23	23	23
Wheel base	Y (in)	66.9	66.9	66.9	66.9
Tuck weight (Battery included)	Lbs	9,590	9,700	9,920	10,141
Tires Front/rear					
Front load wheels (Diam x Width) single wheel	in	Φ11.8 x 5.3	Φ11.8 x 5.3	Φ11.8 x 5.3	Φ11.8 x 5.3
Rear driving wheel (Diam x Width) single wheel	in	Φ13.5 x 5.5	Φ13.5 x 5.5	Φ13.5 x 5.5	Φ13.5 x 5.5
Wheel qty drive wheel/load wheel	pcs	1X/2	1X/2	1X/2	1X/2
Lifting weight	in	118.1 x 177.1	177.1x314.9	118.1 x 177.1	177.1x393.7
Fork tilting front/rear	αβ(°)	2/4	2/4	2/4	2/4
Overhead guard height	h5 (in)	86.2	86.2	86.2	86.2
Min distance from the ground to the chassis		75	75	75	75
Min ground clearance	h8 (in)	1.3	1.3	1.3	1.3
Left and right support leg height	h10 (in)	17.9	17.9	17.9	17.9
Overall length (fork included)	l1 (in)	96.2	98.2	90.3	92.3
Overall length	b1 (in)	68	68	68	68
Fork size	l/e/s/(in)	42.1/3.9/1.7	42.1/3.9/1.7	36.2/4.9/1.7	36.2/4.9/1.7
Rear chassis width	b2 (in)	48.4	48.4	48.4	48.4
Fork width	b5 (in)	13.9 - 34.5	13.9 - 34.5	14.9 - 34.5	14.9 - 34.5
Min turning radius (go straight)	Wa (in)	76.8	76.8	76.8	76.8
Min radius of in situ rotation	(in)	50.3	51.3	48.2	52.5
Min right angle turning radius	(in)	88.6	88.6	88.6	88.6
Min aisle width when side moving Pallet 118.1x39.7x39.7 (in)	(in)	102.3	102.3	102.3	102.3
Driving speed loaded/unloaded	km/h				
Lifting speed loaded/unloaded	in/s	7.7/370	7.7/370	7.7/370	7.7/370
Lowering speed loaded/unloaded	in/s	8.2/170	8.2/170	8.2/170	8.2/170
Gradeability loaded/unloaded	%(tan)θ	8/10	8/10	7/10	7/10
Brake		Electric			
Parking brake		Electric			
Mode select		HMI Interface			
Driving wheel position display		HMI Interface			
Screen display		Wireless Camera			
Four forks and wide forks		Optional			
Fork positioner		Optional			
AGV modification		Optional			

1. The parameters listed in the above table are for standard models. For non-standard customization please contact us.
2. Right reserved for technical change and improvement