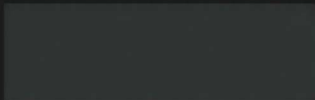


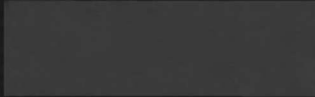


Colorize

your stove pipe, wood, pellet, or gas heating appliance with Stove Bright® high temperature paint 1200°F/650°C



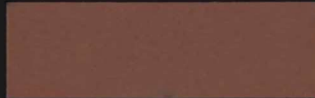
1990 SATIN BLACK



6146 LEATHER BROWN



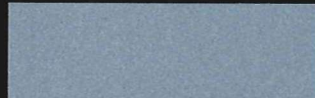
6159 METALLIC BROWN



6192 RUSSET



6193 METALLIC GRAY



6194 SKY BLUE



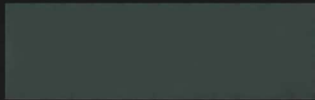
6195 MAHOGANY METALLIC



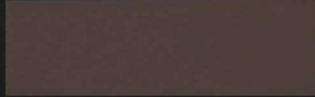
6196 METALLIC BLUE



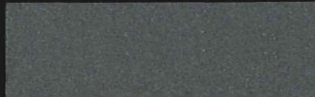
6197 MOSS GREEN METALLIC



6198 FOREST GREEN



6199 REDWOOD



6201 CHARCOAL



6223 EMERALD GREEN METALLIC



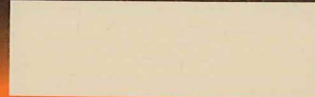
6224 ADOBE TAN



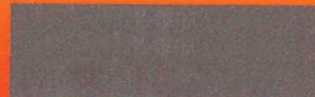
6230 GOLDENFIRE BROWN



6265 SILVER



6283 ALMOND



6298 RICH BROWN METALLIC



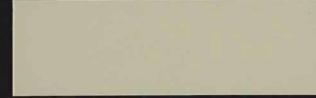
6302 METALLIC GOLD



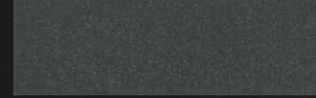
6304 FLAT BLACK



6306 HIGH HEAT PRIMER



6307 SAND



6309 METALLIC BLACK



6310 BARK BROWN



6311 HONEY GLO BROWN



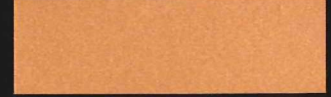
6313 MAUVE



6318 PATRIOT BLUE



6319 MOJAVE RED



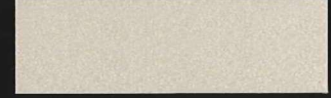
6320 COPPER



6321 PEWTER



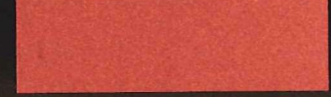
6324 SUNSET



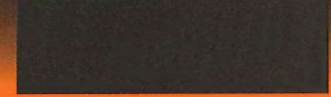
6325 SURF SAND



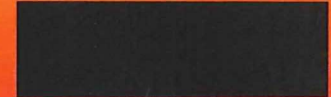
6327 GREEN ILLUSION



6329 SHIMMERING ROSE



6332 NEW BRONZE



VENT PIPE PAINT

Available to you is The Stove Bright® User Guide. The User Guide provides details about surface preparation, application, and your first burn.

Find the User Guide before you start your project at:

- www.stovebright.com
- 800-537-7201
- info@forrestpaint.com

Actual paint and color chips may vary slightly from this printed representation.

Visit our Stove Bright® "How to Videos" at: www.youtube.com/user/MrStoveBright