

Slimline Range



It's the attention to detail ...

The Slimline range offers the industry's longest linear burners that produce a stretched continuous flame for dramatic effect. All burners are designed for custom installations both indoor and outdoors.

Fine detail and quality finishes distinguish Slimline Burners. The unique mounting frame enables flush fitting into the surface. Elegant proportions and the brushed stainless steel accentuate the long continuous flame.

Complementing the Slimline Linear Burners are matching Fireboxes designed for inbuilt installations. Their shallow depth simplifies fitting into compact settings.

Black interiors enhance the flame's appearance. With a choice of brushed stainless steel or black fascias to finish off the setting.

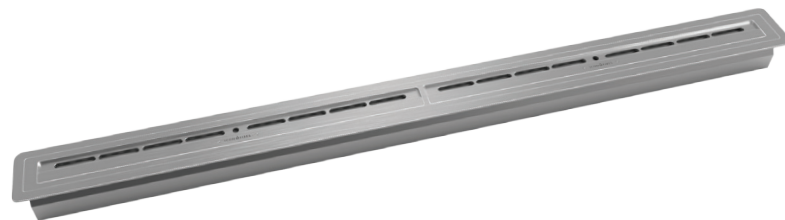
Simple installation opens up endless positioning possibilities for Icon Fires Slimline Range.

Slimline Range



SB500 Slimline Burner

Dimensions:
H100mm x L545mm x D145mm
Cut Out Size:
H110mm x L530mm x D130mm
Capacity: 2.75 Litres
Consumption: avg 0.3 lt/hr
Burning Time: Up to 8 hours
Performance: 2.7 kW/hr rating



SB800 Slimline Burner

Dimensions:
H100mm x L845mm x D145mm
Cut Out Size:
H110mm x L830mm x D130mm
Capacity: 4.5 Litres
Consumption: avg 0.6 lt/hr
Burning Time: Up to 8 hours
Performance: 5.4 kW/hr rating

SB1100 Slimline Burner

Dimensions:
H100mm x L1145mm x D170mm
Cut Out Size:
H110mm x L1130mm x D155mm
Capacity: 6.25 Litres
Consumption: avg 0.9lt/hr
Burning Time: Up to 9 hours
Performance: 7.7 kW/hr rating

SB1400 Slimline Burner

Dimensions:
H100mm x L1445mm x D170mm
Cut Out Size:
H110mm x L1430mm x D155mm
Capacity: 8.15 Litres
Consumption: avg 1.0 lt/hr
Burning Time: Up to 9 hours
Performance: 9.8 kW/hr rating

- High efficiency, clean-burning bioethanol burners.
- Flame and heat control.
- Slender dimensions allow for compact installations.
- Brushed finish, 304 Stainless steel construction.
- Suitable for custom settings and existing masonry fireplaces.
- Suits indoor and outdoor use.

Slimline Burner Image
SB1400 has dual sliding
plate, smaller models have
single sliding plate

SLIMFB1100

Slimline Firebox Complete with SB800 Burner

Dimensions:

H600mm x L1100mm x D340mm

Fascia Finishes: ■ □

Capacity: 4.5 Litres

Consumption: avg 0.6 lt/hr

Burning Time: Up to 8 hours

Performance: 5.4 kW/hr rating

SLIMFB1650

Slimline Firebox Complete with SB1400 Burner

Dimensions:

H600mm x L1650mm x D340mm

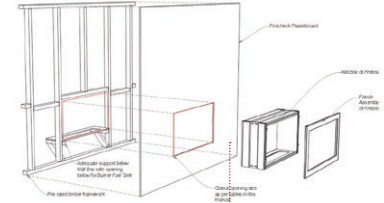
Fascia Finishes: ■ □

Capacity: 8.15 Litres

Consumption: avg 1.0 lt/hr

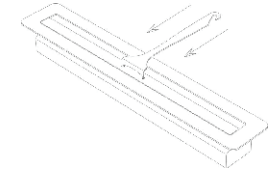
Burning Time: Up to 9 hours

Performance: 9.8 kW/hr rating



IMPORTANT

Insulation must be securely wrapped around the firebox body before placing inside opening



Flame height and heat control are a feature of all Icon Fires linear burners. Improving comfort and fuel efficiency.

SLIMFB1350

Slimline Firebox Complete with SB1100 Burner

Dimensions:

H600mm x L1350mm x D340mm

Fascia Finishes: ■ □

Capacity: 6.25 Litres

Consumption: avg 0.9lt/hr

Burning Time: Up to 9 hours

Performance: 7.7 kW/hr rating

SLIMFB2000FP

Slimline Firebox Complete with SB1400 Burner

Dimensions:

H600mm x L2000mm x D340mm

Fascia Finishes: ■ □

Capacity: 8.15 Litres

Consumption: avg 1,0 lt/hr

Burning Time: Up to 9 hours

Performance: 9.8 kW/hr rating

SLIMFB2000FP800

Slimline Firebox Complete with 2 x SB800 Burner

Dimensions:

H600mm x L2000mm x D340mm

Fascia Finishes: ■ □

Capacity: 4.5 Litres per SB800 Burner

Consumption: avg 0.6 lt/hr per SB800 Burner

Burning Time: Up to 8 hours per SB800 Burner

Performance: 5.4 kW/hr rating per SB800 Burner**

- Fireboxes in contemporary stretched linear formats.
- Supplied complete with a matching burner.
- Shallow depth simplifies installation.
- Choice of fascia: Black or Brushed Stainless Steel.
- Interior finish: Black.
- Suits indoor and outdoor use.
- Please refer to spec sheets and manuals for installation guides.
- Products are flat packed and need assembly.

** Please note KW/hr should be calculated by the combination of both burners.