



BEST SELLERS





A LEADING
PROVIDER OF
ECO-FRIENDLY,
SUSTAINABLE
FOOD PACKAGING
AND SERVING
PRODUCTS
FOR THE FOOD
AND BEVERAGE
INDUSTRY.



We offer a wide range of B2B and B2C solutions, including biodegradable plates, bowls, boxes, packaging and cutlery made from sustainable materials like fallen leaves, bamboo and balsa wood. Our products have been specifically designed to cater to the needs of industries seeking to reduce their environmental footprint, while simultaneously offering their customers high-quality and visually appealing packaging. Whether you're looking for disposable plates for a catering event or sustainable options for your restaurant's takeout packaging, Verterra has the perfect solution for you.

VerTerra is proud to be an official house purveyor of the James Beard Foundation since 2011.

VerTerra is proud to be the official compostable palm plate of the National Association of Catering and Events (NACE) since 2016.

WHY VERTERRA?

Made of 100% renewable resources and BPI-certified compostable, VerTerra's Dinnerware From Fallen Leaves™ is the stylishly sustainable alternative to disposable paper and plastic plates. No trees are ever harvested or cut down for this line. No added chemicals, waxes, dyes or additives.

POSITIVE ENVIRONMENTAL IMPACT

Our partners have contributed to **stopping over 50 million pounds of plastic production.**

CREATES EMPLOYMENT OPPORTUNITIES

We have and continue to create employment opportunities for **thousands of woman in rural India and Indonesia.**

We employed **900 women in women in 2022 - 2023.**

Over the past 17 years, our efforts have led to the creation of **economic resources for over 10,000 women.**



Made from fallen
palm leaves



BPI Certified
Compostable



Withstands hot
foods, liquids,
and oils



Naturally
biodegradable
without chemical
agents



Heats up to
2 minutes in
microwave or **45
minutes** in oven
at 350



Palm leaf becoming
VerTerra Dinnerware



THE PROCESS

01

GATHER LEAVES

Fallen palm leaves are collected & brought to our factories in India.

02

STEAM & PRESS

The palm leaves are steamed & sterilized then pressed into shape.

03

HEAT

The palm leaves are heated to finish the product & retain their shape.

04

USE & ENJOY

The products are ready to display culinary creations & inspire new uses.

05

COMPOST

The products are BPI Certified compostable in an industrial facility or at home.

06

BACK TO THE EARTH

Soil containing VerTerra compost enhances plant growth by 15%.

USES 100% RENEWABLE RESOURCES

VerTerra **produces an excess of 800 million palm plates** each year – the quantity is equivalent to the **distance of a trip to the moon** and back.

Our factories **recycle the water** used during the manufacturing process and the **leftover leaf bits are turned into compost**.

VerTerra Dinnerware Ltd. has exclusive patents for their products that are not held by any other similar businesses. This information is provided to comply with virtual patent marking regulations in various jurisdictions, including Section 16 of the America Invents Act. View this page as there may be additional patents pending in the US and elsewhere which are listed here. <https://www.verterra.com/pages/patent>



RESTAURANTS

Stand out from the crowd with all natural, sustainable serving options from VerTerra. Reduce your carbon footprint without sacrificing style and convenience.



01-20-20B | 01-01-10B



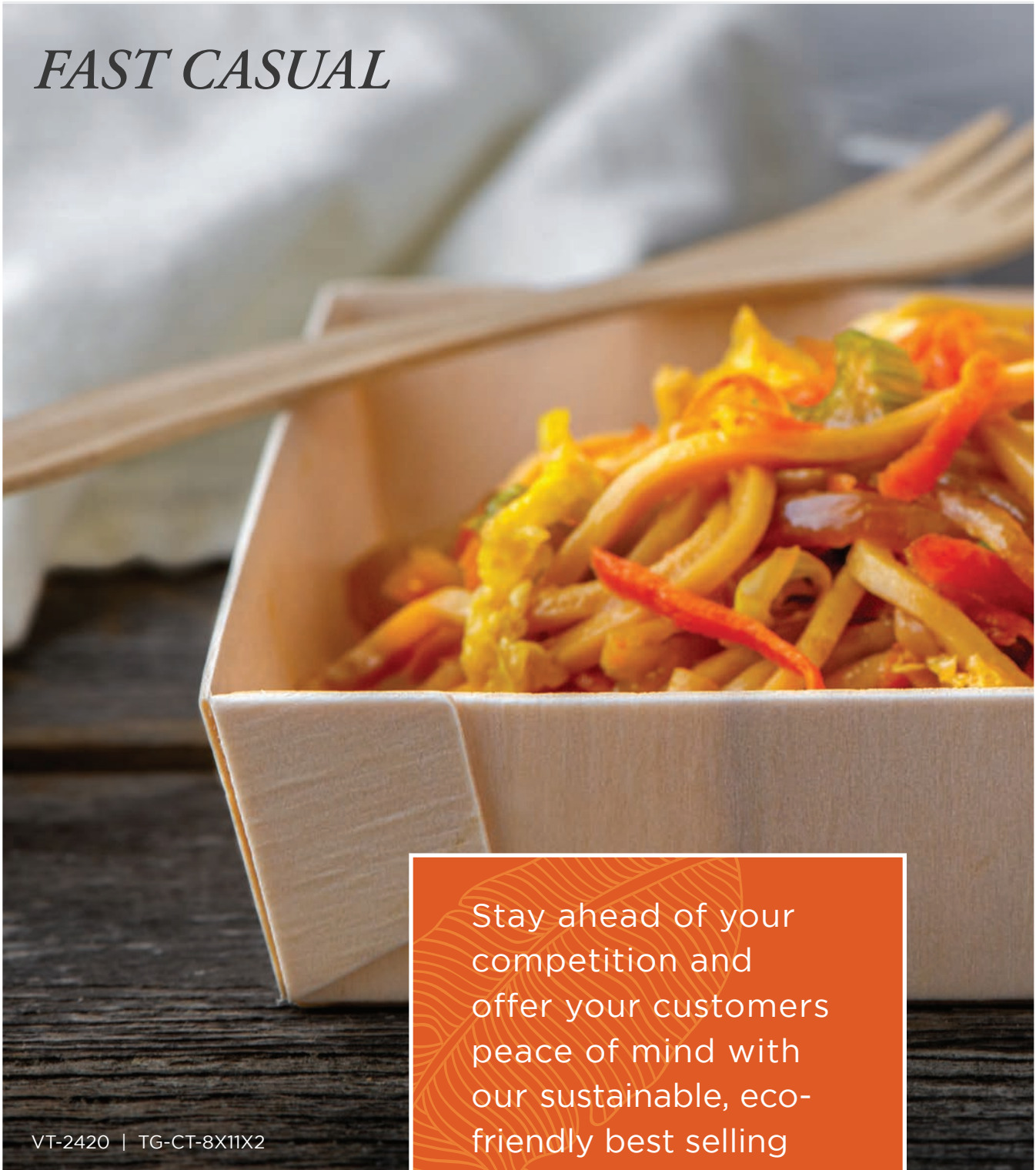
VT-2418 | VT-2420 | VT-2419



VT-PB-11X9-3C



FAST CASUAL



VT-2420 | TG-CT-8X11X2

Stay ahead of your competition and offer your customers peace of mind with our sustainable, eco-friendly best selling products.



HEAVY WEIGHT WOODEN CUTLERY

7" Spoon | VT-2418 | **QTY:** 1000

7" Fork | VT-2420 | **QTY:** 1000

7" Knife | VT-2419 | **QTY:** 1000



MEDIUM WEIGHT WOODEN CUTLERY

7" Spoon | VT-E2-MS | **QTY:** 1000

7" Fork | VT-E2-MF | **QTY:** 1000

7" Knife | VT-E2-MK | **QTY:** 1000

7" Cutlery Kit | VT-E2-MC | **QTY:** 400
(spoon, fork, knife, napkin)



ROUND PALM PLATE

7" | 01-01-20B | **QTY:** 300

10" | 01-01-25B | **QTY:** 300



SQUARE PALM PLATE

6" | 01-22-15B | **QTY:** 300

7" | 01-00-16B | **QTY:** 300

8" | 01-20-20B | **QTY:** 300

9" | 01-20-25B | **QTY:** 300

10" | 01-20-25C | **QTY:** 300



3 COMPARTMENT PRESS BOARD BENTO BOX

7"x9" | VT-PB-9X7-3C | **QTY:** 200

9"x11" | VT-PB-11X9-3C | **QTY:** 150



4 COMPARTMENT WINDOW PRESS BOARD BENTO BOX

9"x9" | VT-PBW-9X9-4C | **QTY:** 100



BALSA WOOD TRAY WITH CLEAR LID

8"x11"x1" | TG-CT-8X11X1 | **QTY:** 50

8"x11"x2" | TG-CT-8X11X2 | **QTY:** 50



STABLE STRAW

5" | VT-STR-05 | **QTY:** 2000

8" | VT-STR-08 | **QTY:** 2000



CHEESEBOARDS & CHARCUTERIE

VT-WUD-16x16



SOLID WOOD TRAYS

10"x10" | VT-WUD-10X10 | QTY: 10

12"x16" | VT-WUD-12X16 | QTY: 10

14"x14" | VT-WUD-14X14 | QTY: 10

16"x16" | VT-WUD-16X16 | QTY: 10

18"x18" | VT-WUD-18X18 | QTY: 10

What makes charcuterie even better?

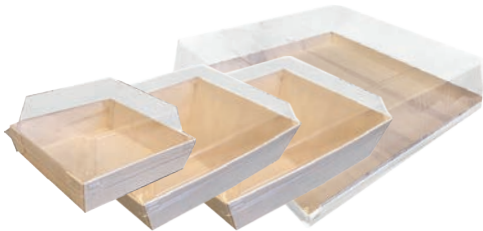
Putting it on a sustainable single-use cheeseboard that is certified compostable or using VerTerra's reusable solid wood trays.



SINGLE-USE CHEESEBOARD (5-10 PEOPLE)

11"x11" | CB-SQ-1X1 | QTY: 50

8"x12" | CB-RC-8X2 | QTY: 100



BALSA WOOD TRAY WITH CLEAR LID

4.6"x4.6" | TG-CT-4.6X4.6 | QTY: 100

6"x8"x2" | TG-CT-6X8X2 | QTY: 100

8"x11"x1" | TG-CT-8X11X1 | QTY: 50

14"x14" | TG-CT-14X14 | QTY: 25

(*16"x16" TRAY & LIDS SOLD SEPARATELY)

16"x16" (tray) | TG-TR-16X16 | QTY: 25

16"x16" (lid) | TG-LD-16X16 | QTY: 25



TG-CT-6X8X2 | TG-CT-4.6X4.6



SUSHI

Our most popular options for your grab-and-go take out service. Elegantly display your sushi in these beautiful, handcrafted balsa wood covered trays.



BALSA WOOD COLLAPSIBLE BOXES WITH ATTACHED LID

4"x6"x2" (small) | TG-CB-4X6 | **QTY: 300**

6"x8"x3" (medium) | TG-CB-6X8H | **QTY: 100**

11"x8"x2" (large) | TG-CB-1X8 | **QTY: 100**

11"x15"x2" (x-large) | TG-CB-1X5H | **QTY: 50**

6"x6"x1" (small) | TG-CB-6X6 | **QTY: 300**

7"x7"x3" (medium) | TG-CB-7X7H | **QTY: 100**



TG-CT-8X11X1



BALSA WOOD TRAY WITH CLEAR LID

4.6" x 4.6" | TG-CT-4.6X4.6 | QTY: 100

6" x 8" x 1" | TG-CT-6X8X1 | QTY: 100

8" x 11" x 1" | TG-CT-8X11X1 | QTY: 50

12" x 12" | TG-CT-12X12 | QTY: 25

14" x 14" | TG-CT-14X14 | QTY: 25



HOTELS

Whether its poolside safe lunch boxes and plates, or a sustainable way to showcase your welcome amenities, VerTerra offers a variety of solutions for your hotel guests.



VT-BX-500



AMENITIES

TG-CT-8X11X2

Presentation matters. VerTerra offers plates, bowls, trays, and boxes for room service, poolside or grab-and-go snacks.



CLICK N LOCK TO-GO-BOX
3"x4"x2" (petite) | TG-LB-3X4 | **QTY:** 300



PALM LEAF PLATE & BOWL SERVING SET
4.75"x6.75" | VT-BX-500 | **QTY:** 200
6.25"x7" | VT-BX-750 | **QTY:** 200
9"x5" | VT-BX-1000 | **QTY:** 125



SQUARE RIM-LOCK CLAMSHELL TO-GO
9" | VT-LD-9X9PT | **QTY:** 150



BALSA WOOD TRAY WITH CLEAR COVER
8"x11"x2" | TG-CT-8X11X2 | **QTY:** 50

SQUARE PALM PLATE
9" | 01-20-25B | **QTY:** 300



3 COMPARTMENT PRESS BOARD BENTO BOX
7"x 9" | VT-PB-9X7-3C | **QTY:** 200



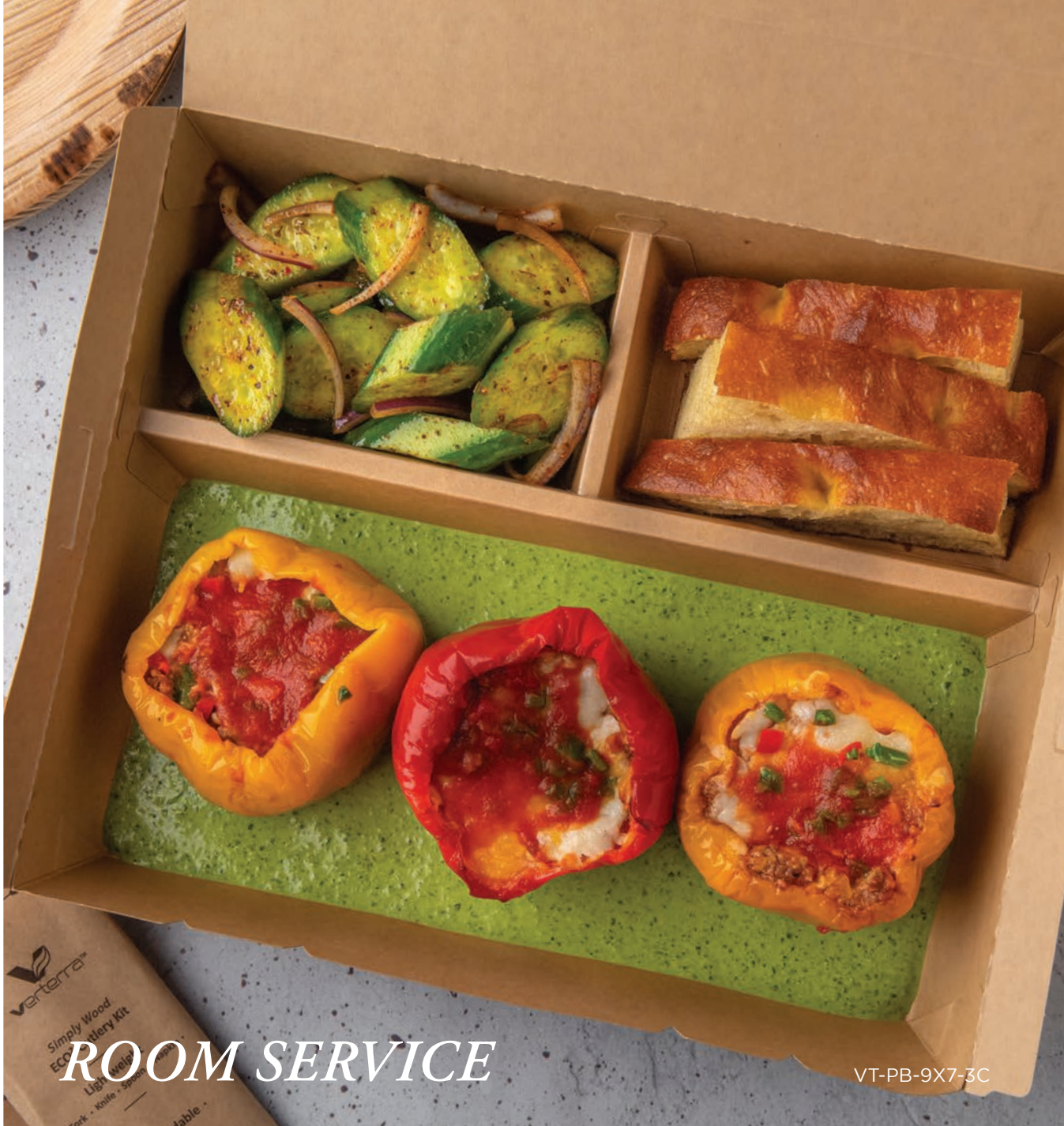
4 COMPARTMENT WINDOW PRESS BOARD BENTO BOX
9"x9" | VT-PBW-9X9-4C | **QTY:** 100



BALSA WOOD COLLAPSIBLE BOXES WITH ATTACHED WINDOWED LID
6"x8"x3" (medium) | WB-CB-6X8 | **QTY:** 50
8"x11"x3" (large) | WB-CB-8X1 | **QTY:** 50



BALSA WOOD COLLAPSIBLE BOXES WITH ATTACHED LID
6"x8"x3" (medium) | TG-CB-6X8H | **QTY:** 100
8"x11"x3" (large) | TG-CB-8X1 | **QTY:** 100
11"x8"x2" (large) | TG-CB-1X8 | **QTY:** 100



verterra
Simply Wood
Eco-Friendly Kit
Lightweight
Fork • Knife • Spoon
Table

ROOM SERVICE

VT-PB-9X7-3C



01-20-25B



VT-LD-9X9PT
01-20-25B



CATERING & BANQUETS

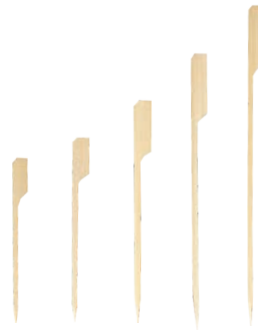
You never have to worry about how your catering or banquet presentations will look with the natural and eco-friendly packaging and serveware from VerTerra.



01-20-20B



ROUND PALM BOWL
3.5" (4oz.) | 01-01-10B | **QTY:** 600



BAMBOO PADDLE PICKS
3.5" | VT-PK-03 | **QTY:** 5000
4" | VT-PK-04 | **QTY:** 5000
6" | VT-PK-06 | **QTY:** 5000
7" | VT-PK-07 | **QTY:** 2500
8" | VT-PK-08 | **QTY:** 2500



SQUARE PALM PLATES
4" | 01-22-10B | **QTY:** 600
6" | 01-22-15B | **QTY:** 300
8" | 01-20-20B | **QTY:** 300
9" | 01-20-25B | **QTY:** 300



BALSA WOOD TRAY WITH CLEAR COVER
8x11x1" | TG-CT-8X11X1 | **QTY:** 50
8x11x2" | TG-CT-8x11X2 | **QTY:** 50
12x12" | TG-CT-12X12 | **QTY:** 25
14x14" | TG-CT-14X14 | **QTY:** 25





VT-WUD-16X16



SOLID WOOD TRAYS

12"x12" | VT-WUD-12X12 | **QTY:** 10

12"x16" | VT-WUD-12X16 | **QTY:** 10

16"x16" | VT-WUD-16X16 | **QTY:** 10

18"x18" | VT-WUD-18X18 | **QTY:** 10



VENUES

Serve up your concession stand fare, barbeque, pizza and fries with the sturdiest and top rated eco-friendly plates on the market today. Naturally oil and water resistant ensures your customers enjoy every last bite.



FESTIVALS & TASTINGS

01-01-10B



SQUARE PALM PLATES
4" | 01-22-10B | QTY: 600
6" | 01-22-15B | QTY: 300
8" | 01-20-20B | QTY: 300



RECTANGLE PALM TRAY
6"x9" | 01-22-6X9 | QTY: 300





01-01-10B | VT-2406



SQUARE PALM BOWL

3" (4oz.) | 01-01-11B | **QTY:** 600



DEEP SQUARE PALM PLATE

4" | 01-22-10D | **QTY:** 600



ROUND PALM BOWLS

3.5" (4oz.) | 01-01-10B | **QTY:** 600

5" (10oz) | 01-00-5DR | **QTY:** 300



**HEAVYWEIGHT WOODEN
TASTING CUTLERY**

4" Spork | VT-2406 | **QTY:** 2500

4" Spoon | VT-2407 | **QTY:** 2500



AIRPORT LOUNGES

01-22-10B

Our line of palm leaf plates, balsa wood boxes, and wooden cutlery provides an eco-friendly and sustainable alternative to harmful plastic disposable plates.



01-22-10B



LIGHTWEIGHT WOODEN CUTLERY

6" Spoon | VT-E2-13 | **QTY:** 1000

6" Fork | VT-E2-11 | **QTY:** 1000

6" Knife | VT-E2-12 | **QTY:** 1000



SQUARE PALM BOWL

5" (12oz.) | 01-00-18B | **QTY:** 300



SQUARE PALM PLATES

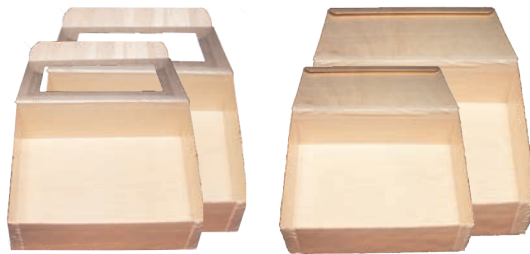
4" | 01-22-10B | **QTY:** 600

6" | 01-22-15B | **QTY:** 300

7" | 01-00-16B | **QTY:** 600

8" | 01-20-20B | **QTY:** 300

9" | 01-20-25B | **QTY:** 300



BALSA WOOD COLLAPSIBLE BOXES WITH ATTACHED LID

6"x8"x3" (medium, window) | WB-CB-6X8 | **QTY:** 50

8"x11"x3" (large, window) | WB-CB-8X1 | **QTY:** 50

6"x8"x3" (medium) | TG-CB-6X8H | **QTY:** 100

11"x8"x2" (large) | TG-CB-1X8 | **QTY:** 100



CONVENTION CENTERS

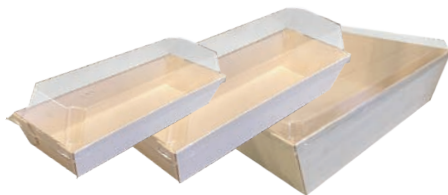


DINNER
ROASTED TOGARASHI SALMON
with Carol, Edamame & Pepper Stir Fry
SKILLET-SEARED FLAT IRON STEAK
with Garden-Herb Chimichurri

VerTerra's packaging solutions are PFOA and PFOS free and made from renewable resources, providing a range of options to meet the unique needs of your business.



TG-CT-9.8X3



BALSA WOOD TRAY WITH CLEAR LID
9.8"x3"x1.5" | TG-CT-9.8X3 | **QTY: 100**
11.8"x2.6" | TG-CT-11.8X2.6 | **QTY: 100**
11.8"x15" | TG-CT-11X15 | **QTY: 50**



BALSA WOOD COLLAPSIBLE BOXES WITH ATTACHED WINDOWED LID
4"x6"x2" (small) | WB-CB-4X6 | **QTY: 300**
6"x8"x3" (medium) | WB-CB-6X8 | **QTY: 50**
8"x11"x3" (large) | WB-CB-8X1 | **QTY: 50**



3 COMPARTMENT PRESS BOARD BENTO BOX
9"x7"x2" | VT-PB-9X7-3C | **QTY: 200**
11"x9"x2" | VT-PB-11X9-3C | **QTY: 150**
10"x10"x2" | VT-PB-10X10-3C | **QTY: 120**



SOLID WOOD TRAYS
10"x10" | VT-WUD-10X10 | **QTY: 10**
12"x12" | VT-WUD-12X12 | **QTY: 10**
12"x16" | VT-WUD-12X16 | **QTY: 10**
14"x14" | VT-WUD-14X14 | **QTY: 10**
16"x16" | VT-WUD-16X16 | **QTY: 10**
18"x18" | VT-WUD-18X18 | **QTY: 10**



SPECIALTY FOODS & RETAIL GROCERS

Are your patrons asking for alternative solutions to paper and plastic plates? VerTerra has sustainable, eco-friendly palm leaf plates available and pre-packaged ready to sell on your shelves.



SQUARE PALM PLATE RETAIL PACKAGING – 10 PACK

6" | VER-PLS-06R | QTY: 100

7" | VER-PLS-07R | QTY: 100

8" | VER-PLS-08R | QTY: 100

9" | VER-PLS-09R | QTY: 100

10" | VER-PLS-10R | QTY: 100



Give your patrons an earth friendly, renewable resource alternative and have them coming back for all their disposable needs.





BAKERIES & CHOCOLATIERS

Reimagine paper boxes and replace your bakery packaging with eco-friendly, certified compostable trays and containers.



TG-CB-6x6



BALSA WOOD TRAY WITH CLEAR COVER

7"x2"x1" | TG-CT-7X2 | **QTY:** 100



SQUARE RIM-LOCK CLAMSHELL TO-GO

6" | VT-LD-6X6PT | **QTY:** 150

8" | VT-LD-8X8PT | **QTY:** 150

9" | VT-LD-9X9PT | **QTY:** 150



SQUARE PALM PLATES

6" | 01-22-15B | **QTY:** 300

8" | 01-20-20B | **QTY:** 300

9" | 01-20-25B | **QTY:** 300



BALSA WOOD COLLAPSIBLE BOXES WITH ATTACHED LID

4"x6"x2" (small, window) | WB-CB-4X6 | **QTY:** 300

6"x8"x3" (medium, window) | WB-CB-6x8 | **QTY:** 50

6"x6"x1" (small) | TG-CB-6X6 | **QTY:** 300

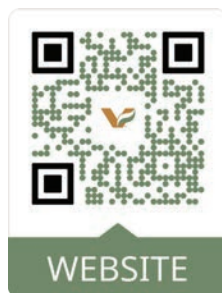
7"x7"x3" (medium) | TG-CB-7X7H | **QTY:** 100

Compliment your baked goods and showoff your chocolatier skill set with some of our best selling, and performing, products your clients will love.



TG-CB-6X6 | TG-CT-7X2





For more information or pricing details, contact:
sales@verterra.com | (212) 760-1200