

# THE EFFECTS OF SALMON FISHERIES ON SOUTHERN RESIDENT KILLER WHALES

## FINAL REPORT OF THE INDEPENDENT SCIENCE PANEL

### **Prepared for**

National Marine Fisheries Service  
(NOAA Fisheries)  
7600 Sand Point Way NE,  
Seattle, WA, USA  
98115-0070

Fisheries and Oceans Canada (DFO)  
200 – 401 Burrard Street  
Vancouver, BC, Canada  
V6C 3S4

### **Prepared by**

Independent Science Panel of the  
Bilateral Scientific Workshop Process to  
Evaluate the Effects of Salmon Fisheries on  
Southern Resident Killer Whales

### **with**

David Marmorek and Alexander Hall  
ESSA Technologies Ltd.  
2695 Granville Street, Suite 600  
Vancouver, BC V6H 3H4

November 30, 2012

Citation: **Hilborn, R., S.P. Cox, F.M.D. Gulland, D.G. Hankin, N.T. Hobbs, D.E. Schindler, and A.W. Trites.** 2012. The Effects of Salmon Fisheries on Southern Resident Killer Whales: Final Report of the Independent Science Panel. Prepared with the assistance of D.R. Marmorek and A.W. Hall, ESSA Technologies Ltd., Vancouver, B.C. for National Marine Fisheries Service (Seattle. WA) and Fisheries and Oceans Canada (Vancouver. BC). xv + 61 pp. + Appendices.

## EXECUTIVE SUMMARY

### Approach Used in the 2010 Biological Opinion

The 2010 Biological Opinion (NMFS 2011a) and the presentations at the first two workshops developed a chain of logic for how Chinook salmon fisheries affect Southern Resident Killer Whales (SRKW). The logic can be described as follows:

1. SRKW depend upon Chinook salmon as a critical food resource. This is supported by summer diet information.
2. SRKW are occasionally in poor condition, which may indicate nutritional stress. Poor condition is supported by photogrammetry and observations of the “peanut-head” syndrome.
3. Individuals who have been identified as being in poor condition have a higher probability of dying than individuals who have not been so identified.
4. SRKW fecundity, death rates and rates of population increase have shown statistical correlations with some indices of Chinook salmon abundance.
5. Reducing Chinook salmon harvesting would increase the availability of Chinook salmon to SRKW.
6. Models using the coefficients of the statistical models (from item 4 above) suggest that there would be a slightly larger SRKW population on average if more Chinook salmon were available to SRKW.

The core of the analysis in the Biological Opinion is the statistical correlation between indices of Chinook salmon abundance and rates of increase in the SRKW population. The rest of the logic provides a mechanistic explanation for why that correlation could be causative.

### The Conclusions of the Panel

#### Status of Southern Resident Killer Whales

The SRKW population has on average been increasing slowly (about 0.71% per year) since the 1970s with alternating periods of increase and decline. Because of the small population size, much of the fluctuations may be the result of random events, but sustained periods of increase and decline, shared between both SRKW and NRKW (Northern Resident Killer Whales), suggest there is likely a common causal factor influencing their population dynamics. The two issues of concern about the status of SRKW are the low population size and the low rate of increase. Compared to NRKW the SRKW have a smaller population size, a slower growth rate, lower birth rates, and higher

death rates. Historical population sizes were discussed in the 2010 Biological Opinion, and are also reviewed in Section 2.1 of this report.

Using the birth and death rates averaged over 1974 to 2011, the SRKW population should have grown at about 1% per year. The difference between this and the observed growth rate of 0.71% is due to the sex ratio—SRKW have had more surviving male births than surviving female births and thus an observed rate of increase that is lower than what would be expected if sex ratio of surviving births was 50:50.

The total population declined significantly for five years in the late 1990s and the largest pod (L pod) has declined further since 2000. There is serious concern about the L pod with only three surviving females producing surviving female offspring in recent years. The estimated rate of increase for the L pod is positive (see **Figure 2-1**), but this long term expectation assumes a stable age distribution (and the current age and sex distribution of the L pod is far from what one would expect on average). L pod has experienced low numbers of births due to the small number of adult females in prime breeding ages, but appears to have similar age-specific fecundity as females in the J and K pods.

**Key Point:**

The SRKW population has been observed to increase at an average rate of 0.71% per year, and would be expected to increase at about 1% per year in the long term if sex ratio at birth were 50:50.

The Panel believes that the existing delisting criterion of 2.3% growth rate is unlikely to be achieved given current circumstances or by reducing Chinook salmon fisheries, but given the estimated rates of increase, SRKW should eventually increase to a point where a reappraisal of their status would likely occur. It is difficult to estimate what the potential maximum population for SRKW may be, and NRKW, seals and sea lions all compete with SRKW for their food supply, which may limit the potential of SRKW to continue to increase in the long-term. The Biological Opinion discusses potential carrying capacities from a minimum of 140 animals to a maximum of 400. Demographic reconstruction showed that the largest known size was likely 96 animals in 1967 (Ford and Parsons 2012, slide 4), leading to the conclusion that the population size has not varied dramatically over the last 45 years. We would expect the rate of increase to decline as the population approaches the carrying capacity. The lower growth rate of SRKW compared to NRKW could be because the SRKW are closer to their carrying capacity.

**Key Point:**

The panel believes that the existing delisting criterion of 2.3% growth rate is unlikely to be achieved given current circumstances or by reducing Chinook salmon fisheries. But if the total abundance continues to increase, a point will be reached where a reappraisal of their status would be likely.

An alternative demographic analysis was presented to the Panel during Workshop 3 (Vélez-Espino et al. 2012) that reached conclusions that departed substantially from those presented in the first two workshops (discussed above). In particular the estimated rate of increase was slightly less than 1.0 (0.99) indicating that, on average, the population was expected to decline, although the uncertainty in this estimate means that positive growth rates cannot be ruled out. It is the conclusion of the Panel that the Vélez-Espino et al. analysis is preliminary. It is the Panel's understanding that the co-authors of this presentation had not yet reviewed it. The analyses presented in the earlier workshops by Ward had been more thoroughly reviewed. Major components of these analysis have undergone peer review and have been published (Ward et al. 2009, Ward et al. 2010). Thus, the Panel concludes that the most credible analysis of SRKW demographics at this point comes from the Ward presentations (Ward and Barre 2012, Ward et al. 2012).

### **SRKW Dependency on Chinook Salmon**

Diet information from SRKW in the summer indicates a heavy reliance on Chinook salmon. As Chinook salmon abundance declines in the fall, the diet data show that chum salmon and other species become more important. There are little winter diet data, but the data that do exist also suggest the importance of Chinook salmon.

The age distribution of Chinook salmon consumed by SRKW does not match the predicted age distribution of Chinook salmon thought to be available to killer whales. Instead, SRKW consume greater proportions of the larger (older) fish (particularly the 4- and 5-year-olds) relative to the overall numbers of Chinook salmon present.

It seems somewhat illogical that SRKW would forgo feeding on other species of fish at times of low Chinook salmon abundance, and there are not enough data to determine if the percentage Chinook salmon in the diet is related to inter-annual variation in abundance of Chinook salmon. Other fish-eating killer whales in the North Pacific show a broader range of diet. However, the increase in the frequency of feeding on other species as summer ends and Chinook salmon availability declines does suggest that SRKW do switch to other species at times and places of low Chinook salmon abundance.

The Panel found the evidence for strong reliance on Chinook salmon in the summer convincing. However, given that the density of Chinook salmon in the summer as they migrate to the Fraser River is far higher than the density in the rest of the year when Chinook salmon are spread over a much larger area, it seems unlikely that the summer period would be the most critical period where Chinook salmon abundance affected SRKW vital rates.

**Key Point:**

The evidence for strong reliance on Chinook salmon in the summer is convincing, but it is also clear that SRKW will switch to alternative, more abundant chum salmon when Chinook of suitable size and quality are not readily available in the fall.

**Poor Condition and Possible Nutritional Stress**

Some SRKW have been seen in poor condition (which can be caused by nutritional stress or other factors) and animals in poor condition have a higher probability of dying. The strongest suggestion of poor condition is the photographic evidence from Durban et al. (2009) that documented 13 SRKW in poor condition over the period 1994 through 2008—of which all but two of these individuals subsequently died. Poor condition and nutritional stress could contribute to increased mortality or reduced fecundity of SRKW through a variety of mechanisms (i.e., direct starvation, increased susceptibility to trauma due to increased movements to forage, decreased resistance to infectious disease, mobilization of lipophilic toxic chemicals), as well as to decreased recruitment through changes in calving interval and calf survival. There are insufficient data to relate the incidence of poor condition to nutritional stress caused by low Chinook salmon abundance or other causative factors. These data serve primarily to support the assertion that poor condition, which is clearly linked to increased risk of mortality, and by implication to fecundity, may reflect nutritional stress.

The Panel believes the photographic evidence is convincing that poor condition (and *possibly* nutritional stress) is an issue of concern for SRKW. However, not all members of the Panel were convinced that poor condition was *necessarily* an indicator of nutritional stress (due to low availability of prey) as compared to some other factor (disease, organ malfunction) that might lead to reduced or less successful feeding and thereby generate "poor condition". Unless a large fraction of the population experienced poor condition in a particular year, and there was ancillary information suggesting a shortage of prey in that same year, malnutrition remains only one of several possible causes of poor condition.

Presentations on fecal hormone levels argued that the decline in T3 values through spring and summer indicated nutritional stress during this period. This change could be explained by changes in photoperiod, as well as by individual differences in nutritional status, age, sex, reproductive status, stress, and PCB exposure of individuals sampled. Unfortunately, the lack of fecal hormone data in winter months due to logistical difficulties associated with sample collection limits the current utility of the available fecal hormone data to assess the nutritional status of the SRKW.

**Key Point:**

Photographic evidence supports the assertion that poor condition, which is linked to mortality, and by implication to fecundity, may reflect nutritional stress. However, unless a large fraction of the population experienced poor condition in a particular year, and there was ancillary information suggesting a shortage of prey in that same year, malnutrition remains only one of several possible causes of poor condition.

## **Fisheries and Prey Availability**

### **Trends in Chinook salmon abundance**

Contemporary abundances of Chinook salmon in the Pacific Northwest and California have been greatly reduced from historic abundances and many Evolutionarily Significant Units (ESUs) of Chinook salmon are listed as threatened or endangered under the US Endangered Species Act. Many British Columbia stocks of Chinook salmon have also been identified as stocks of conservation concern. Declines in abundance of spring-run fish have been particularly evident in California's Central Valley, in the Columbia River (interior spring Chinook salmon) and in Puget Sound. Associated with the declines in abundance have also been shifts in age structure of many populations toward younger ages and smaller adults.

Comparing averages for 2001-2010 with those for 1979-1988 and considering stocks of likely importance to the SRKW, (1) Fraser Early Chinook salmon total abundance (terminal<sup>1</sup> run + fishery impacts) has increased by about 36%, and terminal run size has increased by more than 100%; (2) West Coast Vancouver Island aggregate total abundance has decreased by 35%, but terminal run sizes have increased by about 19%; (3) Fraser Late Chinook salmon total abundance has decreased by about 51%, but terminal run size has increased by about 38%; and (4) Puget Sound total abundance has decreased by about 38%, but terminal run size has not changed. Coast-wide, there has been an approximately 16% decrease in total Chinook salmon abundance over this period, but a concurrent 37% increase in ocean escapement to terminal areas. Substantial reduction in ocean fishing has resulted in more Chinook salmon being available to SRKW during the summer when they feed on homeward bound fish, despite a slight decrease in total Chinook salmon abundance.

### **Spatial and temporal overlap between SRKW and Chinook salmon stocks**

SRKW are found almost exclusively in the Salish Sea and in coastal waters near the entrance to the Strait of Juan de Fuca during the July–September period. During the April–June period, only about 32% of SRKW sightings have been in the Salish Sea with remaining sightings primarily in coastal waters off northern Oregon and Washington and outside waters off Vancouver Island. During winter months, SRKW are sometimes distributed off of central California and seem to be found more frequently off the Washington coast.

---

<sup>1</sup> terminal fisheries are those that take place on mature fish as the return, either in freshwater or in saltwater in the vicinity of their natal streams.

Available data are inadequate to allow assessment of winter (January–March) distribution patterns of both Chinook salmon and SRKW, so it is not possible to reliably assess the possible degree of overlap of SRKW and Chinook salmon during this period. However, SRKW tissue carbon and nitrogen stable isotope and contaminant fingerprint analyses are consistent with a SRKW diet comprised of Chinook salmon from a wide range of sources well outside the narrowly defined Puget Sound/Fraser River area.

### **Would reducing harvest increase Chinook salmon availability?**

Recent analyses presented at the workshops explored whether reductions in Chinook salmon harvest would increase food for SRKW and thus SRKW population rates of increase. These analyses assume that a certain number of Chinook salmon foregone from the harvest will result in an equivalent increase in abundance of Chinook salmon for SRKW. They assume that closing all ocean fisheries will directly result in short-term increases in the abundance of Chinook salmon that are available to SRKW.

Eliminating ocean fisheries and managing freshwater fisheries for maximum recruitment would result in an additional long-term increase in the total Chinook salmon population compared to the present due to the elimination of ocean interception of immature salmon prior to maturity and higher escapements resulting from the reduction in terminal fisheries. For a given stock, this benefit would depend on the current age-specific ocean fishery exploitation rates and the stock-specific maturation schedule. However, the long-term benefits appear to be rather small. Assuming that current escapements and exploitation rates are those that maximize sustainable yield means that Chinook salmon escapements are currently close to levels that produce maximum total Chinook salmon recruitment. This is the assumption of the management agencies, and the Panel was not in a position to review the underlying analysis of the management agencies. Hatchery stocks are generally at full production and not limited by escapements, so increase in escapements would not result in increased hatchery production. Efforts to rebuild Chinook salmon runs depend primarily on restoring the productivity and carrying capacity of freshwater spawning, rearing and migratory habitats. The other potential for substantially higher Chinook salmon returns is a change in ocean conditions which might return ocean survival to the higher rates seen prior to the 1980s. This is beyond management control, but there is some evidence that ocean survival rates of Chinook salmon have increased in recent years.



**Key Point:**

The maximum long-term increases in abundance of Chinook salmon that might theoretically be available to SRKW would be achieved by eliminating all ocean fishing (typically at least 20% increase in ocean abundance of age-4 and age-5 hatchery and wild fish due to elimination of ocean fishery interception of immature fish) and by maximizing recruitment through manipulation of freshwater exploitation rates to maximize recruitment (6-9% increase in recruitments of wild fish; no impact on hatchery fish).

The best potential for increased Chinook salmon abundance is restoration of freshwater habitat, reducing downstream migration mortality and a change in ocean conditions.

**Does reduced Chinook salmon catch result in equivalent increase in Chinook salmon for SRKW?**

There are several reasons why reductions in ocean catch of Chinook salmon do not equate to an equivalent increase in availability of Chinook salmon to SRKW. First and foremost, there are a range of other predators on Chinook salmon, especially NRKW, harbor seals and sea lions that may eat some of the foregone Chinook salmon before or at the same time that the SRKW have access to them. The actual increase in food availability to SRKW may be considerably less than the foregone harvest.

Second, the foregone harvest would likely not consist exclusively of Chinook salmon stocks that are important to SRKW. Most Chinook salmon harvesting takes place on a mix of stocks, and some foregone harvest would almost certainly be fish not important or critical to SRKW.

Third, if Chinook abundance in the summer is critical, then the key Chinook salmon in summer are mature fish. Yet many of the Chinook salmon fisheries harvest a mix of immature and mature fish. While the foregone immature fish would ultimately become mature if they survived, not all would survive and thus not all foregone harvest would result in mature fish. The abundance of immature mature fish in summer available to SRKW would not increase equally with foregone immature Chinook salmon harvest because of the other sources of mortality that would occur between the time of foregone catch and availability in the summer to SRKW.

Finally, the currently low ocean harvest rates on Chinook salmon (on the order of 20% on average) means that there is limited opportunity for reductions in Chinook salmon harvesting to increase the abundance of Chinook salmon.

The Panel sees many potential reasons why all foregone Chinook salmon catch would not be available to SRKW, and is therefore skeptical that reduced Chinook salmon harvesting would have a large impact on the abundance of Chinook salmon available to SRKW.

**Key Point:**

The panel sees many potential reasons why not all foregone Chinook salmon catch would be available to SRKW, and is therefore skeptical that reduced Chinook salmon harvesting would have a large impact on the abundance of Chinook salmon available to SRKW.

## **Projected Future Status and Recovery**

### **Statistical correlation between Chinook salmon abundance and rates of increase in SRKW**

Several analyses performed by both NOAA and DFO have shown correlations between Chinook abundance and the rate of increase for SRKW. The presentations at Workshop 2 by Eric Ward and co-authors used the Kope-Parken index of salmon abundance and showed significant correlation between the Chinook salmon abundance index and SRKW survival, and a weak indication of some impact on fecundity. This analysis is the core of the evidence that changing Chinook salmon abundance affects SRKW demographic parameters. The statistical analysis performed used modern methods and has been very thorough. The Panel considers the methods used to evaluate the relationship between salmon abundance and SRKW fecundity, survival, and population growth rates scientifically reasonable and state-of-the-art.

Although there is a reasonable body of scientific evidence showing that Chinook salmon are important prey for SRKW, there is a limited range of specific observational evidence and no possibility of experimental evidence linking Chinook salmon abundance to SRKW population growth. Because SRKW growth and salmon abundance data are observations of uncontrolled events obtained from an unknown sampling design, there is a high risk of incorrectly assigning causes to correlations and making weak inferences.

A major concern is the choice of indices of Chinook salmon abundance. The Panel believes that an index that reflects overall Chinook salmon abundance would be the most likely to reflect food available to SRKW over both summer and winter.

The fact that density dependence was stronger in the NRKW population than in the SRKW population (Ward et al. 2012a, slide 59) suggests that the northern population should experience stronger bottom-up limitations as the population grows, a prediction that is contrary to observations. All of these difficulties of interpretation cast doubt on a simple, causal interpretation of the positive correlation between salmon abundance and SRKW vital rates. However, the Panel must also point out that the relatively narrow range of density during the period of analysis may mean that there was insufficient statistical sensitivity to detect effects of density. The Panel believes the NOAA and DFO scientists have done an excellent job of their statistical analysis, but in the end believe considerable caution is warranted in interpreting the results as confirming a linear causative relationship between Chinook salmon abundance and SRKW survival.

**Key Point:**

The statistical analysis by NOAA and DFO scientists are excellent, but the Panel believes considerable caution is warranted in interpreting the correlative results as confirming a linear causal relationship between Chinook salmon abundance and SRKW vital rates.

## **Estimating the Impact of Reducing Chinook Salmon Fisheries on SRKW**

In the original Biological Opinion on the Puget Sound Chinook Harvest Management Plan, NOAA Fisheries devised and evaluated alternative fishery regimes to assess their relative impact on future status and recovery of SRKW (NOAA/DFO letter to Panel, Aug. 22, 2012). Over the course of three workshops, the alternative fishery regimes have essentially been reduced to two: (1) maintain status quo with ocean fishery exploitation rates on the order of 20%; and (2) close all ocean fisheries. Such a simplification is probably warranted in this case given what appears to be a revised understanding of interactions between fisheries and SRKW. In particular, it seems to be a gross extrapolation to implicate any particular fishery, including those during the peak period of Chinook salmon abundance in summer, in affecting SRKW population growth rate. Instead, a more plausible working hypothesis is that highly mobile SRKW (and NRKW) respond to larger spatial scale changes in Chinook salmon abundance than can be appreciably affected by any specific Chinook salmon fishery.

The evidence seems reasonably strong that vital rates of SRKW are, to some degree, ultimately affected by broad-scale changes in their primary Chinook salmon prey. However, even if there is a causal mechanism, the Panel's opinion is also that such a mechanism is probably not a simple linear cause-and-effect one for a variety of reasons. For example, if Chinook salmon abundance is causally related to SRKW mortality and fecundity, then it also seems likely that SRKW (and other predators) can cause changes in Chinook salmon mortality. Such feedbacks imply non-linear density dependence in SRKW growth rate (e.g., a large region of Chinook salmon abundance over which growth response is small, but a small region where growth response is large). The logistic regression models and supporting auxiliary evidence reflect only a narrow range of abundance for both SRKW predators and their Chinook salmon prey, which increases the risk of poorly capturing these relationships. Thus, the Panel's overall view is that the predator-prey system involving Chinook salmon, SRKW, NRKW, and some pinnipeds is only partially described by correlations between Chinook salmon and SRKW. Therefore, any predictions about impacts of changing fisheries may not be robust to changes in the status of other Chinook salmon predators, or even to changes in Chinook salmon abundance.

**Key Point:**

The Panel is not confident that understanding of the interaction between Chinook salmon fisheries, other predators and SRKW vital rates, is sufficient to expect the model predictions of increased SRKWs to be accurate.

The Panel expects the model predictions to overestimate the impact of reductions in Chinook salmon catch on SRKW.

## **Mechanisms for Chinook Salmon Abundance Impacting Killer Whale Vital Rates**

Much of the work done by NOAA and DFO, and contained in the Biological Opinion, relates to mechanisms that support the statistical correlation between indices of Chinook salmon abundance and vital rates of SRKW. The basic mechanism is that SRKW are on some occasions food limited, leading to poor condition and lower survival and fecundity, and that Chinook salmon are a highly important part of their food supply. NOAA and DFO have documented that some killer whales are in poor condition, that those in poor condition have lower survival, and that Chinook salmon are an important part of SRKW diet. The mechanistic data developed so far provide some support for causation. Support for causation would be weakened if there were no evidence for poor condition (possibly due to nutritional stress) or if Chinook salmon were not an important part of SRKW diet.

This mechanistic approach does not provide a quantitative method to evaluate the benefits of reducing Chinook salmon harvesting. What is needed is documentation of the relationship between Chinook salmon abundance and the number of animals that are in poor condition. This could provide strong evidence that periods of low Chinook salmon abundance lead to poorer condition, more nutritional stress and lower survival rates. The major limitation to the mechanistic approach at present is that very little information on condition is currently available to provide scientific or management guidance. Similarly there is so little information on winter diet that the mechanistic approach must presently remain merely supportive of causation.

## **Conclusions**

The Panel believes that the estimated benefits of reducing Chinook salmon harvest in NOAA's recent analyses provide a maximum estimate of the benefits to SRKW—and that the realized benefits would likely be lower and insufficient to increase growth rates to a level that meets existing SRKW delisting criteria in the foreseeable future.

The Panel concludes that there is good evidence that Chinook salmon are a very important part of the diet of SRKW and that there is good evidence, collected since 1994, that some SRKW have been in poor condition and poor condition is associated with higher mortality rates. There is a statistical correlation between SRKW survival rates and some indices of Chinook salmon abundance. Based on those correlations, increases in Chinook salmon abundance would lead to higher survival rates, and therefore higher population growth rates of SRKW. However, the effect is not linear as improvements in SRKW survival diminish at Chinook salmon abundance levels beyond the historical average. Using the statistical correlations, consistently positive SRKW growth rates can

occur by avoiding extremely low Chinook salmon abundance levels observed in the 1970-80s and late-1990s. Elimination of ocean fisheries for Chinook salmon would impact Chinook salmon abundance far less than the variations that have been seen since the 1970s.

The Panel cautions against overreliance on the correlative studies, and notes that the level of correlation is highly dependent on the choice of Chinook salmon abundance indicators. The impact of reduced Chinook salmon harvest on future availability of Chinook salmon to SRKW is not clear.

## TABLE OF CONTENTS

<b>Executive Summary .....</b>	<b>iii</b>
<b>Table of Contents .....</b>	<b>xiv</b>
<b>List of Tables .....</b>	<b>xv</b>
<b>List of Figures .....</b>	<b>xv</b>
<b>1.0 Introduction.....</b>	<b>1</b>
1.1 Context.....	1
1.2 Workshop Process.....	1
1.3 The Independent Science Panel.....	3
1.4 Report Overview .....	4
<b>2.0 Status and Growth Rates of Killer Whales .....</b>	<b>7</b>
2.1 Context.....	7
2.2 Key Questions.....	8
2.3 Responses to Key Questions .....	8
2.4 Recommended Information and Analyses .....	16
<b>3.0 Feeding Habits and Energetic Needs of Killer Whales.....</b>	<b>17</b>
3.1 Context.....	17
3.2 Key Questions.....	19
3.3 Responses to Key Questions .....	20
3.4 Recommended Information and Analyses .....	23
<b>4.0 Fisheries and Prey Availability .....</b>	<b>25</b>
4.1 Context.....	25
4.2 General Comments .....	28
4.3 Key Questions and Responses.....	30
4.4 Effects of Possible Reductions in Fisheries on Abundance of Chinook Salmon.....	36
4.5 Recommended Information and Analyses .....	38
<b>5.0 Projected Future Status and Recovery .....</b>	<b>39</b>
5.1 Context.....	39
5.2 Forecasts of SRKW Future Status .....	41
5.3 Recovery criteria.....	44
5.4 Recommended Information and Analyses .....	51
<b>6.0 References.....</b>	<b>53</b>
<b>Appendix A: Original Questions from the NOAA and DFO Steering Committee.....</b>	<b>A-1</b>
<b>Appendix B: Competing Risks of Death (CRD) Modeling.....</b>	<b>B-1</b>

## LIST OF TABLES

<b>Table 1-1.</b> Consolidation of original topics into the sections of the current report.....	4
-------------------------------------------------------------------------------------------------	---

## LIST OF FIGURES

<b>Figure 2-1.</b> Estimates of the posterior distribution of population growth rate.....	10
<b>Figure 2-2.</b> Observations of total population size for SRKW .....	11
<b>Figure 2-3.</b> Posterior distributions of population growth rate for SRKW and NRKW. ....	12
<b>Figure 2-4.</b> Bayesian posterior distributions for survival probability.....	13
<b>Figure 5-1.</b> Posterior predictive distribution and observed births for SRKW.....	43

## 1.0 INTRODUCTION

This report is the final report of the Independent Science Panel of the Bilateral Scientific Workshop Process to Evaluate the Effects of Salmon Fisheries on Southern Resident Killer Whales. This section provides a brief overview of the background context, workshop process, the role of the Independent Science Panel, and an introduction to the structure of the present report.

### 1.1 Context

Southern Resident Killer Whales (SRKW; *Orcinus orca*) are listed as an endangered species under both the Endangered Species Act (ESA) in the US and the Species at Risk Act (SARA) in Canada. The National Marine Fisheries Service (NOAA Fisheries) and Fisheries and Oceans Canada (DFO) have developed and adopted recovery plans for SRKW as required by their respective national statutes. One of the potential threats to the recovery of SRKW may be a reduction in salmon prey available to SRKW due to salmon fisheries. During 2011-2012, NOAA Fisheries and DFO commissioned a series of three scientific workshops to rigorously explore the evidence available to answer the key question:

*To what extent are salmon fisheries affecting recovery of SRKW by reducing the abundance of their available prey, and what are the consequences to their survival and recovery?*

As part of the workshop process, the NOAA and DFO Steering Committee appointed an expert science panel (“the Panel”) to provide an independent review of the evidence available and advice on future research. The scientists from the national, state and tribal fisheries agencies, members of the Panel and other participants in the workshops examined existing research as well as completely new research directed by the outcomes of the first two workshops.

### 1.2 Workshop Process

The detailed design of the workshop process and various outputs of this process, including workshop presentations, background literature, new materials developed for the workshops, preliminary responses from the Panel, and feedback from other participants are all available elsewhere. In this report, the Panel wishes to avoid repeating information that is readily available in other documents. Instead, a brief summary is provided below of other documents, reports and materials associated with the overall workshop process. The following materials are currently all available at <http://www.nwr.noaa.gov/Marine-Mammals/Whales-Dolphins-Porpoise/Killer-Whales/ESA-Status/KW-Chnk.cfm>.



1. **Process Description** – describes the overall workshop process; the role of the Panel, the Science Panel Chair, and the Science Facilitator; the flow of tasks through the entire process; and the contextual background (both scientific and regulatory) to the key question.
2. **Process Diagram** – outlines the timeline associated with the major tasks and stages of the overall workshop process.
3. **Reading List** – breaks the overall question into the original topics used by the Panel to organize their assessment, provides a contextual description of each topic, poses key questions for each topic, and provides an extensive list of relevant background literature.
4. **Background Literature** – a comprehensive library of relevant background literature compiled by the Steering Committee prior to the Workshop 1 for participants and panel members to review.
5. **Workshop Agendas** – lists all the speakers and presentations for each of the three workshops.
6. **Workshop Presentations** – the final presentations delivered by each of the speakers at each of the three workshops.
7. **Workshop Audio Files** – audio recordings of the entire proceedings of each workshop.
8. **Response Papers** – short papers prepared by NOAA and DFO scientists in response to requests from the Panel for additional information on particular topics. These response papers were prepared in place of presentations on these topics at Workshop 2.
9. **Additional Workshop Materials** – additional materials provided by presenters and participants, including supplementary papers or data sets, short papers on additional research not presented, and official institutional statements.
10. **NOAA and DFO Questions & Answers** – provides responses from NOAA and DFO scientists to short-term information / analysis requests that the Panel provided to the Steering Committee shortly after Workshops 1 and 2.
11. **Workshop 1 Proceedings** – includes questions and discussion from Workshop 1 integrated into a compilation of all of the responses (feedback, comments, recommendations, etc.) received from participants following Workshop 1.
12. **Participant Responses to Workshop 2** – written comments, feedback and additional analyses submitted by participants to the Panel in response to Workshop 2.
13. **Science Panel “Reflections” Document** – the preliminary report of the Panel following Workshop 1, including initial responses and recommendations for work to be done prior to Workshop 2. The Panel based its responses on the evidence available prior to the workshop, the presentations and discussion at the workshop, the information available immediately following the workshop, and the feedback submitted by other participants.
14. **Draft Report of the Independent Science Panel** – the May 3, 2012 draft report, completed subsequent to Workshop 2. This draft report was available for public comment for a period of six weeks.
15. **Public Comments on the Draft Report** – the comments and responses submitted during the public review period. Comments were received from individuals and organizations.

## 1.3 The Independent Science Panel

The Independent Science Panel (“the Panel”) consists of seven senior scientists from five US and Canadian universities and one non-university research institution. These scientists were chosen to be members of the Panel according to their relevant expertise in salmon fisheries, killer whales and predator-prey dynamics, and their ability to constructively and objectively collaborate to fulfill the purposes of the workshop process. The Panel comprises the following members:

**Dr. Ray Hilborn** (Chair)

School of Aquatic and Fishery Science, University of Washington, Seattle, WA

**Dr. Sean Cox**

School of Resource and Environmental Management, Simon Fraser University, Burnaby, BC

**Dr. Frances Gulland**

Marine Mammal Center, Sausalito, CA

**Dr. David Hankin**

Department of Fisheries Biology, Humboldt State University, Arcata, CA

**Dr. Tom Hobbs**

Natural Resource Ecology Lab, Colorado State University, Fort Collins, CO

**Dr. Daniel Schindler**

School of Aquatic and Fishery Science, University of Washington, Seattle, WA

**Dr. Andrew Trites**

Marine Mammal Research Unit, University of British Columbia, Vancouver, BC

The principal role of the Panel is to critically evaluate the scientific evidence available and the approach by which that evidence is being used to answer the central question. The Panel attended all of the workshops, questioning the presenters and participating in discussions. In their first report (Hilborn et al., 2011), delivered in November 2011, the Panel provided initial, preliminary responses based on the evidence available prior to Workshop 1, the proceedings of Workshop 1, and the comments and feedback of other participants. The Panel then revised these responses while working on its draft final report (Hilborn et al., 2012), in light of new information and analyses presented at Workshop 2 and additional input from participants.

The Panel then revised its draft report in consideration of the comments received during its public review period, the agency-level comments provided by NOAA and DFO in response to the draft report, and the information presented at the third workshop. Workshop 3 was organized around the topics most frequently or critically addressed in the public comments as well as outstanding questions from the Panel itself. Its focus was to provide new information or clarify existing information where such information could potentially alter the conclusions of the Panel. As the Panel refined its final report, it considered the comments and criticisms received during the public review period, as well as the new, clarified, or re-emphasized information presented at Workshop 3. The ultimate goal of the Panel has been to examine current methods of addressing the central question and provide guidance for future research to reduce critical uncertainties.

The responsibility of the Panel explicitly excludes addressing management issues or making management recommendations. The responsibility of the Panel only covers the critical examination of scientific issues. The Process Description thoroughly describes the full role of the Panel.

## 1.4 Report Overview

The Executive Summary provides an integrated discussion of the most critical themes identified by the Panel and the recommendations that the Panel considered to be of the highest priority across all of the broad topic areas. The Executive Summary is intentionally longer and more thorough than is typical for report of this size. This thorough synthesis of the responses and recommendations of the Panel is not repeated in the main body of the report.

Sections 2.0 to 5.0 provide an examination of each of four broad topic areas in depth. These topic areas represent a consolidation of the nine topics originally identified by NOAA and DFO and addressed in the Panel’s preliminary report subsequent to Workshop 1. The Panel felt that considerable overlap existed among the original topics both in terms of the questions being asked and the evidence available to answer those questions, and that a consolidation of these topics would allow the Panel to address the total suite of questions in a more effective manner. **Table 1-1** illustrates how those original topics were consolidated for the purposes of the Panel’s final report. **Appendix A** provides a complete listing of the original questions posed to the Panel within each topic. Each of these sections serves four broad functions: 1) providing a contextual introduction to the particular topic, including relevant background information; 2) reiterating or summarizing the key questions asked of the Panel across the original topics consolidated into each section; 3) reporting the Panel’s assessment and conclusions in response to those questions; and, 4) providing recommendations, where appropriate, for future research and analysis to reduce key uncertainties and improve the level of scientific understanding.

**Table 1-1.** Consolidation of original topics into the sections of the current report.

Report section	Section title	Topics as originally defined by the NOAA and DFO Steering Committee and addressed in this report
2.0	Status and Growth Rates of Killer Whales	<ul style="list-style-type: none"> <li>• Status of Killer Whales</li> </ul>
3.0	Feeding Habits and Energetic Needs of Killer Whales	<ul style="list-style-type: none"> <li>• Feeding Habits and of Killer Whales</li> <li>• Chinook salmon Needs of Southern Resident Killer Whales</li> <li>• Ratio of Chinook salmon Food Energy Available Compared to Chinook salmon Food Energy Needed by Southern Residents with (and without) Fishing</li> </ul>
4.0	Fisheries and Prey Availability	<ul style="list-style-type: none"> <li>• Fisheries that May Affect Prey Availability</li> <li>• Reduction in Chinook salmon Abundance from Fisheries</li> </ul>
5.0	Projected Future Status and Recovery	<ul style="list-style-type: none"> <li>• Relationship between Chinook salmon Abundance and Killer Whale Population Dynamics</li> <li>• Change in Killer Whale Population Growth Rates Annually, Abundance over Time and Species Survival and Recovery</li> </ul>

The views, conclusions and recommendations of the Panel reported in this document have been informed by multiple sources of evidence within the workshop process (in roughly chronological order):

- literature reviewed prior to Workshop 1
- presentations and discussion at Workshop 1
- responses from NOAA and DFO scientists to short-term requests from the Panel immediately following Workshop 1
- feedback and comments submitted by participants in response to Workshop 1
- feedback from NOAA and DFO scientists on the Panel's preliminary responses
- presentations and discussion at Workshop 2
- response papers prepared for Workshop 2
- additional information and materials provided by participants for Workshop 2
- responses from NOAA and DFO scientists to short-term requests from the Panel immediately following Workshop 2
- direct discussions with NOAA and DFO scientists to clarify methodological questions
- feedback and comments submitted by participants in response to Workshop 2
- feedback and comments submitted by individuals and organizations in response to the Panel's draft final report during the period of public review
- agency-level comments from NOAA and DFO in response to the Panel's draft final report
- presentations and discussion at Workshop 3
- presentations, discussions and written handouts as part of the "correlation vs. causation panel" at Workshop 3
- additional information and discussion provided by workshop participants on the details of their analyses and methodologies, including John Carlile, John Ford, Mike Ford, Robert Kope, Larrie LaVoy, Chuck Parken, Antonio Vélez-Espino, Eric Ward, and many others.



## 2.0 STATUS AND GROWTH RATES OF KILLER WHALES

### 2.1 Context

Data on the abundance and demography of killer whales are unusually detailed as a result of the ability to recognize individuals by photographing their dorsal fins and adjacent markings. Photo identification allows every individual in the population to be observed over time, providing strong data for estimation of population size and vital rates. However, there are limitations to the demographic data. There is very little information on neonatal survival. Causes of deaths are largely unknown.

The abundance of SRKW fluctuated between 67 and 95 individuals during 1974 to 2011 (see **Figure 2-2**). Intervals of population increase alternated with periods of decline, but the duration of intervals of positive growth substantially exceeded those when growth was negative. During 1974 to 2011, the population has been increasing slowly, from 67 individuals in 1974 to 87 individuals in 2011, at a realized growth rate of 0.71% per year (see **Box 2-1**).

#### **Box 2-1.** Calculating growth rates.

It is important to distinguish the observed population changes (and thus the realized growth rate) from the expected growth rate  $\lambda$ .

The **realized growth rate** is simply the exponential rate of increase which, when applied for a series of years to an observed population abundance at the start of a time period, leads to the observed population abundance at the end of the time period.

$$RGR = \left( \frac{N_{t_2}}{N_{t_1}} \right)^{[1/(t_2-t_1)]}$$

Where:

RGR = Realized annual growth rate

$t_1$  = Start of time period over which RGR is estimated (e.g., 1974)

$t_2$  = End of time period over which RGR is estimated (e.g., 2011)

$N_{t_1}$  = Population abundance at time  $t_1$  (e.g., 67)

$N_{t_2}$  = Population abundance at time  $t_2$  (e.g., 87)

Converting RGR into an annual percentage growth rate is done as  $(RGR-1)*100$

**Lambda ( $\lambda$ )** is the growth rate that would be expected in the long term given a stable age distribution and a 50:50 sex ratio at first sighting. The observed population growth rate may be lower or higher than  $\lambda$  because of the interaction of sex ratio, random stochastic events and age structure (Caswell 1988).

In contrast to SRKW, NRKW have increased more rapidly over the same time interval, from 120 animals in 1975 to more than 260 currently. The trajectory of growth has been, for the most part, steadily positive over the last three decades. Increases in abundance were interrupted only briefly during the late 1990s and early 2000 when the population declined at a rate of one percent annually, a downturn that coincided with steeper declines in the abundance of SRKW.

The history of predominantly positive growth rates in SRKW would promote confidence about the future persistence of the population if the population were large. However, the relatively small size of the population raises concerns about its viability as a result of environmental and demographic effects exposing the population to risks of extinction. A key point, occasionally overlooked by participants in the first two workshops, is that the SRKW population is *not* declining. The population appears to be growing with some variation that can be attributed to expected annual fluctuations in vital rates characteristic of populations of vertebrates. Concerns about its future arise primarily from the current and recent size of the population and the potential impacts of future, unforeseen events on a population that lacks the resilience created by higher abundance. Moreover, there is serious concern about the future of the L pod, where demographic stochasticity has caused an imbalanced sex ratio such that there are more adult males than females, leading to a long period of declining abundance.

## 2.2 Key Questions

Understanding the current status of the SRKW population is a necessary starting point for any discussion of actions needed to improve its status. The Panel was asked to examine current knowledge of population size, growth rates, and demography of SRKW relative to NRKW (Northern Resident Killer Whales), to assess current trends relative to historical trends in abundance and to evaluate understanding of the current status of the population relative to recovery goals.

## 2.3 Responses to Key Questions

### Population Growth Rate

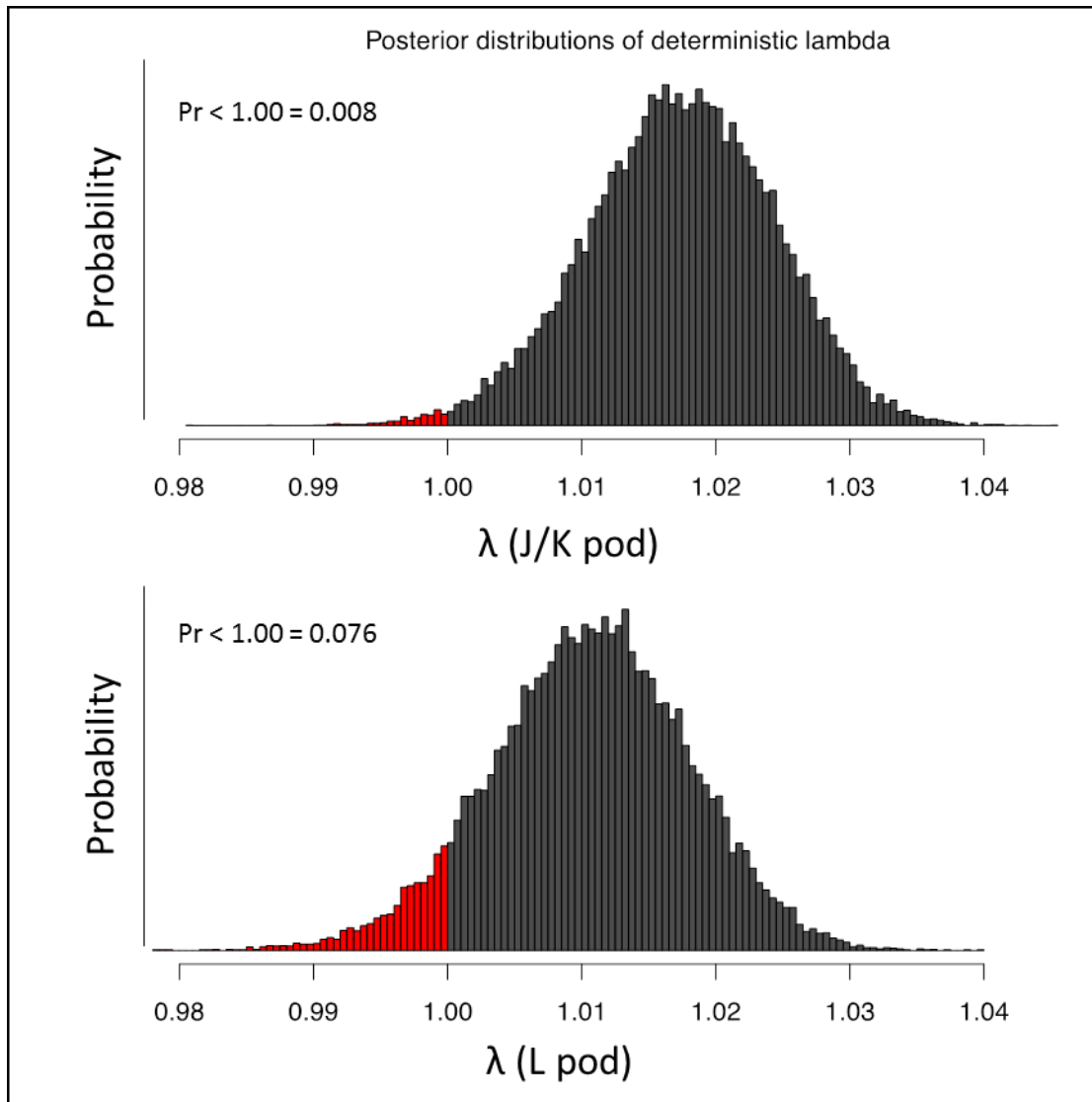
Observations of known individuals over an extended period of time allow estimation of vital rates of populations that are more accurate than those based on data lacking individual histories. Thus, the database used in the demographic analysis is a notable strength. The analyses conducted to infer population trends were state-of-the-art in their statistical and mathematical sophistication. The Panel finds little fault in the data or in their implementation in models of historic population dynamics.

Analysis of the long-term population growth rate (hereafter,  $\lambda$ ) of the population of SRKW from data obtained during 1970-2010 revealed reasonably strong evidence that the population is increasing (Ward and Barre 2012, Ward et al. 2012a). There were large differences in  $\lambda$  among pods, with J and K pods showing the strongest evidence of growth. The posterior distribution of  $\lambda$  for the L pod revealed that values for  $\lambda < 1$  cannot be ruled out (**Figure 2-1**).

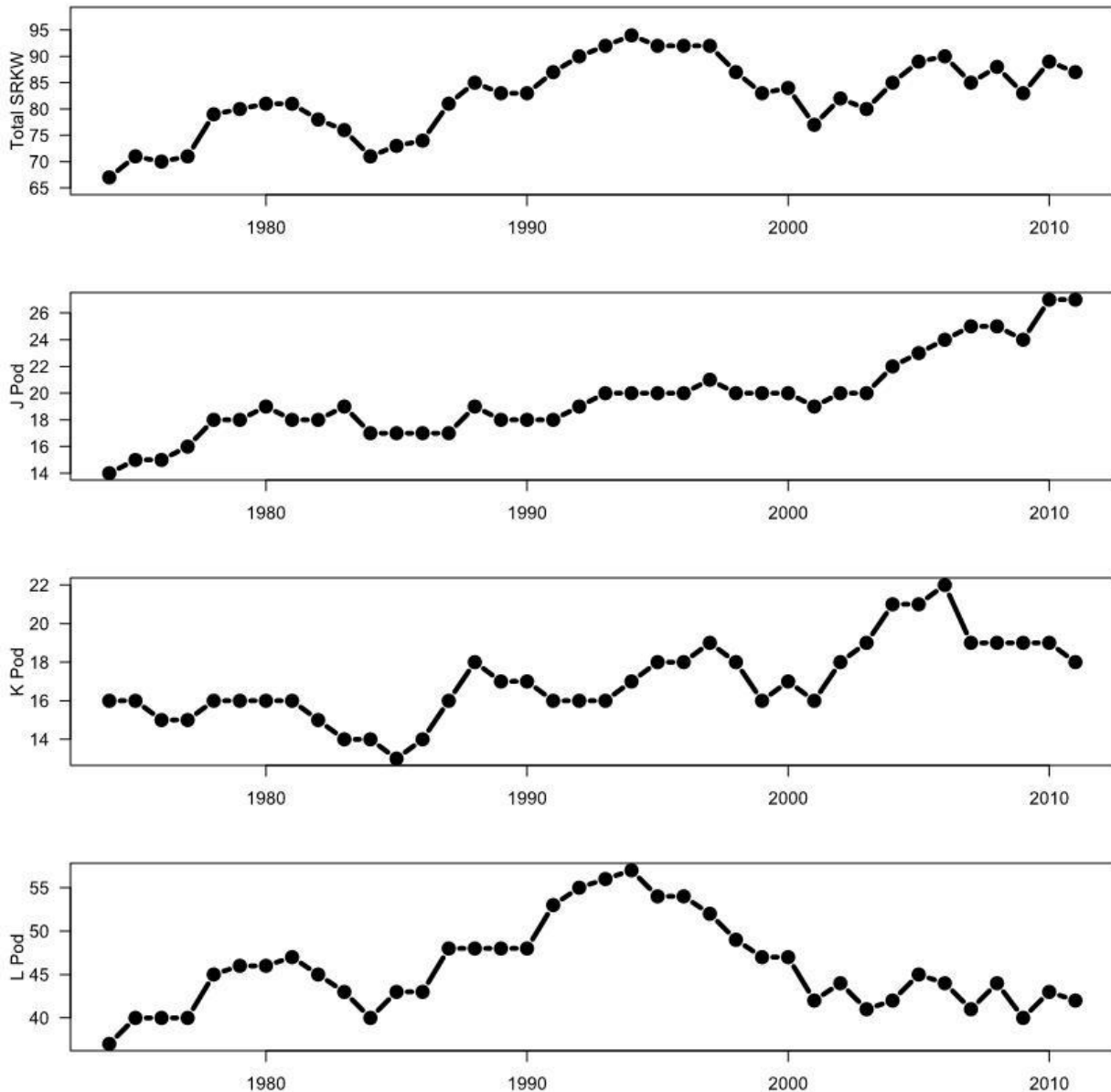
It is important to reconcile the mostly positive posterior distribution of  $\lambda$  for the L pod with the observation of declines in their numbers since the early 1990s (**Figure 2-2**). This can be explained by the way  $\lambda$  was calculated for the L pod. Because there were no significant differences in age-specific fecundities, these were pooled for use in the  $\lambda$  analysis for individual pods. Because age-specific survivals tended to be lower in the L pod than in the other two pods, the  $\lambda$  analysis applied different survival (i.e., lower) probabilities for the L pod. Thus, the difference in stage-specific survival rates would be responsible for the downward shift in distributions of  $\lambda$  for L pod compared to J and K pods, but the assumption that L pod age-specific fecundities were the same as for J and K pods would move the distribution of  $\lambda$  for L pod upward toward that for J and K pods.

The mean value of  $\lambda$  across J, K, and L pods was less than the recovery goal of 1.023. However, the distribution of possible  $\lambda$  values includes values that *exceeded* recovery goals, as well as values of  $\lambda$  less than one. The key result here is the uncertainty about the expected long-term population's growth rate. Analysis by Eric Ward following Workshop 3 indicated that this conclusion was not sensitive to the starting point of the time interval over which the growth rate was calculated.





**Figure 2-1.** Estimates of the posterior distribution of population growth rate. “ $\Pr < 1.00$ ” is the probability that  $\lambda < 1.00$  (the red area under the probability distribution), or the probability that the population may be experiencing a long term population decline. Source: Ward et al. 2012a.

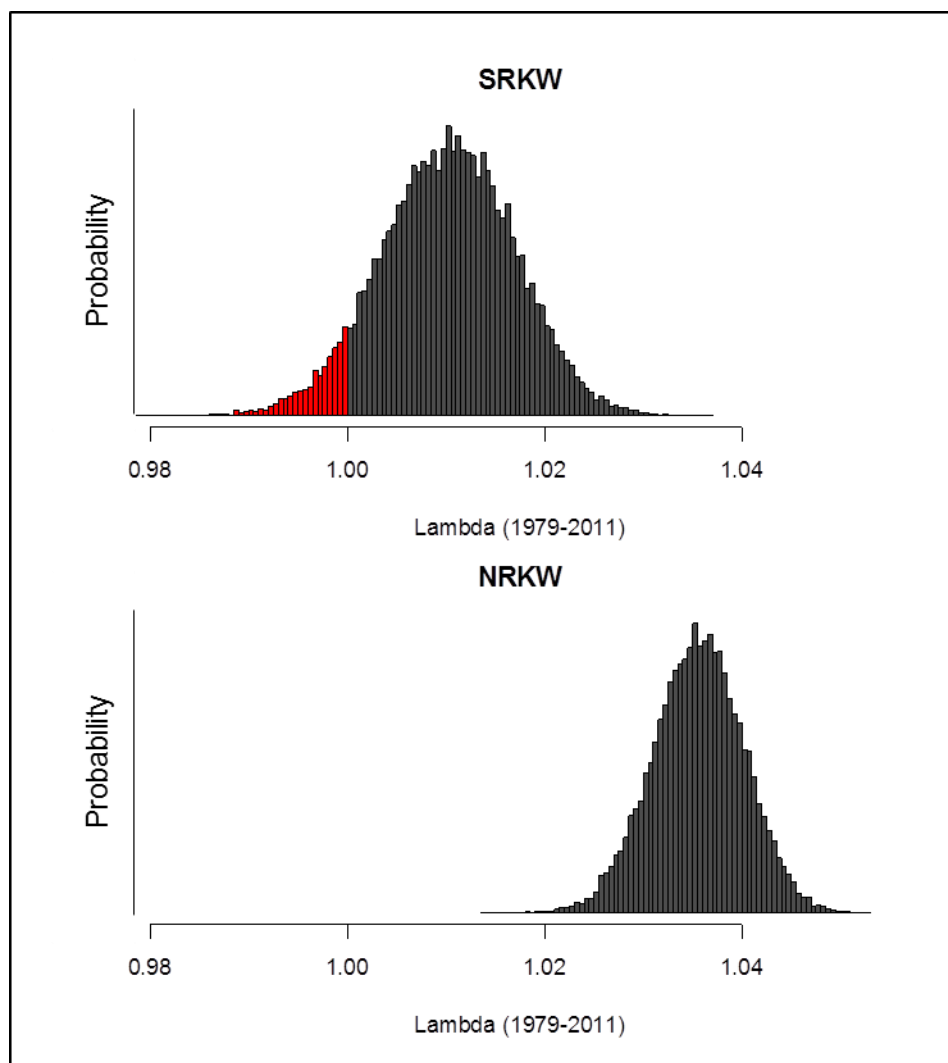


**Figure 2-2.** Observations of total population size for the entire SRKW population (top panel) and for each pod (bottom three panels). Source: Eric Ward email to the Panel, Sept. 20, 2012; updated Nov. 27, 2012)

The evidence that recovery goals may be met in the long-term results in part from the assumptions required by the analysis of  $\lambda$ . The  $\lambda$  analysis only applies to time scales of decades and applies only to populations at long-term equilibrium for sex and age composition (but not for abundance). What this means is that the estimate for  $\lambda$  depends on a mix of sexes and ages that would be expected on average over many years. The value of this approach is that it focuses on the long-term and does not respond to short term fluctuations in population composition. Short-term fluctuations may result from the randomness of the births and deaths, as well as the sex ratio. These fluctuations

can be particularly pronounced in small populations such as the SRKW. The estimated values of  $\lambda$  average out all these sources of randomness.

The long-term population growth rate ( $\lambda$ ) of SRKW is unambiguously lower than  $\lambda$  for NRKW (**Figure 2-3**). These differences in  $\lambda$  result from clear differences in vital rates; SRKW have lower fecundities and survival probabilities relative to NRKW. Life expectancy of females showed large regional effects (37.8 for SRKW vs. 44.9 for NRKW). Expected number of offspring also differs markedly between regions (3.1 for SRKW vs. 3.5 for NRKW). Regional differences in strength of density dependence could not account for the observed differences in population growth rates (Ward et al. 2012a, slide 59).



**Figure 2-3.** Posterior distributions of population growth rate for SRKW and NRKW. The top graph represents the average  $\lambda$  for J, K and L pods. Source: Ward et al. 2012a.

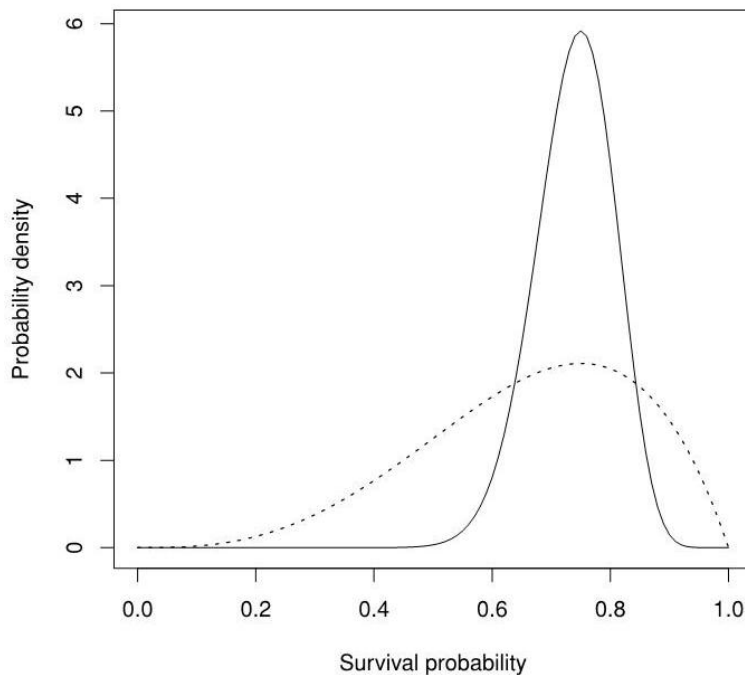
Vélez-Espino et al. (2012) presented an alternative demographic analysis that reached substantially different conclusions than those presented in the first two workshops, which are discussed above. In particular the estimate of  $\lambda$  was slightly less than 1.0 ( $\lambda = 0.99$ ) indicating that, on average, the

population was expected to decline, although the uncertainty in this estimate means that we almost surely cannot rule out positive growth rates. Moreover, the absence of any estimate of uncertainty in the Vélez-Espino et al. estimate means that we cannot know if it is meaningfully different from the Ward estimate.

The Panel concluded that aspects of the Vélez-Espino et al. analysis were problematic. His estimate of  $\lambda$  was not accompanied by any confidence envelope or distribution, making it difficult to evaluate uncertainty. The primary cause for the seeming difference between the two analyses appears to arise from the way that age-specific survival was estimated. The Vélez-Espino et al. method ignored information on the fates of individuals, which is a major strength of the data set. Instead, they

estimated survival for age class  $i$  as  $\frac{N_{i,t+1}}{N_{i,t}}$ . If the abundances were large, this would not be a

problem, especially considering that abundances are measured very accurately, except for sub-yearling calves. However, for small populations, such ratio estimators are not robust representations of population survival rates. For example, if during one year, there was a single death in an age class containing 4 individuals, then the ratio estimate of survival probability would be 0.75. By taking the means of these ratios, this highly uncertain estimate of survival (**Figure 2-4**, dashed line) would have the same weight in the overall population estimate of survival as 10 deaths out of 40 individuals. Although the two estimates have the same mean, the latter survival rate estimate is more precise (**Figure 2-4**), and should therefore get higher weight in the overall population estimate. The Bayesian approach presented by Ward et al. (2012a, 2012b) takes advantage of individual animal fates to achieve a proper weighting of information.



**Figure 2-4.** Bayesian posterior distributions for survival probability based on 1 death in 4 individuals (dashed line) and 10 deaths in 40 individuals (solid line).

Other issues that need investigation include the consequences of a stage-based model (Vélez-Espino et al. 2012) vs. an age-based model (Ward and Barre 2012, Ward et al. 2012a) and sensitivity to the choice of initial year for the time series of abundance.

It is the conclusion of the Panel that the Vélez-Espino et al. analysis offers alternative perspective. However, it is preliminary. It is the Panel's understanding that the co-authors of this presentation had not yet reviewed it when the material was presented to us. The analyses presented in the earlier workshops had been more thoroughly evaluated, for instance, with major components of these analysis have undergone independent peer review and publication (Ward et al. 2009, 2010b). Thus, the Panel conclusions and recommendations remain focused on the analyses of SRKW demographics, growth rates, and projections models from the Ward presentations (Ward and Barre 2012, Ward et al. 2012a).

### **Controls on Population Growth Rate**

Historic data provide insight into the factors that controlled the population dynamics of NRKW and SRKW. An exhaustive model selection exercise showed evidence for differences in fecundity between southern and northern populations (Ward 2012). The best-supported model included region and indices of salmon abundance as predictors of fecundity, but did not include a density effect. The effect of indices of salmon abundance did not depend on region--- the best model performed better than any model with an interaction term, suggesting fecundity of southern and northern populations responds in a similar way to the prey index. The second best model included male population density and region as predictors.

Models predicting survival from historic data were not easily interpreted (Ward 2012). There were three-way interactions among region, density dependence, and indices of salmon abundance, interactions that could not be understood biologically. Eliminating models with three-way interactions failed to clearly isolate factors controlling survival. The best model showed a negative relationship between female density and survival for NRKW and an inexplicable positive (although weak) relationship between female density and survival of SRKW. The next best model contained a similar response to salmon for NRKW and SRKW and female-based density dependence for both. However, the effect of density dependence varied by region. Effects of female density on survival were far weaker in the southern population relative to the northern population.

The results of analysis of historic data complicate the interpretation of the mechanism presumed to be responsible for the correlation between salmon abundance and killer whale vital rates. The textbook mechanism for bottom-up limitation of predators by prey is that reductions in prey abundance retard the per-capita rate of consumption of prey by predators via their functional response. Reductions in per-capita rate of prey capture, in turn, cause reductions in survival and/or fecundity, thereby reducing population growth via the numerical response. This chain of logic implies that there are *two* ways that the growth rate of predator populations can be increased: (1) by increasing the supply of prey or (2) by reducing the number of predators exploiting the prey. In both cases, per-capita rate of prey consumption should go up leading to enhanced fecundity and/or survival. If the classic mechanism prevails, then we should see support in predictive models of vital rates for effects of prey availability (i.e., the salmon indices, *and* the effect of killer whale density).

However, the effects of density for SRKW were difficult to interpret using the classical line of logic. It is not immediately clear why increases in male density should be more strongly associated with fecundity than increases in female or total density. The weak, positive relationship between SRKW females and survival is contrary to a mechanistic interpretation of functional response influencing the numerical response. The fact that density dependence was stronger in the northern population than in the southern population (Ward et al. 2012a, slide 59) suggests that the northern population should experience stronger bottom-up limitations as the population grows, a prediction that is contrary to observations. All of these difficulties of interpretation cast doubt on a simple, causal interpretation of the positive correlation between salmon abundance and SRKW vital rates. However, the Panel must also point out that the relatively narrow range of density during the period of analysis may mean that there was insufficient statistical sensitivity to detect effects of density.

### **Population Size and Demography**

Evidence for a positive growth rate in populations of SRKW suggests that the population should be increasing, but trends in abundance show little change in population size, particularly during the last decade. This raises the question, why has the population remained small despite a positive growth rate?

The answer to this question appears to come from demography. The K and L pods are each about 60% male which could be the result of demographic stochasticity in the sex ratio at birth and/or juvenile survival. A male dominated population would cause the population to grow more slowly than would be expected if the sex ratio of pods were 50/50 male/females. In contrast, the proportion of females in the Northern Resident population has been increasing recently and in some pods exceeds 60%. Differences in sex ratios between the southern and northern populations may therefore partially explain the differences in their rates of increase and in their abundance.

The primary cause for concern about the viability of SRKW is its small population size. This concern motivated the Panel to ask what is known about the historic size of the population. Demographic reconstruction showed that the largest known size was likely 96 animals in 1967 (Ford and Parsons 2012), leading to the conclusion that the population size has not varied dramatically over the last 45 years.

### **Synthesis**

Understanding the current state of the population of SRKW and the forces that have shaped the current state provides insight into the need to take action to alter the future trajectory of the population. There were two results from the analysis of current status that are particularly compelling. First, analysis of the long-term population growth rate emphasized the importance of properly estimating uncertainty. Although the estimate of the mean  $\lambda$  was strongly positive, the possibility of growth rates less than 1 cannot be ruled out, nor can we reject the idea that long-term growth rates will exceed recovery goals. Second, the absence of a clear negative feedback from population size to vital rates complicates the mechanistic interpretation of a positive correlation between vital rates and food supply. Classical theory in community ecology predicts that reductions

in the number of predators or increases in the number of prey should produce similar responses at the population level. This finding raises doubts about the cause and effect relationship between salmon abundance and killer whale vital rates.

## **2.4 Recommended Information and Analyses**

The Panel recommends that the analysis of Vélez-Espino et al. include estimates of uncertainty in  $\lambda$  and that the analysis undergo peer review.

## 3.0 FEEDING HABITS AND ENERGETIC NEEDS OF KILLER WHALES

### 3.1 Context

The apparent specialized diet of SRKW on Chinook salmon while in the southern entrance to the Salish Sea from May to September means that it is biologically plausible for reduced Chinook salmon abundance to cause nutritional stress and impede recovery of the SRKW population. Considerable research has been undertaken by NOAA, DFO, NGOs, and others to assess the mechanistic link between Chinook salmon abundance and the demographic dynamics of SRKW. This research has sought to determine whale distribution, diet composition, metabolic requirements, and indicators of nutritional stress—and explore whether salmon abundance is low enough to cause such stress in SRKW.

**Distribution.** J, K, and L pods typically feed in the inland waters of Washington State and British Columbia (Strait of Georgia, Strait of Juan de Fuca, and Puget Sound) from late spring to fall (Bigg 1982, Ford et al. 2000, Krahn et al. 2002). They are known to visit coastal sites off Washington and Vancouver Island (Ford et al. 2000, Krahn et al. 2004), and to travel as far north as Southeast Alaska (Chatham Strait), and as far south as central California. Winter and early spring movements and distributions are largely unknown—however, limited data from acoustic monitoring, photo-identification and contaminant signatures in blubber suggest some individuals spend substantial time in coastal waters off the coasts of Washington, Oregon and northern California (Krahn et al. 2002, 2009, Riera 2012).

**Diet (Species & Size Selectivity).** Limited dietary information based on identification of scales, tissues, and fecal DNA suggests that SRKW primarily consume large Chinook salmon from late spring to fall, and lesser amounts of chum salmon in fall (Ford and Ellis 2006, 2011, Ford et al. 2009, 2010b, Hanson et al. 2010a, 2010b, 2010c, Hanson 2011, Ford 2012a). Other salmonids (coho, steelhead, sockeye, and pink) and other non-salmonids (herring, rockfish) appear in diets occasionally. Stomach contents from a limited number of dead stranded resident whales have contained squid beaks (Ford et al. 1998), which suggests that other non-salmonid prey are occasionally ingested. Winter diets remain poorly described, but are believed to be more diverse than in summer and consist of smaller Chinook salmon and greater numbers of non-salmonids (ling cod, dover sole, and halibut) than observed during the summer and fall.

SRKW have strong preferences for larger-bodied organisms, which in the case of Chinook salmon, tend to be energetically denser than smaller prey. The age distribution of Chinook salmon consumed by SRKW does not match the age distribution of Chinook salmon thought to be available to killer whales (as predicted by the fisheries management model, FRAM; Ward et al. 2010a). Instead, SRKW consume greater proportions of the larger (older) fish (particularly the 4- and 5-year-olds) relative to the overall numbers of Chinook salmon present. They also seem to feed mainly on salmon bound for the Fraser River during the summer, and appear to take less of the Puget Sound Chinook salmon (Ford and Ellis 2006, Hanson et al. 2010a, Parken et al. 2011, Warheit



2012). Unfortunately little is known about diet and salmon selectivity during winter—an important uncertainty given the variation in energy density among Chinook salmon stocks and the need to understand energy intake and identify the critical Chinook salmon stocks SRKW rely upon.

**Daily Prey Requirements.** The amount of Chinook salmon required by SRKW was estimated by NOAA using a bioenergetics model (Noren 2011a, 2011b) for three time periods (October–April, May–June and July–September) based on the proportion of Chinook salmon in the diet, daily energy requirements and time spent by SRKW in inland waters. The stock-specific consumption for SRKW in the summer was also estimated (Hanson et al. 2011). DFO concurrently estimated the number of Chinook salmon needed by Resident killer whales using the Noren bioenergetics model (Ford et al. 2010b), while Williams et al. (2011) estimated SRKW Chinook salmon requirements under a range of scenarios using morphometric data from Icelandic whales and captive killer whales. All of the estimates of daily prey energy requirements are sensitive to the body size of the whales and the calorific content of the Chinook salmon—as well as the proportion of diet that is assumed to be Chinook salmon. Lactation is a significant energetic cost for females with calves, but does not contribute significantly to the estimated prey requirements of the overall population because few individuals are lactating at any one time.

**Nutritional Stress.** Photographs of thin whales and observations of the “peanut-head syndrome” (loss of the nuchal fat pad behind the skull) in SRKW suggest that a few individuals in some seasons are significantly emaciated. Such weight loss can arise from a variety of causes that range from malnutrition due to food shortage, to malnutrition secondary to infectious disease, parasitism or chronic degenerative processes. In wild mammals, the most commonly recognized cause of generalized weight loss is food shortage (e.g., King and Murphy 1985, Trites and Donnelly 2003, Schultner et al. 2012).

Body condition of marine mammals can range widely among individuals within a population, and social factors such as prey sharing may complicate identifying relationships between prey availability and nutritional status of an individual. Little is known about the factors that influence body condition of wild whales, although correlations between body shape and environmental conditions have been made for baleen whales, with one study indicating that weight loss behind the skull (“peanut head”) of gray whales (*Eschrichtius robustus*) is associated with lactation in adult females (Bradford et al. 2012), while another study concluded that body condition varies with the duration of the previous feeding season (Perryman et al. 2002).

The presence of emaciated whales in the SRKW population that have subsequently disappeared indicates that some individuals in poor condition may have experienced nutritional stress, although it remains unclear whether it is a seasonal and frequently occurring phenomenon in SRKW. It also remains unclear what caused the poor condition of these animals, and what the background rates of this syndrome are. A major challenge in interpreting data on the incidence of “peanut-head syndrome” or other indicators of nutritional stress is identifying the baseline against which to compare new observations because all wild populations encounter periods of nutritional stress. Poor condition and nutritional stress could contribute to increased mortality or reduced fecundity of SRKW through a variety of mechanisms (i.e., direct starvation, increased susceptibility to trauma due to increased foraging movements, decreased resistance to infectious disease, mobilization of

lipophilic toxic chemicals, etc.). Poor condition and nutritional stress could also decrease recruitment through changes in calving intervals and calf survival. Indicators of nutritional stress in individual whales include behavioral, morphological, hormonal, and reproductive changes that can be assessed with a variety of methods. However, prey sharing (documented to occur about three-quarters of the time; Ford and Ellis 2006) complicates understanding the effects of prey limitation on some individuals of the SRKW population, especially adult females that do more sharing.

The effect of prey sharing on the association between food limitation and body condition could accentuate individual differences in body condition if animals continue to share prey at the expense of their own loss of condition and allow the receiving individual to gain weight. Conversely, prey sharing could mask individual differences in body condition if more successful animals that are in better condition share prey with thinner individuals. Thus, the influence of food availability on the social structure of resident killer whales (Foster et al. 2012) confounds the relationship between food availability and nutritional condition among individuals and complicates making simple conclusions about the causes of any changes observed in the body condition of SRKW.

### **3.2 Key Questions**

Diet composition, foraging distributions and metabolic requirements of SRKW outside of the summer months are not well described because these data are difficult to obtain and have been gathered opportunistically rather than collected following a statistical design. Considerable effort has been directed towards determining diet composition and selectivity, particularly on Chinook salmon. The Panel was asked whether the approaches and methods used to estimate diet composition and selectivity were scientifically reasonable and whether these techniques could be improved. The Panel was also asked to assess the conclusion that SRKW eat mostly Chinook salmon during the summer and fall in the Salish Sea.

In terms of the prey requirements of SRKW, the Panel was asked to assess whether the bioenergetics modeling approach used to estimate energy needs was a scientifically defensible approach and whether there were additional refinements that could be made to improve these estimates of predatory demand on Chinook salmon in the Salish Sea. The Panel was also asked to evaluate whether ratios of energy needed by SRKW to the energy available from Chinook salmon in the Salish Sea were a reasonable and defensible way to assess the adequacy of Chinook salmon stocks for sustaining and rebuilding SRKW.

Finally, the Panel addressed whether behavioral, hormonal, or estimates of body condition were useful metrics for assessing nutritional stress in SRKW relative to seasonal and inter-annual variation in prey availability.

### 3.3 Responses to Key Questions

#### Diets of Southern Resident Killer Whales

Diets of SRKW have been determined from scales and tissue recovered from salmonid prey that are broken up near the surface for sharing among individuals. Diets have also been determined from the stomach contents of dead whales, and from the prey DNA in fecal samples. These quantitative molecular methods used on individual samples are solid and state of the art. However, collecting samples is difficult and the descriptions of diet are not necessarily representative of the entire population given the concentration of effort in the summer through autumn months, with little or no coverage in the winter months. Furthermore, biases associated with likelihood of prey being shared, digestibility of prey and amount of DNA per sample will influence results. The Panel believes that, despite the logistical challenges of collecting diet samples, the existing data offer a reasonable indication of summer diets of SRKW in the Salish Sea.

The winter ecology of SRKW after leaving the Salish Sea differs from their summer ecology, but there is little information about diet composition and selectivity in winter months. Given the general absence of the whales from the Salish Sea in winter, they are less likely to consume significant amounts of Fraser River salmon. However, winter diet composition is a major source of uncertainty in understanding the foraging ecology of SRKW.

The majority of dietary data show that SRKW and NRKW have a preference for salmon, particularly large Chinook salmon which appear to account for >80% of the diet from May–September. The general conclusion that SRKW consume primarily large Chinook salmon (4- and 5-year-olds) is reasonable and supported by the available information. It is conceivable that smaller Chinook salmon may not be shared as readily and could be swallowed whole without much handling—a factor that could bias detecting the presence of Chinook salmon in the diet from tissue and scale data (Hanson 2011). Fecal DNA samples can detect the presence and proportions of Chinook consumed, but cannot provide information about their sizes. Some groundfish could also be swallowed at depth without being brought to the surface, and would not be detected by scale and tissue sampling. Fecal DNA testing can overcome this potential sampling bias (although digestion may obscure the passage of DNA from some prey species).

The samples obtained in Puget Sound during early winter (October–December) suggest a greater reliance by SRKW on chum salmon and on demersal species during winter, although 24 samples collected in coastal waters indicate a predominance of Chinook salmon in the diet (Hanson 2011). The paucity of winter diet data outside of Puget Sound limits the ability to assess the degree to which SRKW rely on chum salmon, smaller Chinook salmon, or other fish species during this potentially challenging time of year.

Biopsy samples from some individual SRKW give indirect information about diet for a small number of years. Limited data on nitrogen stable isotope ratios in skin samples suggest that L pod may have changed its dietary trophic level over the last decade (O'Neill et al. 2012a). The isotope ratios also suggest that the diet trophic level of K pod varies seasonally. Fingerprints of lipophilic contaminants in blubber biopsies also provide insight into diets. Ratios of these contaminants

found in the blubber of K and L pod match with similar ratios of prey species in California as indicated by the relatively high concentrations of DDT, suggesting that fish from California form a significant component of their diets (Krahn et al. 2007, 2009, O'Neill et al. 2012b).

Though logistically challenging, future research on diets of SRKW should expand seasonally and include winter surveys, ideally reflecting temporal and spatial distribution of the whales. Further refinement of the currently employed methodologies and sampling designs are likely to show a more complex and diverse diet related to age, sex, pod and time of year than presently recognized. However, further diet studies are unlikely to change the fundamental finding to date that Chinook salmon are the most important component of the SRKW diet. Instead, they should provide data needed to determine whether SRKW can adapt alternative foraging strategies during times when Chinook salmon are rare by consuming alternate prey at rates that do not compromise their fitness, or by moving outside of the Salish Sea to consume other stocks of Chinook salmon (Hanson et al. 2012).

Diet analysis that determines the frequency with which species of prey occur in stomachs or fecal samples requires ~70 samples by season to accurately describe diet (Trites and Joy 2005). A sampling design should be implemented with a coordinated effort to collect the necessary numbers of samples. Additional insights into diets of SRKW can be obtained from killer whale blubber and skin samples through analysis of contaminant ratios, stable isotopes and fatty acid composition. Direct observation of predation by SRKW relative to potential prey sources also contributes useful information about diets and preferences.

### **Energy Needs of Southern Resident Killer Whales**

The modeling approach used to estimate the food requirements of SRKW is sound and consistent with the models that have been developed for other species of marine mammals. It yields reasonable estimates of energy needs, although there is considerable uncertainty due to uncertainty in some of the parameter estimates and assumptions made. The estimated energy requirements of SRKW have been derived using the best available data, and can only be refined by incorporating better parameter estimates for such variables as body mass at age, activity, seasonal changes in body condition, and basal metabolic rates. Such model refinements will come with time and will improve confidence in the estimates of energy needs. Nevertheless, the numbers of fish that NOAA and DFO estimate that SRKW require are within reasonable limits.

In addition to refining model parameter estimates, seasonal variability in energy requirements is a key uncertainty that still needs to be addressed. Photogrammetry data could be used to determine whether seasonal changes in body condition occur (as suggested by seasonal changes in fecal hormones; Ayres et al. 2012). Additional photogrammetry data would contribute to determining whether there is a relationship between body condition and seasonal changes in energy requirements due to differences in reproductive stage, movements and daily activity budgets. It would also contribute to identifying possible mismatches in seasonal prey availability with seasonal energy requirements that could have significant physiological effects on fecundity or susceptibility to disease. Photogrammetry data could also be used to investigate body condition changes in years of high versus low Chinook salmon abundance.

Photogrammetry appears to be a promising technique to detect changes in body shape (Durban et al. 2009, 2012), and could be further refined using captive killer whales. A systematic use of photogrammetry to evaluate seasonal and annual changes in individual whale body condition can provide key data to assess the nutritional status of SRKW relative to population recovery. However, this use of photogrammetry assumes that changes in condition can be causally linked to changes in individual reproductive success and survival.

### **Ratios of Energy Needs to Energy Available**

The ratios of energy needed by SRKW to the energy available to them from Chinook salmon are not particularly useful for understanding whether fisheries for Chinook salmon affect the population dynamics of SRKW. Simply put—there is no objective means to evaluate the biological significance of the ratios on the status of SRKW. The forage ratios therefore provide little insight into possible prey limitations faced by SRKW, and require knowing whale fitness or vital rates as a function of the supply-to-demand ratios to be useful. The ratio cannot be interpreted without having such a functional response (unless it is  $< 1$  and clearly indicative of a prey deficiency).

Comparisons between the SRKW and other apex predators in other ecosystems are also not well justified, and are again difficult or impossible to interpret without knowing what demands are placed on Chinook salmon (or any prey) by the entire community of predators that feed on them (the predator demand component of the ratio). It is possible, for example, that killer whales consume a larger component of the Salish Sea Chinook salmon stocks because the Salish Sea is home to fewer other important apex predators compared to other ecosystems.

Calculating ratios does not appear to provide any meaningful information about either the ecosystem or the biology of SRKW. Continuing to undertake this analysis is not warranted. Such analyses might provide some insights into the ecology of the Salish Sea ecosystem if directly comparable models are generated for other species in the Salish Sea or other ecosystems (i.e., same assumptions, taxonomic resolution, etc.). The calculated ratios (Noren 2011b, Williams et al. 2011) have been derived from many disparate models with very different assumptions.

### **Nutritional Stress**

The available information on body condition of individual SRKW (Durban et al. 2009, 2012) documented 13 members of the SRKW population in poor condition using boat-based photographs obtained from May–September over the period 1994 through 2008. All but two of those individuals subsequently died. None of the individuals that died were recovered and examined, so definitive date and cause of death are unknown. However the implication from these data is that some SRKW have been nutritionally limited at certain times of year.

The data available on fecal hormone levels are not clearly indicative of nutritional stress in the SRKW population. Measurements of fecal hormones can give valuable insight into the physiological status of individual animals and populations. Triiodothyronine (T3) and corticosterone concentrations in fecal samples collected over three years from killer whales from all three SRKW pods suggest seasonal changes occur in fecal T3, with a decline in values from spring through

summer to fall (Ayres et al. 2012). This change could be explained by changes in photoperiod, as well as by individual differences in nutritional status, age, sex, reproductive status, stress and PCB exposure of individuals sampled (St. Aubin and Geraci 1988, 1989, Fair et al. 2011, Schwacke et al. 2012). Changes in photoperiod are major drivers of thyroid gland function (Walton et al. 2011), which is consistent with the reported linear response of T3 in the SRKW to Julian date (Ayres et al. 2012). Unfortunately, the lack of fecal hormone data in winter months due to logistical difficulties associated with sample collections limit the interpretation of the available fecal hormone data to assess the nutritional status of the SRKW.

Although nutritional status can influence fecal thyroid hormone levels, other factors such as age, activity, day length, water temperature, reproductive status and contaminant exposure also affect fecal hormone levels (Oki and Atkinson 2004, Ciloglu et al. 2005, Ross et al. 2007, Fair et al. 2011). It is thus uncertain whether the seasonal change reported in fecal thyroid hormone levels indicates nutritional stress or a seasonal endocrine shift associated with other factors.

Cortisol levels are indicative of activation of a stress response, which is a common physiological pathway that results from any stressor (in addition to nutrition) such as sound, boat traffic, or conspecific aggression. Use of fecal cortisol alone as an indicator of nutritional stress is therefore limited in an environment with considerable human activity.

Social behavior and group sizes may also be altered by changes in nutritional status and the availability of prey (Lusseau et al. 2004). Low availability of Chinook salmon and a long-term reduction in returning stocks of Chinook salmon appear to have reduced social cohesion in SRKW (Parsons et al. 2009) and increased movements of SRKW in the San Juan Islands (McCluskey 2006). Changes in social behavior may thus be more sensitive indicators of nutritional limitation than changes in fecundity or survival for SRKW.

## **3.4 Recommended Information and Analyses**

### **Diet Analysis**

A shortage of samples during winter is the biggest gap in diet studies of SRKW. Increased effort is needed to obtain winter samples (November–May). One approach is to satellite track tagged individuals to determine where fecal, tissue and scale samples can be collected. However, this is logistically difficult and can impact the behavior of individual animals that are tagged.

A second limitation of current understanding of killer whale diets is that tissues and scales recovered in the water column after food sharing are likely biased towards salmonids. More fecal sampling is therefore needed to detect the prevalence of non-salmonids, and determine the extent to which tissue and scale sampling might be biased by prey sharing. The utility of fecal sampling could also be evaluated by feeding known prey to killer whales in aquaria and collecting and analyzing their fecal DNA.

A third recommendation is to continue archiving fecal and blubber samples from future stranded animals in addition to stomach contents. Dietary analysis of these samples can be compared with

those obtained from stomach content analysis. The full thickness of the blubber should also be archived for future dietary analyses using fatty acids.

Finally, more effort could be expended on contaminant fingerprinting techniques that hold substantial promise for improving estimates of SRKW diets and identifying likely feeding locations based on the similarity between their contaminant fingerprints and the fingerprints of their available prey.

### **Energetic Needs**

Satellite tagging of whales in winter and continued acoustic monitoring outside the Salish Sea is needed to identify winter foraging areas and estimate the range of movements to determine activity budgets and better estimate the prey requirements of SRKW. In addition, future analysis of foraging behaviors is needed to detect potential changes in activity budgets (proportion of time spent foraging, socializing, resting, and travelling), movement patterns (frequency and duration of excursions outside of regular feeding areas), dispersion (spreading out if prey density is low), foraging success (lower catch per unit effort when prey availability is low), and prey switching (increased predation on alternative prey if Chinook salmon density is low). However, interpreting changes in behavioral patterns as simple indications of nutritional (or other) stresses will be a continual challenge.

### **Nutritional Status**

Overall, the Panel believes that increased use of photogrammetry to monitor seasonal and inter-annual changes in growth and body condition of SRKW is likely to yield the greatest number of new insights into the foraging ecology of SRKW. Research designed to monitor nutritional status of SRKW should focus on refining and evaluating current photogrammetry methods (e.g., Durban et al. 2009, Fearnbach et al. 2011) to evaluate the utility of different morphometric indices as measures of nutritional status. Research should also undertake longitudinal sampling to investigate seasonal changes in body condition of individuals, and at-risk age- and sex-classes. In addition, analysis of individual calving intervals, group sizes, and association strengths should be assessed as measures of relative feeding conditions. Changes in social cohesion may be a sensitive indicator of nutritional stress in SRKW (Foster et al. 2012). Photogrammetric surveys should be coordinated with biopsy sampling to enable comparisons with the more direct measures of nutritional status.

## **4.0 FISHERIES AND PREY AVAILABILITY**

### **4.1 Context**

The Panel was asked to evaluate the available information and analyses concerning abundance and distribution of Chinook salmon, distribution of SRKW, and how fisheries may affect the availability of Chinook salmon to SRKW in their summer critical habitat and in coastal waters where SRKW are found during other months. The Panel was also asked to assess the possible increases in ocean abundance of Chinook salmon that might result if ocean and/or freshwater fisheries were closed and/or modified. The Panel does not pass judgment, in this section, on the issue of whether or not possible increases in ocean abundance would materially increase the probability or speed of recovery of SRKW.

#### **Historic vs. Current Abundances and Marine Distribution of Chinook Salmon: The “Big Picture”**

Myers (2011) presented “back of the envelope” calculations (based on cannery records and various assumptions regarding relationships between numbers of fish processed and cannery records) of historic (1890-1920) abundances of Chinook salmon in the mainland US, coastal British Columbia and the Fraser River. These estimates suggest that historic abundances were dominated by fish from the Columbia River (4.6 million), California’s Central Valley (1.1 million), and Coastal British Columbia stocks (Skeena + “Outlying Area” = 1.2 million), with the Fraser River (0.55 million) and Puget Sound (0.69 million) making substantial contributions as well.

Contemporary abundances of Chinook salmon in the Pacific Northwest and California have been greatly reduced from these historic abundances and many Evolutionarily Significant Units (ESUs) of Chinook salmon are listed as threatened or endangered under the US Endangered Species Act and many British Columbia stocks have been identified as of stocks of conservation concern. (Indeed, one wonders if recovery of some of these Chinook salmon populations is limited by killer whales and increasing populations of harbor seals and sea lions (Lessard et al. 2005).) As noted by Myers, declines in spring-run fish have been dramatic in many river systems, in part because the historic spawning grounds of these fish are today often above impassable dams. Declines in abundance of spring-run fish have been particularly evident in California’s Central Valley, in the Columbia River (interior spring Chinook salmon) and in Puget Sound. Coastal British Columbia populations from the Skeena and “Outlying Areas” have experienced declines in abundance and declines in abundance have been alarming in southern British Columbia.

Associated with the declines in abundance have also been shifts in age structure of many populations toward younger age and smaller adults. Such shifts have ranged from fairly modest (e.g., Willamette River spring-run) to quite striking (e.g., California’s Central Valley). In many of today’s Chinook salmon populations (including those from California’s Central Valley, see Myers 2011, slide 13), age-5 adults are rare and age-6 fish are virtually nonexistent, though historical



records from the same populations indicate that age-5 fish were common and age-6 were regularly present<sup>2</sup>.

Recoveries of coded-wire tagged (CWT) hatchery Chinook salmon in ocean fisheries have provided strong evidence that marine distributions vary substantially according to stock of origin. Early analyses of CWT recoveries from California and Oregon coastal stocks suggested that Chinook salmon stocks south of Oregon's Cape Blanco are "south-migrating" fish that are captured almost entirely from central Oregon through central California (Nicholas and Hankin 1988). Northern Oregon Coastal stocks, and most late-maturing Columbia River fall Chinook salmon stocks are "far north-migrating" and are captured in ocean fisheries in "outside coastal waters" off Washington, British Columbia and Alaska. More recent and more extensive analyses of CWT recovery patterns for Chinook salmon stocks (Weitkamp 2010) have revealed a dozen distinctive patterns of ocean recoveries which appear related primarily to the geographic area from which stocks originate. One interesting generalization for north-migrating stocks is that older fish tend to be caught further north from their river of origin than younger fish. Although most Chinook salmon stocks seem to have relatively nearshore coastal distributions that make them highly vulnerable to ocean troll fisheries, stream-type spring-run Chinook salmon from the Interior Columbia system and from the Fraser system appear to have a non-coastal ocean distribution (Myers 2011). Marine fishery impacts on such spring Chinook salmon stocks are very minor and availability to killer whales would be largely limited to terminal areas as mature fish.

### **Recent Trends in Chinook Salmon Abundance and Fisheries**

Kope and Parken (2011) summarized trends in abundance and fishery catches of Chinook salmon for various aggregates for the period 1979 to the present. The period begins with the first years of fisheries regulated under the 1976 US Fisheries Conservation & Management Act which established the Pacific Fisheries Management Council, and also is a period of time during which fisheries managers have relied very heavily on recoveries of coded-wire tagged hatchery fish to serve as indicators of exploitation history for many natural-origin Chinook salmon stocks. Comparing averages for 2001-2010 with those for 1979-1988 and considering stocks of likely importance to the SRKW, Kope noted that: (1) Fraser Early Chinook salmon total abundance (terminal run + fishery impacts) has increased by about 36%, and terminal run size has increased by more than 100%; (2) West Coast Vancouver Island aggregate total abundance has decreased by 35%, but terminal run sizes have increased by about 19%; (3) Fraser Late Chinook salmon total abundance has decreased by about 51%, but terminal run size has increased by about 38%; and (4) Puget

---

<sup>2</sup> Throughout this section, we denote ages of Chinook salmon in total years, equivalent to a tacit assumption that the vast majority of Chinook salmon stocks that may be available to SRKW are ocean type Chinook salmon for which juveniles outmigrate as sub-yearlings. We recognize, of course, that some important Chinook salmon stocks have primarily yearling smolts and that size and maturity at total age is different for these stocks than for ocean type stocks with sub-yearling smolts. Most such stream type stocks are spring race Chinook salmon which, as noted below for upper Columbia stocks, typically have little availability to ocean fisheries and would therefore presumably have little availability to SRKW in coastal waters. These stocks would be available to SRKW only when they passed by foraging whales on their return to spawning streams as mature fish.

Sound total abundance has decreased by about 38%, but terminal run size has not changed. Coast-wide, Kope noted an approximate 16% decrease in total Chinook salmon abundance, but a concurrent 37% increase in ocean escapement to terminal areas. These shifts toward larger terminal run sizes reflect changes in management policies that have responded to: (a) unacceptably high ocean fishery exploitation rates on certain Chinook salmon stocks<sup>3</sup>; (b) legal requirements for catch sharing of certain stocks between ocean fisheries and terminal net fisheries (Native American and First Nations fishing rights); and (c) weak stock management policies designed to improve conservation status of ESA-listed populations of Chinook salmon (US) or DFO-identified stocks of concern (Canada). Long (WDFW; 2011) provided a very detailed review of substantial reductions in marine fisheries catches that have taken place in the immediate vicinity of the summer feeding area of the SRKW (i.e., in the Strait of Juan de Fuca and around the San Juan Islands).

Van Will and Adicks (2011) summarized recent changes in abundance and fisheries for other salmon species that are present in diets of SRKW, though at lower prevalence (chum salmon) or very low prevalence (coho salmon, sockeye salmon, steelhead trout). Aggregate escapement of “inside southern chum” (a British Columbia group which moves between Vancouver Island and the mainland) has averaged about 3.5 million (catch + escapement), with an apparent increasing trend from 1965 through 1999. Puget Sound fall chum enter the eastern Strait of Juan de Fuca and Puget Sound during September through December and are the most abundant run type (average run size of 1-2 million). Abundance of these fish has generally increased over the period 1968 through 2009.

LaVoy (2011) presented a FRAM-based analysis of possible increases in kilocalories of Chinook salmon that might be generated from various levels of fishery closures, and Hagen-Breaux (WDFW; 2012) presented a simplified assessment of the probable effects of fishery closures on total abundance (numbers) of mature age-4 and age-5 Chinook salmon from “inland stocks” (Puget Sound + Fraser early run, Fraser late run, Lower Georgia Strait stocks). When all ocean fisheries for Chinook salmon (Puget Sound, all US + Canadian) were closed, average increases in Chinook salmon abundance were about 20% for all inland stocks combined, with increases to Fraser stocks of about 15%, but with only about 3.5% increase in Puget Sound Chinook salmon.

### **Geographic Distribution of SRKW and Probable Overlap in Distribution with Chinook Salmon Stocks.**

Barre (2011) gave an overview of the NOAA Recovery Program for the SRKW, indicating that the range of this population extended from the Queen Charlotte Islands in British Columbia to central California, with the San Juan Islands in Puget Sound being a May–September “hot spot”. Designated Critical Habitat (under the ESA) for the SRKW was defined as the US side of the Strait of Juan de Fuca, Puget Sound, and regions around the San Juan Islands to the Canadian border, and similar Critical Habitat has been defined in Canada under SARA. Hansen and Emmons (2011) summarized

---

<sup>3</sup> Throughout this report, we use the term “ocean fishery exploitation rate” to mean the probability that an age *i* salmon, present in the ocean when the ocean fishing season begins, is harvested in the ocean at age *i*. For Chinook salmon, ocean fishery exploitation rates on age-2 fish are generally close to zero and exploitation rates for age-3 fish are usually about 50%-75% of those for age-4 and older fish.)

characterizations of the geographic distribution of SRKW based on available sightings data, with a focus on time spent in critical habitat during summer and fall months, and provided an initial summary of findings from passive acoustic recorders that allow identification of SRKW vs. NRKW by vocalizations. Ford (2012b) presented evidence that the winter distribution of SRKW (L pod) may range as far north as Pt. Ellis, Alaska, about 275 km north of the Queen Charlottes. Ford et al. (2012) presented a more complete review of information on SRKW geographic distribution, including summaries of whale detections from the coastal sighting network (CWR) and DFO as well as from NMFS passive acoustic recorders that have been deployed at various locations off the coasts of Washington, Oregon and California. Ford et al.'s presentation suggested that SRKW are found almost exclusively in the Salish Sea and/or in coastal waters near the entrance to the Strait of Juan de Fuca during the July–September period (Ford et al. 2012). During the April–June period, only about 32% of SRKW sightings have been in the critical habitat area with remaining sightings primarily in coastal waters off northern Oregon and Washington and outside waters of Vancouver Island. During late fall (October–December) relatively few sightings (19%) have been from the critical habitat area and during winter months (January–March) almost no sightings (4%) have been made in the critical habitat area. During winter months SRKW are sometimes distributed off of central California, though more frequently they seem found off the Washington coast.

Ford et al. (2012) also presented some conjectures concerning the overlap in the geographic distribution of SRKW and Chinook salmon stocks, based on a comparison between Weitkamp's (2010) CWT-based assessment of Chinook salmon distribution patterns and available information concerning geographic distribution of SRKW. Ford et al. (2012) concluded that SRKW distribution overlaps with "all major stocks from south of central BC" during the April–December period, although certainly degree of overlap would be stock-dependent, being much less for California Chinook salmon stocks, for example, than for Washington coastal stocks. Available data concerning winter (January–March) distribution of Chinook salmon are inadequate (due to fishery closures during this period) to allow assessment of winter distribution patterns of Chinook salmon and data on winter distribution of SRKW are also limited, so it is not possible to reliably assess the possible degree of overlap of SRKW and Chinook salmon during this period.

## 4.2 General Comments

There is no question that contemporary abundance of Chinook salmon in the Pacific Northwest is small compared to historic abundance, with greatest reductions in abundance for spring-run Chinook salmon from the Columbia River system. According to Kope and Parken (2011), however, changes in coast-wide abundance of Chinook salmon populations over the past 30 years, the period of time over which status of SRKW has been closely monitored, have been relatively modest: an approximate 16% decline in total abundance, but with a corresponding substantial 37% increase in terminal abundance (returns to freshwater) due to increased restrictions on marine fishery harvests.

There seems no question that during the summer period (July–September), when the SRKW spend almost all of their time in the areas that have been designated as Critical Habitat, the SRKW population must be foraging primarily on maturing Chinook salmon that are entering the Strait of

Juan de Fuca or Georgia Strait on their return to freshwater streams of origin, primarily streams that enter Puget Sound and the Fraser River. Therefore, during the summer period it seems fairly clear that a rather limited set of Chinook salmon stocks would be directly exposed to predation by the SRKW, that mostly mature (rather than immature) individuals from these stocks would be available, and that only fisheries that impacted these specific stocks would affect prey availability during the summer period<sup>4</sup>. Warheit (2012) presented evidence that the genetic composition of the Puget Sound recreational Chinook salmon fishery was dominated by Puget Sound Chinook salmon, in contrast to diet of SRKW which was dominated by Fraser River fish. Careful inspection of the distribution of recreational fishermen as compared to foraging SRKW suggests that extensive foraging on Fraser Chinook salmon is a consequence of the coincident geographic locations of foraging SRKW and the frequent migration path of Fraser Chinook salmon through Haro Strait. If the summer period were the critical foraging period for SRKW, these observations would strongly argue for exploration of a possible link between SRKW performance attributes (net reproductive rates, survival rates) and terminal run size (i.e., mature fish only) of a very limited number of relatively well-identified Chinook salmon populations, mostly of Fraser River origin.

If instead SRKW rely primarily on Chinook salmon during the winter period and if the winter period is the critical period with respect to energetic needs, with the possibility of poor condition leading to increased death rates or decreased fecundity, then one might instead argue that SRKW vital rates should be related to some larger and likely complex aggregate of the abundances of many different Chinook salmon stocks from at least northern Oregon through southern British Columbia. The extent to which SRKW depend on Chinook salmon during the winter period is poorly identified, however, as are the geographic and temporal distributions of both Chinook salmon and SRKW during the winter period. It does seem clear that the SRKW are more often found in coastal areas (e.g., Washington coast) than in the designated critical habitat during the winter months, but existing winter distribution data also suggest substantial inter-annual variability in geographic distribution. It does seem reasonable to believe that Chinook salmon populations with ocean distributions typically north of the most northern detections of SRKW would be ruled out as important contributors to SRKW diet and that southern Oregon and California Chinook salmon populations would not be of importance except during those years when SRKW moved to southern Oregon or California waters during winter. Weitkamp (2010) provides a helpful guide for conjectures regarding stocks likely to have substantial winter overlap with SRKW, but little confidence could be placed in such conjectures due to poor winter distribution information for both SRKW and Chinook salmon stocks.

---

<sup>4</sup> Based on genetic analysis of SRKW feces and scale samples collected from kills during summer months (Hanson 2011), it seems clear that Fraser River stocks dominate SRKW Chinook salmon consumption during summer months, with Fraser spring stocks most important during May and June.

## 4.3 Key Questions and Responses

### **1) Do any parts of these data need further clarification?**

#### ***Chinook salmon abundance indices and their use in assessing influence of Chinook salmon abundance on SRKW vital rates.***

In the Panel's report following Workshop 1, substantial attention was devoted to: (a) discrepancies between estimates of Chinook salmon abundance generated using the FRAM model and the CTC-generated abundance indices for stock aggregates; (b) inconsistencies in statistical inferences concerning the effects of Chinook salmon abundance on SRKW "fecundity" (net reproductive rates) and survival rates based on the two alternative abundance indicators; and (c) concerns relating to whether Chinook salmon available to killer whales were generally mature/maturing as compared to immature fish. The Panel also expressed concerns about how selectivity functions had been developed and used to account for the apparent preference of killer whales for larger and older Chinook salmon.

These initial Panel concerns were prompted by an implicit (and possibly incorrect) initial supposition that SRKW foraging during the summer period was of primary concern and interest. Given the consistent findings that SRKW foraged extensively in the designated critical habitat during summer and early fall months and primarily consumed Chinook salmon during this period, and assuming that successful foraging during summer months was critical to the survival and fecundity of SRKW, it was natural to devote attention to which of the two abundance indexes (CTC or FRAM) might be better suited for allowing identification of the abundance of mature Chinook salmon from a relatively small number of stocks that would contribute to summer diet of SRKW (those passing by the critical habitat on return to their spawning grounds as mature fish).

Following Workshop 1, there was substantial response to the Panel's concerns regarding the FRAM and CTC indicators of Chinook salmon abundance and Workshop 2 provided Panel members with an improved ability to interpret these abundance indices and to assess their possible use for representation of Chinook salmon available to SRKW. Several presentations were made at Workshop 2 that clarified the key assumptions and limitations of three abundance indices: FRAM, CTC, and a new Kope-Parken index. Specifically, Ward and co-authors presented revised logistic regression analyses relating the Kope-Parken run reconstruction-based measures of terminal run size and total ocean abundance metrics to SRKW "fecundity"<sup>5</sup> and survival rates, along with a comparison of results with those based on FRAM and CTC indices (Ward et al. 2012b); Hagen-Breaux presented a simplified application of FRAM (as noted above) (Hagen-Breaux 2012); and LaVoy presented a useful overview and contrast of the FRAM, CTC, and Kope-Parken procedures (LaVoy 2012).

---

<sup>5</sup> The term "fecundity" is used in this section as equivalent to "net reproductive rate" – the number of young produced annually per female that survive to be alive when whales are first fully "counted" during early spring.

With respect to assessing the potential impact that abundance of Chinook salmon stocks might have on SRKW vital rates, *assuming that the summer period is key*, the Panel believes that the Kope-Parken metrics of terminal abundances (for stocks passing through the critical habitat area) seem more appropriate than the original FRAM-based metrics, and that the aggregated CTC indexes do not seem appropriate for such a purpose.

With respect to assessing the potential impact that availability of Chinook salmon stocks might have on SRKW vital rates, *assuming that the non-summer period is key*, the Panel believes that the relative merits of the three abundance indices are quite different than for evaluation of the summer period. In this context, all three abundance metrics could plausibly be used to develop measures of Chinook salmon abundance that might be tied to SRKW vital rates because during the non-summer months the SRKW exhibit a broad and highly variable coastal distribution.

Ward et al. (2012b) suggested that effects of Chinook salmon abundance on “fecundity” and survival rates were relatively consistent between CTC abundance indices (WVI, NBC) and the Kope-Parken abundances (terminal + ocean fishery impacts), whereas they were not consistent between FRAM and the Kope-Parken metrics. FRAM “inland” abundances were positively correlated with SRKW fecundities (though not much better than a “no salmon” model), but were negatively correlated with SRKW survival rates. CTC abundances for WCVI and NBC were both strongly and positively correlated with survival rates, whereas fecundities were more weakly but positively correlated with these CTC indices. Kope-Parken abundance metrics (terminal runs, or terminal runs + ocean fishery catches) for various stock groupings (by ocean distribution patterns: north, central, south (California) or migration timing (spring, summer, summer/fall, fall)) were weakly but positively correlated with fecundities for the summer/fall stock grouping, and were strongly correlated with survival rates for both north and central ocean distribution groupings and for the fall stock grouping. Interestingly, the “top-rated” models, judged via AIC, usually excluded Fraser spring-run Chinook salmon and California Chinook salmon. Also spring and summer stock groupings (which produce fish with higher fat content than fall fun stocks) were poor predictors of survival. These regression analyses seem generally consistent with a conclusion that SRKW vital rates are more highly correlated with broad scale aggregated abundances of Chinook salmon that share overlap in coastal geographic distribution with SRKW during early spring and late fall periods, and possibly also during the winter period. The Panel also notes that when SRKW forage for Chinook salmon during summer months in their critical habitat, they are taking advantage of high densities (fish per unit of water volume) of returning mature fish whereas foraging for Chinook salmon during other months in coastal waters must often mean that densities (fish per unit of water volume) of Chinook salmon are much lower than in the summer critical habitat. Together, these logistic regression results and observations concerning relative densities of Chinook salmon in different geographic areas and months suggest to the Panel that abundance of those specific Chinook salmon stocks that are present during the summer period and pass through the critical habitat of SRKW does not directly limit SRKW population growth. Instead, the Panel concludes that coastal abundance of Chinook salmon during non-summer months is probably more important for successful survival and reproduction of SRKW.

### ***Mature vs. immature Chinook salmon***

The use of the Kope-Parken terminal run size estimates as a metric in Ward’s logistic regression analyses, and in some of the subsequent predictions of changes in SRKW population growth rates due to elimination of fisheries (Ward 2012), reflects a positive response to the Panel’s conjecture that, at least during the summer period, SRKW must be intercepting and primarily consuming maturing/mature Chinook salmon en route to their freshwater spawning grounds. As noted above, however, it is conceivable, even perhaps likely, that abundance of Chinook salmon during winter months is more critical to successful reproduction and survival of SRKW. If so, then Ward’s use of Kope-Parken’s estimates of both terminal run size and terminal abundance + fishery catches as indicators of Chinook salmon abundance seems a worthy approach to address this key uncertainty.

### **Size Selectivity**

The concerns expressed in the initial draft report by the Panel regarding the data used to fit age/size selection curves did not receive much attention at Workshops 2 or 3. There is no dispute from the Panel that SRKW appear to consume primarily larger and older Chinook salmon. Ford and Ellis presented scale-based observations showing that the mean age of kills (4.20 years) substantially exceeded the mean age of Chinook salmon estimated available off NE Vancouver Island (3.52 years); whale kills of age-5 fish were much greater than the relative abundance of age-5 fish, whereas whale kills of age-3 fish were much less than the relative abundance of age-3 fish (Ford and Ellis 2011). In some early-maturing Chinook salmon stocks, age-3 is often the dominant age at maturity. Therefore, maturation schedules of individual stocks could affect the degree to which abundance of individual stocks would convert to abundance of “suitably sized Chinook salmon” for SRKW in their summer critical habitat. This issue would also seem of importance for assessment of the abundance of Chinook salmon that might be effectively available to SRKW during winter months as ocean populations will consist of large fish only for those stocks which are not early-maturing (i.e., that would have large numbers of age-3 and older fish remaining in the ocean to mature at later ages).

### **Competing Risks of Death Framework**

In the Panel’s initial report following Workshop 1 (Hilborn et al. 2011), the Panel devoted considerable attention to concerns about the FRAM model structure, in particular with respect to how natural mortality (and predation on Chinook salmon by SRKW and NRKW) was treated, and the Panel suggested that a ‘competing risks of death’ framework might provide a more informative setting within which to model the effects of fisheries (and competing marine mammals) on potential consumption of Chinook salmon by killer whales. The Panel continues to feel that the competing risks of death framework may have considerable heuristic value for developing a better conceptual understanding of the joint dynamics of Chinook salmon predators (fishermen, SRKW, NRKW, harbor seals, sea lions) and their prey.

In its original draft report, the Panel showed that, under an assumption that killer whales consume an approximately constant number of Chinook salmon, the force of mortality (see **Appendix B**) associated with killer whales (and probably also the forces of mortality associated with other

pinniped predators), and the associated fraction of Chinook salmon abundance that is removed by these predators, likely increases dramatically as abundance of Chinook salmon decreases. In contrast, according to abundance-based management of Chinook salmon fisheries by the PSC, the expectation of death from fishing (exploitation rate) should be roughly constant at all levels of Chinook salmon abundance, though with small “jumps” at 0.5 and 1.0 levels of abundance indexes. These very basic observations suggest that “natural mortality” (predation from all non-human sources + all other natural causes of death) is quite unlikely to be independent of Chinook salmon abundance, as current models (like FRAM) assume. Furthermore, the probable effects of eliminating fishing as a cause of death, expressed as an increase in survival rate of Chinook salmon, must also surely change, perhaps dramatically, as Chinook salmon abundance changes. Given the potential rates of consumption of Chinook salmon by the SRKW generated by Ford et al. (2011) (67,000 – 81,000 Chinook salmon during the months of July and August, with range of from 342,000 – 410,000 Chinook salmon per year assuming 70% of diet is Chinook salmon), and conjecturing proportionally greater consumption of Chinook salmon by the NRKW, it is easy to imagine that the force of mortality associated with killer whales at low Chinook salmon abundance may be quite large, especially if Chinook salmon abundance consists only of a select group of populations that are actually available to SRKW and of appropriate size or age. The Panel did not intend, by advocacy of a competing risks of death framework, to suggest that current management models be changed to continuous models with forces of fishing and natural mortality operating simultaneously. Instead, the Panel meant to emphasize that competing risks of death provides a useful conceptual and quantitative framework within which to assess the effects of fisheries, as compared to those of other predators, on survival and abundance of Chinook salmon.

Preikshot and Perry (2012) presented Ecopath with Ecosim (EwE) modeling results that are related to the competing risks of death framework that the Panel recommended, although those results apparently reflect analyses originally carried out for another purpose within the context of a Strait of Georgia EwE modeling exercise. First, they noted that the force of fishing increased through the early 1980s, when it was perhaps 9-10 times the magnitude of the force of natural mortality on Chinook salmon, whereas during the period from 2000 to present, the force of fishing had become very much less than the force of natural mortality, which had itself approximately doubled (Preikshot and Perry 2012, slide 10). These changes presumably reflect the dramatic post-FCMA reductions in fishing and the corresponding rapid increase in pinniped abundance in this area. Preikshot and Perry (2012, slide 13) also suggested that simulated Chinook salmon mortality (force of mortality) in Georgia Strait associated with pinnipeds was well below that of killer whales for the period 1960-1985, whereas during the period 1990-2010 it was roughly comparable to that associated with killer whales. Although the Panel cannot judge the analytic merits of these results based only on what was presented in the workshop presentation, the pattern of increasing natural mortality for Chinook salmon does seem plausible. However, it is important to note that mortality rates in EwE are sensitive to the predator-prey interaction assumptions. Nevertheless, the EwE results suggest that exploring the consequences of a competing risks of death model for Chinook salmon, with SRKW, NRKW, harbor seals and sea lions all identified by unique forces of mortality, could provide important insights into probable temporal patterns of Chinook salmon mortality, the role that fishing has played in those patterns, and the likely consequences of removing ocean fishing as a cause of mortality on Chinook salmon.



In **Appendix B**, the Panel presents a preliminary illustration of the kinds of insights that might be generated from adoption of the competing risks of death (CRD) framework and provides some graphical illustrations of how forces of mortality and realized mortality rates of Chinook salmon associated with different causes of death (fishing, SRKW predation, NRKW predation, other non-fishing causes) may have varied over the past 25 years. In addition, **Appendix B** provides graphical illustrations of how forces of mortality associated with these different causes may vary as a function of ocean abundance of age-4 and age-5 Chinook salmon.

Among other things, the analyses presented in **Appendix B** suggest that:

- Natural mortality rates of Chinook salmon since the early 1990s have likely been substantially higher than has been assumed in current stock assessments for Chinook salmon;
- At the lowest levels of Chinook salmon ocean abundances that have been experienced over the 1979-2005 period (less than 2.5-3.0 million), the CRD model suggests that SRKW and NRKW exert much higher predation mortality, which could lead to annual Chinook salmon survival rates below 40% under low consumption or below 30% under high per-whale consumption scenarios;
- When Chinook salmon ocean abundance is greater than about 3.5 million, it appears that assumptions about natural survival rates of 80-90% are not unreasonable because mortality rates caused by killer whales would then be relatively low; and,
- One hypothesis emerging from the calculations is that NRKW may exert as much, or more, influence on SRKW growth rate as fisheries due to their large consumption of Chinook salmon.

## **2) Are the methods employed to predict salmon abundance by stock in specific times/places scientifically valid?**

As LaVoy (2012) pointed out, only the FRAM model makes any attempt to model the seasonal abundance of Chinook salmon in specific times and places. The CTC model and the Kope-Parken run reconstruction estimates of total abundance (terminal runs + pre-terminal catches) are probably best thought of as projected pre-season abundances, prior to the beginning of the annual fishery cycle. The Kope-Parken stock-specific terminal run sizes, coupled with knowledge of run timing of stocks could, however, be used as excellent descriptors of abundance in near terminal locations and might be easily modified under various assumptions that might concern levels of fishing.

The Panel's understanding is that the FRAM seasonal abundances for various stocks are based on CWT recovery data from the late 1970s when ocean fisheries were much less restricted than current fisheries so that it was reasonable to conclude that the ocean catch distribution of CWTs from a given stock probably provided a reasonable picture of a stock's changing geographic distribution through time. Contemporary fisheries, which have extensive time/area closures, would not provide useful information on ocean distribution patterns based on CWT recoveries. Whether or not the "historic" (late 1970s) ocean distribution patterns for various stocks can be reasonably assumed to apply to contemporary management is an open question that has in part motivated on-

going fishery-independent GSI-based surveys of salmon off Oregon and California (e.g., Goldenberg and Fitzpatrick 2011).

For many stocks, existing CWT recovery data provide a moderately good basis from which to judge whether or not certain stocks would likely be found within the poorly understood SRKW winter “range”. For example, Ford et al. (2012) expressed belief that it would be unlikely for stocks of Chinook salmon north of south central British Columbia to be found within the winter range of SRKW. Also, as noted previously, California (Sacramento, Klamath) and southern Oregon (Rogue) Chinook salmon stocks would be available in large numbers only during those years when SRKW spent considerable time off the Oregon and California coasts.

### **3) Are there improvements to the methods you would suggest?**

Given the possibility that the availability of Chinook salmon to SRKW may be more important during the non-summer months, including winter, it seems important to develop improved fishery-independent assessments of current Chinook salmon distribution patterns (e.g., Goldenberg and Fitzpatrick 2011) during spring through fall months and to also somehow develop a better notion of winter distribution of Chinook salmon stocks. As ocean Chinook fisheries have been more restricted in time and space, our understanding of ocean Chinook distribution has become more limited. The paucity of winter fisheries and thus samples for CWT or genetic analysis means our understanding of winter distribution is particularly limited.

As noted above, it would seem appropriate to explore the implications of competing risks of death approaches to assessing impacts of predation by marine mammals and fishermen on Chinook salmon and to thereby gain improved insight concerning the potential impacts of changes in fisheries on availability of Chinook salmon to SRKW.

### **4) Are the methods employed to predict the reduction in salmon abundance by stock in specific times/places scientifically valid?**

The Panel interprets the intention of this question as trying to get at the reliability with which statements could be made concerning the potential increase in abundance of Chinook salmon that might result if ocean fisheries (and possibly also freshwater fisheries) were modified or eliminated.

Methods presented in workshops seem appropriate to assess the short-term impacts that reductions of fishing might have on ocean and terminal abundances of individual stocks of Chinook salmon. Based on a review of CTC model-based calculations of ocean fishery exploitation rates for the various CTC stock aggregates (provided by Kope), it appears that the average ocean fishery exploitation rates for age-3 and age-4 fish in the past several years have been about 0.15 - 0.20<sup>6</sup>. Using accounting models such as FRAM, these exploitation rates, if reduced to zero, would be expected to increase ocean abundance and terminal run sizes of Chinook salmon from perhaps 18%

---

<sup>6</sup> The Panel made no attempt to carefully average age-specific exploitation rates across stock aggregates and would not know how to do so in an appropriate fashion, but the Panel does wish to state its recognition that there is substantial variability in exploitation rates among stock aggregates.

(0.15/0.85) to 25% (0.20/0.80) *if fishing were the only source of mortality*. Recognizing that there are other forces of mortality on Chinook salmon, including possibly quite large forces of mortality associated with marine mammals, the Panel believes that a 20% increase represents an upper limit to short-term abundance increase due to reduction in fisheries and that such an increase would be much more modest when Chinook salmon were at low abundance levels. Chinook salmon ocean abundance increases projected in workshop presentations were a bit less than 20% for non-Puget Sound stocks, and much lower for Puget Sound stocks (which presumably now have much lower exploitation rates), but fairly comparable to guesses that might be made based on examination of age-3 and age-4 ocean fishery exploitation rates.

Such short-term (annual) changes in ocean abundance and terminal runs of Chinook salmon need to be distinguished from possible multi-year and longer-term improvements in ocean abundance of Chinook salmon that could theoretically be achieved via manipulation of exploitation rates in ocean and/or freshwater fisheries. Such long-term changes in ocean abundance of Chinook salmon seem worthy of more attention than they have thus far received (see Section 4.4 below).

#### **4.4 Effects of Possible Reductions in Fisheries on Abundance of Chinook Salmon**

Based on material presented at the workshops and on analyses made by Panel members, the Panel developed a summary of anticipated impacts that reduction and/or changes in Chinook salmon fisheries could have on abundance of Chinook salmon. Among other things, the Panel believes: 1) that it is important to distinguish short-term effects from long-term effects that might result from changing fishing regimes; 2) that it is important to recognize that fishing regimes could be changed in both terminal (freshwater fisheries and marine fisheries focused on maturing fish) and ocean fisheries; and 3) that it is important to acknowledge that effects of changes in fishing would be different for hatchery stocks than for wild stocks. The Panel summarizes these anticipated impacts in the bulleted list provided below.

##### **For wild populations:**

##### **Short-term/annual accounting:**

- If "all ocean fisheries were closed", there would be a short-term increase in ocean abundance of Chinook salmon available to SRKW due to the direct reduction in ocean fishing. This effect would probably be a maximum of about 25% from an annual accounting perspective.
- Elimination of all ocean and terminal fisheries would have an identical short-term effect on ocean abundance of Chinook salmon as given in previous bullet because freshwater fisheries reduce Chinook salmon abundance only after killer whales (and other marine mammals) have had an opportunity to intercept them. Therefore, freshwater fishery reductions could only contribute to long-term changes in Chinook salmon abundance via their impacts on spawning stock abundances.

**Long-term accounting:**

- Assuming that Ricker stock-recruitment models are appropriate for most Chinook salmon stocks, fisheries could be managed for maximum recruitment rather than maximum yield, thereby increasing recruitment via an increase in spawners.
- Long-term achievement of maximum recruitment under a Ricker model would require some harvest to be allocated across marine and freshwater fisheries so as to achieve a harvest rate (expressed in terms of adult equivalents) that would maximize recruitment. (Total recruitment is anticipated to be less under a no-fishing scenario than with some fishing.)
- Maximum ocean abundance of Chinook salmon available to killer whales would be achieved with harvest taking place only in freshwater, with freshwater fisheries set to reduce spawning stock so as to achieve maximum recruitment.
- Assuming that fisheries are currently managed to allow Chinook salmon escapements near their MSY levels, shifting to management for maximum recruitment might increase ocean recruitment by about 6-9%, based on stock-recruitment relationships currently used by CTC.
- If ocean fisheries were eliminated and freshwater fisheries were managed for maximum recruitment, then there would be an additional benefit, compared to the present, due to elimination of ocean interception of immature salmon prior to maturity. For a given stock, this benefit would depend on the current age-specific ocean fishery exploitation rates and the stock-specific maturation schedule. For most stocks, this benefit would typically probably be at least an additional 20% above the benefit due to increased recruitment.
- If ocean fisheries and freshwater fisheries were both eliminated, the long-term effect, assuming a Ricker model, would likely be reduced recruitment as compared to the present, although possibly with some benefits to ocean abundance, again through elimination of interception of immature fish. The logic of this statement is based on an assumption that the natural equilibrium recruitment (expressed as adult equivalents) falls to the right of the dome of the Ricker model, the usual case.

**For hatchery populations:**

- Because existing fisheries rarely prevent hatchery returns from achieving the numbers required to meet hatchery production goals, recruitment of hatchery fish can safely be assumed independent of fishery regimes.
- If ocean fishing were eliminated, ocean abundance of hatchery fish would be increased via elimination of immature fish that would otherwise remain in the ocean. For a given stock, this benefit would depend on the current age-specific ocean fishery exploitation rates and the stock-specific maturation schedule. This benefit would typically be at least an additional 20%. Elimination of freshwater fisheries would have no effect on ocean abundance of hatchery stocks and would therefore generate no benefits in terms of availability of hatchery fish to SRKW.

In summary, maximum long-term increases in abundance of Chinook salmon that might theoretically be available to SRKW would be achieved by eliminating all ocean fishing (typically at least 20% increase in ocean abundance of age-4 and age-5 hatchery and wild fish due to elimination of ocean fishery interception of immature fish) and by maximizing recruitment through manipulation of freshwater exploitation rates to maximize recruitment (6-9% increase in recruitments of wild fish; no impact on hatchery fish).

## 4.5 Recommended Information and Analyses

- Further analysis of all available information that might shed light on winter distribution of Chinook salmon stocks and SRKW, including attempts to “weight” observed spatial distributions of SRKW according to sampling levels and locations at which acoustic receivers have been deployed (e.g., deployment of acoustic receivers off the Washington coast seems much greater than off the California coast and must affect detection probabilities).
- Develop improved measures of the abundance of harbor seals and sea lions, as well as their predation impacts on Chinook salmon.
- Continue to evaluate the possible influence of abundance of competing marine mammals (NRKW, harbor seals, sea lions), as well as seasonally available alternate chum salmon prey, on fecundity and survival rates of SRKW and NRKW.
- Explore the competing risks of death (CRD) framework (Quinn and Deriso 1999) as a simple, heuristic approach to investigating interactions among competing predators, in the context of potential expected benefits to SRKW due to reduction/elimination of fishing at different relative abundances of Chinook salmon. The CRD approach could help to integrate broader ecological understanding into mechanistic models of the Chinook salmon–Marine Mammals–Fisheries system since all of these dynamics are intertwined. (See **Appendix B.**)

## 5.0 PROJECTED FUTURE STATUS AND RECOVERY

### 5.1 Context

The Panel was asked to evaluate the available information and analyses concerning projected future population status of SRKW and how Chinook salmon fisheries might affect such status. In addition, the Panel evaluated existing indicators for measuring recovery of SRKW against US and Canadian endangered species criteria. The Panel was also asked to address the most fundamental and contentious issue involved in evaluating Chinook salmon fishery effects on future status and recovery—namely whether existing correlative evidence for past linkages between SRKW vital rates and indices of Chinook salmon abundance meets the necessary criteria to imply causality between future Chinook salmon abundance and future SRKW status.

Key Question 1 focused on the past by asking that the Panel examine the methods used to establish historical relationships between salmon abundance and killer whale survival and birth rates. Other sections of this report review SRKW population growth rates, the biological justification for linking salmon to SRKW nutritional status, and fishery effects on salmon available to SRKW. Therefore, the Panel looked specifically at how this historical information has been used to estimate population model parameters for salmon effects on SRKW dynamics, as well as the basis for attributing causation to correlative evidence. Key Question 2 focused on the future by asking the Panel to review the basis for forward projection models used to assess future status and recovery of SRKW under alternative salmon abundance scenarios. Projecting SRKW abundance forward in time, although technically feasible, involves a suite of assumptions and is, therefore, far more uncertain than fitting those models to past abundance data. Therefore, the Panel provides a critical review of the assumptions and conditions behind those projection model components.

**Key Question 1.** Are the methods employed to evaluate the relationship between salmon abundance and SRKW (and/or NRKW) fecundity, survival and population growth scientifically reasonable? Do you have any additional analyses or specific suggestions to improve the methods?

The Panel considers the methods used to evaluate the relationship between salmon abundance and killer whale fecundity, survival, and population growth rates scientifically reasonable and, in several respects, state-of-the-art. The quantitative evaluation, which mainly took the form of Bayesian logistic regression modeling of age-/stage-structured survival and fecundity data, encompassed a wide range of covariates, including salmon, marine mammals, and climatic factors. In practically all cases, there were reasonable hypotheses for including various factors, although these were less clear when it came to Chinook salmon variables. For instance, some Chinook salmon indices used in the regression analyses contained stocks that may not be readily available to SRKW. Nevertheless, results of the correlative approaches (Ward et al. 2009, Ford et al. 2010a), as well as additional presentations at Workshops 1-3 linking Chinook salmon abundance to SRKW vital rates were reasonably consistent with expected dynamics of a highly selective predator and its primary prey.

A large body of supporting data and analyses were presented to support a plausible mechanistic link between SRKW vital rates and broad-scale indices of Chinook salmon abundance. Perhaps the strongest data are the May–September feeding, diet, and social structure observations of resident killer whales (Ford et al. 2009, Hanson et al. 2010a, Ford and Ellis 2011, Hanson 2011, Ford 2012a). Although the details of these processes are uncertain outside the summer period, information presented in Workshop 3 supported the notion that overlap is possible between SRKW and most Chinook salmon stocks with origins south of central British Columbia in any season, including winter (Weitkamp 2010, Ford et al. 2012). Stable isotope and contaminant load (O'Neill et al. 2012a, 2012b) analyses were also consistent with an SRKW diet comprised of Chinook salmon from a wide range of sources well outside the narrowly defined Puget Sound/Fraser River area.

**Correlation-Causation Debate:** Although there is a reasonable body of scientific evidence showing that Chinook salmon are important prey for SRKW, there is a limited range of specific observational evidence and no possibility of experimental evidence linking Chinook salmon abundance to SRKW population growth. Because SRKW growth and salmon abundance data are observations of uncontrolled events obtained from an unknown sampling design, there is a high risk of incorrectly assigning causes to correlations and making relatively weak inferences. Ultimately, the existing information is most effective for hypothesis generation (Schwarz 1998).

Workshop 3 provided an opportunity for several participants to debate the correlation vs. causation issue from a weight-of-evidence perspective (Burkhardt-Holm and Scheurer 2007). Causation in this instance is specifically meant to imply that observed changes in Chinook salmon abundance have been a primary cause of the observed changes in SRKW population growth rates. The panelists were given three questions, two of which were:

- 1) What is the strength of evidence that changes in Chinook salmon abundance cause or do not cause changes in SRKW vital rates?
- 2) What is the strength of evidence that changes in fisheries in the future would cause or would not cause changes in Chinook salmon abundance sufficient to affect SRKW vital rates?

Not surprisingly, none of the 5 responses provided specific and unequivocal answers to these questions. For question (1), responses varied from broad lists of evidence in favor of a cause, to rather specific evidence suggesting that cause should be rejected for all except one particular Chinook salmon abundance index. Other panelists remained "unconvinced" given the possibility of alternative ecosystem-level mechanisms or thresholds dividing Chinook salmon abundance into low levels where causation seems likely to high abundance where causation seems unlikely. At least two panelists suggested that any causal effects arising from (2) would probably be weak, given the estimated effect sizes from statistical modeling. One panelist suggested that changes in future fisheries should only be considered for fisheries harvesting Chinook salmon stocks for which a causal relationship to SRKW vital rates has not been rejected based on statistical significance of a relationship and meaningful overlap between abundance and SRKW ranges. Several panelists also pointed out that the impacts on SRKW of changes to Chinook salmon fisheries would need to

consider how an increase in available salmon might be spread across salmon predators (e.g., SRKW, NRKW, pinnipeds).

## 5.2 Forecasts of SRKW Future Status

In the original Biological Opinion on the Puget Sound Chinook Harvest Management Plan, NOAA Fisheries devised and evaluated alternative fishery regimes to assess their relative impact on future status and recovery of SRKW (NOAA/DFO letter to Panel). Over the course of three workshops, the alternative fishery regimes have essentially been reduced to two: (1) maintain status quo with annual ocean fishery exploitation rates on the order of 20% and (2) close all ocean fisheries. Such a simplification is probably warranted in this case given what appears to be a revised understanding of interactions between fisheries and SRKW. In particular, it seems to be a gross extrapolation to implicate any particular fishery, including those during the peak Chinook salmon abundance period in summer, in affecting SRKW population growth rate. Instead, a more plausible working hypothesis is that highly mobile SRKW (and NRKW) respond to larger spatial scale changes in Chinook salmon abundance than can be appreciably affected by any specific Chinook salmon fishery.

With the alternative fishery scenarios as defined above, and a working hypothesis, we now turn to addressing one of the original questions posed in this section (i.e., **Key Question 3**).

**Key Question 3:** Based on your expert opinion, what level of confidence would you assign to the conclusion that predicted changes in Chinook salmon abundance caused by fisheries affect the population growth rate of the SRKW?

Clearly, all of the issues and concerns raised in the correlation vs. causation debate apply here to Key Question 3. To state the Panel's opinion, the evidence seems reasonably strong that vital rates of SRKW are, to some degree, ultimately affected by broad-scale changes in their primary Chinook salmon prey. However, even if there is a causal mechanism, the Panel's opinion is also that such a mechanism is probably not a simple linear cause-and-effect one for a variety of reasons. For example, if Chinook salmon abundance is causally related to SRKW mortality and fecundity, then it also seems likely that SRKW (and other predators) can cause changes in Chinook salmon mortality (see **Appendix B**). Such feedbacks imply non-linear density dependence in SRKW growth rate (e.g., a large region of Chinook salmon abundance over which growth response is small, but a small region where growth response is large). The logistic regression models and supporting auxiliary evidence reflect only a narrow range of abundance for both SRKW predators and their Chinook salmon prey, which increases the risk of poorly capturing these relationships. Thus, the Panel's overall view is that the predator-prey system involving Chinook salmon, SRKW, NRKW, and some pinnipeds is only partially described by correlations between Chinook salmon and SRKW. Therefore, any predictions about impacts of changing fisheries may not be robust to changes in the status of other Chinook salmon predators, or even to changes in Chinook salmon abundance.

**Confidence in conclusion for Key Question 3: Low.**



Justification for the Panel's low degree of confidence in the conclusion stated in Key Question 3 is based on arguments for or against the two underlying premises.

*(1) Models for predicting the future distribution of Chinook salmon abundance accurately capture the dynamical response of future Chinook salmon abundance to fishery closure (i.e., eliminating a 20% ocean exploitation rate).*

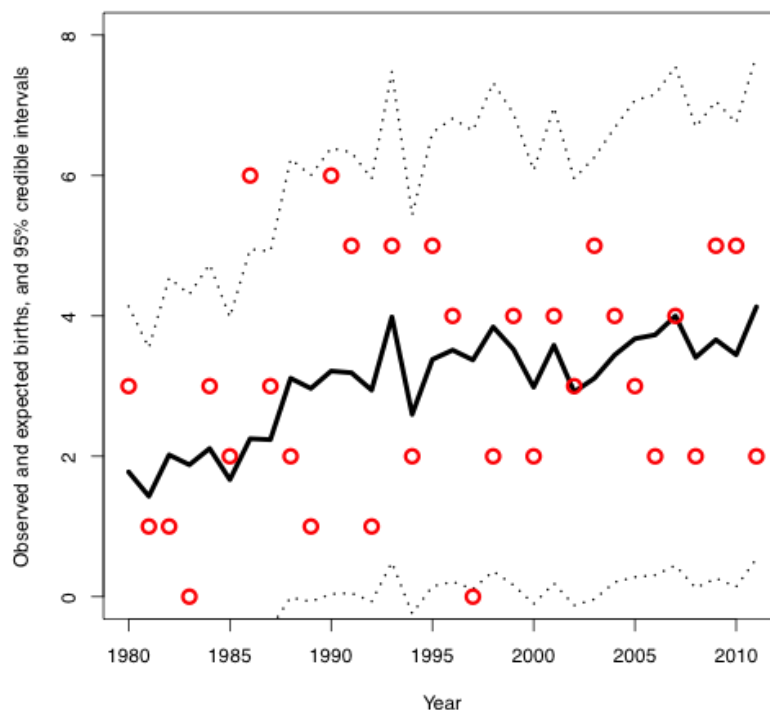
Current models used to predict future salmon abundance assume that Chinook salmon mortality components are independent and strictly additive, and production follows a density-independent random-walk process. The former are typical assumptions used in single-species fisheries models, including FRAM and CTC models that form the basis for Chinook salmon abundance modeling, while the latter assumes independence between Chinook salmon abundance and predator abundance, as well as lack of Chinook salmon recruitment response to changes in spawning abundance (i.e., if spawning abundance actually increased in the absence of fishery exploitation). If all of these assumptions hold, then removing the fishery would cause a 25% increase or more (see Section 4.0) in available Chinook salmon abundance across all stocks.

Alternative assumptions could be used in predicting future Chinook salmon abundance. For example, Chinook salmon mortality components are not independent and not strictly additive (i.e., multiple competing predators), and production follows density-dependent processes (e.g., Ricker) with ocean survival depending on predation regime. These are typical assumptions used in multi-species fisheries and trophic models (e.g., Ecosim; Preikshot and Perry 2012), as well as predator-prey models, for example involving ungulates, wolves, and large cats. Removing a 20% fishery exploitation rate would have short- and long-term effects as well as differential effects by stock via stock-specific density-dependence (see Section 4.0). In the short-term, maximum Chinook salmon abundance change would be +25% assuming that all fishing and predation impacts are independent and additive (see **Appendix B** and Section 4.0). Long-term changes in Chinook salmon abundance would be dependent on interactions between abundance, ocean predation and freshwater density-dependent production (Section 4.0). This suite of alternative assumptions is probably more "realistic", but also more difficult to quantify and assess from existing data than the current set of assumptions used to model future Chinook salmon abundance.

*(2) Changes in Chinook salmon abundance caused by fisheries affect the population growth rate of the SRKW.*

The implied causality within this premise has already been discussed above. Suppose for the sake of the present argument that we allow for a causal relationship between Chinook salmon abundance and SRKW growth rate. The approach used to fit a SRKW population dynamics model to observed births, survival, and salmon data has also been discussed already and given reasonably strong endorsement by the Panel as a scientifically reasonable means of parameterizing a SRKW population projection model. A central issue involved in earlier reports and discussions with the Panel focused on the process error variance represented in this projection model. The term "process error" in this context means uncertainty or unexplained variation in the data resulting from the choice of model boundaries. Distributions of these process error effects are usually assumed known and range from simple binomial variation in survival rates and sex ratios at-birth

to perhaps auto-correlated random-walk processes influencing birth rates. The error variance of the logistic regression models linking Chinook salmon abundance to SRKW growth rates is used to capture the missing process error effects of unmodeled factors. For example, **Figure 5-1** shows that the posterior predictive distribution for SRKW birth rates effectively captures both the long-term pattern and range of the observed births. Similar distributions would apply to sex ratio at birth and survival rates. Therefore, the random process errors in projections of future SRKW population size should produce a distribution of future SRKW population size trajectories that is highly likely to contain the true future trajectory.



**Figure 5-1.** Posterior predictive distribution and observed births for SRKW. The solid line is the mean of the distribution and the upper and lower dotted lines are the 0.975 and 0.025 quantiles, respectively. The circles are observed births. Revision of original source: (Ward et al. 2009).

Process errors actually influence future population dynamics via multiple feedbacks, so assumptions about their structure may be critical to the robustness of future SRKW projections regardless of whether the SRKW growth rate is causally linked to Chinook salmon abundance or just correlated. In essence, process errors arising from unmodeled factors propagate (i.e., compound) via the population dynamics model and rather rapidly lead to a lack of robustness of model predictions if their structure is incorrect. Even though conclusions are correctly drawn from the distribution of future population trajectories, the timing and probability of specific events described by these distributions (e.g., probability of meeting delisting criteria within 28 years) will not be robust.

The Panel, as well as workshop presentations and supporting literature, highlighted numerous unmodeled factors and processes that may not vary in simplified random ways. Primary attention

has been given to the presence and dynamics of alternative Chinook salmon predators, relatively stable consumption requirements of long-lived mammals, mobilization of killer whale body contaminant loads, feeding and social behavior, etc.

The alternative fishery regimes represent a rather small change of exploitation rate and the models used to predict the future impact of this change are only reliable under rather restrictive dynamic model assumptions and state conditions (e.g., low Chinook salmon abundance, high SRKW abundance). Attaching a suite of caveats to a predicted small effect size should only result in relatively low confidence in the predictions.

### 5.3 Recovery criteria

The Panel was specifically asked to comment on "(e) scientific considerations relevant to potential performance criteria for determining risk to SRKW from fisheries impacts" (NMFS 2011a). Presentations in Workshops 1-2 (Barre 2011, 2012), as well as letters to the Panel, further emphasized the need to "provide advice on the utility of PBR, and any other suggestions for performance criteria and metrics for evaluating the effects of actions on SRKW"[Panel paraphrasing].

It is important to note that criteria aimed at measuring recovery success differ between the US and Canadian contexts. Although the Panel was not asked to comment on recovery criteria under the Canadian recovery strategy for SRKW, they are presented here as a complementary perspective (**Box 5-1**). In general, note that Canadian recovery performance metrics are more qualitative than quantitative in that they do not specify specific numerical targets or thresholds for abundance or population growth rates, both of which were key topics debated in the workshop process as well as within this report.

**Box 5-1. Interim Measures of Recovery Success for SRKW Recovery Strategy**  
(Fisheries and Oceans Canada 2011).

- a) Long-term maintenance of a steady or increasing size for populations currently at known historic maximum levels and an increasing size for populations' currently below known historic maximum levels;
- b) Maintenance of sufficient numbers of females in the population to ensure that their combined reproductive potential is at replacement levels for populations at known historic maximum levels and above replacement levels for populations below known historic maximum levels;
- c) Maintenance of sufficient numbers of males in the population to ensure that breeding females have access to multiple potential mates outside of their own and closely related matriline;
- d) Maintenance of matriline comprised of multiple generations to ensure continuity in the transmission of cultural information affecting survival.

## General Comments

Assessing the status of a population requires unambiguous and measurable recovery criteria that are to be compared against objectives. The standard approach to developing such criteria is to word them in such a way that a group of knowledgeable people, given a description of the issue, could agree in the future whether or not a particular criterion had been met (Morgan and Henrion 1990). This so-called "clarity test" further implies that any quantities included in the criteria must also be measurable, possessing real true values, and be repeatable such that the same information would lead to the same conclusions. Repeatability further implies that the methods used to compute the criteria are clearly defined. Developing measurable population recovery criteria should therefore include definitions for:

- 1) Population characteristics that can be reliably and repeatably measured or inferred (e.g., abundance, growth rate, age-structure, sex ratio);
- 2) Thresholds and/or target values for these characteristics that uniquely define population status (e.g., "recovered", "depleted");
- 3) Probability level at which the measured population characteristic is said to meet the target (or exceed the threshold);
- 4) Temporal (or spatial) frame over which to measure the characteristic and probability; and
- 5) A clear method for calculating the specified population metrics.

In reviewing the Biological Opinion (NMFS 2011a), recovery plan (NMFS 2008), 5 Year Review (NMFS 2011b), and the Canadian recovery strategy (Fisheries and Oceans Canada 2011), the Panel was not able to identify any threat, status, or recovery criteria defined explicitly in terms (1)-(5). In particular, the *Threats Criteria* described in the 5 Year Review do not seem to have clearly defined conditions upon which the threat criteria could be met. There is clearly a considerable amount of research activity aimed at studying the threats, but without explicitly defined and measurable objectives, it is difficult to determine how the research will contribute to removing the threats.

## Performance Criteria for Assessing Recovery

**Population growth rate:** Population growth rate would seem, at first thought, to be reasonably straightforward to measure and apply as a recovery criterion, especially for SRKW because observation error in abundance is very low. However, as demonstrated in the workshop process, the methods used to define and estimate population growth rate must be made more explicit because the calculations involve assumptions about the underlying population dynamics model as well as the time frame over which the rate is measured. Even the most basic population trend estimator (i.e., that follows the basic laws of population growth), assumes a time frame ( $t - k$ ) and an exponential population growth model of the form  $N_t = N_{t-k} e^{\lambda(t-k)}$ , where  $\lambda$  is the population growth rate. An estimate of  $\lambda$  is then obtained via ordinary linear regression between logarithms of population size and year  $t$  (i.e., linearize the growth model to  $\log N_t = \log N_{t-k} + \lambda(t - k)$ ). Incorporating the important effects of population age- or stage-structure on growth rate requires disaggregating abundance into multiple age or stage classes, and also disaggregating the population growth rate into distinct survival and reproduction components for each class. However, even though such expansion of assumptions underlying the population growth rate estimate is well-supported by the available data, as demonstrated in Workshop 3, alternative methods for computing stage-specific survival and fecundity rates can lead to very different results (see Section 2.0).

The ability of population growth rate to indicate status or recovery depends on the particular situation in which it is applied. Basic population dynamics theory dictates that the population growth rate cannot remain constant over too wide a range in population size and must eventually decline to zero at some non-zero value of population size. Growth rate estimates for the whole SRKW population, as well as pod-specific values (Section 2.0) suggest that the total population is growing slowly, while J and K pods are growing faster than L pod (although they are also smaller). It is still not clear whether these low growth rates are to be expected because the total population is near carrying capacity of 100-150 whales, or whether they are unexpectedly low for a population far from its carrying capacity of ~400 whales. Since a populations growth rate will decline as it nears carrying capacity, a growth rate recovery criterion is intrinsically problematic. An approximate doubling of the NRKW population over the past 30 years suggests that the conditions for this SRKW neighbor population were good enough to support sustained growth where possible.

The growth rate criterion used to assess recovery of SRKW includes three of the five required elements for a measurable objective. It is missing a probability level of achieving the 2.3% rate, and specification of the method used to calculate the growth rate. The strength of quantitative

assessments of historic population growth rate as presented to the Panel is in the posterior distribution of  $\lambda$ , which can be used to provide the required probability that the population growth rate exceeds 2.3%. The posterior distribution of  $\lambda$  showed some weight of evidence in the right tail of growth rates where  $\lambda > 1.023$ , indicating that historic rates exceeding recovery criteria cannot be ruled out. At the same time, there is complementary evidence in the left tail indicating that historic growth rates were negative (i.e.,  $\lambda < 1.0$ ). There is no reference in the supporting material to a  $\lambda < 1.0$  status or recovery criterion, so the Panel cannot comment on the non-trivial probability ( $p \sim 0.07$ ) that the population growth rate is negative. Choosing a probability criterion is definitely not straightforward because it defines the allowable risk that, for example, SRKW decline in the future without an attempt at mitigation.

**Population abundance:** The attraction of abundance-based metrics, especially for SRKW, is the high accuracy and precision with which abundance of the majority of the population is measured. The number of individuals in small populations also features prominently in status criteria defined by US, Canadian and IUCN conservation guidelines. In Canada, small population size (i.e.,  $N < 250$ ) is the main criterion for which SRKW are listed under SARA. Because the condition for listing is also the condition for delisting, it seems likely that SRKW will remain listed under SARA for the foreseeable future.

Using abundance-based recovery criteria to downlist SRKW under the US ESA requires choosing a target abundance level amidst considerable uncertainty in the historical population size. For example, the Biological Opinion (NMFS 2011a, p. 42) states:

*"The historical abundance of Southern Resident killer whales is estimated from 140 to an unknown upper bound. The minimum estimate (~140) is the number of whales killed or removed for public display in the 1960s and 1970s added to the remaining population at the time the captures ended. Several lines of evidence (i.e., known kills and removals [Olesiuk et al. 1990], salmon declines [Krahn et al. 2002] and genetics [Krahn et al. 2002, Ford et al. in press]) all indicate that the population used to be a lot larger than it is now, but there is currently no reliable estimate of the upper bound of the historical population size. When faced with developing a population viability analysis for this population, NMFS' biological review team found it reasonable to assume an upper bound of as high as 400 whales to estimate carrying capacity (Krahn et al. 2004)."*

It appears that an abundance recovery target of 140 animals has a reasonably sound empirical basis, while the upper bound of 400 is somewhat arbitrary. The Panel could not find any further justification for 400 animals in the SRKW population, except from population genetics studies (Ford and Parsons 2012), although those are uncertain as well. As discussed below for extinction risk projections, choosing an upper bound of 400 may lead to an under-estimation of extinction risk if the actual carrying capacity is much smaller.

Note that recovery strategies for resident killer whales in Canada do not use abundance as a recovery target, mainly because of difficulty establishing historical population sizes (Fisheries and Oceans Canada 2011).

**Projected changes in abundance:** As mentioned above, abundance has the attractive feature of measurability, which allows for direct monitoring of progress against recovery goals. If instead, recovery goals are based on projections of abundance, say one or two generations into the future, then several uncertainties creep into the problem. First and foremost, the projection model scenarios chosen to establish recovery potential and metrics have a strong influence on perceptions about the efficacy of alternative recovery strategies. The Panel's low confidence in the future predictions of Chinook salmon abundance and SRKW responses to that abundance (see above response to **Key Question 3**) is essentially repeated here. This is not meant to imply that the population modeling is not a valuable and worthwhile research activity. On the contrary, the Panel believes that the models should be refined and used to make *a priori* predictions for future SRKW dynamics that can then be compared to observations in the normal process of scientific investigation. The Panel's point is that these models are simply not mature enough at this time to warrant a high degree of confidence in their predictions alone.

**Projected changes in extinction risk:** Recovery criteria based on extinction risk are sensitive to several factors, including *inter alia*: (1) variation in the specific definition of extinction and (2) the difficulties involved in modeling future SRKW abundance as discussed above, as well as choices for population viability analysis (PVA) scenarios. According to SRKW recovery plans, "NMFS defined 'quasi-extinction' as the stage at which 10 or fewer males or females remained a threshold from which the population was not expected to recover" (NMFS 2008). In Workshop 2, quasi-extinction was taken to be  $N < 20$  individuals (Ward 2012). Although quasi-extinction is, by definition, a somewhat arbitrary choice, the specific criteria for SRKW should at least be consistent among PVA analyses.

Earlier assessments of extinction risk (e.g., Krahn et al. 2004) found that such risks are strongly dependent on SRKW carrying capacity and catastrophic effects assumptions (i.e., the two factors for which there is the least amount of data or experience). For instance, absent a catastrophe and given the observed range of survival and fecundity over the past 29 years, quasi-extinction risk for SRKW over 300 years increases 10-fold as carrying capacity values decrease from 400 down to 100 whales (Scenario A(Q)1 in Krahn et al. 2004). Higher carrying capacity implies greater scope for population growth at current abundances (~87 whales) and thus rapid growth away from quasi-extinction thresholds, while lower carrying capacity implies little scope for growth away from quasi-extinction thresholds.

There have been catastrophic losses of killer whale populations in the past, although the rarity with which they occur makes it difficult to assign probabilities of occurrence. For example, the following quote describes killer whale population declines associated with the 1989 Exxon Valdez oil spill in Prince William Sound, AK (Matkin et al. 2008):

*"The loss of 33% of AB Pod and 41% of the AT1 Group from the time of the spill through the following winter of 1989–1990 is a catastrophic event with no precedent in any population of killer whales in the North Pacific (Ford et al. 1998, 2000, Matkin et al. 1999a) and is well outside the normal range observed in other pods from the southern Alaska resident population."*

Although the threat of an oil spill features prominently in the SRKW 5-year status review (NMFS 2011b), there was no mention in the actual modeling work in NMFS (2011) or Krahn et al. (2004) of the impact of the Exxon Valdez oil spill on killer whale populations in Alaska. This suggests that the original PVA models could have under-represented the magnitude of catastrophic effects from events like oil spills. In addition, the PVA did not contemplate persistent effects of a single catastrophe, even though the effects of the Exxon Valdez spill appear to have persisted for more than a decade (Peterson et al. 2003, Matkin et al. 2008).

**Key Question 2.** Are the methods employed to evaluate the viability of the SRKW under alternative assumptions about future salmon abundance scientifically reasonable? Do you have any specific suggestions to improve the methods?

The PVA methods used for SRKW recovery planning are as scientifically reasonable as any other application of these methods. See below for suggested ways to improve them.

**Key Question 5.** Based on your expert opinion, what level of confidence would you assign to the conclusion that predicted changes in Chinook salmon abundance caused by fisheries increases the risk of extinction of the SRKW population?

The Panel assigns very low confidence that future fisheries will appreciably affect the extinction risk of SRKW. Besides great uncertainty in the actual extinction risk caused by unmodeled, yet plausible process effects (i.e., of salmon and SRKW dynamics), the effects of fisheries in existing PVA models are much smaller than effects of carrying capacity and catastrophic mortality events.

**Ratios of prey available to prey required:** Prey availability, measured one way as the ratio of prey available to prey requirements given metabolic demands associated with SRKW abundance and population structure, is an attractive performance metric for recovery strategies because these are potentially controllable by decision-makers. Analyses presented in the workshops (Noren 2011b, 2012) as well as recent published studies (Williams et al. 2011) suggest that Chinook salmon requirements for a SRKW population of 87 animals (and assuming current population structure) range from 211-364,000 age-4 equivalents per year. These estimates are clearly valuable pieces of information to consider given the specialist predator-prey relationship between SRKW and Chinook salmon.

The challenge in using these ratios will obviously be in determining what salmon are available given fluctuations in Chinook salmon abundance as well as competition with other salmon predators. The example competing risks of death framework in (**Appendix B**) shows one way to evaluate how available prey changes with changes in the abundance and prey requirements of competitors, as well as how the relative force of mortality is partitioned among various predators and fisheries.

**Potential biological removal (PBR):** As part of Workshop 1, the Panel was asked to comment on the following in relation to PBR,

***“If the effects of prey reduction on killer whale population dynamics due to a specific action were quantified in a manner similar to the effects of a direct***



***harvest or harvest bycatch action, would using a bycatch-oriented framework such as PBR be a reasonable approach for assessing these effects?" (Barre 2012)***

PBR is not specifically a recovery criterion, but rather an operational procedure for setting the allowable level of impact to a population depending on its status. This level of impact, or allowable removal, is based on the formula,

$$PBR = N_{\min} \frac{R_{\max}}{2} F_R$$

which is just the harvesting equation for a logistic growth model in which  $N_{\min}$  (87 for SRKW) is the minimum population size estimate,  $R_{\max}$  is the maximum rate of growth (assumed 0.04 for SRKW), and  $F_R$  is a safety factor used to reduce allowable removals as per Marine Mammal Protection Act guidelines for endangered ( $F_R=0.1$ ), threatened or depleted ( $F_R=0.5$ ), or above optimal sustainable levels ( $F_R=1.0$ ) (Loneragan 2011). This PBR approach has the benefit of being relatively straightforward to apply to SRKW (e.g., Barre 2012),

$$PBR = 87 \left( \frac{0.04}{2} \right) 0.1 = 0.17 \text{ SRKW/Year}$$

Thus, PBR for SRKW would be a relatively small fraction of a whale per year. Despite its simplicity, the Panel doubts that PBR would be a practical performance measure for assessing impacts of Chinook salmon fisheries on SRKW recovery. First and foremost, PBR cannot be readily monitored or measured from actual data, which precludes using it in objectives or performance criteria as defined above. In contrast to fishery bycatch applications, where PBR is sometimes used to determine allowable impacts on marine mammals, one cannot observe killer whales being "removed" from the population. On the contrary, killer whales that disappear are rarely recovered and therefore the cause of death cannot be determined (NMFS 2011b). Since 2005, only one reported killer whale stranding was identified as a Southern Resident Killer Whale (cause of death was apparently a vessel strike) and none of the reported deaths were attributed to starvation (NMFS 2011b), which would be the assumed mechanism by which removals would be caused by Chinook salmon fisheries, unless there is an interaction between nutritional state and probability of ship strike or other source of mortality.

Determining whether Chinook salmon fisheries were responsible for indirectly removing 0.17 whales per year (or some fraction thereof) would require a highly precise model to allocate impacts of a suite of factors affecting SRKW abundance at any particular time. And it is increasingly clear that models taking multiple impacts on SRKW abundance and dynamics into account are not available at the present time.

**Viable risk assessment procedure (VRAP):** According to presentations in Workshop 2 (Barre 2012), VRAP defines the highest allowable exploitation that causes low risk to survival and high probability of long-term population recovery. The considerations described above for PBR similarly apply to VRAP. In particular, VRAP appears to be a simulation-based procedure for defining the risk adjustment factor  $F_R$  based on specific biological and policy-related reference points.

**Biological criteria:** Characteristics of SRKW populations, such as abundance, age-structure, sex ratios, social structure, and genetic diversity feature prominently in assessments of SRKW status, and likely continue to in the future, for both US and Canadian recovery strategies. Because biological characteristics are reasonably measureable, one way to improve the use of these criteria is to perform meta-analyses across a wide range of populations. At the present time, the only reference population for SRKW is the NRKW population, which may or may not be appropriate. As wide a range as possible in killer whale populations may provide a better empirical distribution against which to judge the future status of SRKW.

## 5.4 Recommended Information and Analyses

**Key Question 4.** Based on your expert opinion, are there additional analyses that could be conducted on the SRKW population or other resident killer whale populations to better understand the relationship between salmon abundance and killer whale population viability?

The Panel recognizes the considerable progress that has been made in understanding how salmon abundance may affect killer whale population dynamics. The analyses performed to date on the relationship between salmon abundance and killer whale fecundity and survival have likely extracted as much information as can be gained from the historical data. The results certainly lend credibility to the hypothesis that SRKW growth rates and abundance are related to salmon abundance, but they also raised many questions about specific mechanisms, the chance of spurious correlations, alternative hypotheses, data gaps, and expected changes in Chinook salmon availability. In the absence of controlled experiments, we will continue to rely on observational data, and therefore will remain unable to clearly distinguish among these alternatives in the future.

***“If the effects of prey reduction on killer whale population dynamics cannot be adequately quantified, are there alternative frameworks for evaluating the risks of a particular level of prey reduction?”*** (Barre 2012)

Decision-analytic approaches and quantitative risk assessments are specifically designed to deal with irreducible uncertainties (Morgan and Henrion 1990). In general, much of the modeling work that has been done represents a form of quantitative risk assessment albeit with a specific focus on impacts caused by fisheries. However, clear indications that predation regimes faced by Chinook salmon are also changing raises considerable doubt that fisheries alone are having major impacts on SRKW dynamics. Therefore, as the Panel has attempted to communicate above, the Panel feels that an explicit set of “realistic” alternative hypotheses is missing from these analyses.

***“Based on data and uncertainties, what criteria would be robust for assessing impacts of fisheries?”*** (Barre 2012)

There have not been many robustness tests of any performance measures for assessing impacts of fisheries of SRKW recovery. Robustness is about drawing the correct inferences and conclusions despite an incorrect perception of the underlying mechanisms. The Panel, as well as participants in the workshop process, has identified some alternative mechanisms and scenarios that should be investigated in greater depth, and perhaps one objective of those analyses should be to explicitly

evaluate robustness of a suite of performance metrics at distinguishing among these hypotheses. In its draft report, the Panel suggested that simulation approaches be used to evaluate our ability to detect impacts of fisheries on SRKW under alternative scenarios. Although those specific suggestions did not survive interim reviews, the Panel continues to advocate for assessing robustness of performance measures via creative application of that approach.

Given the location and concentration of critical habitat, the SRKW population may be more exposed to industrial hazards than any other killer whale population in the world. Research characterizing potential catastrophic risks faced by SRKW associated with industrial accidents should continue to be a high priority.

If extinction risk criteria are central to recovery planning, then research on a wider range of factors than fisheries must be done, especially considering that significant expansion of oil tanker traffic in northern British Columbia would represent a much greater risk of catastrophic loss of SRKW (and NRKW) than fisheries. This suggestion is not meant to divert attention away from fisheries, but rather to recognize that modeled fishery impacts on SRKW extinction risk are probably not robust to other PVA assumptions.

## 6.0 REFERENCES

- Ayres, K.L., Booth, R.K., Hempelmann, J.A., Koski, K.L., Emmons, C.K., Baird, R.W., Balcomb-Bartok, K., Hanson, M.B., Ford, M.J., and Wasser, S.K. 2012. Distinguishing the impacts of inadequate prey and vessel traffic on an endangered Killer whale (*Orcinus orca*) population. *PLoS ONE* **7(6)**: e368.
- Barre, L.M. 2011. Southern Resident Killer Whales Recovery Program. *In* Evaluating the Effects of Salmon Fisheries on Southern Resident Killer Whales: Workshop 1, September 21-23, 2011. NOAA Fisheries and DFO (Fisheries and Oceans Canada), Seattle, WA.
- Barre, L.M. 2012. Performance Criteria for Assessing Impacts. *In* Evaluating the Effects of Salmon Fisheries on Southern Resident Killer Whales: Workshop 2, March 13-15, 2012. NOAA Fisheries and DFO (Fisheries and Oceans Canada), Vancouver, BC.
- Bigg, M.A. 1982. An assessment of killer whale (*Orcinus orca*) stocks off Vancouver Island, British Columbia. *Report of the International Whaling Commission* **32**: 655–666.
- Bradford, A.L., Weller, D.W., Punt, A.E., Ivashchenko, Y.V., Burdin, A.M., VanBlaricom, G.R., and Brownell, R.L. 2012. Leaner leviathans: body condition variation in a critically endangered whale population. *Journal of Mammology* **93**: 251–266.
- Burkhardt-Holm, P., and Scheurer, K. 2007. Application of the weight-of-evidence approach to assess the decline of brown trout (*Salmo trutta*) in Swiss rivers. *Aquatic Sciences* **69**: 51–70. doi: 10.1007/s00027-006-0841-6.
- Caswell, H. 1988. *Matrix Population Models*. Sinauer, Sunderland, Massachusetts.
- Ciloglu, F., Peker, I., Pehlivan, A., Karacabey, K., Ilhan, N., Saygin, O., and Ozmerdivenli, R. 2005. Exercise intensity and its effects on thyroid hormones. *Neuroendocrinology Letters* **26**: 830–834.
- Durban, J., Fearnbach, H., Balcomb, K.C., and Ellifrit, D. 2012. Size and Body Condition of Southern Residents. *In* Evaluating the Effects of Salmon Fisheries on Southern Resident Killer Whales: Workshop 3, September 18-20, 2012. NOAA Fisheries and DFO (Fisheries and Oceans Canada), Seattle, WA.
- Durban, J., Fearnbach, H., Ellifrit, D., and Balcomb, K.C. 2009. Size and body condition of southern resident killer whales. Contract report to the Northwest Regional Office, National Marine Fisheries Service, Order number AB133F08SE4742, Requisition Number NFFP5000-8-43300.
- Fair, P., Montie, E., Balthis, L., Reif, J., and Bossart, G. 2011. Influences of biological variables and geographic location on circulating concentrations of thyroid hormones in wild bottlenose dolphins (*Tursiops truncatus*). *General and Comparative Endocrinology* **174**: 184–194.

- Fearnbach, H., Durban, J., Ellifrit, D., and Balcomb, K.C. 2011. Size and long-term growth trends of endangered fish-eating killer whales. *Endangered Species Research* **13**: 173–180. doi: 10.3354/esr00330.
- Fisheries and Oceans Canada. 2011. Recovery Strategy for the Northern and Southern Resident Killer Whales (*Orcinus orca*) in Canada. Ottawa, ON.
- Ford, J.K.B. 2012a. Resident killer whale feeding habits: Assessment methods, winter diet, and chum stock ID. *In* Evaluating the Effects of Salmon Fisheries on Southern Resident Killer Whales: Workshop 2, March 13-15, 2012. NOAA Fisheries and DFO (Fisheries and Oceans Canada), Vancouver, BC.
- Ford, J.K.B. 2012b. Assessment of Potential Food Limitation in Resident Killer Whales: How, When and Where. *In* Evaluating the Effects of Salmon Fisheries on Southern Resident Killer Whales: Workshop 2, March 13-15, 2012. NOAA Fisheries and DFO (Fisheries and Oceans Canada), Vancouver, BC.
- Ford, J.K.B., and Ellis, G.M. 2006. Selective foraging by fish-eating killer whales *Orcinus orca* in British Columbia. *Marine Ecology Progress Series* **316**: 185–199.
- Ford, J.K.B., and Ellis, G.M. 2011. Overview of foraging behaviour and diet of Resident killer whales. *In* Evaluating the Effects of Salmon Fisheries on Southern Resident Killer Whales: Workshop 1, September 21-23, 2011. NOAA Fisheries and DFO (Fisheries and Oceans Canada), Seattle, WA.
- Ford, J.K.B., Ellis, G.M., and Balcomb, K.C. 2000. Killer Whales: the Natural History and Geneology of *Orcinus orca* in the waters of British Columbia and Washington. University of British Columbia Press and University of Washington Press, Vancouver, BC and Seattle, WA.
- Ford, J.K.B., Ellis, G.M., Barrett-Lennard, L.G., Morton, A.B., Palm, R.S., and Balcomb, K.C. 1998. Dietary specialization in two sympatric populations of killer whales (*Orcinus orca*) in coastal British Columbia and adjacent waters. *Canadian Journal of Zoology* **76**: 1456–1471.
- Ford, J.K.B., Ellis, G.M., Olesiuk, P.F., and Balcomb, K.C. 2010a. Linking killer whale survival and prey abundance: food limitation in the oceans' apex predator? *Biology Letters* **6**: 139–142. doi: 10.1098/rsbl.2009.0468.
- Ford, J.K.B., Wright, B.M., and Ellis, G.M. 2011. Preliminary estimates of Chinook salmon consumption rates by Resident killer whales. *In* Evaluating the Effects of Salmon Fisheries on Southern Resident Killer Whales: Workshop 1, September 21-23, 2011. NOAA Fisheries and DFO (Fisheries and Oceans Canada), Seattle, WA.
- Ford, J.K.B., Wright, B.M., Ellis, G.M., and Candy, J.R. 2009. Chinook salmon predation by resident killer whales: seasonal and regional selectivity, stock identity of prey, and consumption rates. Fisheries and Oceans Canada (DFO), Nanaimo, BC.
- Ford, J.K.B., Wright, B.M., Ellis, G.M., and Candy, J.R. 2010b. Chinook salmon predation by resident killer whales: seasonal and regional selectivity, stock identity of prey, and consumption rates. *In* DFO Canadian Science Advisory Secretariat Research Document 2009/101.

- Ford, M.J., Ford, J.K.B., Hanson, M.B., Emmons, C.K., Balcomb, K.C., and Weitkamp, L. 2012. Overlap of Southern Resident killer whales and Chinook salmon. *In* Evaluating the Effects of Salmon Fisheries on Southern Resident Killer Whales: Workshop 3, September 18-20, 2012. NOAA Fisheries and DFO (Fisheries and Oceans Canada), Seattle, WA.
- Ford, M.J., and Parsons, K.M. 2012. Estimating the historical size of the southern resident killer whale population. *In* Evaluating the Effects of Salmon Fisheries on Southern Resident Killer Whales: Workshop 2, March 13-15, 2012. NOAA Fisheries and DFO (Fisheries and Oceans Canada), Vancouver, BC.
- Foster, E.A., Franks, D.W., Morrell, L.J., Balcomb, K.C., Parsons, K.M., van Ginneken, A., and Croft, D.P. 2012. Social network correlates of food availability in an endangered population of killer whales, *Orcinus orca*. *Animal Behaviour* **83**: 731–736.
- Goldenberg, D., and Fitzpatrick, N. 2011. The West Coast Salmon Genetic Stock Identification Collaboration Annual Activity Report, 2010. West Coast Salmon Genetic Stock Identification Collaboration.
- Hagen-Breaux, A. 2012. Effects of West-Coast Fisheries on the Abundance of Mature Age Four and Five Chinook in the Salish Sea. *In* Evaluating the Effects of Salmon Fisheries on Southern Resident Killer Whales: Workshop 2, March 13-15, 2012. NOAA Fisheries and DFO (Fisheries and Oceans Canada), Vancouver, BC.
- Hanson, M.B. 2011. Southern Resident Killer Whale diet as determined from prey remains and fecal samples Risk. *In* Evaluating the Effects of Salmon Fisheries on Southern Resident Killer Whales: Workshop 1, September 21-23, 2011. NOAA Fisheries and DFO (Fisheries and Oceans Canada), Seattle, WA.
- Hanson, M.B., Baird, R.W., Ford, J.K.B., Hempelmann, J.A., Van Doornik, D.M., Candy, J.R., Emmons, C.K., Schorr, G.S., Gisborne, B., Ayres, K.L., Wasser, S.K., Balcomb, K.C., Balcomb-Bartok, K., Sneva, J.G., and Ford, M.J. 2010a. Species and stock identification of prey consumed by endangered southern resident killer whales in their summer range. *Endangered Species Research* **11**: 69–82. doi: 10.3354/esr00263.
- Hanson, M.B., and Emmons, C.K. 2011. Spatial and Temporal distribution of Southern Resident killer whales. *In* Evaluating the Effects of Salmon Fisheries on Southern Resident Killer Whales: Workshop 1, September 21-23, 2011. NOAA Fisheries and DFO (Fisheries and Oceans Canada), Seattle, WA.
- Hanson, M.B., Emmons, C.K., Nystuen, J., and Lammers, M. 2012. Using moored passive acoustic recorders to assess seasonal occurrence and movements of Southern Resident Killer Whales in US coastal waters. *In* Evaluating the Effects of Salmon Fisheries on Southern Resident Killer Whales: Workshop 2, March 13-15, 2012. NOAA Fisheries and DFO (Fisheries and Oceans Canada), Vancouver, BC.
- Hanson, M.B., Emmons, C.K., Sears, M., and Ayres, K.L. 2010b. Prey selection by southern resident killer whales in inland waters of Washington during the fall and early winter. National Marine Fisheries Service. Available from <http://www.nwr.noaa.gov/Marine-Mammals/Whales-Dolphins-Porpoise/Killer-Whales/ESA-Status/upload/Hanson-et-al-unpubl-10-2010.pdf>.

- Hanson, M.B., Hempelmann, J.A., and Van Doornik, D.M. 2010c. Species and stock identification of scale/tissue samples from southern resident killer whale predation events collected off the Washington coast during PODs 2009 cruise on the McArthur II. National Marine Fisheries Service. Available from <http://www.nwr.noaa.gov/Marine-Mammals/Whales-Dolphins-Porpoise/Killer-Whales/ESA-Status/upload/Hanson-et-al-unpubl-03-2010.pdf>.
- Hanson, M.B., Ward, E., and Noren, D.P. 2011. Assessing the adequacy of Chinook stocks to meet the energetic needs of Southern resident killer whales in their summer range. *In* Evaluating the Effects of Salmon Fisheries on Southern Resident Killer Whales: Workshop 1, September 21-23, 2011. NOAA Fisheries and DFO (Fisheries and Oceans Canada), Seattle, WA.
- Heisey, D.M., and Patterson, B.R. 2006. A Review of Methods to Estimate Cause-Specific Mortality in Presence of Competing Risks. *Journal of Wildlife Management* **70**: 1544–1555. doi: 10.2193/0022-541X(2006)70[1544:AROMTE]2.0.CO;2.
- Hilborn, R., Cox, S., Gulland, F., Hankin, D.G., Hobbs, T., Schindler, D.E., and Trites, A.W. 2011. Reflections of the Science Panel from Workshop 1 and Guidance for Workshop 2. Prepared with the assistance of ESSA Technologies Ltd., Vancouver, B.C. for National Marine Fisheries Service (Seattle, WA) and Fisheries and Oceans Canada (Vancouver, BC).
- King, J.R., and Murphy, M.E. 1985. Periods of nutritional stress in the annual cycles of endotherms: fact or fiction? *American Zoologist* **25**: 955–964.
- Kope, R. 2012. An Overview of Ocean Fisheries for Chinook Salmon. *In* Evaluating the Effects of Salmon Fisheries on Southern Resident Killer Whales: Workshop 2, March 13-15, 2012. NOAA Fisheries and DFO (Fisheries and Oceans Canada), Vancouver, BC.
- Kope, R., and Parken, C.K. 2011. Recent Trends in Abundance of Chinook salmon stocks from British Columbia, Washington, Oregon, and California. *In* Evaluating the Effects of Salmon Fisheries on Southern Resident Killer Whales: Workshop 1, September 21-23, 2011. NOAA Fisheries and DFO (Fisheries and Oceans Canada), Seattle, WA.
- Krahn, M.M., Ford, M.J., Perrin, W.F., Wade, P.R., Angliss, R.P., Hanson, M.B., Taylor, B.L., Ylitalo, G.M., Dahlheim, M.E., Stein, J.E., and Waples, R.S. 2004. 2004 Status review of southern resident killer whales (*Orcinus orca*) under the Endangered Species Act. NOAA Tech. Memo. NMFS-NWFSC-62. US Department of Commerce, National Marine Fisheries Service, Seattle, WA.
- Krahn, M.M., Hanson, M.B., Baird, R.W., Boyer, R.H., Burrows, D.G., Emmons, C.K., Ford, J.K.B., Jones, L.L., Noren, D.P., Ross, P.S., Schorr, G.S., and Collier, T.K. 2007. Persistent organic pollutants and stable isotopes in biopsy samples (2004/2006) from Southern Resident killer whales. *Marine Pollution Bulletin* **54**: 1903–1911. doi: 10.1016/j.marpolbul.2007.08.015.
- Krahn, M.M., Hanson, M.B., Schorr, G.S., Emmons, C.K., Burrows, D.G., Bolton, J.L., Baird, R.W., and Ylitalo, G.M. 2009. Effects of age, sex and reproductive status on persistent organic pollution concentrations in “Southern Resident” killer whales. *Marine Pollution Bulletin* **58**: 1522–1529. doi: 10.1016/j.marpolbul.2009.05.014.
- Krahn, M.M., Wade, P.R., Kalinowski, S.T., Dahlheim, M.E., Taylor, B.L., Hanson, M.B., Ylitalo, G.M., Angliss, R.P., Stein, J.E., and Waples, R.S. 2002. Status Review of Southern Resident Killer

Whales (*Orcinus orca*) under the Endangered Species Act. US Department of Commerce, National Marine Fisheries Service.

- LaVoy, L. 2011. Chinook abundance and food energy available to Southern Residents - Which fisheries affect prey availability and to what extent? *In* Evaluating the Effects of Salmon Fisheries on Southern Resident Killer Whales: Workshop 1, September 21-23, 2011. NOAA Fisheries and DFO (Fisheries and Oceans Canada), Seattle, WA.
- LaVoy, L. 2012. Comparison of methods for Chinook abundances using CWT Run Reconstruction, PSC Chinook Model, and FRAM. *In* Evaluating the Effects of Salmon Fisheries on Southern Resident Killer Whales: Workshop 2, March 13-15, 2012. NOAA Fisheries and DFO (Fisheries and Oceans Canada), Vancouver, BC.
- Lessard, R.B., Martell, S., Walters, C.J., Essington, T.E., and Kitchell, J.F.K. 2005. Should ecosystem management involve active control of species abundances? *Ecology and Society* **10**: 1. Available from <http://www.ecologyandsociety.org/vol10/iss2/art1/>.
- Long, J. 2011. Southern U.S. Fisheries Affecting Chinook Salmon. *In* Evaluating the Effects of Salmon Fisheries on Southern Resident Killer Whales: Workshop 1, September 21-23, 2011. NOAA Fisheries and DFO (Fisheries and Oceans Canada), Seattle, WA.
- Lusseau, D., Williams, R., Wilson, B., Grellier, K., Barton, T.R., Hammond, P.S., and Thompson, P.M. 2004. Parallel influence of climate on the behaviour of Pacific killer whales and Atlantic bottlenose dolphins. *Ecology Letters* **7**: 1068–1076.
- Matkin, C.O., Saulitis, E.L., Ellis, G.M., Olesiuk, P.F., and Rice, S.D. 2008. Ongoing population-level impacts on killer whales *Orcinus orca* following the “Exxon Valdez” oil spill in Prince William Sound, Alaska. *Marine Ecology Progress Series* **356**: 269–281.
- McCluskey, S.M. 2006. Space use patterns and population trends of southern resident killer whales (*Orcinus orca*) in relation to distribution and abundance of Pacific salmon (*Oncorhynchus spp.*) in the inland marine waters of Washington State and British Columbia. University of Washington.
- Morgan, M.G., and Henrion, M. 1990. Uncertainty: A Guide to Dealing with Uncertainty in Quantitative Risk and Policy Analysis. Cambridge University Press, New York, NY.
- Myers, J. 2011. Frame of Reference: Understanding the distribution of historical Chinook salmon populations. *In* Evaluating the Effects of Salmon Fisheries on Southern Resident Killer Whales: Workshop 1, September 21-23, 2011. NOAA Fisheries and DFO (Fisheries and Oceans Canada), Seattle, WA.
- National Marine Fisheries Service (NMFS). 2008. Recovery Plan for Southern Resident Killer Whales (*Orcinus orca*). National Marine Fisheries Service, Seattle, WA.
- National Marine Fisheries Service (NMFS). 2011a. Endangered Species Act Section 7(a)(2) Biological Opinion and Magnuson-Stevens Fishery Conservation and Management Act Essential Fish Habitat Consultation on NMFS’ Evaluation of the 2010-2014 Puget Sound Chinook Harvest Resource Management Plan under Limit 6 of the 4(d) Rule, Impacts of



- Programs Administered by the Bureau of Indian Affairs that Support Puget Sound Tribal Salmon Fisheries, Salmon Fishing Activities Authorized by the U.S. Fish and Wildlife Service in Puget Sound and NMFS' Issuance of Regulations to Give Effect to In-season Orders of the Fraser River Panel. National Marine Fisheries Service, Northwest Region. May 27. 220 pp.
- National Marine Fisheries Service (NMFS). 2011b. Southern Resident Killer Whales (*Orcinus orca*) - 5 Year Review: Summary and Evaluation. National Marine Fisheries Service, Seattle, WA.
- Nicholas, J., and Hankin, D.G. 1988. Chinook salmon populations in Oregon's coastal river basins: Description of life histories and assessment of recent trends in run strength. Oregon Department of Fish and Wildlife.
- Noren, D.P. 2011a. Estimated field metabolic rates and prey requirements of resident killer whales. *Marine Mammal Science* **27**: 60–67. doi: 10.1111/j.1748-7692.2010.00386.x.
- Noren, D.P. 2011b. Energetic Needs and Prey Consumption Rates of Southern Resident Killer Whales. *In* Evaluating the Effects of Salmon Fisheries on Southern Resident Killer Whales: Workshop 1, September 21-23, 2011. NOAA Fisheries and DFO (Fisheries and Oceans Canada), Seattle, WA.
- Noren, D.P. 2012. Energy requirements and salmon consumption by Southern Resident killer whales in their summer range. *In* Evaluating the Effects of Salmon Fisheries on Southern Resident Killer Whales: Workshop 3, September 18-20, 2012. NOAA Fisheries and DFO (Fisheries and Oceans Canada), Seattle, WA.
- Oki, C., and Atkinson, S. 2004. Diurnal patterns of cortisol and thyroid hormones in the harbor seal (*Phoca vitulina*) during summer and winter seasons. *General and Comparative Endocrinology* **136**: 289–297. doi: 10.1016/j.ygcen.2004.01.007.
- O'Neill, S., Herman, D., Ward, E., Burrows, D.G., and Ylitalo, G.M. 2012a. Integrating stable isotope, genetic, and scale sample data to improve estimates of killer whale diets. *In* Evaluating the Effects of Salmon Fisheries on Southern Resident Killer Whales: Workshop 3, September 18-20, 2012. NOAA Fisheries and DFO (Fisheries and Oceans Canada), Seattle, WA.
- O'Neill, S., Ylitalo, G.M., Herman, D., and West, J. 2012b. Using chemical fingerprints in salmon and whales to infer prey preferences and foraging habitat of SRKWs. *In* Evaluating the Effects of Salmon Fisheries on Southern Resident Killer Whales: Workshop 3, September 18-20, 2012. NOAA Fisheries and DFO (Fisheries and Oceans Canada), Seattle, WA.
- Parken, C.K., Candy, J.R., Ellis, G.M., Ford, J.K.B., and Vélez-Espino, L.A. 2011. Relative Importance of Chinook Salmon Stocks to Resident Killer Whales in Northern Haida Gwaii and the Salish Sea Entrances. *In* Evaluating the Effects of Salmon Fisheries on Southern Resident Killer Whales: Workshop 1, September 21-23, 2011. NOAA Fisheries and DFO (Fisheries and Oceans Canada), Seattle, WA.
- Parsons, K.M., Balcomb III, K.C., Ford, J.K.B., and Durban, J.W. 2009. The social dynamics of southern resident killer whales and conservation implications for this endangered population. *Animal Behaviour* **77**: 963–971.

- Pearson, S., and Jeffries, S. 2012. Pinniped population trends and their diet and distribution overlap with Southern Resident Killer Whales. *In* Evaluating the Effects of Salmon Fisheries on Southern Resident Killer Whales: Workshop 3, September 18-20, 2012. NOAA Fisheries and DFO (Fisheries and Oceans Canada), Seattle, WA.
- Perryman, W.L., Donahue, M.A., Perkins, P.C., and Reilly, S.B. 2002. Grey whale calf production 1994-2000: are observed fluctuations related to changes in seasonal ice cover? *Marine Mammal Science* **18**: 121–144.
- Peterson, C.H., Rice, S.D., Short, J.W., Esler, D., Bodkin, J.L., Ballachey, B.E., and Irons, D.B. 2003. Long-Term Ecosystem Response to the Exxon Valdez Oil Spill. *Science* **302**: 2082–2086. doi: 10.1126/science.1084282.
- Preikshot, D., and Perry, I. 2012. Interactions between marine mammals and chinook salmon in a Strait of Georgia ecosystem model. *In* Evaluating the Effects of Salmon Fisheries on Southern Resident Killer Whales: Workshop 2, March 13-15, 2012. NOAA Fisheries and DFO (Fisheries and Oceans Canada), Vancouver, BC.
- Punt, A.E., and Leslie, R.W. 1995. The effects of future consumption by the Cape fur seal on catches and catch rates of the Cape hakes. 1. Feeding and diet of the Cape hakes *Merluccius capensis* and *M. paradoxus*. *South African Journal of Marine Science* **16**: 37–55. doi: 10.2989/025776195784156539.
- Quinn, T.J., and Deriso, R. 1999. *Quantitative Fish Dynamics*. Oxford University Press, New York, NY.
- Riera, A. 2012. Patterns of seasonal occurrence of sympatric killer whale lineages in waters off Southern Vancouver Island and Washington State, as determined by passive acoustic monitoring. University of Victoria.
- Ross, P.S., Ford, J.K., Hickie, B., MacDonald, R.W., and Jeffries, S.J. 2007. Prolonged risk of persistent organic pollutant (POP)-related health effects in British Columbia's killer whales. *Canadian Technical Report of Fisheries and Aquatic Sciences* **2746**: 94.
- Schultner, J., Kitaysky, A.S., Welcker, J., and Hatch, S. 2012. Fat or lean: adjustment of endogenous energy stores to predictable and unpredictable changes in allostatic load. *Functional Ecology* **DOI: 10.11**.
- Schwacke, L.H., Zolman, E.S., Balmer, B.C., de Guise, S., George, R.C., Hogue, J., Hohn, A.A., Kucklick, J.R., Lamb, S., Levin, M., Litz, J.A., McFee, W.E., Place, N.J., Townsend, F., Wells, R.S., and Rowles, T.K. 2012. Anaemia, hypothyroidism and immune suppression associated with polychlorinated biphenyl exposure in bottlenose dolphins (*Tursiops truncatus*). *Proceedings of the Royal Society B* **279**: 48–57.
- Schwarz, C. 1998. Studies of Uncontrolled Events. *In* Statistical Methods for Adaptive Management Studies. Land Management Handbook No. 42. *Edited by* V. Sit and B. Taylor. BC Ministry of Forests, Research Branch, Victoria, BC. pp. 19–39.

- St. Aubin, D.J., and Geraci, J.R. 1988. Capture and handling stress suppresses circulating levels of thyroxine and triiodothyronine in beluga whales, *Delphinapterus leucas*. *Physiological Zoology* **61**: 170–175.
- St. Aubin, D.J., and Geraci, J.R. 1989. Seasonal variation in thyroid morphology and secretion in the white whale, *Delphinapterus leucas*. *Canadian Journal of Zoology* **67**: 263–267.
- Trites, A.W., and Donnelly, C.P. 2003. The decline of Stellar sea lions *Eumetopias jubatus* in Alaska: a review of the nutritional stress hypothesis. *Mammal Review* **33**: 3–28.
- Trites, A.W., and Joy, R. 2005. Dietary analysis from fecal samples: how many scats are enough? *Journal of Mammology* **86**: 704–712.
- Trzcinski, M.K., Mohn, R., and Bowen, W.D. 2006. Continued decline of an Atlantic cod population: how important is gray seal predation? *Ecological Applications* **16**: 2276–2292.
- Vélez-Espino, L.A., Ford, J.K.B., Ellis, G.M., Parken, C.K., Ward, E., Balcomb, K.C., Cooney, T., Hanson, M.B., LaVoy, L., Noren, D.P., and Sharma, R. 2012. Killer Whale Demography. *In* Evaluating the Effects of Salmon Fisheries on Southern Resident Killer Whales: Workshop 3, September 18–20, 2012. NOAA Fisheries and DFO (Fisheries and Oceans Canada), Seattle, WA.
- Walton, J.C., Weil, Z.C., and Nelson, R.J. 2011. Influence of photoperiod on hormones, behavior, and immune function. *Frontiers in Neuroendocrinology* **32**: 303–319.
- Ward, E. 2012. Quantifying fishing impacts on past and future killer whale growth rates. *In* Evaluating the Effects of Salmon Fisheries on Southern Resident Killer Whales: Workshop 2, March 13–15, 2012. NOAA Fisheries and DFO (Fisheries and Oceans Canada), Vancouver, BC.
- Ward, E., and Barre, L.M. 2012. Summary of lambda & Killer Whale growth rates. *In* Evaluating the Effects of Salmon Fisheries on Southern Resident Killer Whales: Workshop 3, September 18–20, 2012. NOAA Fisheries and DFO (Fisheries and Oceans Canada), Seattle, WA.
- Ward, E., Ford, J.K.B., and Vélez-Espino, L.A. 2012a. Comparison of SRKW and NRKW population dynamics. *In* Evaluating the Effects of Salmon Fisheries on Southern Resident Killer Whales: Workshop 2, March 13–15, 2012. NOAA Fisheries and DFO (Fisheries and Oceans Canada), Vancouver, BC.
- Ward, E., Hanson, M.B., Weitkamp, L., and Ford, M.J. 2010a. Modeling killer whale prey size selection based upon available data. Northwest Fisheries Science Center.
- Ward, E., Holmes, E.E., and Balcomb, K.C. 2009. Quantifying the effects of prey abundance on killer whale reproduction. *Journal of Applied Ecology* **46**: 632–640. doi: 10.1111/j.1365-2664.2009.01647.x.
- Ward, E., Parken, C.K., Kope, R., Clark, J., Vélez-Espino, L.A., LaVoy, L., and Ford, J.K.B. 2012b. Exploring sensitivity of the relationship between salmon abundance indices with killer whale demographics. *In* Evaluating the Effects of Salmon Fisheries on Southern Resident Killer Whales: Workshop 2, March 13–15, 2012. NOAA Fisheries and DFO (Fisheries and Oceans Canada), Vancouver, BC.

- Ward, E., Semmens, B.X., Holmes, E.E., and Balcomb, K.C. 2010b. Effects of Multiple Levels of Social Organization on Survival and Abundance. *Conservation Biology* **25**: 350–355. doi: 10.1111/j.1523-1739.2010.01600.x.
- Warheit, K.I. 2012. Stock-related catch, age, and size distributions from San Juan Islands Chinook Recreational Fishery, Summer 2009. *In* Evaluating the Effects of Salmon Fisheries on Southern Resident Killer Whales: Workshop 3, September 18-20, 2012. NOAA Fisheries and DFO (Fisheries and Oceans Canada), Seattle, WA.
- Weitkamp, L. 2010. Marine Distributions of Chinook salmon from the West Coast of North America Determined by Coded Wire Tag Recoveries. *Transactions of the American Fisheries Society* **139**: 147–170. doi: 10.1577/T08-225.1.
- Van Will, P., and Adicks, K. 2011. Trends in other known SRKW prey species. *In* Evaluating the Effects of Salmon Fisheries on Southern Resident Killer Whales: Workshop 1, September 21-23, 2011. NOAA Fisheries and DFO (Fisheries and Oceans Canada), Seattle, WA.
- Williams, R., Krkosek, M., Ashe, E., Branch, T.A., Clark, S., Hammond, P.S., Hoyt, E., Noren, D.P., Rosen, D., and Winship, A. 2011. Competing conservation objectives for predators and prey: estimating killer whale prey requirements for Chinook salmon. *PLoS ONE* : **6(11)**: e26738. doi:10.1371/journal.pone.0026738.
- Yodzis, P. 2001. Must top predators be culled for the sake of fisheries? *Trends Ecol. Evol. (Amst.)* **16**: 78–84.

## **APPENDIX A: ORIGINAL QUESTIONS FROM THE NOAA AND DFO STEERING COMMITTEE**

Original questions from the NOAA and DFO Steering Committee, as presented in the Reading List document:

### **1. What Do We Know about Their Feeding Habits?**

#### **Review the Available Information on Distribution, Diet, Food Energy Value of Prey, Daily Prey Energy Requirements of Southern Resident Killer Whales**

- 1) Are the methods used to estimate the SRKW diet (including species, Chinook salmon stocks, and Chinook salmon age/size) scientifically reasonable given the available information? Do you have any suggestions to improve the methods?
- 2) Are the methods employed to estimate the daily prey energy requirements of the SRKW scientifically reasonable given the available information? Do you have any suggestions to improve the methods?
- 3) Based on your expert opinion, what level of confidence would you assign to the conclusion that, during the May-Sept time period in the Salish Sea, the SRKW have a diet consisting largely of Chinook salmon?
- 4) Based on your expert opinion, what level of confidence would you assign to the estimate of the distribution of age 3, 4 and 5 Chinook salmon in the SRKW diet (May-Sept, Salish Sea)?
- 5) Based on your expert opinion, what level of confidence would you assign to the conclusion that the SRKW's coastal diet largely consists of salmon? Of Chinook salmon?
- 6) Do you have specific suggestions to address key assumptions and uncertainties?

### **2. What Do We Know About Their Status?**

#### **Review the Available Information on Census and Population Structure, the Species Status and Recovery Criteria, Historical Abundance and Carrying Capacity of Southern Residents as well as Information about Northern Residents**

- 1) What ecosystem considerations and/or trends might be relevant, including environmental carrying capacity questions?
- 2) Based on your expert opinion, what can we learn from evaluating the similarities and differences between Northern and Southern Resident?

### **3. What Do We Know About the Relationship Between Chinook salmon Abundance and Killer Whale Population Dynamics?**

#### **Review the Available Information on Demographic Modeling, the Role of Nutrition in Individual Growth and Condition, and Available and Emerging Methods to Investigate Body Condition**

- 1) Are the methods employed to evaluate the relationship between salmon abundance and SRKW (and/or NRKW) fecundity, survival and population growth scientifically reasonable? Do you have any specific suggestions to improve the methods?

- 2) Based on your expert opinion, are there additional analyses that could be conducted on the SRKW population or other resident killer whale populations to better understand the relationship between salmon abundance and killer whale survival, fecundity, and population growth?
- 3) Are the methods employed to evaluate the potential for nutritional stress in the SRKW population scientifically reasonable?
- 4) Based on your expert opinion, what level of confidence would you assign to the conclusion that the SRKW exhibit signs of nutritional stress? Of cumulative effects that include lower than optimal nutrition?
- 5) Are the methods employed to evaluate the viability of the SRKW under alternative assumptions about future salmon abundance scientifically reasonable? Do you have any specific suggestions to improve the methods?
- 6) Based on your expert opinion, are there additional analyses that could be conducted on the SRKW population or other resident killer whale populations to better understand the relationship between salmon abundance and killer whale population viability?

#### **4. Identify Fisheries That May Affect Prey Availability**

##### **Review the Available Information on Fisheries That May Affect Prey Availability**

- 1) Do any parts of these data need further clarification?

#### **5. Chinook salmon Needs of Southern Resident Killer Whales**

##### **Review the NMFS and DFO's Analyses of the Population's Chinook salmon Needs. Based on this Information**

- 1) Based on your expert opinion, what level of confidence would you assign to the conclusion that the SRKW prey energy requirements are within the range of Chinook salmon kilocalories or numbers of Chinook salmon estimated by NMFS and DFO?
- 2) Do you have specific suggestions to address key assumptions and uncertainties in the analysis?

#### **6. Chinook salmon Abundance and Food Energy Available to Killer Whales**

##### **Review the Analysis Conducted to Date**

- 1) Are the methods employed to predict salmon abundance by stock in specific times/places scientifically valid?
- 2) Are there improvements to the methods you would suggest?

#### **7. Reduction in Chinook salmon Abundance and Food Energy from Fisheries**

##### **Review the Analytical Approach from the Opinion and NMFS Report on Fishery Profiles**

- 1) Are the methods employed to predict the reduction in salmon abundance by stock in specific times/places scientifically valid?
- 2) Are there improvements to the methods you would suggest?

## **8. Ratio of Chinook salmon Food Energy Available Compared to Chinook salmon Food Energy Needed by Southern Residents with (and without) Fishing**

### **Review the Analysis Conducted to Date**

- 1) Are the methods employed to estimate the prey ratios under alternative fishing scenarios scientifically reasonable?
- 2) Do you have specific suggestions to address key assumptions and uncertainties?
- 3) How sensitive is the ratio analysis to its component parts? (e.g., selectivity function, whale population size and structure, percent of Chinook salmon in diet, food energy value of prey, etc.)
- 4) In your expert opinion, do forage ratios provide meaningful information about potential prey limitation in the SRKW?
- 5) How can we improve comparisons to ratios for other marine predators and systems?
- 6) What more can we learn from the ratios? For example, is it possible to estimate what the ratio should be in a given time and area to support survival and recovery of the whales?

## **9. Change in Population Growth Rates Annually, Abundance Over Time and Species Survival and Recovery**

### **Review the Analysis Conducted to Date**

- 1) Based on your expert opinion, what level of confidence would you assign to the conclusion that predicted changes in Chinook salmon abundance caused by fisheries affect the population growth rate of the SRKW?
- 2) Based on your expert opinion, what level of confidence would you assign to the conclusion that predicted changes in Chinook salmon abundance caused by fisheries increases the risk of extinction of the SRKW population?

## APPENDIX B: COMPETING RISKS OF DEATH (CRD) MODELING

### A competing risks of death (CRD) modeling framework for evaluating the impacts of alternative fishing regimes on prey availability and survival.

Throughout the workshop process, the Panel expressed concern about the assumptions underlying analyses of fishery impacts on Chinook salmon availability to killer whales. In particular, the Panel's view is that the original chain of logic linking fisheries to southern resident killer whales (**Figure 1A**) takes too narrow a view of the context in which these interactions take place. The Panel's original concerns arose following Workshop 1, where we questioned assumptions about constant Chinook salmon natural mortality rate and how eliminating Chinook salmon fisheries would cause direct increases in prey available to SRKW. Specific elements of these critiques are as follows:

- 1) **Chinook salmon natural mortality rates seem low** – Instantaneous natural mortality rates of approximately  $0.2 \text{ year}^{-1}$  (~80% survival) and  $0.1 \text{ year}^{-1}$  (~90% survival) for age-4 and age-5 Chinook salmon, respectively, seemed low given the overall magnitude of SRKW consumption of these age-classes (Noren 2011a, 2012) compared to total Chinook salmon abundance in the ocean (Kope 2012).
- 2) **Chinook salmon natural mortality should vary over time** - Temporal variation in Chinook salmon natural mortality would be a reasonable hypothesis given increases in marine mammal predators (especially NRKW and certain pinnipeds) over the past several decades (Ford 2012b, Pearson and Jeffries 2012).
- 3) **Chinook salmon natural mortality should be density-dependent** - Long-lived, highly mobile, and efficient specialist predators like SRKW and NRKW may be able to consume relatively stable quantities of Chinook salmon, which implies that the Chinook salmon natural mortality associated with killer whale predation should vary inversely with Chinook salmon abundance (i.e., at low Chinook salmon abundance, predation mortality should be higher than at high Chinook salmon abundance).
- 4) **Eliminating fisheries should cause an increase in Chinook salmon available to SRKW less than fishery impact** – SRKW are one of many competing consumers of adult Chinook salmon. The impacts of alternative fishing regimes on Chinook salmon available to SRKW does not account for consumption by these other consumers.

The above list contemplates a range of factors and processes that could be involved in Chinook salmon mortality processes. In this Appendix, we provide a brief description and numerical example of a competing risks of death (CRD; Heisey and Patterson 2006) modeling framework, which can help to frame evaluations of fishery-killer whale interactions in an ecosystem context. The CRD approach acknowledges that when multiple consumers act simultaneously as agents of [Chinook salmon] mortality (**Figure 1B**), one may not be able to predict the impact of adding or removing a source of mortality to overall survival rate without knowing how mortality caused by the remaining agents changes in response to this addition or removal (Heisey and Patterson 2006).



The CRD model we present below is not intended to replace existing multi-species analyses (e.g., Preikshot and Perry 2012) or Chinook salmon abundance reconstruction methods. Rather, it is meant to focus discussion on two types of confounding of fishery and predation effects that arise from the assumptions in (1)-(4) above. First, when there are multiple forces of mortality operating additively and independently on a common prey resource, and the fishing component ( $F_{\text{fishing}} \sim 0.20 \text{ year}^{-1}$ ) is relatively modest compared to other forces, then removing fishing as a cause of death will change prey survival rate less than  $F_{\text{fishing}}$ . Second, if the consumption of prey by natural predators is relatively constant (e.g., follows a Type II functional response), then the natural mortality rate of prey must vary, possibly dramatically, with prey abundance, being much higher when abundance is low.

Examining such interdependencies among multiple forces of mortality can be done using a CRD model that includes SRKW, NRKW, and fisheries as basic elements (although the more complex model in **Figure 1B** could be constructed from available information). The CRD approach takes various forms depending on the field in which it is applied. In fisheries, it takes the form of the so-called catch equation (Quinn and Deriso 1999), i.e.,

$$(1) \quad C_j(t) = N(t) \frac{F_j(t)}{Z(t)} (1 - e^{-Z(t)})$$

where  $j$  indexes prey consumer (e.g., 1=fishery, 2=SRKW, 3=NRKW),  $C_j(t)$  is the total number of Chinook salmon harvested or consumed,  $N(t)$  is the abundance of fully-selected Chinook salmon available to consumers at the beginning of period  $t$ ,  $F_j(t)$  is the force of mortality imposed by consumer  $j$ ,  $M$  is a density-independent natural mortality rate from sources other than fisheries and killer whales, and  $Z(t)$  is the total instantaneous mortality rate, i.e.,

$$(2) \quad Z(t) = M + \sum_{j=1}^J F_j(t)$$

The total annual survival rate is

$$(3) \quad S(t) = e^{-Z(t)}$$

### Assumptions for the Numerical Example

Equation (1) can be solved for the unknown consumption  $C_j$  by each competitor if the individual forces of mortality  $F_j$  are known or predictable from either the product of catchability ( $q_j$ ) and search time ( $E_j$ ) (i.e.,  $F_j = q_j E_j$ ) or from historical estimates of exploitation rates derived from stock reconstruction methods. If, on the other hand, the  $F_j$  are unknown, then Equation (1) can be solved numerically for the  $F_j$  values given observed values for consumption or catch ( $C_j$ ).

Below we provide a numerical example to demonstrate some basic inferences and insights that might be gained through application of the CRD, or similar, approach to the complex multi-predator/consumer context that provides the setting for these workshops. The example requires a

substantial number of simplifications and assumptions to allow a preliminary assessment of the implications of the CRD approach, and we recognize that some of these simplifications or assumptions may be more or less realistic. The most important simplifications/assumptions are as follows:

**1. Fishery exploitation rates,  $F_j$ ,** for the historical period (1979-2005) were obtained from ocean catches, reconstructions of historical Chinook salmon ocean abundance, and estimated escapements (Kope 2012). It is important to note here that the ocean fishery exploitation rate estimates we used are dependent on assumptions about natural mortality rates at all life history stages via their use in reconstructing ocean abundances.

**2. Chinook salmon consumption per killer whale (C)** matches requirements as inferred from body growth models (Williams et al. 2011, Noren 2012). These consumption rates range from  $C = 2435$  fish/year/whale for a low consumption scenario to  $C = 3997$  fish/year/whale for a high consumption scenario. It is important to highlight here our key assumption that consumption of Chinook salmon per killer whale is fixed regardless of Chinook salmon abundance or the population age-/stage-structure of SRKW and NRKW. Although this is probably not a valid assumption in general, we assume it is a reasonable approximation for a preliminary assessment of the range of Chinook salmon mortality rates generated by killer whales. Fixing consumption this way will tend to over-estimate mortality rates at very low Chinook salmon abundance because there is no reduction in total Chinook salmon consumed by killer whales as perhaps might occur if total feeding time is limiting.

**3. Chinook salmon natural mortality rates** are assumed to be  $M = 0.1/\text{yr}$  or  $M = 0.2/\text{yr}$  from sources other than fisheries or whales (e.g., sea lions, seals). These represent natural mortality rates for age-4 and age-5 Chinook salmon as employed in existing modeling approaches (e.g., CTC, FRAM) and probably result in conservative assessments of mortality in the sense that predation mortality on age-4 and age-5 Chinook salmon by pinnipeds is assumed small compared to predation mortality caused by killer whales.

## Results

Based on the low consumption scenario ( $C = 2345$ ;  $M = 0.1$ ), numerical results from the CRD model suggest that annual survival of ages 4-5 Chinook salmon varied between approximately 55% and 80% over the period 1979-2005. Early peaks of Chinook salmon total mortality in 1979-80 were associated with high fishing mortality, while later peak mortality (1991 and 2004) occurred when low Chinook salmon abundance combined with higher NRKW and SRKW abundances to produce high natural mortality rates (**Figure 2**). Since the early 1990s, it appears that natural mortality may have been substantially higher than assumed in current stock assessments for Chinook salmon.

At the lowest levels of Chinook salmon ocean abundances than have been experienced over the 1979-2005 period (less than 2.5-3.0 million), the CRD model suggests that SRKW and NRKW exert much higher predation mortality, which could lead to annual Chinook salmon survival rates below 40% under low consumption (**Figure 3** top row) and below 30% under high consumption scenarios (**Figure 3** bottom row), even at low fishing mortality.

When Chinook salmon ocean abundance is greater than about 3.5 million, it appears that assumptions about natural survival rates of 80-90% are not unreasonable because mortality rates caused by killer whales would then be relatively low. Mortality due to killer whale predation is much less sensitive to changes in Chinook salmon abundance when that abundance is high.

## Discussion

The CRD model examples are meant to sketch the types of analyses that could be done, for example as checks on the consistency of current assumptions and hypotheses about interactions among marine mammals, fisheries, and Chinook salmon mortality patterns. For the numerical examples above, we made what seemed like sensible assumptions for abundances and consumption rates given presentations at workshops and the available literature (much of which was written by workshop participants!). The results suggest nonlinear interdependencies in how Chinook salmon mortality is partitioned among fisheries, killer whales, and possibly other marine mammals. The CRD approach also suggests that natural mortality rates of Chinook salmon may have increased since the 1970s-1980s due to increasing abundance of northern resident killer whales especially. Thus, **one hypothesis arising from these calculations is that the NRKW population may exert as much, or more, influence over SRKW growth rate as fisheries.** Such relationships could be analyzed in the existing logistic regression framework.

The conceptual model in **Figure 1B** suggests a **second hypothesis that reducing ocean and pre-terminal fisheries may actually result in more transient killer whales (TKW)** via response of intermediate pinniped (PINN) predators to increases in available Chinook salmon.

Fixing the total consumption of Chinook salmon by SRKW and NRKW implies the strong assumption that killer whales impose compensatory mortality on Chinook salmon, as is demonstrated in **Figure 3**. We did not actually model Type II functional response behavior of whales, because that would require more complex analyses that are beyond the scope of our review, although the approach has been applied to other fishery-marine mammal conflicts (Trzcinski et al. 2006). Considering the functional response would likely be important if seasonality were taken into account. In winter, when Chinook salmon are more dispersed compared to peak density periods in summer, SRKW may not be able to consistently obtain a full ration as assumed in the above calculations. Therefore, a more realistic model would be based on input search effort and the functional response rather than assuming constant consumption.

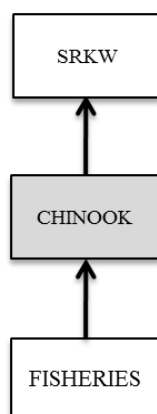
Finally, we wish to acknowledge that estimates of Chinook salmon ocean abundance are based on reconstructions provided by the CTC. The CTC calculations assume that mortality rates between the fish ages are much less than those implied by our CRD calculations. For example, in the run reconstructions, numbers of age-3 fish estimated present in the ocean include an adjustment for ocean natural survival rate. If the true ocean natural survival rates were much less, then the estimated abundances at younger ages would be much more than currently calculated by the CTC. Such effects on age-4 would reflect just one year of "scaling up" to correct for unknown losses due to ocean natural mortality, while effects on age-5 would be small, reflecting only the part of the year (Winter-Summer) leading up to fisheries. Thus, we caution that the CRD calculations probably exaggerate the actual mortality rates, though the relative magnitude of forces of mortality may be

reasonable. On the other hand, we also ignore the dynamics of other Chinook salmon predators such as pinnipeds, which we assume contribute to the constant, relatively low natural mortality rate  $M$ , but which are probably more appropriately dealt with in the same fashion as for killer whale predation. It is likely that multispecies models like Ecosim could also represent the full suite of predation and fishing mortality impacts on Chinook salmon (Preikshot and Perry 2012).

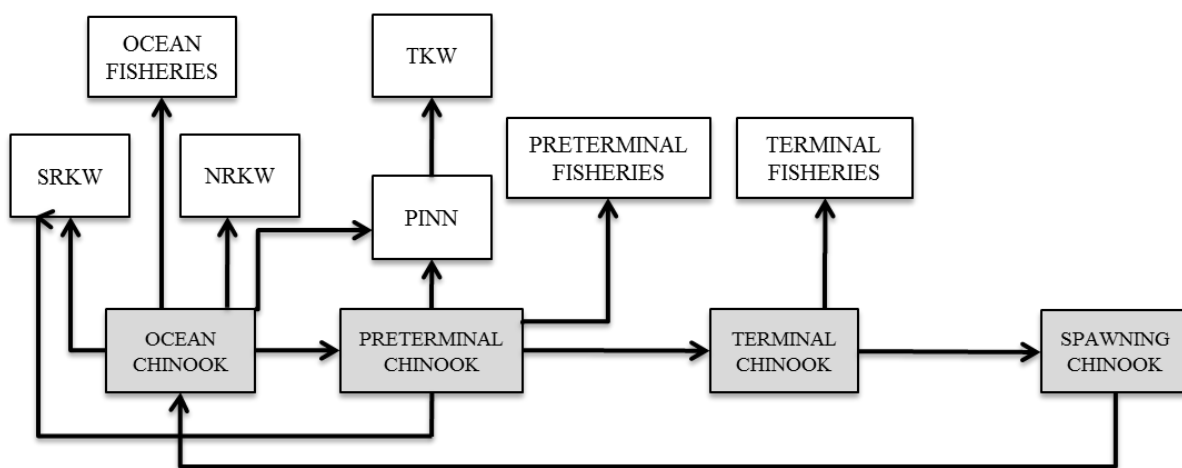
A CRD or similar modeling approach provides a tractable means of assessing alternative "minimum-realistic" models (Punt and Leslie 1995, Yodzis 2001) for predicting how abundance of Chinook salmon and their predators might respond to alternative fishing regimes. The interactions among Chinook salmon, predators, and fisheries is certainly complex enough to warrant looking beyond single-species approaches.

**Figure 1.** Alternative influence diagrams for linking fisheries to Chinook salmon and Southern Resident Killer Whales. (A) Original logic diagram used to define and scope analyses of fishery impacts on SRKW population growth and viability. (B) Alternative influence diagram derived from a competing risks of death (CRD) conceptual model. The CRD is defined by Chinook salmon consumers in ocean (OCEAN), pre-terminal coastal (PRETERMINAL), terminal freshwater areas (TERMINAL), and spawning grounds (SPAWNING). Animal consumers are Southern (SRKW) and Northern (NRKW) Resident Killer Whales and pinnipeds (PINN). Consumers of pinnipeds are transient killer whales (TKW). Consumers of pinnipeds are transient killer whales (TKW).

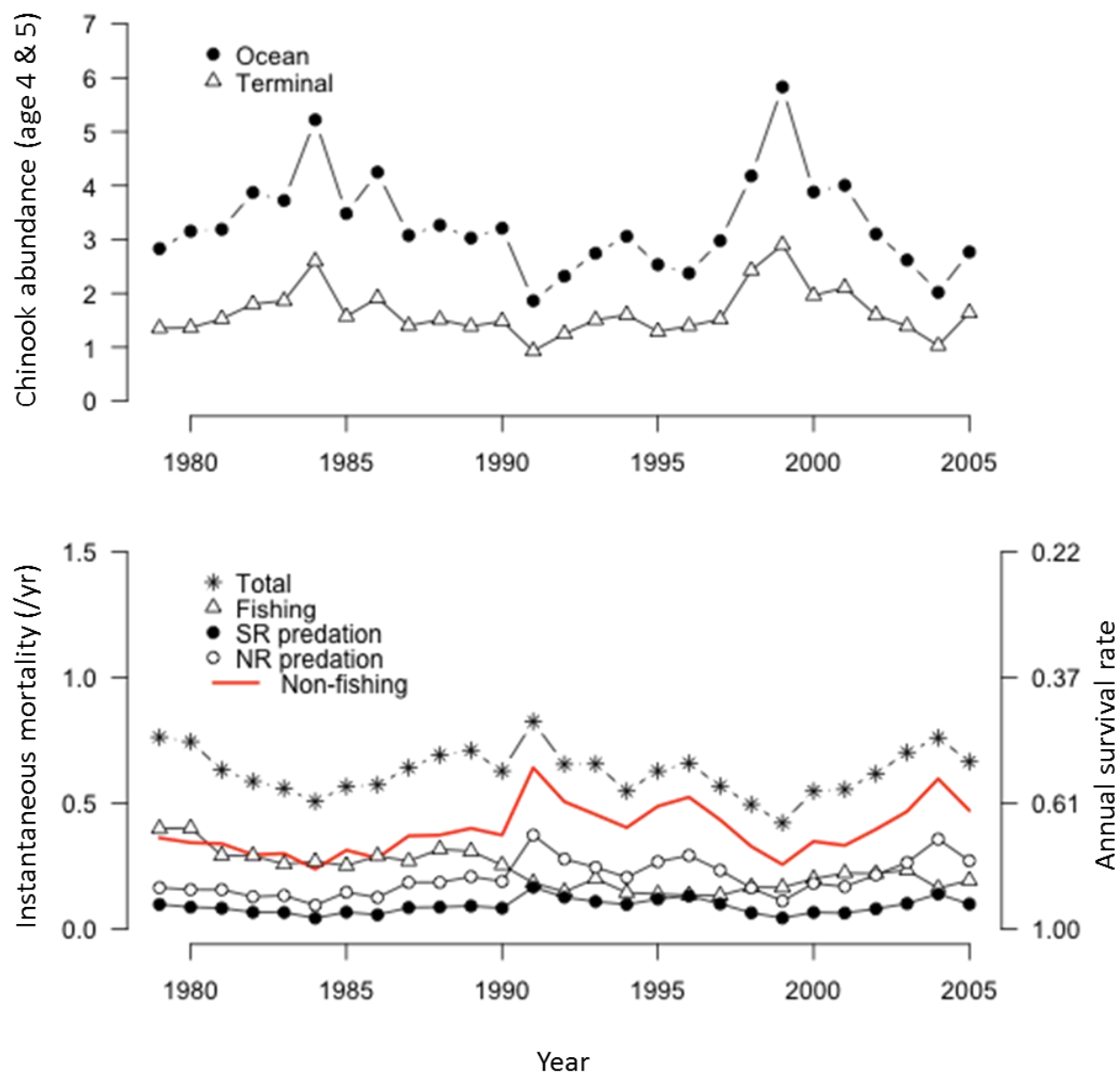
A)



B)



**Figure 2. Top:** Ocean and Terminal Run Chinook salmon abundances obtained from "CTC model-based ERs.xlsx" spreadsheet (calculated as sum of age 4&5 combined Scohort and Terminal Runs). **Bottom:** Instantaneous mortality rates obtained by solving CRD model under assumptions that (i) SRKW and NRKW total annual consumption per whale is constant ( $C=2435$  Chinook salmon in this example); (ii) historic fishing mortality rates are known; and (iii) Chinook salmon prey availability to killer whales is represented by reconstructed Ocean abundance. Total predation + natural mortality is shown as "Non-fishing" (solid red line). The axis on the right side shows the annual survival probabilities corresponding to the instantaneous mortality rates on the left.



**Figure 3.** Relationships between Chinook salmon ocean abundance and the components of instantaneous mortality under four combinations of consumption rates (low and high range reported in Williams et al. 2011) and natural mortality rate from causes other than SRKW and NRKW predation.

