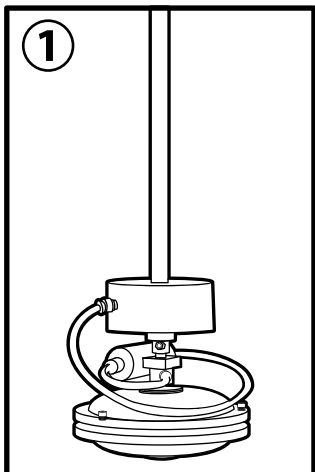
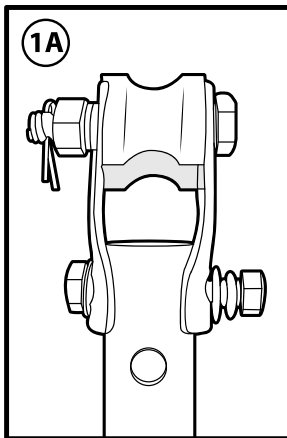


Instructions for Assembly – INDUSTRIE/SOHO

- Unpack the box
- DO NOT MIX the blades with Blades of OTHER fans.
- ALLEN - KEYS are provided in the box for assembly of these Fans.

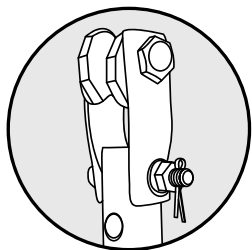


- Take the fan motor and insert the DOWN-ROD in the
- Ceiling clamp assembly.
- Tighten the Bolts as shown in the picture.

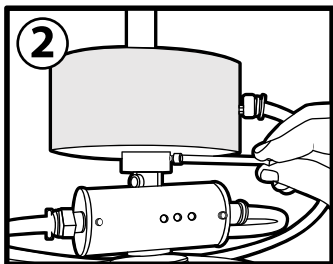


Sequence

1. Washer
 2. Spring washer
 3. Nut
 4. Insert LOCK PIN.
- Tighten Nut Fully

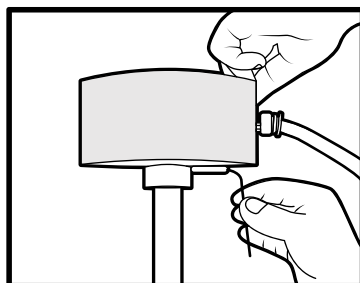


IMPORTANT: Must check LOCK PIN is inserted and SPREAD OPEN with PLIERS. This will ensure that the fan does not Fall in any case of Loosening of Fastners.

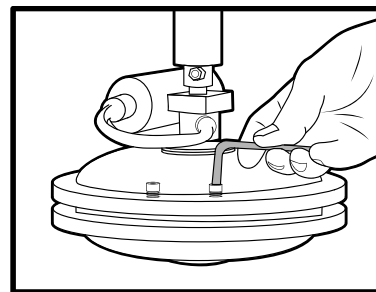


Use ALLEN WRENCH to loosen the Canopy Screw

Move the CANOPY up on the Donward to the desired Height needed.

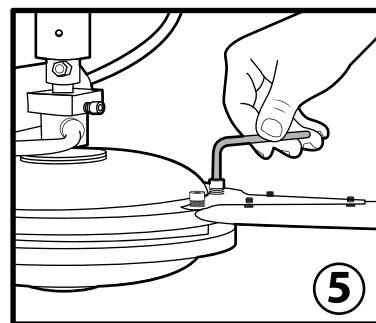


Tighten The Screw with ALLEN Wrench to lock



Loosen the BLADE MOUNTING Screws with provided ALLEN WRENCH

IMPORTANT: DO NOT THROW the RED FIBRE Washer & Spring Washer. BOTH ARE REQUIRED.



Mount the Blade on the Motor Cover Sequence

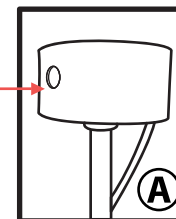
1. Blade Holder
 2. RED Fibre WASher
 3. Spring Washer
 4. Screw
- TIGHTEN FULLY to avoid any ticking Sound.

CAUTION: DO NOT MIX THE BLADES.

FOR FANS with REMOTE CONTROL

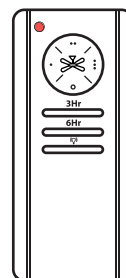
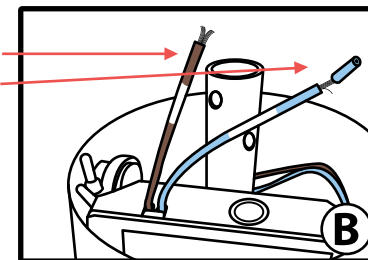
Fans Come pre-installed with Remote Receiver inside the Canopy

A. I.R Sensor (please do not cover/remove)



CONNECT

BROWN Main (Live) to Brown
BLUE Mains (neutral) to Blue
Earth Mains to Yellow/Green



Supplied REMOTE Controller
2 x AAA Batteries required (not supplied)