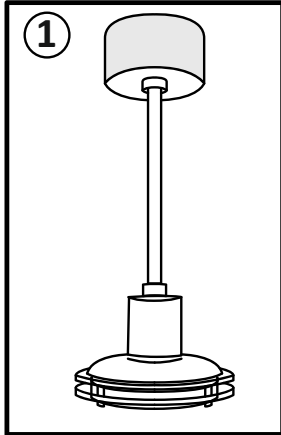
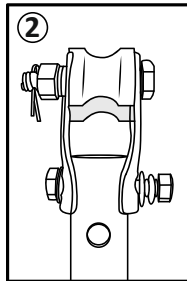


# Instructions for Assembly – PITTS

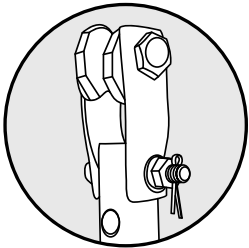
- Unpack the box
- DO NOT MIX the blades with Blades of OTHER fans.
- ALLEN - KEYS are provided in the box for assembly of these Fans.



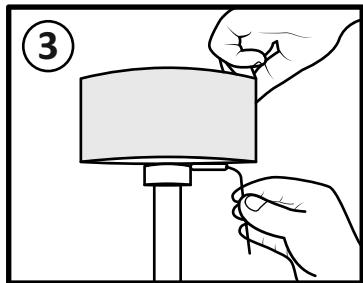
1. - Take the fan motor and insert the DOWN-ROD in the  
- Ceiling clamp assembly.  
- Tighten the Bolts as shown in the picture.



2. Sequence  
1. Washer  
2. Spring washer  
3. Nut  
Tighten Nut Fully  
4. Insert LOCK PIN.

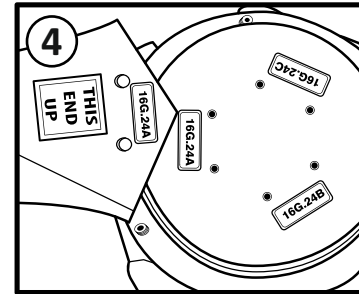


**IMPORTANT** : Must check LOCK PIN is inserted and SPREAD OPEN with PLIERS. This will ensure that the fan does not Fall in any case of Loosening of Fasteners.

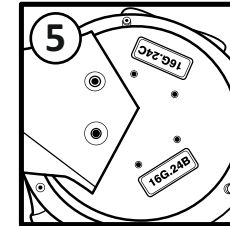


Use ALLEN WRENCH to loosen the Canopy Screw.

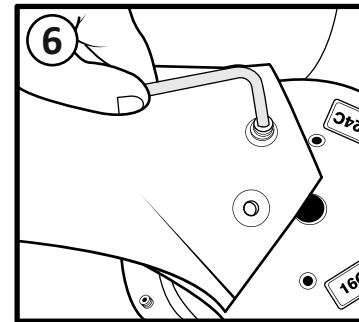
Move the CANOPY up on the Downrod to the desired Height needed.



4. MUST MATCH Blade CODE with Motor CODE.



5. Flip Blade upside-down.



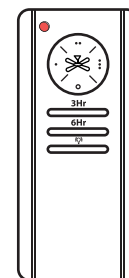
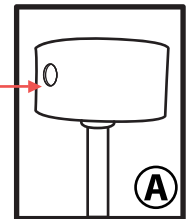
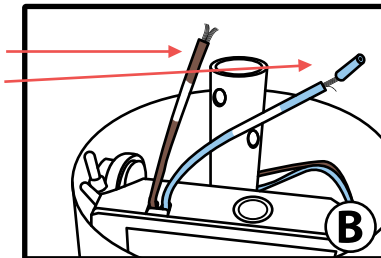
6. Tighten ALLEN BOLTS with Wrenh provided  
Repeat STEP 4 to 6 with remaining 2 Blades.

**CAUTION: DO NOT MIX THE BLADES.**

**FOR FANS with REMOTE CONTROL**  
Fans Come pre-installed with Remote Receiver inside the Canopy

A. I.R Sensor (please do not cover/remove)

**CONNECT**  
BROWN Main (Live) to Brown  
BLUE Mains (neutral) to Blue  
Earth Mains to Yellow/Green



Supplied REMOTE Controller  
2 x AAA Batteries required (not supplied)