

AL8

Passthrough Warewasher

W 905mm x D 760mm x H 1745mm

Washtech warewashers are built to improve the efficiency of operations washing oversized and/or heavily soiled items, from bakeries to production kitchens, supermarkets to hospitals.

The AL8 is a powerful, highly durable, simple-to-use and easy-to-maintain passthrough warewasher. It features Washtech Hybrid Controls which combine IP65 stainless switches, tried-and-tested switchgear, with a customisable electronic timer. Built with a large wash chamber and carefully counterbalanced passthrough door, it is ideal for washing bins, crates, bowls and other oversized items.

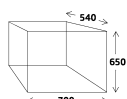
Since 1981 Washtech dishwashers have been constructed from heavy duty stainless steel, and are engineered specifically for the unique local conditions and regulations. Backed by the most extensive service network and spare parts inventory in the region, your Washtech AL8 will not let you down.

Standard Features:

- Versatile 2, 4 and 6 minute wash cycles
- Large internal wash chamber with useable area of W 700mm x D 540mm x H 650mm
- Low hot water consumption of 2.6 litres per cycle
- Washtech Hybrid Controls
- Easy Installation supplied with:
 - Water supply hose
 - Detergent and rinse aid pumps with injector lines
 - No commissioning required
- High powered wash system
- Suitable for connection to low inlet water temperature and/or pressure (break tank and rinse pump fitted)
- Heavy-duty stainless steel construction and wash manifold
- Robust stainless steel wash and rinse arms with precision stainless steel jets
- Double heavy duty stainless steel filtration system including dual scrap trays and separate wash inlet filter
- Wash chamber easily accessible via counter-sprung hood
- Easy loading with inline bench work
- Watermark approved backflow prevention
- Comprehensive Moffat 5-2-1 warranty

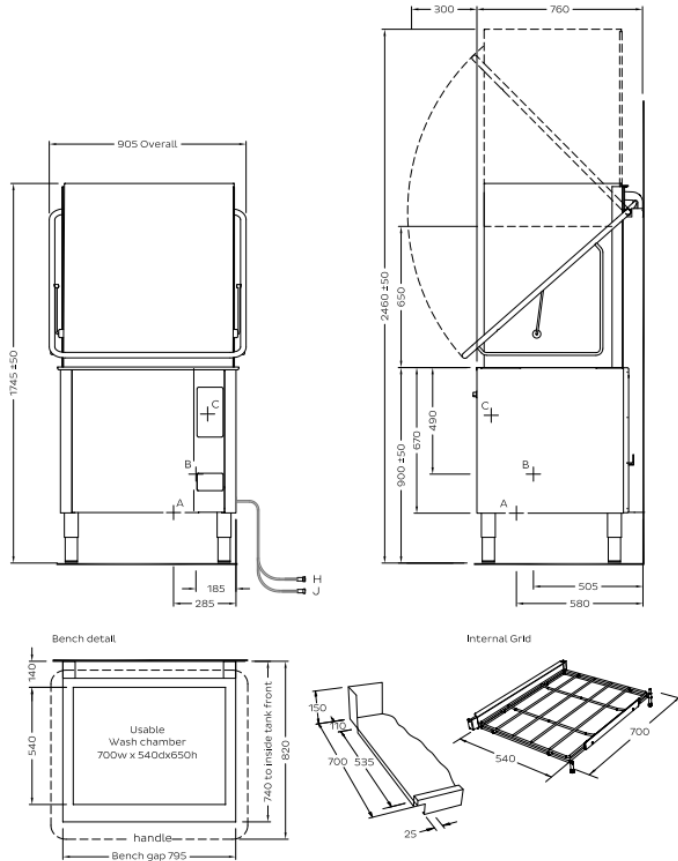
Includes:

- 1x 500mm x 600mm dish rack (600 70042)
- 1x 500mm x 600mm cup rack (600 70043)
- 1x 435mm cup cover (K0452)
- 1x cutlery basket (C660508)
- 1x cutlery container (C660503)



AL8

Passthrough Warewasher
W 905mm x D 760mm x H 1745mm



MOFFAT
moffat.com.au

Australia
Moffat Pty Limited

Victoria/Tasmania
740 Springvale Road
Mulgrave, Victoria 3170
Telephone 03-9518 3888
Facsimile 03-9158 3833
vsales@moffat.com.au

New South Wales
Telephone 02-8833 4111
nswsales@moffat.com.au

South Australia
Telephone 03-9518 3888
vsales@moffat.com.au

Queensland
Telephone 07-3630 8600
qldsales@moffat.com.au

Western Australia
Telephone 08-9202 6820
wasales@moffat.com.au



ISO9001
All Washtech products are designed and manufactured by Washtech using the internationally recognised ISO9001 quality management system, covering design, manufacture and final inspection, ensuring consistent high quality at all times.

In line with policy to continually develop and improve its products, Washtech reserves the right to change specifications and design without notice.



© Copyright Moffat Ltd
Version: 1904

A Hot water	Temperature	65°C			
	Connection	3/4" male; hose supplied			
	Pressure	200-350kPa			
	Flow	10 litres per min			
	Quality	Potable - refer table			
	Backflow Prevention	Atmospheric Vacuum Breaker			
	Consumption	2.6 litres per cycle			
B Waste	Connection	1.5" BSP male			
	Line	2.0" / 50mm minimum			
C Electrical	V	Hz	A/phase	max Kw	
	3P + N + E	415	50	25	18.00
	Option:				
	* 3P + N + E	415	50	15	10.50

Dimensions	Machine	Packed
Width	905	1000
Depth	760	910
Height	1745	1650
Weight	155	180
Cubicmetres		1.50

Water Quality	Min	Max
pH	7	8
Hardness ppm	20	100
CL-		100
SO ₄		400
Fe		0.1
Mn		0.5
Cu		0.05
Cl ₂		0.1

Refer operator manual for installation instructions. Isolating switch must be within 1m of, and not directly behind the machine.

* Connection on lower power rating will reduce the wash and rinse heating, and delay the operation of the machine.

an Ali Group Company



The Spirit of Excellence