



SKU: KP100 EAN Number: 5030282123710

KEY CABINETS

When it comes to keys, you want to make sure they're safe. From a simple key cabinet to a more advanced issue and monitoring system, Securikey can offer a solution to meet your requirements.

SYSTEM 100/PL

- Designed to store padlocks and keys used to isolate switchgear and machinery
- Deep cabinet with staggered hooks allows extra space for padlocks to hang
- Strongly made steel cabinet with flush closing rim to resist forced entry
- Adjustable colour coded and numbered hook bars allow the layout to be customised
- Ingenious key tabs are designed to hang so that the number is always visible
- Includes 7 security seals and loops to secure keys that require clear evidence of tampering or removal
- Lock locations can be recorded on the control index which is removable for added security
- Durable Light Grey paint finish
- Supplied with security lock and 2 keys
- Note: Padlocks not included



ADDITIONAL INFORMATION

Weight	17.000 kg
Dimensions	550 (H) x 730 (W) x 140 (D) mm
Standard	Bronze
EAN	5030282123710
Capacity	100 locks
Locking Options	A – REVO B/BR, B – 3/4 Wheel Mechanical Combination, C – REVO A, D – Padlocking Cam Lock, F – CL1000

PADLOCK SECURITY SYSTEM CABINET FOR 100 LOCKS IMAGES



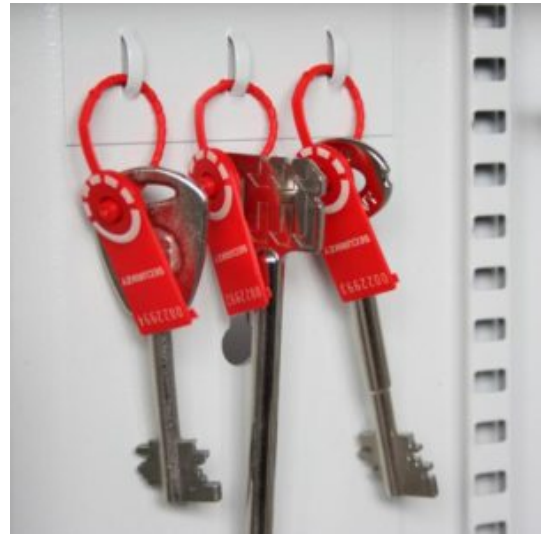
System 100 Padlock



System 100 Padlock Dial Combination Lock



System 100 Padlock CL1000 Electronic Cam Lock



Security Seals & Loops

PADLOCK SECURITY SYSTEM CABINET
FOR 100 LOCKS

SECURIKEY[®]
The key to security

Your Securikey Stockist

Every effort has been made to ensure that the information in this brochure is correct. We have a policy of continually developing and improving our products and reserve the right to change specification without notice. By virtue of the Trades Description Act 1968 all measurements and weights must be considered approximate.



Generated 18/08/2017