

BRONCO TECH



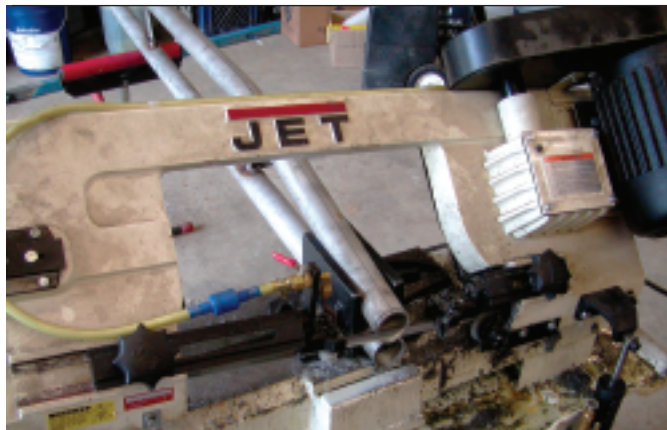
Project Bronco Trail-er Part 3

BY JON BARRICKLOW,
WWW.JBFAB.NET, OREGON

From time to time you find your mind wandering, spawning an idea that makes even people that don't know you question your sanity.

This is the third and final chapter of simple idea gone totally off-track. Now that it was actually starting to look like a trailer, attention was turned to protecting the paint and bodywork that my wife had spent so much time on.

25 Functional stainless steel nerf bars installed at an angle that will help the trailer slide over logs, rock, ect.



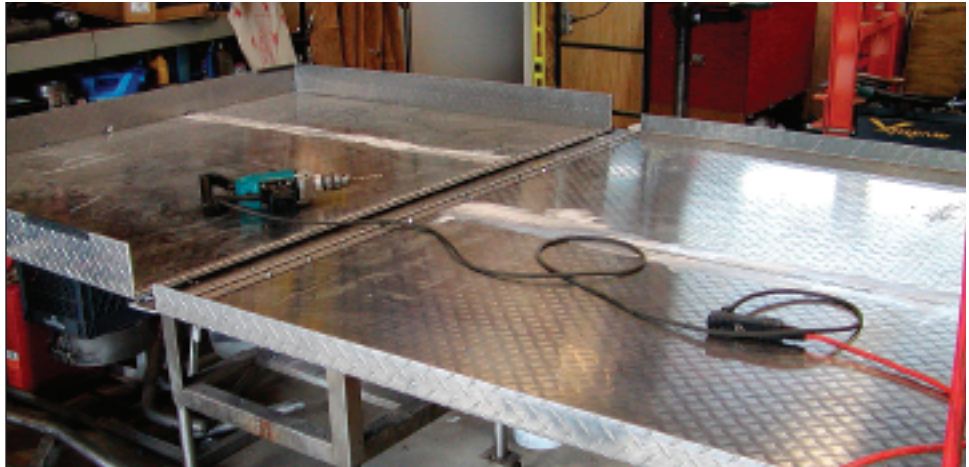
26 A tubular 304 stainless steel rear bumper that had been fabricated to match the tow Bronco were mounted.



27 It was determined early on that this trailer was going to have a tent on top, since a four foot long tent would leave much to be desired a box was built out of 3/16" aluminum diamond plate, using a Readywelder.



28 The box would fold out toward the front of the trailer and be supported by a folding leg that clips to the trailer tongue.



29 make the bottom of the box lay flat when opened two stainless piano hinges were used and attached with counter-sunk 1/4" stainless steel socket head machine screws.

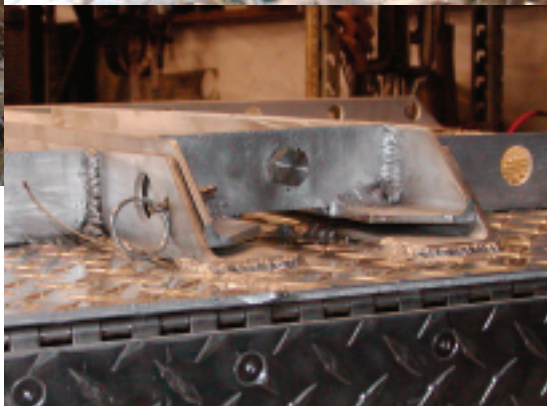


30 A seal was made for the hinged end of the box to keep out the rain sand from 1/8" EPDM gasket material.



31 The bottom and lid of the box were reinforced with 2" X 2" 3/16" aluminum angle ribs to keep the top from flexing and to provide a mounting point for the folding leg that would support the top when open.

The tent was the easy part, it was purchased from a local sporting goods store, after doing a little research to find one that would fit the box.



BRONCO TECH



32 Now it was time to do something with the propane. A stand was fabricated from 1/2" stainless tubing for a lantern with a quick disconnect.



33 A small stainless steel grill was purchased from a local sporting goods store and customized by adding a Bronco emblem.

34 Since the propane system was not going to use a regulator it was important to use the correct high-pressure LPG hose. The hose and the fittings used to connect the appliances were supplied by Suburban Propane of Salem OR, who also made sure the whole thing was safe by crimping the ends on the LPG hoses.



35 Now that the fabrication and assembly were finished the smaller details were addressed such as: pin striping to match to tow Bronco from Classic Car care in Salem OR, a 12 volt outlet inside of the tailgate, panel-mount fuses for the pump and the 12 volt outlet, Stainless steel tailgate handle from Dennis Carpenter, and of course the maiden voyage...SOB 8!



We would like to thank the following people that helped make this project possible:

Hank Tarter, Keizer Collision Center
 Todd Hollis, Industrial Finishes
 Randy Polich, Mid-valley Line-x
 Mike Honan, Classic Car Care
 Jim Kerr, Suburban Propane
 Russ Wimmer, Tom's Bronco Parts
 And of course my wife Rhonda.