

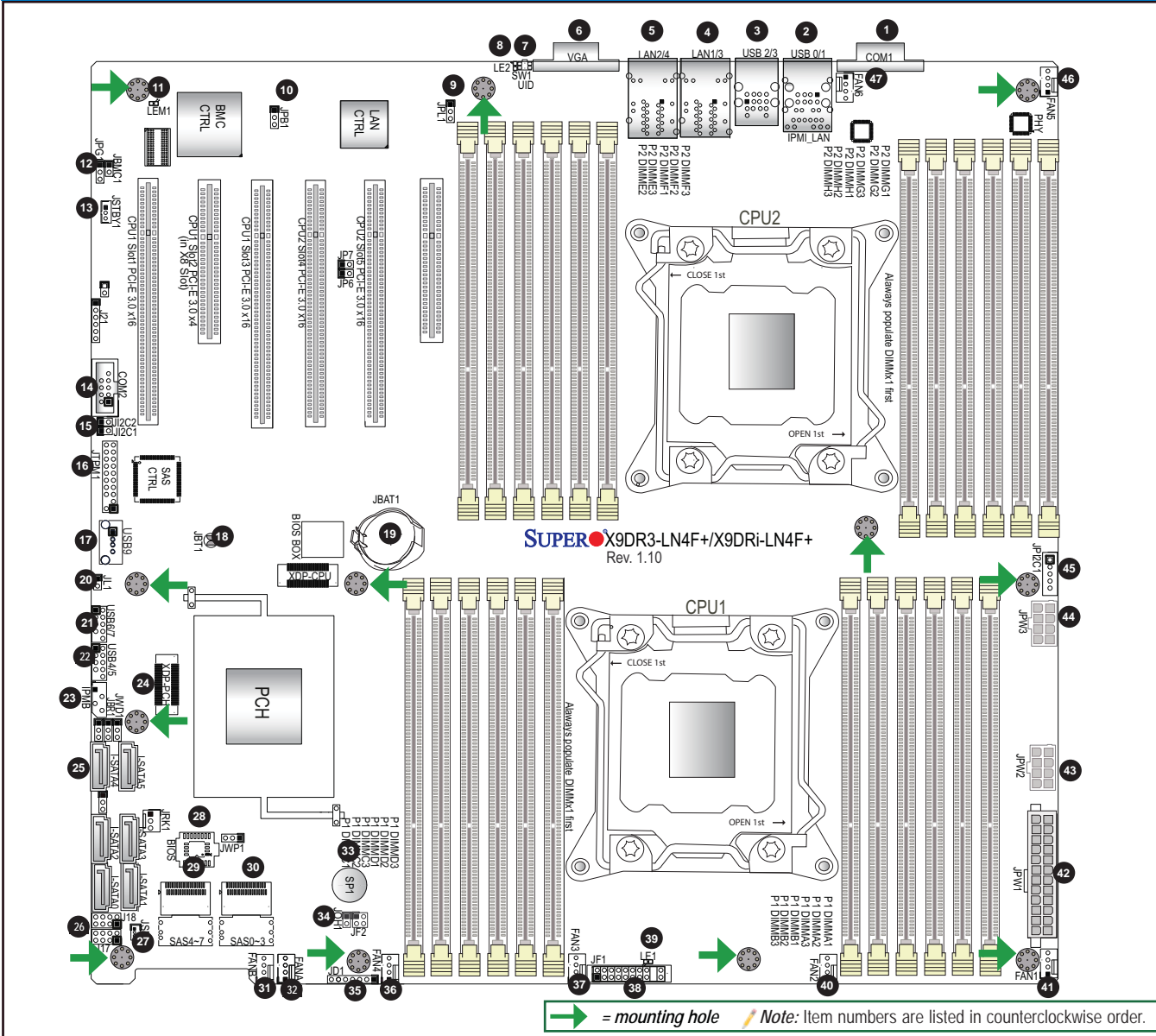
CONTACT INFORMATION

- www.supermicro.com (Email: support@supermicro.com)
- Manuals: http://www.supermicro.com/support/manuals
- Drivers & Utilities: ftp://ftp.supermicro.com
- Safety: http://www.supermicro.com/about/policies/safety_information.cfm

PACKAGE CONTENTS (FOR SINGLE-PACK ONLY)

- One (1) Supermicro Motherboard
- Two (2) SATA Cables
- Two (2) I-Pass to 4 SATA (50-cm) Cables (for X9DR3)
- One (1) I-Pass to 4 SATA (50-cm) Cable (for X9DRi)
- One (1) I/O Shield

Motherboard Layout and Features



Jumpers/Connectors/LED Indicators

Jumpers			
Jumper	Item#	Description	Default
JBT1	18	Clear CMOS	Chpt. 2 in User Manual
JPC1/JPC2	15	SMB to PCI-E Slots	Open (Normal)
JPB1	10	BMC Enabled	Pins 1-2 (Enabled)
JPG1	12	VGA Enabled	Pins 1-2 (Enabled)
JPL1	9	GLAN Enable	Pins 1-2 (Enabled)
JWD1	24	Watch Dog	Pins 1-2 (Reset)

Connectors			
Connector	Item#	Description	
COM1/COM2	1, 14	Backplane COM Port1/Front Accessible COM2 Header	
FAN1-6, FANA, FANB	41, 40, 37, 36, 46, 47, 32, 31	CPU/System Fan Headers	
IPMB	23	4-pin External BMC I ² C Header (for an IPMI Card)	
I-SATA 0-5	25	Intel (PCH) SATA 3.0 Ports 0/1, SATA 2.0 Ports 2-5	
J17/J18	26	Serial-Link General_Purpose IO Headers (T-SGPIO 1/2)	
JBAT1	19	Onboard CMOS Battery	
JD1	35	Speaker/Power LED Indicator	
JF1	38	Front Panel Control Header	
JL1	20	Chassis Intrusion	
JOH1	34	Overheat/Fan Fail LED	
JPC1	45	Power Supply SMBbus I ² C Header	
JPW1	42	ATX 24-Pin Power Connector	
JPW2/JPW3	43, 44	12V 8-Pin Power Connectors	
JSD1	27	SATA DOM (Device_On_Module) Power Connector	
JSTBY1	13	5V Standby Power Header	
JTPM1	16	TPM (Trusted Platform Module)/Port 80	
LAN1/3, LAN2/4	4, 5	G-bit Ethernet Ports 1/3, 2/4	
(IPMI) LAN	2	IPMI_Dedicated LAN	
SATA 0-3	30,	SATA Connectors 0-3 from SCU (X9DRi-LN4F+)	
SATA/SAS0-7	29, 30	SATA/SAS Connectors 0-7 from SCU (X9DR3-LN4F+ only)	
SP1	33	Onboard Buzzer (Internal Speaker)	
USB 0/1	2	Back Panel USB 0/1	
USB 2/3	3	Back Panel USB 2/3	
USB 4/5, USB 6/7	22, 21	Front Panel Accessible USB Connections 4/5, 6/7	
USB 9	17	Front Panel Type A USB 9 Port	
UID Switch	7	UID (Unit Identifier) Switch	
VGA	6	Backpanel VGA Port	

LED Indicators				
LED	Item#	Description	State	Status
LE1	39	Onboard Power LED	Green: On	Power On
LE2	8	UID LED	Blue	Unit Identified
LEM1	11	BMC Heartbeat LED	Green: Blinking	Normal

Memory Support

This motherboard supports up to 768 GB of 240-pin Registered (RDIMM)/Load Reduced (LRDIMM) ECC or 128 GB of Unbuffered (UDIMM) ECC/Non-ECC DDR3 800/1066/1333/1600 MHz 4-channel (per CPU) memory in 24 DIMM slots.

Note: For memory optimization, use only DIMM modules that have been validated by Supermicro. For the latest memory updates, please refer to our website at http://www.supermicro.com/products/motherboard.

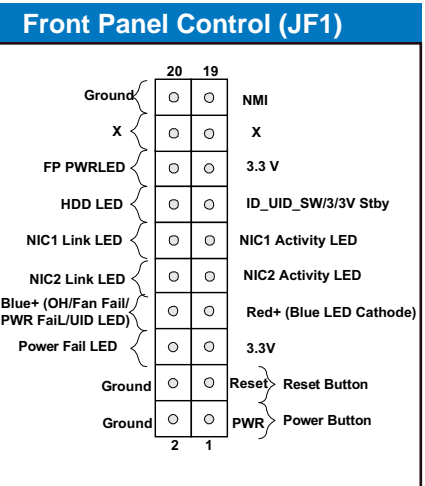
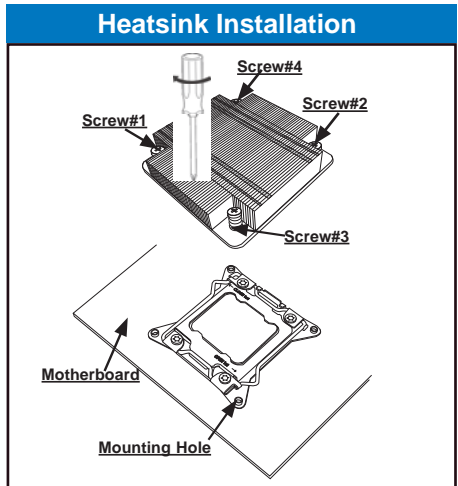
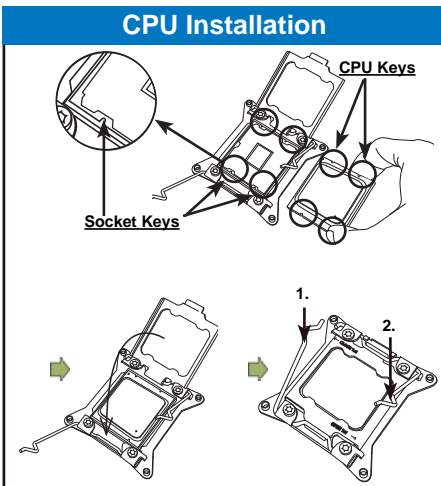
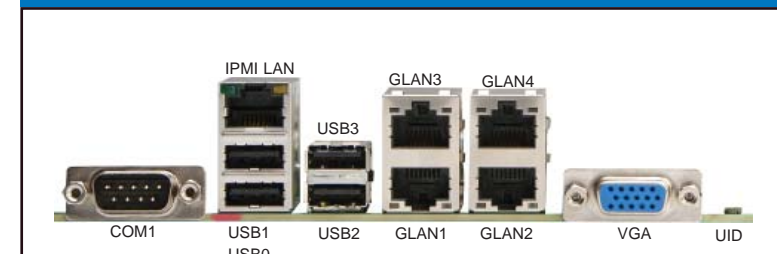
DIMM Installation

Insert the desired number of DIMMs into the memory slots, starting with P1-DIMMA1. For memory to work properly, follow the tables below for memory population order. Refer to the motherboard layout (at left) for the location of the DIMM slots.

Processors and their Corresponding Memory Modules												
CPU#	Corresponding DIMM Modules											
CPU 1	A1	A2	A3	B1	B2	B3	C1	C2	C3	D1	D2	D3
P1-DIMM												
CPU2	E1	E2	E3	F1	F2	F3	G1	G2	G3	H1	H2	H3
P2-DIMM												

Processor and Memory Module Population	
Number of CPUs+DIMMs	CPU and Memory Population Configuration Table (*For memory to work properly, please follow the instructions below.)
1 CPU & 2 DIMMs	CPU1 P1-DIMMA1/P1-DIMMB1
1 CPU & 4 DIMMs	CPU1 P1-DIMMA1/P1-DIMMB1, P1-DIMMC1/P1-DIMMD1
1 CPU & 5-8 DIMMs	CPU1 P1-DIMMA1/P1-DIMMB1, P1-DIMMC1/P1-DIMMD1, P1-DIMMA2/P1-DIMMB2, P1-DIMMC2/P1-DIMMD2
1 CPU & 9-12 DIMMs	CPU1 P1-DIMMA1/P1-DIMMB1, P1-DIMMC1/P1-DIMMD1, P1-DIMMA2/P1-DIMMB2, P1-DIMMC2/P1-DIMMD2, P1-DIMMA3/P1-DIMMB3, P1-DIMMC3/P1-DIMMD3
2 CPUs & 4 DIMMs	CPU1 + CPU2 P1-DIMMA1/P1-DIMMB1, P2-DIMME1/P2-DIMMF1
2 CPUs & 6 DIMMs	CPU1 + CPU2 P1-DIMMA1/P1-DIMMB1, P2-DIMME1/P2-DIMMF1, P1-DIMMC1/P1-DIMMD1
2 CPUs & 8 DIMMs	CPU1 + CPU2 P1-DIMMA1/P1-DIMMB1, P2-DIMME1/P2-DIMMF1, P1-DIMMC1/P1-DIMMD1, P2-DIMMG1/P2-DIMMH1
2 CPUs & 9-12 DIMMs	CPU1/CPU2 P1-DIMMA1/P1-DIMMB1, P2-DIMME1/P2-DIMMF1, P1-DIMMC1/P1-DIMMD1, P2-DIMMG1/P2-DIMMH1, P1-DIMMA2/P1-DIMMB2, P2-DIMME2/P2-DIMMF2
2 CPUs & 13 DIMMs-24 DIMMs	CPU1/CPU2 P1-DIMMA1/P1-DIMMB1, P2-DIMME1/P2-DIMMF1, P1-DIMMC1/P1-DIMMD1, P2-DIMMG1/P2-DIMMH1, P1-DIMMA2/P1-DIMMB2, P2-DIMME2/P2-DIMMF2, P1-DIMMC2/P1-DIMMD2, P2-DIMMG2/P2-DIMMH2, P1-DIMMA3/P1-DIMMB3, P2-DIMME3/P2-DIMMF3, P1-DIMMC3/P1-DIMMD3, P2-DIMMG3/P2-DIMMH3

Back Panel IO Connectors



Note: Graphics shown in this quick guide are for illustration only. Your components may or may not look exactly the same as drawings shown in this guide.

Note: Refer to Chapter 2 of the User Manual for detailed information on jumpers, connectors, and LED indicators.

Note: Refer to Chapter 2 of the User Manual for detailed information on memory support and CPU/motherboard installation instructions.