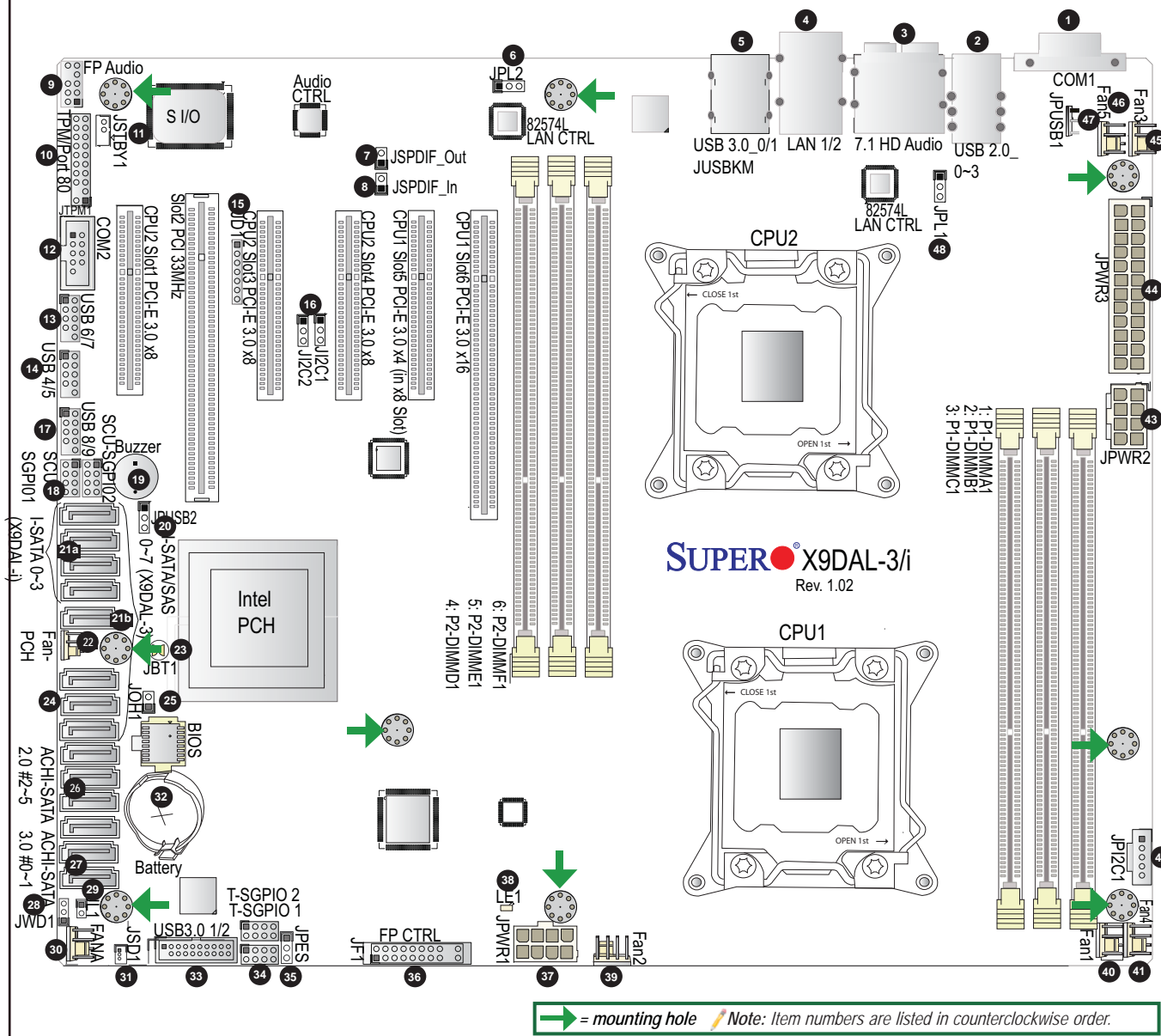


- Eight (8) SATA Cables (X9DAL-3)
- Four (4) SATA Cables (X9DAL-i)
- One (1) I/O Shield

Motherboard Layout and Features



Jumpers/Connectors/LED Indicators

Jumpers			
Jumper	Item#	Description	Default Setting
JBT1	23	Clear CMOS	See Chpt. 2 in User Manual
JPC1/JPC2	16	SMB to PCI-E/PCI Slots	Pins 1-2 (Enabled)
JPES	35	Energy Saving Mode	Pins 1-2 (Enabled)
JPL1/JPL2	48, 6	GLAN1/GLAN2 Enable	Pins 1-2 (Enabled)
JPUSB1	47	Back Panel USB Standby Power Enabled	Pins 1-2 (Enabled)
JPUSB2	20	Front Panel USB Standby Power Enabled	Pins 1-2 (Enabled)
JWD1	28	Watch Dog	Pins 1-2 (Reset)

Connectors			
Connectors	Item#	Description	
7.1 HD Audio	3	8 Channel (7.1) High-Definition Back Panel Audio Connector	
Buzzer	19	Internal Speaker	
COM1/COM2	1, 12	Back Panel COM Port1/Front Accessible COM2 Header	
FP Audio	9	Front Panel Audio Header	
FAN1-5, FANA, FAN-PCH	40, 39, 45, 41, 46, 30, 22	CPU/System Fan Headers, and PCH Fan Header (Fan4: CPU1 Fan, Fan5: CPU 2 Fan)	
(I)ACHI-SATA 0-5	27, 26	(Intel) ACHI-SATA 3.0 Connectors 0/1 (White: from ACHI); ACHI-SATA 2.0 Connectors 2-5 (Black): from ACHI)	
(I)-SATA 0-3	21a	(Intel) PCH-SATA Connectors 0-3 (from SCU)	
(I)-SATA/SAS 0-7	21b	(Intel) PCH-SATA/SAS Connectors 0-7 (from SCU) (for X9DAL-3)	
JD1	15	Speaker/Power LED Indicator	
JF1	36	Front Panel Control Header	
JPPC1	42	Power Supply SMBus I ² C Header	
JL1	29	Chassis Intrusion	
JOH1	25	Overheat LED Header	
JPW1/JPWR2	37, 43	12V 8-Pin Power Connectors	
JPWR3	44	ATX 24-Pin Power Connector	
JSD1	31	SATA DOM (Device On Module) Power Connector	
JSPDIF_In/ JSPDIF_Out	8, 7	SPDIF (Sony/Philips Digital Interface) In/Out Headers	
JSTBY1	11	Standby Header	
LAN1/2	4	G-bit Ethernet Ports 1/2	
SCU-SGPIO & T-SGPIO 1/2	18, 34	Serial Link (SAS) General Purpose IO Headers	
TPM/Port80	10	TPM (Trusted Platform Module)/Port 80	
USB 2.0 0-3	2	Back Panel USB 2.0 Ports 0/1/2/3	
USB 2.0 4-9	14, 13, 17	Front Panel Accessible USB 2.0 Connections 4/5, 6/7, 8/9	
USB 3.0 0/1	5	Back Panel USB 3.0 Ports 0/1	
USB 3.0 2/3	33	Front Panel Accessible USB 3.0 Connections 2/3	

LED Indicators				
LED	Item#	Description	State	Status
LE1	38	Standby PWR LED	Green: On	SB Power On

Memory Support

This motherboard supports up to 192 GB of 240-pin Registered (RDIMM)/Load Reduced (LRDIMM) ECC or up to 48 GB of Unbuffered (UDIMM) ECC/Non-ECC DDR3 800/1066/1333/1600 MHz 3-channel (per CPU) memory in 6 DIMM slots.

Note: For memory optimization, use only DIMM modules that have been validated by Supermicro. For the latest memory updates, please refer to our website at http://www.supermicro.com/products/motherboard.

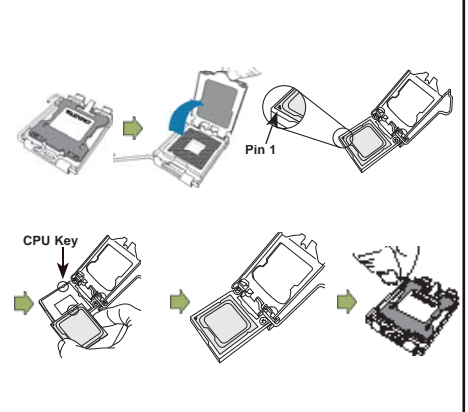
DIMM Installation

Insert the desired number of DIMMs into the memory slots, starting with P1-DIMM1A. For memory to work properly, follow the tables below for memory population order. Refer to the motherboard layout (at left) for the location of the DIMM slots.

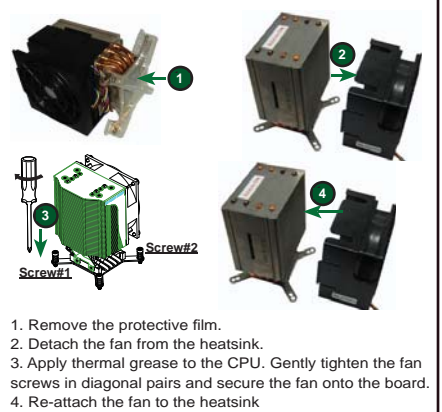
Processors and their Corresponding Memory Modules			
CPU#	Corresponding DIMM Modules		
CPU 1	P1-DIMM1A	P1-DIMM1B	P1-DIMM1C
CPU2	P2-DIMM1D	P2-DIMM1E	P2-DIMM1F

Processor and Memory Module Population	
Number of CPUs+DIMMs	CPU and Memory Population Configuration Table (*For memory to work properly, follow the instructions below.)
1 CPU & 1 DIMMs	CPU1 P1-DIMM1A
1 CPU & 2 DIMMs	CPU1 P1-DIMM1A, P1-DIMM1B
1 CPU & 3 DIMMs	CPU1 P1-DIMM1A, P1-DIMM1B, P1-DIMM1C
2 CPUs & 2 DIMMs	CPU1 + CPU2 P1-DIMM1A, P2-DIMM1D
2 CPUs & 3 DIMMs	CPU1 + CPU2 P1-DIMM1A, P2-DIMM1D, P1-DIMM1B
2 CPUs & 4 DIMMs	CPU1 + CPU2 P1-DIMM1A, P2-DIMM1D, P1-DIMM1B, P2-DIMM1E
2 CPUs & 5 DIMMs	CPU1 + CPU2 P1-DIMM1A, P2-DIMM1D, P1-DIMM1B, P2-DIMM1E, P1-DIMM1C
2 CPUs & 6 DIMMs	CPU1 + CPU2 P1-DIMM1A, P2-DIMM1D, P1-DIMM1B, P2-DIMM1E, P1-DIMM1C, P2-DIMM1F

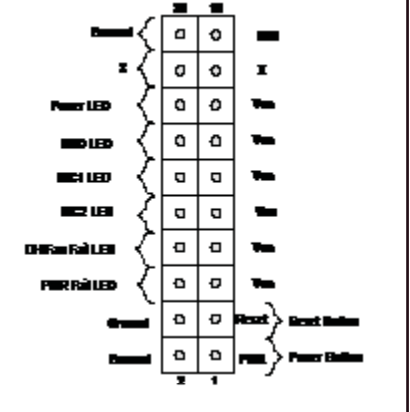
CPU Installation



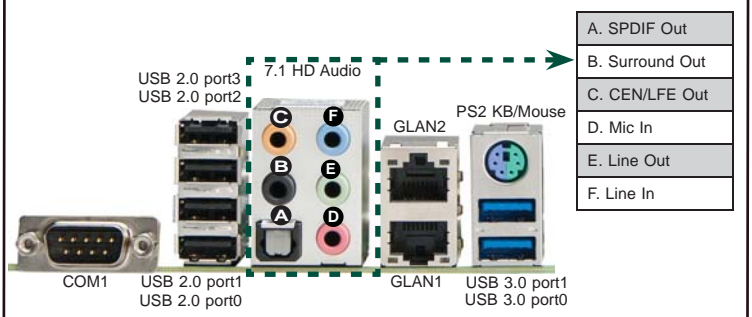
Heatsink Installation



Front Panel Control (JF1)



Back Panel IO Connectors



Note: Graphics shown in this quick guide are for illustration only. Your components may or may not look exactly the same as drawings shown in this guide.

Note: Refer to Chapter 2 of the User Manual on detailed information on jumpers, connectors, and LED indicators.

Note: Refer to Chapter 2 of the User Manual for detailed information on memory support and CPU/motherboard installation instructions.