

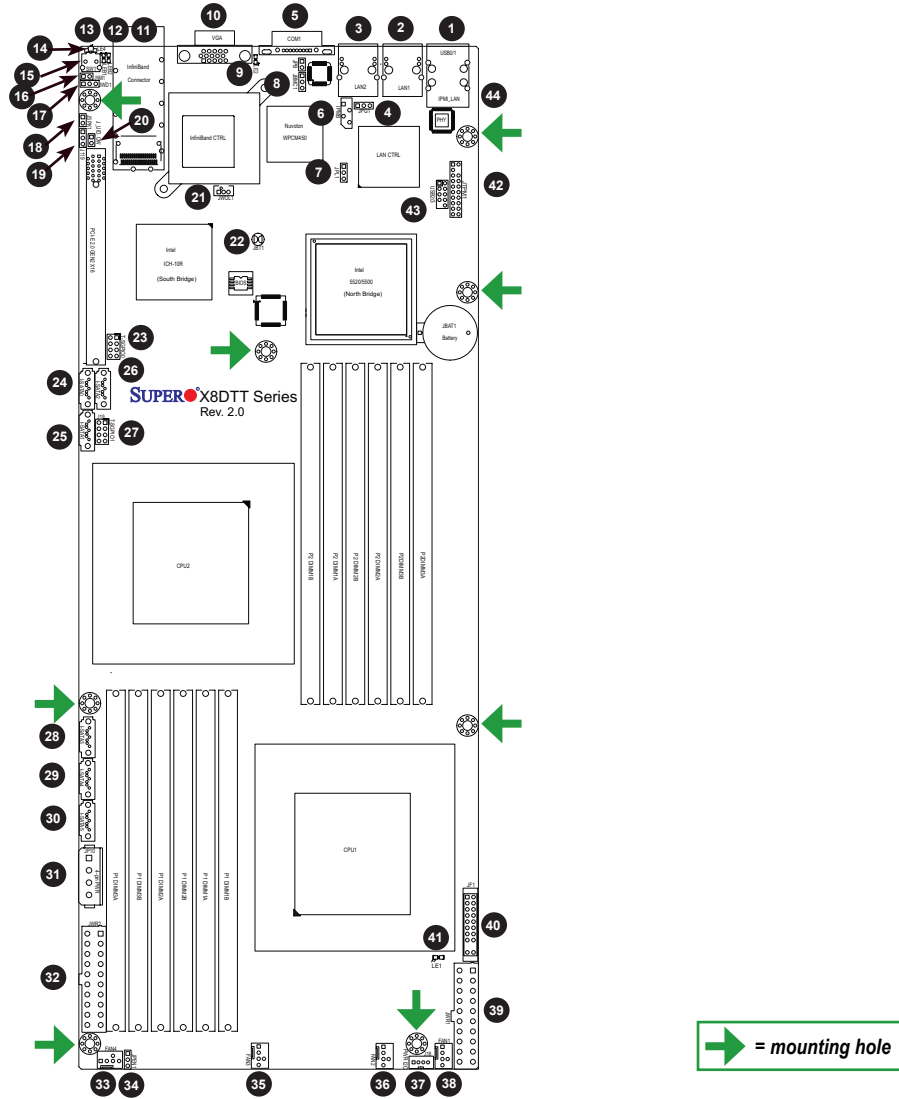
CONTACT INFORMATION

- www.supermicro.com (Email: support@supermicro.com)
- Manuals: http://www.supermicro.com/support/manuals
- Drivers & Utilities: ftp://ftp.supermicro.com
- Safety: http://www.supermicro.com/about/policies/safety_information.cfm

PACKAGE CONTENTS

- One (1) Supermicro Motherboard
- Two (2) SATA Cables

Motherboard Layout and Features



Jumpers, Connectors and LED Indicators

Jumpers

Jumper	Item#	Description	Default Setting
JMBC1	8	BMC Enable (X8DTT-F/-IBXF/-IBQF)	Pins 1-2 (Enabled)
JBT1	22	CMOS Clear	Short: Clear CMOS Open: Normal Operation (Default)
JPEN1	34	Normal Power Enable	Pins 1-2 (Enabled)
JPG1	4	VGA Enabled	Pins 1-2 (Enabled)
JPL1	7	LAN 1/2 Enable	Pins 1-2 (Enabled)
J_UID_OW	20	Red LED OW (Pins 7-8 of JF1)	Off (Overwrites)
JWD1	17	Watch Dog	Pins 1-2 (Reset)

Connectors

Connectors	Item#	Description
COM1	5	COM1 Serial Port
FAN 1-4	38, 36, 35, 33	System/CPU Fan Headers
InfiniBand	11	InfiniBand Connector (X8DTT-IBXF/IBQ/IBQF)
IPMB	6	IPMB Header (for an IPMI Card) (X8DTT-F/-IBXF/-IBQF)
J119	19	InfiniBand I ² C Debug Header (-/IBX/IBXF/IBQF)
JF1	40	Front Panel Connector
JNMI1	16	NMI (Non-Maskable Interrupt) Header
JP10	31	Onboard 4-pin Power Connector
JPSK1	18	Internal Speaker/Buzzer Header
JTPM1	42	Trusted Platform Module Header
JWR1/JWR2	39, 32,	12V 20-pin Power Connector
JWOL1	21	Wake-On-LAN Header
LAN1/2	2, 3	Gigabit Ethernet (RJ45) Ports
(IPMI Dedicated) LAN	44	LAN (RJ45) Port for IPMI 2.0 (X8DTT-F/-IBXF/-IBQF)
SATA0 ~ SATA 5	24, 25, 26, 28, 29, 30	(Intel South Bridge) SATA Ports
SMBus	37	System Management Bus (SMBus) I ² C Header (J18)
SW1	15	Unit Identifier Switch
T-SGPIO-0/T-SGPIO-1	23, 27	Serial General Purpose Input/Output Headers
USB0/1, USB 2/3	1, 43	Universal Serial Bus (USB) Ports 0/1, 2/3
VGA	10	Video Port

LED Indicators

LED	Item#	Description
LE1	41	Onboard Standby PWR warning LED Indicator
LE2	9	BMC Heartbeat LED (Green/Blinking: Normal) (X8DTT-F/-IBXF/-IBQF)
LE4	14	(Rear) Unit Identifier (UID) LED Indicator
LEB1	13	InfiniBand Link LED (X8DTT-F/-IBXF/-IBQF)
LEB2	12	InfiniBand Activity LED (X8DTT-F/-IBXF/-IBQF)

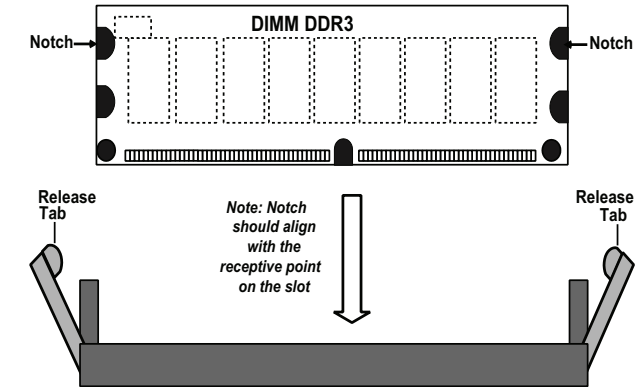
Memory Support

This motherboard supports up to 192 GB of Registered ECC or 48 GB of Unbuffered ECC/Non-ECC DDR3 1333/1066/800 MHz Memory in 12 DIMMs.

Note: Check the Supermicro web site for recommended memory modules.

DIMM Memory Installation

Insert the desired number of DIMMs into the memory slots, starting with P1-DIMM1A.



Memory Population for Optimal Performance
-For a motherboard with One CPU (CPU1) installed

O	Branch 0	Branch 1	Branch 2
3 DIMMs	P1 DIMM1A	P1 DIMM2A	P1 DIMM3A
6 DIMMs	P1 DIMM1A	P1 DIMM1B	P1 DIMM2B

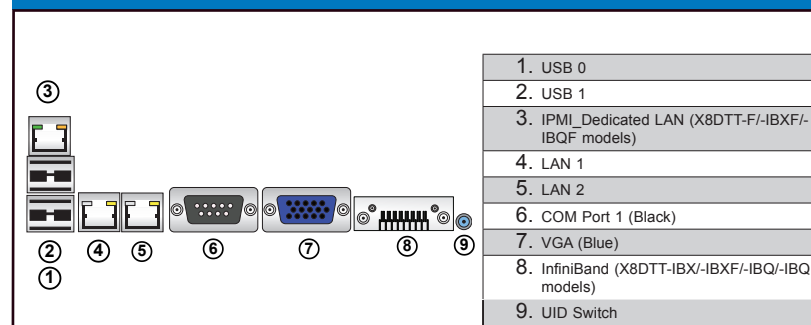
Memory Population for Optimal Performance
-For a motherboard with One CPU (CPU2) installed

	Branch 0	Branch 1	Branch 2
3 DIMMs	P2 DIMM1A	P2 DIMM2A	P2 DIMM3A
6 DIMMs	P2 DIMM1A	P2 DIMM1B	P2 DIMM2B

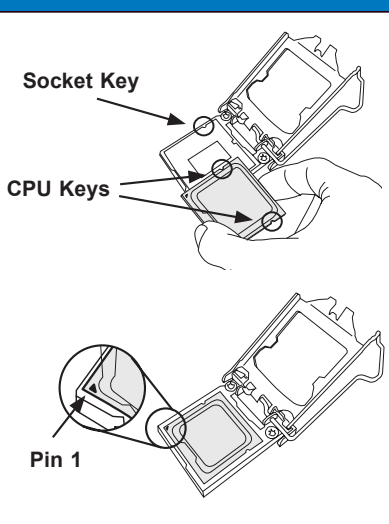
Memory Population for Optimal Performance
-For a motherboard with Two CPUs installed

	CPU1			CPU2		
	Branch 0	Branch 1	Branch 3	Branch 0	Branch 1	Branch 3
6 DIMMs	1A	2A	3A	1A	2A	3A
12 DIMMs	1A	1B	2A	2B	3A	3B

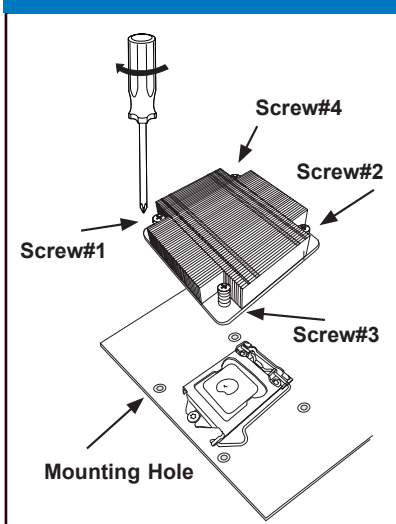
Back Panel I/O Connectors



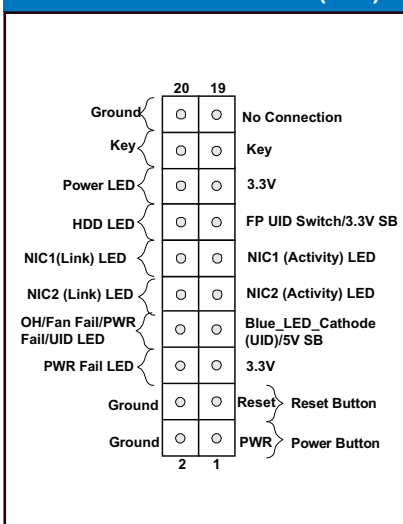
CPU Installation



Heatsink Installation



Front Panel Control (JF1)



Note: Graphics shown in this quick reference guide are for illustration only. Your components may or may not look exactly the same as drawings shown in this guide.

Note: Refer to Chapter 1 of the User Manual for detailed information on jumpers, connectors, and LED indicators.

Note: Refer to Chapter 2 of the User Manual for detailed information on memory support and CPU/motherboard installation instructions.