

CONTACT INFORMATION

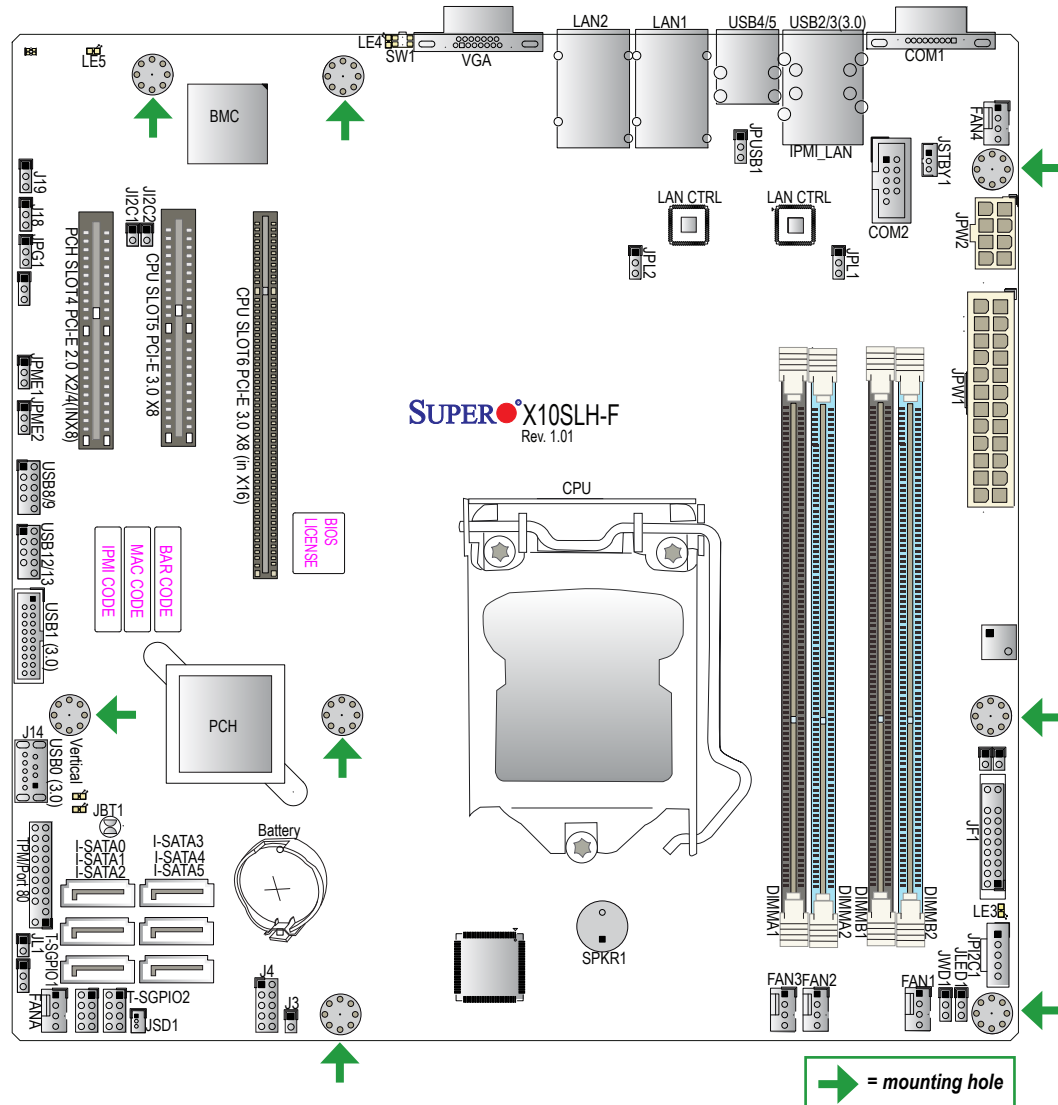
- www.supermicro.com (Email: support@supermicro.com)
- Manuals: http://www.supermicro.com/support/manuals
- Drivers & Utilities: ftp://ftp.supermicro.com
- Safety: http://www.supermicro.com/about/policies/safety_information.cfm

PACKAGE CONTENTS

- One (1) Supermicro Motherboard
- Six (6) SATA Cables
- One (1) I/O Shield



Motherboard Layout and Features



Jumpers, Connectors and LED Indicators

Jumpers		
Jumper	Description	Default
JBT1	CMOS Clear	Short: Clear CMOS Open: Normal Operation (Default)
J12C1/J12C2	SMB to PCI Slots	Off (Disabled)
JPG1	VGA Enable	Pins 1-2 (Enabled)
JPL1/JPL2	LAN1/LAN2 Enable	Pins 1-2 (Enabled)
JPME1	ME Recovery	Pins 1-2 (Normal)
JPME2	Manufacturing Mode	Pins 1-2 (Normal)
JPUSB1	USB4/5 Wake Up Enable	Pins 1-2 (Enabled)
JWD1	Watch Dog Enable	Pins (1-2) (Reset)

Connectors	
Connector	Description
Battery	Onboard Battery
COM1/COM2	COM1: Port, COM2: Header
FAN1-FAN4, FANA	System/CPU Fan Headers
J14	Vertical USB 1 (3.0) Connector
JF1	Front Control Panel Header
JL1	Chassis Intrusion Header
J12C1	Power System Management Bus (Power SMB)
JPW1	24-pin ATX Main Power Connector (Required)
JPW2	+12V 8-pin CPU power Connector (Required)
JSD1	SATA DOM (Device On Module) Power Connector
JSTBY1	Standby Power Header
JTPM1	Trusted Platform Module/Port 80 Connector
LAN1/LAN2	Gigabit (RJ45) Ports
SPKR1	Internal Speaker/Buzzer
I-SATA0-3	(Intel PCH) Serial ATA (SATA 3.0) (6Gb/sec)
I-SATA4/5	(Intel PCH) Serial ATA (SATA 3.0) (6Gb/sec)
(CPU) Slot 6	PCI-Express 3.0 x8 in x16 Slot
(CPU) Slot 5	PCI-Express 3.0 x8 Slot
(PCH) Slot 4	PCI-Express 2.0 x4 in x8 Slot
SW1	Unit Identifier (UID) Switch
T-SGPIO 1/2	Serial Link General Purpose I/O Headers
USB 0	USB 3.0 Port Type A
USB 1	USB 3.0 Header
USB 2/3	Back panel USB 3.0 Ports
USB 4/5	Back panel USB 2.0 Ports
USB 8/9, USB 12/13	Front Panel Accessible USB 2.0 Headers
VGA	Back panel VGA Port

LED Indicators			
LED	Description	Color/State	Status
LE3	Onboard Standby PWR LED	Green: Solid On	Power On
LE4	Unit Identifier (UID) LED	Blue: On	Unit Identified
LE5	BMC Heartbeat LED	Green: Blinking	BMC Normal

Memory Support

The X10SLH-F supports up to 32GB of Unbuffered (UDIMM) DDR3 ECC 1600/1333 MT/s (1.35V/1.5V) memory in four slots.

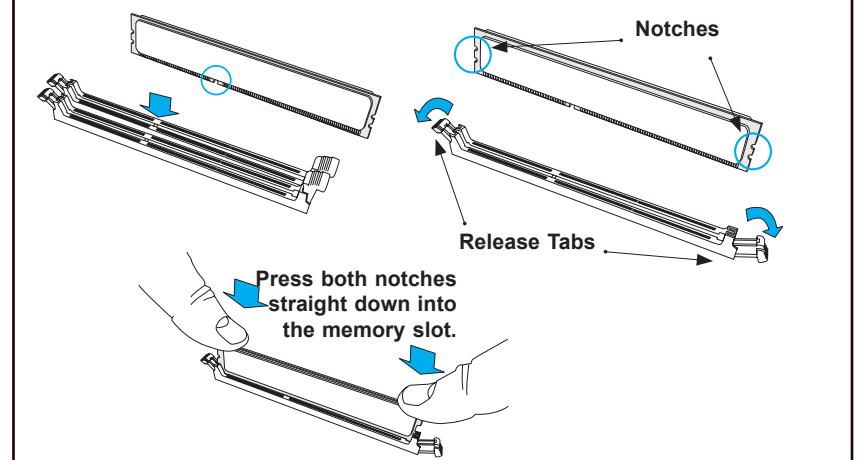
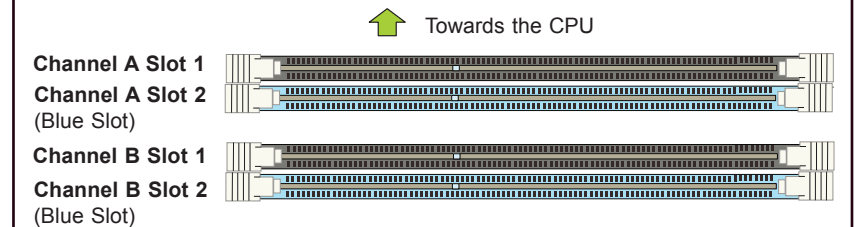
Note: Use memory modules of the same type and speed. Do not mix memory modules.

DIMM Memory Installation

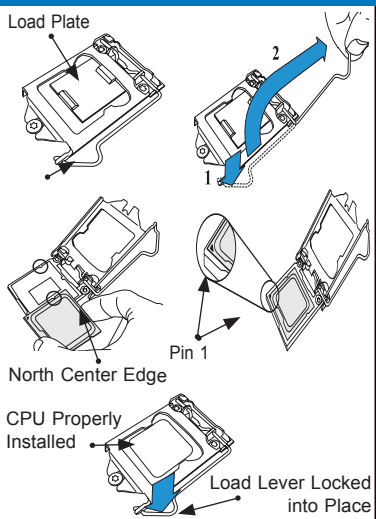
Memory Population Guidelines

Unbuffered (UDIMM) DDR3 ECC Memory				
DIMM Slots per Channel	DIMMs Populated per Channel	DIMM Type	POR Speeds	Ranks per DIMM (any combination)
2	1	Unbuffered DDR3	1333, 1600	Single Rank, Dual Rank
2	2	Unbuffered DDR3	1333, 1600	Single Rank, Dual Rank

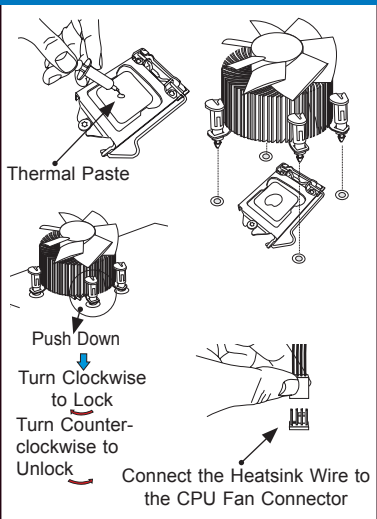
Populating these DIMM modules with a pair of memory modules of the same type and size will result in interleaved memory, which will improve memory performance.



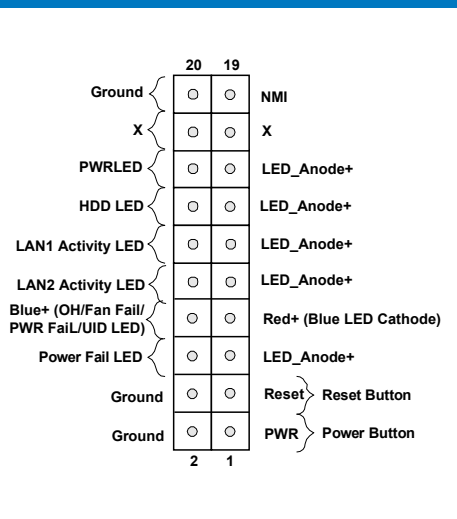
CPU Installation



Heatsink Installation



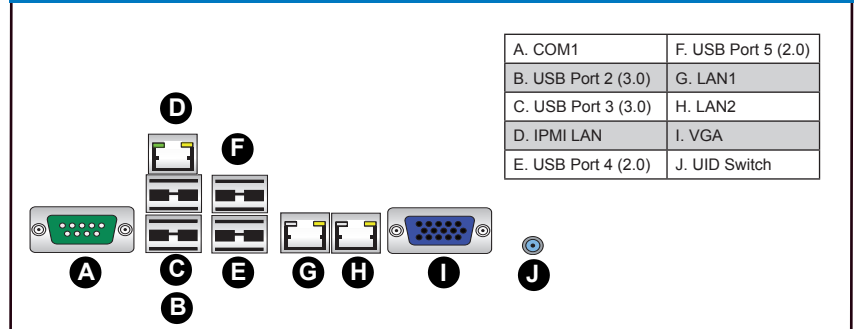
Front Control Panel (JF1)



Note: Graphics shown in this quick reference guide are for illustration only. Your components may or may not look exactly the same as drawings shown in this guide.

Note: Refer to Chapter 1 of the User Manual for detailed information on jumpers, connectors, and LED indicators.

Back Panel I/O Connectors



Note: Refer to Chapter 2 of the User Manual for detailed information on memory support and CPU/motherboard installation instructions.